

CHAPTER IV

SOCIOECONOMIC ASSESSMENT OF THE 2007 OCEAN SALMON FISHERIES

SUMMARY: Total 2007 exvessel value of the Council-managed non-Indian commercial salmon fishery was \$11.6 million. In real (inflation-adjusted) dollars, exvessel value was 24% above its 2006 level (\$9.3 million), but 63% below the recent year high of \$31.7 million (2004), and 79% below the 1979 through 1990 inflation-adjusted average of \$56.6 million (including pinks). The 2007 average West Coast ocean harvest Chinook price was \$5.27 per pound. This was \$0.03 below the 2006 level (\$5.30 per pound), after adjusting for inflation. The 2006 average Chinook price was the highest recorded in more than 25 years in inflation-adjusted terms. At \$1.79 per pound, in inflation-adjusted terms, average 2007 West Coast coho prices were 27% lower than in 2006, 6% lower than in 2005, but 29% higher than the previous five year average (2002-2006). The preliminary number of vessel-based ocean salmon recreational angler trips taken on the West Coast in 2007 was 266,000, an increase of 6% from 2006, and 56% less than the 1979 through 1990 average. The total West Coast income impact associated with recreational and commercial ocean salmon fisheries for all three states combined was estimated at \$38.9 million in 2007. In inflation-adjusted dollars this was 11% above the estimated 2006 level (\$35.0 million), 89% lower than the inflation-adjusted value for 1979 (the highest year in the data time series). Years 2006 and 2007 have the lowest income impacts on record with 1998 as the next comparable year with \$36.9 million.

ALLOCATION OF THE SALMON RESOURCE

Salmon management by the Council involves numerous allocation issues including:

- Determination of the amount of salmon available for ocean harvest after consideration of expected abundances, harvests by inside fisheries, and spawning escapement goals.
- Allocation of harvest among broad management areas and among port areas within the management areas.
- Allocation of harvest between Indian and non-Indian harvesters.
- Allocation of the non-Indian harvest between commercial and recreational harvesters.

The amount of salmon available for harvest in Council management areas depends, in part, on harvest in Canada and Alaska. Allocation of harvest between the West Coast, Canada, and Alaska is determined within the constraints of the PST.

In general, the recreational fishery has tended to have a more stable harvest than the commercial fishery (in both absolute and relative terms) (Figures IV-1 and IV-2). The majority of the annual variation in available ocean harvest is usually taken up in the commercial fishery. However, both fisheries have suffered substantial declines relative to harvest levels of the 1980s, the effects of which are amplified within specific geographic areas.

Decisions on allowable harvests for a particular stock often have implicit allocation effects on the geographic distribution of salmon harvest. Seasons may be more restrictive along a particular area of the coast to protect a depressed stock encountered in that area at a higher rate than other areas. The geographic distribution of harvest opportunity along the coast involves balancing the often conflicting objectives of maximizing ocean harvest and fairly distributing the responsibility for resource conservation. A brief outline of the regulatory objectives which shaped the 2007 season is provided in Chapter I; and an assessment of success in meeting the objectives is provided in Chapters II and III.

COMMERCIAL SALMON FISHERIES

West Coast Non-Indian Commercial Ocean Fishery

Inseason Price Trends

Monthly exvessel price data provide information on seasonal price trends (Table IV-1). The absence of a price breakdown by size category for California salmon landings makes it difficult to tell whether observed price changes were a function of seasonal changes in market conditions or a shift in the size category of fish landed. California and Oregon 2007 prices were at their lowest in July, with fairly consistent high prices for the remainder of the season. Washington prices were highest in May and had a large drop in prices for the remainder of the season with the lowest in July.

Annual Trends (Seasons, Value, Prices, and Pounds)

Available information on Chinook and coho exvessel price and value by species, compiled from state fish receiving tickets and expressed both in nominal terms and inflation-adjusted 2007 dollars, is presented in Tables IV-2, IV-3, and IV-4. Data on pink salmon are provided in Table IV-5. The gross domestic product implicit price deflator, developed by the Bureau of Economic Analysis, was used to adjust nominal values for inflation (Appendix D, Table D-22). Weights of landings by species and port for Chinook and coho are presented in Tables IV-6, IV-7, and IV-8. These tables and the following discussion refer to the non-Indian commercial fishery in Council management areas and associated state territorial ocean area waters.

Total 2007 exvessel value of the Council-area non-Indian commercial salmon fishery was \$11.6 million. In real (inflation-adjusted) dollars, exvessel value was 24% above its 2006 level (\$9.3 million), but 63% below the recent year high of \$31.7 million (2004), and 79% below the 1979 through 1990 inflation-adjusted average of \$56.6 million (including pinks), and 10% below the 1991-2000 inflation-adjusted average of \$13.0 million (including pinks).

The 2007 exvessel value of the California commercial ocean salmon catch (\$7.9 million) was 43% above the 2006 value (\$5.5 million), and 74% below the 1979 through 1990 average (\$29.7 million), in inflation-adjusted dollars. In recent years, a portion of the California harvest was believed to be subject to postseason settlements. Under a postseason settlement, fishers may be paid an additional amount for their fish after the season ends. Value accruing to the fishery from postseason settlements was not reflected on the fish receiving tickets from which estimates of exvessel value were derived. The 2007 exvessel value for the Oregon commercial catch (\$2.8 million) was up slightly 2% from the 2006 value, and 84% below the 1979 through 1990 average (\$17.9 million), in inflation-adjusted terms. The 2007 exvessel value for the Washington non-Indian ocean commercial catch (\$1.0 million) was down 11% from the 2006 value (\$1.1 million). Over the last six years (2002-2007) exvessel values of Washington landings have been the highest since 1993 (\$1.1 million, inflation-adjusted), but were still 88% below the 1979 through 1990 inflation-adjusted average of \$8.0 million.

The 2007 average West Coast ocean harvest Chinook price was \$5.27 per pound, comparable to 2006 (\$5.30 in inflation adjusted dollars). Years 2007 and 2006 have been record high Chinook prices compared to previous years and have not been this high since 1979, which had an average inflation-adjusted price of \$6.39 per pound. One of the main reasons 2007 prices were so high was due to the extremely restricted 2007 fishing season (see Chapter I and Appendix C for details). The 2007 price was \$2.32 above the recent five year (2002-2006) average (\$2.95), in inflation-adjusted terms; however it was \$0.77 greater than the 1979-1990 average (\$4.49). At \$1.79 per pound, in inflation-adjusted terms

average 2007 West Coast coho prices were 27% lower than in 2006, 6% lower than in 2005, and 38% lower than the 1979-1990 average, but 29% higher than the recent five year average (2003-2006).

In terms of number of fish, the 2007 coastwide, non-Indian commercial Chinook harvest (163,000 fish) increased by 34% compared to 2006 (Figure IV-1). Historically, 2006 harvest of fish was the lowest on record. The number of Chinook harvested was 78% below the long-term average, which includes years 1976 through 2006 (751,000 fish). The coastwide average weight per Chinook (13.2 pounds) decreased by 8% compared to 2006 (Appendix D, Tables D-1, D-2, and D-3). Coho catch increased in 2007 to 23,000 fish, about eight and half times the 2,700 coho recorded in 2006 and comparable to 2004, which had 22,100 fish. The coastwide average weight per coho (5.8 pounds) decreased 31% from 2006 (8.5 pounds), which was the highest average weight for 1980 through 2005. The coastwide coho exvessel value was \$0.2 million in 2007, over three times the 2006 inflation adjusted value (Figure IV-4). In 2007 about 48% of the coastwide Chinook harvest (by weight) was taken in California from the San Francisco area south, compared to 44% in 2006 (Table IV-6, IV-7, and IV-8). The KMZ comprised 10% of Chinook harvest (by weight) in 2007, up from 2006, in which the KMZ area was closed and up from 2004, which comprised 5% of Chinook harvest. The harvest in the Fort Bragg port area comprised 16% of the Chinook harvest, comparable to 2006. Compared with 2006, Chinook harvest (by weight) in 2007 was up 45% in California, down 4% in Oregon and down 17% in Washington. The 2007 coho harvest (by weight) was up 239% in Oregon and up 672% in Washington, compared to 2006 (no coho were harvested in California in either year).

Ocean Commercial Salmon Harvesters

Based on Pacific Coast Fisheries Information Network (PacFIN) data, 1,030 vessels participated in the West Coast commercial salmon fishery in 2007, up 16% from the 2006 total of 889, and down 16% from the 2005 total of 1,221. The coastwide vessel counts from PacFIN were lower than the totals derived from summing Appendix D state-level tables because vessels may be counted in more than one state and because of differences in the degree of data completeness at the time the data were summarized.

The active fleet in California increased to 599, in 2007, 122 vessels more than in 2006 but 81 vessels less than 2005. The 599 vessels that landed salmon in 2007 was the third lowest participation on record (data in Table D-4 go back to 1960). In Oregon, the active fleet increased by 79 vessels in 2007 compared to 2006, with 436 vessels and decreased by 129 vessels compared to 2005 (Table D-5). The active fleet in Washington decreased by five vessels to 79 vessels landing salmon in 2007 (Table D-6). Coastwide, the number of limited entry salmon permits issued in 2007 decreased by 127 from the previous year, to 2,552. Landings were made on 44% of all permits in 2007, up from 34% in 2006 and comparable to the 40-50% observed from 2000 through 2005. From 1982 to 1993 an average of 5,193 of 7,942 total permits (65%) were used on an annual basis.

Coastwide in 2007, average per vessel inflation-adjusted exvessel value of salmon landings decreased 3% compared to 2006, to \$10,435 per vessel. Compared to 2006, 2007 average per vessel exvessel revenue was up 14% in California, down 17% in Oregon, and down 6% in Washington. Some caution needs to be exercised in interpreting the per vessel average. For example, the averages may be influenced as much by the entry or exit of a disproportionate number of small or large harvesters from one year to the next as by a change in the average revenues of those vessels remaining in the fishery.

Additional historical information on landings by vessel size, percentages of the fleet responsible for the majority of harvest, and harvest by residence of those participating in the fishery off each state is provided in Appendix D.

West Coast Treaty Indian Commercial Ocean Fishery

Treaty Indian commercial fisheries off Washington operate under regulations established by the Council. While some of the treaty Indian harvest was for ceremonial and subsistence purposes, the vast majority of the catch was commercial harvest. Commercial treaty Indian fisheries provide food to consumers and generate income in local and state economies through expenditures on harvesting, processing, and marketing of the catch. From May through September 4th, the treaty Indian ocean troll fishery harvested 25,600 Chinook (228,900 pounds), 40,000 coho (218,400 pounds) in 2007, compared with 30,700 Chinook (314,000 pounds), 31,700 coho (191,900 pounds) in 2006 (Tables A-15 and D-3). For all of 2007 the preliminary exvessel value of Chinook and coho landed was \$1.1 million and the inflation adjusted exvessel value in 2006 was \$1.2 million (values based on PacFIN data).

Columbia River Commercial Fishery

Harvest in the ocean salmon fisheries affect inriver fisheries by affecting the number of fish available for inside treaty Indian and non-Indian harvest. Table IV-9 shows the exvessel value of Columbia River commercial harvest of Chinook, coho and chum salmon. All prices and values in the table and the following discussion are reported in inflation-adjusted dollars. Exvessel prices for inriver catches of Chinook vary considerably with race (spring versus fall Chinook) and stock (tules versus brights). Spring Chinook generally bring the highest prices and tule fall Chinook and chum the lowest.

Total 2007 exvessel value of commercial salmon harvested in the Columbia River was \$3.8 million. This was 26% below the inflation-adjusted 2006 (\$5.1 million) level. Total 2007 exvessel value for non-Indian commercial salmon harvested in the Columbia River was \$2.0 million, 32% below the 2006 (\$3.0 million) level (Table IV-9).

The total 2007 exvessel value of treaty Indian salmon harvested in the Columbia River and sold on fish tickets was \$1.7 million. This is 18% below the 2006 (\$2.1 million) value. Note that these values include only those sales made to licensed fish buyers. Treaty Indian fisher sales to the public are accounted for in harvest monitoring (Table B-20), but estimates of the pounds and value of such sales were not included in Table IV-9.

Other Inside Commercial Fisheries

Puget Sound and Washington Coastal Inside Fisheries

Information on 2007 Puget Sound and Washington coastal inside fisheries is preliminary. Based on PacFIN data, the 2007 exvessel value reported for all salmon species taken in the commercial non-Indian fisheries in Puget Sound and Washington coastal inside fisheries (excluding the Columbia River) was \$6.3 million. Of this, \$0.8 million was for Chinook and coho. In 2006, the total inflation-adjusted exvessel values for the commercial non-Indian salmon fisheries in these areas were \$7.7 million for all salmon species, and \$1.3 million for Chinook and coho. The 1981 through 2006 inflation adjusted average exvessel value is \$17.8 million with \$4.5 million for Chinook and coho.

The preliminary 2007 exvessel value reported for all salmon species taken in the commercial treaty Indian fisheries in those areas was \$6.1 million. Of this, \$5.2 million was for Chinook and coho. The values for 2006 were \$6.1 million for all salmon species and \$5.2 million for Chinook and coho. The 1981 through 2006 inflation adjusted exvessel value is \$21.9 million with \$8.0 million for Chinook and coho.

Klamath River Fisheries

Commercial sales in the Yurok and Hoopa Valley Reservation Indian fall gillnet fisheries in the Klamath River occurred in 1987-1989, 1996, and 1999-2004. Average commercial catch was 17,600 in those

years, most of which occurred in the estuary. Commercial sales also occurred in spring gillnet fisheries in 1989, 1996, and 2000-2004, with an average of about 1,600 fish sold. The 1989 harvest of 27,700 Chinook was sold for \$852,000 (unadjusted for inflation, \$1.3 million adjusted to 2007 dollars) and had an average per fish weight of 15.4 pounds. For the 1996 harvest of 3,129 spring Chinook and 40,147 fall Chinook, the value at first sale was estimated at \$525,000 (unadjusted for inflation, \$669,000 adjusted to 2007 dollars). The average weight per fish landed in 1996 was 13.5 pounds. Records were not available for the weight and value of harvests after 1996 as each Indian fisher now markets their fish independently. The commercial Chinook harvest was 2,100 fish in 1999, 4,100 in 2000, and more than 10,000 Chinook each year from 2001 through 2004 and in 2007. In 2005 and 2006 there were no commercial sales of either spring or fall Chinook (Appendix B, Table B-5).

CEREMONIAL AND SUBSISTENCE SALMON FISHERIES

In addition to the commercial Indian fisheries discussed above, fish are taken in Indian fisheries each year for ceremonial and subsistence purposes. Estimates of the amount of salmon used for ceremonial and subsistence purposes are documented in Appendix B. Discussion of the importance of ceremonial and subsistence fish to Indian communities is presented in Appendix B to Amendment 14 of the salmon FMP.

RECREATIONAL SALMON FISHERIES

Ocean

The preliminary number of vessel-based ocean salmon recreational angler trips taken on the West Coast in 2007 was 266,000, an increase of 6% from 2006, and 56% less than the 1979 through 1990 average. Compared with 2006, preliminary estimates of the number of trips taken in 2007 decreased by 16% in California, increased by 41% in Oregon, and increased by 12% in Washington. Note that Washington effort estimates in Tables IV-10 and IV-13 differ from those in Tables I-4 and Appendix A Table A-17 because the former exclude bank effort from the Columbia River north jetty.

Recreational salmon fishing takes place primarily in two modes, (1) anglers fishing from privately owned pleasure crafts, and (2) anglers employing the services of the charter boat fleet. In general, success rates on charter vessels tend to be higher than success rates on private vessels. Small amounts of shore-based effort directed toward ocean area salmon occur, primarily from jetties and piers. Coastwide, the proportion of angler trips taken on charter vessels in Washington, Oregon and California declined from 31% in 2006 to 26% in 2007 with a decline occurring in California and Washington and Oregon remaining the same. Figure IV-5 and Tables IV-10, IV-11, IV-12, and IV-13 display details of effort and catch by port area and mode for each state.

California

The preliminary estimate of total 2007 ocean salmon angler effort in California (105,700 angler trips) decreased 16% compared to 2006, (Table IV-11) and was 39% below the most recent five year average (2002 through 2006). Crescent City and Eureka had effort increases of 41% and 23%, respectively. The other California areas had an effort decrease between 9% and 30%. In 2007, the proportion of California trips occurring on charter vessels was 29%, down from 35% in 2006 and the lowest proportion observed in the available time series (back through 1976).

Angler success rates in California, measured in retained salmon per angler day (angler trip), decreased to 0.46 salmon per day in 2007, compared with 0.77 and 0.84 salmon per day in 2006 and 2005, respectively. This is the first time on record that charter anglers had a lower success rate than private anglers. In 2007 anglers on charter vessels landed about 0.09 less salmon per day than anglers fishing from private vessels, compared with 2006, where anglers on charter vessels landed about 0.02 more

salmon per day than anglers from private vessels. With the exception of 2007, since 1976, the differential between charter and private boat angler success rates has ranged from a low of 0.02 in 1991 up to 0.64 salmon per day in 1994.

Oregon

Ocean recreational salmon trips in 2007 in Oregon were up 41% to 88,100 trips from an estimated 62,300 angler trips in 2006. Total 2007 trips were 18% below the most recent five year average (2002 through 2006). All Oregon port areas has an increase in effort ranging from 4% in Brookings to 100% in Newport. The charter industry share of Oregon recreational salmon trips in 2007 was about 13%, which was similar to the previous year as well as the recent five year average (2002 through 2006) (Figure IV-5 and Table IV-12).

From 1984 to 1993, coho comprised 87% of the Oregon recreational ocean salmon catch, on average. From 1994 through 1998 the lack of opportunity to retain coho south of Cape Falcon generally resulted in much lower angler success rates. With the opportunity to retain coho in mark-selective fisheries south of Cape Falcon beginning in 1999, salmon retention rates increased 75% in 1999 to 0.43 salmon per angler day, from 0.25 in 1998. From 2002 through 2006, retention rates ranged between 0.44 and 1.07 salmon per angler day. The retention rate for 2007 was in this range at 0.77.

Washington

In 2007, 72,700 ocean angler trips were taken on vessels on the Washington coast, an increase of 14% from the 63,600 trips taken in 2006, and 24% below the recent five year average (2002-2006). The relatively high level of activity observed in recent years is primarily due to management under mark-selective fishery regulations for coho. The proportion of Washington angler trips taken on charter vessels was 37% in 2007, consistent with 39% in 2006, (Figure IV-5 and Table IV-13), which is comparable to recent years, but 33% below an early year average (1979 through 1990).

Angler success rates (in terms of retained fish per angler trip) increased to 1.28 in 2007, up from 0.73 in 2006 and 0.97 in 2005. The average retention rate between 1979 and 2000 was 1.41 salmon per trip. Note that these figures do not include angler effort that occurs from the ocean side of the Columbia River jetty, or angler effort in the state managed Area 4B add-on fishery (which has not opened since 2000).

In an effort to increase angler participation in non-salmon recreational fishing (e.g. bottomfish trips) and to extend the length of the salmon season, partial-week closures were used in the recreational fishery north of Cape Falcon beginning in 1985. Sunday through Thursday openings were used beginning in 1996 in the Westport and Columbia River port areas. The Neah Bay and La Push areas were generally open seven days a week, until more recently. In 2007, the fishery was open seven-days-week in the Columbia River area (south of Point Leadbeader). All port areas north of Point Leadbetter switched from partial-week openings to a seven-day-a-week fishery on August 16th. In 2007, north of Cape Falcon there were 45,200 bottomfish trips, a decrease from the 49,700 trips in 2006 (Table IV-14). The decline was distributed across all port areas.

Buoy 10 and Area 4B Add-On Fisheries

For anglers fishing from boats, angler retention rates in the Buoy 10 fishery rose from 0.14 salmon per day in 2006 to 0.34 salmon per day in 2007. The 2005 retention rate was 0.30 salmon per day. Effort in 2007 was down 11%, compared with 2006, to about 36,100 trips (boat and jetty) (Table IV-15).

In 2000, about 3,400 trips were made in the late-season Area 4B add-on fishery. Since that time there have been no late season Area 4B add-on fisheries (Table IV-15). An Area 4B add-on fishery was

planned for 2006, scheduled to open upon attainment of the Neah Bay coho quota, however, the quota was not reached and the Area 4B add-on fishery did not occur.

There were numerous other inside recreational salmon fishing opportunities in Puget Sound and coastal streams and estuaries that are not discussed in this chapter of the Review. See Appendix B for estimates of harvest in some of those other fisheries.

SALMON FISHERY INCOME IMPACTS AND COMMUNITY DEPENDENCE

Coastal community income impacts provide information on the effects of fluctuations in salmon harvest on local economies and small businesses. Income impacts are estimated per commercial pound and per recreational fishing day, and were generated using the Fishery Economic Assessment Model (FEAM). Information on FEAM is available from the Council on request.

Estimated state and local community income impacts of commercial and recreational ocean salmon fisheries and selected state-managed fisheries are shown in Tables IV-16 through IV-20. These impacts represent estimates of total personal income associated with harvesting, processing and first level distribution activities in the commercial and recreational salmon fisheries at the local community (county) and state levels. Income impacts are estimated based on several components: reported landings by area, an inventory of area fleet and processors, estimates of fleet and processor expenditures, surveys of the expenditure patterns of recreational fishers, and local and state level total income coefficients generated by IMPLAN[®] models constructed for each area. Commercial ocean harvest not landed in the coastal areas (e.g., landed in Puget Sound ports) was not included in the estimates of coastal community impacts, but was included in the overall estimate of state impacts.

The impacts presented here are estimates of annual trends and are intended to indicate the possible redirection of activity between nonfishing-dependent and fishing-dependent sectors. As such they represent likely upper bounds on the local community and state income impacts generated by West Coast salmon fisheries. All income impact estimates in this review are reported in inflation-adjusted 2006 dollars.

West Coast Ocean Fishery Income Impacts

The total West Coast income impact associated with recreational and commercial ocean salmon fisheries for all three states combined was \$38.9 million in 2007. In inflation-adjusted dollars this was 11% above the estimated 2006 level (\$35.0 million) and 89% lower than the inflation-adjusted value for 1979 (the highest year in the data time series). The 2007 value was 45% below the inflation-adjusted average of \$71.1 million for the previous five years 2002-2006 (Tables IV-16 through IV-18). West Coast income impacts associated with the 2007 non-Indian commercial ocean fishery were \$18.9 million, 26% above 2006 (\$15.0 million) and 54% below 2005 (\$41.2 million), and 54% below the recent five year (2002-2006) average (\$40.8 million), in inflation-adjusted terms;^{1/} the most recent comparable year was 1998 (\$16.4 million). Income impacts related to the 2007 ocean recreational fishery were estimated at \$20.1 million, slightly above the 2006 level (\$20.0 million), down 26% compared with 2005 (\$27.3 million), and 34% below the 2002-2006 average in inflation-adjusted terms (\$30.9 million). These coastwide values do not reveal the reductions in particular communities compared with averages during the 1980s. Tables IV-16 through IV-18 provide greater detail on the impacts in individual states and port areas along the West Coast.

1/ Income impact estimates for the commercial fishery do not include postseason settlement payments fishers may have received from buyers. These postseason settlements may be particularly significant for the California fishery.

Selected Inside Fisheries

Columbia River Commercial Fisheries

For periods in the past, the non-Indian and treaty Indian Columbia River commercial fisheries have generated a substantial amount of income for the Oregon and Washington communities on the Columbia River, an average of \$31.8 million from 1986-1990 (inflation-adjusted). For 2007, income impacts associated with the Columbia River commercial catch (non-Indian and treaty Indian) were estimated at \$6.9 million, compared with \$10.3 million in 2006, \$8.7 million in 2005, and a 1987 through 2006 average of \$11.4 million (all values in inflation-adjusted 2007 dollars, Table IV-19). In FEAM, most of the benefit of higher than average salmon prices was assumed to go to the harvesters.

Buoy 10 and Area 4B Add-On

The estimated local community income impact associated with the 2007 Buoy 10 recreational fishery was \$1.4 million, 8% below the inflation-adjusted 2006 level of \$1.5 million, and 80% below the 1987-1990 inflation-adjusted average of \$6.8 million (Table IV-20). There has not been a late season Area 4B add-on fishery since 2000. An Area 4B add-on fishery was planned for 2006, scheduled to open upon attainment of the Neah Bay coho quota, however, the quota was not reached and the Area 4B add-on fishery did not occur. Between 1996 and 2000, the average annual inflation-adjusted total state-level income impact associated with the Area 4B add-on fishery was \$128,000 (Table IV-20).

TABLE IV-1. Average monthly exvessel troll salmon price in dollars per dressed pound for California, Oregon, and Washington in 2007. (Page 1 of 1)

Species/Grade	Mar.	Apr.	May	June	July	Aug.	Sept.	Oct.	Nov.	Dec.	Season
CALIFORNIA											
Chinook ^{a/}	-	6.67	5.95	6.78	4.15	5.48	5.82	6.39	-	-	5.19
Coho	-	-	-	-	-	-	-	-	-	-	-
OREGON											
Chinook											
Large (>11 Pounds)	-	5.81	6.37	5.32	4.22	5.77	5.42	6.02	6.67	7.51	5.66
Medium (7-11 Pounds)	-	5.59	6.36	5.40	3.86	5.57	5.51	6.05	6.66	-	5.54
Small (<7 Pounds)	-	6.04	5.95	5.21	5.16	5.45	4.93	6.00	-	-	5.49
Ungraded Chinook	-	5.80	6.34	5.41	4.88	5.62	5.87	6.29	7.33	-	5.73
Weighted Average	-	5.79	6.35	5.36	4.50	5.67	5.60	6.07	6.77	7.51	5.66
Mixed Coho	-	-	-	-	2.03	1.85	2.45	-	-	-	1.90
WASHINGTON^{b/}											
Chinook											
Large (>11 Pounds)	-	-	6.17	4.62	3.65	4.53	4.72	-	-	-	4.82
Medium (8-11 Pounds)	-	-	6.24	4.26	3.12	4.10	4.08	-	-	-	4.66
Small (<8 Pounds)	-	-	5.51	3.63	3.14	3.74	4.50	-	-	-	4.36
Ungraded Chinook	-	-	-	-	-	-	-	-	-	-	-
Weighted Average	-	-	6.21	4.50	3.63	4.51	4.82	-	-	-	4.90
Mixed Coho	-	-	-	-	1.27	1.45	1.97	-	-	-	1.46

a/ Chinook salmon typically sold in two size categories. Prices paid in these categories are not extracted from dealer ticket information.

b/ Non-Indian data only.

TABLE IV-2. Troll Chinook and coho landed in California, estimates of exvessel value, and average price (dollars per dressed pound) in nominal and real (2007) dollars.^{a/}

Year or Avg.	Chinook				Coho				Total ^{b/}	
	Nominal Value (\$*1,000)	Real Value (\$*1,000)	Nominal Price Per Pound (\$)	Real Price Per Pound (\$)	Nominal Value (\$*1,000)	Real Value (\$*1,000)	Nominal Price Per Pound (\$)	Real Price Per Pound (\$)	Nominal Value (\$*1,000)	Real Value (\$*1,000)
1979	17,356	41,920	2.53	6.11	2,303	5,562	2.19	5.29	19,659	47,482
1980	12,741	28,214	2.27	5.03	408	903	1.36	3.01	13,149	29,117
1981-1985	10,945	20,505	2.42	4.47	554	1,050	1.94	3.93	11,499	21,555
1986-1990	21,151	33,592	2.56	4.03	490	766	1.36	2.59	21,641	34,358
1991-1995	7,335	9,901	2.28	3.11	143	202	1.25	2.29	7,478	10,103
1996	5,984	7,630	1.44	1.84	-	-	-	-	5,984	7,630
1997	7,288	9,141	1.38	1.73	-	-	-	-	7,288	9,141
1998	3,060	3,796	1.66	2.06	-	-	-	-	3,060	3,796
1999	7,429	9,084	1.93	2.36	-	-	-	-	7,429	9,084
2000	10,304	12,331	2.01	2.41	-	-	-	-	10,304	12,331
2001	4,773	5,578	1.98	2.31	-	-	-	-	4,773	5,578
2002	7,776	8,931	1.55	1.78	-	-	-	-	7,776	8,931
2003	12,181	13,700	1.91	2.15	-	-	-	-	12,181	13,700
2004	17,895	19,564	2.87	3.14	-	-	-	-	17,895	19,564
2005	12,913	13,675	2.97	3.15	-	-	-	-	12,913	13,675
2006	5,350	5,493	5.13	5.27	-	-	-	-	5,350	5,493
2007 ^{c/}	7,850	7,850	5.19	5.19	-	-	-	-	7,850	7,850

a/ These exvessel values do not include the postseason settlement payments some fishers may have received from buyers and therefore may underestimate the true payments received by fishers for their landings. Beginning circa 1999, these postseason settlements are believed to have grown for the California fishery. For 2002, the exvessel value reported here is believed to be under reported by roughly 5% to 10%.

b/ Does not include pink salmon landings, if any.

c/ Preliminary.

TABLE IV-3. Troll Chinook and coho landed in Oregon, estimates of exvessel value, and average price (dollars per dressed pound) in nominal and real (2007) dollars.

Year or Avg.	Chinook				Coho				Total ^{a/}	
	Nominal Value (\$*1,000)	Real Value (\$*1,000)	Nominal Price Per Pound (\$)	Real Price Per Pound (\$)	Nominal Value (\$*1,000)	Real Value (\$*1,000)	Nominal Price Per Pound (\$)	Real Price Per Pound (\$)	Nominal Value (\$*1,000)	Real Value (\$*1,000)
1971-1975	2,036	7,261	0.89	3.23	3,658	13,364	0.64	2.30	5,694	20,624
1976-1980	5,290	13,670	2.17	5.59	6,389	17,014	1.51	3.89	11,679	30,684
1981-1985	3,582	6,676	2.46	4.55	2,248	4,371	1.45	2.69	5,830	11,047
1986-1990	9,381	14,875	2.47	3.89	3,203	5,091	1.54	2.43	12,584	19,966
1991-1995	1,971	2,666	2.24	3.05	326	461	0.64	0.89	2,297	3,127
1996	3,007	3,834	1.56	1.99	-	-	-	-	3,007	3,834
1997	2,469	3,097	1.60	2.01	-	-	-	-	2,469	3,097
1998	2,297	2,850	1.64	2.03	-	-	-	-	2,297	2,850
1999	1,400	1,712	1.94	2.37	1	1	1.03	1.26	1,401	1,713
2000	2,988	3,576	2.02	2.42	75	90	1.06	1.27	3,063	3,666
2001	4,680	5,469	1.61	1.88	41	48	0.79	0.92	4,721	5,518
2002	5,383	6,183	1.54	1.77	8	9	0.75	0.86	5,391	6,192
2003	7,186	8,082	1.97	2.22	36	41	0.85	0.96	7,222	8,123
2004	9,832	10,750	3.45	3.77	86	94	1.24	1.36	9,919	10,844
2005	8,466	8,966	3.17	3.36	37	39	1.87	1.98	8,503	9,005
2006	2,663	2,734	5.48	5.63	38	39	2.90	2.98	2,701	2,773
2007 ^{b/}	2,630	2,630	5.66	5.66	193	193	1.90	1.90	2,822	2,822

a/ Does not include pink salmon landings.

b/ Preliminary.

TABLE IV-4. Non-Indian troll Chinook and coho landed in Washington, estimates of exvessel value, and average price (dollars per dressed pound) in nominal and real (2007) dollars.^{a/}

Year or Avg.	Chinook				Coho				Total ^{b/}	
	Nominal Value (\$*1,000)	Real Value (\$*1,000)	Nominal Price Per Pound (\$)	Real Price Per Pound (\$)	Nominal Value (\$*1,000)	Real Value (\$*1,000)	Nominal Price Per Pound (\$)	Real Price Per Pound (\$)	Nominal Value (\$*1,000)	Real Value (\$*1,000)
1971-1975	2,714	9,804	0.89	3.24	3,060	11,081	0.66	2.40	5,775	20,885
1976-1980	5,313	14,020	2.39	6.12	6,086	16,021	1.67	4.29	11,399	30,040
1981-1985	1,954	3,748	2.46	4.55	1,272	2,449	1.32	2.44	3,225	6,198
1986-1990 ^{c/}	1,310	2,072	2.61	4.13	360	560	1.62	2.56	1,670	2,633
1991-1995 ^{d/}	550	762	2.17	2.96	120	166	0.86	1.18	670	929
1996	d/	d/	d/	d/	59	75	0.86	1.10	d/	d/
1997	125	157	1.55	1.94	-	-	-	-	125	157
1998	123	152	1.51	1.87	-	-	-	-	123	152
1999	377	461	1.90	2.32	19	23	0.88	1.08	396	484
2000	224	269	1.71	2.05	34	41	1.09	1.30	258	309
2001	349	408	1.44	1.68	34	40	0.69	0.81	383	447
2002	756	868	1.11	1.27	2	2	1.58	1.81	758	870
2003	951	1,069	1.15	1.29	40	45	0.74	0.83	991	1,115
2004	1,079	1,180	2.14	2.34	106	115	1.16	1.27	1,185	1,295
2005	1,273	1,349	2.70	2.86	16	17	1.65	1.75	1,290	1,366
2006	1,029	1,056	4.64	4.76	16	17	1.69	1.74	1,045	1,073
2007	905	905	4.90	4.90	48	48	1.46	1.46	953	953

a/ All values in this table are based on preliminary information available at the start of each year's salmon review .

b/ Does not include pink salmon landings.

c/ There was no legal coho fishery in 1988. The value used in this average for 1988 is for landings of fish caught south of Cape Falcon and seizures of illegal fish.

d/ In 1994-1996 Chinook were caught off Oregon and landed in Washington. Value information was not provided to preserve confidentiality.

TABLE IV-5. Non-Indian troll pink salmon landed in Oregon and Washington, estimates of exvessel value, and average price (dollars per dressed pound) in nominal and real (2007) dollars.

Year or Avg. ^{a/}	Oregon				Washington				Total ^{b/}	
	Nominal Value (\$*1,000)	Real Value (\$*1,000)	Nominal Price Per Pound (\$)	Real Price Per Pound (\$)	Nominal Value (\$*1,000)	Real Value (\$*1,000)	Nominal Price Per Pound (\$)	Real Price Per Pound (\$)	Nominal Value (\$*1,000)	Real Value (\$*1,000)
1976-1980	167	451	0.75	1.93	1,200	3,058	0.54	1.40	1,367	3,509
1981-1985	129	244	0.74	1.37	287	550	0.41	0.77	416	794
1986-1990	41	67	0.77	1.21	57	87	0.66	1.05	98	154
1991-1995	1	2	0.88	1.19	38	53	0.64	0.87	39	54
1997	b/	b/	0.56	0.71	b/	b/	0.20	0.25	b/	b/
1999	b/	b/	0.67	0.82	b/	b/	0.38	0.46	b/	b/
2001	1	1	0.58	0.68	b/	b/	0.22	0.26	1	1
2003	b/	b/	0.85	0.96	b/	b/	0.30	0.34	b/	b/
2005	b/	b/	1.25	1.32	b/	b/	0.52	0.55	b/	b/
2007 ^{c/}	b/	b/	1.03	1.03	b/	b/	0.33	0.33	b/	b/

a/ Odd year averages.

b/ Less than \$500.

c/ Preliminary.

TABLE IV-6. Pounds of salmon landed by the commercial troll ocean fishery for major California port areas.^{a/}

Year or Avg.	Crescent City	Eureka	Fort Bragg	San Francisco	Monterey	State Total
CHINOOK (thousands of dressed pounds)						
1976-1980	393	1,403	1,449	1,733	889	5,867
1981-1985	350	428	1,128	1,806	742	4,454
1986-1990	155	405	2,299	3,648	1,592	8,097
1991-1995	2	25	183	1,893	1,326	3,429
1996	3	92	278	1,695	2,046	4,113
1997	c/	14	35	2,711	2,488	5,248
1998	1	22	35	1,081	709	1,847
1999	3	27	30	2,681	1,105	3,846
2000	3	20	354	2,607	2,148	5,131
2001	3	61	192	1,735	418	2,409
2002	54	108	872	3,060	912	5,008
2003	38	7	3,096	2,753	498	6,392
2004	308	65	1,292	3,712	853	6,230
2005	25	77	889	2,258	1,098	4,347
2006	-	-	273	684	87	1,043
2007 ^{d/}	34	82	350	882	165	1,513
COHO (thousands of dressed pounds)						
1976-1980	360	391	277	109	48	1,184
1981-1985	89	104	89	54	9	345
1986-1990	22	43	136	53	9	262
1991-1995	c/	4	11	56	23	94
1996	-	-	-	-	-	-
1997	-	-	-	-	-	-
1998	-	-	-	-	-	-
1999	-	-	-	-	-	-
2000	-	-	-	-	-	-
2001	-	-	-	-	-	-
2002	-	-	-	-	-	-
2003	-	-	-	-	-	-
2004	-	-	-	-	-	-
2005	-	-	-	-	-	-
2006	-	-	-	-	-	-
2007 ^{d/}	-	-	-	-	-	-

a/ The major port areas listed may include smaller ports as follows: Crescent City includes only Crescent City; Eureka includes Trinidad and Humboldt Bay; Fort Bragg includes Shelter Cove, Noyo Harbor, Mendocino, and Pt. Arena; San Francisco includes Bodega Bay, Sausalito, Berkeley, and Half Moon Bay; Monterey includes Santa Cruz, Moss Landing, Morro Bay, Avila, and all ports south of Pt. Conception.

b/ Prior to 2005 landings were based on catch area, not port of landing.

c/ Less than 500 pounds.

d/ Preliminary.

TABLE IV-7. Pounds of salmon landed by the commercial troll ocean fishery for major Oregon port areas.^{a/}

Year or Avg.	Astoria	Tillamook	New port	Coos Bay	Brookings	State Total
CHINOOK (thousands of dressed pounds)						
1976-1980	171	118	530	908	700	2,427
1981-1985	92	45	271	638	386	1,432
1986-1990	52	264	829	2,118	468	3,731
1991-1995	7	86	580	235	31	940
1996	21	125	1,219	417	142	1,926
1997	3	32	1,053	381	73	1,542
1998	b/	66	953	326	52	1,398
1999	13	32	194	403	80	721
2000	89	97	532	648	114	1,481
2001	73	223	1,673	776	152	2,897
2002	330	275	1,442	1,223	218	3,488
2003	265	245	1,634	1,353	142	3,639
2004	134	113	1,121	1,214	267	2,850
2005	130	214	1,034	1,054	239	2,671
2006	99	67	218	56	45	486
2007 ^{c/}	22	37	76	232	98	464
COHO (thousands of dressed pounds)						
1976-1980	385	660	1,190	1,661	357	4,252
1981-1985	133	293	451	550	111	1,537
1986-1990	73	473	693	648	69	1,957
1991-1995	17	93	110	104	1	325
1996	-	-	-	-	-	-
1997	-	-	-	-	-	-
1998	-	-	-	-	-	-
1999	1	-	-	-	-	1
2000	71	-	-	-	-	71
2001	50	b/	2	-	-	52
2002	6	5	-	-	-	11
2003	32	11	-	-	-	43
2004	47	22	-	-	-	70
2005	9	11	-	-	-	20
2006	8	5	-	-	-	13
2007 ^{c/}	37	34	13	14	3	101

a/ The major port areas listed include smaller ports as follows: Astoria also includes Gearhart/Seaside and Cannon Beach; Tillamook also includes Garibaldi, Netarts, Pacific City, and Nehalem Bay; New port also includes Depoe Bay, Siletz Bay, Salmon River, and Waldport; Coos Bay also includes Florence, Winchester Bay, Charleston, and Bandon; Brookings also includes Port Orford and Gold Beach.

b/ Less than 500 pounds.

c/ Preliminary.

TABLE IV-8. Pounds of salmon landed by the non-Indian commercial troll ocean fishery for major Washington port areas.^{a/b/}

Year or Avg.	Neah Bay	La Push	Westport	Ilwaco	Coastal Community		State Total ^{c/}
					Total	Puget Sound	
CHINOOK (thousands of dressed pounds)							
1976-1980	288	421	919	261	1,889	426	2,315
1981-1985	88	32	370	74	564	124	689
1986-1990	71	17	234	48	371	122	493
1991	128	7	127	14	276	32	308
1992	160	46	232	10	447	58	507
1993	122	35	132	2	291	41	332
1994 ^{d/}	-	-	-	-	-	7	7
1995 ^{d/}	-	-	3	-	3	12	15
1996 ^{d/}	-	-	4	1	5	13	18
1997	20	e/	45	-	65	15	80
1998	30	-	34	-	64	18	82
1999	62	2	66	3	133	65	198
2000	85	1	38	8	131	e/	131
2001	97	-	138	6	241	-	241
2002	262	33	322	61	678	-	678
2003	470	67	243	29	810	12	821
2004	250	74	158	15	497	7	504
2005	170	100	181	20	471	e/	471
2006	86	64	40	26	216	5	222
2007	38	31	105	8	182	2	184
COHO (thousands of dressed pounds)							
1976-1980	600	786	1,066	678	3,130	496	3,626
1981-1985	133	63	277	142	616	128	744
1986-1990	70	19	97	53	239	19	259
1991	87	16	126	45	274	31	304
1992	25	13	21	4	63	12	75
1993	11	7	43	2	63	3	66
1994	-	-	-	-	-	-	-
1995	84	18	7	-	109	2	111
1996	45	1	23	-	68	e/	68
1997	-	-	-	-	-	-	-
1998	-	-	-	-	-	-	-
1999	7	1	4	1	13	9	21
2000	-	-	15	16	31	e/	31
2001	2	-	39	9	49	-	49
2002	-	-	e/	1	1	-	1
2003	11	12	21	8	52	2	54
2004	12	20	53	4	89	1	91
2005	2	1	3	5	10	-	10
2006	3	3	3	1	10	e/	10
2007	3	3	9	17	33	-	33

a/ All values in this table are based on preliminary information available at the start of each year's salmon review.

b/ The major port areas listed may include smaller ports as follows: Neah Bay includes only Neah Bay; La Push also includes Kalaloch; Westport also includes Aberdeen, Bay City, Copalis Beach, Hoquiam, Moclips, Taholah, Bay Center, Grayland Beach, Raymond, South Bend, and Tokeland; Ilwaco also includes Long Beach, Nahcotta, Naselle, and all Columbia River Ports; Puget Sound includes all Puget Sound ports east of Neah Bay.

c/ State total includes landings where port of landing is not specified.

d/ There was no ocean commercial fishery for Chinook north of Cape Falcon; however, Chinook were caught off Oregon and landed in Washington.

e/ Less than 500 pounds.

TABLE IV-9. Exvessel values (expressed in 2007 dollars) of inriver commercial harvest of Columbia River salmon.^{a/}

Fishery	Species	Average Price Per Landed Pound ^{b/} (dollars)						Exvessel Value (thousands of dollars)						Pounds (thousands)					
		1987-2002		2003-2004		2005-2007 ^{c/}		1987-2002		2003-2004		2005-2007 ^{c/}		1987-2002		2003-2004		2005-2007 ^{c/}	
OREGON																			
Non-Indian ^{d/}	Chinook																		
Gillnet	Spring	4.11	2.95	4.07	3.61	4.80	5.39	488	435	1,122	333	631	765	114	147	276	92	131	142
	Fall Brights	1.42	0.81	1.50	1.72	2.20	2.83	1,734	465	613	468	654	353	760	574	409	273	298	135
	Tules	0.40	0.11	0.24	0.28	0.29	0.05	102	20	54	36	19	1	155	174	224	132	65	e/
	Coho	1.25	0.58	0.98	1.13	1.34	1.62	1,075	890	743	894	644	308	739	1,522	755	789	478	189
	Chum	0.44	-	0.27	0.33	0.27	0.75	e/	-	e/	e/	e/	e/	2	-	e/	e/	e/	e/
	TOTAL							3,399	1,809	2,532	1,732	1,947	1,427	1,768	2,417	1,664	1,286	971	466
WASHINGTON^{e/h/}																			
Treaty Indian ^{f/}	Chinook																		
All Gears	Spring	2.59	4.61	2.02	-	3.08	3.75	6	6	162	-	e/	63	3	1	80	-	e/	17
	Fall Brights	1.34	0.79	1.24	1.10	1.57	2.61	723	15	588	220	324	361	357	19	476	200	206	138
	Tules	0.34	-	0.11	0.18	0.27	0.03	19	-	33	12	3	1	66	-	299	67	11	25
	Coho	0.86	-	0.65	0.98	1.28	1.07	6	-	19	1	15	15	5	-	29	1	12	14
	TOTAL							753	21	801	233	342	440	431	20	884	267	229	194
Non-Indian	Chinook																		
Gillnet	Spring	4.35	4.60	4.30	3.79	3.77	7.07	226	90	297	233	328	127	45	20	69	62	87	18
	Fall ^{g/}	1.32	0.65	1.41	1.47	1.98	2.52	663	290	477	346	431	230	326	448	338	235	218	91
	Coho	1.24	0.63	1.03	1.09	1.37	1.63	437	505	380	208	284	250	343	799	370	191	207	154
	Chum	0.39	0.17	0.27	0.85	-	0.20	1	e/	e/	e/	-	e/	1	e/	e/	e/	-	e/
	TOTAL							1,326	885	1,154	788	1,044	607	715	1,267	777	487	512	263
Treaty Indian ^{f/}	Chinook																		
All Gears ^{i/}	Spring	3.05	1.20	1.72	1.79	2.41	7.00	45	159	180	120	437	e/	28	133	105	67	180	e/
	Fall ^{g/}	0.95	0.20	0.59	0.54	1.44	1.94	1,088	329	476	758	1,303	1,240	870	1,607	806	1,404	905	638
	Coho	0.90	0.12	0.24	0.32	0.57	0.78	16	3	10	11	26	52	17	23	43	34	45	66
	TOTAL							1,149	491	666	888	1,765	1,293	920	1,762	954	1,504	1,130	705
Columbia River Total		-	-	-	-	-	-	6,627	3,206	5,154	3,641	5,098	3,767	6,627	5,467	4,280	3,545	2,842	1,628

a/ Excluding pink, sockeye, and steelhead.

b/ Gillnet exvessel salmon prices are recorded in round weight and therefore are not strictly comparable to exvessel troll prices.

c/ Preliminary. (All Washington values in this table are based on preliminary information available when each year's Salmon Review is drafted.)

d/ Mainstem below Bonneville and select areas (Youngs Bay, Tongue Point, Blind Slough, and Deep River).

e/ Less than \$500 or 500 pounds.

f/ Treaty Indian landings and values do not include direct sales to consumers.

g/ Includes fall brights, tules, and jacks. Price changes may reflect a change in the mix of brights, tules, and jacks rather than annual price changes.

h/ Washington prices for years prior to 2000 are based on a combination of Washington and Oregon value information.

i/ Primarily mainstem Columbia set gillnet but also includes Klickitat dipnet, Drano Lake (Little White Salmon River mouth), and Priest Rapids Pool fisheries.

TABLE IV-10. California, Oregon, and Washington ocean recreational salmon effort in thousands of angler trips and catch in thousands of fish by boat type. (Page 1 of 2)

Year or Avg.	Angler Trips		Chinook Catch ^{a/}		Coho Catch ^{a/}	
	Charter	Private	Charter	Private	Charter	Private
CALIFORNIA						
1981-1985	68.9	78.1	74.6	34.4	1.5	18.3
1986-1990	95.9	144.8	100.1	66.3	5.3	35.1
1991-1995	81.7	131.8	85.9	83.0	3.8	18.7
1996	84.6	140.9	72.9	91.2	b/	0.6
1997	102.6	131.7	122.3	106.6	b/	0.5
1998	67.0	85.0	59.7	62.3	b/	0.1
1999	62.6	84.4	40.5	47.4	b/	0.6
2000	94.0	120.4	91.9	94.0	b/	0.4
2001	69.9	95.2	43.2	55.6	0.1	1.2
2002	86.6	123.4	85.1	96.9	b/	0.8
2003	59.4	75.3	48.3	46.4	0.1	0.6
2004	97.7	121.0	124.7	96.5	b/	1.4
2005	69.1	103.0	61.3	81.9	b/	0.7
2006	44.9	81.6	35.3	61.0	b/	1.6
2007 ^{c/}	31.2	74.5	12.3	35.4	b/	0.7
OREGON^{d/e/}						
1979	73.7	187.7	5.4	13.3	59.8	101.8
1980	79.0	218.9	5.1	11.9	98.3	207.5
1981-1985	45.7	187.9	6.2	26.9	48.0	117.6
1986-1990	56.5	184.6	7.0	28.8	71.6	148.4
1991-1995	18.0	81.8	1.3	8.0	27.1	76.2
1996	5.6	38.3	1.2	10.1	3.0	4.2
1997	3.9	26.4	1.5	6.2	2.4	3.6
1998	1.8	24.2	0.5	3.6	0.5	1.8
1999	5.5	43.9	0.9	6.9	3.4	10.3
2000	9.8	68.7	3.6	21.8	7.5	25.7
2001	18.2	102.3	6.4	20.8	19.3	75.0
2002	15.7	91.9	7.9	39.5	9.0	27.5
2003	23.4	121.1	8.8	31.8	23.7	90.0
2004	21.1	124.6	14.6	41.8	13.1	58.8
2005	9.9	66.1	4.5	23.4	3.1	10.6
2006	8.0	54.4	1.5	10.1	3.6	12.0
2007 ^{c/}	11.4	76.7	0.6	6.3	10.6	50.1

TABLE IV-10. California, Oregon, and Washington ocean recreational salmon effort in thousands of angler trips and catch in thousands of fish by boat type. (Page 2 of 2)

Year or Avg.	Angler Trips		Chinook Catch ^{a/}		Coho Catch ^{a/}	
	Charter	Private	Charter	Private	Charter	Private
	WASHINGTON^{f/g/}					
1979	220.8	89.8	61.1	15.7	227.9	62.4
1980	193.9	86.2	41.1	12.5	288.4	73.1
1981-1985	102.0	69.7	42.6	13.8	113.3	69.2
1986-1990	53.5	59.4	16.0	10.0	78.0	77.6
1991-1995	28.0	45.1	4.5	4.2	41.5	54.8
1996	15.3	23.5	b/	0.2	24.5	24.4
1997	12.5	15.1	1.7	2.3	12.5	12.8
1998	5.5	6.8	1.1	0.9	5.6	7.1
1999	17.5	29.9	5.7	4.1	16.3	23.7
2000	17.1	27.9	5.1	3.4	27.9	35.8
2001	41.2	72.4	11.9	10.8	66.2	98.2
2002	37.0	57.4	30.9	27.0	30.4	43.7
2003	44.5	75.5	16.0	18.1	53.4	84.9
2004	36.5	73.1	10.3	14.6	37.6	75.1
2005	31.7	58.9	15.9	20.4	19.2	32.6
2006	24.5	39.1	4.0	6.7	16.2	19.9
2007 ^{c/}	26.7	45.9	3.1	5.9	33.7	50.1

a/ Catch numbers may include some illegal harvest.

b/ Fewer than 50 fish.

c/ Preliminary.

d/ Salmon data from surveyed ports only. These generally include Astoria, Garibaldi, Depoe Bay, Newport, Winchester Bay, Coos Bay, and Brookings. Since 1981, Pacific City and Florence have also been included. Gold Beach data are included from 1981-1987. Astoria was not included in 1994.

e/ Numbers do not include angling from the Columbia River jetty.

f/ Numbers do not include angling from the Columbia River jetty or from the late-season state waters Area 4B fishery.

g/ Values for 1982-1985 include some inriver Columbia River fishing after closure of the ocean fishery.

TABLE IV-11. Estimates of California recreational ocean salmon angler trips (thousands) by port area and boat type. (Page 1 of 1)

Year or Avg.	Crescent City	Eureka	Fort Bragg	San Francisco	Monterey	State Total
CHARTER TRIPS						
1976-1980	1.5	1.2	2.4	63.5	4.0	72.7
1981-1985	0.7	1.3	1.8	62.1	3.0	68.9
1986-1990	1.0	3.5	4.0	74.3	13.1	95.9
1991-1995	0.4	0.8	2.8	55.7	22.0	81.7
1996	a/	0.6	5.1	57.6	21.4	84.6
1997	-	0.8	2.2	69.1	30.6	102.7
1998	-	0.3	2.7	44.2	19.7	66.9
1999	-	0.4	2.3	51.0	8.9	62.6
2000	0.1	1.6	8.6	53.9	29.9	94.0
2001	a/	1.4	9.7	43.4	15.4	69.9
2002	-	1.6	10.7	54.9	19.4	86.6
2003	-	1.1	8.2	38.7	11.4	59.4
2004	0.1	1.9	10.7	63.4	21.5	97.7
2005	-	0.9	8.9	45.8	13.5	69.1
2006	-	0.7	6.9	29.2	8.0	44.9
2007 ^{b/}	-	1.6	5.4	20.7	3.5	31.2
PRIVATE TRIPS						
1976-1980	18.4	22.7	9.3	34.4	6.0	90.8
1981-1985	22.4	21.8	7.8	16.8	9.3	78.1
1986-1990	38.6	34.4	11.4	24.3	36.1	144.8
1991-1995	13.9	14.0	17.6	37.1	49.3	131.9
1996	11.3	13.6	26.2	46.6	43.2	140.9
1997	6.6	11.6	18.0	42.1	53.5	131.7
1998	3.3	6.4	5.7	36.9	32.7	85.0
1999	5.8	11.6	7.9	38.8	20.3	84.4
2000	7.2	11.5	17.0	29.8	54.9	120.4
2001	8.6	14.7	21.1	28.1	22.7	95.2
2002	3.9	16.1	21.1	33.9	48.5	123.4
2003	2.2	12.5	15.5	27.9	17.1	75.3
2004	3.1	20.5	19.8	42.7	35.0	121.0
2005	2.5	13.9	15.4	39.0	32.2	103.0
2006	1.5	14.2	14.1	32.1	19.7	81.6
2007 ^{b/}	2.1	16.8	11.7	22.2	21.7	74.5
TOTAL TRIPS						
1976-1980	20.0	23.9	11.7	97.9	10.0	163.5
1981-1985	23.1	23.1	9.6	78.9	12.2	147.0
1986-1990	39.6	37.9	15.4	98.6	49.2	240.7
1986-1990	14.3	14.8	20.4	92.8	71.2	213.6
1996	11.3	14.2	31.3	104.2	64.5	225.4
1997	6.6	12.4	20.2	111.2	84.0	234.4
1998	3.3	6.7	8.4	81.1	52.4	151.9
1999	5.8	12.0	10.2	89.8	29.2	147.0
2000	7.2	13.1	25.6	83.7	84.8	214.4
2001	8.6	16.0	30.8	71.5	38.2	165.1
2002	3.9	17.7	31.8	88.8	67.9	210.1
2003	2.2	13.6	23.7	66.6	28.5	134.6
2004	3.2	22.4	30.6	106.1	56.5	218.7
2005	2.5	14.8	24.3	84.8	45.7	172.1
2006	1.5	15.0	21.0	61.4	27.7	126.5
2007 ^{b/}	2.1	18.4	17.1	42.9	25.2	105.7

a/ Few er than 50 angler trips.

b/ Preliminary.

TABLE IV-12. Estimates of Oregon recreational ocean salmon angler trips (thousands) by port area and boat type. (Page 1 of 1)

Year or Avg.	Astoria	Tillamook	New port	Coos Bay	Brookings	State Total
CHARTER TRIPS						
1979	18.5	2.8	26.7	22.7	3.0	73.7
1980	26.3	3.7	26.7	19.6	2.8	79.1
1981-1985	10.3	3.0	17.2	11.9	3.3	45.7
1986-1990	7.1	5.3	27.5	13.0	3.6	56.5
1991-1995 ^{a/}	4.3	1.6	7.9	3.5	0.7	18.0
1996	1.9	0.8	2.1	0.1	0.6	5.6
1997	1.3	0.3	1.8	-	0.5	3.9
1998	0.4	0.1	0.8	0.2	0.3	1.8
1999	1.7	0.3	2.3	0.5	0.7	5.5
2000	1.2	0.6	4.8	2.3	0.8	9.8
2001	4.3	1.4	8.8	3.0	0.7	18.2
2002	3.1	1.6	7.1	3.5	0.3	15.7
2003	3.9	2.0	13.0	4.0	0.5	23.4
2004	3.0	2.5	11.1	3.8	0.6	21.1
2005	2.3	1.0	3.7	2.6	0.3	9.9
2006	2.1	0.6	3.0	2.0	0.3	8.0
2007 ^{b/}	2.6	1.1	5.6	1.9	0.2	11.4
PRIVATE TRIPS						
1979	24.3	16.3	45.4	52.9	48.8	187.7
1980	20.1	29.3	56.6	65.2	47.7	218.9
1981-1985	15.6	27.1	40.4	51.8	53.0	187.9
1986-1990	10.6	23.7	47.1	48.4	54.8	184.5
1991-1995 ^{a/}	8.5	12.0	17.0	22.4	22.0	82.0
1996	3.7	7.5	0.6	3.8	22.7	38.3
1997	2.3	3.4	0.6	3.9	16.1	26.4
1998	1.7	5.9	0.5	2.2	13.8	24.2
1999	5.7	10.9	5.0	7.1	15.1	43.8
2000	7.2	10.9	8.2	21.2	21.2	68.7
2001	19.0	15.1	14.8	28.1	25.4	102.4
2002	9.0	22.8	10.9	29.9	19.4	91.9
2003	15.4	26.0	26.5	38.9	14.3	121.1
2004	15.6	26.8	27.9	36.7	17.7	124.6
2005	11.0	11.1	9.7	22.1	12.3	66.1
2006	6.2	15.3	7.4	15.2	10.4	54.4
2007 ^{b/}	9.8	19.8	15.2	21.0	10.9	76.7
TOTAL TRIPS						
1979	42.8	19.1	72.1	75.6	51.8	261.4
1980	46.4	33.0	83.3	84.8	50.5	298.0
1981-1985	26.0	30.0	57.5	63.7	56.3	233.5
1986-1990	17.7	29.0	74.6	61.4	58.4	241.0
1991-1995 ^{a/}	12.8	13.6	24.9	26.0	22.7	100.0
1996	5.6	8.3	2.7	3.9	23.3	43.9
1997	3.6	3.7	2.4	3.9	16.6	30.3
1998	2.1	6.0	1.3	2.4	14.1	26.0
1999	7.4	11.2	7.3	7.6	15.8	49.3
2000	8.4	11.5	13.0	23.5	22.0	78.5
2001	23.3	16.5	23.6	31.1	26.1	120.6
2002	12.1	24.4	18.1	33.4	19.7	107.6
2003	19.3	28.0	39.6	42.9	14.8	144.5
2004	18.6	29.3	39.0	40.5	18.3	145.7
2005	13.3	12.1	13.4	24.6	12.6	76.0
2006	8.2	15.9	10.4	17.2	10.6	62.3
2007 ^{b/}	12.4	20.9	20.7	23.0	11.1	88.1

a/ The fishery north of Cape Falcon was closed in 1994, and it is assumed that no trips were taken out of Astoria into the south of Cape Falcon area. No samplers were stationed in Astoria.

b/ Preliminary.

TABLE IV-13. Estimates of Washington recreational ocean salmon angler trips (thousands) by port area and boat type.
(Page 1 of 1)

Year or Avg.	Neah Bay ^{a/}	La Push	Westport	Ilwaco ^{b/}	State Total
CHARTER TRIPS					
1984 ^{c/}	0.3	-	11.6	18.0	29.9
1985 ^{c/}	2.0	-	42.2	20.7	64.9
1986-1990	2.0	-	35.7	15.9	53.5
1991-1995	0.7	0.1	19.4	7.9	28.0
1996	0.2	d/	10.3	4.8	15.3
1997	0.1	0.1	10.0	2.4	12.5
1998	-	-	4.5	1.1	5.5
1999	0.5	0.1	11.5	5.5	17.5
2000	0.7	0.1	12.2	4.1	17.1
2001	1.4	0.3	25.6	13.9	41.2
2002	1.5	0.4	24.5	10.6	37.0
2003	2.0	0.9	27.3	14.3	44.5
2004	1.9	0.6	22.5	11.4	36.5
2005	1.2	0.6	20.5	9.4	31.7
2006	0.5	0.5	15.4	8.0	24.5
2007 ^{e/}	0.6	0.4	15.7	10.1	26.7
PRIVATE TRIPS					
1984 ^{c/}	8.3	0.2	2.3	36.0	46.8
1985 ^{c/}	15.2	1.5	13.7	19.4	49.8
1986-1990	16.9	2.5	16.6	23.4	59.4
1991-1995	16.4	2.8	18.5	25.4	63.1
1996	9.1	1.3	5.2	7.9	23.5
1997	2.8	0.9	7.3	4.1	15.1
1998	-	0.6	3.5	2.6	6.8
1999	7.6	2.9	7.6	11.8	29.9
2000	7.3	1.8	7.7	11.1	27.9
2001	16.6	3.1	24.1	28.7	72.4
2002	12.2	3.0	16.9	25.3	57.4
2003	18.4	3.5	20.7	32.9	75.5
2004	24.2	3.9	15.7	29.3	73.1
2005	17.2	4.4	14.7	22.6	58.9
2006	12.9	3.6	9.1	13.5	39.1
2007 ^{e/}	12.8	2.9	10.2	20.0	45.9
TOTAL TRIPS					
1984 ^{c/}	8.6	0.2	13.9	54.0	76.7
1985 ^{c/}	17.2	1.5	55.9	40.1	114.7
1986-1990	18.9	2.5	52.3	39.3	113.0
1991-1995	17.1	2.9	37.9	33.3	91.1
1996	9.3	1.3	15.5	12.7	38.8
1997	2.9	0.9	17.3	6.5	27.5
1998	-	0.6	8.0	3.7	12.3
1999	8.1	3.0	19.1	17.3	47.4
2000	7.9	2.0	19.8	15.2	45.0
2001	17.9	3.4	49.7	42.5	113.6
2002	13.7	3.4	41.4	35.9	94.4
2003	20.4	4.4	48.0	47.1	120.0
2004	26.1	4.6	38.2	40.6	109.5
2005	18.5	4.9	35.2	32.1	90.6
2006	13.4	4.1	24.5	21.5	63.6
2007 ^{e/}	13.4	3.3	25.9	30.1	72.7

a/ Does not include effort from the late-season state water Area 4B fishery.

b/ Does not include effort from the Columbia River Jetty.

c/ Values for 1984 and 1985 include some Columbia River fishing after closure of the ocean fishery.

d/ Fewer than 50 angler trips.

e/ Preliminary.

TABLE IV-14. Oregon and Washington recreational salmon, bottomfish, and sturgeon angler trips (thousands) by ocean port area and boat type for the area north of Cape Falcon. (Page 1 of 3)

Year	Columbia River and Buoy 10					Westport			La Push			Neah Bay and Area 4B Add-On		
	Charter	Private	Subtotal	Jetty	Total	Charter	Private	Total	Charter	Private	Total	Charter	Private	Total
SALMON EFFORT														
1984	NA	NA	-	NA	54.0	11.6	2.3	13.9	0.0	0.2	0.2	0.3	8.3	8.6
1985	NA	NA	-	NA	90.3	42.2	13.7	55.9	0.0	1.5	1.5	2.0	15.2	17.2
1986	NA	NA	-	NA	144.3	36.6	14.8	51.4	0.0	1.7	1.7	2.4	17.4	19.8
1987	39.5	130.0	169.5	12.4	181.9	34.1	9.8	43.9	0.0	2.0	2.0	1.9	17.8	19.7
1988	34.5	154.4	188.9	16.9	205.8	23.5	13.9	37.4	0.0	2.8	2.8	2.0	14.8	16.8
1989	40.4	169.2	209.6	22.9	232.5	40.8	18.7	59.5	0.0	1.6	1.6	2.8	25.5	28.3
1990	32.8	128.7	161.5	5.7	167.2	43.4	25.9	69.3	0.0	4.2	4.2	3.0	30.8	33.8
1991	37.9	172.7	210.6	35.5	246.1	28.6	24.2	52.8	0.2	3.3	3.5	1.9	23.5	25.4
1992	22.3	116.6	138.9	28.4	167.3	28.1	25.6	53.7	0.2	2.3	2.5	1.1	18.6	19.7
1993	20.2	103.3	123.5	24.6	148.1	27.4	23.5	50.9	0.1	2.8	2.9	1.6	25.7	27.3
1994	0.5	6.3	6.8	3.6	10.4	-	-	-	-	-	-	-	-	-
1995	9.0	43.4	52.4	8.5	60.9	12.7	9.0	21.7	0.1	1.4	1.5	0.3	9.2	9.5
1996	7.3	26.8	34.1	7.5	41.6	10.3	5.2	15.5	a/	1.3	1.3	0.3	10.6	10.9
1997	8.4	53.0	61.3	7.4	68.7	10.0	7.3	17.3	0.1	0.9	0.9	0.2	4.6	4.8
1998	3.2	30.7	33.9	3.6	37.5	4.5	3.5	8.0	0.0	0.6	0.6	0.1	6.3	6.4
1999	8.7	63.9	72.6	6.2	78.8	11.5	7.6	19.1	0.1	2.9	2.9	0.5	7.6	8.1
2000	9.8	82.2	92.0	7.0	99.0	12.2	7.7	19.8	0.1	1.8	2.0	1.1	10.3	11.4
2001	22.5	165.0	187.5	17.0	204.5	25.6	24.1	49.7	0.3	3.1	3.4	1.4	16.8	18.1
2002	15.2	115.1	130.3	2.8	133.1	44.5	16.9	41.4	0.4	3.0	3.4	1.5	12.2	13.7
2003	19.3	133.3	152.7	7.2	159.8	27.3	20.7	48.0	0.9	3.5	4.4	2.0	18.4	20.4
2004	15.8	113.3	129.2	3.2	132.3	22.5	15.7	38.2	0.6	3.9	4.6	1.9	24.2	26.1
2005	12.0	88.5	100.5	c/	100.5	20.5	14.7	35.2	0.6	4.4	4.9	1.2	17.2	18.5
2006	10.4	59.8	70.2	1.7	71.9	15.4	9.1	24.5	0.5	3.6	4.1	0.5	12.9	13.4
2007 ^{bl}	13.6	64.2	77.8	c/	77.8	15.7	10.2	25.9	0.4	2.9	3.3	0.6	12.8	13.4

TABLE IV-14. Oregon and Washington recreational salmon, bottomfish, and sturgeon angler trips (thousands) by ocean port area and boat type for the area north of Cape Falcon.
(Page 2 of 3)

Year	Columbia River and Buoy 10					Westport			La Push			Neah Bay and Area 4B Add-On		
	Charter	Private	Subtotal	Jetty	Total	Charter	Private	Total	Charter	Private	Total	Charter	Private	Total
BOTTOMFISH EFFORT^{d/}														
1984	2.1	0.1	2.2	-	-	12.4	0.5	12.9	0.0	0.0	0.0	1.8	12.3	14.1
1985	1.9	0.2	2.1	-	-	15.3	1.0	16.3	0.0	0.1	0.1	3.0	10.6	13.6
1986	1.7	0.2	1.9	-	-	19.6	0.8	20.4	0.0	0.2	0.2	3.5	11.4	14.9
1987	1.7	0.3	2.0	0.5	2.5	21.1	1.2	22.3	0.0	0.5	0.5	5.6	16.0	21.6
1988	2.1	0.2	2.3	0.8	3.1	24.4	1.1	25.5	0.0	0.7	0.7	5.7	14.8	20.5
1989	1.2	0.6	1.8	1.5	3.3	19.3	1.0	20.3	0.0	0.6	0.6	6.8	16.3	23.1
1990	1.4	0.3	1.7	2.4	4.1	21.8	0.8	22.6	0.0	0.8	0.8	6.4	18.1	24.5
1991	1.3	0.4	1.7	1.8	3.5	23.5	1.1	24.6	0.0	0.9	0.9	5.9	18.2	24.1
1992	1.4	0.5	1.9	2.3	4.1	20.5	2.2	22.7	0.0	1.5	1.5	4.8	19.1	23.9
1993	2.2	0.6	2.8	2.6	5.4	21.5	1.8	23.0	0.1	1.1	1.2	5.1	19.2	24.3
1994	2.7	0.7	3.3	2.7	6.0	26.0	1.7	27.7	0.2	1.9	2.1	4.1	15.0	19.1
1995	1.3	0.9	2.3	2.2	4.4	21.1	1.6	22.7	a/	1.6	1.6	4.1	19.2	23.3
1996 ^{e/f/}	1.2	0.5	1.7	1.7	3.4	21.4	1.2	22.6	0.0	1.6	1.6	4.8	21.0	25.8
1997	1.2	0.7	2.0	2.5	4.4	19.2	1.4	20.6	0.0	2.2	2.2	4.9	22.7	27.7
1998	1.8	0.5	2.3	0.9	3.2	21.5	1.3	22.8	0.0	1.2	1.2	5.1	23.9	29.0
1999	1.0	0.5	1.5	0.5	2.0	17.1	1.2	18.3	0.1	1.0	1.1	4.5	20.3	24.9
2000	1.2	0.6	1.8	0.5	2.3	16.7	0.9	17.6	0.2	1.3	1.5	4.5	20.1	24.6
2001	2.8	0.4	3.2	0.9	4.1	13.9	1.2	15.1	0.3	0.9	1.2	4.7	16.5	21.2
2002	14.3	0.5	1.9	0.8	2.8	14.9	1.2	16.1	0.3	1.2	1.6	4.0	15.7	19.7
2003	2.4	0.5	2.9	0.9	3.8	16.3	1.8	18.2	1.0	2.5	3.6	5.2	21.4	26.6
2004	2.4	0.8	3.2	0.3	3.5	14.8	1.7	16.5	0.4	1.7	2.1	3.5	15.2	18.7
2005	2.5	1.1	3.7	c/	3.7	15.5	1.8	17.3	0.5	2.5	3.0	3.5	18.8	22.4
2006	3.6	1.2	4.9	0.9	5.7	17.7	1.8	19.5	0.3	2.8	3.1	4.4	16.9	21.3
2007 ^{b/}	3.1	1.5	4.6	c/	4.6	16.2	1.6	17.7	0.5	2.5	3.0	4.3	15.7	20.0

TABLE IV-14. Oregon and Washington recreational salmon, bottomfish, and sturgeon angler trips (thousands) by ocean port area and boat type for the area north of Cape Falcon. (Page 3 of 3)

Year	Columbia River and Buoy 10					Westport			La Push			Neah Bay and Area 4B Add-On		
	Charter	Private	Subtotal	Jetty	Total	Charter	Private	Total	Charter	Private	Total	Charter	Private	Total
STURGEON EFFORT^{g/}														
1984	1.7	28.4	30.1	-	30.1	-	-	-	-	-	-	-	-	-
1985	5.0	31.2	36.2	-	36.2	-	-	-	-	-	-	-	-	-
1986	5.7	35.7	41.4	-	41.4	-	-	-	-	-	-	-	-	-
1987	6.0	43.2	49.2	-	49.2	-	-	-	-	-	-	-	-	-
1988	6.2	32.4	38.5	-	38.5	-	-	-	-	-	-	-	-	-
1989	4.3	22.0	26.3	-	26.3	-	-	-	-	-	-	-	-	-
1990	3.9	28.0	31.9	-	31.9	-	-	-	-	-	-	-	-	-
1991	3.6	26.0	29.7	-	29.7	-	-	-	-	-	-	-	-	-
1992	5.0	38.3	43.3	-	43.3	-	-	-	-	-	-	-	-	-
1993	6.1	48.6	54.6	-	54.6	-	-	-	-	-	-	-	-	-
1994	7.5	40.4	47.8	-	47.8	-	-	-	-	-	-	-	-	-
1995	7.7	55.2	62.9	-	62.9	-	-	-	-	-	-	-	-	-
1996	11.1	45.2	56.3	-	56.3	-	-	-	-	-	-	-	-	-
1997	12.2	48.4	60.7	-	60.7	-	-	-	-	-	-	-	-	-
1998	14.2	64.3	78.5	-	78.5	-	-	-	-	-	-	-	-	-
1999	13.2	57.1	70.3	-	70.3	-	-	-	-	-	-	-	-	-
2000	11.6	52.1	63.7	-	63.7	-	-	-	-	-	-	-	-	-
2001	10.8	40.9	51.7	-	51.7	-	-	-	-	-	-	-	-	-
2002	9.9	45.9	55.8	-	55.8	-	-	-	-	-	-	-	-	-
2003	6.6	38.1	44.7	-	44.7	-	-	-	-	-	-	-	-	-
2004	7.4	32.2	39.6	-	39.6	-	-	-	-	-	-	-	-	-
2005	8.7	51.2	59.9	-	59.9	-	-	-	-	-	-	-	-	-
2006	6.7	37.3	44.0	-	44.0	-	-	-	-	-	-	-	-	-
2007 ^{b/}	7.9	39.8	47.7	-	47.7	-	-	-	-	-	-	-	-	-

a/ Fewer than 50 angler trips.

b/ Preliminary.

c/ Columbia River north jetty was not sampled in 2005 and 2007 due to construction limiting access.

d/ Oregon data is a minimum estimate, as the jetty is not sampled, and bottomfish sampling of vessels only occurs when the ocean is open for salmon.

e/ No Oregon bottomfish trips are included.

f/ Includes tuna trips: Ilwaco - 9 charter, 14 private; Westport - 784 charter, 0 private.

g/ Annual sturgeon angler trips for the lower Columbia River from the western tip of Puget Island to mouth.

TABLE IV-15. Buoy 10^{ab}/ and Area 4B add-on recreational salmon angler trips and catch by boat type. (Page 1 of 2)

Year or Avg.	Angler Trips			Chinook Catch			Coho Catch			Pink Catch	
	Charter	Private	Jetty	Charter	Private	Jetty	Charter	Private	Jetty	Charter	Private
OREGON BUOY 10											
1987-1990	4,002	38,619	4,029	793	6,415	29	3,292	18,348	690	-	-
1991-1995	1,528	21,547	4,555	122	1,318	30	1,625	14,520	1,389	-	-
1996	179	6,122	2,285	59	419	-	66	1,361	532	-	-
1997	1,071	16,207	2,744	273	4,032	-	592	5,411	761	-	-
1998	588	9,949	631	145	2,191	-	59	1,169	31	-	-
1999	454	19,030	1,370	125	3,834	9	18	3,357	146	-	-
2000	836	27,492	2,129	26	3,083	4	297	7,523	295	-	-
2001	1,616	54,444	4,115	47	5,578	10	1,481	56,403	523	-	-
2002	512	39,943	1,589	31	10,728	-	2	3,058	52	-	-
2003	991	45,461	2,315	47	7,903	-	624	28,518	526	-	-
2004	66	33,092	1,170	19	9,191	-	17	7,585	47	-	-
2005	135	33,051	935	18	6,875	6	51	4,785	36	-	-
2006	37	24,194	1,457	1	1,350	-	-	2,800	-	-	-
2007 ^{cl}	156	19,983	793	6	2,511	-	38	4,841	97	-	-
WASHINGTON BUOY 10											
1987-1990	10,678	71,927	6,567	1,907	14,398	68	8,353	40,415	1,627	1	11
1991-1995	4,162	41,770	5,908	466	3,710	42	5,178	31,681	1,426	-	16
1996	352	9,096	-	37	894	-	123	2,455	-	-	-
1997	3,614	30,334	1,755	1,125	7,701	22	2,143	11,290	160	-	-
1998	1,080	16,388	1,362	333	3,075	40	188	1,584	44	-	-
1999	1,055	27,672	-	185	5,697	-	175	5,165	-	-	-
2000	3,685	36,268	2,108	286	2,626	60	2,123	11,033	207	-	-
2001	2,765	62,944	-	-	6,791	-	3,282	70,349	-	-	-
2002	1,001	40,927	485	232	8,424	26	98	3,023	-	-	-
2003	216	39,844	-	22	8,344	-	139	24,633	-	-	-
2004	685	33,805	-	45	6,791	-	139	7,381	-	-	-
2005	183	20,879	-	5	2,383	-	34	1,972	-	-	-
2006	421	14,597	-	5	351	-	8	879	-	-	-
2007 ^{cl}	711	14,421	-	33	1,226	-	343	3,037	-	-	-

TABLE IV-15. Buoy 10^{a/b/} and Area 4B add-on recreational salmon angler trips and catch by boat type. (Page 2 of 2)

Year or Avg.	Angler Trips			Chinook Catch			Coho Catch			Pink Catch	
	Charter	Private	Jetty	Charter	Private	Jetty	Charter	Private	Jetty	Charter	Private
TOTAL BUOY 10											
1987-1990	14,680	110,547	10,596	2,700	20,812	98	11,645	58,763	2,317	1	11
1991-1995	5,690	63,317	10,463	588	5,029	72	6,803	46,201	2,814	0	16
1996	531	15,218	2,285	96	1,313	0	189	3,816	532	0	0
1997	4,685	46,541	4,499	1,398	11,733	22	2,735	16,701	921	0	0
1998	1,668	26,337	1,993	478	5,266	40	247	2,753	75	0	0
1999	1,509	46,702	1,370	310	9,531	9	193	8,522	146	0	0
2000	4,521	63,760	4,237	312	5,709	64	2,420	18,556	502	0	0
2001	4,381	117,388	4,115	47	12,369	10	4,763	126,752	523	0	0
2002	1,513	80,870	2,074	263	19,152	26	100	6,081	52	0	0
2003	1,207	85,305	2,315	69	16,247	0	763	53,151	526	0	0
2004	751	66,897	1,170	64	15,982	0	156	14,966	47	0	0
2005	318	53,930	935	23	9,258	6	85	6,757	36	0	0
2006	458	38,791	1,457	6	1,701	0	8	3,679	0	0	0
2007 ^{c/}	867	34,404	793	39	3,737	0	381	7,878	97	0	0
TOTAL AREA 4B ADD-ON^{d/}											
1989-1990	1,084	10,941	-	62	375	-	2,095	18,021	-	36	212
1991-1995	343	5,481	-	9	122	-	580	7,351	-	58	776
1996	36	1,511	-	-	5	-	61	2,266	-	-	-
1997	136	1,788	-	-	4	-	65	1,429	-	139	412
1998	71	6,296	-	5	98	-	125	7,937	-	-	3
1999 ^{e/}	-	-	-	-	-	-	-	-	-	-	-
2000	373	3,046	-	-	8	-	614	3,796	-	-	-
2001 ^{f/}	-	-	-	-	-	-	-	-	-	-	-
2002 ^{f/}	-	-	-	-	-	-	-	-	-	-	-
2003 ^{f/}	-	-	-	-	-	-	-	-	-	-	-
2004 ^{f/}	-	-	-	-	-	-	-	-	-	-	-
2005 ^{f/}	-	-	-	-	-	-	-	-	-	-	-
2006 ^{e/}	-	-	-	-	-	-	-	-	-	-	-
2007 ^{f/}	-	-	-	-	-	-	-	-	-	-	-

a/ Starting in 2000, includes catch upstream from the Astoria-Megler Bridge to the new boundary line from Tongue Point, Oregon to Rocky Point, Washington.

b/ Prior to 1987, data on charter and private anglers were combined. Total Buoy 10 catch and effort data prior to 1987 are provided in Table B-21.

c/ Preliminary.

d/ There was no Area 4B add-on fishery prior to 1989.

e/ There was no Area 4B add-on fishery opening because the Area 4 ocean quota was not attained.

f/ There was no Area 4B add-on fishery planned.

TABLE IV-16. Estimates of California coastal community and state personal income impacts in thousands of real (2007) dollars of the troll and recreational ocean salmon fishery for major port areas.^{a/}

Year or Avg.	Crescent City	Eureka	Fort Bragg	San Francisco	Monterey	Coastal Community Total ^{b/}	State Total
OCEAN TROLL^{c/}							
1976-1980	6,333	16,086	15,774	20,693	8,881	67,768	87,123
1981-1985	3,208	3,871	9,059	17,101	5,827	39,066	48,639
1986-1990	1,208	2,991	15,913	30,899	11,554	62,566	76,785
1991-1995	10	142	1,000	11,636	6,629	19,417	23,399
1996-2000	11	169	708	12,195	7,393	20,475	21,663
2001	14	288	949	9,978	2,111	13,340	13,846
2002	251	480	3,421	14,231	3,833	22,216	23,600
2003	202	35	13,886	14,469	2,282	30,875	34,338
2004	1,778	393	6,801	21,367	4,809	35,148	35,887
2005	133	400	4,957	12,344	6,479	24,312	24,920
2006	0	0	2,258	5,839	887	8,984	9,277
2007 ^{d/}	304	764	3,054	7,383	1,506	13,011	13,242
RECREATIONAL							
1976-1980	1,231	1,427	831	12,494	837	16,821	18,868
1981-1985	1,349	1,390	666	11,065	884	15,353	17,281
1986-1990	2,285	2,381	1,161	13,522	3,634	22,983	26,785
1991-1995	829	892	1,347	11,438	5,478	19,984	23,463
1996-2000	384	707	1,376	11,467	5,037	18,971	22,071
2001	329	715	1,931	6,963	2,802	12,740	13,706
2002	147	796	2,041	8,747	4,309	16,040	17,224
2003	83	599	1,542	6,327	2,082	10,633	11,389
2004	125	1,004	1,999	10,246	4,037	17,412	18,621
2005	95	635	1,617	7,726	2,933	13,006	13,937
2006	56	627	1,332	5,229	1,765	9,011	9,708
2007 ^{d/}	79	819	1,072	3,677	1,288	6,934	7,532

a/ Per pound and per day estimates of income impacts provided from output of the Fishery Economic Assessment Model (FEAM). These are the income impacts associated with expenditures in the troll or recreational sectors. There is no differentiation between money new to the area and money which would otherwise have been expended in other sectors. It is assumed that all fish landed at a port is processed in the port area. Values through 1995 are based on a 1992 run of the FEAM using 1989 U.S. Forest Service IMPLAN data. Values from 1996 through 2000 are based on a 1998 run of the FEAM using 1996 U.S. Forest Service IMPLAN data. Beginning in 2001 values are based on a 2003 run of the FEAM using 1998 U.S. Forest Service IMPLAN data.

b/ Total personal income impacts on coastal areas. Totals do not include impacts of one coastal area on another.

c/ Excluding pink salmon.

d/ Preliminary.

TABLE IV-17. Estimates of Oregon coastal community and state personal income impacts in thousands of real (2007) dollars of the troll and recreational ocean salmon fishery for major port areas.^{a/}

Year or Avg.	Astoria	Tillamook	New port	Coos Bay	Brookings	Coastal Community Total ^{b/}	State Total
OCEAN TROLL^{c/}							
1976-1980	4,066	5,233	12,276	18,892	7,854	48,321	65,515
1981-1985	1,317	1,695	3,975	7,010	3,043	17,040	23,157
1986-1990	609	3,551	7,904	15,236	2,887	30,187	40,769
1991-1995	85	663	2,715	1,319	134	4,916	6,628
1996-2000	141	278	2,875	1,660	400	5,355	6,526
2001	354	723	5,410	2,842	584	9,912	12,065
2002	1,011	856	4,623	4,087	739	11,316	13,705
2003	989	896	5,977	5,434	640	13,936	16,862
2004	833	666	5,897	6,416	1,374	15,186	16,412
2005	690	1,149	4,911	4,865	1,152	12,767	13,796
2006	902	561	1,474	397	346	3,680	3,948
2007 ^{d/}	266	377	614	1,790	712	3,761	4,037
RECREATIONAL							
1979	3,415	1,090	5,193	5,258	2,531	17,489	22,548
1980	4,124	1,812	5,734	5,511	2,460	19,640	25,295
1981-1985	2,013	1,623	3,877	3,954	2,751	14,219	18,459
1986-1990	1,378	1,724	5,365	3,908	2,864	15,240	19,841
1991-1995	936	754	1,706	1,523	1,075	5,994	7,773
1996-2000	362	416	409	452	868	2,506	3,305
2001	1,301	700	1,653	1,386	967	6,008	7,363
2002	759	994	1,304	1,519	712	5,288	6,509
2003	1,107	1,150	2,607	1,899	558	7,321	9,006
2004	994	1,250	2,408	1,794	691	7,137	8,789
2005	721	516	818	1,115	461	3,631	4,450
2006	518	607	643	798	392	2,957	3,634
2007 ^{d/}	727	820	1,246	998	402	4,192	5,153

a/ Per pound and per day estimates of income impacts provided by the FEAM. These are the income impacts associated with expenditures in the troll or recreational sectors. There is no differentiation between money new to the area and money which would otherwise have been expended in other sectors. It is assumed that all fish landed at a port is processed in the port area. Values through 1995 are based on a 1992 run of the FEAM using 1989 U.S. Forest Service IMPLAN data. Values from 1996 through 2000 are based on a 1998 run of the FEAM using 1996 U.S. Forest Service IMPLAN data. Beginning in 2001 values are based on a 2003 run of the FEAM using 1998 U.S. Forest Service IMPLAN data.

b/ Total personal income impacts on coastal areas. Totals do not include impacts of one coastal area on another.

c/ Excluding pink salmon.

d/ Preliminary.

TABLE IV-18. Estimates of Washington coastal community and state personal income impacts in thousands of real (2007) dollars of the troll and recreational ocean salmon fishery for major port areas.^{a/}

Year or Avg.	Neah Bay	La Push	Westport	Ilwaco ^{b/}	Coastal Community Total ^{c/d/}	Puget Sound	State Total
OCEAN TROLL^{e/f/}							
1976-1980	5,871	8,016	15,892	5,691	35,470	7,901	56,586
1981-1985	1,154	467	4,356	1,042	7,020	1,686	11,034
1986-1990	639	168	2,004	436	3,248	978	5,321
1991-1995 ^{g/}	471	104	670	48	1,295	189	1,906
1996-2000	159	3	191	19	372	98	511
2001	290	0	603	40	934	0	1,010
2002	598	78	1,048	175	1,899	0	2,093
2003	1,085	183	895	131	2,294	41	2,660
2004	798	252	992	97	2,139	25	2,472
2005	654	391	1,006	124	2,175	1	2,458
2006	486	394	378	254	1,512	33	1,790
2007	215	218	892	111	1,435	19	1,596
RECREATIONAL							
1976-1980	2,168	1,075	21,561	10,554	35,358	-	47,509
1981-1985	1,311	134	8,483	4,360	14,288	-	19,223
1986-1990	1,006	115	4,814	2,595	8,530	-	11,457
1991-1995	534	105	2,971	1,507	5,117	-	6,846
1996-2000	283	77	1,391	681	2,432	-	3,245
2001	732	149	5,441	3,447	9,769	-	11,412
2002	622	159	5,012	2,744	8,537	-	9,974
2003	905	253	5,645	3,656	10,459	-	12,236
2004	1,061	225	4,605	3,018	8,908	-	10,444
2005	727	227	4,203	2,444	7,601	-	8,901
2006	477	200	3,103	1,900	5,680	-	6,648
2007	486	155	3,184	2,483	6,309	-	7,376

a/ Per pound and per recreational day estimates of income impacts provided by the FEAM. These are the income impacts associated with expenditures in the troll or recreational sectors. There is no differentiation between money new to the area and money which would otherwise have been expended in other sectors. It is assumed that all fish landed at a port is processed in the port area. Values through 1995 are based on a 1992 run of the FEAM using 1989 U.S. Forest Service IMPLAN data. Values from 1996 through 2000 are based on a 1998 run of the FEAM using 1996 U.S. Forest Service IMPLAN data. Beginning in 2001 values are based on a 2003 run of the FEAM using 1998 U.S. Forest Service IMPLAN data.

b/ Recreational values exclude recreational shorebased effort from the Columbia River north jetty.

c/ Total personal income impacts on coastal areas. Totals do not include impacts of one coastal area on another.

d/ Through 1993, commercial values include a very small amount of fish landed in Washington coastal areas not included in the major port groups.

e/ Excluding pink salmon.

f/ All commercial values in this table are based on preliminary information available at the start of each year's Salmon

g/ The non-Indian commercial and recreational fisheries were closed north of Cape Falcon in 1994. Some commercial catch taken south of Cape Falcon was landed in the Puget Sound area.

TABLE IV-19. Local personal income impacts in real (2007) dollars of the inriver commercial salmon fishery on Oregon and Washington Columbia River communities.^{a/}

Fishery	Species	1987-2002	2003	2004	2005	2006	2007 ^{b/}
OREGON							
Non-Indian ^{c/}	Chinook						
Gillnet	Spring	946	849	2,058	618	1,119	1,270
	Fall Brights	2,563	1,342	1,365	991	1,286	706
	Tules	254	202	291	173	84	-
	Coho	1,784	2,685	1,656	1,812	1,215	489
	Chum	1	-	1	d/	d/	d/
	TOTAL	5,547	5,077	5,369	3,594	3,703	2,466
Treaty Indian ^{e/}	Chinook						
All Gears	Spring	12	11	343	-	1	116
	Fall Brights	1,118	44	1,401	523	697	679
	Tules	80	-	337	80	14	-
	Coho	11	-	52	1	29	29
	TOTAL	1,221	55	2,133	603	740	824
WASHINGTON^{b/f/}							
Non-Indian	Chinook						
Gillnet	Spring	434	162	540	430	603	160
	Fall ^{g/}	1,079	938	1,084	768	869	436
	Coho	794	1,453	848	419	531	396
	Chum	2	d/	d/	d/	-	d/
	TOTAL	2,309	2,553	2,473	1,617	2,004	993
Treaty Indian ^{e/}	Chinook						
All Gears ^{h/}	Spring	105	397	401	260	869	1
	Fall ^{g/}	2,134	2,300	1,593	2,622	2,876	2,496
	Coho	35	28	58	47	75	124
	TOTAL	2,274	2,725	2,052	2,929	3,820	2,620
GRAND TOTAL							
Non-Indian		7,857	7,630	7,842	5,211	5,707	3,459
Treaty Indian		3,495	2,780	4,185	3,532	4,560	3,444
Columbia River		11,351	10,410	12,027	8,743	10,267	6,903

a/ Excluding pink, sockeye, and steelhead. Values through 1995 are based on a 1992 run of the FEAM using 1989 U.S. Forest Service IMPLAN data. Values from 1996 through 2000 are based on a 1998 run of the FEAM using 1996 U.S. Forest Service IMPLAN data. Beginning in 2001 values are based on a 2003 run of the FEAM using 1998 U.S. Forest Service IMPLAN data.

b/ Preliminary. (All Washington values in this table are based on preliminary information available when each year's Salmon Review is drafted.)

c/ Mainstem below Bonneville and Select Areas (Youngs Bay, Tongue Point, Blind Slough, and Deep River).

d/ Less than \$500.

e/ Treaty Indian values do not include direct sales to consumers.

f/ Washington income impacts for years prior to 2000 are based on a combination of Washington and Oregon value information.

g/ Includes fall brights, tules, and jacks.

h/ Primarily mainstem Columbia set gillnet but also includes Klickitat dipnet, Drano Lake (Little White Salmon River mouth), and Priest Rapids Pool fisheries.

TABLE IV-20. Local personal income impacts in real (2007) dollars of the Buoy 10 recreational fishery in Oregon and Washington and the Area 4B add-on fishery in Washington. (Page 1 of 1)

Year	Total Angler Trips (thousands)	Income Impacts (thousands of dollars)		
		Oregon	Washington	Total
BUOY 10 (including bank fishing)				
1987-1990	136	2,547	4,441	6,988
1991-1995	79	1,449	2,465	3,913
1996-2000	45	928	1,270	2,198
2001	126	2,397	2,531	4,928
2002	84	1,613	1,516	3,129
2003	89	1,911	1,323	3,233
2004	69	1,281	1,214	2,494
2005	55	1,280	706	1,986
2006	41	957	547	1,504
2007 ^{b/}	36	793	594	1,387
AREA 4B ADD-ON ^{c/}				
1989-1990	12	-	629	629
1991-1995	6	-	293	293
1996-2000	3	-	131	131
2001	-	-	-	-
2002	-	-	-	-
2003	-	-	-	-
2004	-	-	-	-
2005	-	-	-	-
2006	-	-	-	-
2007	-	-	-	-

a/ Values through 1995 are based on a 1992 run of the FEAM using 1989 U.S. Forest Service IMPLAN data. Values from 1996 through 2000 are based on a 1998 run of the FEAM using 1996 U.S. Forest Service IMPLAN data. Beginning in 2001 values are based on a 2003 run of the FEAM using 1998 U.S. Forest Service IMPLAN data.

b/ Preliminary

c/ There were no Area 4B add-on fisheries prior to 1989.

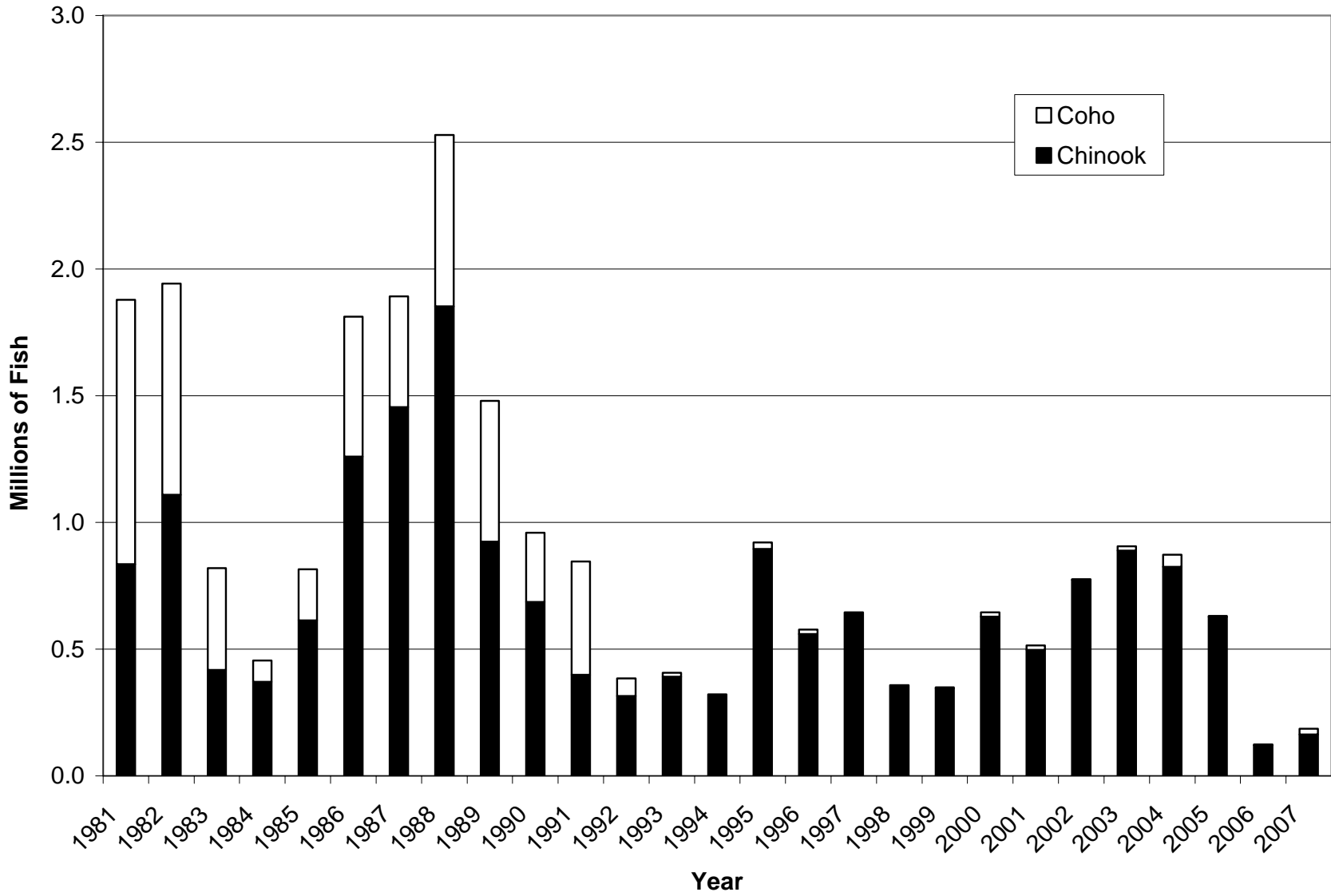


Figure IV-1. West Coast ocean non-Indian commercial Chinook and coho harvest.

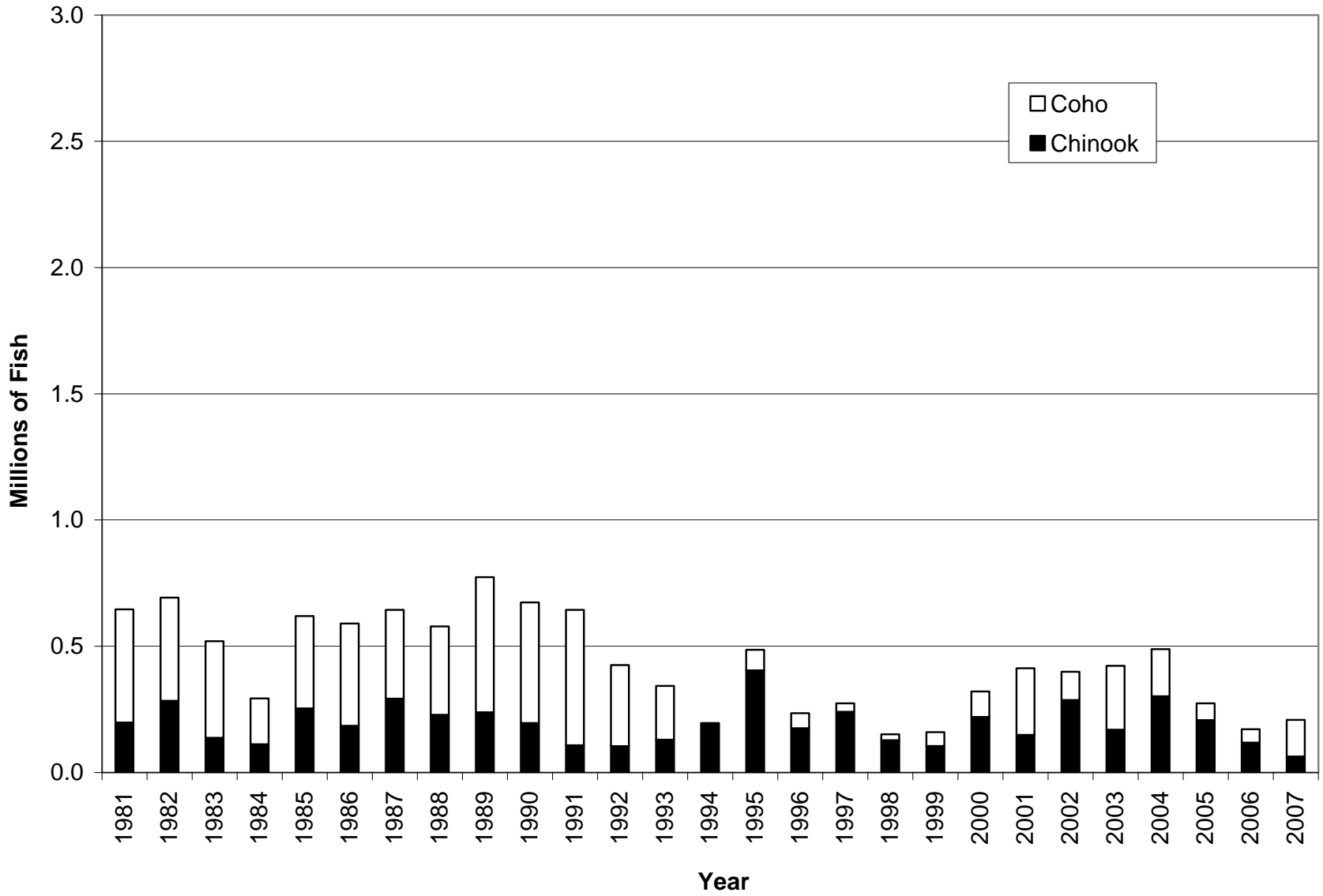


Figure IV-2. West Coast ocean recreational Chinook and coho harvest.

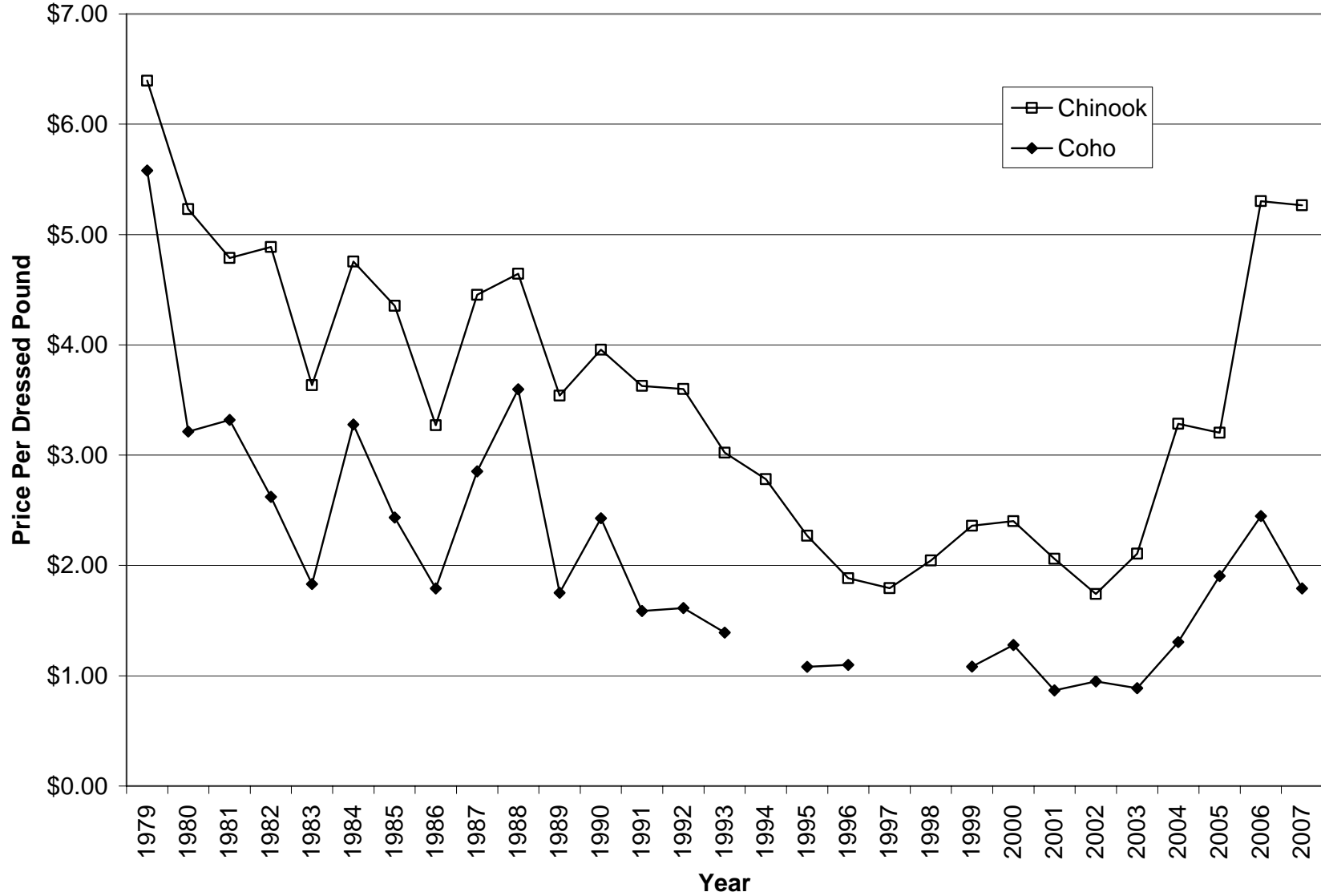


Figure IV-3. West Coast non-Indian ocean commercial salmon annual exvessel prices (2007 dollars).

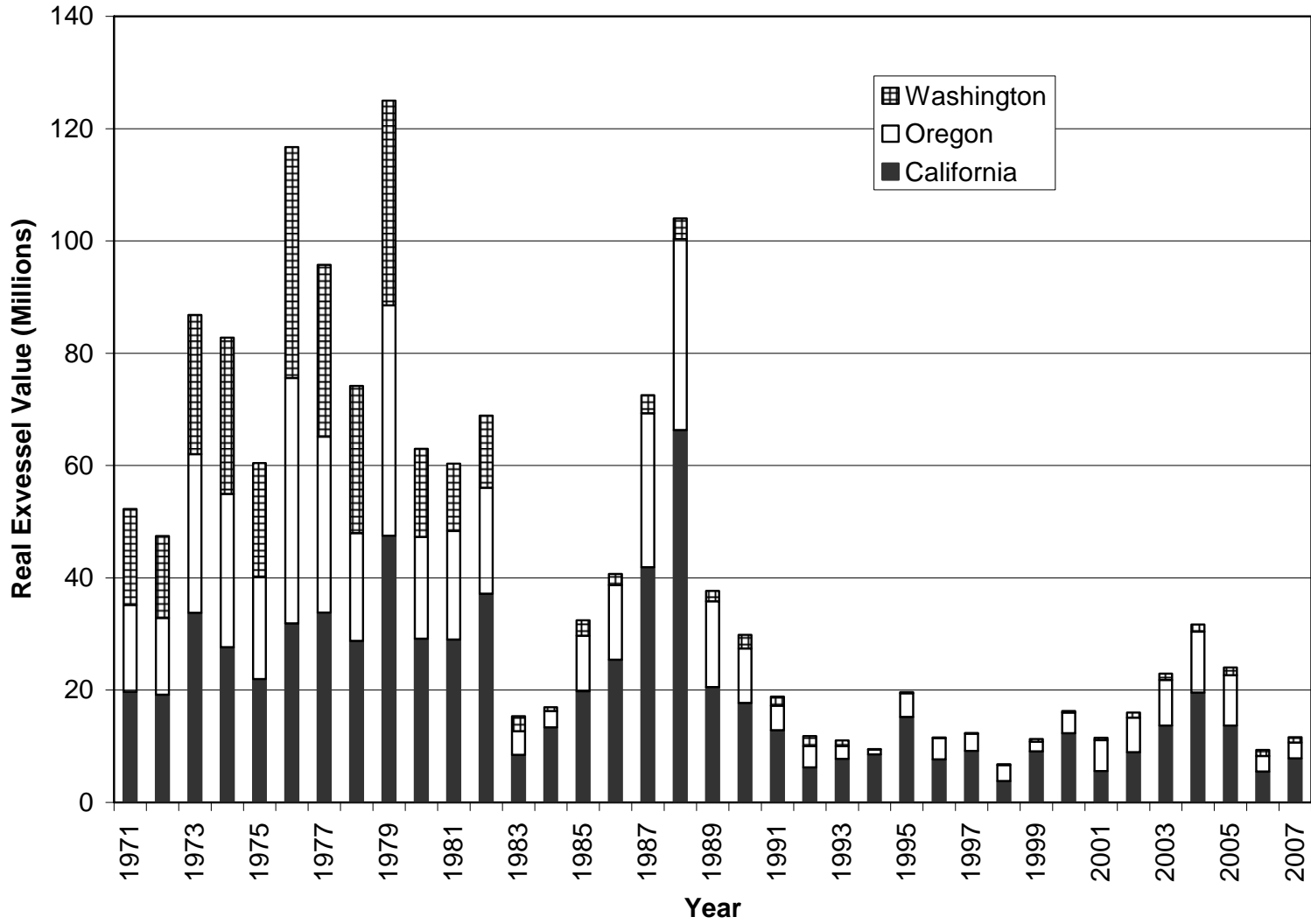


Figure IV-4. Exvessel value of West Coast non-Indian ocean commercial Chinook and coho landings by state of landing (2007 dollars).

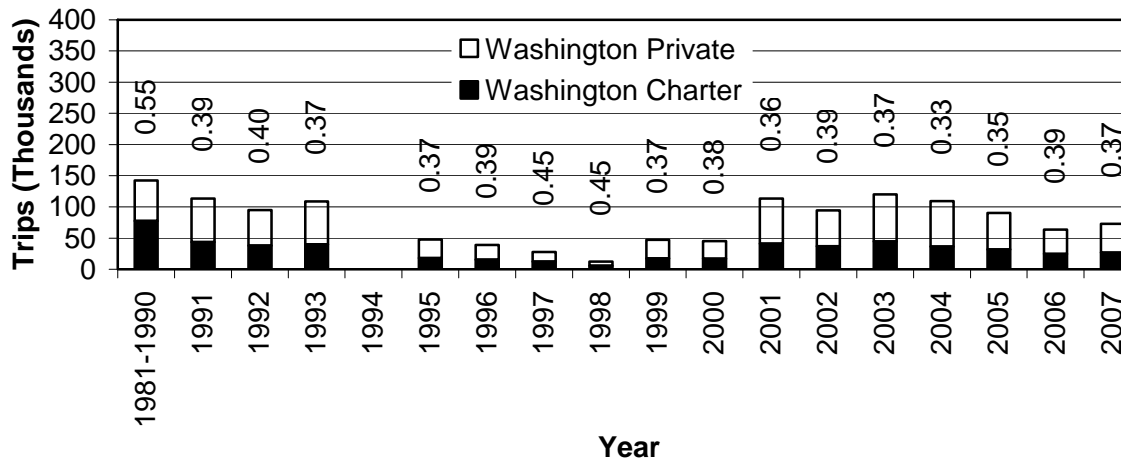
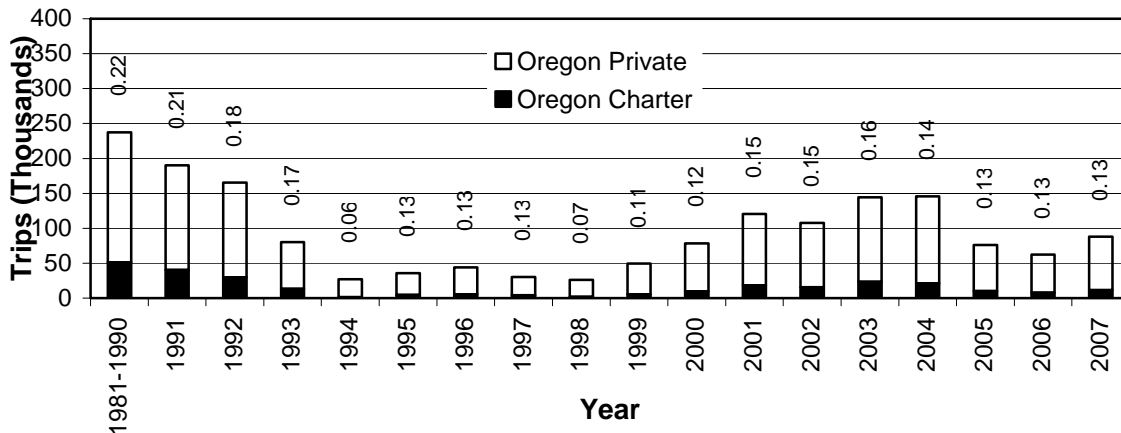
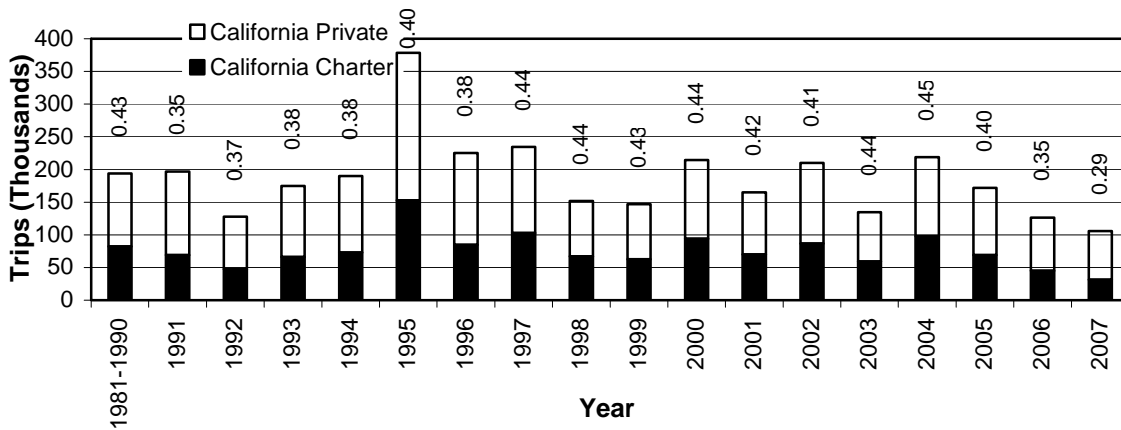


Figure IV-5. Total recreational ocean salmon trips for California, Oregon, and Washington, with proportion of charter trips shown above each bar.

Page Left Intentionally Blank