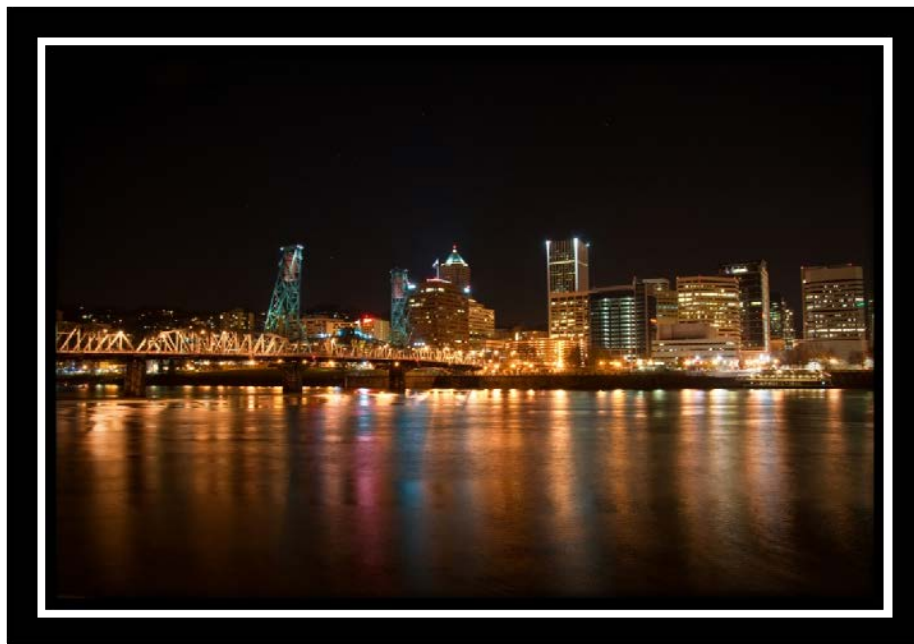


PACIFIC FISHERY MANAGEMENT COUNCIL

CHAIR'S RECEPTION



Saturday, March 5, 2011

6:00 p.m.

Second Floor Foyer

Hilton Hotel

Vancouver, Washington

TO BE RETAINED BY OPERATORS OF HOTELS
MOTELS, AND SIMILAR ACCOMMODATIONS AS
EVIDENCE OF EXEMPT OCCUPANCY

EXEMPTION CERTIFICATE
TAX ON OCCUPANCY
OF HOTEL ROOMS

Imposed Pursuant to
Articles 28 and 29 of the Tax Law

NAME OF HOTEL, APARTMENT HOTEL, OR LODGING HOUSE	DATES
Hilton Vancouver Hotel	March 3-10, 2011
301 West Sixth Street, Vancouver, WA 98660	

ADDRESS

This is to certify that the above individuals are representatives of the United States Governmental department, agency or instrumentality indicated below; that the charges for the occupancy at the above establishment on the dates set forth below have been or will be paid for by such governmental unit; and that such charges are incurred in the performance of official duties as representatives or employees of such governmental unit.

DATES OF
OCCUPANCY

Group Name: Pacific Fishery
Management Council

Dates: March 3-10, 2011

SIGNATURE

GOVERNMENTAL
UNIT

DOC/NOAA/NMFS/
Pacific Fishery Management Council

TITLE



The Pacific Fishery Management Council is a federal instrumentality operating under authority of the United States Department of Commerce, National Oceanic and Atmospheric Administration.





Pacific Council Meeting Schedule 2011-2013

2011	
DATES	LOCATION
March 5-10, 2011 Advisory Bodies may begin Thu, March 3 Council Session begins Sat, March 5	Hilton Vancouver Washington 301 W. 6th Street – Vancouver, WA 98660 Phone: 360-993-4500
April 9-14, 2011 Advisory Bodies may begin Thu, April 7 Council Session begins Sat, April 9	San Mateo Marriott 1770 South Amphlett Boulevard San Mateo, CA 94402 Phone: 650-653-6000
June 8-13, 2011 Advisory Bodies may begin Tue, June 7 Council Session begins Wed, June 8	Doubletree Hotel Spokane City Center 322 N Spokane Falls Ct – Spokane, WA 99201 Phone: 509-455-9600
September 14-19, 2011 Advisory Bodies may begin Tue, Sept 13 Council Session begins Wed, Sept 14	San Mateo Marriott 1770 South Amphlett Boulevard San Mateo, CA 94402 Phone: 650-653-6000
November 2-7, 2011 Advisory Bodies may begin Tue, Nov 1 Council Session begins Wed, Nov 2	Hilton Orange County/Costa Mesa 3050 Bristol Street – Costa Mesa, CA 92626 Phone: 714-540-7000

2012	
DATES	LOCATION
March 2-7, 2012 Advisory Bodies may begin Thu, March 1 Council Session begins Fri, March 2	DoubleTree Hotel Sacramento 2001 Point West Way - Sacramento, CA 95815 Phone: 916-929-8855
April 1-6, 2012 Advisory Bodies may begin Sat, March 31 Council Session begins Sun, April 1	Sheraton Seattle Hotel 1400 Sixth Avenue, Seattle WA 98101 Phone: 206-447-5534
June 20-25, 2012 Revised Meeting Dates Advisory Bodies may begin Tue, June 19 Council Session begins Wed, June 20	San Mateo Marriott 1770 South Amphlett Boulevard San Mateo, CA 94402 Phone: 650-653-6000
September 12-17, 2012 Advisory Bodies may begin Tue, Sept 11 Council Session begins Wed, Sept 12	Doubletree Hotel Boise Riverside 2900 Chinden Blvd - Boise, ID 83714 Phone: 208-343-1871
October 31-November 5, 2012 Advisory Bodies may begin Tue, Oct 30 Council Session begins Wed, Oct 31	Hilton Orange County/Costa Mesa 3050 Bristol Street - Costa Mesa, CA 92626 Phone: 714-540-7000

2013


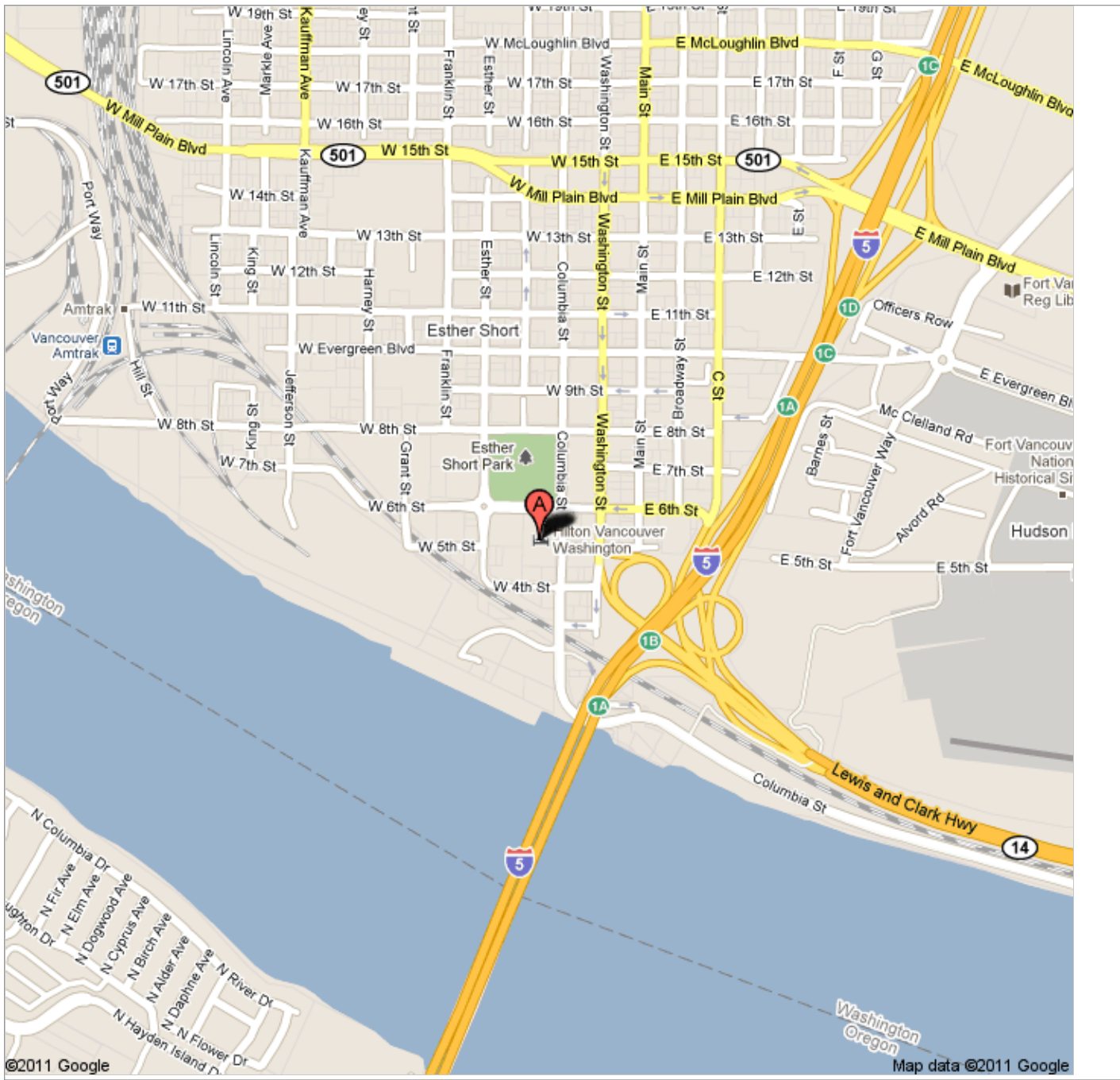
DATES	LOCATION
March 6-11, 2013 Advisory Bodies may begin Tue, March 5 Council Session begins Wed, March 6	Washington, Oregon
April 6-11, 2013 Advisory Bodies may begin Fri, Apr 5 Council Session begins Sat, April 6	California
June 5-10, 2013 Advisory Bodies may begin Tue, June 4 Council Session begins Wed, June 5	California
September 11-16, 2013 Advisory Bodies may begin Tue, Sept 10 Council Session begins Wed, Sept 11	Doubletree Hotel Boise Riverside 2900 Chinden Blvd - Boise, ID 83714 Phone: 208-343-1871
October 30-November 4, 2013 Advisory Bodies may begin Tue, Oct 29 Council Session begins Wed, Oct 30	Oregon, Washington

1/5/2011 4:37 PM



Address **301 W 6th St**
Vancouver, WA 98660

Get Google Maps on your phone
Text the word "GMAPS" to 466453



Search by keyword:



Print



Close

Hilton Vancouver Washington

301 W. 6th Street, Vancouver, Washington, United States 98660
Tel: 1-360-993-4500 Fax: 1-360-993-4484
eMail Us

This hotel is 100% non-smoking.

Directions and Transportation

Directions to our Hotel

Traveling South on Interstate 5:
Take Interstate 5 into Vancouver, Washington.

Take the City Center exit (#1C).

Turn right onto Mill Plain Blvd. (becomes 15th street).

Turn left onto Columbia street.

Hotel is on the SW corner of 6th and Columbia. Please register in the hotel lobby to retrieve a key for the parking garage.

Traveling North on Interstate 5:

Take Interstate 5 through Portland and over the Interstate Bridge into Washington.

Take the second exit (#1B) after the bridge, following the City Center signs.

Turn left, following the signs to 6th Street.

Hotel is on the SW corner of 6th and Columbia. Please register in the hotel lobby to retrieve a key for the parking garage.

From Portland International Airport:

Leaving the airport, follow the signs to Interstate 205 North.

Get on I-205 North, and go over the Glen Jackson bridge into Washington.

Take the first exit onto Highway 14 West, towards Vancouver.

Stay on Hwy. 14 for approx. 7 miles.

Follow the signs into City Center (center lane).

Turn left, following the signs to 6th Street.

Hotel is on the SW corner of 6th and Columbia. Please register in the hotel lobby to retrieve a key for the parking garage.

Event and Meeting Parking:

Is available at the "Park and Go" lot located at the N.E. corner of 6th and Columbia.
Overnight guests of the hotel have access to the garage located beneath the hotel after

registration.

Local Airports

■ Portland International Airport

- **Distance from hotel:** 12 mi.
- **Drive time:** 20 min.

Directions: I-205 North over Glen Jackson bridge into Washington, the first exit onto Hwy. 14 W., towards Vancouver, stay on Hwy. 14 approx. 7 mi., follow signs into City Ctr, go left, follow signs to 6th St., hotel corner of 6th and Columbia.

Get turn by turn directions.

Transportation to and from the Airport

Type	Typical Minimum Charge
Super Shuttle	15.00 USD
Rental Car	40.00 USD
Taxi	30.00 USD

■ Pearson Field Airport

- **Distance from hotel:** 2 mi.
- **Drive time:** 5 min.

Directions: Turn left out of the parking lot onto 5th street. Turn right on Fort Vancouver Way. Turn right on Evergreen Blvd. Turn left on Broadway. Turn right on 6th street. Hotel is on the corner of 6th and Columbian.

Get turn by turn directions.

Local Map



Note: The map and directions are informational only. Please verify specific routes. The map and directions shown are provided as a guide for your convenience.

Hotel Parking

Self Parking:	13.00 USD Parking key required
Valet Parking:	17.00 USD Upon Request
In/Out Privileges:	Available
Secured:	Available
Covered:	Available
Parking Information:	Parking key required, issued upon registration

[Hilton Hotels](#) > [Hilton Vancouver Washington](#) > [Maps & Directions](#)

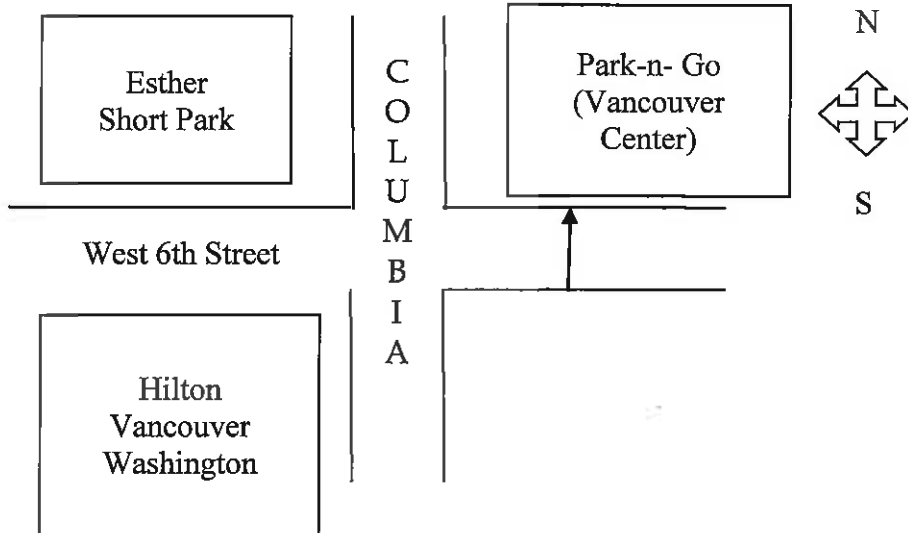
PARKING

OVERNIGHT HOTEL GUESTS

Parking is located in our underground garage at Columbia between 5th and 6th on the east side of the hotel. Please check into hotel first, for garage access key. Parking rates will vary.

DAY GUESTS

Vancouver Center Building "Park & Go" garage located at 6th Street between Columbia and Washington Streets.



Vancouver center Parking Garage Operation and Rate Schedule:

Hours of Operation:

Monday - Thursday	6am to 10pm
Friday - Saturday	6am to midnight
Sunday	8am to 10pm

Payment Pay Stations accept Cash or Credit Cards

[click here for more information](#)

STREET PARKING

Metered parking is available on the blocks surrounding the hotel. Maximum time limits range from 1 hour to 10 hours, depending on the location. Evenings and Sundays are free.

RESTAURANTS WITHIN ONE MILE OF HOTEL

Breakfast / Coffee:

Joe Brown's Fountain Lunch

817 Main St
Vancouver, WA 98660
(360) 693-6375

Starbucks

(360) 699-0684
304 W 8th St
Vancouver, WA

Sandwiches:

Chicago Sub Shop

(360) 690-0075
115 W 7th St
Vancouver, WA

Subway

(360) 695-2894
406 W 8th St
Vancouver, WA

Quiznos

(360) 699-1204
545 W 8th St
Vancouver, WA

City Sandwich Co

(360) 750-6758
111 E 8th St
Vancouver, WA

Acorn Deli

(360) 696-8550
210 W Evergreen Blvd # 700
Vancouver, WA

Thai Cuisine:

Tigers Garden

(360) 693-9585
312 W 8th St
Vancouver, WA

Thai Orchid Restaurant

(360) 695-7786
1004 Washington St
Vancouver, WA

Mexican Cuisine:

(360) 737-0322
800 Main St
Vancouver, WA

Who-Song & Larry's Mexican

(360) 695-1198
111 SE Columbia Way
Vancouver, WA

El Presidente Mexican Restaurant

(360) 750-7475
312 E Evergreen Blvd
Vancouver, WA

Chinese Cuisine:

Hong Kong Inn

(360) 695-1553
108 W 8th St
Vancouver, WA

Oriental Fast Bowl

(360) 737-2730
905 Main St
Vancouver, WA

Bar and Grills:

Chronis' Restaurant & Lounge

(360) 690-0032
819 Main St
Vancouver, WA

Spur's Bar & Grill

(360) 693-8723
109 W 15th St
Vancouver, WA

Hawaiian Cuisine:

Tommy O's Aloha Cafe

(360) 694-5107
801 Washington St
Vancouver, WA

American Cuisine:

Hidden House Restaurant

(360) 695-6198
100 W 13th St
Vancouver, WA

Black Angus Restaurant

(360) 695-1506
415 E 13th St
Vancouver, WA

Burgerville USA

(360) 693-8801
307 E Mill Plain Blvd
Vancouver, WA

Beaches Restaurant & Bar

(360) 694-1521
109 W 17th St
Vancouver, WA

McMenamin's on the Columbia

(360) 699-1521
1801 SE Columbia River Drive
Vancouver, WA

Joe Brown's Fountain Lunch

(360) 693-6375
817 Main St
Vancouver, WA

Joe's Crab Shack

(360) 693-9211
101 SE Columbia Way
Vancouver, WA

Pacific Grill & Chowder House

(360) 750-4940
100 Columbia St
Vancouver, WA

Italian Cuisine:

Little Italy's Trattoria

(360) 737-2363
901 Washington St
Vancouver, WA

AREA SHOPPING

<u>Vancouver Farmers Market</u>	360-737-8293
Esther Street (between 6 th & 8 th) (1/2 block)	
<u>Willows</u>	360-993-1318
8 th & Washington (2 blocks)	
<u>Diego Fashions</u>	360-694-9553
1104 Main Street	
<u>R. Bloom's - Fine Gifts & Accessories</u>	360-737-7929
525 W. 8th Street	
<u>Kazoodles Toy Store</u>	360-699-9200
575 W 8th St Vancouver, WA 98660 - 3006	

NEARBY PRINT SHOPS

.3 miles	<u>PIP Printing</u> 1009 Main Vancouver, WA 98660 - 3150	(360) 699-4466
.7 miles	<u>FedEx Kinko's</u> 303 E 15th Vancouver, WA 98663 - 3403	(360) 694-8584
.8 miles	<u>Omega Printing</u> 1900 Main St Vancouver, WA 98660 - 2635	(360) 696-9222
.8 miles	<u>Printing Expressly For You</u> 1416 Broadway Vancouver, WA 98663 - 3432	(360) 885-2045

DESTINATION MANAGEMENT

<u>Top Hat Productions, Inc</u>	(360) 694-5985	www.tophatproductions.com
<u>Soiree</u>	(503) 230-9311	www.bonsoiree.com
Carole Breck Destination Management	(503) 699-9841	cbreckdm@aol.com
<u>Columbia Crossroads, Inc.-</u>		
<u>Destinations International</u>	(503) 225-9995	www.columbia-crossroads.com
<u>Plans & Action</u>	(503) 259-0739	www.plans-action.com
<u>Beatty Group</u>		
<u>International</u>	(503) 644-3340	www.beattygroup.com

the 1990s, the number of people in the Netherlands who are in need of social services has increased. The number of people with a mental health problem has increased from 1.5 million in 1990 to 2.5 million in 2000 (Mental Health Care Act, 2002).

There are several reasons for this increase. First, the population of the Netherlands is ageing. The number of people aged 65 and over has increased from 1.5 million in 1990 to 2.5 million in 2000 (Mental Health Care Act, 2002). Second, the number of people with a mental health problem has increased from 1.5 million in 1990 to 2.5 million in 2000 (Mental Health Care Act, 2002).

Third, the number of people with a mental health problem has increased from 1.5 million in 1990 to 2.5 million in 2000 (Mental Health Care Act, 2002). Fourth, the number of people with a mental health problem has increased from 1.5 million in 1990 to 2.5 million in 2000 (Mental Health Care Act, 2002).

Fifth, the number of people with a mental health problem has increased from 1.5 million in 1990 to 2.5 million in 2000 (Mental Health Care Act, 2002). Sixth, the number of people with a mental health problem has increased from 1.5 million in 1990 to 2.5 million in 2000 (Mental Health Care Act, 2002).

Seventh, the number of people with a mental health problem has increased from 1.5 million in 1990 to 2.5 million in 2000 (Mental Health Care Act, 2002). Eighth, the number of people with a mental health problem has increased from 1.5 million in 1990 to 2.5 million in 2000 (Mental Health Care Act, 2002).

Ninth, the number of people with a mental health problem has increased from 1.5 million in 1990 to 2.5 million in 2000 (Mental Health Care Act, 2002). Tenth, the number of people with a mental health problem has increased from 1.5 million in 1990 to 2.5 million in 2000 (Mental Health Care Act, 2002).

Eleventh, the number of people with a mental health problem has increased from 1.5 million in 1990 to 2.5 million in 2000 (Mental Health Care Act, 2002). Twelfth, the number of people with a mental health problem has increased from 1.5 million in 1990 to 2.5 million in 2000 (Mental Health Care Act, 2002).

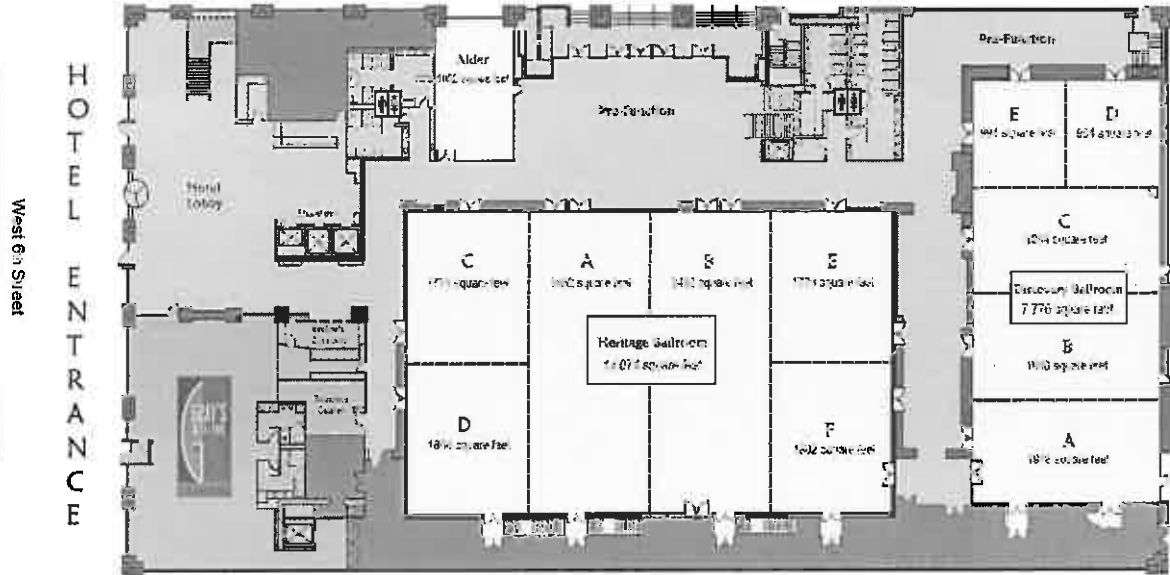
Thirteenth, the number of people with a mental health problem has increased from 1.5 million in 1990 to 2.5 million in 2000 (Mental Health Care Act, 2002). Fourteenth, the number of people with a mental health problem has increased from 1.5 million in 1990 to 2.5 million in 2000 (Mental Health Care Act, 2002).

Fifteenth, the number of people with a mental health problem has increased from 1.5 million in 1990 to 2.5 million in 2000 (Mental Health Care Act, 2002). Sixteenth, the number of people with a mental health problem has increased from 1.5 million in 1990 to 2.5 million in 2000 (Mental Health Care Act, 2002).

MEETING SPACE

Columbia Avenue

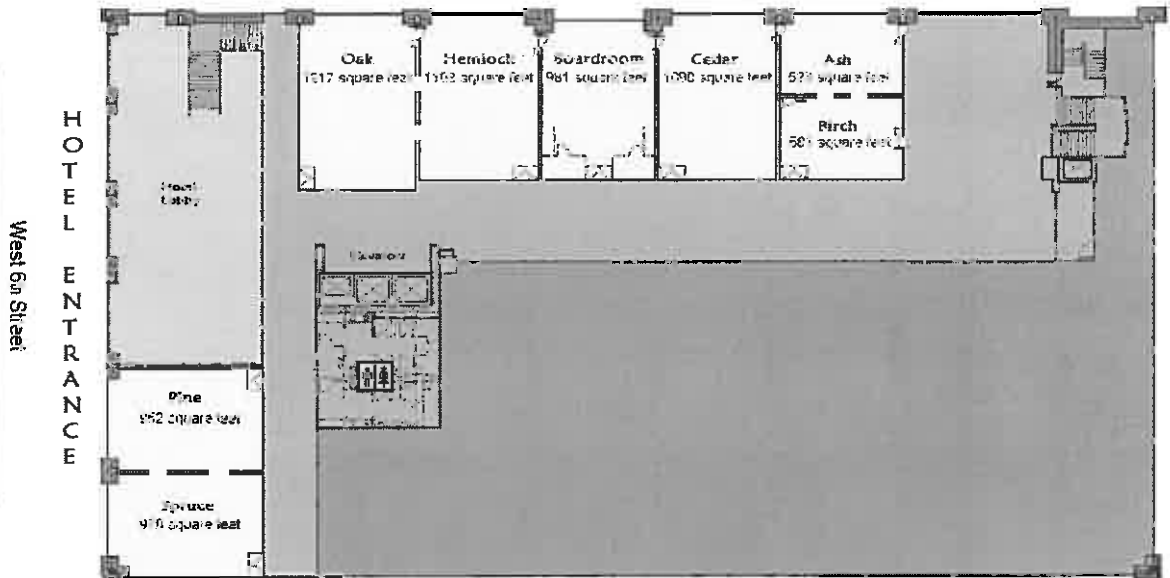
CONVENTION CENTER ENTRANCE



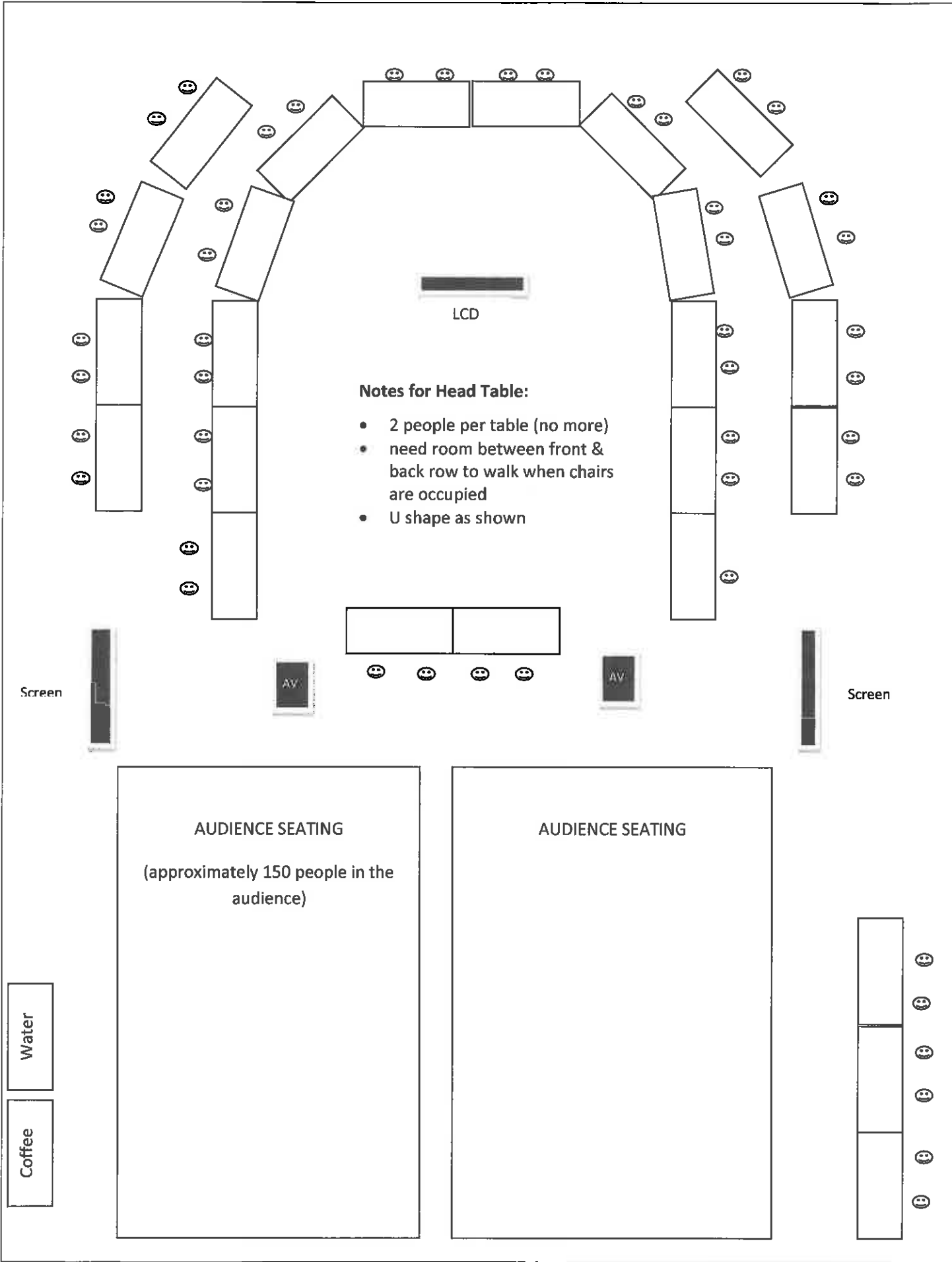
1st Floor Meeting Space

Columbia Avenue

CONVENTION CENTER ENTRANCE



2nd Floor Meeting Space



LCD

Notes for Head Table:

- 2 people per table (no more)
- need room between front & back row to walk when chairs are occupied
- U shape as shown

Screen

Screen

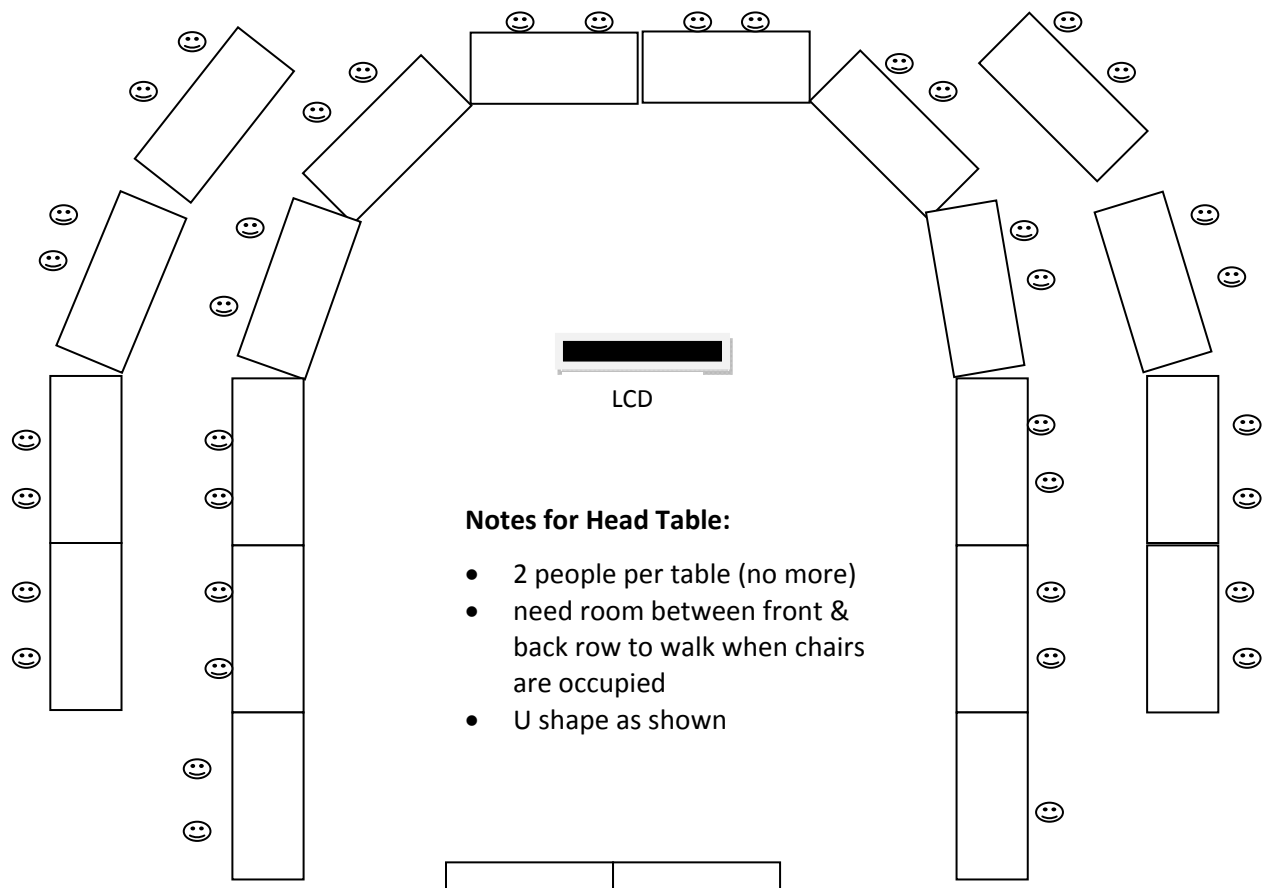
AUDIENCE SEATING

(approximately 150 people in the audience)

AUDIENCE SEATING

Water

Coffee



LCD

Notes for Head Table:

- 2 people per table (no more)
- need room between front & back row to walk when chairs are occupied
- U shape as shown



Smiley face icons representing people seated at the front row table.



AV



AV

Screen

Screen



AUDIENCE SEATING
(approximately 150 people in the audience)

AUDIENCE SEATING

Water

Coffee



Smiley face icons representing people seated at the side row table.