

## WHITING CATCH SHARE ALLOCATIONS: SUPPLEMENTAL ANALYSIS

### Historic Distributions and the 2011 Fishery

The following graphs and tables provide information on the historic distribution of harvest among permits and, for the 2011 fishery, the distribution of harvest and allocations among permits, for the shoreside whiting and mothership fisheries.

In each figure, the permits have been ordered along the horizontal axis from those receiving the least to those receiving the greatest catch share allocations for 2011. The allocations are based on 1994-2003 history, so the 2011 allocations track that history fairly closely for the shoreside fishery (Figure 1) and mothership fishery (Figure 3). However, the shoreside allocations are generally about 23.5% below the landing history because 20% of the allocation went to processors and 3.5% went to nonwhiting permits (not included in the graph) as part of the equal allocation. Other variations are due to the provision which drops the two worst years of history from the calculation of each permit's allocation.

In some cases, the share of each permit's harvest in 2011 varied substantially from 2011 allocations, running either substantially higher or lower (Figure 2 and Figure 4, for the shoreside and mothership fisheries, respectively).

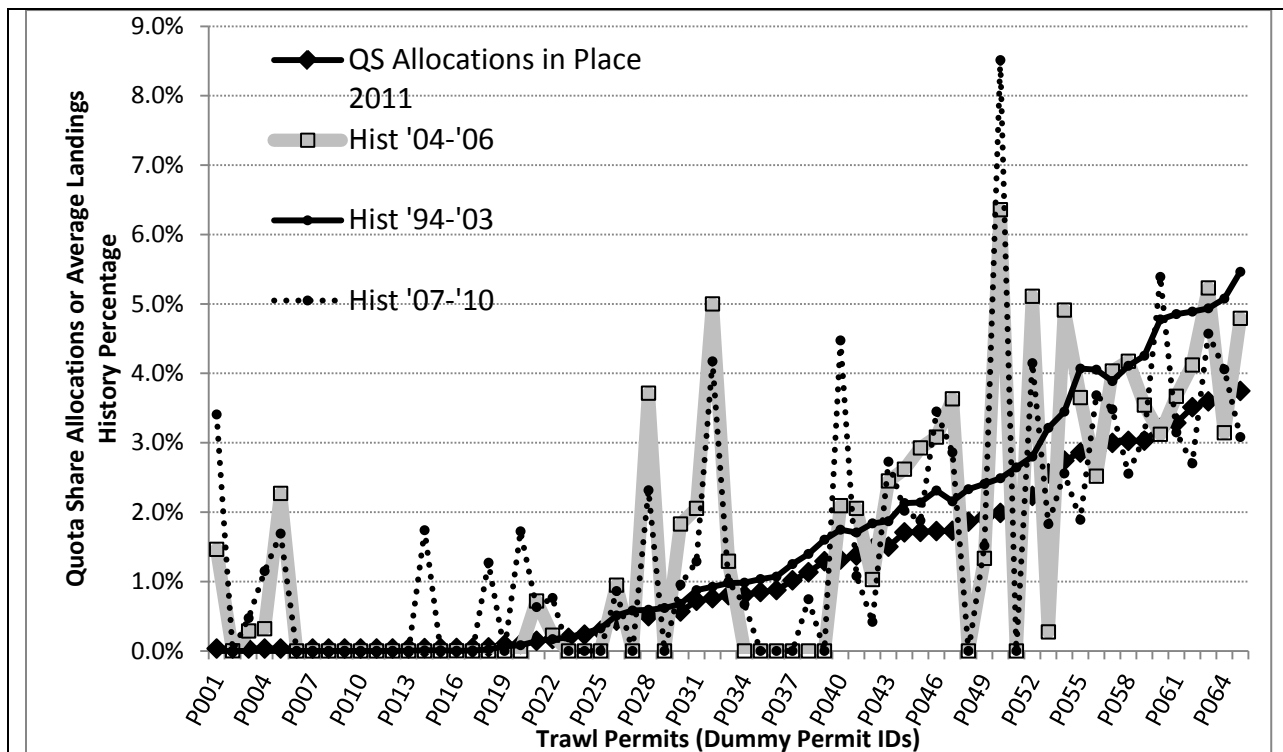


Figure 1. Amounts of shoreside whiting QS permits were allocated in 2011 compared to recent and historic harvests (1994-2003, 2004-2006, 2007-2010).

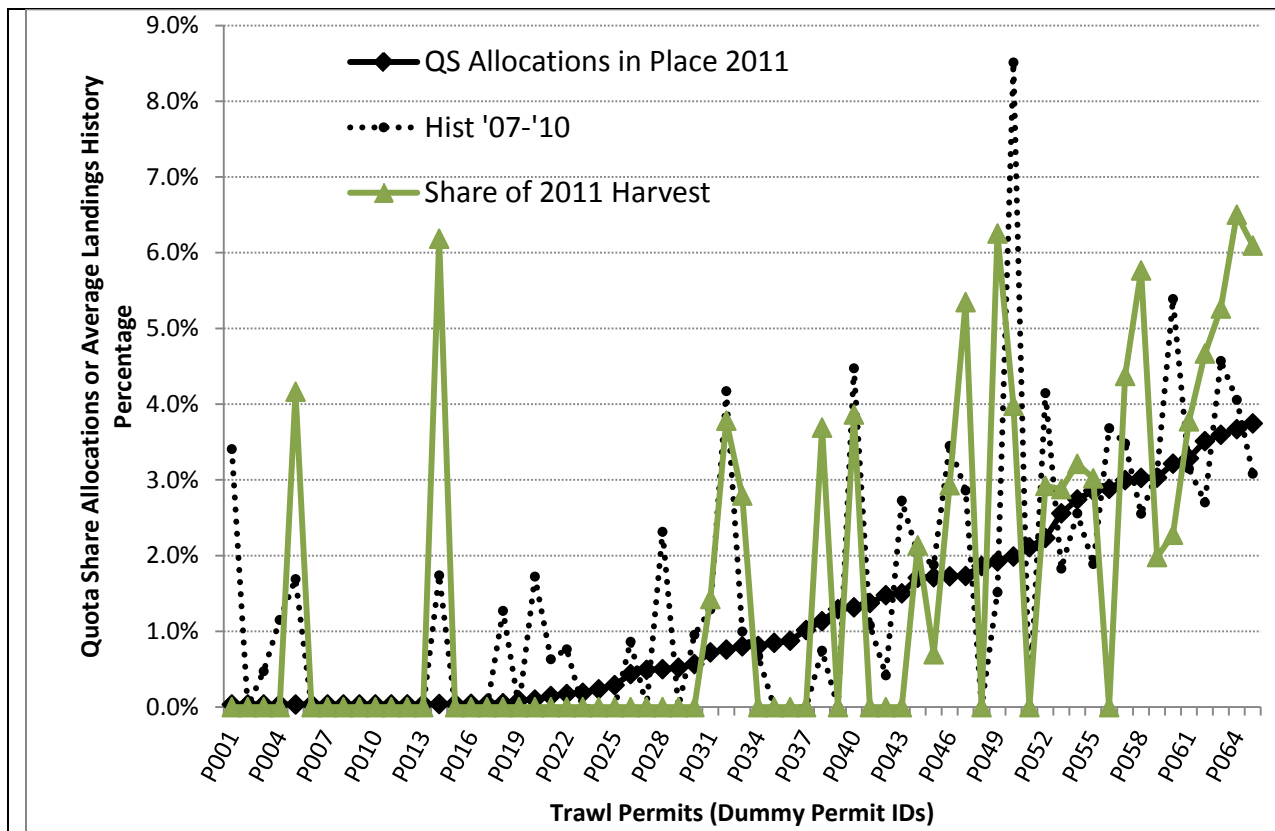


Figure 2. Amounts of shoreside whiting QS permits were allocated in 2011 compared to recent and historic harvests (2007-2010 and 2011).

Data from Figure 2 are summarized in the following table. A total of 39 permits with landings history in the shoreside whiting fishery did not participate in the 2011 fishery. Most permits that were active in 2011 landed substantially more fish than they received in their initial allocation (23 permits). This was partially because 20% of the QS was allocated to processors and the resulting QP were transferred to vessels. Only 3 active permits landed less than their initial allocations.

Table 1. Shoreside permit share of harvest in 2011 compared to permit catch share allocations.

Permits not fishing (received allocations for whiting trips but did not participate in 2011)	39
Shares for those dropping out.	-20.4%
Maximum reduction for those not fishing.	-2.9%
Permits landing less than their allocations.	3
Shares unfished by those permits	-3.0%
Maximum reduction for any one permit	-1.0%
Max reduction as a % of original allocation	-34.5%
Permits landing more than their allocations.	23
Additional shares of harvest by those permits	46.9%
Maximum increase for any one permit	6.1%
Max increase as a % of original allocation	15,000%

Note: the increases relative to allocations (46.9%) are greater than the reductions (23.4%) because the initial allocations to permits with whiting fishery participation was reduced by 20% due to the allocation to processors and by 3.5% due to the amounts equally allocated among all permits (only those permits with whiting directed trips are included in the table and previous figure).

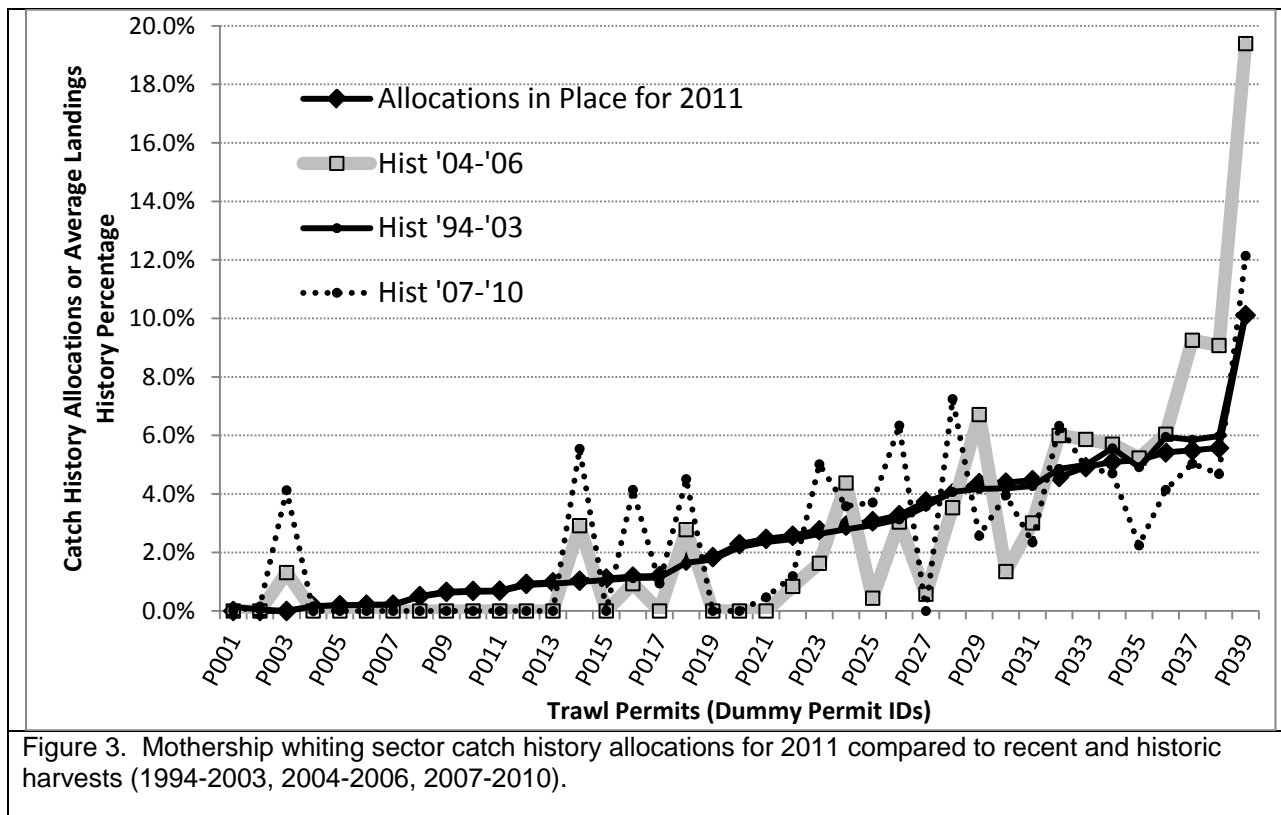
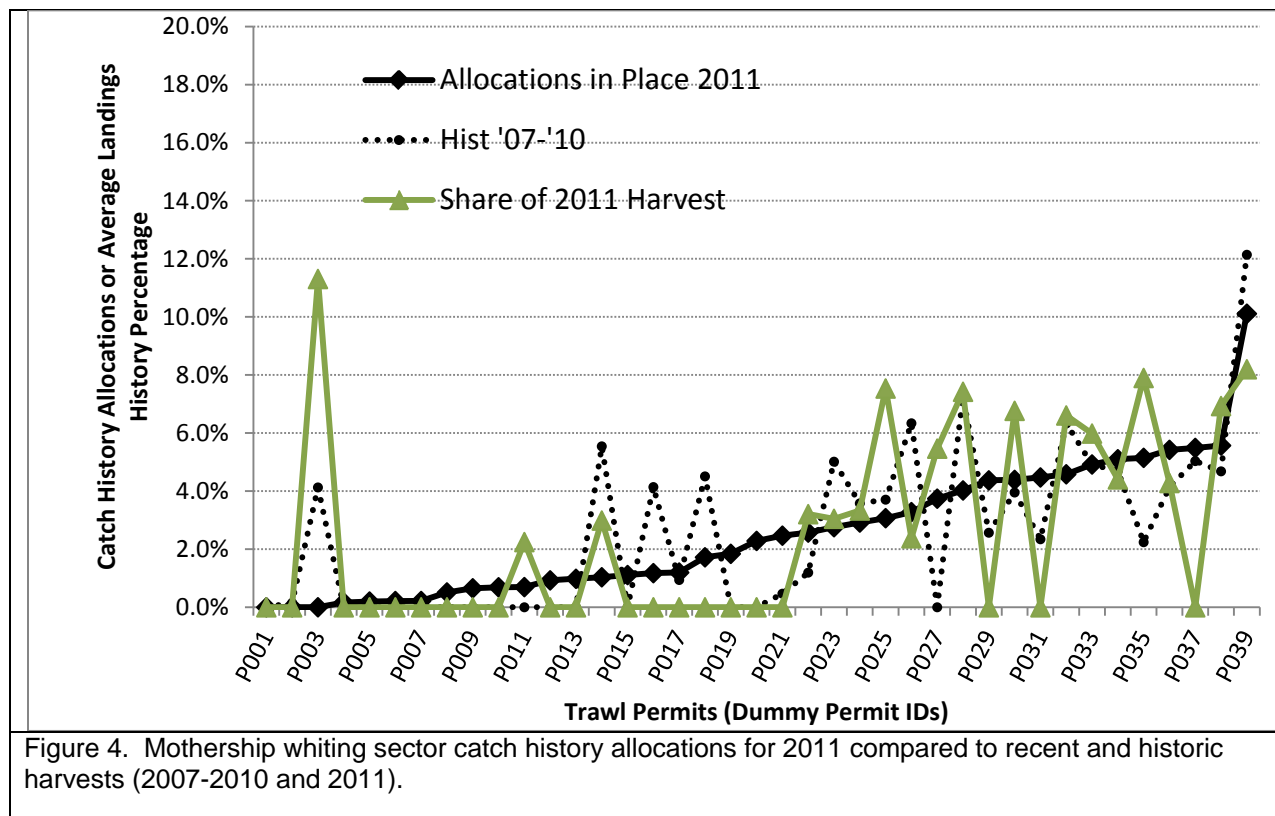


Figure 3. Mothership whiting sector catch history allocations for 2011 compared to recent and historic harvests (1994-2003, 2004-2006, 2007-2010).



Data from Figure 4 are summarized in the following table. A total of 19 permits with delivery histories in the mothership whiting fishery did not participate in the 2011 fishery. Most permits that were active delivered substantially more fish than they received in their initial allocation (14 permits). Only 4 permits remained active and delivered less than their initial allocations.

Table 2. Mothership whiting sector permit share of harvest in 2011 compared to permit catch share allocations.

Permits not fishing (received allocations but did not participate in 2011)	19
Shares for those dropping out.	-30.7%
Maximum reduction for those not fishing.	-5.5%
Permits landing less than their allocations.	4
Shares unfished by those permits	-4.6%
Maximum reduction for any one permit	-1.9%
Max reduction as a % of original allocation	-18.9%
Permits landing more than their allocations.	14
Additional shares fished by those permits	35.3%
Maximum increase for any one permit	11.3%
Max increase as a % of original allocation	Original allocation was zero

## Effects on Allocations by Years of Participation

The following two tables compare the allocations received by permit holders, grouped by the duration of their participation and recent participation. For example the first set of rows in Table 3 show that there were 16 permits with at least 15 years of participation and that the allocations to these permits decreases with each successive option, starting at 43.250% under Alternative 1 and ending at 41.781% under Alternative 4. The most allocated to any single permit declines from 3.746% under Alternative 1 to 3.477% under Alternative 4.

Table 3. Shoreside whiting QS allocations to permits under the reallocation alternatives.

	<b>No Action- Alt</b>	<b>1</b>	<b>Alt 2</b>	<b>Alt 3</b>	<b>Alt 4</b>
<b>Permits with at least 15 yrs participation 1994-2010</b>					
# of permits		16	16	16	16
Amount of QS allocated		43.3%	42.7%	42.5%	41.8%
Max QS allocation		3.7%	3.7%	3.6%	3.5%
<b>Permits with less than 15 yrs participation 1994-2010</b>					
# of permits		49	49	49	49
Amount of QS allocated		33.2%	33.8%	34.0%	34.7%
Max QS allocation		2.7%	2.9%	3.6%	5.3%
<b>Permits with at least 1 yr participation 2000-2010</b>					
# of permits		53	53	53	53
Amount of QS allocated		71.9%	73.2%	73.8%	76.1%
Max QS allocation		3.7%	3.7%	3.6%	5.3%
<b>Permits with no participation 2000-2010</b>					
# of permits		12	12	12	12
Amount of QS allocated		4.6%	3.2%	2.7%	0.4%
Max QS allocation		1.3%	0.9%	0.7%	0.0%
<b>Permits with at least 1 yr participation 2004-2010</b>					
# of permits		44	44	44	44
Amount of QS allocated		66.3%	69.4%	70.6%	75.0%
Max QS allocation		3.7%	3.7%	3.6%	5.3%
<b>Permits with no participation 2004-2010</b>					
# of permits		21	21	21	21
Amount of QS allocated		10.2%	7.1%	5.9%	1.5%
Max QS allocation		2.1%	1.4%	1.2%	0.2%

Table 4. Mothership whiting CV Catch History allocations to permits under the reallocation alternatives

	<b>No Action- Alt 1</b>	<b>Alt 2</b>	<b>Alt 3</b>	<b>Alt 4</b>
<b>Permits with at least 15 yrs participation 1994-2010</b>				
# of permits	8	8	8	8
Amount of QS allocated	45.2%	50.4%	50.1%	54.6%
Max QS allocation	10.1%	12.2%	12.3%	14.4%
<b>Permits with less than 15 yrs participation 1994-2010</b>				
# of permits	28	30	30	19
Amount of QS allocated	54.8%	49.6%	49.9%	45.4%
Max QS allocation	5.1%	4.8%	4.4%	5.9%
<b>Permits with at least 1 yr participation 2000-2010</b>				
# of permits	23	25	25	24
Amount of QS allocated	89.5%	92.8%	94.1%	98.8%
Max QS allocation	10.1%	12.2%	12.3%	14.4%
<b>Permits with no participation 2000-2010</b>				
# of permits	13	13	13	3
Amount of QS allocated	10.5%	7.2%	5.9%	1.2%
Max QS allocation	2.3%	1.6%	1.3%	0.4%
<b>Permits with at least 1 yr participation 2004-2010</b>				
# of permits	26	28	28	27
Amount of QS allocated	94.8%	96.4%	97.1%	100.0%
Max QS allocation	10.1%	12.2%	12.3%	14.4%
<b>Permits with no participation 2004-2010</b>				
# of permits	10	10	10	0
Amount of QS allocated	5.2%	3.6%	2.9%	-
Max QS allocation	1.0%	0.7%	0.5%	-

## Processors

For the figures for processors in the EA (Figures 4-6, 4-7, and 4-8) it is difficult to discern the differences among the alternatives because of the scale of the graphs. The following two figures provide a magnification of the allocational results displayed in the lower and upper range of the graphs. A statistical summary of the graph is provided after the figures.

Please note that the captions to Figures 4-6 and 4-7 of the draft EA incorrectly state the data on deliveries were reduced to 20% to provide a scaled comparison with the 20% of the QS allocated to processors. Deliveries reported in Figures 4-6 and 4-7 have not been scaled.

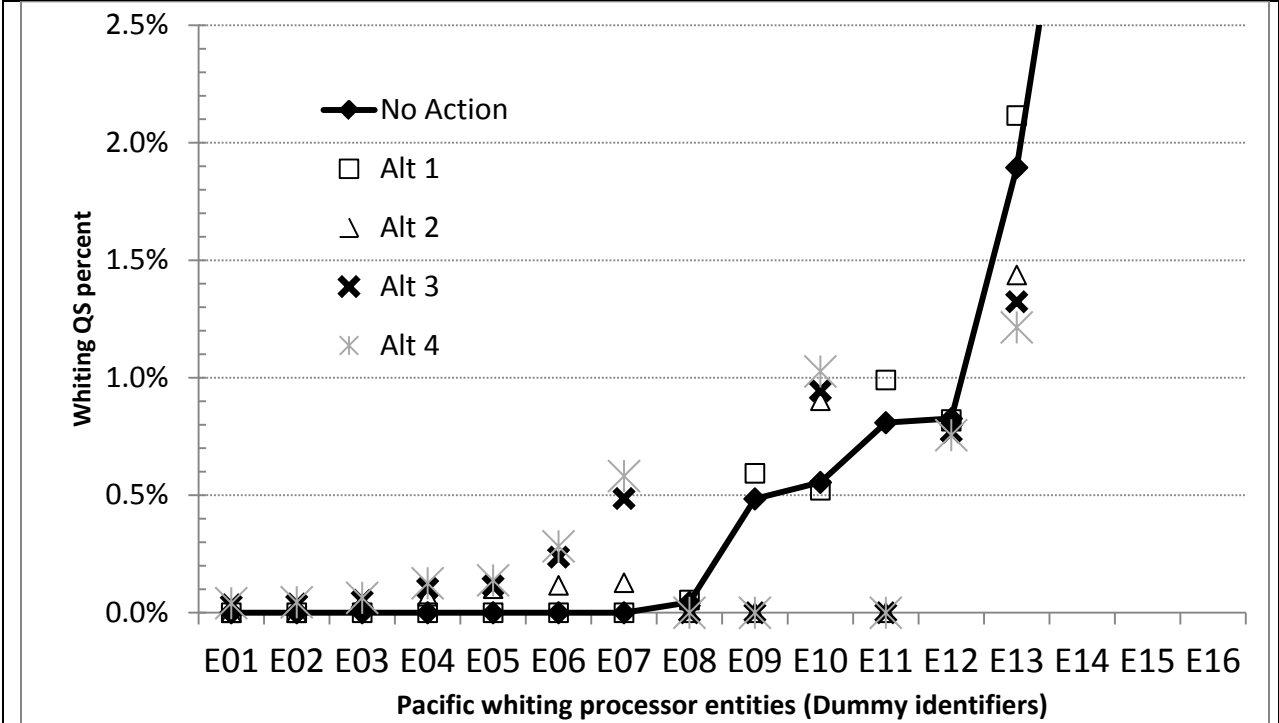


Figure 5. Magnification of the allocational results displayed in the lower end of the Figures 4-6 and 4-7 of the draft EA.

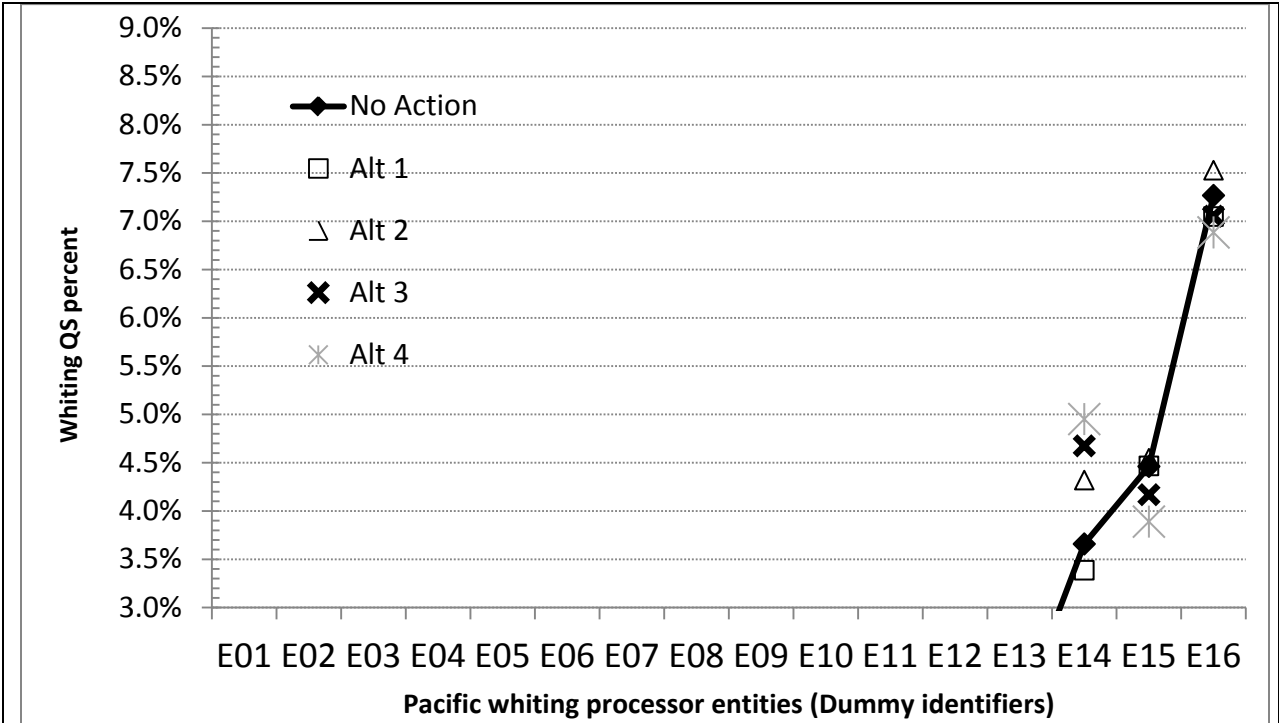


Figure 6. Magnification of the allocational results displayed in the upper end of the Figures 4-6 and 4-7 of the draft EA.

Table 5. Changes in the amount of whiting QS allocated to processors under the alternatives relative to status quo (No Action) based on individual processor history of shoreside sector whiting trips.

	Alt 1: 1998- 2003	Alternatives Alt 2: 1998- 2007	Alt 3: 1998- 2010	Alt 4: 2000- 2010
<b>Number of Processors Not Previously Qualifying</b> for an Allocation	0	5	7	7
Total Allocation Increases for Those Processors	0.0%	0.5%	1.1%	1.3%
Maximum To Any Processor	0.0%	0.1%	0.5%	0.6%
<b>Number of Previously Qualifying Processors With Increased Allocations</b> Under the Alternative	5	4	2	2
Total Percent of Increase for Those Processors	0.5%	1.4%	1.4%	1.8%
Maximum Increases to Any One Processor	0.2%	0.7%	1.0%	1.3%
Max Increase as a Percent of Status Quo Allocation	11.7%	18.1%	27.8%	35.3%
<b>Previously Qualifying Processors with Decreased Allocations</b> Under the Alternative	4	2	4	4
Total Percent of Decreases for Those Processors	-0.5%	-0.5%	-1.1%	-1.7%
Maximum Decreases to Any One Processor	-0.3%	-0.5%	-0.6%	-0.7%
Max Decrease as a Percent of Status Quo Allocation	-7.4%	-24.1%	-30.1%	-35.9%
<b>Previously Qualifying Processors with Zero Allocations</b> Under Status Quo	0	3	3	3
Total Percent of Decreases for Those Processors	-	-1.3%	-1.3%	-1.3%
Maximum Decreases to Any One Processor	-	-0.8%	-0.8%	-0.8%
Max Decrease as a Percent of Status Quo Allocation	-	-100.0%	-100.0%	-100.0%

PFMC  
06/23/12