

Figure 1. Fleet and vessel effort for the drift gillnet fishery. (Source: NMFS SWR).

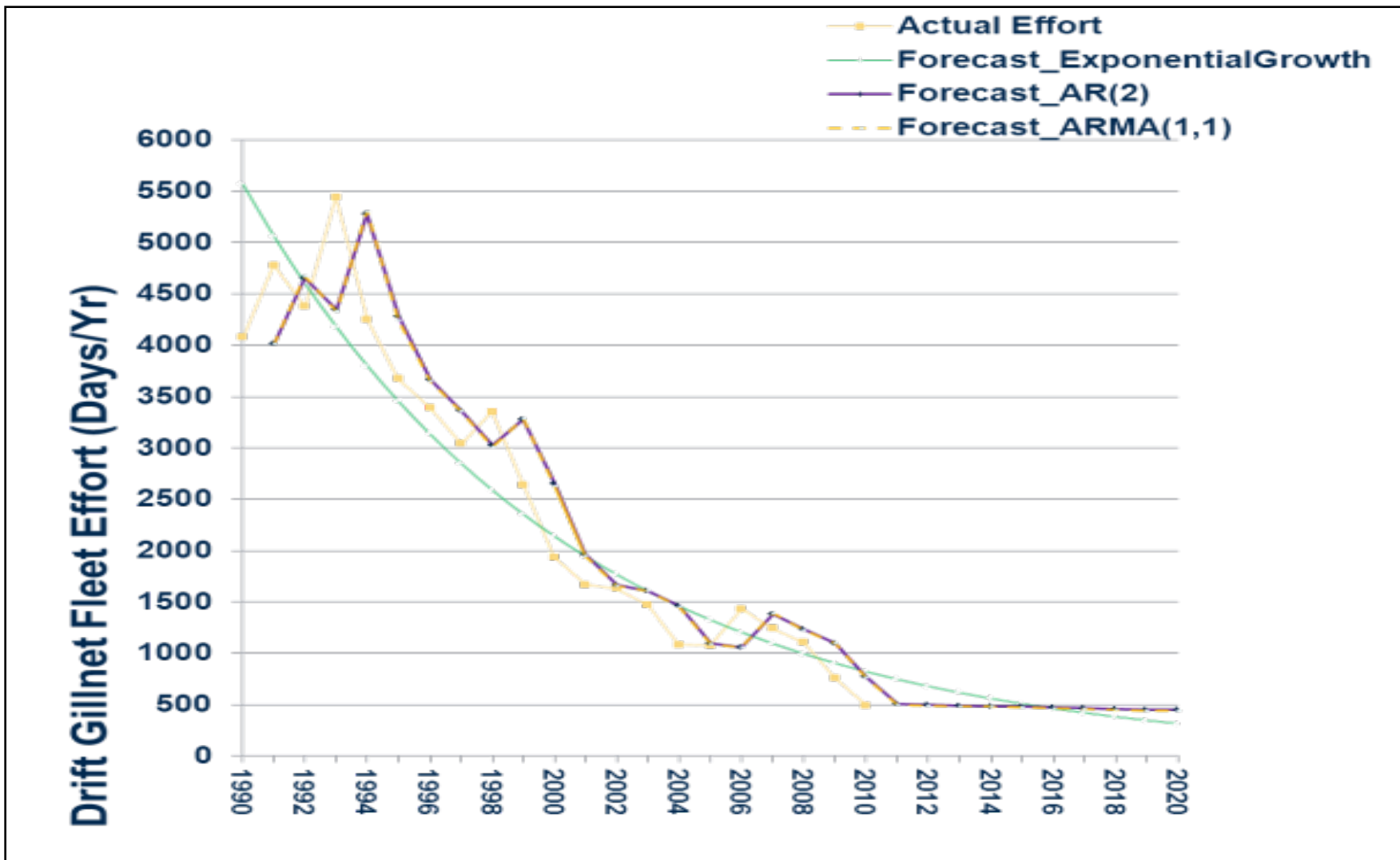


Figure 2. Forecast of change in drift gillnet fishing effort through 2020 (Source: NMFS SWR).

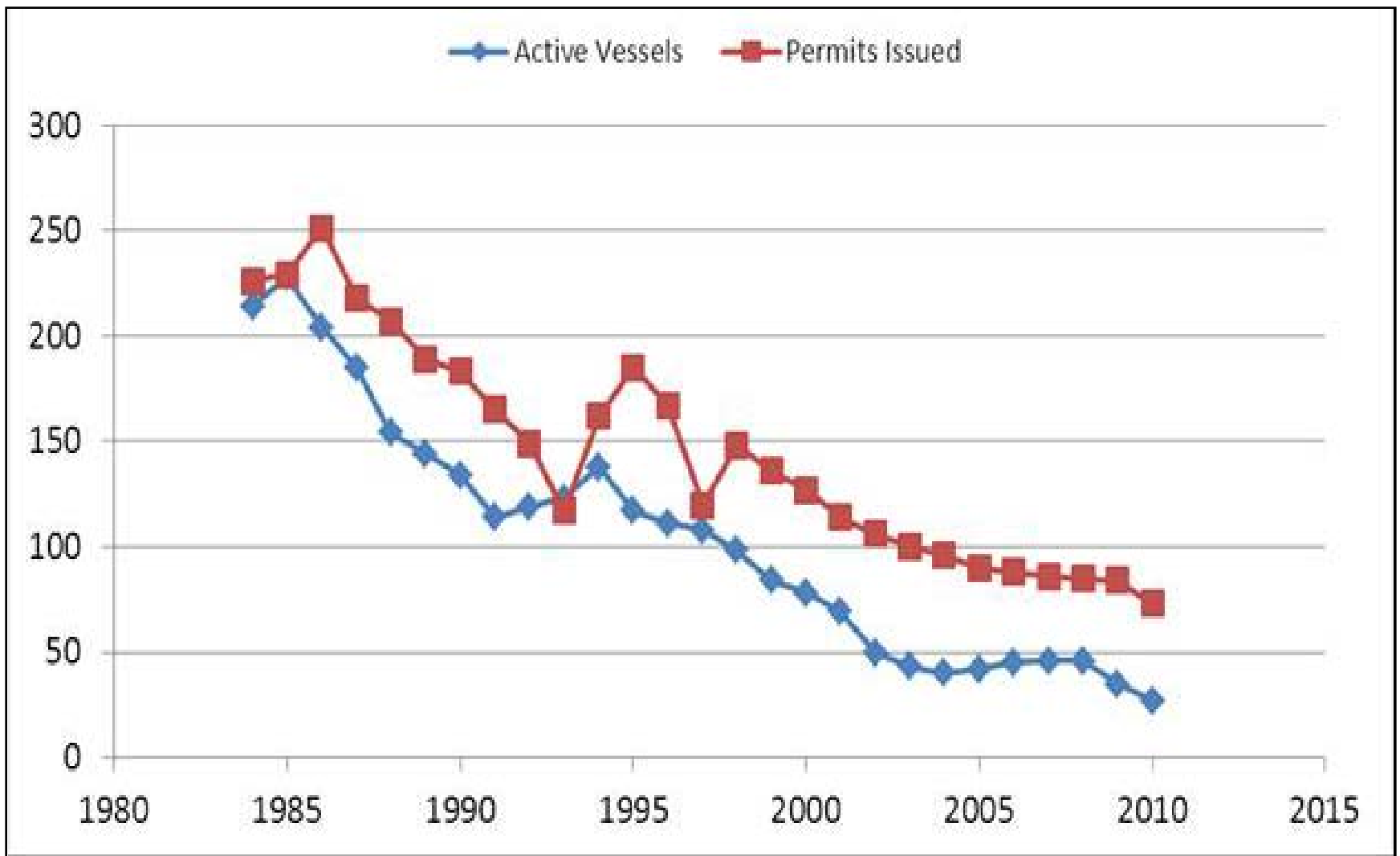


Figure 10. Annual drift gillnet permits and number of active vessels, 1984-2010.

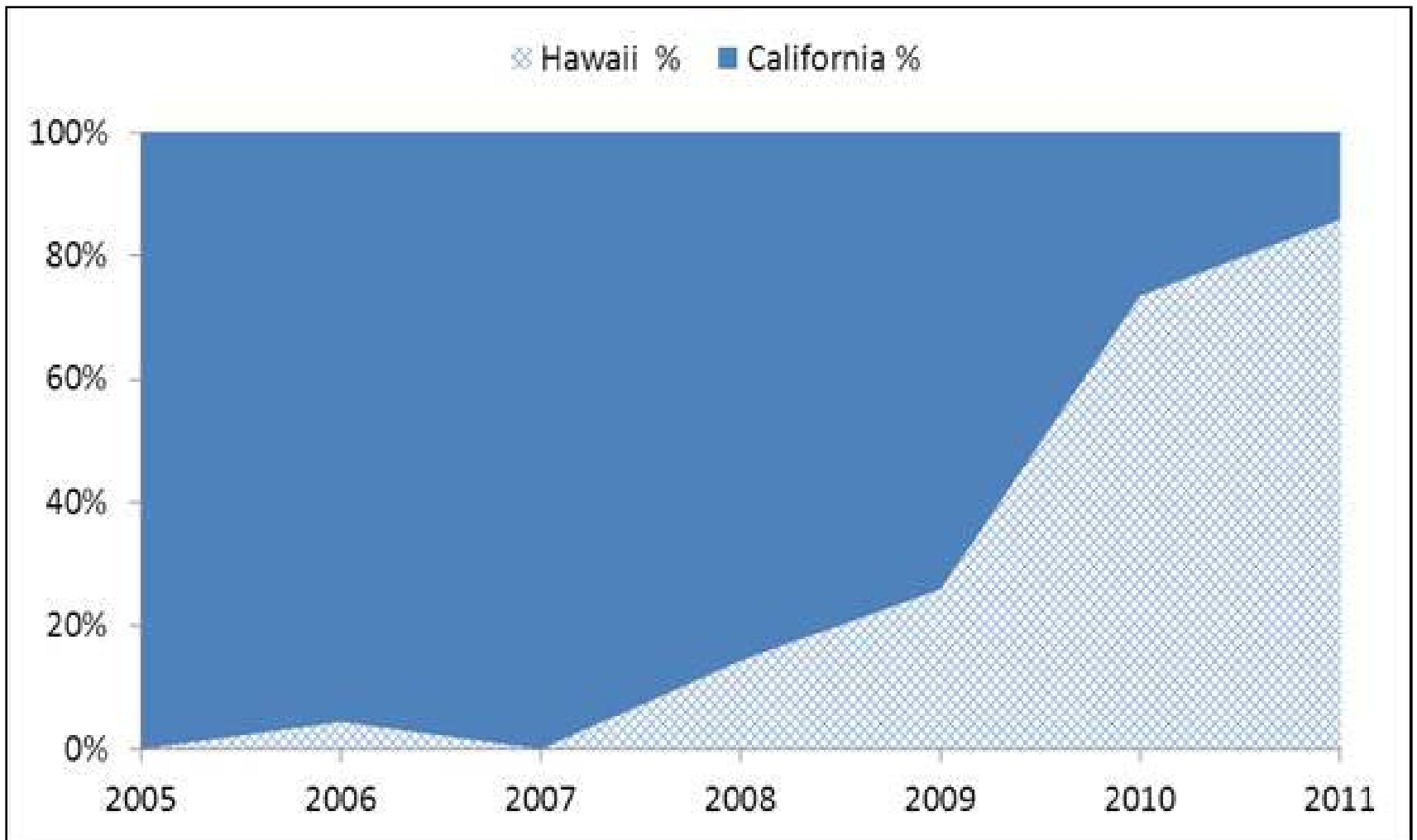


Figure 5. Hawaii and California fishery share of California swordfish landings.

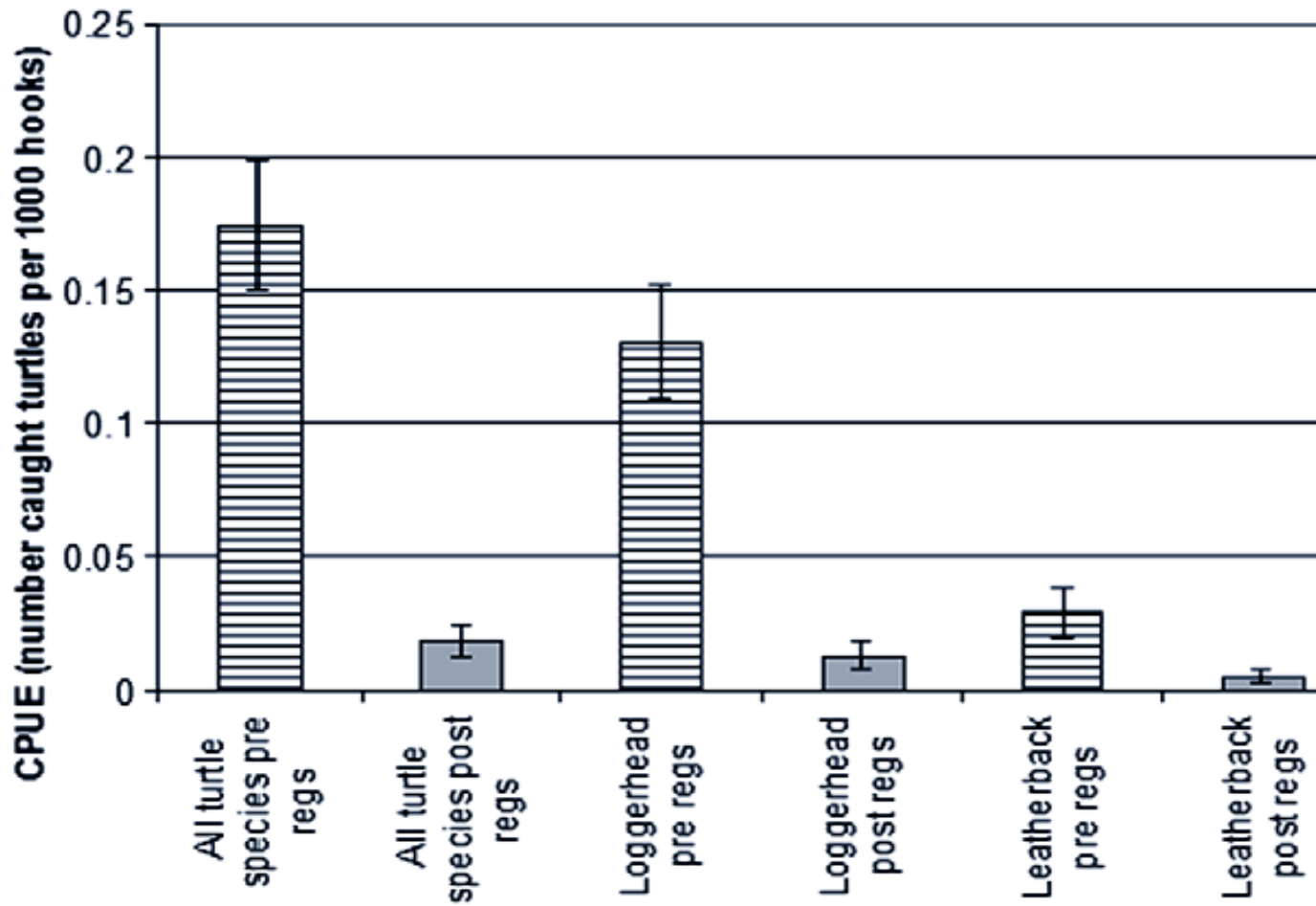
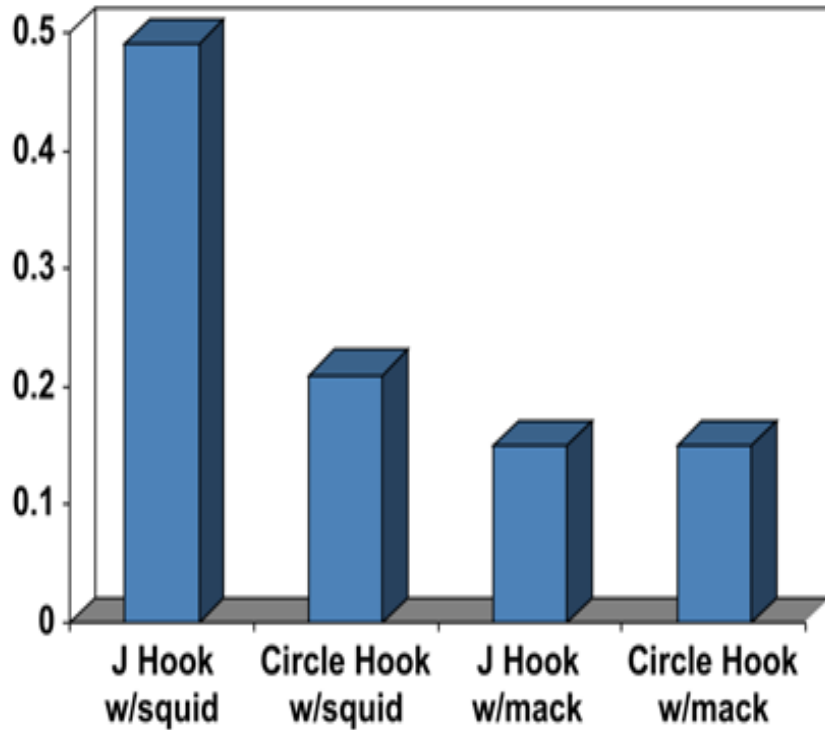


Figure 7. Catch rates of leatherback and loggerhead sea turtles in the Hawaii Shallow Set Longline Swordfish Fishery prior to use of circle hooks and mackerel bait (hatched) and after use of circle hooks and mackerel bait (shaded). (Gilman et al., 2006)

Catch per 1,000 hooks of leatherbacks



Catch per 1,000 hooks of loggerheads

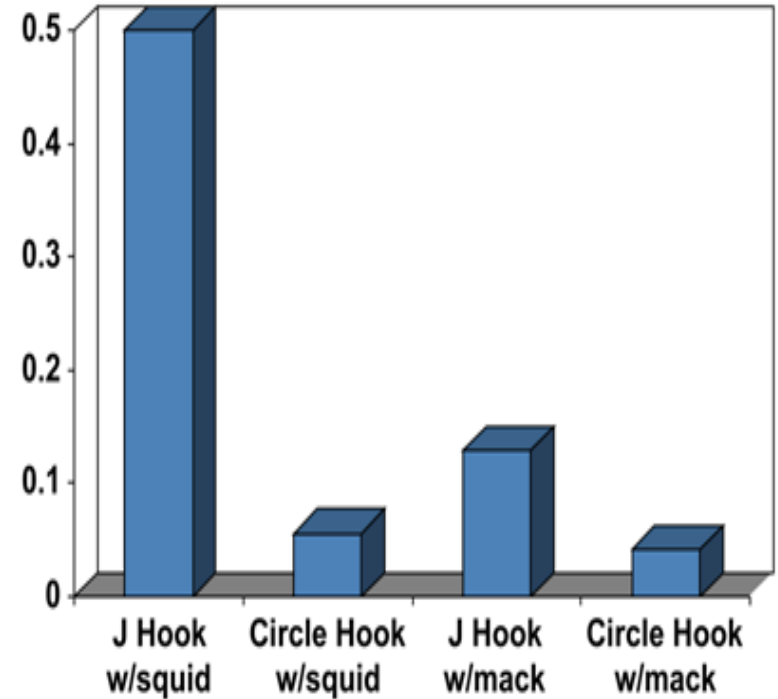


Figure 6. Catch rates of leatherback and loggerhead sea turtles in the U.S. Atlantic Shallow Set Longline Swordfish Fishery with varying hook and bait types. (Watson, et al. 2002).

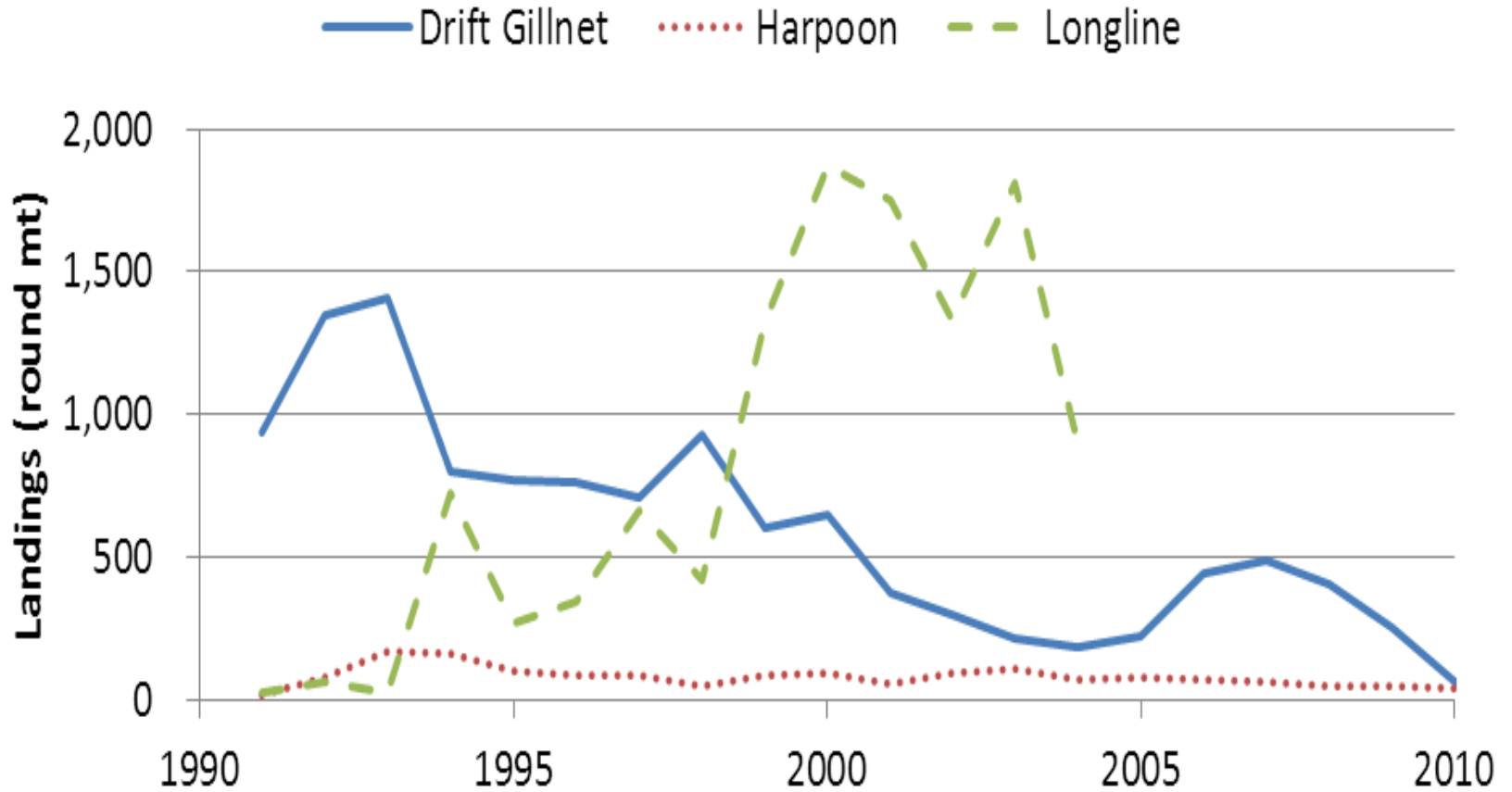


Figure 8. West coast commercial swordfish landing by west coast fisheries, for the years 1991-2010. (Source: Table 4-28, 2010 HMS SAFE Report, September 2011.)