

**APPENDIX 1**

**ECONOMIC STATUS  
OF  
WASHINGTON, OREGON, AND CALIFORNIA  
CPS FISHERIES  
IN 2003**

Dr. Sam Herrick – National Marine Fisheries Service, Southwest Fisheries Science Center

June 2004

Table 1. Pacific coast landings (mt) and real<sup>1</sup> exvessel revenues (\$ 2003) for Pacific sardine, Pacific mackerel<sup>2</sup>, jack mackerel, anchovy and market squid by landing area, 1981-2003.

Year	Landings (mt)					Exvessel Revenues (2002 \$)				
	Sardine	P. Mackerel	J. Mackerel	Anchovy	Squid	Sardine	P. Mackerel	J. Mackerel	Anchovy	Squid
<b>San Diego</b>										
1981			11	12	2	4	\$13,520	\$7,262	\$1,169	\$3,222
1982			9	<1		<1	\$7,032	\$219		\$36
1983			4	<1	2	1	\$4,415	\$863	\$1,112	\$1,162
1984	<1		2	<1		<1	\$411	\$2,491	\$642	\$39
1985			1	<1		<1	\$1,362	\$132		\$218
1986			2	<1		<1	\$1,985	\$310		\$18
1987	<1		7	<1	<1	3	\$48	\$7,347	\$1,396	\$16
1988	<1		6	<1	6	19	\$77	\$6,738	\$1	\$4,509
1989	<1		6	<1	94	2	\$211	\$6,690	\$19	\$276,147
1990	<1		6	<1	18	1	\$251	\$5,864	\$80	\$52,005
1991			11	<1	400		\$8,971	\$99	\$128,242	
1992	<1		17	1	121	16	\$216	\$17,090	\$1,169	\$25,887
1993	<1		16	3	4	<1	\$634	\$15,829	\$3,131	\$1,241
1994	2		21	5	28	<1	\$1,023	\$15,926	\$2,999	\$11,334
1995	5		31	<1	38	<1	\$4,704	\$19,947	\$503	\$23,353
1996	1		26		145	2	\$1,254	\$17,474		\$75,971
1997	3		16	<1	12	3	\$3,280	\$10,838	\$2	\$6,108
1998	215		52		2	2	\$22,042	\$9,507		\$1,117
1999	592		15	<1	2	4	\$64,634	\$4,928	\$135	\$718
2000	19		1	<1	4	35	\$7,749	\$1,387	\$240	\$1,832
2001	<1		3	<1	2	11	\$102	\$2,621	\$114	\$766
2002	91		<1	<1	5		\$60,486	\$866	\$115	\$3,150
2003	28		<1	3	14		\$21,635	\$974	\$3,195	\$8,103
<b>Orange/LA</b>										
1981	15	28,963	14,700	38,216	8,291	\$5,380	\$10,727,651	\$5,393,046	\$4,169,186	\$1,719,804
1982	2	14,900	18,131	32,515	4,293	\$834	\$4,951,606	\$6,219,222	\$2,567,297	\$972,741
1983	<1	14,641	6,786	900	854	\$262	\$4,583,836	\$2,234,947	\$165,469	\$527,977
1984	<1	21,668	3,566	205	66	\$530	\$7,032,781	\$1,099,703	\$127,573	\$57,426
1985	3	16,395	5,860	43	3,096	\$1,235	\$4,603,524	\$1,658,607	\$26,596	\$1,544,813
1986	287	19,865	4,289	141	8,122	\$89,650	\$4,857,468	\$1,090,995	\$31,848	\$2,731,200
1987	317	25,227	7,801	109	5,422	\$66,637	\$5,334,119	\$1,657,371	\$28,996	\$1,605,356
1988	1,172	29,495	4,939	93	15,090	\$217,056	\$6,946,421	\$1,067,520	\$24,365	\$4,329,913
1989	505	20,789	10,704	479	16,353	\$78,426	\$4,457,111	\$2,209,960	\$68,695	\$3,824,242
1990	1,179	28,617	2,936	193	9,798	\$188,666	\$4,962,423	\$503,293	\$40,850	\$1,786,590
1991	6,415	31,387	1,640	414	12,305	\$955,021	\$6,520,268	\$286,327	\$60,942	\$2,019,410
1992	13,849	18,071	1,096	137	1,701	\$1,676,735	\$4,759,308	\$266,258	\$32,711	\$318,194
1993	13,978	11,715	1,269	119	12,890	\$1,680,418	\$1,750,562	\$211,275	\$20,420	\$3,227,729
1994	9,032	9,842	2,460	137	11,231	\$1,102,456	\$1,596,729	\$318,225	\$19,313	\$2,796,437
1995	34,137	7,864	1,596	298	18,413	\$3,439,110	\$1,181,432	\$222,704	\$32,576	\$5,915,846
1996	23,923	8,765	2,054	239	14,994	\$2,452,848	\$1,277,616	\$309,736	\$27,832	\$4,940,245
1997	26,534	14,002	823	1,121	17,779	\$2,812,647	\$2,446,898	\$199,666	\$105,732	\$6,463,550
1998	31,702	18,150	1,012	338	228	\$3,135,886	\$2,519,498	\$349,996	\$40,605	\$143,307
1999	39,084	8,551	927	1,418	27,597	\$3,790,819	\$1,119,465	\$200,020	\$235,488	\$9,845,361
2000	39,181	21,631	1,210	1,279	44,840	\$4,431,189	\$3,051,816	\$238,718	\$154,619	\$12,003,720
2001	40,764	6,676	3,624	3,658	39,171	\$4,621,746	\$1,099,933	\$579,666	\$332,547	\$8,765,047
2002	39,308	3,366	1,004	1,206	28,137	\$3,893,610	\$494,240	\$205,599	\$103,315	\$6,533,616
2003	22,824	3,941	133	206	7,693	\$1,932,650	\$621,363	\$50,997	\$30,645	\$4,501,337

Year	Landings (mt)					Exvessel Revenues (2002 \$)				
	Sardine	P. Mackerel	J. Mackerel	Anchovy	Squid	Sardine	P. Mackerel	J. Mackerel	Anchovy	Squid
<b>Ventura/Santa Barbara</b>										
1981	<1	4,870	2,847	9,035	2,390	\$13	\$1,792,539	\$1,042,171	\$998,504	\$383,826
1982		845	1,195	6,441	1,403		\$322,840	\$393,658	\$587,102	\$250,461
1983	<1	473	559	2,727	3	\$2	\$138,676	\$148,556	\$253,730	\$3,363
1984		1,136	52	141	7		\$320,982	\$15,758	\$70,388	\$13,174
1985		1,302	787	110	2,959		\$335,920	\$210,266	\$46,572	\$1,151,552
1986	18	1,280	297	161	6,412	\$4,457	\$310,453	\$77,387	\$62,856	\$1,584,412
1987	74	1,382	8	140	8,407	\$15,865	\$308,395	\$2,372	\$53,775	\$2,194,007
1988	13	599	7	154	16,334	\$4,100	\$164,690	\$1,565	\$65,378	\$4,762,411
1989	93	253		161	16,862	\$14,382	\$33,834		\$69,400	\$4,056,820
1990	236	290	76	141	10,601	\$27,554	\$35,652	\$8,932	\$58,264	\$2,504,498
1991	186	136	9	190	16,905	\$26,788	\$18,500	\$1,192	\$73,869	\$3,098,365
1992	973	92	<1	90	2,807	\$85,078	\$9,346	\$3	\$35,002	\$545,787
1993	692	35	<1	298	17,367	\$61,668	\$4,327	\$10	\$100,354	\$4,373,568
1994	315	40	48	341	21,794	\$27,004	\$9,362	\$3,770	\$164,427	\$5,996,777
1995	355	249	<1	346	41,184	\$45,966	\$27,269	\$216	\$163,651	\$16,008,825
1996	461	67	11	375	46,435	\$43,538	\$33,778	\$1,775	\$168,212	\$13,712,366
1997	3,357	1,160	7	510	34,611	\$260,119	\$114,440	\$2,832	\$100,156	\$10,304,529
1998	899	1,306		239	2,176	\$99,704	\$75,153		\$86,597	\$1,360,565
1999	2,545	215	<1	2,233	52,719	\$262,718	\$38,883	\$9	\$348,550	\$21,706,205
2000	3,048	230	9	3,548	48,747	\$312,833	\$22,726	\$922	\$413,912	\$10,562,500
2001	3,957	72	<1	3,909	31,876	\$381,164	\$6,854	\$31	\$465,182	\$5,465,051
2002	5,065	<1	<1	732	11,814	\$633,933	\$1	\$2	\$184,716	\$3,177,191
2003	1,980	39	<1	496	11,479	\$183,381	\$4,314	\$25	\$127,884	\$6,768,282
<b>San Luis Obispo</b>										
1981		<1	<1	17	<1		\$356	\$15	\$11,484	\$136
1982		<1	<1		<1		\$849	\$9		\$404
1983					<1					\$211
1984					<1					\$120
1985	<1	<1	<1	48	<1	\$95	\$19	\$53	\$23,654	\$404
1986		<1	<1	11	<1		\$30	\$17	\$4,605	\$125
1987				2	<1				\$905	\$375
1988	<1	<1			<1	\$1	\$27			\$82
1989		<1	<1	<1	19		\$120	\$1	\$40	\$5,823
1990	121	<1	17		<1	\$14,109	\$172	\$1,910		\$71
1991		<1	<1		<1		\$124	\$10		\$21
1992		<1	<1		<1		\$299	\$66		\$122
1993		<1	<1	1	2,036		\$52	\$15	\$598	\$962,622
1994	<1	<1	<1	<1	1,344	\$29	\$111	\$5	\$421	\$681,239
1995		<1	<1		183		\$18	\$3		\$45,882
1996		<1			217		\$5			\$69,507
1997	<1			23	<1	\$21			\$10,360	\$13
1998	<1	<1	<1		<1	\$35	\$163	\$44		\$1
1999		<1		2	17		\$30		\$963	\$5,015
2000		<1	<1		<1		\$2	\$1		\$7
2001		<1		4	79		\$17		\$1,577	\$16,096
2002	102				356	\$6,853				\$77,283
2003		<1	<1	3	650		\$16	\$17	\$1,402	\$357,252

Year	Landings (mt)					Exvessel Revenues (2002 \$)				
	Sardine	P. Mackerel	J. Mackerel	Anchovy	Squid	Sardine	P. Mackerel	J. Mackerel	Anchovy	Squid
<b>Monterey/Santa Cruz</b>										
1981		1,356	212	4,617	12,823		\$395,908	\$80,763	\$483,713	\$6,966,811
1982	<1	1,870	280	2,609	10,607	\$72	\$567,570	\$94,270	\$236,882	\$4,857,701
1983	<1	2,689	2,457	321	500	\$20	\$520,215	\$497,820	\$69,332	\$358,759
1984	<1	3,221	5,481	1,895	391	\$417	\$535,640	\$1,006,674	\$176,963	\$315,923
1985	2	449	228	1,138	3,813	\$814	\$101,460	\$89,239	\$133,316	\$2,985,516
1986	85	946	191	808	5,488	\$27,174	\$170,080	\$85,852	\$216,799	\$1,974,768
1987	48	321	210	676	5,611	\$7,603	\$55,240	\$47,431	\$112,509	\$1,754,579
1988	3	23	122	696	4,897	\$1,068	\$5,617	\$41,304	\$235,369	\$1,607,865
1989	238	14	37	929	7,146	\$169,241	\$4,215	\$39,707	\$180,254	\$2,117,549
1990	127	2,115	192	2,132	7,918	\$26,654	\$356,872	\$48,461	\$414,505	\$1,816,802
1991	986	134	44	2,527	6,703	\$135,642	\$19,065	\$20,307	\$360,011	\$2,046,910
1992	3,093	374	110	608	6,111	\$500,083	\$92,896	\$22,591	\$95,730	\$1,545,424
1993	676	38	345	1,285	6,040	\$104,173	\$15,554	\$102,137	\$283,125	\$2,384,251
1994	2,289	38	191	986	13,648	\$641,245	\$20,640	\$111,768	\$289,673	\$5,267,416
1995	5,678	461	109	1,111	2,449	\$579,366	\$72,251	\$88,916	\$104,837	\$939,971
1996	7,988	703	91	3,554	4,672	\$999,609	\$103,382	\$14,840	\$416,472	\$1,549,304
1997	13,357	3,208	327	3,895	8,283	\$1,763,460	\$477,161	\$68,579	\$617,267	\$3,237,138
1998	10,009	1,457	33	901		\$670,975	\$155,476	\$12,098	\$73,889	
1999	16,417	3	24	1,511	301	\$1,291,057	\$10,796	\$1,887	\$362,814	\$86,033
2000	11,367	39	50	6,804	7,125	\$1,024,074	\$6,730	\$28,479	\$838,797	\$2,026,535
2001	7,103	172		11,660	7,747	\$1,480,314	\$19,474		\$587,469	\$1,830,793
2002	13,607		2	2,690	25,067	\$1,319,366		\$394	\$259,370	\$6,906,053
2003	7,907	1	20	706	13,901	\$667,134	\$4,217	\$2,467	\$81,964	\$7,908,783
<b>San Francisco</b>										
1981	<1	<1	2	204	<1	\$1	\$12	\$1,522	\$84,107	\$13
1982			<1	395	2			\$270	\$179,033	\$894
1983		2	1	332	462		\$871	\$338	\$122,208	\$330,836
1984		<1	<1	538	97		\$430	\$146	\$214,671	\$84,481
1985		1	<1	259	77		\$4,571	\$39	\$99,165	\$51,514
1986		<1		393	832		\$400		\$136,275	\$323,329
1987	<1	<1	<1	424	343	\$93	\$61	\$601	\$152,208	\$114,877
1988	<1	<1	<1	492	299	\$5	\$40	\$403	\$170,995	\$94,920
1989	<1		4	755	3	\$16		\$4,107	\$218,620	\$1,958
1990	<1	<1	2	714	129	\$37	\$572	\$945	\$198,452	\$39,881
1991		<1	<1	459	1,471		\$95	\$87	\$135,259	\$433,501
1992	35	11	1	164	2,448	\$7,437	\$11,041	\$422	\$42,085	\$573,803
1993		1	<1	244	1,018		\$1,187	\$247	\$130,277	\$449,655
1994	<1	2	<1	280	2,236	\$672	\$1,818	\$329	\$97,294	\$749,615
1995	2	<1	<1	93	747	\$553	\$613	\$271	\$10,039	\$249,281
1996		4	<1	105	333		\$2,194	\$638	\$27,976	\$121,639
1997	3	1	<1	156	205	\$1,432	\$834	\$395	\$11,784	\$76,672
1998	464	4	1	<1	14	\$34,084	\$3,838	\$892	\$22	\$16,978
1999	949	<1	<1	47	5	\$87,867	\$539	\$31	\$15,825	\$1,911
2000	<1	<1	<1	117	<1	\$221	\$21	\$717	\$67,035	\$4
2001	<1	<1		42	280	\$98	\$1,689		\$13,864	\$76,436
2002	172			17	865	\$32,485			\$9,623	\$218,315
2003	<1	<1	<1		2,808	\$504	\$144	\$2		\$1,547,389



Year	Landings (mt)				Exvessel Revenues (2002 \$)					
	Sardine	P. Mackerel	J. Mackerel	Anchovy	Squid	Sardine	P. Mackerel	J. Mackerel	Anchovy	Squid
<b>Oregon</b>										
1981			<1					\$2		
1982			<1	<1				\$70	\$168	
1983			8					\$12,647		
1984			3					\$1,262		
1985			<1	<1	<1			\$3	\$2	\$59
1986			<1					\$1		
1987			2					\$751		
1988			<1		<1			\$480		\$18
1989			5		<1			\$1,508		\$20
1990			10					\$4,663		
1991			<1	19				\$194	\$3,035	
1992		4	462	317				\$189	\$976	
1993		<1	280	277				\$1,025	\$3,180	
1994			252	202	<1			\$11,250	\$9,067	\$234
1995			189	149	<1			\$4,087	\$8,249	\$556
1996			61	259				\$4,306	\$8,633	
1997			1,611	373				\$2,534	\$831	
1998		1	536	686		\$849		\$9,460	\$47,924	
1999		776	259	518		\$92,742		\$1,089	\$6,431	
2000		9,528	119	161	<1	\$1,214,567		\$6,653	\$18,212	\$317
2001		12,780	322	183		\$1,644,576		\$73,367	\$45,821	
2002		22,711	127	9	3	\$2,866,295		\$6,575	\$2,164	\$1,807
2003		25,258	160	74	39	\$2,944,988		\$18,636	\$15,912	\$3,111
<b>Washington</b>										
1981					1					\$528
1982					5					\$15,969
1983					3					\$8,709
1984					10					\$15,631
1985					12					\$17,932
1986					22					\$29,403
1987					78					\$84,791
1988					40					\$45,535
1989					62					\$72,765
1990					50					\$54,134
1991					55					\$46,655
1992					42					\$40,328
1993					20					\$12,980
1994					39					\$31,827
1995					118					\$75,010
1996				3	86				\$771	\$71,378
1997				<1	59				\$88	\$46,090
1998				39	103				\$3,847	\$66,291
1999		1		108	98		\$1,782		\$8,206	\$71,588
2000		4,842		20	79		\$701,167		\$2,352	\$50,457
2001		11,127		32	68		\$1,279,274		\$5,626	\$71,770
2002		15,833		12	229		\$1,969,194		\$1,829	\$71,779
2003		11,920		2	214		\$1,469,888		\$119	\$65,941

Source: PacFIN data extracted April, 2004.

<sup>1</sup>Real values are current values adjusted to eliminate the effects of inflation. This adjustment has been made by dividing current values by the current year GDP implicit price deflator, with a base year of 2003.

<sup>2</sup>Pacific mackerel landings and revenues also include landings and revenues of unspecified mackerel.

Table 2. Average annual real<sup>1</sup> exvessel prices (\$ 2003) for Pacific sardine, Pacific mackerel<sup>2</sup>, jack mackerel, anchovy and market squid, 1981-2003.

<b>Year</b>	<b>Pacific Sardine \$/lb</b>	<b>Pacific Mackerel \$/lb</b>	<b>Jack Mackerel \$/lb</b>	<b>Anchovy \$/lb</b>	<b>Squid \$/lb</b>
1981	\$0.16	\$0.17	\$0.17	\$0.05	\$0.17
1982	\$0.21	\$0.15	\$0.16	\$0.04	\$0.17
1983	\$0.13	\$0.14	\$0.13	\$0.07	\$0.30
1984	\$0.62	\$0.13	\$0.11	\$0.10	\$0.38
1985	\$0.16	\$0.12	\$0.13	\$0.10	\$0.27
1986	\$0.14	\$0.11	\$0.12	\$0.14	\$0.14
1987	\$0.09	\$0.09	\$0.10	\$0.14	\$0.13
1988	\$0.08	\$0.11	\$0.10	\$0.17	\$0.13
1989	\$0.14	\$0.09	\$0.10	\$0.16	\$0.11
1990	\$0.07	\$0.08	\$0.08	\$0.11	\$0.10
1991	\$0.07	\$0.09	\$0.08	\$0.09	\$0.09
1992	\$0.06	\$0.12	\$0.09	\$0.11	\$0.10
1993	\$0.05	\$0.07	\$0.08	\$0.13	\$0.13
1994	\$0.07	\$0.07	\$0.07	\$0.16	\$0.14
1995	\$0.05	\$0.07	\$0.08	\$0.10	\$0.17
1996	\$0.05	\$0.07	\$0.06	\$0.08	\$0.14
1997	\$0.05	\$0.07	\$0.08	\$0.07	\$0.15
1998	\$0.04	\$0.06	\$0.11	\$0.08	\$0.28
1999	\$0.04	\$0.06	\$0.06	\$0.09	\$0.18
2000	\$0.05	\$0.06	\$0.09	\$0.06	\$0.11
2001	\$0.06	\$0.08	\$0.07	\$0.03	\$0.09
2002	\$0.05	\$0.06	\$0.09	\$0.06	\$0.12
2003	\$0.05	\$0.07	\$0.14	\$0.08	\$0.26

Source: PacFIN data extracted April, 2004.

Table 3. West coast landings (mt) and real<sup>1</sup> exvessel revenues (\$ 2003) for Pacific sardine, Pacific mackerel<sup>2</sup>, jack mackerel, anchovy and market squid by state, 1981-2003.

Year	Pacific Sardine mt	Pacific Sardine Rev	Pacific Mackerel mt	Pacific Mackerel Rev	Jack Mackerel mt	Jack Mackerel Rev	Anchovy mt	Anchovy Rev	Squid mt	Squid Rev
<b>California</b>										
1981	15	\$5,395	35,388	\$13,016,193	17,778	\$6,528,745	52308	\$5,850,126	23,510	\$9,075,683
1982	2	\$906	36,065	\$12,236,669	19,617	\$6,712,519	42150	\$3,630,892	16,308	\$6,084,640
1983	1	\$283	41,471	\$13,003,739	9,829	\$2,905,572	4427	\$667,572	1,824	\$1,226,442
1984	1	\$1,357	44,081	\$12,938,051	9,149	\$2,136,541	2889	\$632,340	564	\$473,621
1985	6	\$2,143	37,772	\$9,980,811	6,876	\$1,958,513	1626	\$339,436	10,276	\$6,020,545
1986	388	\$121,281	48,089	\$11,817,383	4,777	\$1,254,652	1535	\$459,647	21,278	\$6,710,609
1987	439	\$90,265	46,724	\$9,660,114	8,020	\$1,709,174	1390	\$362,572	19,984	\$5,715,930
1988	1,188	\$222,335	50,863	\$11,828,613	5,068	\$1,110,853	1478	\$513,907	37,232	\$10,983,628
1989	837	\$262,526	47,708	\$9,508,452	10,745	\$2,253,850	2449	\$826,319	40,893	\$10,123,066
1990	1,664	\$257,400	40,081	\$6,923,510	3,223	\$563,627	3208	\$768,512	28,447	\$6,149,700
1991	7,587	\$1,117,451	32,018	\$6,675,928	1,693	\$308,133	4014	\$766,221	37,389	\$7,600,105
1992	17,950	\$2,269,565	18,577	\$4,897,663	1,209	\$291,293	1124	\$233,250	13,110	\$2,994,827
1993	15,346	\$1,847,660	11,819	\$1,795,987	1,673	\$326,067	1959	\$539,024	42,830	\$12,278,163
1994	11,644	\$1,774,130	10,008	\$1,667,643	2,704	\$437,179	1789	\$588,803	55,892	\$16,780,963
1995	40,256	\$4,081,042	8,626	\$1,314,697	1,728	\$326,552	1886	\$334,528	70,252	\$25,584,904
1996	32,553	\$3,548,824	9,604	\$1,456,493	2,177	\$334,305	4419	\$717,308	80,561	\$24,616,695
1997	43,290	\$4,918,275	18,401	\$3,058,749	1,160	\$272,825	5719	\$852,305	70,329	\$22,872,068
1998	43,311	\$3,967,570	20,978	\$2,767,424	1,052	\$367,422	1481	\$202,230	2,895	\$1,778,660
1999	59,591	\$5,497,408	8,788	\$1,175,581	952	\$202,601	5214	\$964,366	92,014	\$36,038,267
2000	53,664	\$5,783,744	21,904	\$3,084,113	1,269	\$269,173	11752	\$1,476,272	118,903	\$28,788,400
2001	51,893	\$6,490,652	6,925	\$1,131,555	3,624	\$579,910	19277	\$1,407,953	86,203	\$17,479,536
2002	58,353	\$5,947,832	3,369	\$497,373	1,005	\$206,153	4650	\$560,174	72,878	\$18,563,174
2003	34,300	\$2,939,372	3,999	\$632,877	155	\$56,718	1547	\$260,310	41,078	\$23,943,030
<b>Oregon</b>										
1981			<1	\$2						
1982			<1	\$70			<1	\$168		
1983			8	\$12,647						
1984			3	\$1,262						
1985			<1	\$3	<1	\$2	<1	\$59		
1986			<1	\$1						
1987			1	\$751						
1988			1	\$480			<1	\$18		
1989			5	\$1,508			<1	\$20		
1990			10	\$4,677						
1991			<1	\$194	19	\$3,035				
1992	4	\$0	462	\$189	317	\$977				
1993			280	\$1,025	277	\$3,180				
1994			252	\$11,250	202	\$9,067	1	\$234		
1995			189	\$4,087	149	\$8,249	<1	\$556		
1996			61	\$4,306	259	\$8,633				
1997			1,611	\$2,534	373	\$831				
1998	1	\$849	536	\$9,460	686	\$47,924				
1999	776	\$92,742	259	\$1,089	518	\$6,431				
2000	9,528	\$1,214,567	119	\$6,653	161	\$18,212	<1	\$317		
2001	12,780	\$1,644,576	322	\$73,367	183	\$45,821				
2002	22,711	\$2,866,295	127	\$6,575	9	\$2,164	3	\$1,807		
2003	25,258	\$2,944,988	160	\$18,636	74	\$15,912	39	\$3,111		



Year	Pacific Sardine mt	Pacific Sardine Rev	Pacific Mackerel mt	Pacific Mackerel Rev	Jack Mackerel mt	Jack Mackerel Rev	Anchovy mt	Anchovy Rev	Squid mt	Squid Rev
<b>Washington</b>										
1981							1	\$528		
1982							5	\$15,969		
1983							3	\$8,709		
1984			<1	\$134			10	\$15,631		
1985							12	\$17,932		
1986							22	\$29,403		
1987							78	\$84,791		
1988							40	\$45,535		
1989			<1	\$67			62	\$72,765		
1990			<1	\$202			50	\$54,134		
1991			<1	\$50			54	\$46,655		
1992			6	\$3,387			42	\$40,328		
1993			30	\$4,974			44	\$32,366		
1994			33	\$3,442			70	\$56,338		
1995			7	\$938			130	\$87,883		
1996			65	\$22,402	3	\$771	86	\$71,378		
1997			156	\$19,207	1	\$88	59	\$46,090		
1998			46	\$4,507	39	\$3,847	103	\$66,291		
1999	1	\$1,782	47	\$3,955	108	\$8,206	98	\$71,588		
2000	4,842	\$701,167	19	\$2,063	20	\$2,352	79	\$50,457		
2001	11,127	\$1,279,274	371	\$79,759	32	\$5,626	68	\$71,770		
2002	15,833	\$1,969,194	248	\$29,920	12	\$1,829	229	\$71,779		
2003	11,920	\$1,469,888	54	\$10,327	2	\$119	214	\$65,941		

Source: PacFIN data extracted April, 2004.

<sup>1</sup>Real values are current values adjusted to eliminate the effects of inflation. This adjustment has been made by dividing current values by the current year GDP implicit price deflator, with a base year of 2003.

<sup>2</sup>Pacific mackerel landings and revenues also include landings and revenues of unspecified mackerel.

Table 4. Pacific coast CPS landings (mt) and real<sup>1</sup> exvessel revenues (\$ 2003) by gear group, 1981-2003.

Year	Roundhaul or Lampara	Dip Net	Pot or Trap	Trawl	Hook and Line	Gillnet	Other or Unknown
<b>Landings (metric tons)</b>							
1981	120,510	8,231	<1	11	9	75	74
1982	108,952	3,668	1	13	27	71	1,339
1983	41,397	490	<1	8	2	27	15,611
1984	48,057	64	<1	3	1	144	8,281
1985	50,312	494	<1	20	9	374	5,246
1986	65,595	88	4	2	<1	107	10,221
1987	64,607	213	1	6	7	1,296	10,459
1988	86,612	138	1	39	1	1,377	7,515
1989	94,757	248	<1	132	3	96	7,193
1990	70,263	489	2	15	34	64	5,725
1991	58,327	724	37	127	4	56	23,451
1992	45,788	4,322	3	802	15	28	1,779
1993	68,233	5,171	2	592	3	43	114
1994	77,694	2,988	59	510	49	9	1,084
1995	119,406	1,341	4	386	153	8	1,600
1996	128,277	850	1	401	64	23	84
1997	138,523	247	<1	2,157	90	14	9
1998	69,654	37	<1	1,333	44	5	7
1999	166,644	528	72	983	12	10	93
2000	219,871	1,552	45	275	420	4	17
2001	190,193	1,791	1	621	156	3	
2002	178,638	761	<1	10	10	2	
2003	118,481	133	26	81	29	<1	<1
<b>Revenues (2002 \$)</b>							
1981	\$32,838,302	\$1,496,631	\$344	\$6,909	\$8,554	\$48,900	\$25,094
1982	\$27,430,475	\$758,077	\$3,608	\$7,002	\$14,812	\$36,630	\$393,561
1983	\$13,213,912	\$311,037	\$1,471	\$4,391	\$2,134	\$13,984	\$4,257,342
1984	\$13,934,696	\$54,232	\$2,582	\$2,922	\$1,515	\$50,081	\$2,086,459
1985	\$15,056,803	\$471,154	\$403	\$13,841	\$5,900	\$177,101	\$2,549,537
1986	\$17,129,603	\$39,270	\$1,545	\$1,926	\$194	\$48,789	\$3,119,647
1987	\$14,631,716	\$58,639	\$1,906	\$3,398	\$2,553	\$345,692	\$2,533,208
1988	\$21,992,369	\$44,895	\$1,229	\$40,587	\$691	\$345,214	\$2,211,282
1989	\$20,991,052	\$57,649	\$187	\$40,312	\$1,171	\$31,407	\$1,664,605
1990	\$13,409,488	\$59,220	\$1,129	\$8,501	\$37,383	\$34,409	\$1,120,916
1991	\$12,321,938	\$67,283	\$8,612	\$29,378	\$5,807	\$19,599	\$4,016,597
1992	\$9,682,223	\$584,007	\$2,409	\$8,667	\$23,943	\$12,370	\$373,692
1993	\$15,735,867	\$937,956	\$2,124	\$10,913	\$4,274	\$22,378	\$28,111
1994	\$20,399,439	\$537,801	\$20,446	\$32,658	\$48,253	\$5,384	\$205,728
1995	\$30,806,043	\$397,157	\$2,279	\$19,983	\$63,774	\$4,876	\$351,280
1996	\$30,365,904	\$212,489	\$557	\$45,403	\$70,353	\$12,142	\$21,825
1997	\$31,764,223	\$94,727	\$111	\$33,566	\$100,988	\$7,449	\$3,435
1998	\$9,017,584	\$27,013	\$148	\$84,644	\$63,421	\$3,225	\$4,958
1999	\$43,755,147	\$203,072	\$17,214	\$37,768	\$27,444	\$6,397	\$7,531
2000	\$40,818,056	\$409,904	\$10,660	\$28,611	\$93,485	\$2,105	\$1,003
2001	\$29,635,534	\$395,715	\$411	\$182,174	\$41,228	\$1,680	
2002	\$30,501,238	\$189,364	\$128	\$3,934	\$24,514	\$1,333	
2003	\$32,179,784	\$74,102	\$15,534	\$23,045	\$38,229	\$121	\$23

Source: PacFIN data extracted April, 2004.

<sup>1</sup>Real values are current values adjusted to eliminate the effects of inflation. This adjustment has been made by dividing current values by the current year GDP implicit price deflator, with a base year of 2003.

Table 5. Number of vessels with Pacific coast landings of CPS finfish and/or market squid by landing area, 1981-2003.

Year	Ventura &				Monterey &			Northern CA	Other CA	Oregon	Washington	Other
	San Diego	Orange & LA	Santa Barbara	San Luis Obispo	Santa Cruz	San Francisco						
<b>CPS Finfish</b>												
1981	52	128	67	29	60	7	5	1	5	4	19	
1982	28	94	17	5	57	6	4	4	4	1	14	
1983	29	74	15		48	10	3		64	1	12	
1984	14	69	10		71	8	2		3	1	15	
1985	13	68	13	7	77	25			4	2	10	
1986	15	79	14	5	52	15			1	2	9	
1987	30	105	35	1	43	18	1		92	2	19	
1988	35	98	33	3	44	23	2		79	3	20	
1989	44	91	22	8	24	13	1		152	2	18	
1990	41	85	30	15	81	24			162	2	22	
1991	52	89	31	11	30	5			39	2	17	
1992	53	85	12	27	150	135	6		38	3	26	
1993	46	103	14	16	73	41	5		28	3	23	
1994	49	94	17	7	52	53	8	4	38	2	14	
1995	40	96	32	3	35	38	2		43	1	18	
1996	35	99	29	1	41	38	2		41	9	30	
1997	26	102	20	2	49	36	2		50	9	11	
1998	21	77	15	10	35	56	11		46	8	9	
1999	18	80	17	2	23	18	4		44	10	7	
2000	16	83	18	2	41	35	7		43	18	10	
2001	18	73	17	2	26	13	4		43	27	5	
2002	8	79	9	2	19	6	3		42	23	7	
2003	8	57	13	2	22	6	2		43	17	9	
<b>Market Squid</b>												
1981	6	61	26	9	53	1	10				3	
1982	1	51	25	7	53	2	7				3	
1983	4	44	12	4	32	22	3				7	
1984	1	9	17	6	31	8	2				4	
1985	1	44	32	5	59	10	1				23	
1986	2	43	27	7	41	4	1				8	
1987	7	41	30	3	33	17	1				7	
1988	10	51	32	4	30	7	1				11	
1989	3	48	31	7	28	3	2				5	
1990	7	42	26	3	36	9	2				3	
1991		36	24	2	30	7	1				3	
1992	1	18	14	4	36	16	4				1	
1993	1	43	25	13	33	13	1				9	
1994	3	42	31	11	34	6	3	1			9	
1995	2	59	44	8	28	4	2				27	
1996	4	62	66	8	28	2					39	
1997	3	55	50	3	28	4	11				22	
1998	3	19	45	1		3	2				18	
1999	1	76	81	3	13	1	2				44	
2000	2	86	65	1	23	1	2				42	
2001	4	62	50	2	18	3	3				27	
2002		72	61	5	33	3	1				32	
2003		43	53	9	36	17					29	

Source: PacFIN data extracted April, 2004.

Table 6. Number of vessels with CPS finfish or market squid as principle species<sup>1</sup> by principle landing area<sup>2</sup>, 1981-2003.

Year	Ventura &		Monterey &		Northern CA	Other CA	Oregon	Washington	Other
	San Diego	Orange & LA	Santa Barbara	San Luis Obispo					
<b>CPS Finfish</b>									
1981	3	52	6	1	3			1	4
1982	2	41	5	1	2	1		1	3
1983	4	16	3		4			1	3
1984		21	4		17	1		1	4
1985	1	22	4	2	1	1		2	1
1986		17	3	1	2	1		2	
1987	1	31	4		1	2		2	
1988	2	19	3		1	2		1	2
1989	6	22	3		4	1		2	1
1990	4	22	3		2			2	2
1991	6	35	4		4			2	1
1992	5	37	4		3	2	1	1	1
1993	2	23	3	1	1	1			1
1994	2	27	6	1	2		1		
1995	2	18	5		2			1	
1996	2	19	7		9				
1997	1	26	3	1	5				
1998	3	37	4		8		1		
1999	1	19	2		6	1		2	1
2000		26	3		4			6	1
2001		24	3		3			11	6
2002	2	23	4		1			10	8
2003	2	12	2		2		1	10	5
<b>Market Squid</b>									
1981	2	14	3		33				1
1982		16	2		35				2
1983		6			4	1		1	7
1984					3			4	7
1985		7	7		28			3	
1986		10	4		17	1			1
1987	3	7	8		14				
1988	4	19	18		15				1
1989	2	18	12		15				1
1990	1	8	13		12				
1991		5	15		12	1			
1992			4		16	2			
1993		15	13	3	16				2
1994		8	18		19	2			4
1995		24	31		3	2			2
1996		30	41		7			1	15
1997		28	33		8				9
1998		3	22						6
1999		31	48		1				20
2000	1	44	32		8				9
2001	1	32	22		8	1			5
2002		33	11		17	1			6
2003		20	19		15	1			14

Source: PacFIN data extracted April, 2004.

<sup>1</sup>Principle species is the species that accounts for the greatest share of a vessel's total exvessel revenues across all species landed.

<sup>2</sup>Principle landing area is the area that accounts for the greatest share of a vessel's total exvessel revenues across all areas in which it had landings.

Table 7. Number of processors and buyers, by landing area, whose annual purchases of CPS finfish or market squid represents the largest share of their total annual exvessel expenditures, 1981-2003.

Year	San Diego	Orange & LA	Ventura & Santa Barbara	San Luis Obispo	Monterey & Santa Cruz	San Francisco	Northern CA	Other CA	Oregon	Washington	Other
<b>CPS Finfish</b>											
1981	1	5	4	2	1	1					2
1982		3	5							1	5
1983	1	2	3		1	1				1	3
1984		1	3		2	2				1	3
1985		2	2	1	1	1				1	1
1986		2	1		1	1				1	2
1987		2	2		1	2				2	1
1988		3	3		1	1				2	1
1989	3	2	1		1	1				2	1
1990	5	2	2		1	2				2	1
1991	2	7	3		2	1				2	1
1992	1	7	4		1	1				1	
1993		4	5		2	1				1	
1994	2	6	4		2	1		1		1	
1995	1	7	4			1			1		2
1996	2	4	6		1	1				1	1
1997	1	9	6		1	1				1	
1998	1		6		3	1	1			1	2
1999	2	5	4		2	2	1			1	
2000		9	4		3				2	1	1
2001		6	6	1		1	1		4	1	
2002	2	5	5		1	1			3	1	
2003	2	7	4		1		1		3	2	
<b>Market Squid</b>											
1981		1	2		5	4					
1982		1			7	1	1			2	
1983						2				3	
1984					1					2	
1985			3		6						1
1986		1	5		6	1					1
1987		1	5		4	1					
1988		2	3	2	2	2					
1989		2	11		3	2					
1990		2	5		4						
1991		1	6			1					
1992			4			3					
1993	1		8	1	1	1					
1994		2	16	1	2			1			1
1995		1	16								1
1996		4	10		2					1	3
1997		6	10		1						1
1998	1		3								
1999		5	19								5
2000	1	9	20	1	1						5
2001	1	3	14	1	1		1				2
2002		4	11								3
2003		4	11	1	2						1

Source: PacFIN data extracted April, 2004.

**Figure 1. Percentage contribution of Pacific coast CPS finfish and market squid landings to the total exvessel value of all Pacific coast landings, 1981-2003.**

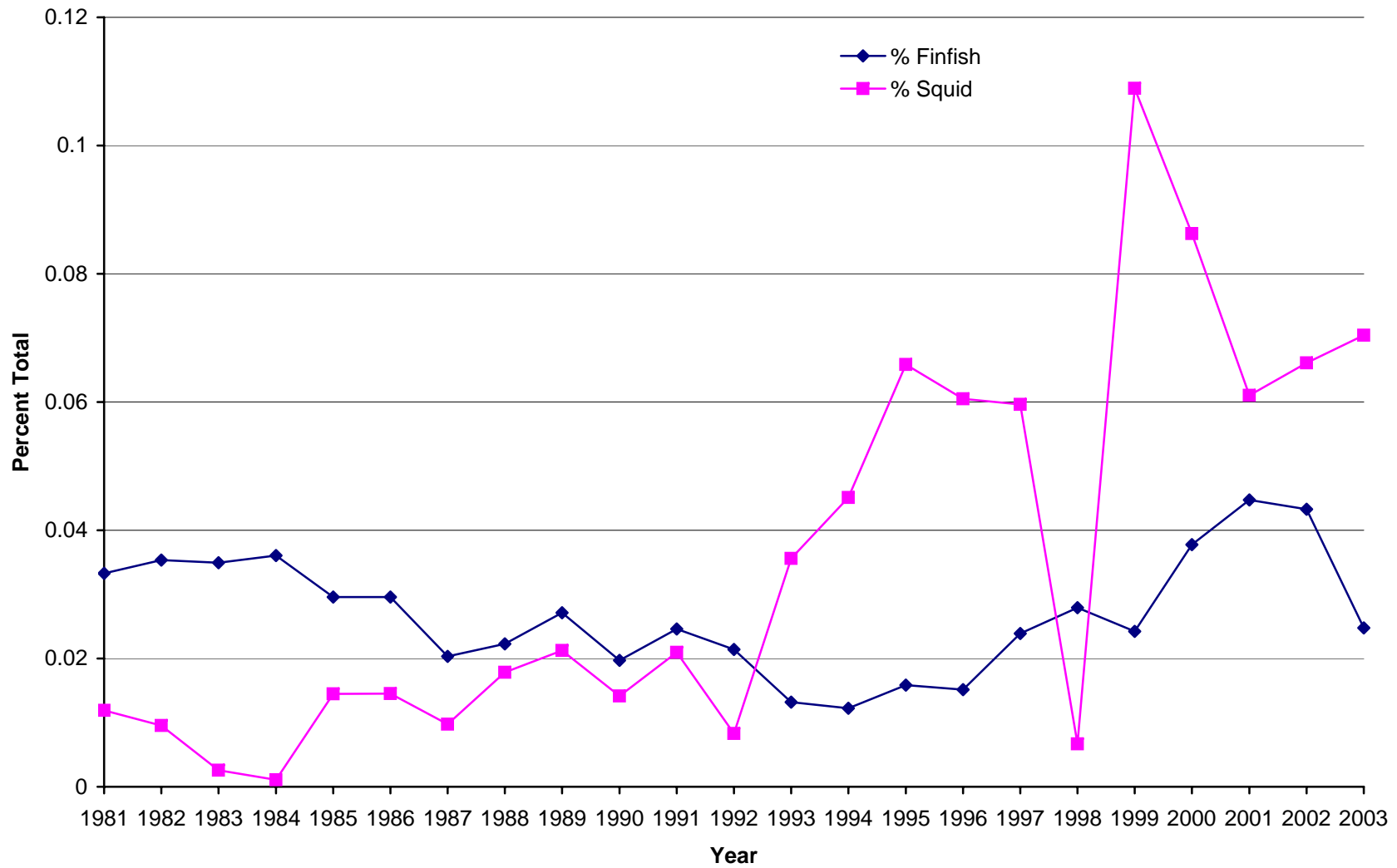
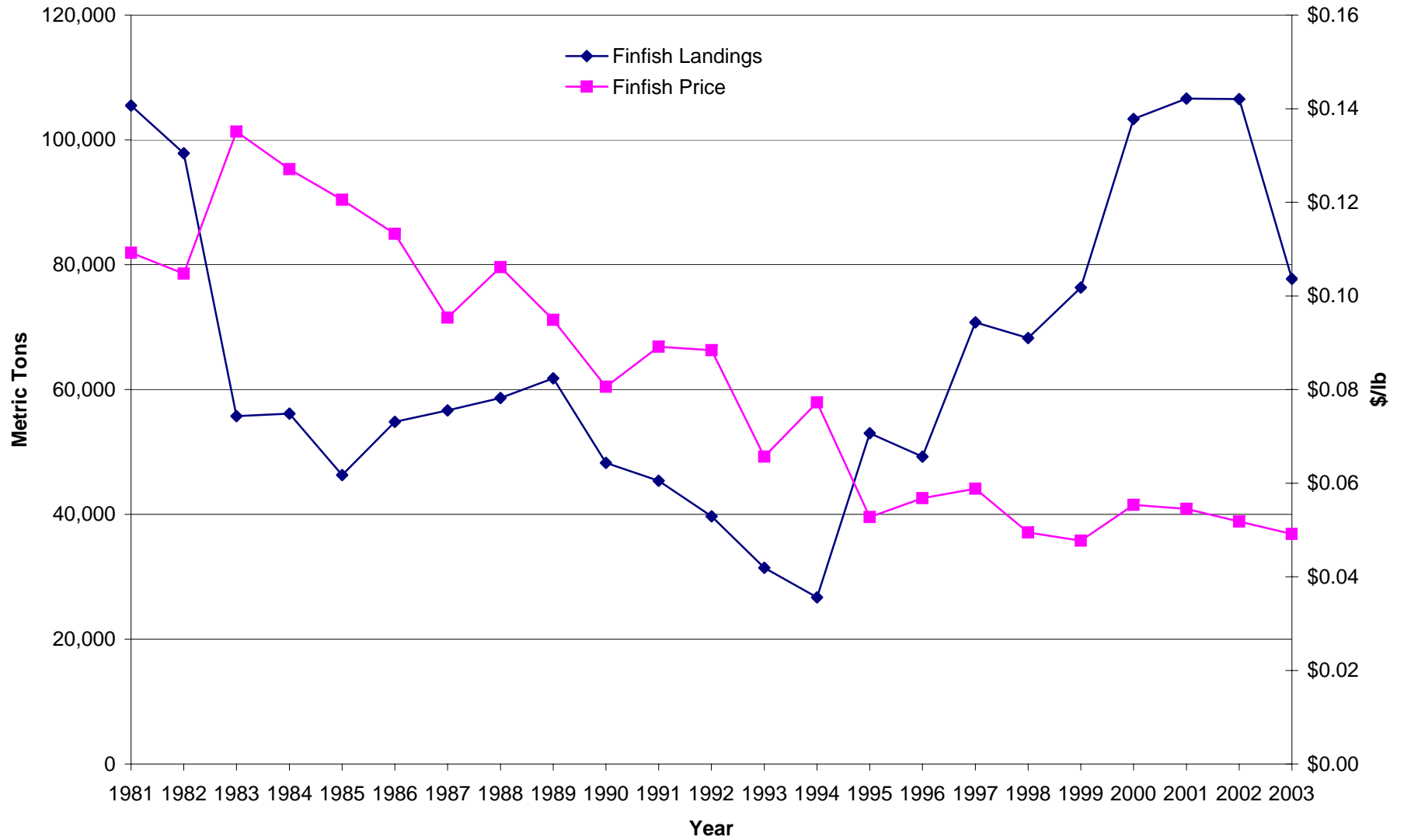
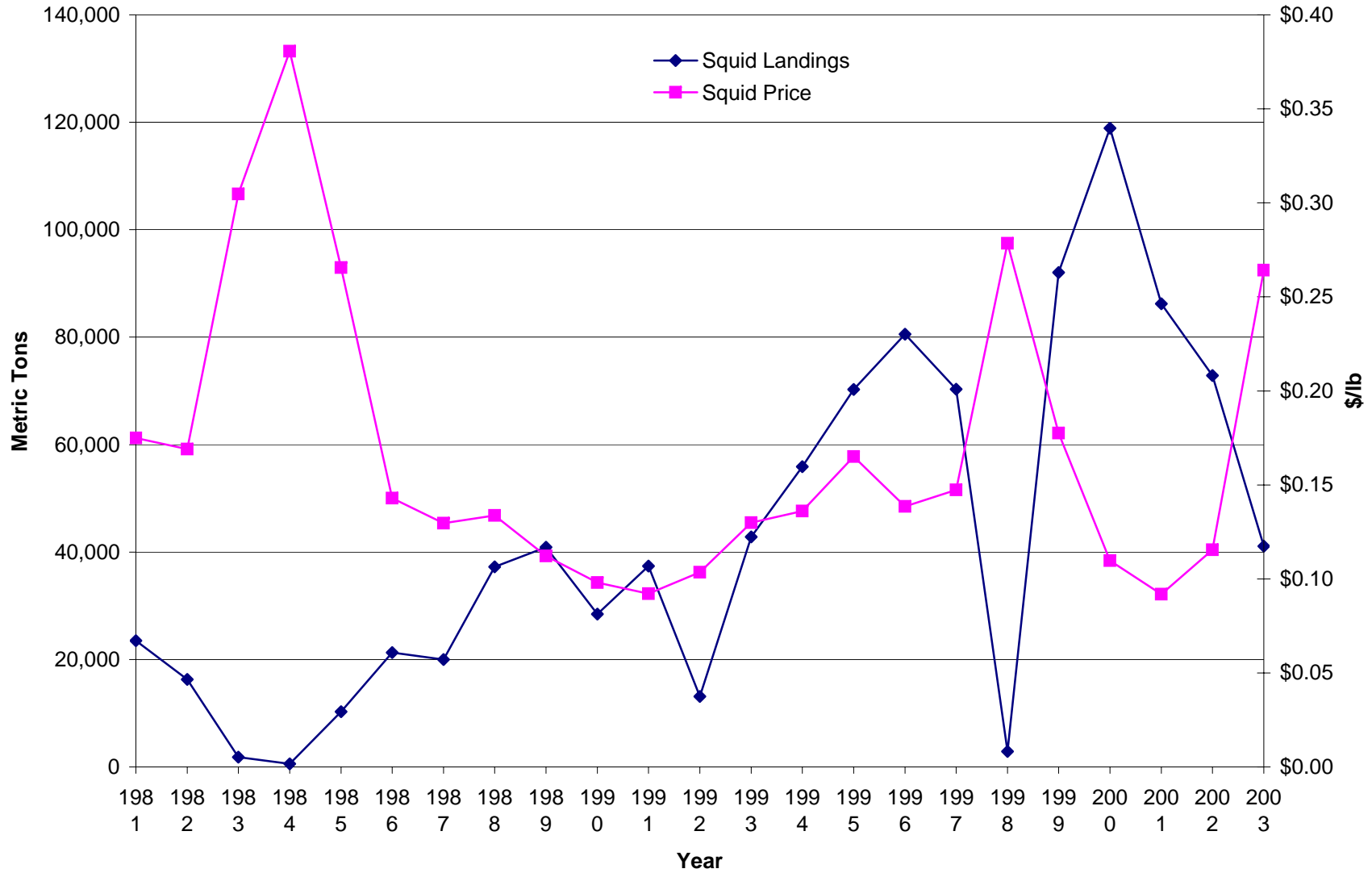


Figure 2. Pacific coast CPS finfish landings and real exvessel price (\$/lb, 2003 \$), 1981-2003.

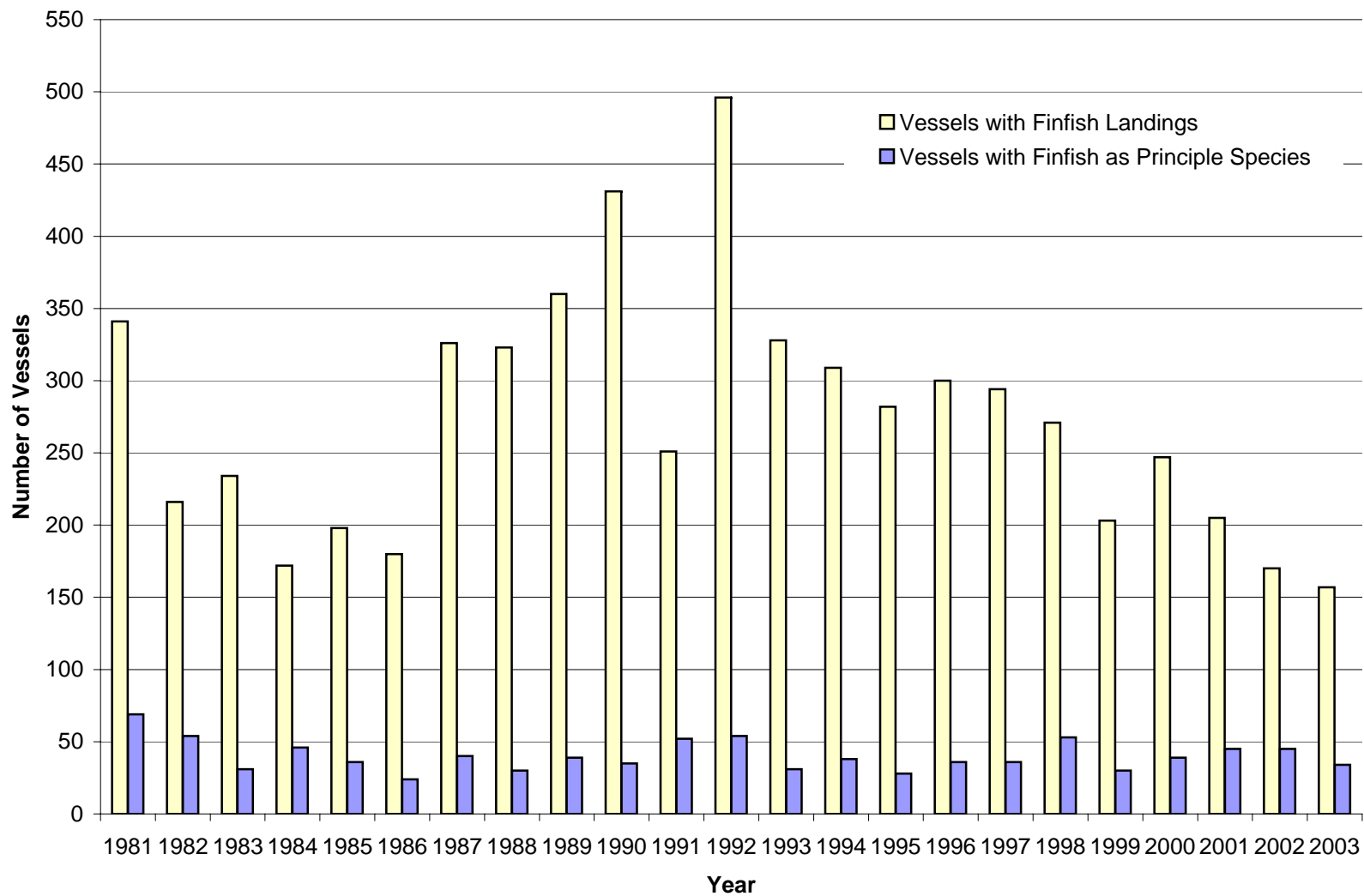


**Figure 3. Pacific coast market squid landings and real exvessel price (\$/lb, 2003 \$), 1981-2003.**





**Figure 4. Number of vessels with Pacific coast landings of CPS finfish, and number for which CPS finfish was the principle species, 1981-2003.**



**Figure 5. Number of vessels with Pacific coast landings of market squid, and number for which market squid was the principle species, 1981-2003.**

