

Agenda Item C.7.a Supplemental GMT Reports 1-3

Action Items #2-20

Action Item Checklist (AIC)

2027-28 Harvest Specifications

Action Item #1: Specifications (addressed under Agenda Item C.4)

2027-28 Management Measures

Action Item #2: Area Management

Action Item #3: Off the Top Deductions

Action Item #4: Tribal

Action Item #5: Harvest Guidelines

Action Item #6: Annual Catch Targets

Action Item #7: Allocations (except sablefish, yelloweye, and canary rockfish)

Action Item #8: Further Allocations

Action Item #9: Sablefish

Action Item #10: Yelloweye Rockfish

Action Item Checklist #11-20

Action Item #11: Canary Rockfish

Action Item #12: Trawl – At-sea set-asides

Action Item #13: Trawl – Shore-based IFQ

Action Item #14: Non-Trawl – Open Access North of 40°10' N. lat.

Action Item #15: Non-Trawl – Open Access South of 40°10' N. lat.

Action Item #16: Non-Trawl – Limited Entry Fixed Gear North of 40°10' N. lat.

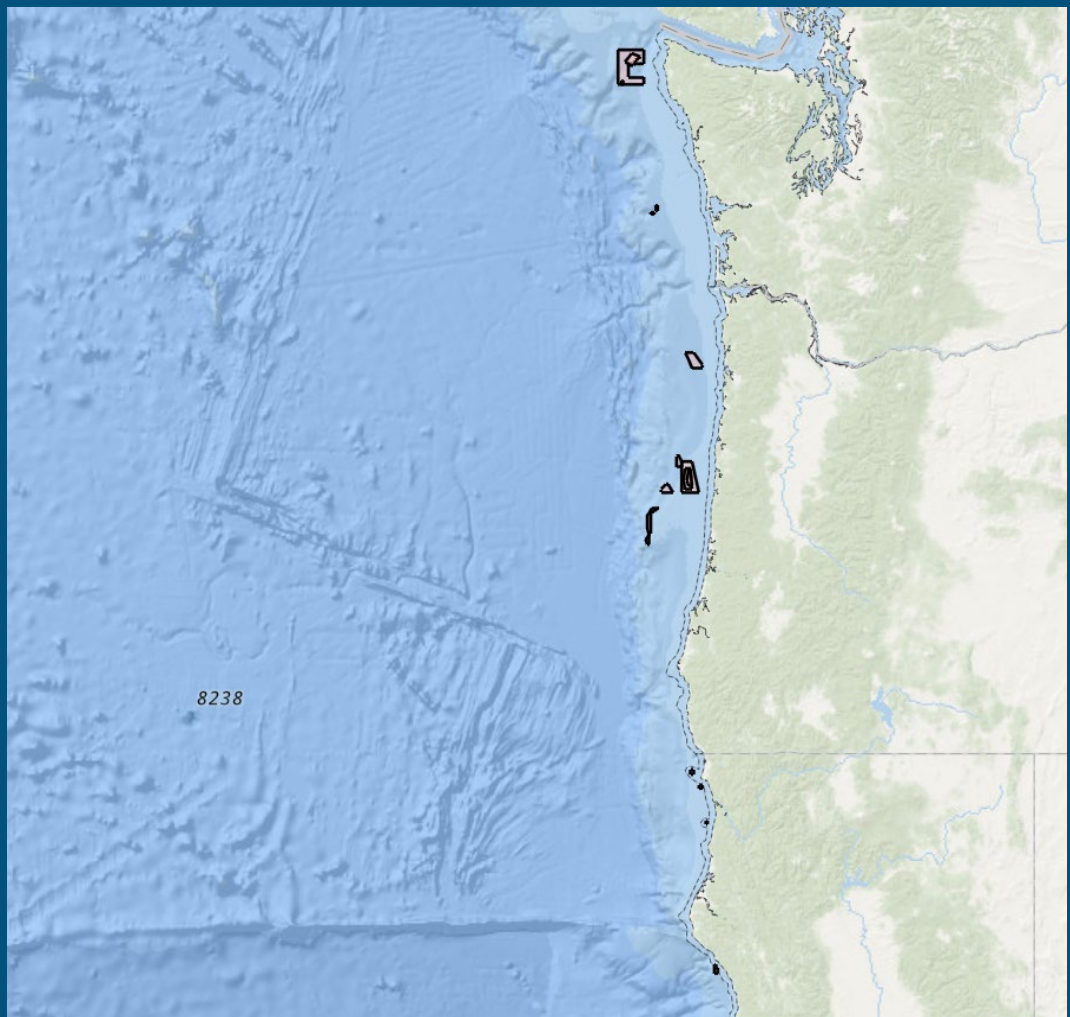
Action Item #17: Non-Trawl – Limited Entry Fixed Gear South of 40°10' N. lat.

Action Item #18: Washington Recreational

Action Item #19: Oregon Recreational

Action Item #20: California Recreational

Area Management (AIC#2)



Source: [NMFS Pacific Coast Non-Trawl Fishery Closures Map](#)

Yelloweye Rockfish Conservation Areas

- **Consider Removal of some YRCAs that have never been turned on**
- **YRCAs under consideration include:**
 - **Stonewall Bank Expansion Areas 1 and 2 (OR)**
 - **Point St. George (CA)**
 - **South Reef (CA)**
 - **Reading Rock (CA)**
 - **Point Delgada (North) (CA)**
 - **Point Delgada (South) (CA)**

Lasuen Knoll (a.k.a. 14-Mile Bank)

- **The GMT recommends removing the 150 fathom (fm) Non-Trawl RCA boundary line surrounding Lasuen Knoll**
 - **No defined 100 fm boundary line, so the 100-150 fm closure around Lasuen Knoll is not enforceable.**
 - **No known rockfish species of concern that require protection around Lasuen Knoll**
 - **150 fm line is not needed**
 - **Removal could reduce regulatory complexity & confusion among fishermen**

Non-Trawl Rockfish Conservation Area Regulatory Text

- The GMT recommends revising the language in the Federal non-trawl *“ The Non-Trawl RCA is an area closed to fishing with particular non-trawl gear types, as defined at § 660.11. Non-Trawl RCA boundaries apply in the EEZ only; ~~see appropriate state regulations for state closures, however state regulations may implement RCA boundaries in state waters; see appropriate state regulations.~~ Non-Trawl RCA boundaries may be revised via inseason action; therefore, users should refer back to this table throughout the year.”*

Off-the-Top Deductions (AIC#3)



Photo Credit:
ODFW

Research & Incidental Open Access (IOA)

Research Set-asides

- **Adopt the rolling 5-year median mortality for research set-asides for 2027-28 with the exception of yelloweye rockfish and petrale sole (Table 1, Appendix 1, C.7.a GMT Report 1)**
- **For yelloweye rockfish, continuing to use the custom value of 2.92 mt.**
- **For petrale sole, adopt the 2025-26 value of 24.1 mt.**

Incidental Open Access

- **Adopt the rolling 5-year average mortality in the IOA sector as set-asides for 2027-28 (Table 1, Appendix 1, C.7.a GMT Report 1)**

Exempted Fishing Permits (EFP)

EFP Set-Asides --- There are no EFP set-asides requested for 2027-28

Off-the-Top Deductions for Research, IOA, and EFP

- **The GMT recommends the Council adopt as interim FPA the research, IOA, and EFP set-asides in Table A-1 of Appendix 1, C.7.a GMT Report 1.**

Tribal (AIC#4)



Vessel: Sea Mercy
Photo Credit:

Treaty Set-Aside Requests – 2027 & 2028

- **Tribal set-aside requests for 2027 & 2028 have been updated from the initial requests in November.**
- **Species with changed set-aside values:**

| Species | Nov 2025 Request | Updated Request |
|-----------------------|------------------|-----------------|
| Canary rockfish | 50 mt | 35 mt |
| Petrable sole | 322 mt | 290 mt |
| Shortspine thornyhead | 50 mt | 40 mt |
| Widow rockfish | 200 mt | 100 mt |
| Yelloweye rockfish | 16 mt | 12 mt |

- **All other set-asides remain the same as in November 2025 request.**
- **The GMT recommends the Council adopt the requested Tribal set-asides, as show in Agenda Item, C.7.a. Supplemental Tribal Report 1, April 2026.**
 - **These updated Tribal set-asides are captured in Table A-1, Appendix 1, C7a GMT Report**

Harvest Guidelines (AIC#5)

Adopt Fishery HGs in
Table A3 of
Agenda Item C.7.a,
Supplemental
GMT Report 1.



Annual Catch Targets (AIC#6)



Annual Catch Targets

- **The GMT recommends the Council adopt Status Quo as PPA for the following ACTs:**
 - **Recreational copper rockfish south of 34° 27' N. lat.:**
 - **20.1 & 22 mt in 2027 & 2028, respectively**
 - **Commercial non-trawl shortspine thornyhead north of 34° 27' N. lat.:**
 - **60.9 mt in both years**



Annual Catch Targets

- **The GMT recommends the Council adopt Option 2 as PPA for the following California Recreational ACTs south of 40° 10' N. lat.:**
 - **Vermilion/sunset rockfish:**
 - **168 & 164.4 mt in 2027 & 2028, respectively**
 - **Quillback rockfish:**
 - **7.1 mt in both years**
 - **Lingcod:**
 - **387.1 & 391.3 mt in 2027 & 2028, respectively**



Biennial Allocations (AIC#7)



Biennial Trawl/Non-Trawl Allocations

- **Big Skate: 95% Trawl, 5% Non-Trawl**
- **Bocaccio south of 40° 10' N. lat.: 39% Trawl, 61% Non-Trawl**
- **Cowcod south of 40° 10' N. lat.: 36% Trawl, 64% Non-Trawl**
- **Lingcod south of 40° 10' N. lat.: 40% Trawl, 60% Non-Trawl**
- **Longnose skate: 90% Trawl, 10% Non-Trawl**
- **Petrable sole: Remainder to Trawl, 30 mt Non-Trawl**
- **Shelf rockfish north of 40° 10' N. lat.: 60.2% Trawl, 39.8% Non-Trawl**
- **Shelf rockfish south of 40° 10' N. lat.: 12.2% Trawl, 87.8% Non-Trawl**
- **Shortspine thornyhead: 71% Trawl, 29% Non-Trawl**

Biennial Trawl/Non-Trawl Allocations

- **The GMT recommends Option 4 as PPA for slope rockfish complex south of 40° 10' N. lat./"Blackgill math"**
 - **Option 1: Status quo, 63 percent trawl, 37 percent non-trawl**
 - **Option 2: "Blackgill math" status quo methodology**
 - **Option 3: 52 percent trawl, 48 percent non-trawl**
 - **Option 4: "Blackgill math" using a rolling five-year average mortality**

Photo
Credit:
ODFW,
Shawn Ruzzi



Biennial Trawl/Non-Trawl Allocations

- **Widow rockfish**

The GMT recommends Status Quo as PPA:

- **Option 1: Status Quo – Set the non-trawl allocation at 300 mt with the remainder allocated to trawl**
- **Option 2: Set the non-trawl allocation at 150 mt with the remainder allocated to trawl**



Other Allocations (AIC#8)



Photo: OR Sea Grant



Photo: NOAA Fisheries

Within Non-trawl allocations

- **The GMT recommends the following status quo sharing agreements as PPA:**
- **Cowcod south of 40° 10' N. Lat.**
 - **64% of HG to Non-trawl**
 - **Within non-trawl sector sharing 50:50 to commercial and recreational**
- **Bocaccio south of 40° 10' N. Lat.**
 - **30.9% commercial**
 - **69.1% recreational**

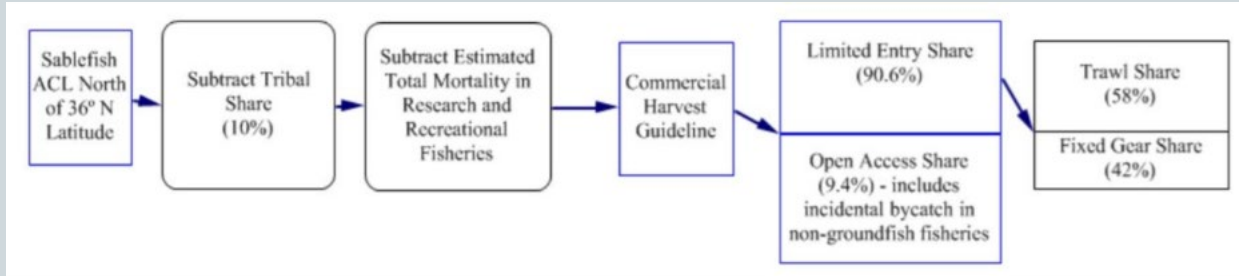


Sablefish (AIC#9)



Photo: Jason Jones (front) and Kyle Edwards; F/V Timmy Boy

Sablefish north of 36° N. lat.



The GMT recommends adopting the Status Quo allocation framework as PPA and adopting Option 2 as PPA to increase the recreational set-aside to 50 mt.

| Year | WA total mortality ^{a/} (mt) | OR total mortality (mt) | CA total mortality (mt) | Rec. total mortality (mt) | Set Aside (mt) | % attainment |
|--------------------|---------------------------------------|-------------------------|-------------------------|---------------------------|----------------|--------------|
| 2021 | - | 1.0 | 0.0 | 1.0 | 6 | - |
| 2022 | - | 1.9 | 0.6 | 2.4 | 6 | - |
| 2023 | 10.5 | 4.6 | 17.3 | 32.4 | 6 | 540% |
| 2024 | 19.8 | 5.8 | 1.9 | 27.5 | 6 | 458% |
| 2025 ^{b/} | 27.8 | 2.9 | 3.8 | 34.5 | 30 | 115% |

a/ Washington recreational data for sablefish was unavailable prior to 2023, because the sampling program did not estimate mortality of sablefish as an individual stock until 2023.

b/ 2025 recreational data is incomplete. Oregon data is through November, and California data is through October.

Sablefish south of 36° N. lat.

The GMT recommends adopting as PPA the Status Quo biennial allocation, within non-trawl recreational set-aside, and within non-trawl shares.

| | Percent Allocated | 2027 Allocation (mt) | 2028 Allocation (mt) | 2025 Estimated Mortality (mt) |
|----------------------|--------------------------|-----------------------------|-----------------------------|--------------------------------------|
| Fishery HG | - | 2,990 | 3,235 | 336.5 |
| Trawl Allocation | 42% | 1,256 | 1,359 | 93.0 |
| Non-Trawl Allocation | 58% | 1,734 | 1,876 | 243.5 |
| Rec. Set-aside | - | 10 | 10 | 1.2 |
| Non-Trawl HG | - | 1,724 | 1,866 | 242.3 |
| LEFG Share | 70% | 1,207 | 1,307 | 197.7 |
| OA Share | 30% | 517 | 560 | 44.6 |

Yelloweye Rockfish (AIC#10)



Yelloweye Rockfish

- **The GMT recommends maintaining the ACTs for the 2027-28 harvest specifications biennium.**
- **Rationale:**
 - **Precautionary approach based on the relative spawning output narrowly surpassing the management target of 40% (40.1%)**
 - **An ACT provides a management buffer on a stock that may be retained for the first time in over 20 years.**
 - **ACTs also serve to account for catch projection uncertainty**

Yelloweye Rockfish

Table 9. Alternative 1 and 2 yelloweye rockfish allocations, HGs, and annual catch targets (ACT) for 2027 and 2028 under status quo allocations in metric tons (mt) based on updated off-the-top deductions. 2024 estimated mortality is provided for comparison. Data Source: GEMM

| | Alternative 1 2027/28 (mt) | | Alternative 2 2027/28 (mt) | | 2024 Estimated Mortality (mt) |
|--|-------------------------------|------------|-------------------------------|------------|----------------------------------|
| ACL | 113.0 | | 85.0 | | 25.0 |
| Off-the-Top Deduction | 16.3 | | 16.3 | | 3.6 |
| Fishery HG | 96.7 | | 68.7 | | 21.4 |
| Trawl (8%) | 7.7 | | 5.5 | | 0.6 |
| <i>At-Sea</i> | - | | - | | - |
| <i>IFQ</i> | 7.7 | | 5.5 | | 0.6 |
| Non-trawl (92%) | HG | ACT | HG | ACT | |
| | 89.0 | 69.7 | 63.2 | 49.6 | 20.8 |
| <i>Non-nearshore / Nearshore (20.9%)</i> | 18.6 | 14.6 | 13.2 | 10.4 | 9.2 |
| <i>WA Rec (25.6%)</i> | 22.8 | 17.9 | 16.2 | 12.7 | 3.4 |
| <i>OR Rec (23.3%)</i> | 20.7 | 16.3 | 14.7 | 11.5 | 3.6 |
| <i>CA Rec (30.2%)</i> | 26.9 | 21.1 | 19.1 | 15.0 | 4.6 |

Canary rockfish (AIC#11)



Photo: F/V Lynoma, Port Orford, OR;
Chris Peterson, Action Works Photography & OR Sea Grant

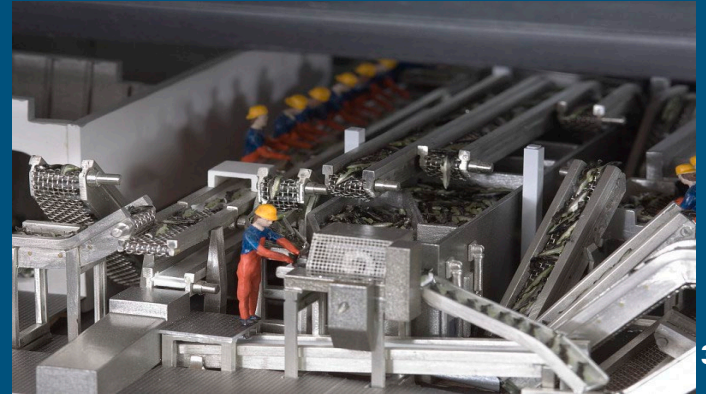
Canary rockfish

The GMT recommends adopting as PPA the Status Quo biennial allocations and within non-trawl share proportions.

| | Alternative 1 (mt) | | Alternative 2 (mt) | |
|--|--------------------|--------------|--------------------|--------------|
| | 2027 | 2028 | 2027 | 2028 |
| ACL | 606.0 | 623.0 | 643.0 | 664.0 |
| Off-the-Top Deduction | 41.5 | 41.5 | 41.5 | 41.5 |
| Fishery HG | 564.5 | 581.5 | 601.5 | 622.5 |
| Trawl (72.3%) | 408.1 | 420.4 | 434.9 | 450.1 |
| <i>At-Sea</i> | 20.0 | 20.0 | 20.0 | 20.0 |
| <i>IFQ</i> | 388.1 | 400.4 | 414.9 | 430.1 |
| Non-trawl (27.7%) | 156.4 | 161.1 | 166.6 | 172.4 |
| <i>Non-nearshore / Nearshore (36%)</i> | 56.3 | 58.0 | 60.0 | 62.1 |
| <i>WA Rec (12.3%)</i> | 19.2 | 19.8 | 20.5 | 21.2 |
| <i>OR Rec (18.5%)</i> | 28.9 | 29.8 | 30.8 | 31.9 |
| <i>CA Rec (33.2%)</i> | 51.9 | 53.5 | 55.3 | 57.2 |

**updated based on revised canary rockfish set-aside of 12 mt in Tribal Report 1, compared to 16 mt in November*

Trawl – At-Sea Set-Asides (AIC #12)



At-Sea Set-Asides - Options

- **Bootstrap simulation used to simulate probabilities of reaching set-aside**
- **Bootstrap scenarios:**
 - **Coastwide vs. Southern**
 - **Full vs. Avg. Attainment**
 - **Data inputs, 2002-2025 vs. 2017-2025**
- **Proposed removals were excluded from bootstrap**

| Species Category | Option 1 (Status Quo) | Option 2 |
|---|--------------------------|----------|
| Arrowtooth flounder | 100 | |
| Canary rockfish a/ | 20 | 21.9 |
| Darkblotched rockfish | 100 | |
| Dover sole | 10 | remove |
| Lingcod north of 40° 10' N. lat. | 15 | remove |
| Longnose skate | 5 | remove |
| Other flatfish | 100 | |
| Pacific halibut | 10 | |
| Pacific ocean perch | 300 | |
| Petrale sole | 5 | remove |
| Sablefish north of 36° N. lat. | 429 | 305 |
| Shelf rockfish complex north of 40° 10' N. lat. | 35 | |
| Slope rockfish complex north of 40° 10' N. lat. | 300 | |
| Shortspine thornyhead | 70 | 76.3 |
| Widow rockfish | 300 | 200 |
| Yellowtail rockfish north of 40° 10' N. lat. a/ | 360 | 320 |

At-Sea Set-Asides - Recommendation

The GMT recommends Option 1 (Status Quo) for at-sea set-asides, except Option 2 for:

- Canary rockfish (21.9 mt)
- Dover sole (remove)
- Lingcod north of 40° 10' N. lat. (remove)
- Longnose skate (remove)
- Petrale sole (remove)
- Sablefish north (305 mt)
- Shortspine thornyhead (76.3 mt)
- Widow rockfish (300 mt)
- Yellowtail rockfish north (320 mt)



C/P Starbound offloading product in Coos Bay, OR.
(Photo: Joel Prickett, ODFW)

Trawl – Shorebased IFQ (AIC #13)



**Deckhand Cody Mazza, F/V Cassandra Anne, Astoria, OR.
(Photo: Chris Peterson, Action Works Photography & OR Sea Grant.)**

Trawl – Shorebased IFQ

The GMT recommends adopting as PPA the Status Quo IFQ trip limits for non-IFQ species. For all stocks and species groups with a limited numerical trip limit (e.g., Pacific spiny dogfish), no vessel landings approached the trip limit in 2025.

| Stock, Stock Complex, or Species Group | Trip Limit | Average Annual Total Mortality (mt), 2022-2024 | 2025 Estimated Total Mortality (mt) |
|--|------------------|--|-------------------------------------|
| Big skate | Unlimited | 92.7 | 30.5 |
| Blackgill rockfish b/ | Unlimited | 25.5 | 15.3 |
| Cabezon (California) | 50 lb./month | <0.1 | <0.1 |
| Cabezon/kelp greenling (Oregon) | 50 lb./month | <0.1 | <0.1 |
| California scorpionfish | Unlimited | - | - |
| Longnose skate | Unlimited | 523.1 | 451.8 |
| Nearshore rockfish complex north of 40°10' N. lat., Washington black rockfish, and black/blue/deacon rockfish (Oregon) | 300 lb./month | 0.2 | 0.1 |
| Other groundfish | Unlimited | 0.0 | <0.1 |
| Pacific spiny dogfish | 60,000 lb./month | 281.9 | 271.1 |

b/ The total estimated mortality and percent attainment of ACL are for the entire slope rockfish complex south of 40° 10' N. lat. IFQ landings are of blackgill rockfish only. Blackgill rockfish make up an average of 36 percent of slope rockfish south mortality each year.

Non-Trawl:
Open Access
& Limited Entry
North & South of
40° 10' N. lat.
(AIC# 14-17)



Photo Credit: ODFW

Non-Trawl Sablefish Trip Limit Adjustments

- **The GMT recommends adopting the Status Quo trip limits as PPA for open access (OA) and limited entry (LE) sablefish north and south of 36° N. lat.**



(Photo: Chris Peterson, Action Works Photography & OR Sea Grant.)

Non-Trawl Trip Limit Adjustments

- The GMT recommends adopting Option 1 as PPA for OA and LE shortspine thornyhead south of 34°27' N. lat. trip limits.
- The GMT recommends adopting Option 2 trip limits as PPA for OA and LE for the following stocks:
 - Chilipepper rockfish south of 40°10' N. lat.
 - Yellowtail rockfish north of 40°10' N. lat.
 - Shelf rockfish complex north of 40°10' N. lat.
 - Canary rockfish



(Photo: Chris Peterson,
Action Works Photography & OR Sea Grant.)

Non-Trawl Trip Limit Adjustments

- The GMT recommends adopting Option 3 as PPA for OA and LE widow rockfish trip limits.
- The GMT recommends adopting Option 2a trip limits as PPA for OA and LE south of 42° N. lat. for the following stocks:
 - Black rockfish north of 40° 10' N lat.
 - Nearshore rockfish north of 40° 10' N lat.
 - Shallow Nearshore rockfish south of 40° 10' N lat.
 - Deeper Nearshore rockfish 40° 10' to 34° 27' N lat.
 - Deeper Nearshore rockfish south of 34° 27' N lat.



(Photo: Chris Peterson, Action Works Photography & OR Sea Grant.)

California Quillback Rockfish Retention

- The GMT recommends **Option 2 as PPA for OA and LE California quillback rockfish trip limits.**

| Option | Comm. Projected Mortality (mt) | Rec ACT (mt) | Total Mortality (mt) | Percent Attain. (11.6mt) |
|--------------------------------------|--------------------------------|--------------|----------------------|--------------------------|
| SQ (No Retention) | 0.2 | 7.1 | 7.3 | 63% |
| Option 1: 75 lbs. / 2 months | 2.5 | | 9.6 | 83% |
| Option 2: 300 lbs. / 2 months | 3.8 | | 10.9 | 94% |
| Option 3: 500 lbs. / 2 months | 4.2 | | 11.3 | 97% |

Yelloweye Retention

- The GMT recommends adopting Option 1 as PPA for OA and LE yelloweye rockfish trip limits.

| | Sector | Trip Limit | landings Projection (mt) | Est. Discard Mortality (mt) | Est. Total Mortality (mt) | NT Attain HG (18.6 mt) | NT Attain ACT (14.6 mt) |
|------------|--------|-------------------|-----------------------------|--------------------------------|------------------------------|---------------------------|----------------------------|
| Status Quo | LEN | Prohibited | 0.00 | 12.4 | 12.4 | 67% | 85% |
| | OAN | Prohibited | 0.00 | | | | |
| | LES | Prohibited | 0.00 | | | | |
| | OAS | Prohibited | 0.00 | | | | |
| Option 1 | LEN | 75 lbs./2 months | 1.32 | 1.0 | 12.4 | 67% | 85% |
| | OAN | 50 lbs./2 months | 4.02 | | | | |
| | LES | 75 lbs./2 months | 0.44 | | | | |
| | OAS | 50 lbs./2 months | 5.62 | | | | |
| Option 2 | LEN | 100 lbs./2 months | 1.76 | 0.0 | 16.8 | 90% | 115% |
| | OAN | 75 lbs./2 months | 6.03 | | | | |
| | LES | 100 lbs./2 months | 0.59 | | | | |
| | OAS | 75 lbs./2 months | 8.43 | | | | |

Cowcod Retention

- The GMT recommends adopting Option 1 as PPA for OA and LE cowcod south of 40°10' N. lat trip limits.

| Sector | Trip Limit | landings Projection (mt) | Est. Discard Mortality (mt) | Est. Total Mortality (mt) | NT Attain. |
|--------|-------------------|-----------------------------|--------------------------------|------------------------------|------------|
| LE | Prohibited | 0.00 | 4.4 | 4.4 | 19% |
| OA | Prohibited | 0.00 | | | |
| LE | 75 lbs./2 months | 4.07 | 0.0 | 10.3 | 44% |
| OA | 50 lbs./2 months | 6.27 | | | |
| LE | 100 lbs./2 months | 5.42 | 0.0 | 14.8 | 63% |
| OA | 75 lbs./2 months | 9.41 | | | |

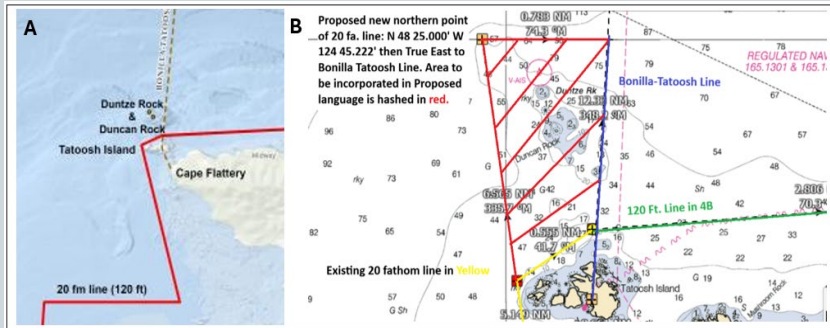


Photo Credit: WDFW

Washington Recreational (AIC #18)

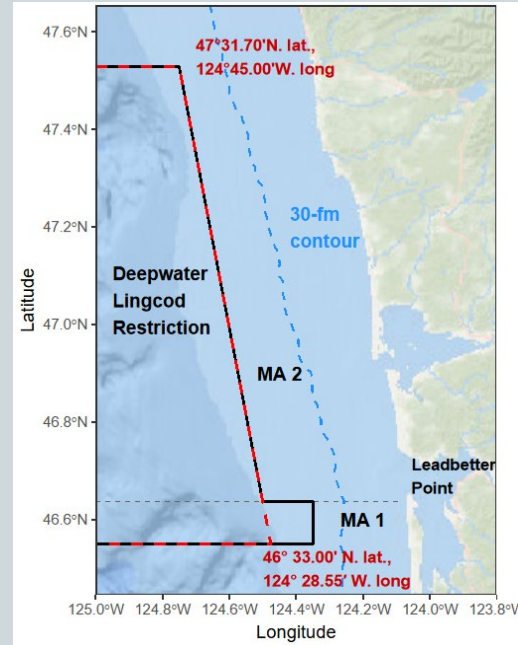
Proposed Changes to Depth Restrictions

Marine Area 4



- **Modify the 20-fm depth restriction currently in effect June – July to no longer include Duntze and Duncan Rocks in the restricted area**
- **Addresses enforcement concern**

Marine Areas 1 & 2



- **Change extent and timing of Deepwater Lingcod depth restriction**
- **Remove 30-fm lingcod depth restriction in MA2 (May)**

Depth Restrictions cont.

- **North Coast (Marine Area 4)**
 - **Modify the 20-fathom line depth restriction currently in place June–July to exclude Duntze and Duncan Rocks from the depth-restricted area. These rocks are located just west of the Bonilla-Tatoosh Line; the exclusion would be achieved by extending the existing 20-fathomline seaward to 48° 25.000' N. lat., 124° 45.222' W. long.**
- **South Coast (Marine Area 2)**
 - **Remove the 30-fathom lingcod restriction line which is currently in place in May.**
- **Columbia River and South Coast (Marine Areas 1 and 2)**
 - **Modify the deepwater lingcod restriction in Marine Area 1, so that the closure in both Marine Areas 1 and 2 would be described by a line extending from 47°31.70'N. lat., 124°45.00'W. long to 46° 33.00' N. lat., 124° 28.55' W. long**
 - **Modify the open dates for deepwater lingcod from September 1–30 to September 1–15**

Sub-bag limit options (and projected mortality)

Yelloweye Rockfish – 3 alternatives to Status Quo

- **Status Quo: prohibited year-round - 2.6 mt**
- **1 fish for the entire groundfish season (mid-March through mid-October) - 34.4 mt**
- ***1 fish in May - 12.9 mt***
- ***1 fish in May and only on halibut days - 9.9 mt***



Canary Rockfish

- ***Status Quo: 5 fish - 22.5 mt***
- **4 fish for the entire groundfish season - 20.7 mt**
- **4 fish in May, 5 fish in all other months - 22.3 mt**





Oregon Recreational (AIC #19)

Season structure with sub-bag limit options

- **Table 15-6. Alternative 1 – Oregon recreational groundfish season structure and bag limits under Alternative 1. Bold indicates changes from No Action.**

| | Jan | Feb | Mar | Apr | May | Jun | Jul | Aug | Sep | Oct | Nov | Dec |
|-------------------------------------|--|-----|-----|-----|-----|-----|-----|-----|-----|-----|-----|-----|
| Bottomfish Season | Open all depths | | | | | | | | | | | |
| Marine Bag Limit ^{a/} | Ten (10) | | | | | | | | | | | |
| --Yelloweye Rockfish | <i>Option 1 (Status Quo): No Retention</i> | | | | | | | | | | | |
| | <i>Option 2: Sub-bag limit of one (1)</i> | | | | | | | | | | | |
| Long-leader Bag Limit ^{b/} | Ten (10); Seaward of the 40-fathom regulatory line | | | | | | | | | | | |
| --Canary Rockfish | <i>Option 1 (Status Quo): Sub-bag limit of one (1)</i> | | | | | | | | | | | |
| | <i>Option 2: Sub-bag limit of two (2)</i> | | | | | | | | | | | |
| | <i>Option 3: No sub-bag limit</i> | | | | | | | | | | | |
| Lingcod Bag Limit | Three (3) | | | | | | | | | | | |
| Flatfish Bag Limit ^{c/} | Twenty-Five (25) | | | | | | | | | | | |
| Sablefish Bag Limit | Ten (10) | | | | | | | | | | | |

Sub-bag limit options (Marine Bag limit: 5) with associated projected total mortality

- **Canary rockfish**
 - Option 1 (Status Quo): One-fish sub-bag limit – 31.5 mt
 - Option 2: Two-fish sub-bag limit – 35.8 mt
 - Option 3: No sub-bag limit – 55.9 mt
- **Yelloweye rockfish**
 - Option 1 (Status Quo): No Retention – 7.2 mt
 - Option 2: One-fish sub-bag limit – 15.2 mt

California Recreational (AIC#20)



Photo Credit: CDFW/MARE

Groundfish Management Area Map



California Recreational (AIC#20)

Five Groundfish Management Areas (GMAs)

Boat-Based Rockfish and Lingcod Season Options

The GMT supports three season structure Options, defers to GAP on which of these they prefer

CAD Option 3
CAD Option 4
GAP Option

- Requested for analysis following March meeting

Updated Impact tables in Supplemental CDFW Report 1

California Recreational (AIC#20)

| Management Area | Jan | Feb | Mar | Apr | May | Jun | Jul | Aug | Sep | Oct | Nov | Dec |
|-----------------|--------|-----|-----|-----------|-----|-----|-------------|-----|-----|--------------|-----|-----|
| Northern | Closed | | | All depth | | | | | | | | |
| Mendocino | Closed | | | All depth | | | | | | | | |
| San Francisco | Closed | | | All depth | | | | | | | | |
| Central | Closed | | | All depth | | | | | | | | |
| Southern | Closed | | | All depth | | | <50 fathoms | | | >50 fathoms* | | |

*During the offshore only fishery, only shelf and slope rockfish and lingcod may be retained. Nearshore rockfish are prohibited.

Option 3
(Status Quo)

| Management Area | Jan | Feb | Mar | Apr | May | Jun | Jul | Aug | Sep | Oct | Nov | Dec |
|-----------------|--------|-----|-----|-----------|-----|-----|-----|-----|-----|-----|-----|-----|
| Northern | Closed | | | All depth | | | | | | | | |
| Mendocino | Closed | | | All depth | | | | | | | | |
| San Francisco | Closed | | | All depth | | | | | | | | |
| Central | Closed | | | All depth | | | | | | | | |
| Southern | Closed | | | All depth | | | | | | | | |

Option 4

| Management Area | Jan | Feb | Mar | Apr | May | Jun | Jul | Aug | Sep | Oct | Nov | Dec |
|-----------------|--------|-----|-----|-----------|-----|-----|-------------|-----|-----|-----|-----|-----------|
| Northern | Closed | | | All depth | | | | | | | | |
| Mendocino | Closed | | | All depth | | | | | | | | |
| San Francisco | Closed | | | All depth | | | | | | | | |
| Central | Closed | | | All depth | | | | | | | | |
| Southern | Closed | | | All depth | | | <50 fathoms | | | | | All depth |

GAP Option

Bag and Sub-Bag Limits

Vermilion/sunset rockfish

- GMT supports making vermillion/sunset rockfish sub-bag limits the same across the state (2)
 - Reduce sub-bag limit in the Northern GMA from 4 to 2

Cowcod and Yelloweye rockfish

- GMT supports a 1 fish sub-bag limit in either April or December – defers to GAP on which they prefer
- Recommends aligning the seasonal sub-bag limits on the same month for both species.

Supports Status Quo sub-bag limits for other rockfish species



Photo Credit(s): CDFW/MARE (top),
ODFW (bottom)

Rockfish, Cabezon, Greenling (RCG) Complex

- **Currently: Cabezon and kelp greenling regulations tied to rockfish**
 - Boat-based season applies to RCG complex
 - Count towards the 10-fish aggregate bag limit for RCG complex
- **GMT recommends decoupling the RCG complex**
 - Action would specify cabezon and kelp greenling regulations (bag limit and seasons) separately from rockfish
 - Cabezon: GMT recommends a 10 fish bag limit for cabezon; season open year-round at all depths
 - Kelp greenling: GMT recommends a 10 fish bag limit for kelp greenling; season open year-round at all depths
 - Rockfish: Only change is that the 10 fish aggregate daily bag limit only applies to rockfish species – cabezon and kelp greenling no longer count towards the limit.

Not likely to result in significant increases in mortality for rockfish, cabezon, or kelp greenling

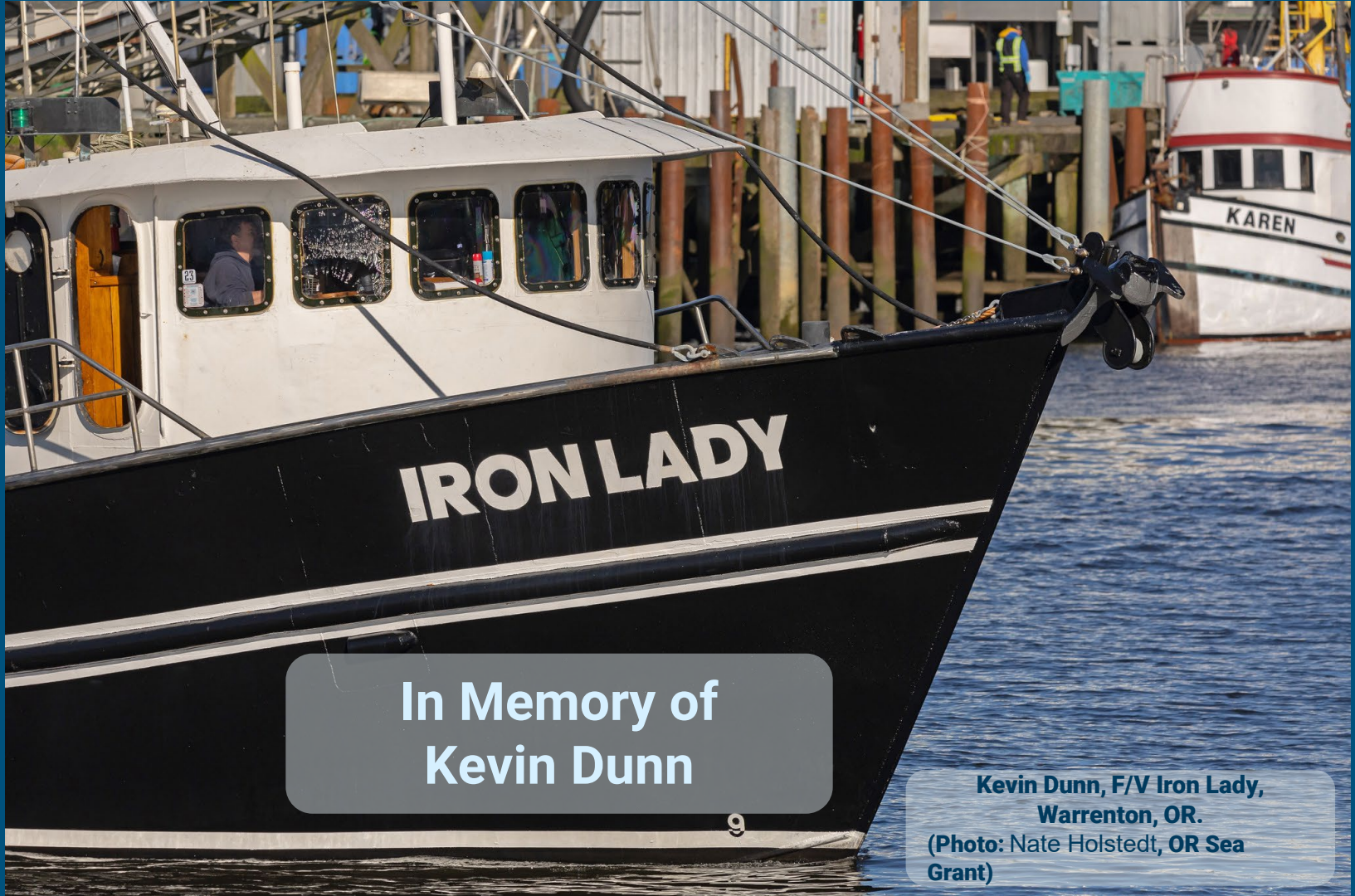
Table 3. Highlights of the GMT supported 2027-28 management measures for the California recreational fishery. GMA = Groundfish Management Area, RCG = Rockfish, Cabezon, Greenling, SQ = Status Quo, fm = fathom.

| | |
|---|--|
| <i>Boat-Based Season</i> | |
| Rockfish and Lingcod Season Structure Options | |
| CAD Option 3 (SQ) | <p><u>Northern, Mendocino, San Francisco, Central GMAs:</u></p> <ul style="list-style-type: none"> Apr – Dec: All depths <p><u>Southern GMA:</u></p> <ul style="list-style-type: none"> Apr – Jun: All depths Jul – Sep: Inshore of the 50 fm RCA Oct – Dec: Offshore of the 50 fm RCA; retention of nearshore rockfish prohibited |
| CAD Option 4 | <p><u>All GMAs:</u></p> <ul style="list-style-type: none"> Jan – Dec: All depths |
| GAP-Requested Option (See Supplemental CDFW Report 1) | <p><u>Northern, Mendocino, San Francisco, Central GMAs</u></p> <ul style="list-style-type: none"> Apr – Dec: All depths <p><u>Southern GMA</u></p> <ul style="list-style-type: none"> Apr – Jun: All depths Jul – Nov: Inshore of the 50 fm RCA line Dec: All depths |
| Cabezon | Open year-round at all depths (decouples the RCG complex) |
| Greenling | Open year-round at all depths (decouples the RCG complex) |
| <i>Groundfish Bag Limits</i> | |
| Rockfish | 10 fish limit in aggregate (applies only to <i>Sebastes spp.</i>) |
| <i>Vermilion/sunset rockfish</i> | <p><u>Northern GMA:</u> Reduce from 4 fish to 2 fish</p> <p><u>Mendocino, San Francisco, Central, Southern GMAs:</u> 2 fish (SQ)</p> |
| <i>Canary rockfish</i> | 2 fish (SQ) |
| <i>Copper rockfish</i> | 1 fish (SQ) |
| <i>Yelloweye Rockfish and Cowcod</i> | 1 fish during Dec, or, 1 fish during Apr |
| <i>Quillback rockfish</i> | Prohibited (SQ) |
| <i>Bronzespotted rockfish</i> | Prohibited (SQ) |
| Cabezon | 10 fish (decouples the RCG complex) |
| Greenling | 10 fish (decouples the RCG complex) |

California Recreational (AIC#20)

Summary

- See Table 3 in Supplemental GMT Report 3



**In Memory of
Kevin Dunn**

**Kevin Dunn, F/V Iron Lady,
Warrenton, OR.
(Photo: Nate Holstedt, OR Sea
Grant)**

El fin!

