



**NOAA
FISHERIES**

Agenda Item G.1.b
Supplemental NMFS Science Center Report
September 2025

Science Center Activities

September 22, 2025

Craig Russell
Northwest Fisheries Science Center



Overview

- Surveys Update
- NMFS West Coast Surveys Storymap
- Mortality Reports

2025 West Coast Groundfish Bottom Trawl Survey

Pass 1 - Completed

- Survey (US CAN to US Mex): May 18 - Jul. 15
- Demobilization (Newport, OR): Jul. 22 - 23
- F/V Last Straw and F/V Excalibur

Pass 2 - Underway

- Aug 24 - Oct 21
- F/V Ms. Julie and F/V Noah's Ark



On the chartered F/V Excalibur departing Newport early June 3, 2025 for the start of leg 2 of the groundfish bottom trawl survey, following a weather delay. Photo: NOAA, John Harms.

2025 So. CA Shelf Rockfish Hook & Line Survey

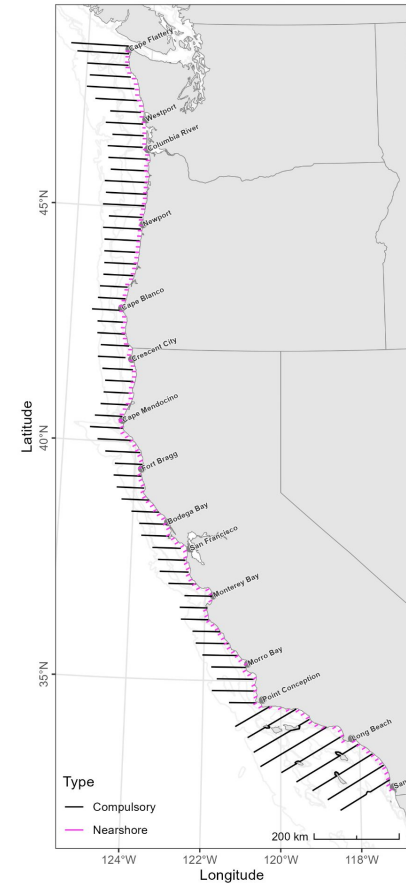
- Mobilization Sep 19-20 Oxnard CA
- **Underway Sep 21 through Oct 6, 2025**
 - **Leg 1 Sep 21 - 27**
 - Port Call Sep 28 - 29, Long Beach CA
 - **Leg 2 Sep 30 - Oct 6**
- 2025 Demobilization Oct 7, Long Beach CA
- Conducted with **3** vessels (Mirage, Aggressor, Toronado) from the local sportfishing industry



2025 Integrated West Coast Pelagics Survey (NWC, SWC, DFO) - June 11 - Sept 13

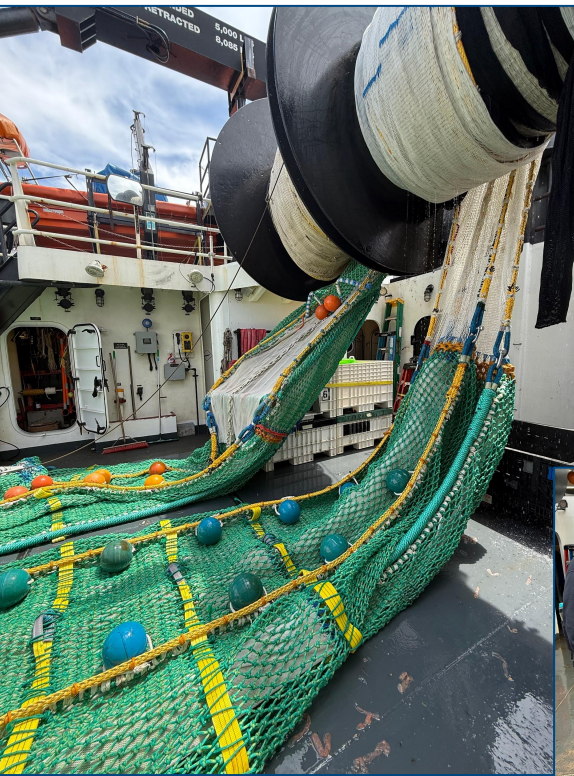
A robust fisheries-independent survey that collects data that informs sustainable Pacific hake and coastal pelagic fisheries, collects ecosystem data, and maintains the survey schedule.

- NOAA ship *Shimada* and Canadian ship *Franklin*
- U.S.-Mexico to Dixon Entrance, AK
- Acoustics, 24-hr trawling (midwater & surface) and environmental sampling/eDNA
- Using new [Multifunction Trawl System \(MFT\)](#)
- **Survey Legs concluded on Sept 14**
- Research Leg underway 9/18-9/30 (additional data collection for AWT/MFT net comparisons)



Map of 2025 transects planned for *Shimada*

Integrated West Coast Pelagics Survey Update



MFT and collaborators



Contact information, email sign up, and more:

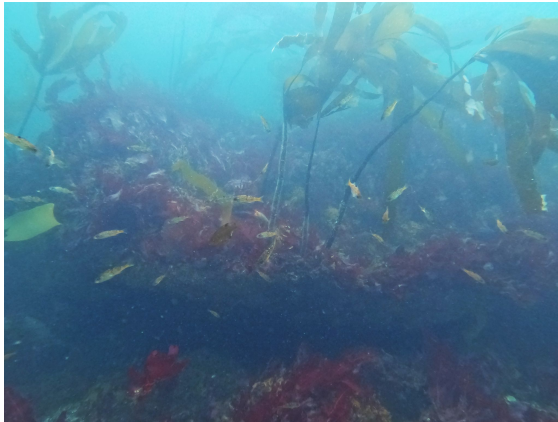
[Integrated West Coast Pelagics Survey | NOAA Fisheries](#)

On **Instagram**

- [@noaafisherieswestcoast](#)

2025 WA Coast Juvenile Rockfish Dive Survey

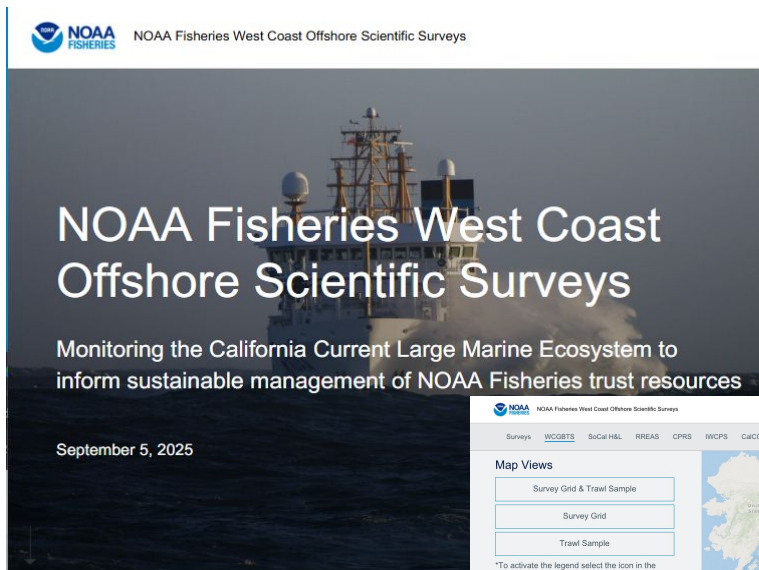
- 10th annual SCUBA survey of rockfish, lingcod, and other kelp forest species along the outer coast of Washington in OCNMS
- Abundance of young-of-the-year rockfishes was the highest since the banner year of 2016 ([webstory](#))
- Increase in large, healthy sunflower sea stars after wasting disease pandemic



NOAA Fisheries West Coast Offshore Scientific Surveys Story Map

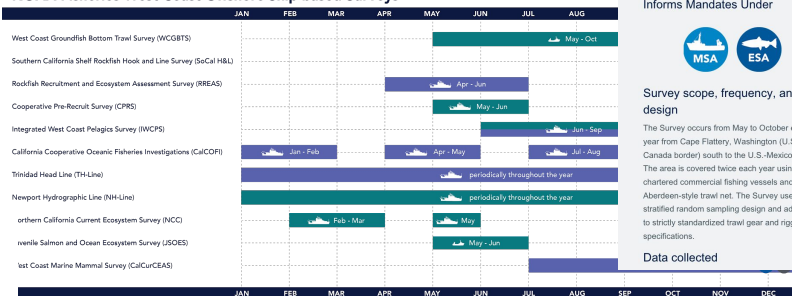
- Interactive access to information on:
 - Survey details and how data is used
 - Geospatial context
 - Data access points

Melissa Widas, PSMFC Author
 Curt Whitmire, NMFS Project Manager
 Caren Braby, PSMFC Program Manager
 Su Kim, NMFS Graphics



<https://arcc.is/1mq4be2>

NOAA Fisheries West Coast Offshore Ship-based Surveys

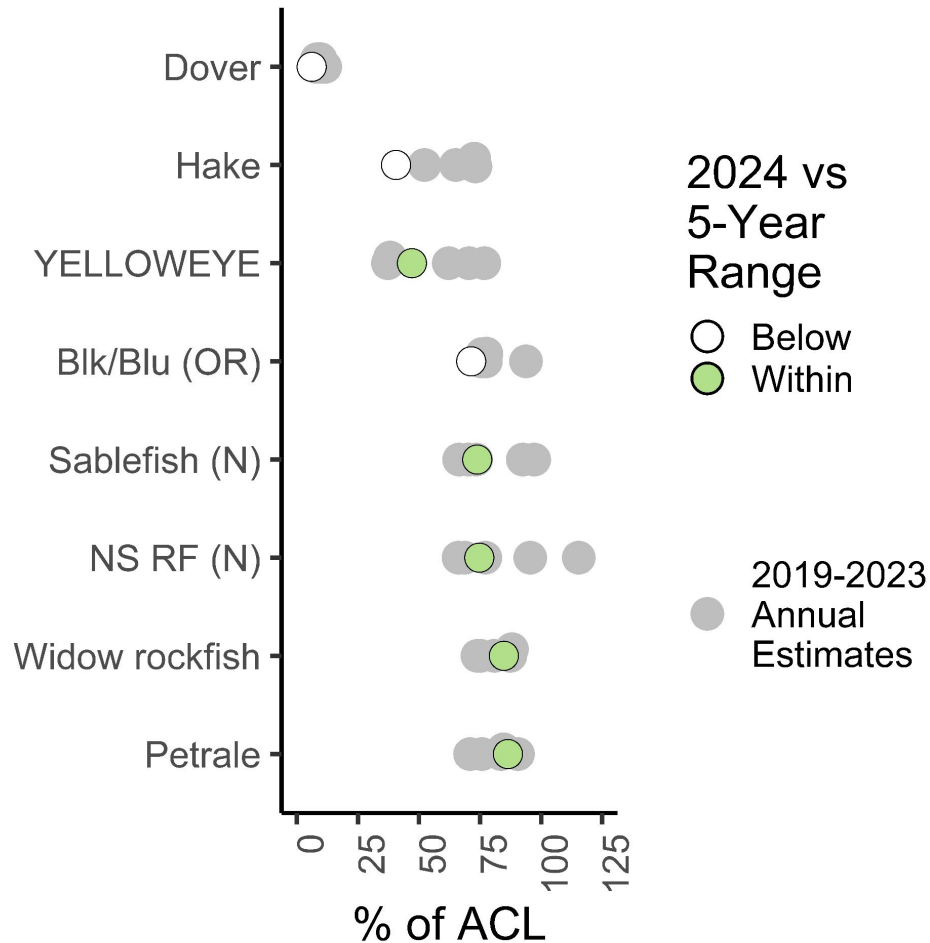


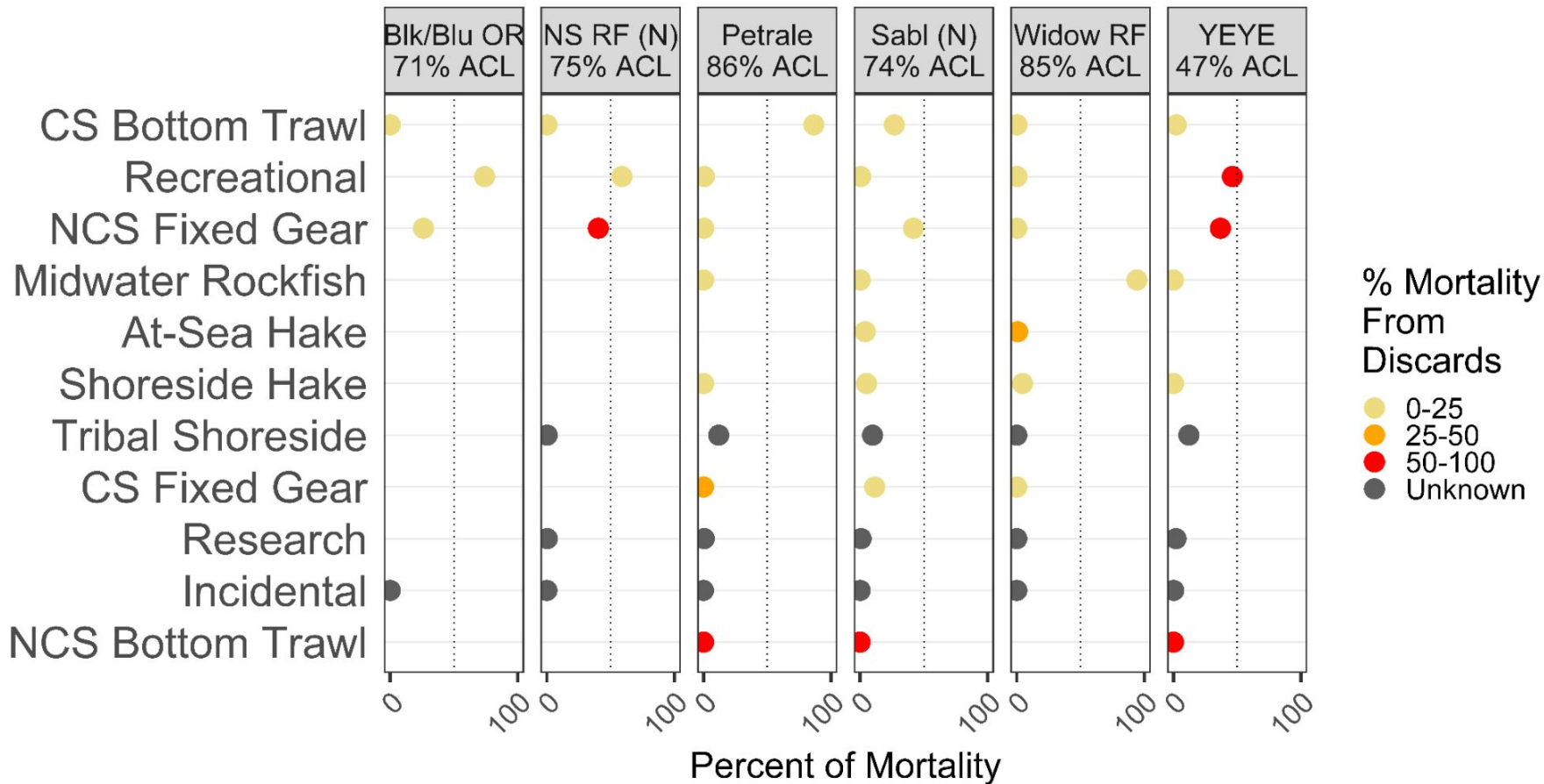

Estimated Discard and Catch of Groundfish Species in the 2024 U.S. West Coast Fisheries

Kayleigh A. Somers, Kate Richerson, Vanessa Tuttle, Jon McVeigh



NOAA
FISHERIES





Groundfish Expanded Multi-Year Mortality

https://connect.fisheries.noaa.gov/gemm_csv/

Last updated from R: 2025-08-22 18:46:08 • **Format:** csv • **API:** v1

Total estimated discard, discard with discard mortality rates (DMRs) applied in A-SHOP, EM, PacFIN, RecFIN, and WCGOP data for the years 2002 to 2023 for select species in the 2023 U.S. west coast fisheries. NOAA Fisheries, NWFSC (

Download data: [gemmdatcsv.csv](#)

► Raw metadata

Learn more about this pin at:

<https://doi.org/10.25923/mxc3-9934>

Questions?

Craig.Russell@noaa.gov



NOAA
FISHERIES