

INTERNATIONAL PACIFIC



HALIBUT COMMISSION

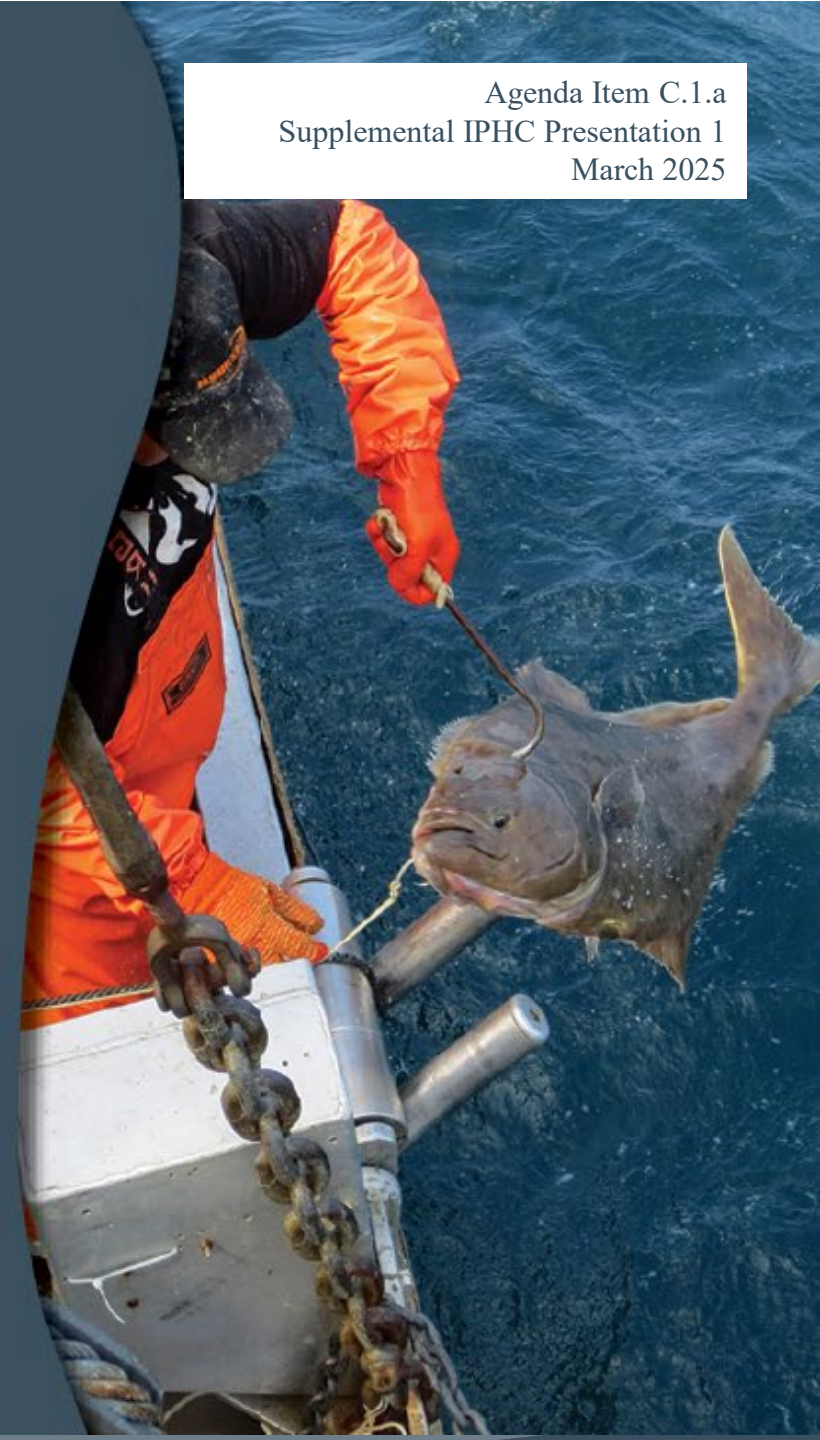
Outcomes of the 101st Session of the IPHC Annual Meeting (AM101)

PFMC meeting

6 March 2025

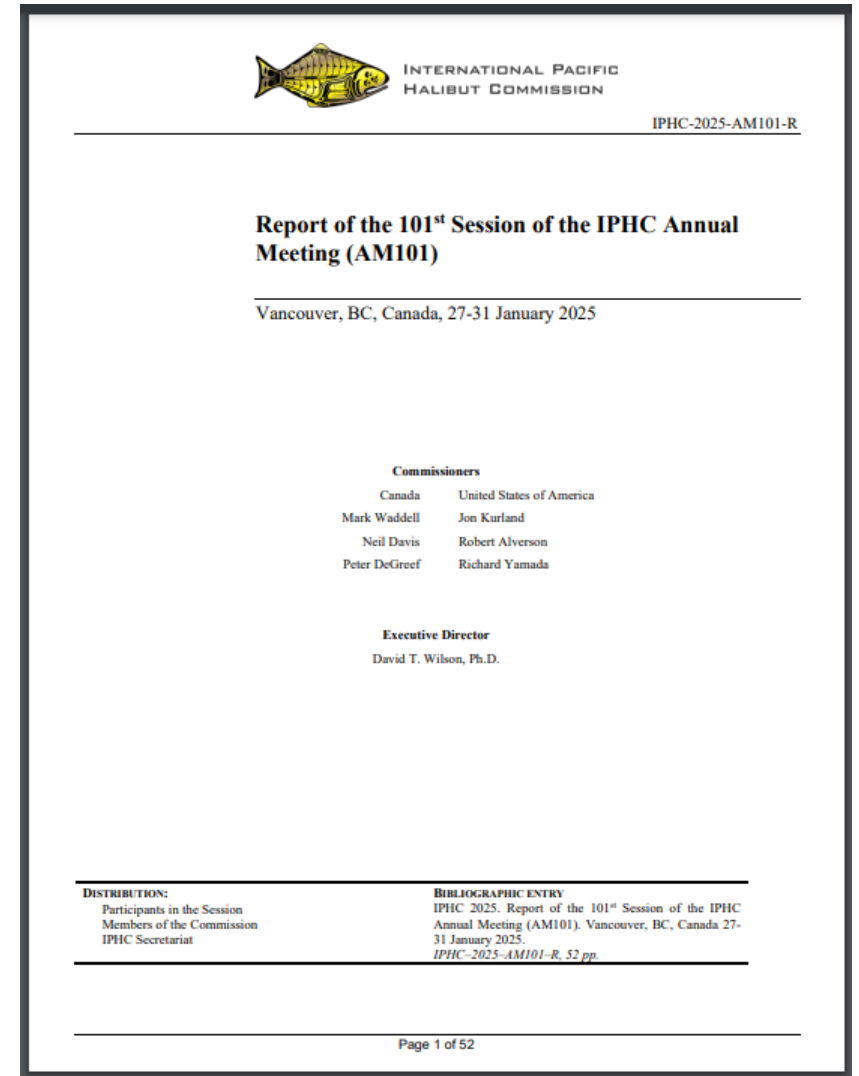
(B. Hutniczak, Fisheries Regulations and Data
Services Branch Manager)

Agenda Item C.1.a
Supplemental IPHC Presentation 1
March 2025



101st Session of the IPHC Annual Meeting (AM101)

- 27-31 January 2025
- Held in Vancouver, B.C., Canada (Hybrid)
- **186 attendees:** 6 Commissioners, 15 advisors/experts, and 165 members of the public (104 in-person and 61 remote)
- [AM101 report](#)
- AM101 webpage:
<https://www.iphc.int/meetings/101st-session-of-the-iphc-annual-meeting-am101/>



New Commissioner



- Mark Waddell was appointed as a new Head of the Canadian Delegation on 8 January 2025
- He became the Chairperson of the IPHC for the 101st Session of the IPHC Annual Meeting (AM101)
- Following the AM101, he will serve as the Vice-Chairperson of the IPHC for the next year
- The current Chairperson of the IPHC is Jon Kurland (USA)



2025 Adopted mortality limits (TCEYs)

IPHC Regulatory Area	Tonnes	Million Pounds	% change from 2024
Canada Total: 2B	2,472	5.45	-15.8%
USA: 2A	748	1.65	0.0%
USA: 2C	2,368	5.22	-9.8%
USA: 3A	4,119	9.08	-20.1%
USA: 3B	1,297	2.86	-17.1%
USA: 4A	608	1.34	-16.8%
USA: 4B	472	1.04	-16.8%
USA: 4CDE	1,397	3.08	-16.8%
USA: Total	11,009	24.27	-15.8%
Total: IPHC Convention Area	13,481	29.72	-15.8%

- **Coastwide decrease from 2024 = 15.76%**

- **Fishing intensity = F51%**

Detailed 2025 projections, by sector

	2A	2B	2C	3A	3B	4A	4B	4CDE	Total
Commercial discards	0.06	0.15	NA	NA	0.20	0.04	0.01	0.04	0.51
O26 Non-directed discards	0.06	0.31	0.05	0.26	0.17	0.29	0.13	1.41	2.69
Recreational	NA	0.03	1.01	0.88	0.00	0.01	0.00	0.00	1.93
Subsistence	NA	0.41	0.25	0.12	0.01	0.00	0.00	0.01	0.81
Total non-FCEY	0.13	0.90	1.31	1.26	0.39	0.34	0.14	1.47	5.93
Commercial discards	NA	NA	0.12	0.45	NA	NA	NA	NA	0.57
Recreational	0.62	0.68	0.72	1.48	NA	NA	NA	NA	3.49
Subsistence	0.02	NA	NA	NA	NA	NA	NA	NA	0.02
Commercial landings	0.89	3.87	3.07	5.89	2.47	1.00	0.90	1.61	19.71
Total FCEY	1.53	4.55	3.91	7.82	2.47	1.00	0.90	1.61	23.79
							<i>4C FCEY</i>	0.75	
							<i>4D FCEY</i>	0.75	
							<i>4E FCEY</i>	0.12	
TCEY	1.65	5.45	5.22	9.08	2.86	1.34	1.04	3.08	29.72
U26 Non-directed discards	0.01	0.04	0.00	0.25	0.11	0.13	0.01	1.35	1.90
Total	1.66	5.49	5.22	9.33	2.97	1.47	1.05	4.43	31.62



Limits for IPHC Reg. Area 2A

(2) The fishery limits resulting from the IPHC-adopted distributed mortality (TCEY) limits and the existing Contracting Party catch sharing arrangements are as follows, recognizing that each Contracting Party may implement more restrictive limits:**

IPHC Regulatory Area	Fishery limits (net weight)	
	Tonnes (t)	Million Pounds (Mlb)*
Area 2A (California, Oregon, and Washington)	694	1.53
Non-treaty directed commercial (south of Pt. Chehalis)	118	259,515*
Non-treaty incidental catch in salmon troll fishery	21	45,797*
Non-treaty incidental catch in sablefish fishery (north of Pt. Chehalis)	32	70,000*
Treaty Indian commercial	236	520,700*
Treaty Indian ceremonial and subsistence (year-round)	7	14,800*
Recreational – Washington**	129	284,042*
Recreational – Oregon**	134	295,367*
Recreational – California**	18	39,780*

* Allocations resulting from the IPHC Regulatory Area 2A Catch Share Plan are listed in *pounds*.

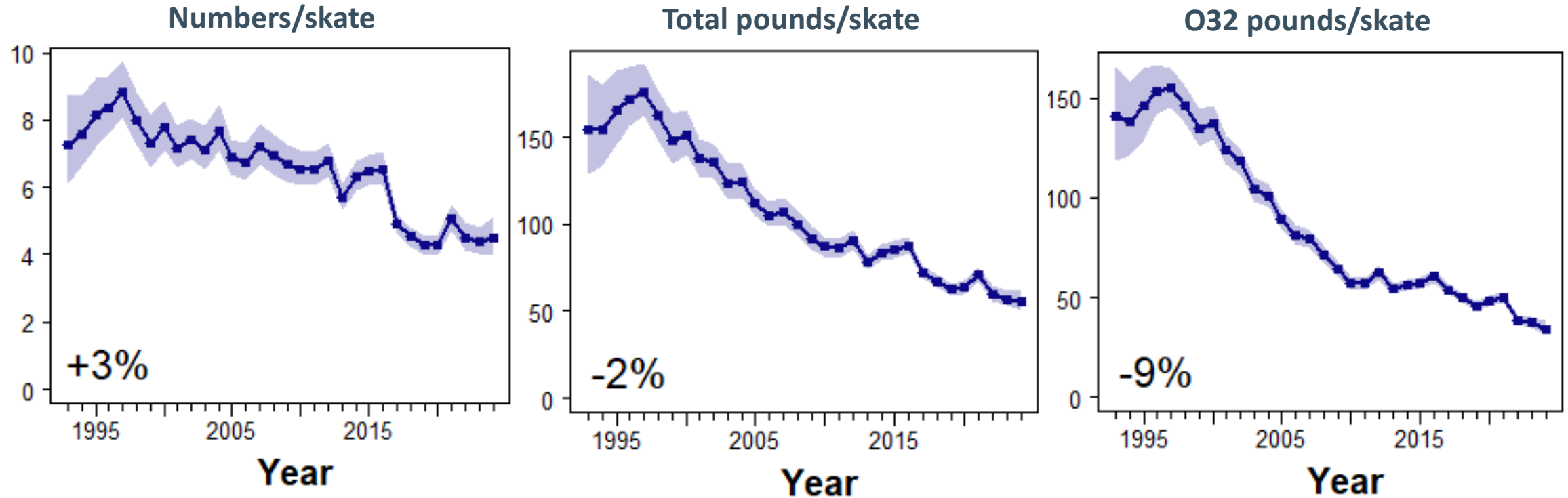
** In IPHC Regulatory Area 2A, the USA (NOAA Fisheries) may take in-season action to reallocate the recreational fishery limits between Washington, Oregon, and California after determining that such action will not result in exceeding the overall IPHC Regulatory Area 2A recreational fishery limit and that such action is consistent with any domestic catch sharing plan. Any such reallocation will be announced by the USA (NOAA Fisheries) and published in the Federal Register.

[IPHC Fishery Regulations \(2025\)](#) were published on 5 February 2025



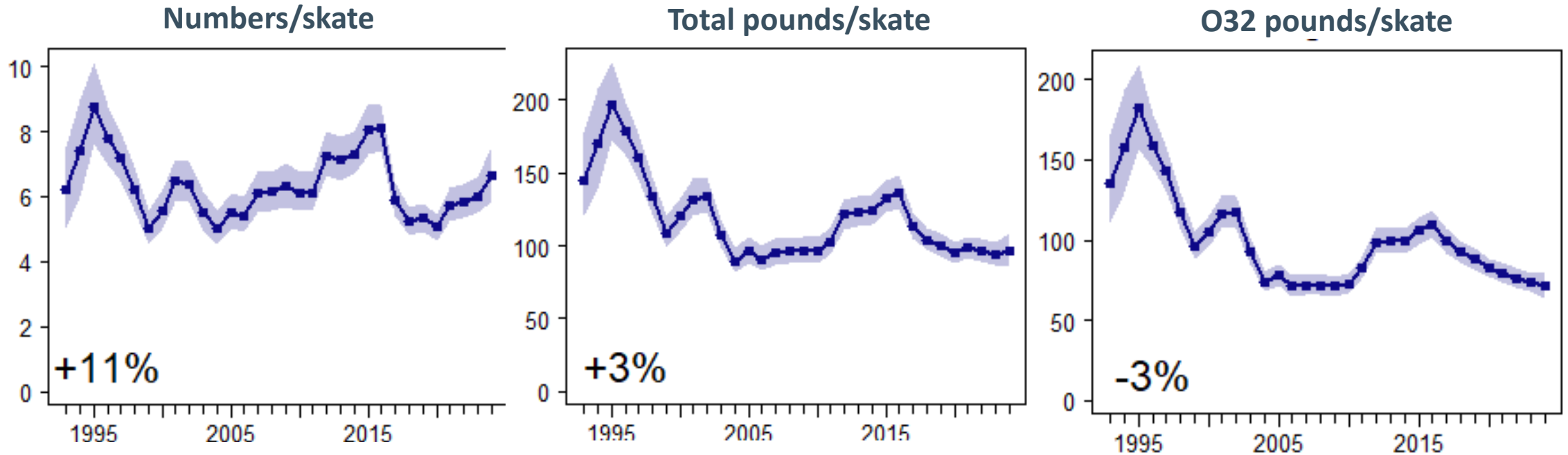
Coastwide FISS data trends

- Mixed trends: numbers per skate increasing, but weight-based metrics declining



Trends in Biological Region 2

- Region 2 continues to show the most positive trends in the stock

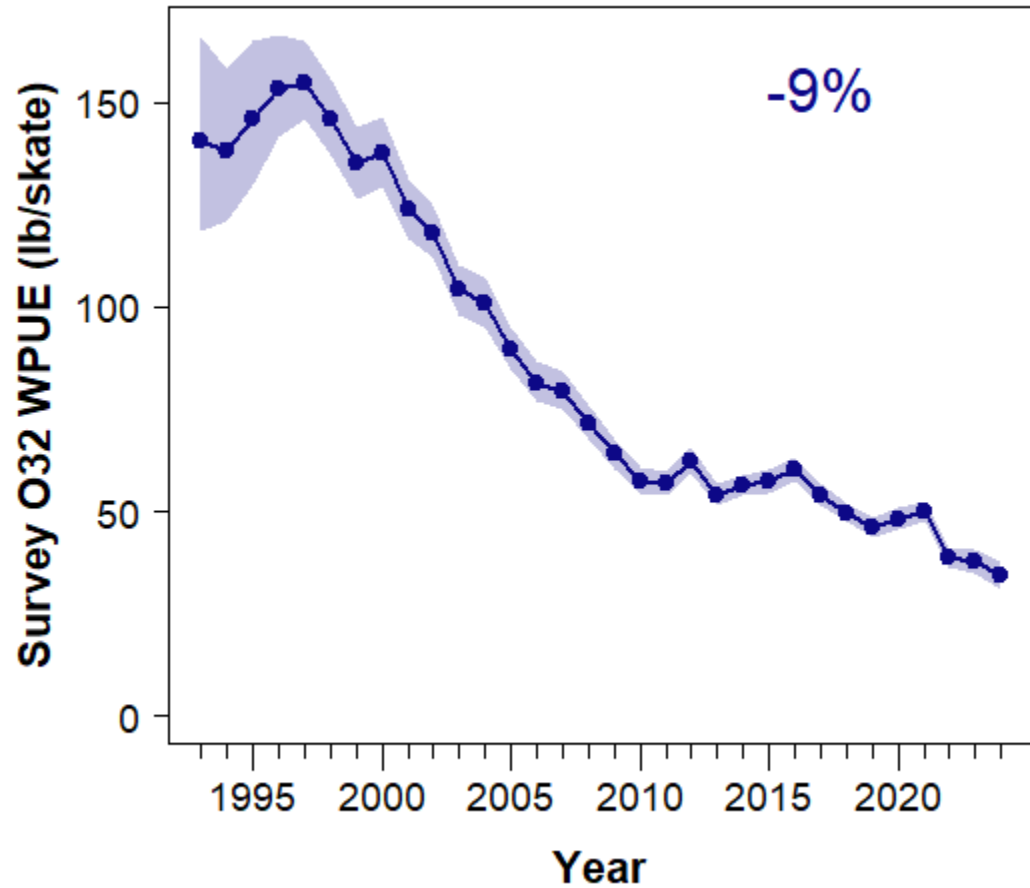


- No specific conservation concern associated with a constant TCEY in 2A

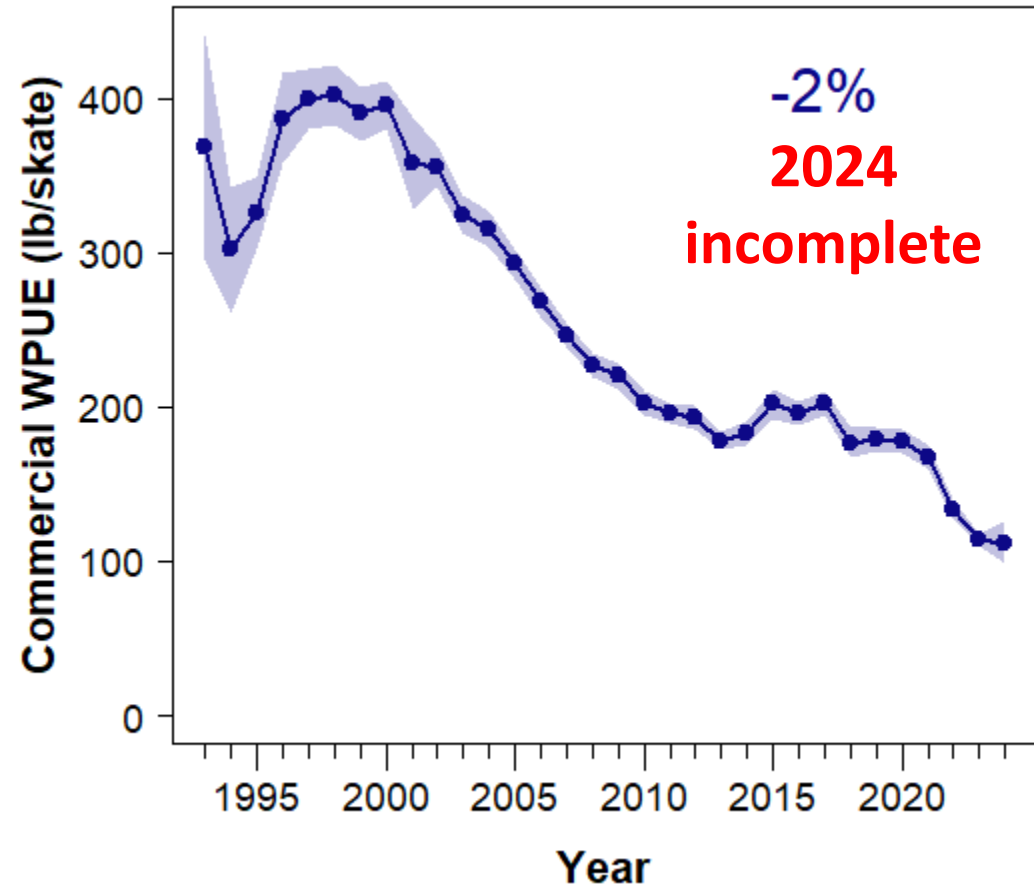


O32 FISS and fishery trends

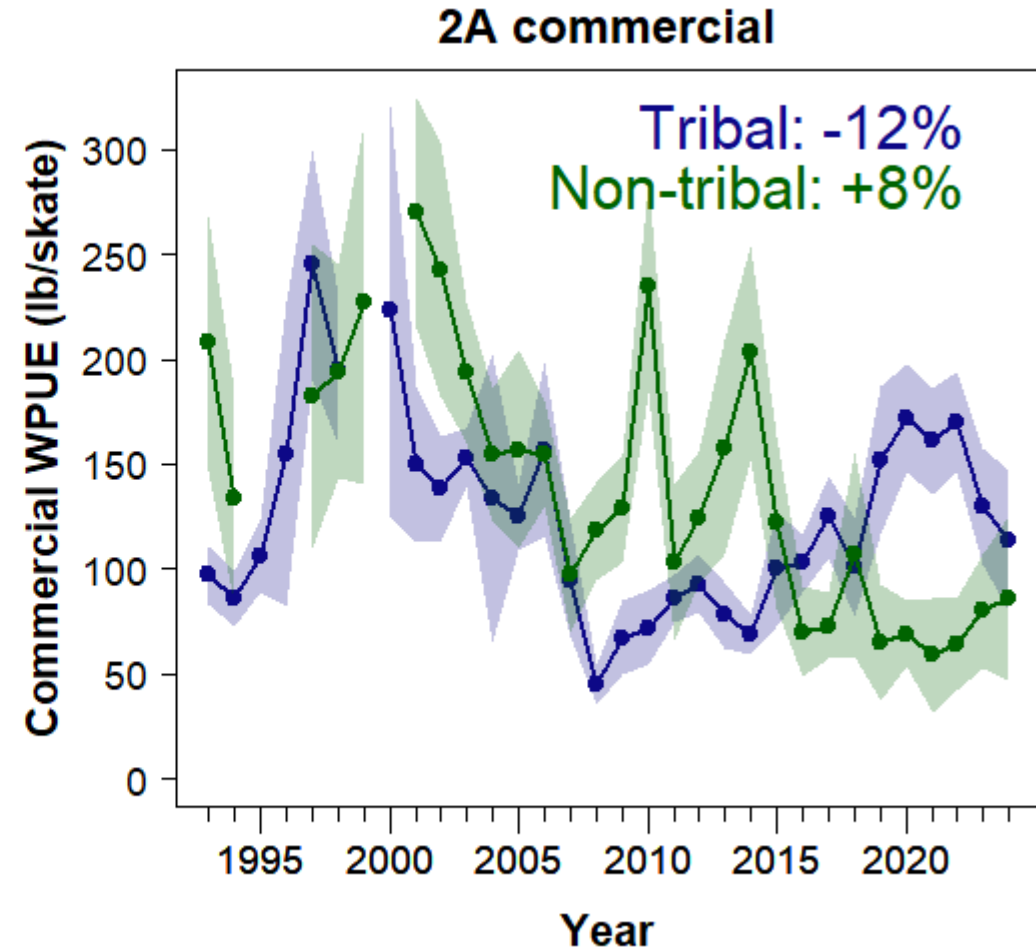
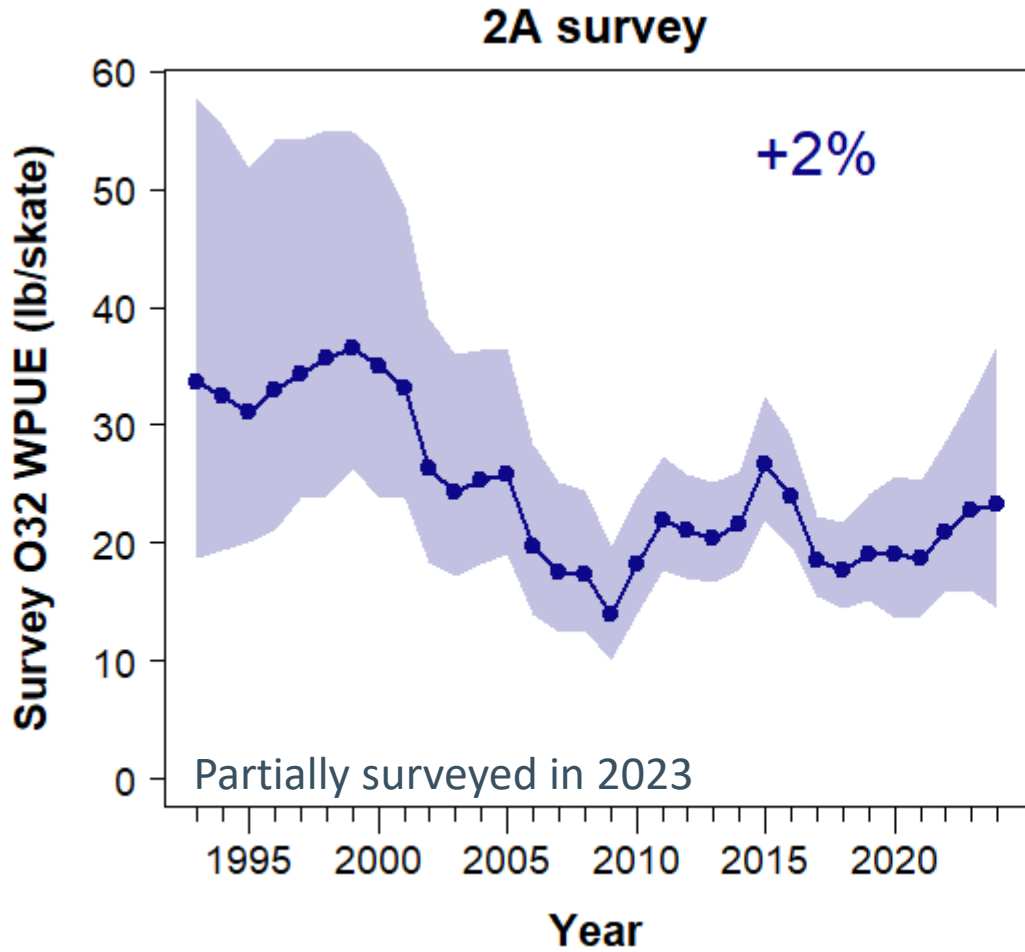
Coastwide survey



Coastwide commercial



Trends in IPHC Reg. Area 2A



Summary of stock assessment results

- **Fishing mortality:** decreased from 2023 to 2024
- Continued shift from older to younger fish in both the fishery and FISS
- FISS and fishery indices at historical low levels
- Fishery data (CPUE) again had the largest effect on the stock assessment results, decreasing the 2024 spawning biomass by 17% compared to last year's assessment
- The stock remains at a low productivity level due to low weight-at-age and low recruitment through at least 2016
- The spawning biomass is estimated to be above $B_{30\%}$ and the fishing intensity lower than $F_{43\%}$



Projection summary

- Adopted mortality limits for 2025 correspond to:
 - a 25% probability of stock decline through 2026;
 - a 29% probability of stock decline through 2028; and
 - A fishing intensity of $F_{51\%}$, lower than the fishing intensity estimate for 2024.
- Poor recruitment continues and is likely to limit short-term yields even if strong year-classes emerge in the future.
- Projections rely on the still uncertain 2016 year-class.



2025 Commercial Fishing Periods

The Commission **ADOPTED** fishing periods for 2025:

Commercial fishing for Pacific halibut in all IPHC Regulatory Areas may begin no earlier than **06:00 local time on 20 March** and must cease at **23:59 local time on 7 December**.

NOTE: With the transition of management authority of the IPHC Regulatory Area 2A non-tribal directed commercial Pacific halibut fishery from the IPHC to the PFMC and NOAA Fisheries (87 FR 74322), the IPHC no longer needs to consider setting dates for the 2A non-tribal directed commercial fishery. The dates set by NOAA Fisheries must be set within the overall commercial fishing period dates.



2025 Fishery-Independent Setline Survey (FISS)

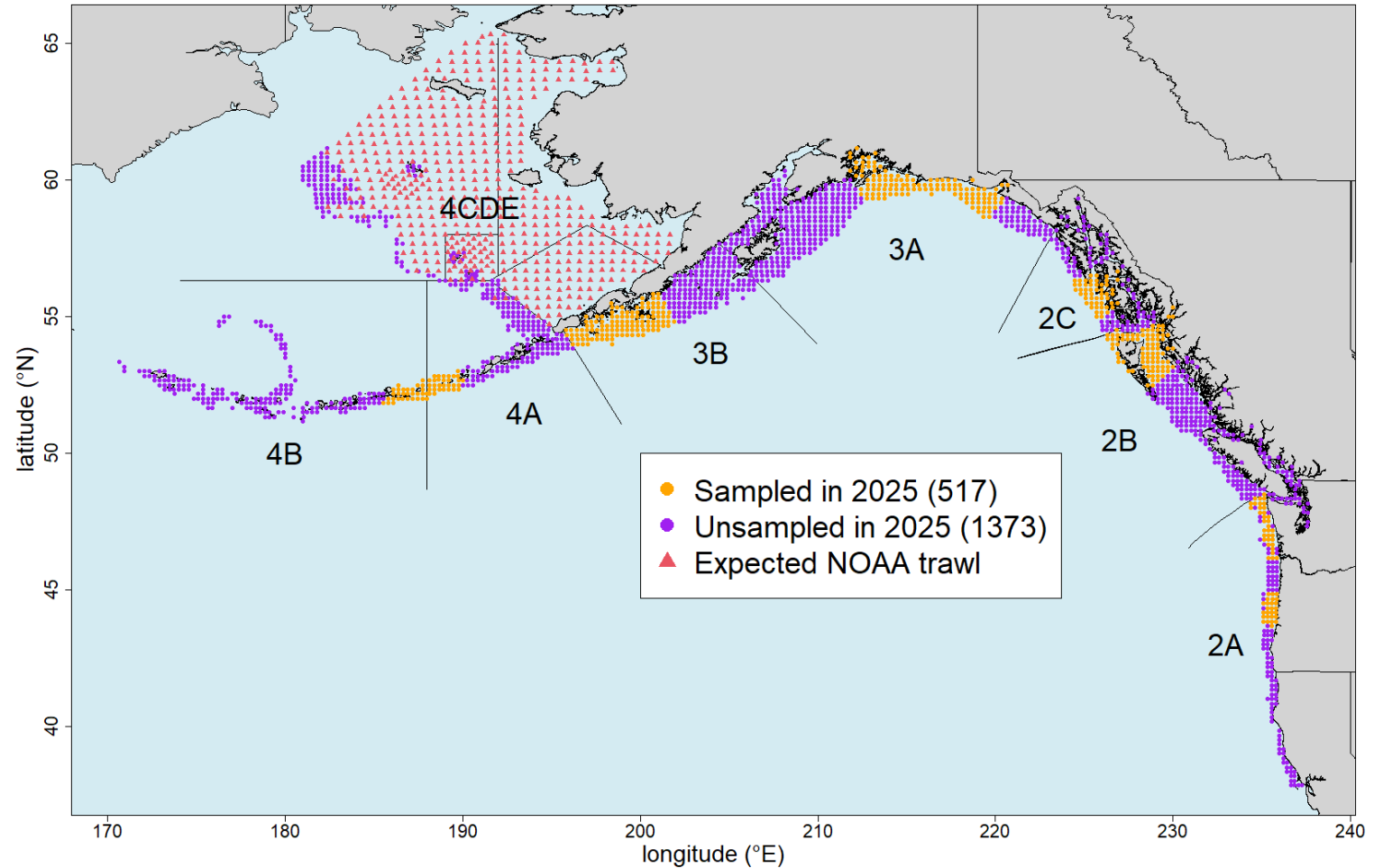
- In recent years, financial constraints due to reduced catch rates, lower sales prices and higher costs have led to the implementation of FISS designs with reduced spatial footprints
- FISS effort has been concentrated in IPHC Regulatory Areas 2B, 2C, 3A and 3B, with limited sampling in other areas in 2023-24
- The 2025 FISS design was decided at [SS014](#):
 - One charter region in each of 2B and 2C
 - Supplementary funding for
 - **60 stations in 2A (including most of Washington and part of Oregon)**
 - 30 stations each in 4A and 4B
 - Two charter regions in each of 3A and 3B, each previously sampled in 2022-23, and selected to reduce the bias risk over the short term
 - The projected deficit is to be covered by a transfer from the IPHC Reserve Fund of \$1,000,000.



Commission decision for 2025 FISS

The Commission made a final decision via inter-sessional agreement ([IPHC-2024-CR-030](#) and [IPHC-2024-CR-031](#)).

Implementing this design depends on successful recruitment of charter vessels.



Management Strategy Evaluation

- The IPHC continues MSE work with support of the Management Strategy Advisory Board (MSAB)

The Commission **REQUESTED** that the Secretariat facilitate informal intersessional workshops, consisting of Commissioners and key advisors, to review and consider the **draft Harvest Strategy Policy, for adoption in mid-to-late 2025.**

- HSP workshop will occur on 23 April

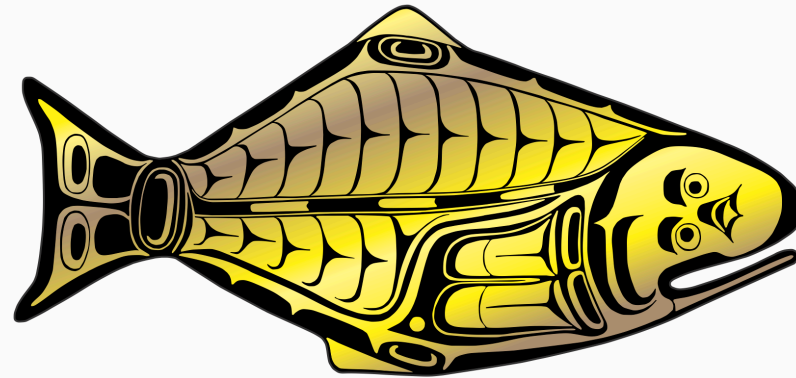


Looking ahead

- Management Strategy Advisory Board (MSAB21): 13-15 May, Juneau, AK
- Scientific Review Board (SRB026): 10-12 June, Seattle, WA
- Scientific Review Board (SRB027): 23-25 September, Seattle, WA
- Interim Meeting (IM101): 24-25 November (virtual)
- 102nd Session of the IPHC Annual Meeting (AM102): 19-23 January 2026 in Bellevue, WA



INTERNATIONAL PACIFIC



HALIBUT COMMISSION

<https://www.iphc.int/>



IPHC Reg. Area 2A data overview (2024)

IPHC Regulatory Area	Fishery limit / projection (net weight)		Mortality to date (net weight)		Pct attained
	Tonnes (t)	Pounds (lb)	Tonnes (t)	Pounds (lb)	(%)
Area 2A (California, Oregon, and Washington)	748.43	1,650,000	649.98	1,432,971	86.8
<i>Domestic mortality limits (FCEY)</i>					
Non-treaty directed commercial fishery	113.10	249,338	107.58	237,164	95.1
Non-treaty incidental catch in salmon troll fishery	19.96	44,001	13.77	30,363	69.0
Non-treaty incidental catch in sablefish fishery ²	22.68	50,000	15.70	34,624	69.2
Treaty Indian commercial fishery	224.20	494,280	220.24	485,554	98.2
Treaty Indian ceremonial and subsistence (year-round)	9.17	20,220	6.71	14,800	73.2
Recreational – Washington	131.61	290,158	132.67	292,482	100.8
Recreational – Oregon	128.72	283,784	91.49	201,695	71.1
Recreational – California	17.34	38,220	9.27	20,427	53.4
<i>Projections (non-FCEY)</i>					
Directed commercial discard mortality	49.90	110,000	26.01	57,335	52.1
Recreational discard mortality	--	--	2.05	4,528	--
Non-directed commercial discard mortality (O26)	36.29	80,000	24.49	54,000	67.5
<i>IPHC fishery-independent setline survey and research</i>	--	--	0.00	0	--
<i>Non-TCEY mortality</i>					
Non-directed commercial discard mortality (U26)	0.00	0	3.18	7,000	--

