



West Coast FY 2025 Priorities

Jennifer Quan
Regional Administrator

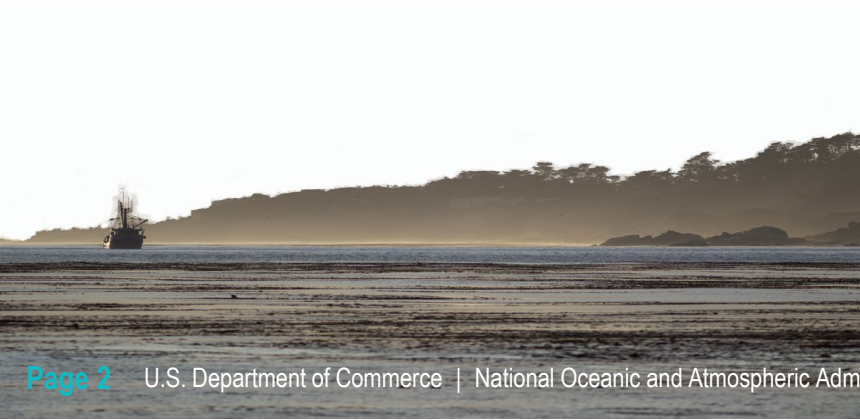
Kevin Werner
NW Science Director

Kristen Koch
SW Science Director

Pacific Fishery Management Council, November 14, 2024

Overview

- Inflation Reduction Act
- West Coast Region
- Northwest Fisheries Science Center
- Southwest Fisheries Science Center
- Aligning West Coast Priorities





Inflation Reduction Act



provides funding for:

- Councils
- Habitat
- Hatcheries
- Data Acquisition & Management
- Climate, Ecosystems, & Fisheries Initiative (CEFI)
- Pacific Salmon Science
- Facilities



West Coast Region



NOAA
FISHERIES



West Coast Region

FY24 Accomplishments

Sustainable Fisheries

- Reopening of groundfish areas
- Bluefin tuna rebound and allocation shift
- Responsible offshore wind energy development
- IRA/BIL hatchery funding

Recovery of Protected Species

- Klamath Dam removal
- Pacific Coast Salmon Restoration Fund (PCSRF)
- Resilient Columbia Basin Agreement

Organizational Excellence

- West Coast Geographic Strategic Plan
- Equity and Environmental Justice Implementation Plan





West Coast Region FY25 Priorities

- Harvest specifications and management measures
- Support climate ready fisheries
- Support fishing communities
- Fixed Gear Take Reduction Team
- Saltwater recreational angler engagement
- California Eelgrass Mitigation Policy
- Resilient Columbia Basin Agreement
- Responsible offshore wind/energy development
- Southern California Aquaculture Opportunity Areas



Northwest Fisheries Science Center



NOAA
FISHERIES



Northwest Fisheries Science Center

FY24 Accomplishments

Sustainable Fisheries

- Completed the full slate of West Coast fisheries surveys supporting stock assessments
- Developed and tested new sampling methods and gear and advanced the FY25 Integrated West Coast Pelagics Survey design
- Published California Current Ecosystem Status Report, among other annual reports
- Conducted annual Economic Data Collection program
- Aquaculture: Began implementing the Center's Aquaculture 5-10 Science Strategy

Recovery of Protected Species

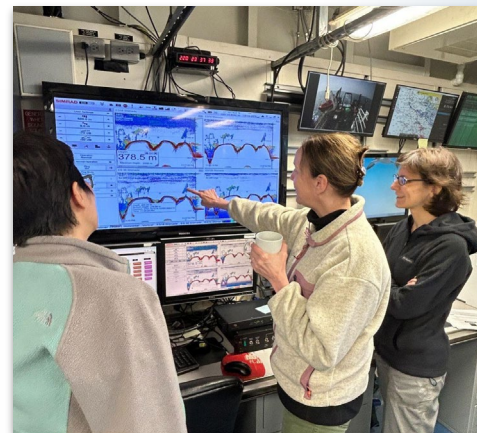
- Advanced salmon recovery science, with the help of new IRA hires
- Participated in 5-year Endangered Species Act (ESA) biological and status reviews and provided expert science advice for listing decisions
- Conducted science for Southern Resident killer whale recovery and ESA permitting

Understanding Impacts of Offshore Activities

- Published West Coast Offshore Wind Energy Science Plan

Organizational Excellence

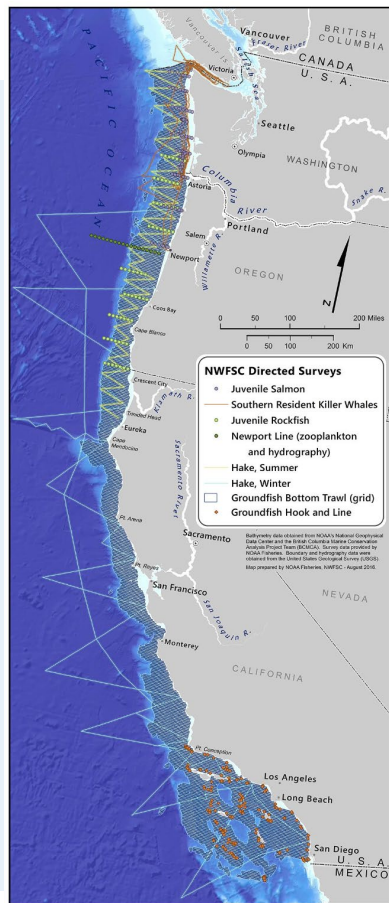
- 32 Positions filled, many supported by IRA funding





Northwest Fisheries Science Center

Full slate of NWFSC stock assessment surveys



NWFSC ANNUAL SURVEY	JAN	FEB	MAR	APR	MAY	JUN	JUL	AUG	SEP	OCT	NOV	DEC
Integrated West Coast Pelagics			trials in Mar			Jun - Sep						
Juvenile Salmon					May - Jun							
Juvenile Rockfish						Jun						
Groundfish Bottom Trawl					mid May - late Oct							
Groundfish Hook and Line									mid Sep - early Oct			
Newport Line						all year						
Southern Resident Killer Whales		2025 TBD mid Feb - early Mar										



Research vessels



Fishing vessels (Cooperative research)



NOAA
FISHERIES



Northwest Fisheries Science Center

2023-24 California Current Ecosystem Status Report

NOAA California Current IEA Team

Presented to PFMCI
March 9, 2024



Core Team: Andrew Leising,
Mary Hunsicker, Greg Williams, Nick
Tolimieri, Lynn Dewitt,
Abigail Harley, Chris Harvey

**Contributions from > 90 individuals
23 different agencies/institutions**

<https://www.pcouncil.org/documents/2024/02/agenda-item-h-1-a-cciea-team-report-1-2023-2024-california-current-ecosystem-status-report-electronic-only.pdf/>





Northwest Fisheries Science Center

Salmon Science themes and their management applications



OUTPUTS

- Quantitative predation rates
- Toxicity thresholds
- Measures of genetics variability
- Indicators of ocean primary production
- Robust life cycle models

APPLICATIONS

- ✓ ESA consultations
- ↻ Scenario planning
- 🏠 Hatchery management
- ⚠ Risk assessment
- ➡ Management Strategies
- 🏗 Rebuilding & recovery



NOAA
FISHERIES



Northwest Fisheries Science Center

FY25 Priorities: science execution & innovation

Sustainable Fisheries

Data Collection (surveys and bycatch monitoring)

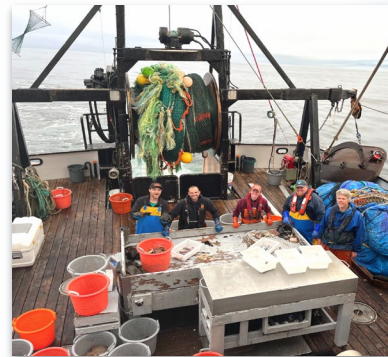
- Execute the first Integrated West Coast Pelagics Survey using new sampling methods and automated data classification
- Support NMFS activities on national coordination to optimize our fishery-independent sample and data collection, analysis, and distribution enterprise and identify additional resources needed to meet current and future priorities
- Apply advanced technologies, enhance surveys, and integrate science capabilities from NMFS IRA Strategic Initiatives:
 - Data Modernization
 - Omics
 - Active Acoustics
 - Passive Acoustics
 - Uncrewed Systems (UxS)
 - Optical Systems and Autosamplers
 - Social Science
 - Remote Sensing

Stock assessments and Management Strategy Evaluations (MSEs)

- Continue to conduct surveys, stock assessments, economic analyses, & observation science annually

Aquaculture

- Work with tribes and industry to develop new technology, mitigate risk, enhance resilience to climate change, and reduce management uncertainty





Northwest Fisheries Science Center

FY25 Priorities: science execution & innovation

Ecosystem Based Fishery Management

- **Regional NOAA Climate Ecosystem and Fisheries Initiatives (CEFI)**
 - Implement the CEFI science plan on the West Coast in coordination and collaboration with SWFSC
 - Develop more climate-informed decision support tools by incorporating species and ecosystem data in stock assessment and management strategies
- **Understanding impacts of offshore activities**
 - Support WCR by providing data, maps, and scientific advice, including assessment of long-term impacts of OSWE.
 - Begin survey mitigation research to understand the impacts of OSWE development on survey operations and explore new survey, statistical design, and sampling methods

Recovery of Protected Species

- Complete listing process evaluation for Olympic Peninsula Steelhead
- Implement our Salmon Recovery Science Strategy through IRA and other funding
- Continue research and monitoring of Southern Resident killer whales

Organizational Excellence

- Prioritize a multi-year workforce plan that includes diversity and succession considerations
- Continue steps to move the Montlake campus to a new, leased facility and make capital improvements to Manchester and Sand Point facilities



Southwest Fisheries Science Center



NOAA
FISHERIES

Southwest Fisheries Science Center

FY24 Accomplishments

Sustainable Fisheries

Data Collection (surveys and bycatch monitoring)

- California Current Ecosystem for Coastal Pelagic Species, 4 CalCOFI surveys
- 42nd annual rockfish recruitment and ecosystem assessment surveys
- Advanced efforts related to use of shadowgraph gliders in CCLME as part of the REFOCUS project

Stock Assessment and Management Strategy Evaluations (MSEs)

- Stock assessments - CPS, HMS, groundfish, salmon
 - Benchmark assessments on Pacific sardine, Pacific bluefin, and shortfin mako
 - Copper and Black rockfish (in collaboration with NWFSC)
 - Completed California salmon stock assessments and prepared for a post-dam removal revision of the Klamath River fall Chinook conservation objective
- Completed an economic analysis for Southern California Aquaculture Area of Opportunity
- 2023-24 California Current Ecosystem Status Report (ESR) delivered to the PFMC



Southwest Fisheries Science Center

FY24 Accomplishments

Protected Species Recovery

- Conducted California Current Marine Mammal Assessment Survey (Phase 1)
- Conducted California-wide egg thiamine surveillance for salmonids at all hatcheries in CA
- Conservation Aquaculture: Successful captive propagation and out-planting support for white abalone restoration activities

Understanding impacts of offshore activities

- Provided subject matter expertise on offshore wind energy development including information on sea turtle and marine mammal distribution
- Research of finfish species (e.g. *Seriola* spp.) to assess aquaculture risks.

Staffing updates

PFMC Council Committees:

- 6 positions filled, including Michael O'Farrell as STT Chair



Southwest Fisheries Science Center

FY25 Priorities

Sustainable Fisheries

Data Collection (surveys and bycatch monitoring)

- 2025 Integrated West Coast Pelagics Survey and an environmental data collection survey
- CalCOFI surveys (4 seasons)
- 43rd Rockfish recruitment and Ecosystem Assessment survey
- Ecosystem and Wind Impact Monitoring (ECOSWIM) glider survey
- Bycatch monitoring and identification in the CA Current Large Marine Ecosystem (CCLME)
- California Current Ecosystem Marine Mammal survey (Phase 2)
- Continue implementing advanced technologies to Reduce ship time

Stock assessments and Management Strategy Evaluations (MSEs)

- Update assessment for Pacific sardine and catch-only update assessment for Pacific mackerel
- MSE for Bluefin tuna
- Assess status of chilipepper and quillback rockfish
- Complete California salmon stock assessments
- Assist WCR with issues arising from the aftermath of removing impassable dams on the Klamath River



Southwest Fisheries Science Center

FY25 Priorities

Protected Species Recovery

- **Recovery Plan research actions for ESA-listed species**
 - Pacific Salmon: Sacramento River winter run Chinook & Central CA Coast coho
 - Pacific leatherback turtles & humpback whales
 - White abalone - Captive propagation and out-planting support for White Abalone restoration
- **Whale and sea turtle entanglement: CCLME risk assessments and stranding response**

Ecosystem Based Fisheries Management (EBFM)

- **Annual Ecosystem Status Report to the Council**
 - California Current Integrated Ecosystem Assessment (CCIEA) and Ecosystem Status Report (ESR)
- **NOAA Climate, Ecosystems, and Fisheries Initiative (CEFI)**
 - Implement the NOAA Fisheries Climate Science Strategy
 - West Coast CEFI Decision Support Team (DST)
- **Understanding impacts of offshore activities**
 - Offshore wind energy development- effects on resources and protected species.

Organizational Excellence

- Maintain and support SWFSC Council AB appointments





West Coast Aligned Priorities

Sustainable Fisheries

- Enhance stock assessments and management in response to a changing climate
- Strengthen data collection including surveys, bycatch monitoring
- Implement harvest specifications and management measures
- Support the NOAA Climate, Ecosystems, and Fisheries Initiative
- Support responsible offshore development, including wind energy and aquaculture

Protected Species Recovery

- Advance recovery of protected species
- Reduce fisheries bycatch and whale entanglement
- Protect and restore critical habitat

Organizational Excellence

- Improve diversity, equity, inclusion, and accessibility within our workforce and workplace, and across the communities we serve
- Engage with communities, tribes, and partners to carry out our west coast regional equity and environmental justice implementation plan

