

# Agenda Item E.7.a Supplemental GMT Report 2

Action Items #2 & 3  
Area Management  
Measures & Off-the-Top  
Deductions

# Action Item #2 - Area Management Measures

---

## Updates to Selected Rockfish Conservation Area (RCA) Coordinates

### ~~1. "New" Rittenberg Bank Yelloweye RCA Discussion~~

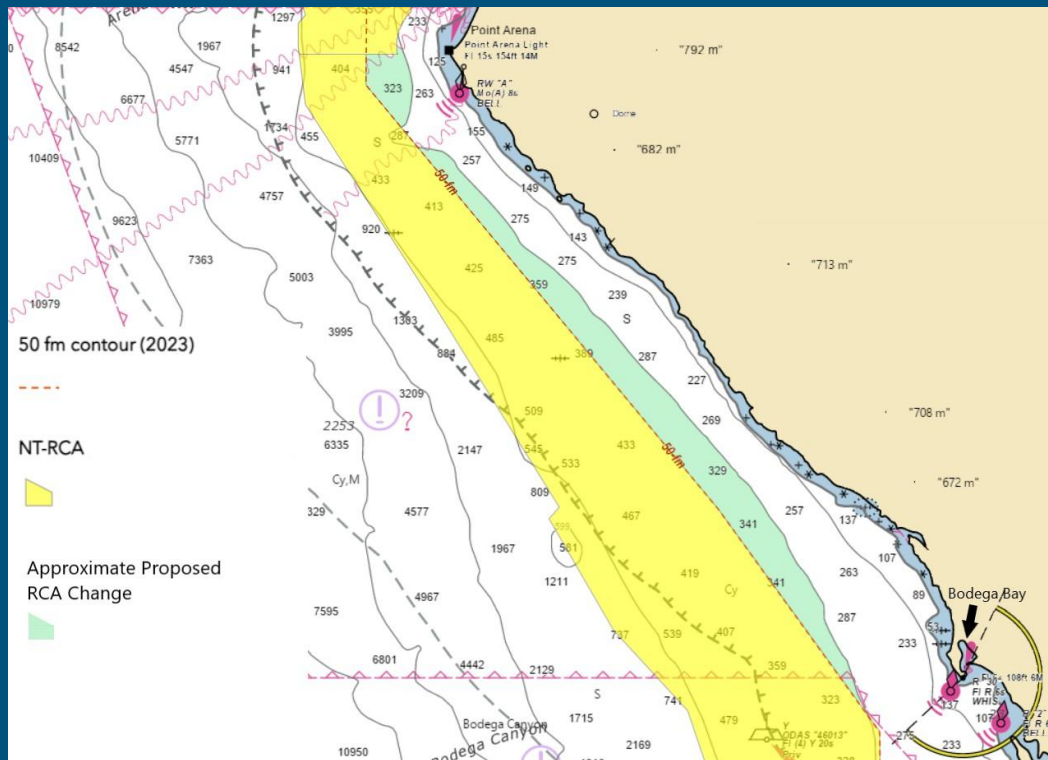
- 1.1. Rescinded at GAP request
- 1.2. The GMT finds this appropriate, as waypoint changes are intended to more accurately reflect bathymetry and should not be used to address conservation concerns.

### 2. CDFW proposed minor waypoint modifications to the 50 fm RCA boundary line between Pt. Arena and Bodega Bay

# 50 fm RCA Boundary Line Changes

- G.6.a, Supplemental CDFW Report 1, September 2023
- Approximately 3-4 waypoint modifications between Pt. Arena and Bodega Bay
- The current 50 fm RCA line diverges from the corresponding 300 ft bathymetry line by roughly 2 to 3 miles in this area.

**The GMT recommends moving forward with analysis of these minor RCA line changes proposed by CDFW.**



# Action Item # 3--Off-the-Top Deductions

---

- Amount taken from the ACL to account for sectors the Council does not actively manage
  - Tribal, research, incidental open access, & EFPs
- Want to set high enough to allow those sectors to proceed without endangering the ACL



# Tribal

---

- Based on the request from the tribes, which will allow them to manage the expected mortality in their upcoming fisheries
- Agenda Item E.7., Supplemental Tribal Report 1
  - Requested set-asides are consistent with the off-the-top deductions requested by the tribes during the 2023-24 biennial specifications process
- **The GMT recommends adopting the Tribal specified set-asides, as outlined in their report**

# Research & IOA Set-Asides

---

- Historically, these have been based on long-term maximum or historic average mortality (starting in 2003)
- Many of these long term maximums are not reflective of recent trends in mortality
  - For example, the starry flounder IOA set-aside in 2023 was 45.71 mt. This was from a high in 2005. The 10-year rolling maximum is 14.13 mt in 2019, with most years in the last decade below 8 mt.
- GMT proposes using a 10-year rolling maximum to determine future Research & IOA set-asides, except in certain instances as described in E.7.a Supplemental GMT Report 2
  - The default research and IOA set-asides for several stocks will therefore change from 2023-24 to 2025-26

# Research

- Includes NMFS trawl survey, IPHC longline survey, other federal & state research
- GMT identified 5 stocks or management units for which the 2025-26 set-aside value will decrease, compared to 2023-24 values, based on the new rolling 10-year maximum methodology. 9 other stocks or management units will increase, unrelated to new methodology.
- Full table detailed in E.7.a. Supplemental GMT Report 2. Those stock for which the research set-aside decreases is detailed below.

<b>Stock or Management Unit</b>	<b>Max Research Mortality 2013-22 (mt)</b>	<b>2023 Set-aside (mt)</b>	<b>GMT Recommendation for 2025-2026 (mt)</b>
English sole	8.01	17	8.01
Pacific cod	0.75	5.47	0.75
Shortspine thornyhead south of 34° 27' N. lat.	0.49	0.71	0.49
Nearshore rockfish south	0.74	2.68	0.74
Other fish	0.14	6.29	0.14

# Research - cont.

- The GMT recommends the Council use the rolling 10-year maximum of research mortality to set research set-asides in 2025-26, except for canary, cowcod, California quillback, and yelloweye rockfishes, for which the GMT recommends set-asides that diverge from the rolling 10-year maximum

Stock or Management Unit	Max Research Mortality 2013-22 (mt)	2023 Set-aside (mt)	GMT Recommendation for 2025-2026 (mt)
Canary rockfish	19.06	10.08	10.08
Cowcod	0.63	10	10
Quillback rockfish (California)	-	-	0.1
Yelloweye rockfish	1.49	2.92	2.92



# Incidental Open Access

- Directed P. halibut, CA. halibut, pink shrimp, etc.
- Similar to research, Council historically adopted set-asides based on the max high catch, for most species
- GMT proposes using a 10-year rolling maximum to determine future IOA set-asides, except in certain instances as described in E.7.a Supplemental GMT Report 2
  - This results in decreases for 21 of the 42 IOA set-asides
  - Lingcod north and south of 40° 10' N. lat. and Pacific cod will increase, unrelated to new methodology
  - For 10 of the 42 IOA set-asides, the GMT recommends specific departures from the new methodology. (Table on Slide 10)

# Incidental Open Access- Specific Methodology Departures <sup>10</sup>

<b>Stock or Management Unit</b>	<b>Max Research Mortality 2013-22 (mt)</b>	<b>2023 Set-aside (mt)</b>	<b>GMT Recommendation for 2025-2026 (mt)</b>
Bocaccio south of 40° 10' N. lat.	5.47	2.52	2.18
Canary rockfish	19.29	2.83	2.83
Darkblotched rockfish	30.99	9.8	10.71
Longspine thornyhead north of 34°27' N. lat.	12.34	6.22	1.26
Petrale sole	12.31	11.1	4.38
Sablefish south of 36° N. lat	18.26	25	25
Widow rockfish	0.67	3.05	1
Nearshore rockfish north of 40°10' N. lat.	4.15	1.3	1.10
Slope rockfish south of 40°10' N. lat.	8.26	19.73	0.93
Yelloweye rockfish	7.37	2.66	3.86

# Exempted Fishing Permits

---

- Under Agenda Item E.6., council forwarded two EFPs for 2025-26
  - Neither EFP requests set-asides.

**See recommendations in Agenda Item  
E.6.a Supplemental GMT Report 1 November 2023**

# Recreational Sablefish N of 36° N

- The Council expressed interest in reviewing the sablefish north of 36° N. lat. recreational off-the-top set aside for potential modification
  - Set-aside is currently 6mt
- 2023 catch estimates through July for California, Oregon, and Washington are roughly 20 mt and are anticipated to reach 25 mt by the end of the year

	WA	OR	CA
Sablefish rec harvest to date	*	2.2	11.6

\* Sablefish have been landed in the Washington recreational fishery in 2023 but state catch estimation procedures include sablefish in a mixed species category and thus do not support production of a species specific catch estimate.

- Based on increased recreational mortality in 2023, the **GMT recommends a sablefish north of 36° N. lat. recreational off-the-top set-aside of 30 mt**

# Recreational Sablefish S of 36° N

---

Currently, there is no recreational set-aside for sablefish south.

- 2005 - 2022: Rec mortality of sablefish south was less than 1.15 mt
- 2023: Rec mortality of sablefish estimated to be .9mt between January and July.

Why might the Council consider a rec set-aside for sablefish south?

- There is indication more recreational anglers are interested in targeting sablefish due to other groundfish restrictions.
- The repeal of the Cowcod Conservation Area (CCA) will open up new areas anglers could target sablefish S of 36° N. lat
- A set-aside could better account for recreational sablefish south of 36° N. lat. mortality.

**The GMT recommends creating a sablefish south of 36° N. lat. recreational off-the-top set-aside of 10 mt**

# Directed Pacific Halibut

---

- Council expressed interest in identifying groundfish set-asides for the directed Pacific halibut fishery
- Mortality in the directed Pacific halibut fishery is already accounted for in the IOA set-aside
- **GMT recommends not moving forward with this specific fishery set-aside and keep current practices to account for this mortality in the IOA sector.**

# GMT Summary Recommendations

- **The GMT recommends moving forward with analysis of the minor RCA line changes proposed by CDFW in G.6.a, Supplemental CDFW Report 1, September 2023.**
- **Tribal - Adopt values in E.7.a. Supplemental Tribal Report 1**
- **Research & IOA - Adopt the Research & IOA set-asides for 2025-26 in Appendix 1 and Appendix 2 of E.7.a. Supplemental GMT Report 2**
- **EFPs – See recommendations in Agenda Item E.6.a Supplemental GMT Report 1 November 2023**
- **Recreational sablefish north of of 36° N - Adopt a set-aside of 30 mt**
- **Recreational sablefish south of of 36° N - Create a set-aside of 10 mt**
- **Directed Pacific halibut- keep current practices to account for this mortality in the IOA sector**

# Questions

---