

2023 Limited Assessment Update of U.S. West Coast Sablefish

Updated and Added Data

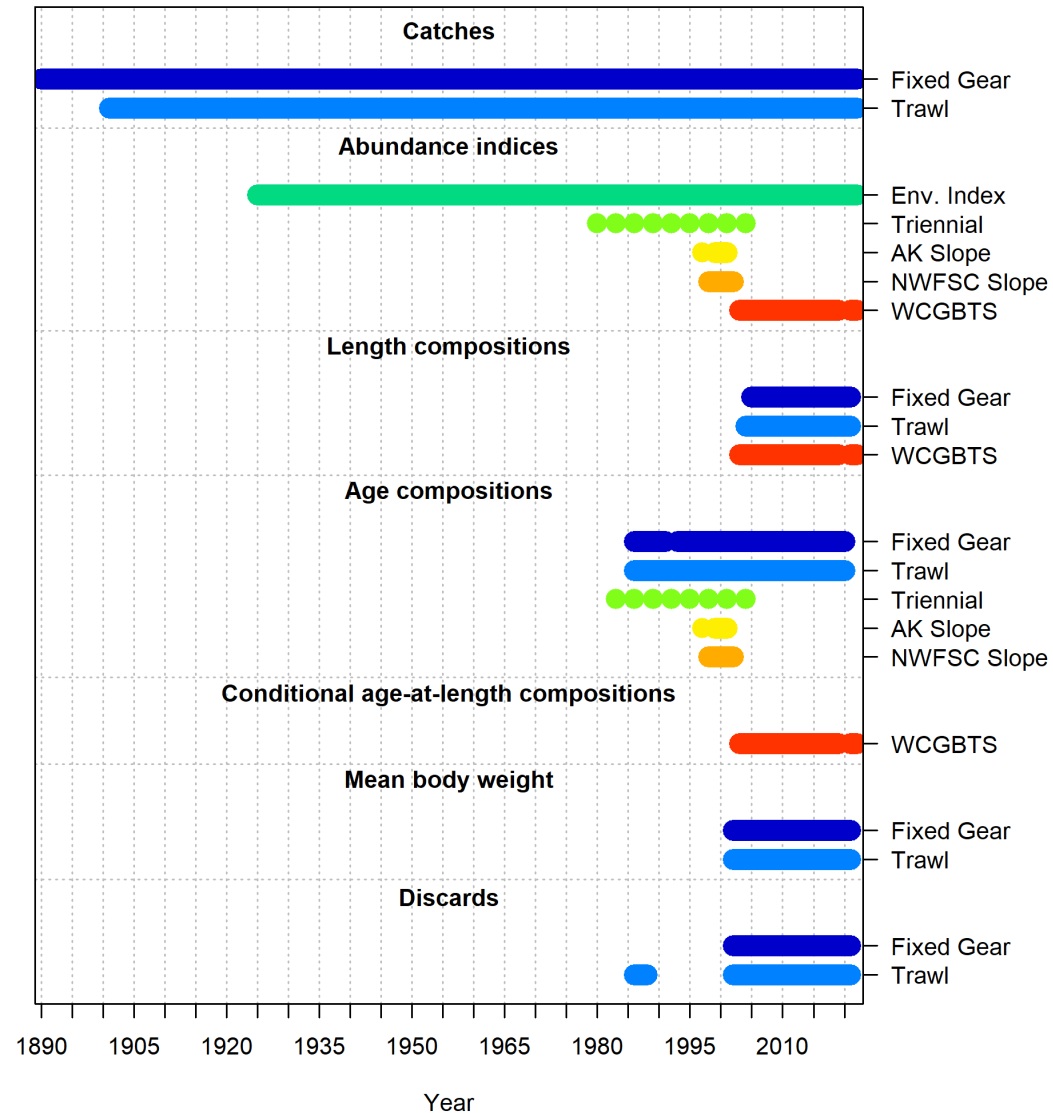
Drs. Kelli F. Johnson, Chantel R. Wetzel, and Nick Tolimieri

U.S. Department of Commerce, National Oceanic and Atmospheric Administration, National Marine Fisheries Service

Disclaimer

These materials do not constitute a formal publication and are for information only. They are in a pre-review, pre-decisional state and should not be formally cited or reproduced. They are to be considered provisional and do not represent any determination or policy of the National Oceanic and Atmospheric Administration or the Department of Commerce.

Data included in the assessment



Changes

- Landings
 - Landings from Oregon Coast INPFC area were added.
 - Landings from 1977–1982 in the reporting area that includes both U.S. and Canadian waters were assigned 50–50% to each country rather than 100% to the U.S., as was done previously.
 - Bycatch from the at-sea Pacific Hake fishery was added.
 - Fixed-gear and trawl landings from 2021–2022 were added.

Changes

- NWFSC West Coast Groundfish Bottom Trawl Survey (WCGBTS) data were updated and extended through 2022.
 - Relative index of abundance,
 - length composition, and
 - conditional-age-at-length data.

Changes

- The environmental index data were updated and extended through 2022.

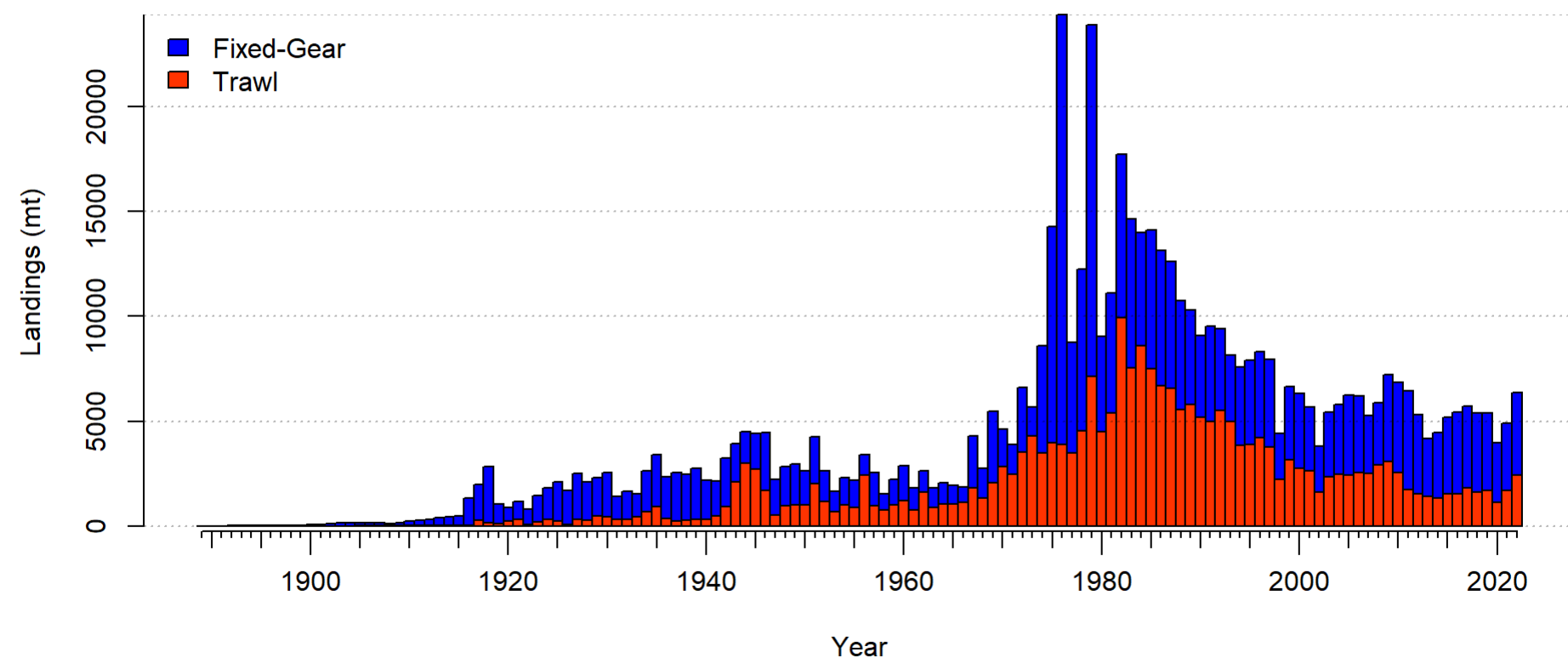
Changes

- West Coast Observers Program
 - Mean weights and length compositions from discarded fish observed by the West Coast Observers Program were updated and the new values for 2020 and 2021 were added to the model.
 - Discard rates from 2020–2021 were added to the model.

Landings

Figure

Table

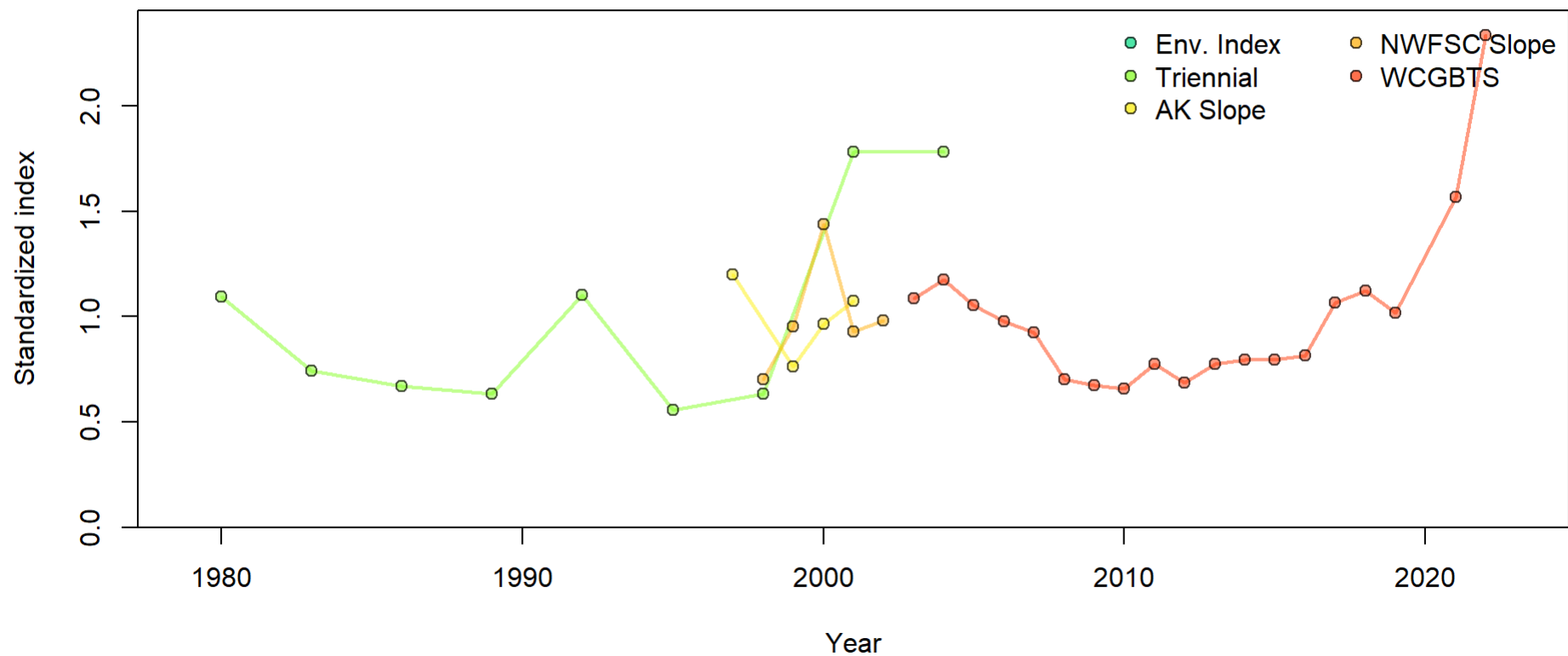


Abundance Indices

All CPUE

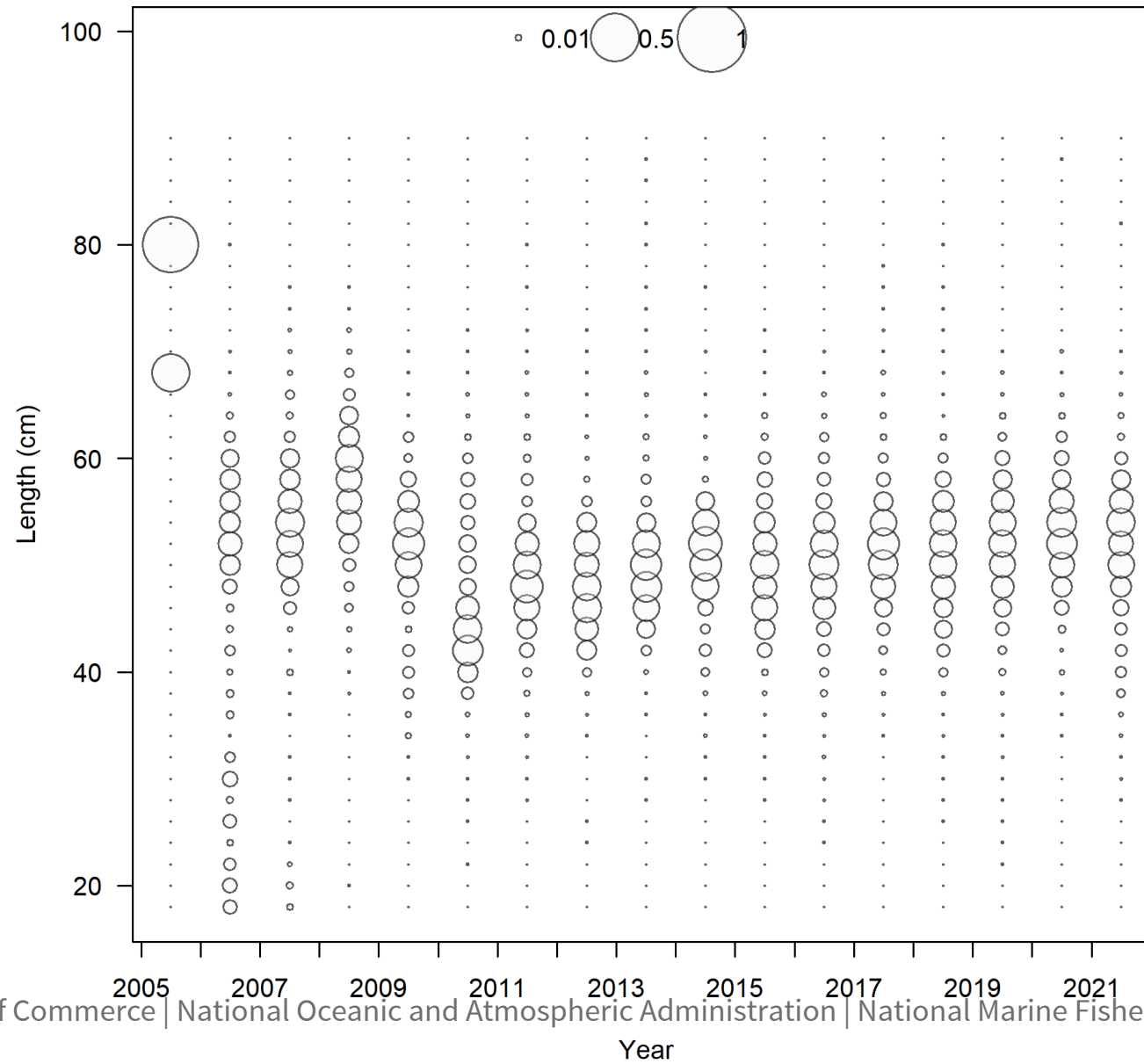
WCGBTS

Environmental



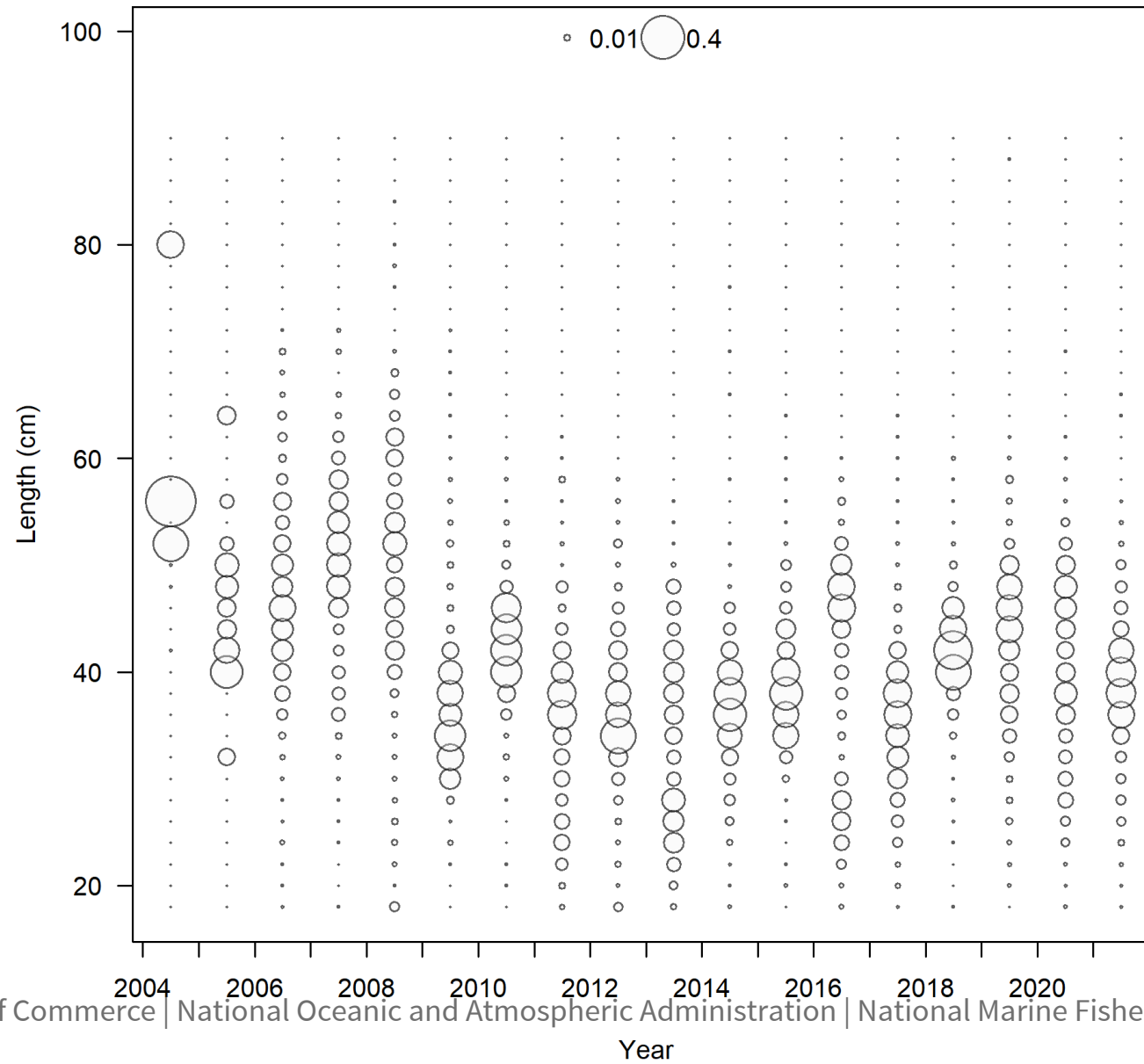
Length Compositions

Discarded
from fixed
gear



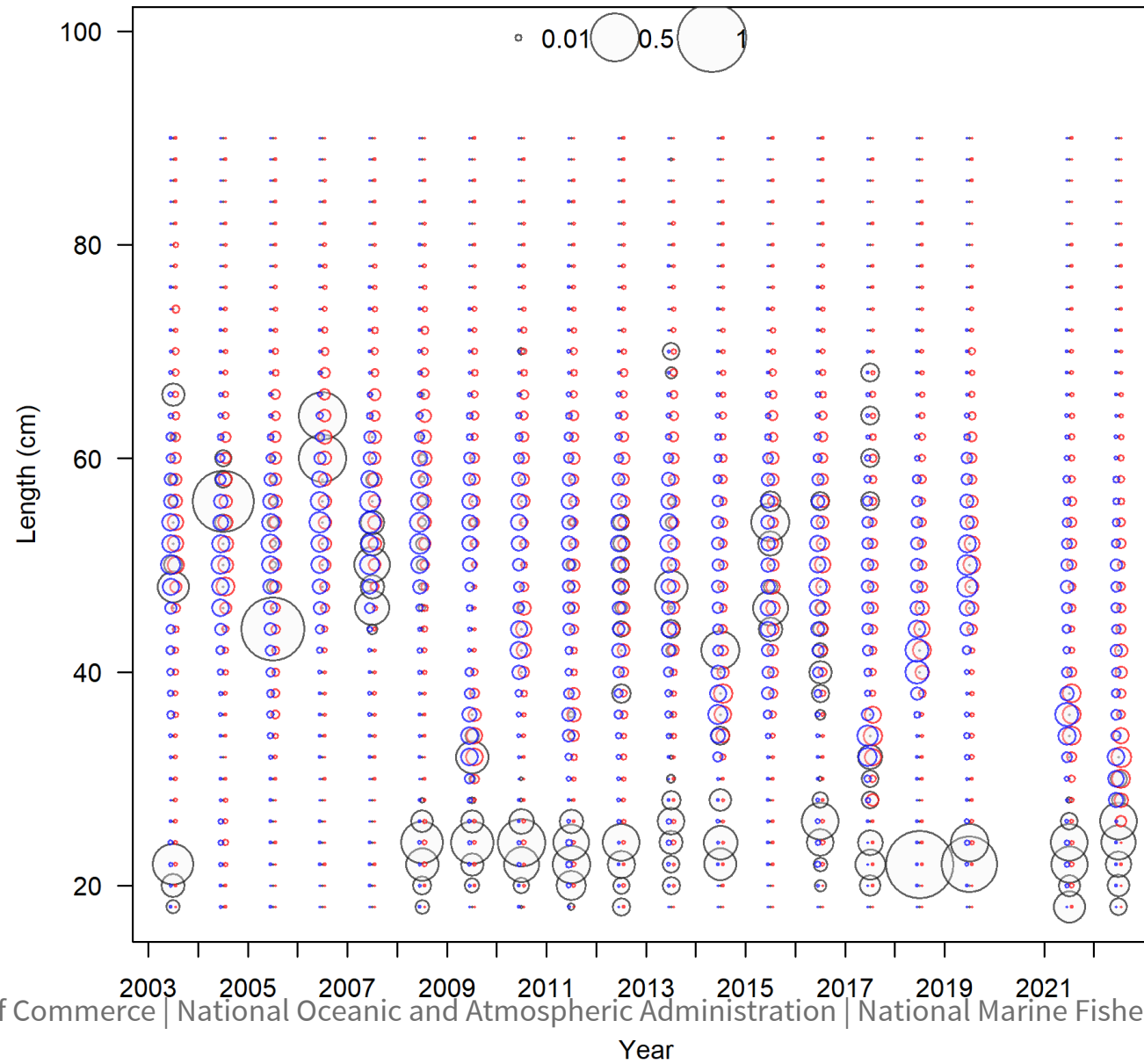
Length Compositions

Discarded
from trawl
gear

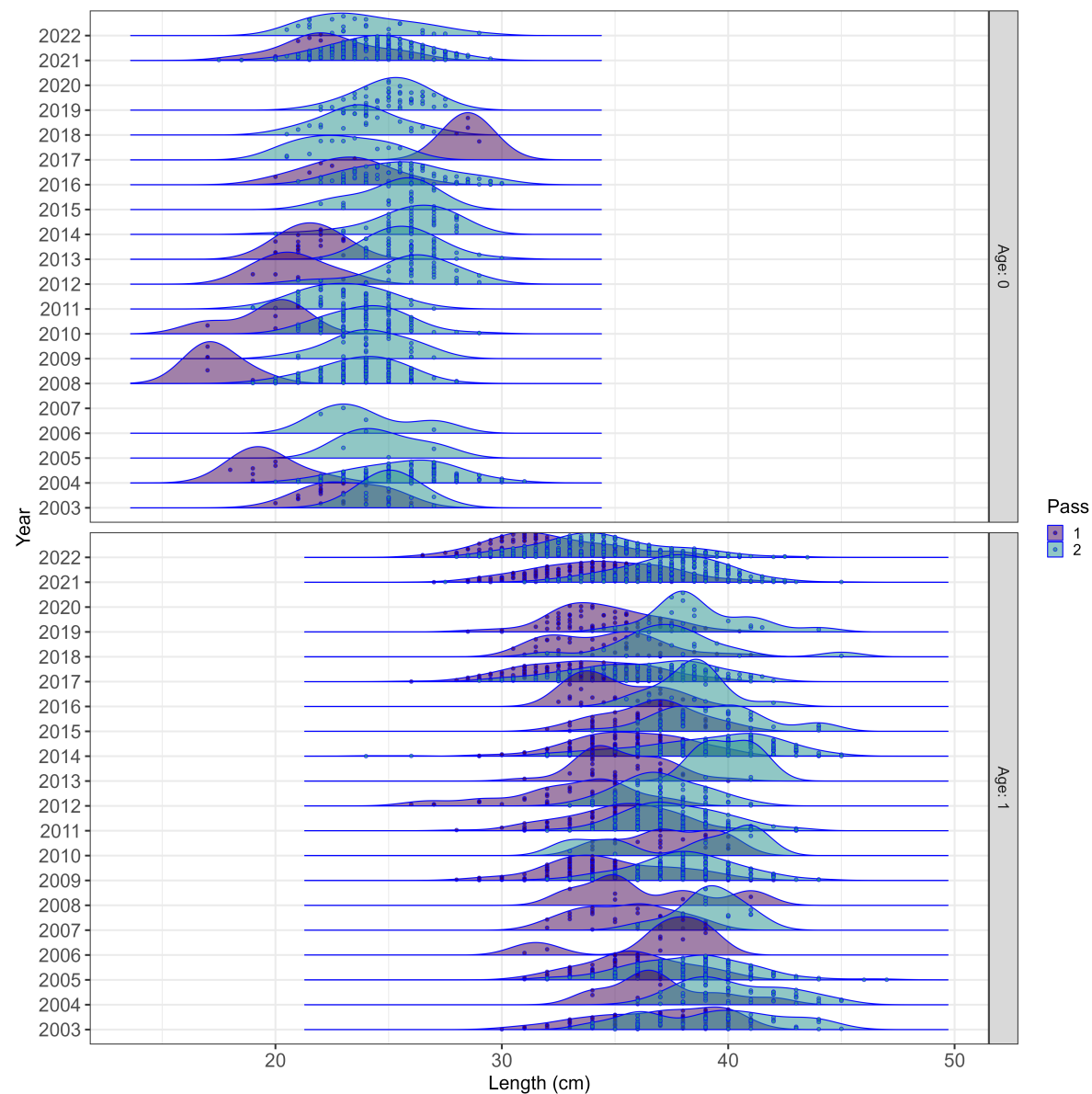


Length Compositions

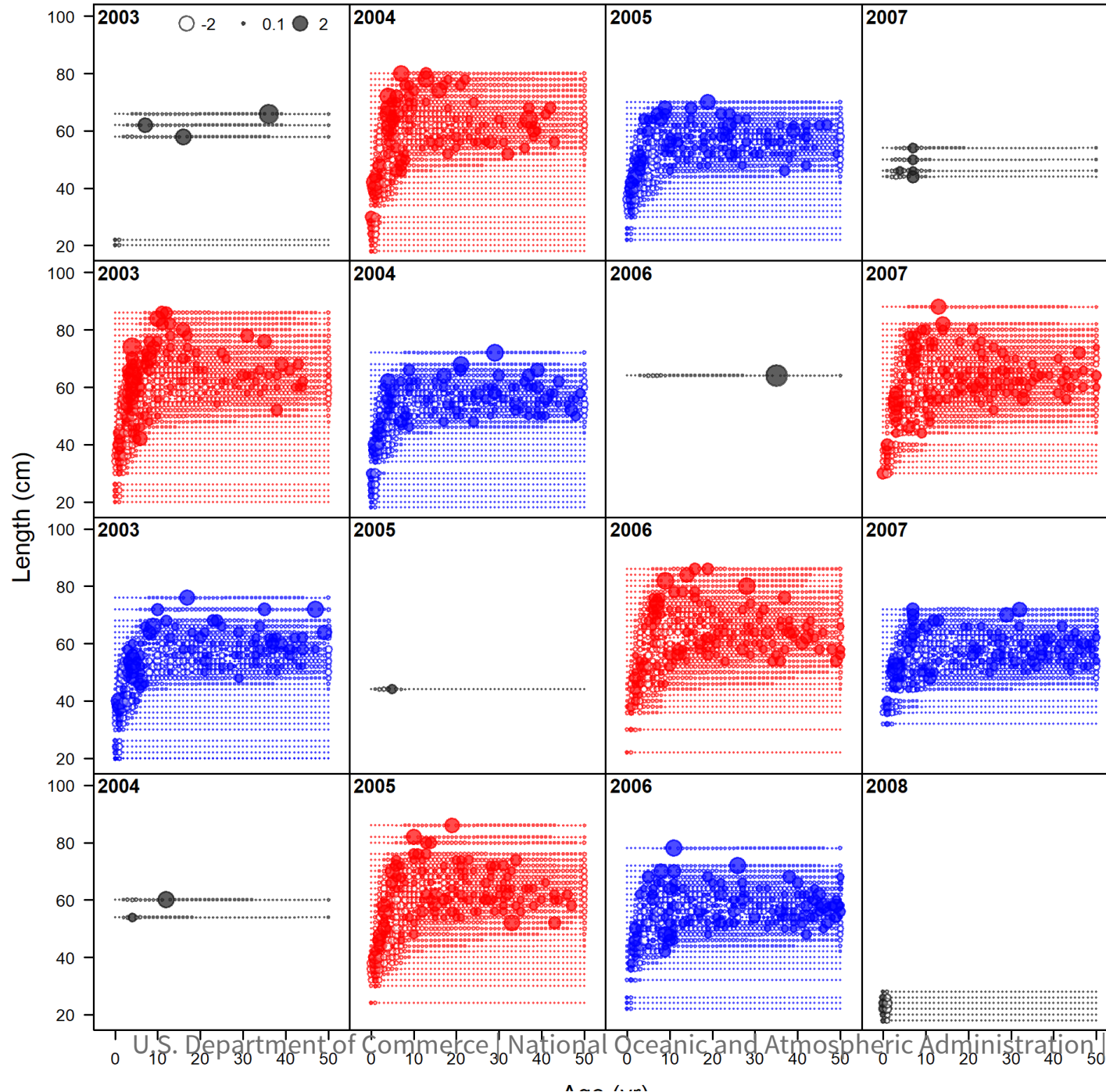
Whole
catch from
WCGBTS



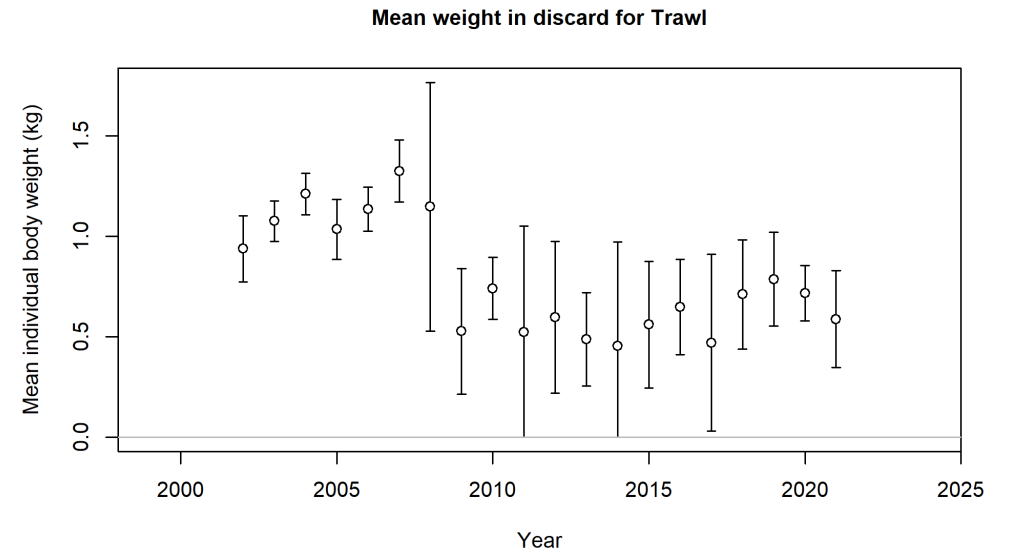
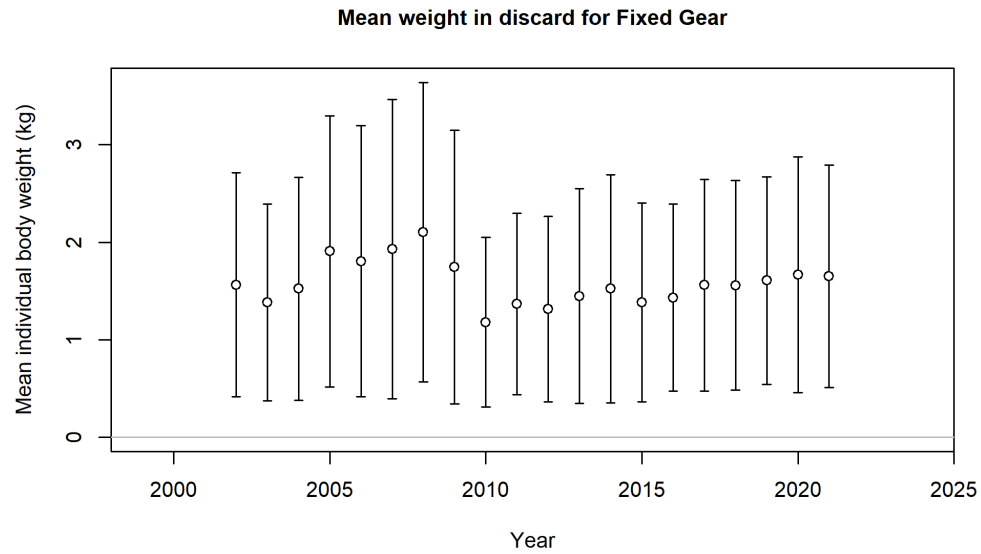
WCG BTS Age-0 and Age-1 Fish



WCGBTS

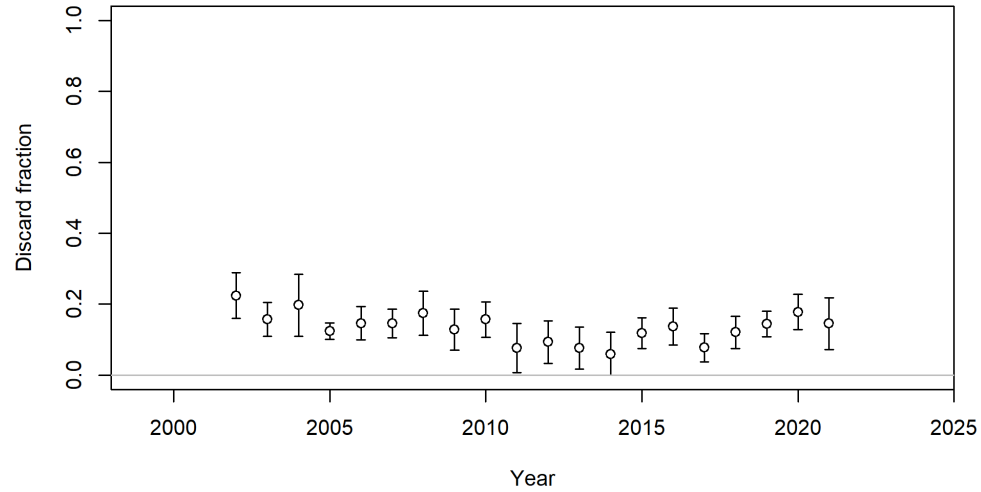


Mean Body Weight

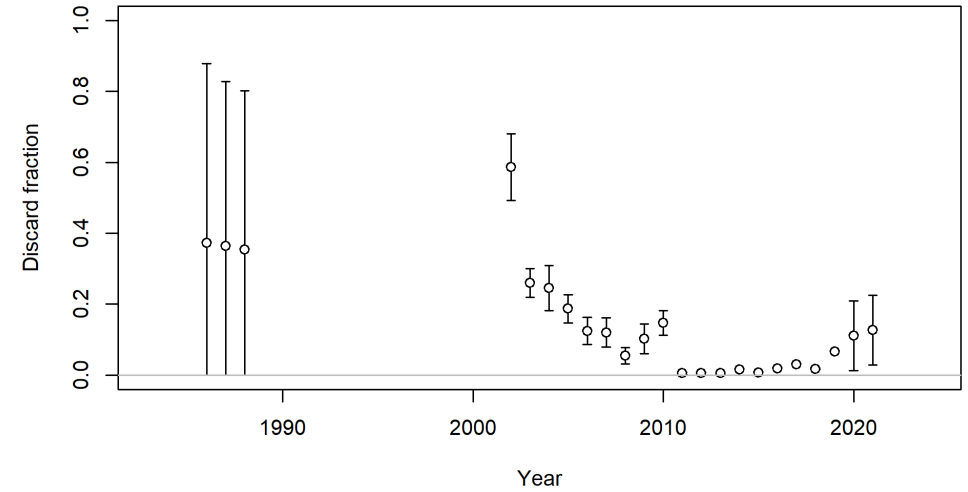


Discard Rates

Discard fraction for Fixed Gear



Discard fraction for Trawl



End of Data

