

SCHEDULE 3. Management cycles and activities related to coastal pelagic species management.

Month	Entity and Management Activity
PACIFIC MACKEREL	
<p>Pacific mackerel assessments will be conducted on a rotating cycle. Every four years, a full assessment is conducted, and every alternating four years an update assessment <u>catch-only projection</u> is conducted. Annual specifications are set on a biennial basis. In assessment years (either full or <u>catch-only projection</u>update), the following schedule will be followed:</p>	
April	<i>Assessment authors</i> prepare draft assessment documents.
May	<i>Coastal Pelagic Species Management Team (CPSMT), Coastal Pelagic Species Advisory Subpanel (CPSAS), and public</i> review draft assessments, executive summaries, and recommended harvest guidelines.
June	<i>Assessment authors</i> submit final assessments, executive summaries, and recommended harvest guidelines to Council staff for inclusion in June Council meeting briefing book.
	<i>SSC</i> reviews assessments, executive summaries, and recommended harvest guidelines.
	<i>Council</i> adopts annual harvest level specifications and management measures. Annual harvest level specifications for Pacific mackerel are adopted for two consecutive fishing years.
	<i>U.S. Department of Commerce</i> implements annual harvest level specifications and management measures, for two consecutive fishing years. Pacific mackerel season opens July 1.
March	<i>Council</i> may consider inseason action to transfer unused incidental set-aside to the directed fishery.
PACIFIC SARDINE	
February	<i>Assessment authors</i> prepare draft assessment documents.
March	<i>CPSMT, CPSAS, and public</i> review draft assessment, executive summary, and recommended harvest guideline.
April	<i>SSC</i> reviews assessment, executive summary, and recommended harvest guideline.
	<i>Council</i> adopts annual harvest level specification and management measures.
	<i>U.S. Department of Commerce</i> implements annual harvest level specification and management measures. Pacific sardine season opens July 1.

~~MONITORED SPECIES~~

CENTRAL SUBPOPULATION OF NORTHERN ANCHOVY

The schedule and process for the management for the central subpopulation for northern anchovy is described below and the flowchart in Figure 1.

A benchmark assessment will be conducted every eight years unless a trigger is met, and a new benchmark assessment is conducted sooner. Assessment results will provide the mean long-term biomass estimate for the previous 10-year period used to establish a new overfishing limit (OFL) and acceptable biological catch (ABC).

During intervening years between benchmark assessments, at two-year intervals both the short-term three-year mean biomass estimate from survey results and catch attainment will be examined:

- 1) At each biennial evaluation the trigger for a change to the ABC would be a short-term biomass that results in an ABC at least a proportion of 0.4 less than the ABC from the last assessment (i.e., less than or equal to 60% of ABC). If that ABC trigger is hit, the ABC would be reduced for the next two fishing years. When next evaluated, if short-term biomass is no longer below that trigger threshold, the ABC for the following two fishing years would revert to the ABC determined from the last assessment.

- 2) If catch has exceeded 90% of the ABC for two years, then the Council will evaluate if a new assessment should be scheduled for the following year.

The details of this flowchart process and explicit calculation formulas can be found in the Coastal Pelagic Species Stock Assessment and Fishery Evaluation document. Assessments are done every eight years, but trigger points are checked every two years which may change the assessment cycle. The following schedule will be used for assessments and examination of survey results and catch attainment in years that they occur:

Month	Entity and Management Activity
April	<i>Assessment authors</i> prepare draft assessment documents. CPSMT reviews available abundance estimates from NMFS CPS surveys for short-term (three-year mean) biomass and catch attainment for last two years and determines whether management action triggers occurred.
May	<i>CPSMT, CPSAS, and public</i> review draft assessment, executive summary, and calculated harvest specifications in years that an assessment occurs.

Month	Entity and Management Activity
June	<p>SSC reviews assessment, executive summary, and recommends harvest specifications. If the CPSMT reports that management action triggers occurred, the SSC reviews survey results and catch attainment and recommends a new short-term ABC or the ABC from the last assessment if indicated by survey results.</p> <p>Council adopts long- and/or short-term harvest level specifications and management measures. If catch attainment exceeded 90 percent of the ABC for two years in a row, Council evaluates and determines if a new assessment should be conducted the following year.</p> <p>U.S. Department of Commerce implements annual harvest level specification and management measures. Central subpopulation of northern anchovy season opens January 1.</p>

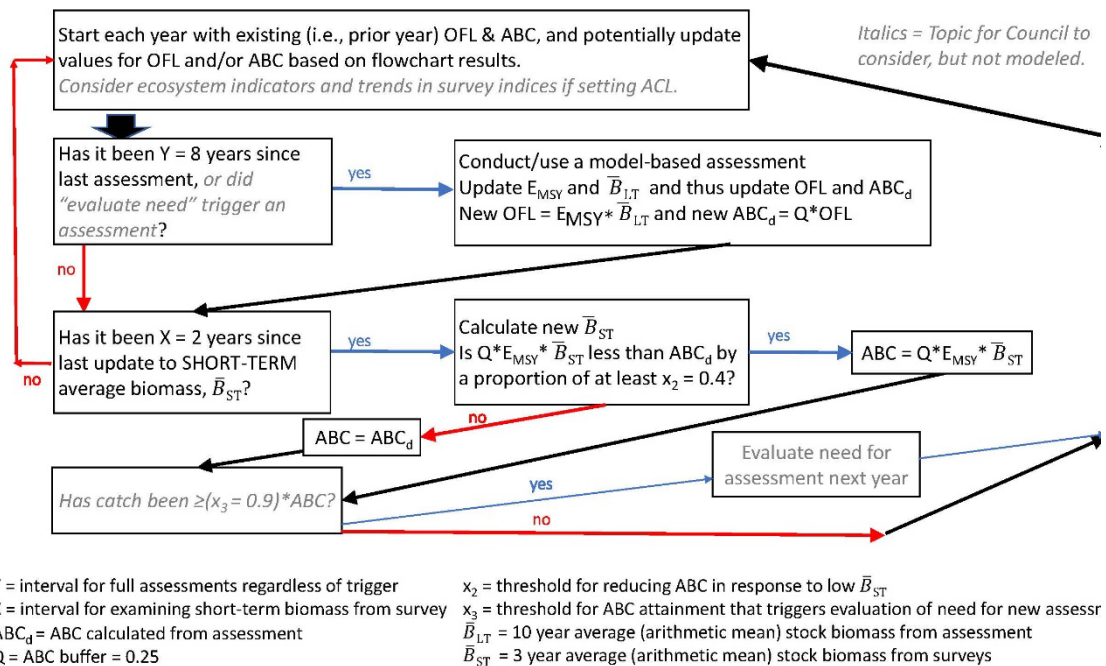


Figure 1. Flowchart depicts the framework for managing the central subpopulation of northern anchovy with the parameter values to be utilized.

OTHER CPS STOCKS

For other ~~monitored~~ stocks, the CPS FMP specifies tracking trends in landings, and qualitative comparison to available abundance data, but without periodic stock assessments or periodic adjustments to target harvest levels. After harvest specifications have been established, they will remain in place until the Council takes action to adjust the harvest specifications, ~~or to~~

~~move a monitored species to active management~~. If the Council wishes to adjust harvest level specifications or management measures, the process will follow that for Pacific mackerel and

Pacific sardine. Assessment authors will present a draft stock assessment in advance of a review by the CPSMT, CPSAS, and the public. Final assessments and recommended harvest specifications and management measures will be included in the appropriate briefing book, for review by the SSC. The Council adopts final specifications, and the U.S. Department of Commerce implements the harvest specifications and management measures.

NOTE: The Stock Assessment and Fishery Evaluation (SAFE) document for ~~coastal pelagic species~~CPS will be prepared and made available ~~presented in two sections. The main section will be submitted at the June Council meeting. This portion of the SAFE will include the annual Pacific mackerel and Pacific sardine assessments, evaluation of the fisheries based on the calendar year, and the status of monitored species. The second (supplemental) section will include any relevant information regarding the status of the CPS fisheries. The supplemental section, when compiled, will be presented at~~ by the November Council meeting.