

Agenda Item F.4
Supplemental Staff Presentation 1
March 2023

Non-Trawl Area Management - FPA

Agenda Item F.4


March 2023

Briefing Book Items

 Situation Summary (includes link to public mapping portal)

 Attachment 1 (Electronic Only): Draft Non-Trawl Sector Area Management Measures EA/RIR/RFA

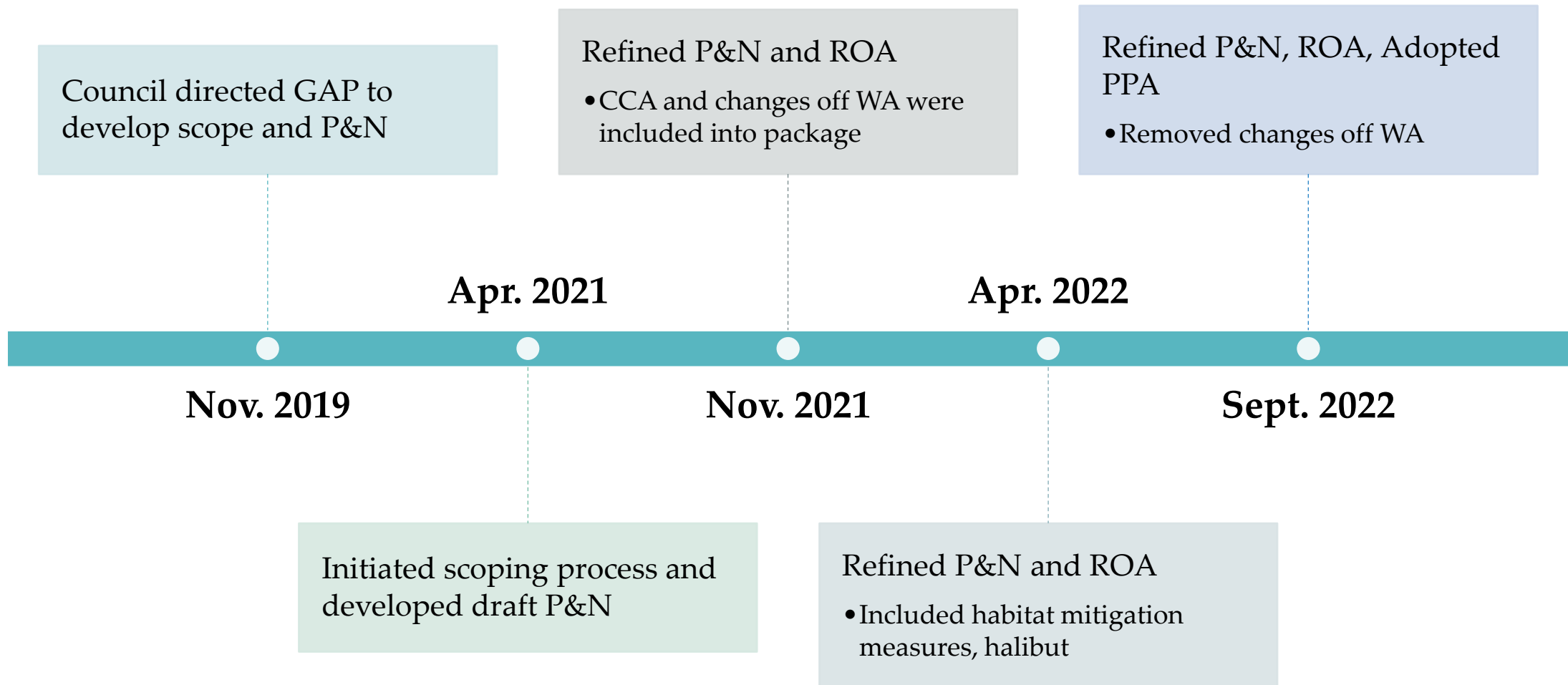
 CDFW Report 1: Modifications to 75-fm waypoints around Cordell Bank

 Supplemental ONMS Report

 Supplemental REVISED ODFW Report 1: YRCAs

 Supplemental CDFW Report 2: 75 fm waypoint correction

 Supplemental GMT, GAP, HC, EC Reports

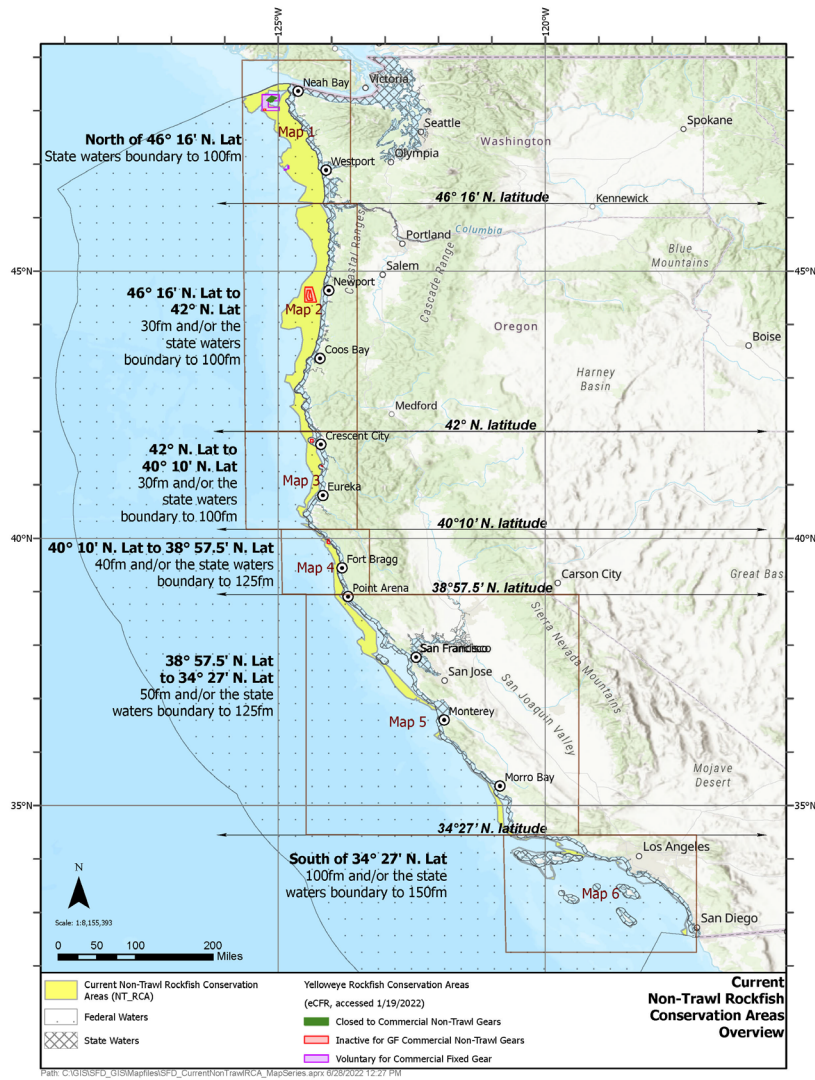




Adopt Final Preferred Alternative

Council Action

Non-Trawl RCA

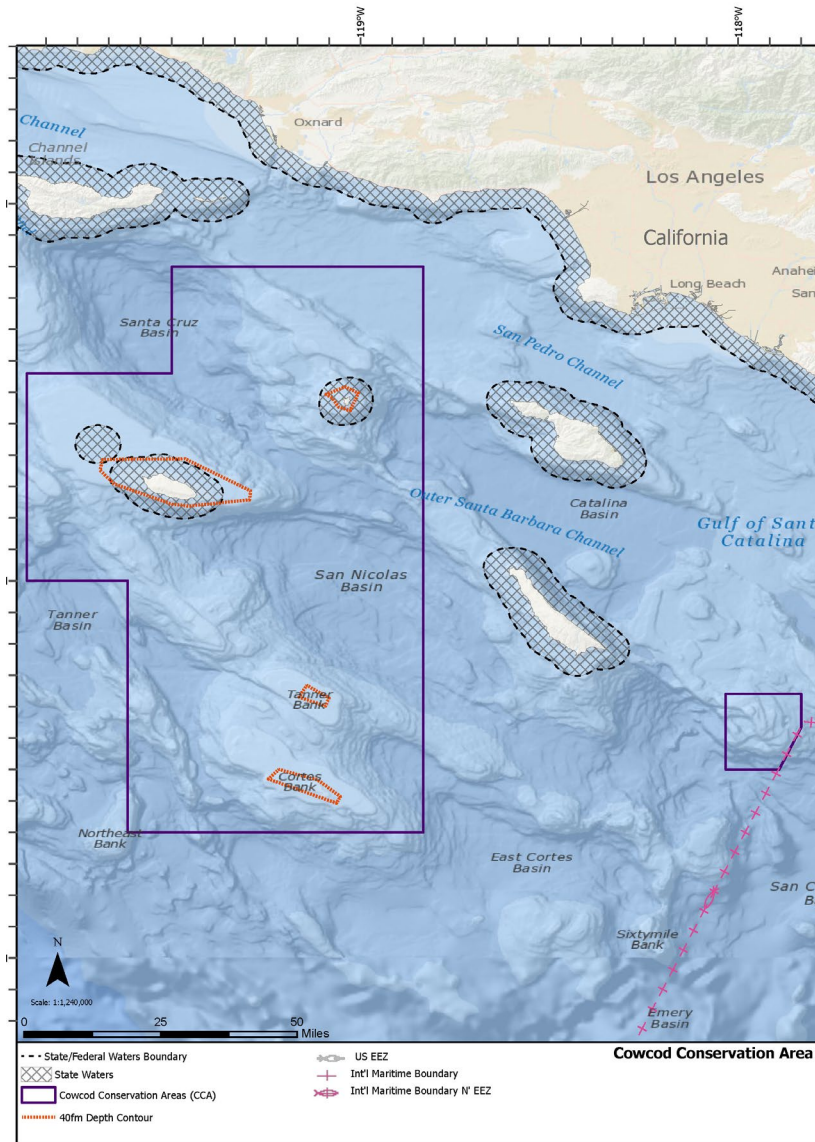


- Established in 2003 to protect overfished rockfish
- Applies to commercial vessels
 - Directed groundfish (OA, LEFG, IFQ GS)
 - Incidental OA (Directed halibut, salmon troll)
- All but yelloweye rockfish are rebuilt
- Prohibits non-trawl vessels from targeting healthy shelf stocks
- Boundaries amended several times through GF Specifications

See pg. 9, Attachment 1

Cowcod Conservation Areas (CCA)-East & West

- Established in 2001 to protect cowcod
- Rebuilt in 2019
- Applies to recreational and commercial vessels (non-trawl and trawl)
- Non-trawl vessels prohibited from fishing outside of 40 fathoms around islands (with some exceptions)

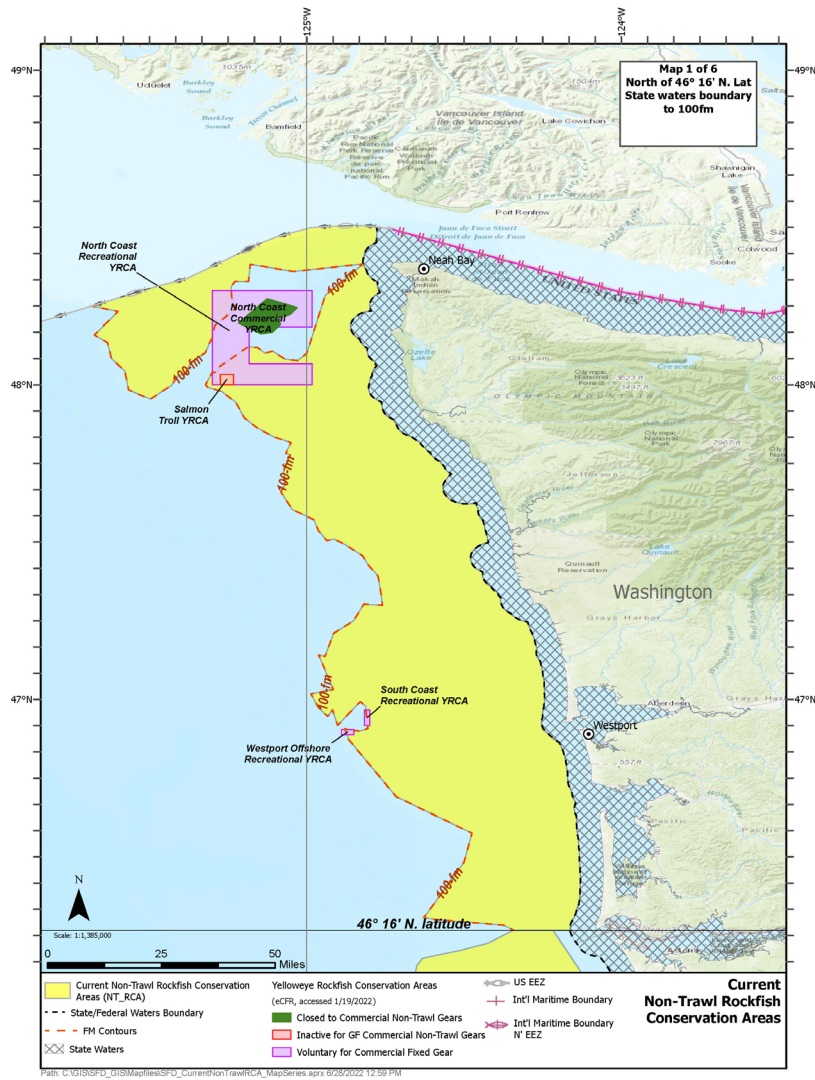


See pg. 11, Attachment 1

Yelloweye Rockfish Conservation Areas (YRCAs)

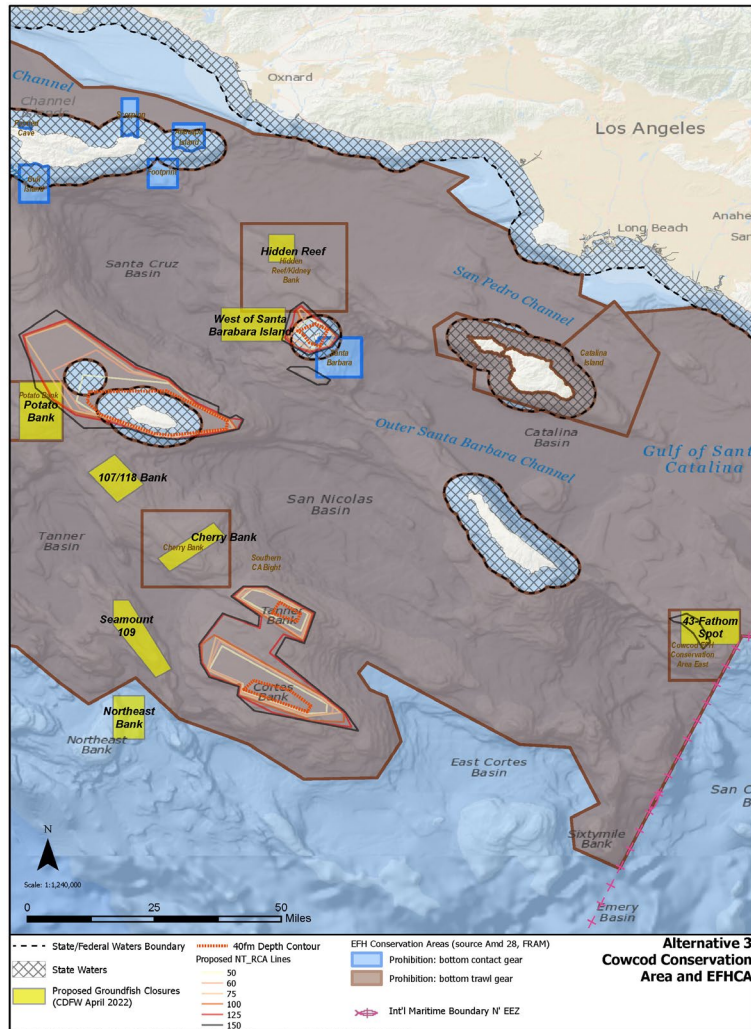
- First developed in 2003
- Only 1 currently active for non-trawl: North Coast Commercial YRCA
- Some voluntary avoidance for FG off WA
- Most not active for non-trawl gears

See pg. 13-16, Attachment 1



Essential Fish Habitat Conservation Areas (EFHCAs)

- EFHCAs designed to protect or mitigate habitat impact
- Two types of EFHCAs:
 - Bottom trawl
 - Bottom contact
- Prohibits all gears and fisheries - federal and non-federal
- Considerations for EFH changes are typically be made during an EFH review process (next review for GF - 2025)



Range of Alternatives

- No Action
- Alternative 1: Modify gear configurations and catch restrictions within the NT_RCA
- Alternative 2: Move seaward boundary of NT_RCA to 75 fm b/t OR/WA border and 34° 27' N. lat.; develop EFHCAs and YRCAs
- Alternative 3: Repeal CCA for non-trawl sectors and develop groundfish exclusion areas (GEAs)
- Alternative 4: Develop block area closures (BACs)

Key Updates from September 2022

- Revisions to Alternative 1 language to clarify elements being proposed beyond those implemented in the 2023-2024 harvest specifications (See item 12e).
- Additional analysis regarding impacts of allowing the use of natural bait and changing depth restriction from 50 ft to 30 ft off the bottom for stationary vertical jig gear.
- Description of new suboptions 1d and 1e for Alternative 2, which describe the PPA EFHCAs off Oregon.
- Change in nomenclature for “proposed groundfish closures” to “Groundfish Exclusion Areas” in the former CCA boundary.

**Alternative 1:
Modify gear
specifications
and catch
restrictions
applicable to
fishing inside the
NT_RCA b/t 46
16' N. lat. and the
U.S./Mexico
border for the
directed OA,
LEFG, and IFQ GS
sectors.**

One or multiple suboptions:

Suboption 1 (PPA): Allow LEFG vessels to fish up to LEFG trip limits and IFQ GS vessels to fish QPs in NT_RCA using stationary vertical jig gear or groundfish troll gear.

Suboption 2 (PPA): Allow vessels using stationary vertical jig gear to use natural bait.

Suboption 3: Allow vertical stationary jig gear to be suspended no less than 30 ft. off bottom.

Suboption 1: Crossover Provisions

- No Action- LEFG and IFQ GS vessels would need to declare into Directed OA → subject to OA trip limits
- Suboption 1- Allows vessels to fish within sectors and respective limits
- Impacts
 - Likely increase in catch by LEFG sectors
 - Not as likely in IFQ GS (sablefish focused)

Stationary Vertical Jig Gear Suboptions

- Council adopted natural bait allowance as PPA (suboption 2) and added suboption to look at change in fishing depth off bottom from 50 ft to 30 ft.
- Natural bait
 - Likely some increases in impacts to target and non-target species
 - Unlikely to impact seabirds because of fishing style
- 30 ft suspension depth off bottom
 - Potential for increase bottom contact and habitat impacts
 - Likely still limited b/c of fishing style of gear and GAP notes - 30-ft leader is best to avoid snags/loss of gear.
 - Potential for some change in target and non-target species

**Alternative 2:
Move seaward
boundary of
NT_RCA to 75 fm
from 46° 16' to 34
° 27' N. lat.**

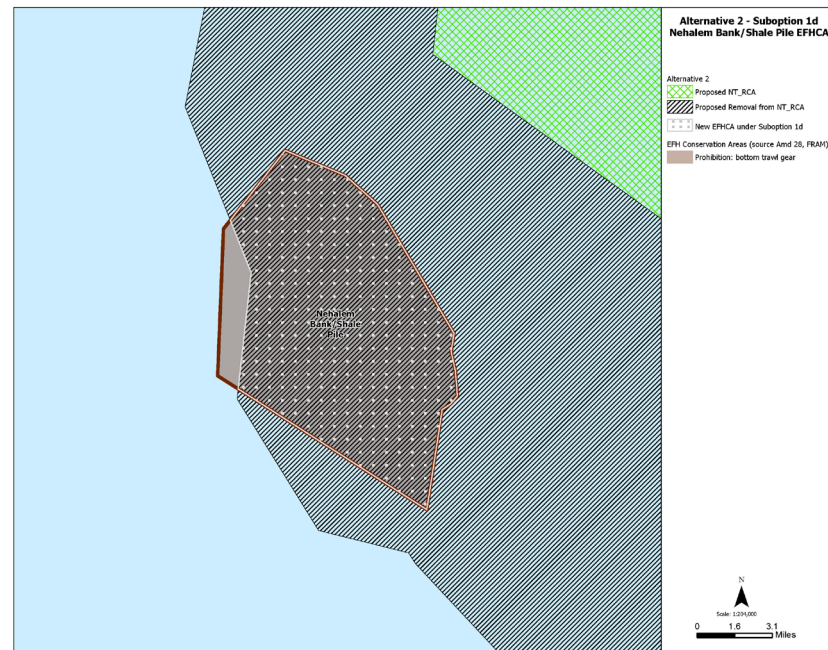
- Applies to commercial groundfish non-trawl and directed halibut
- PPA Suboptions
 - 1d: Create non-trawl bottom contact EFHCA in areas opened at Nehalem Bank and Bandon High Spot bottom trawl EFHCAs
 - 1e: Create non-trawl bottom contact EFHCAs over entire bottom trawl EFHCAs at Garibaldi Reef North, Garibaldi Reef South, Arago Reef
 - 2: Implement YRCA west of Heceta Bank
 - 3: Develop 3 YRCAs off Oregon

Alternative 2: Impacts

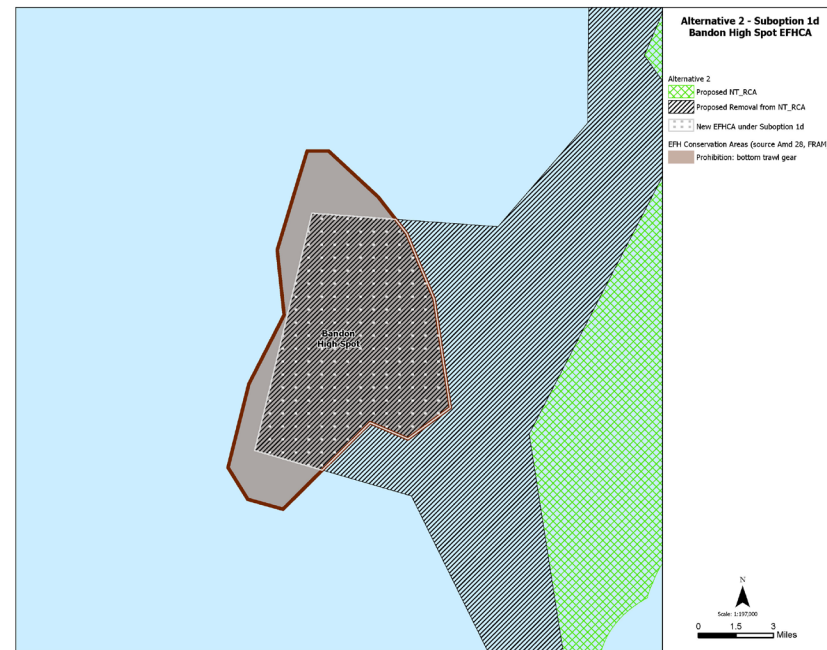
- Opens 2,351 sq. mi. to non-trawl groundfish and directed halibut fishing
- Positive socio-economic benefit to industry/communities through increased access to target stocks
- Uncertain, but likely low risk of impacts to yelloweye (esp. with mitigation measures)
- Likely non-significant impacts to ESA-listed species (humpbacks, seabirds, turtles)

Suboption 1d EFHCAs

Nehalem Bank East

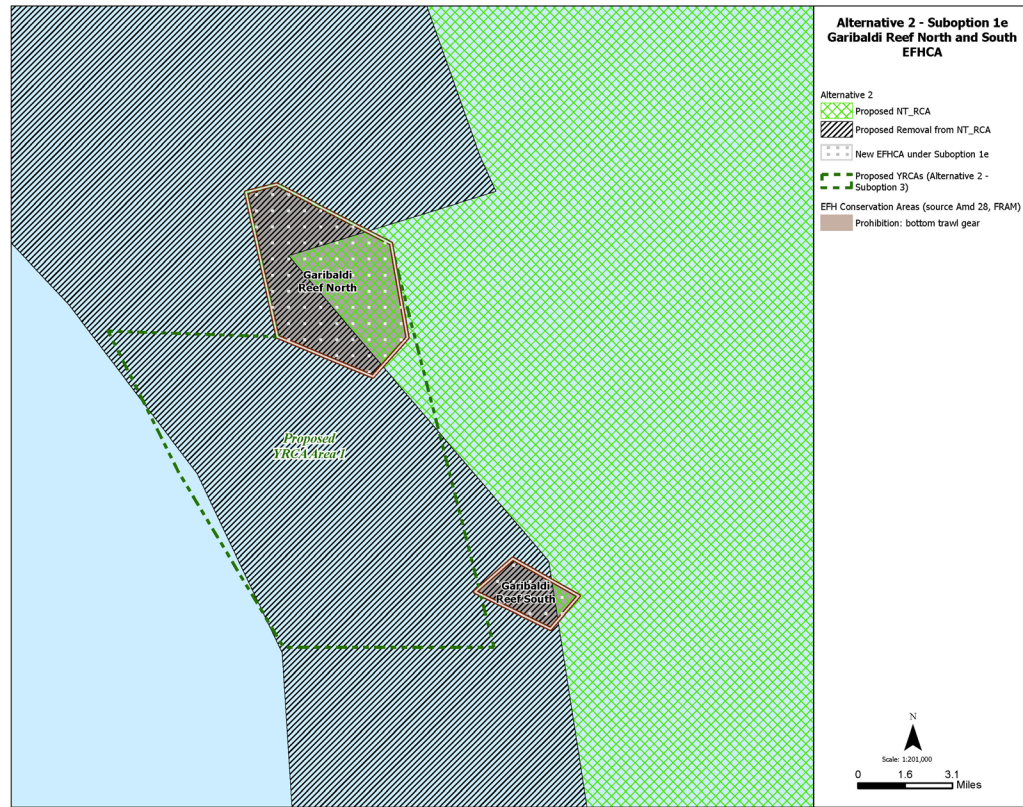


Bandon High Spot East



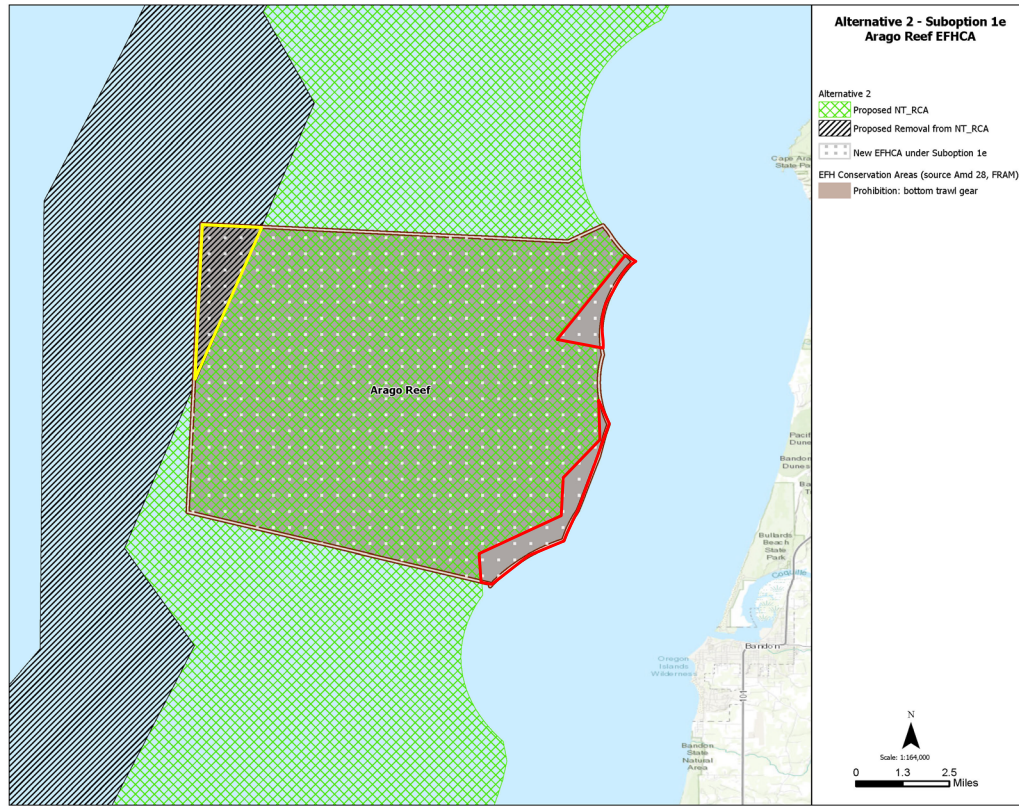
Develop EFHCA within the areas to be exposed under Alternative 2 for groundfish non-trawl and halibut bottom contact gear.

Suboption 1e: Garibaldi Reef N and S



- Closes entire EFHCA to groundfish non-trawl and halibut bottom contact gear
 - Including the areas that would remain within the NT_RCA

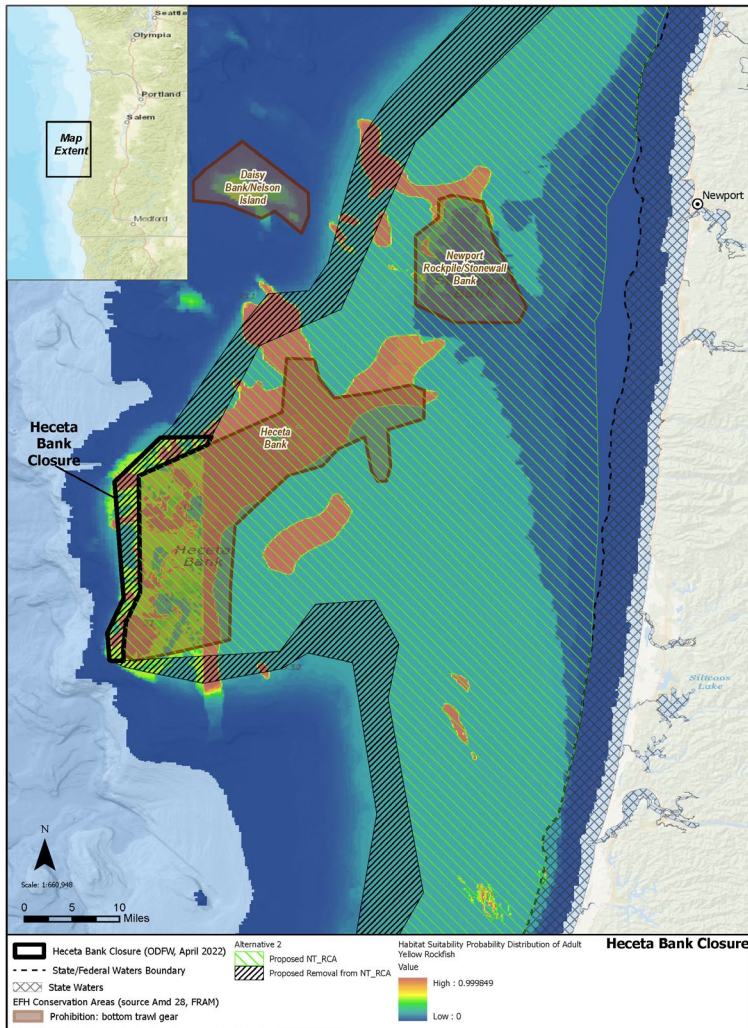
Suboption 1e: Arago Reef



- Due to small area being exposed, Council selected to close off entire EFHCA during PPA
- Suboption would close off areas in federal waters open to fishing on shoreward side of NT_RCA boundary

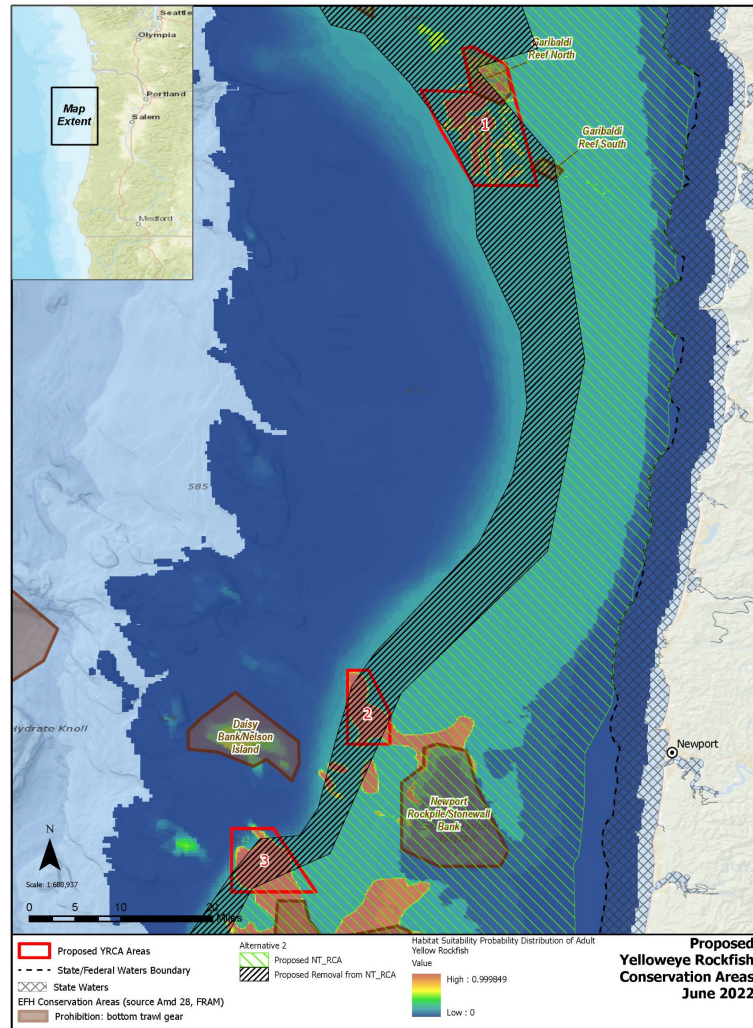
Suboption 2: Heceta Bank YRCA

- Implement a YRCA west of Heceta Bank EFHCA – active at time of implementation
- Applicable to non-trawl bottom contact groundfish and directed halibut



Suboption 3: Develop YRCAs

- Develop 3 YRCAs off Oregon
- Not active at time of implementation
- Applicable to non-trawl bottom contact groundfish and directed halibut
- Could be sector/time specific

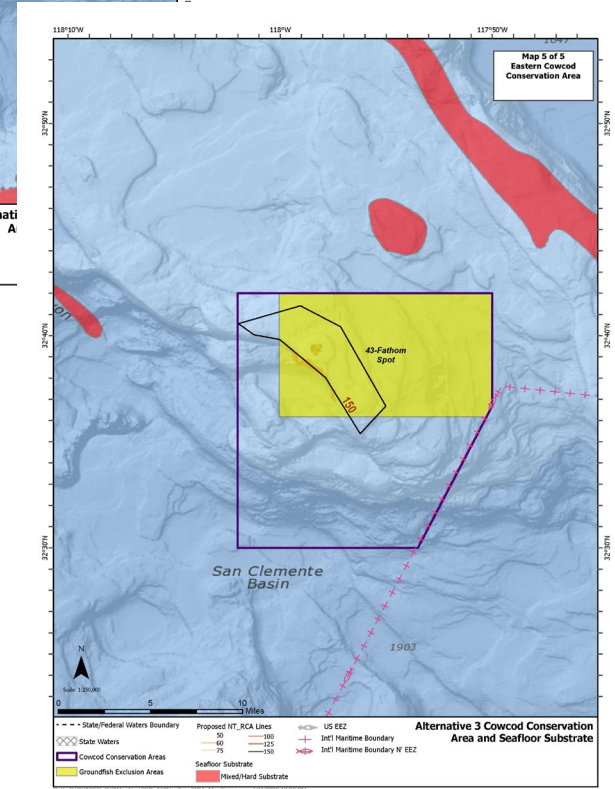
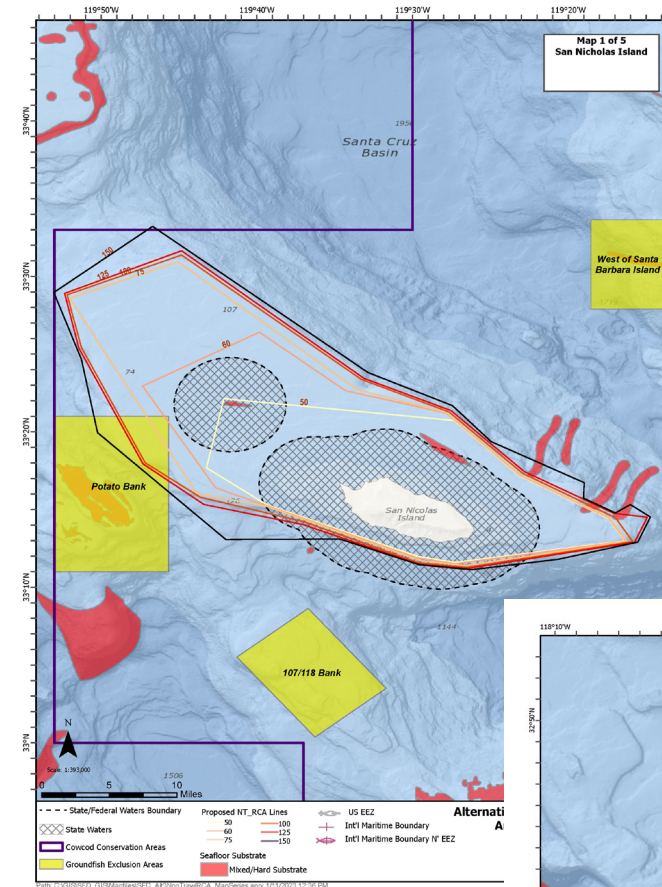


Alternative 3: Repeal East and West CCAs

- Applies to non-trawl commercial and recreational fisheries
 - CCAs will remain for trawl
- Develops NT_RCA lines for commercial and recreational fisheries
- Creates 8 Groundfish Exclusion Areas (GEAs)
 - Formerly called “proposed groundfish closures”

Groundfish Exclusion Areas

- Apply to all groundfish recreational and non-trawl commercial vessels
- Allows continuous transit if GF on board or non-GF fishing allowed if no GF on board
- All overlap with bottom trawl EFHCAs



Alternative 3 Impacts

- Opens over 4,600 sq. mi. to groundfish fishing
 - Nearly all closed to bottom trawl
- Positive socio-economic benefit
- Low risk (with mitigation measures) to cowcod, bronzespotted
 - Yelloweye presence in eastern CCA → GEA to limit fishing
- Low risk to whales, seabirds, and turtles

Alternative 4: Develop Block Area Closures

Create mechanism for BACs to be used for commercial GF non-trawl sectors (directed OA, LEFG, IFQ GS) coastwide

- Currently available only for trawl gears
- BACs can be implemented
 - Preseason/Inseason
 - Sector/gear/duration specific
- Potential issues w/ lack of inseason data
 - Fish tickets - only retained species
 - Low observer coverage
 - Logbooks- starting in 2023



Mapping Public Portal

Access the Non-Trawl
Area Management
Measures mapping
portal at:

<https://arcg.is/4GP19>

Council Action



Adopt final preferred alternative(s), as appropriate.

Questions?

—