

OREGON DEPARTMENT OF FISH AND WILDLIFE REPORT ON NON-TRAWL AREA
MANAGEMENT AND THE PROPOSED YELLOWEYE ROCKFISH CONSERVATION
AREAS

In the review of the proposed yelloweye rockfish conservation areas (YRCA) under Alternative 2, suboption 3, the areas identified in the previous analysis ([Agenda Item G.6, Attachment 1, September 2022](#)) would close areas currently open to fishing outside of the 100-fathom line. In an effort to align the proposed yelloweye rockfish conservation areas with the original purpose and need to “provide access to additional areas that are currently closed to groundfish fishing inside the Non-Trawl Rockfish Conservation Area (RCA) and Cowcod Conservation Area (CCA). In addition, the proposed actions minimize adverse effects on designated Essential Fish Habitat (EFH) and sensitive benthic habitats exposed to fishing activity...”, the Oregon Department of Fish and Wildlife (ODFW) proposes altering the coordinates of the proposed YRCAs to no longer include anything seaward of the 100-fathom line.

Tillamook Yelloweye Rockfish Conservation Area

ODFW, in consultation with Oregon State Police, propose the following changes to the Council staff proposed YRCA that is in the vicinity of the Garibaldi North and South EFH areas. These boundary modifications are intended to encompass continuous potential yelloweye habitat within the boundaries of the Non-Trawl RCA between 75 and 100 fm that do not already have yelloweye habitat protections under EFHCA to facilitate boundary identification by members of the industry and enforcement.

The Tillamook YRCA would protect habitat features between the Garibaldi North and Garibaldi South EFHCA between the 100 and 75 fathom line (Figure 1). The Tillamook YRCA is defined by straight lines connecting the following specific latitude and longitude coordinates in the order listed, starting from the top left point:

- 1) 45°40.96' N. lat.; 124°27.52' W. long.
 - 2) 45°40.96' N. lat.; 124°19.99' W. long.
 - 3) 45°34.44' N. lat.; 124°14.48' W. long.
 - 4) 45°31.93' N. lat.; 124°14.05' W. long.
 - 5) 45°32.93' N. lat.; 124°22.54' W. long.
 - 6) 45°36.95' N. lat.; 124°24.45' W. long.
 - 7) 45°38.89' N. lat.; 124°25.92' W. long.
- and connecting back to 45°40.96' N. lat.; 124°27.52' W. long.

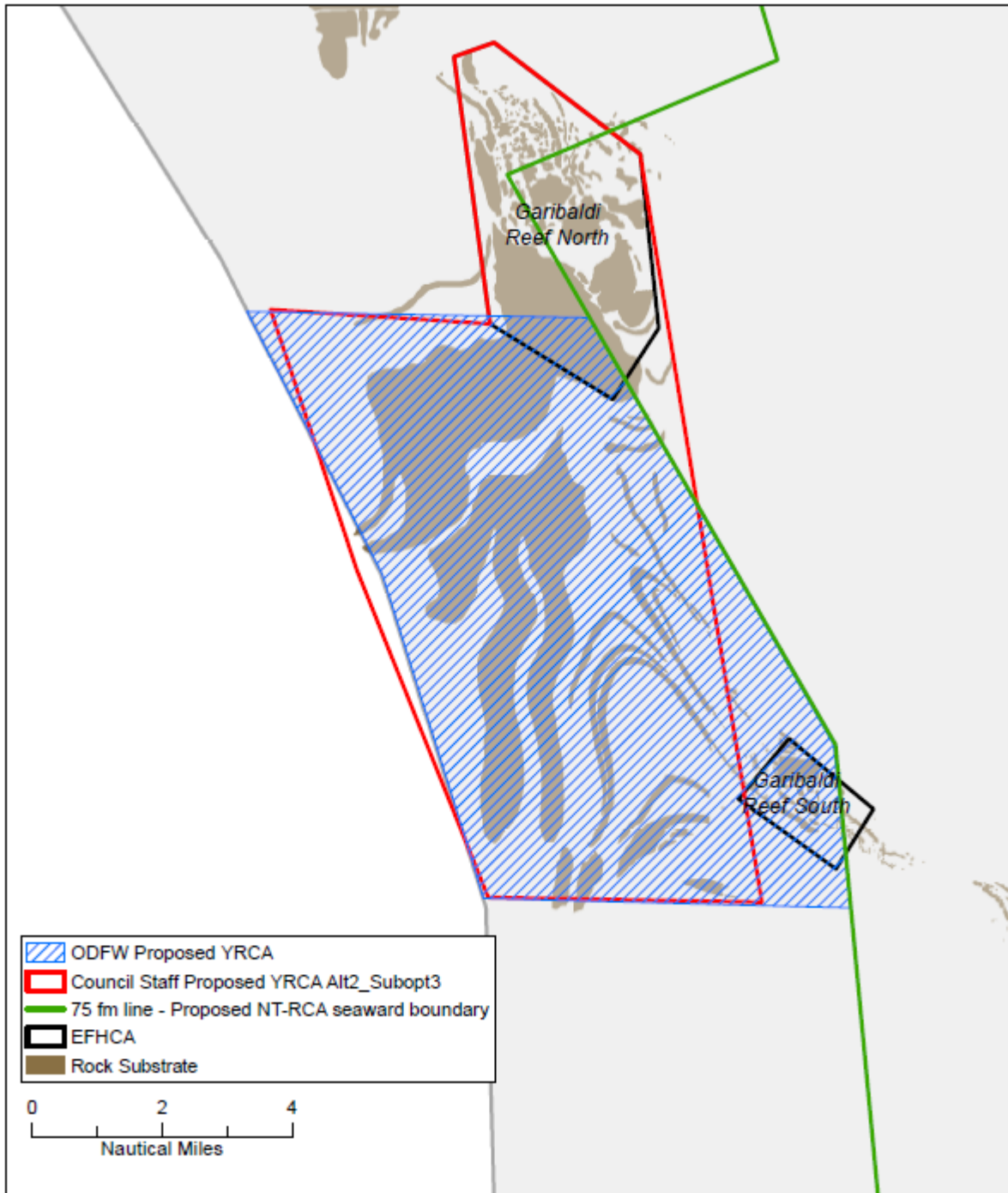


Figure 1. ODFW Proposed Tillamook Yelloweye Rockfish Conservation Area.

Newport Yelloweye Rockfish Conservation Area

The Newport Yelloweye Rockfish Conservation Area was changed to not include area that is seaward of 100 fathoms (Figure 2). The Newport YRCA is defined by straight lines connecting the following specific latitude and longitude coordinates in the order listed, starting from the top left point:

- 1) 44°46.00' N. lat.; 124°32.57' W. long.
 - 2) 44°46.00' N. lat.; 124°32.00' W. long.
 - 3) 44°42.00' N. lat.; 124°30.00' W. long.
 - 4) 44°39.00' N. lat.; 124°30.00' W. long.
 - 5) 44°39.00' N. lat.; 124°34.00' W. long.
 - 6) 44°43.16' N. lat.; 124°34.00' W. long.
 - 7) 44°44.54' N. lat.; 124°33.58' W. long.
- and connecting back to 44°46.00' N. lat.; 124°32.57' W. long.

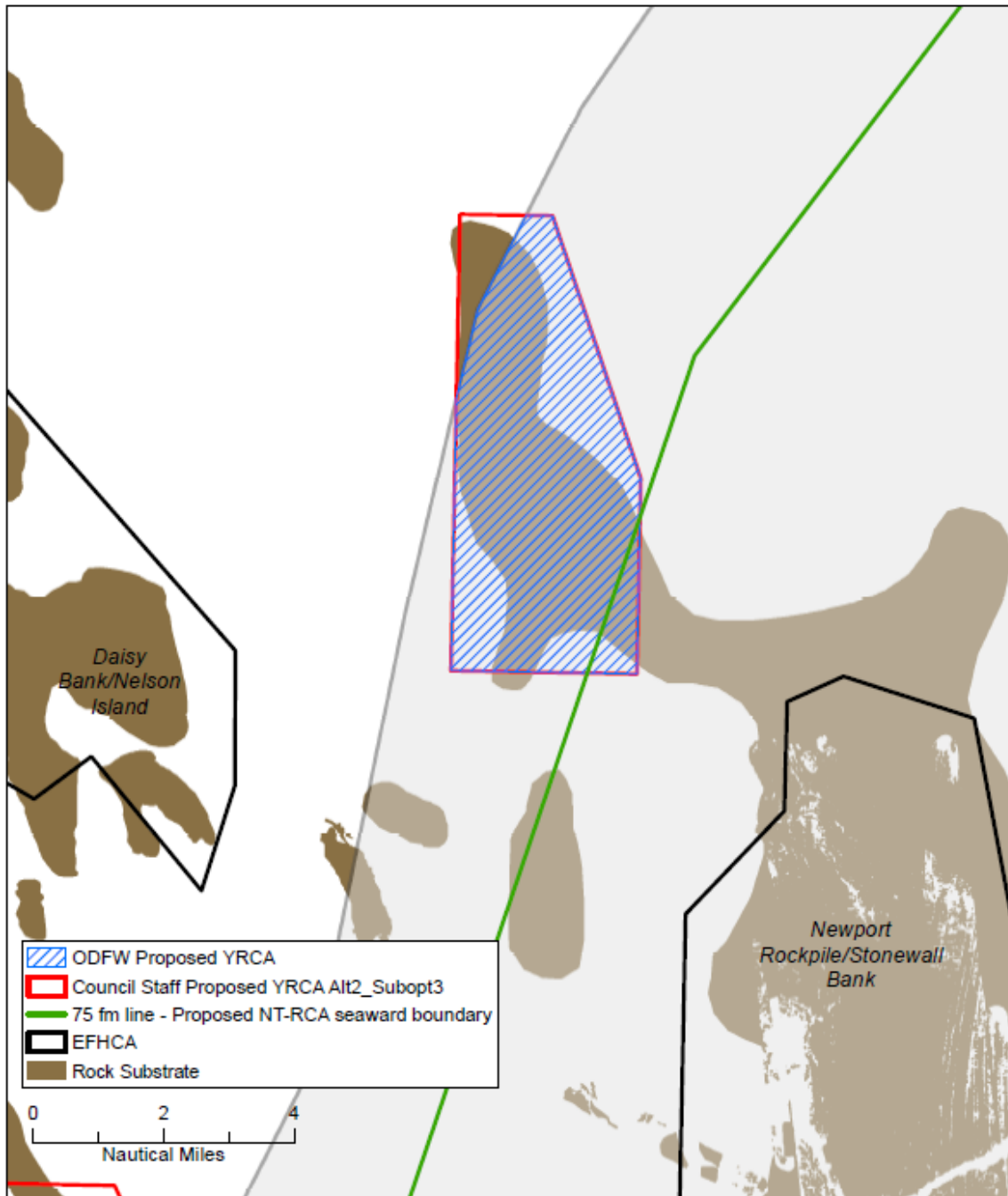


Figure 2. ODFW Proposed Newport Yelloweye Rockfish Conservation Area.

Florence Yelloweye Rockfish Conservation Area

The Florence YRCA was changed to not include area that is seaward of 100 fathoms (Figure 3). The Florence YRCA is defined by straight lines connecting the following specific latitude and longitude coordinates in the order listed, starting from the top left point:

- 1) 44°30.04' N. lat.; 124°42.31' W. long.
 - 2) 44°30.19' N. lat.; 124°40.46' W. long.
 - 3) 44°25.00' N. lat.; 124°37.00' W. long.
 - 4) 44°25.00' N. lat.; 124°45.00' W. long.
 - 5) 44°26.71' N. lat.; 124°45.00' W. long.
- and connecting back to 44°30.04' N. lat.; 124°42.31' W. long.

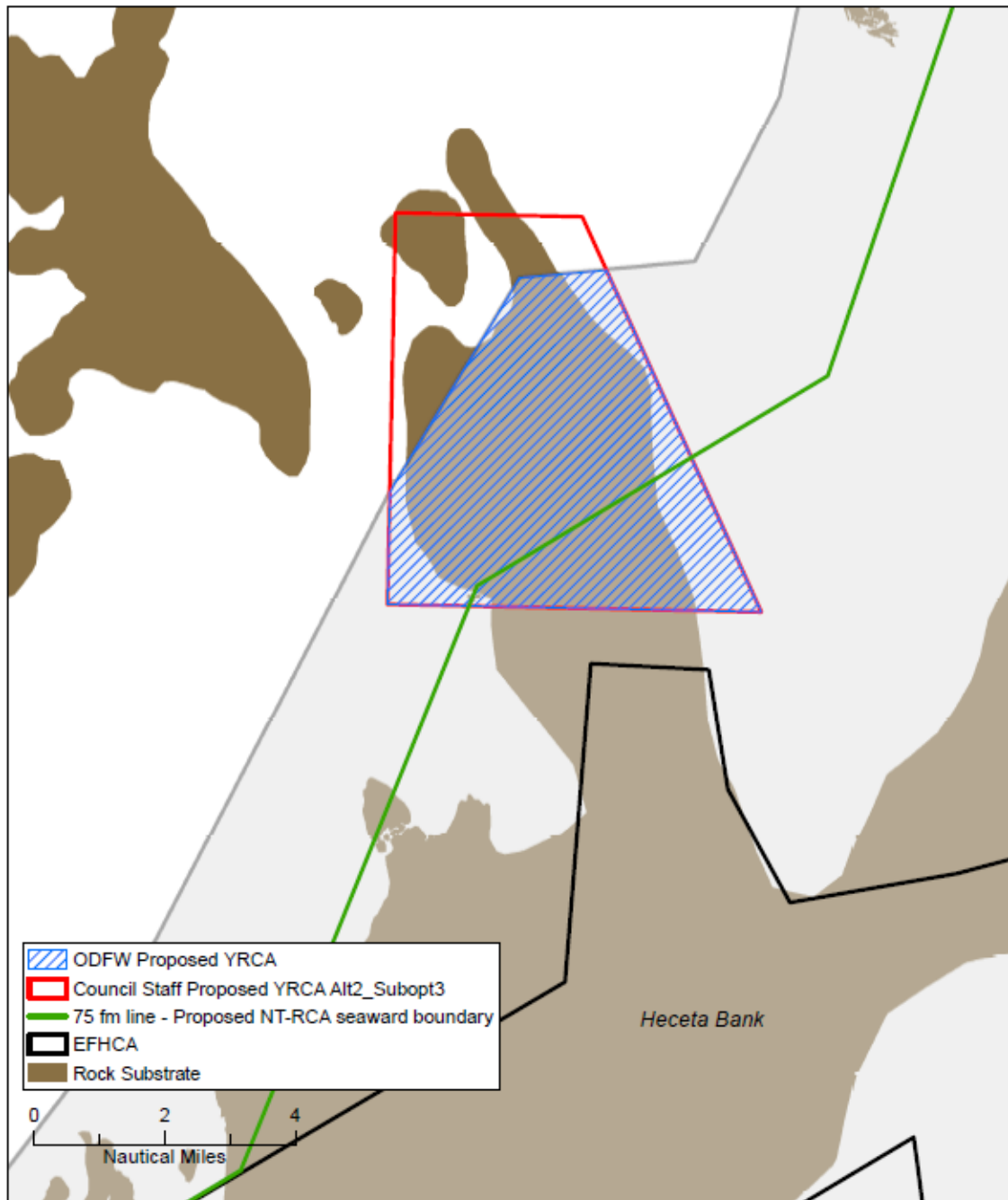


Figure 3. ODFW Proposed Florence Yelloweye Rockfish Conservation Area.

03/01/23