



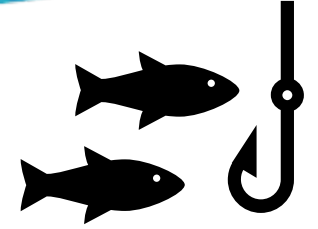
BOEM Bureau of
Ocean Energy Management

Fisheries Datasets

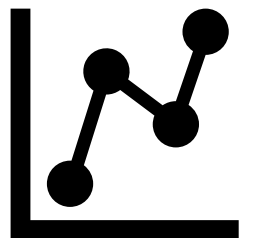
2 February 2023

Ad Hoc Marine Planning Committee

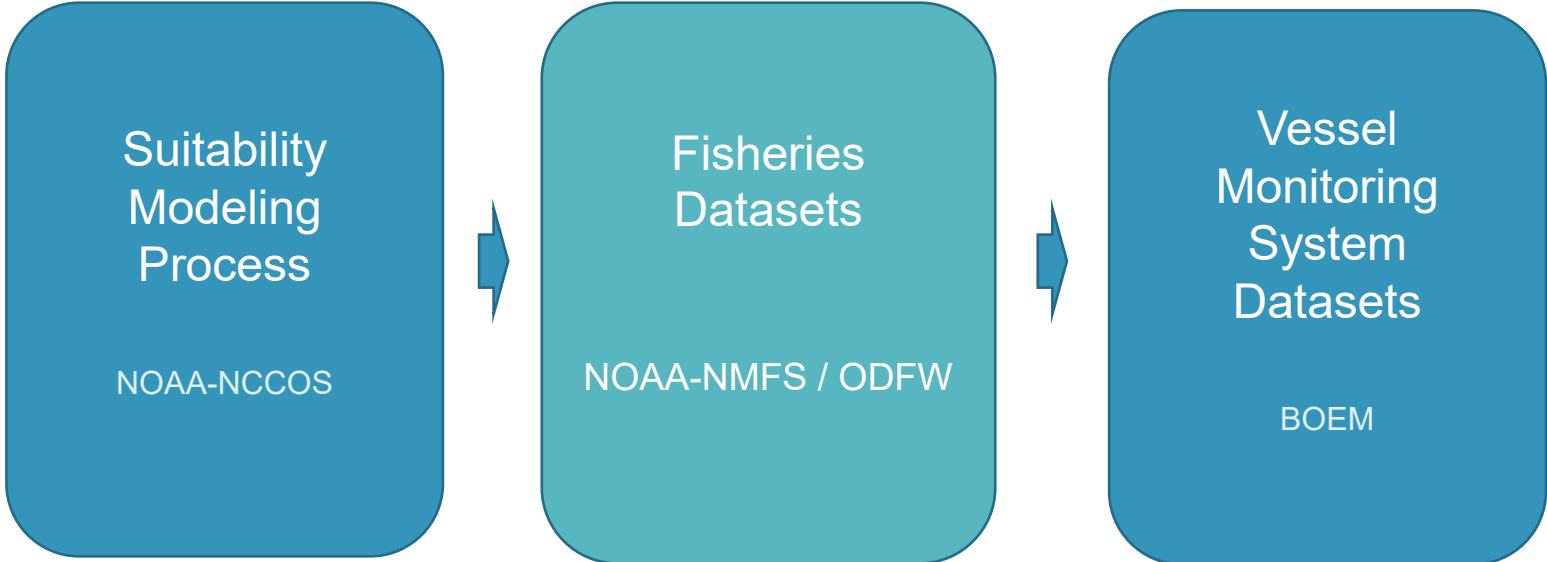
Meeting Objective:



- Today's meeting is focused on **fishing data**
- Provide information and receive feedback on the **data** and **modeling** that will inform next steps in BOEM's process
- BOEM was asked return to share the new VMS data



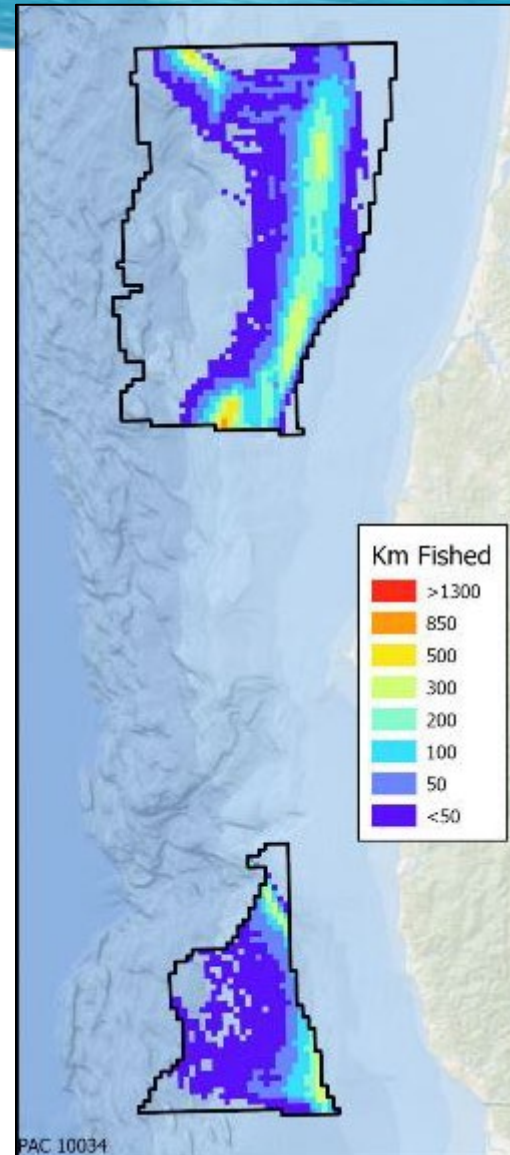
Our Presentations Today



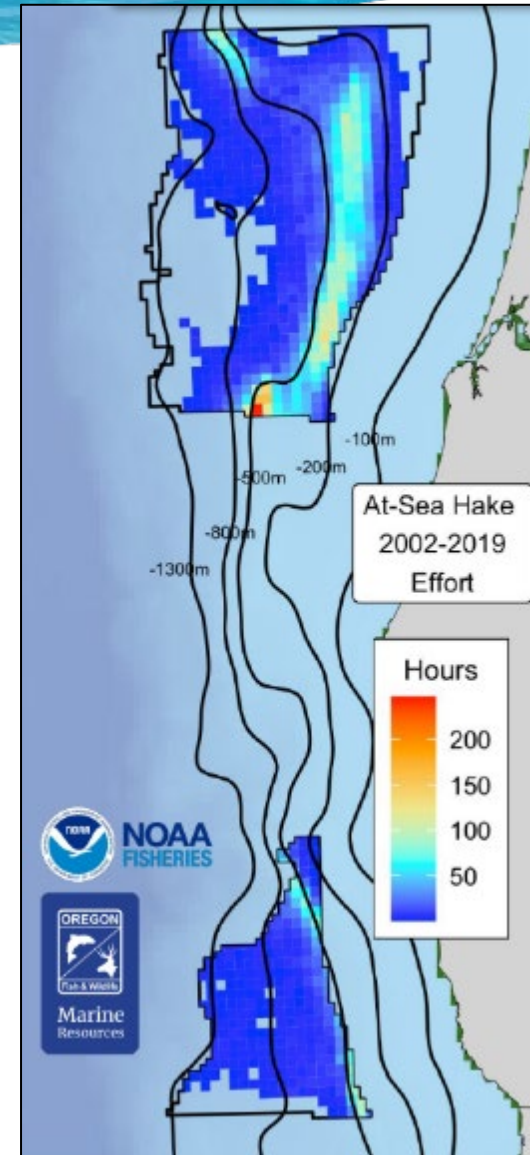
Datasets

- Fisheries Datasets – NMFS & ODFW
 - BOEM plans to use this dataset in the modeling
- Vessel Monitoring System (VMS) Fisheries Datasets Update – NOAA Office of Law Enforcement, Cal Poly, PSMFC, BOEM
- Available on OROWindMap soon

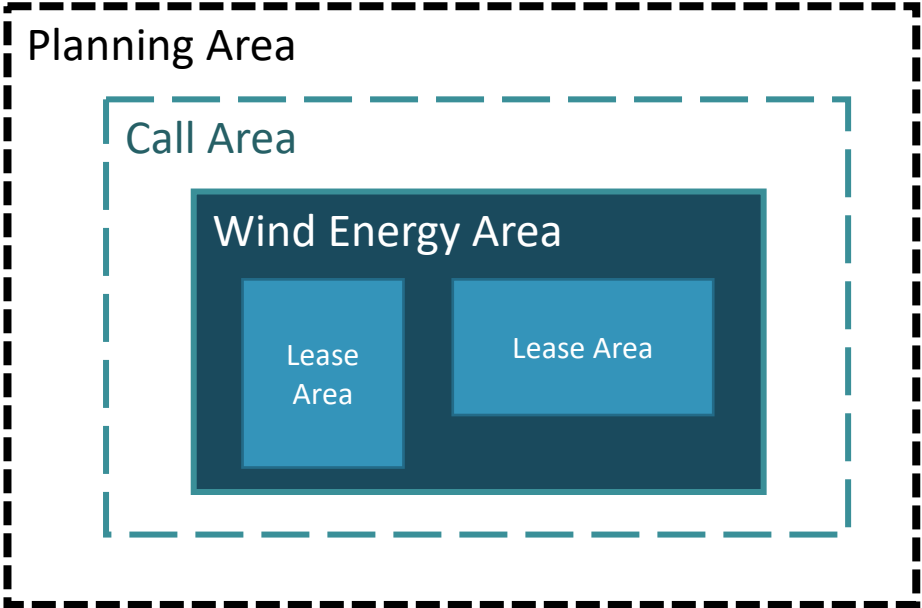
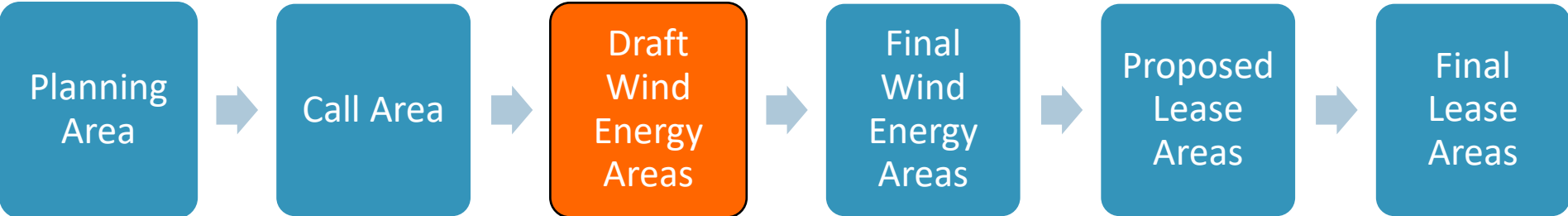
VMS 2010-2021



NMFS / ODFW

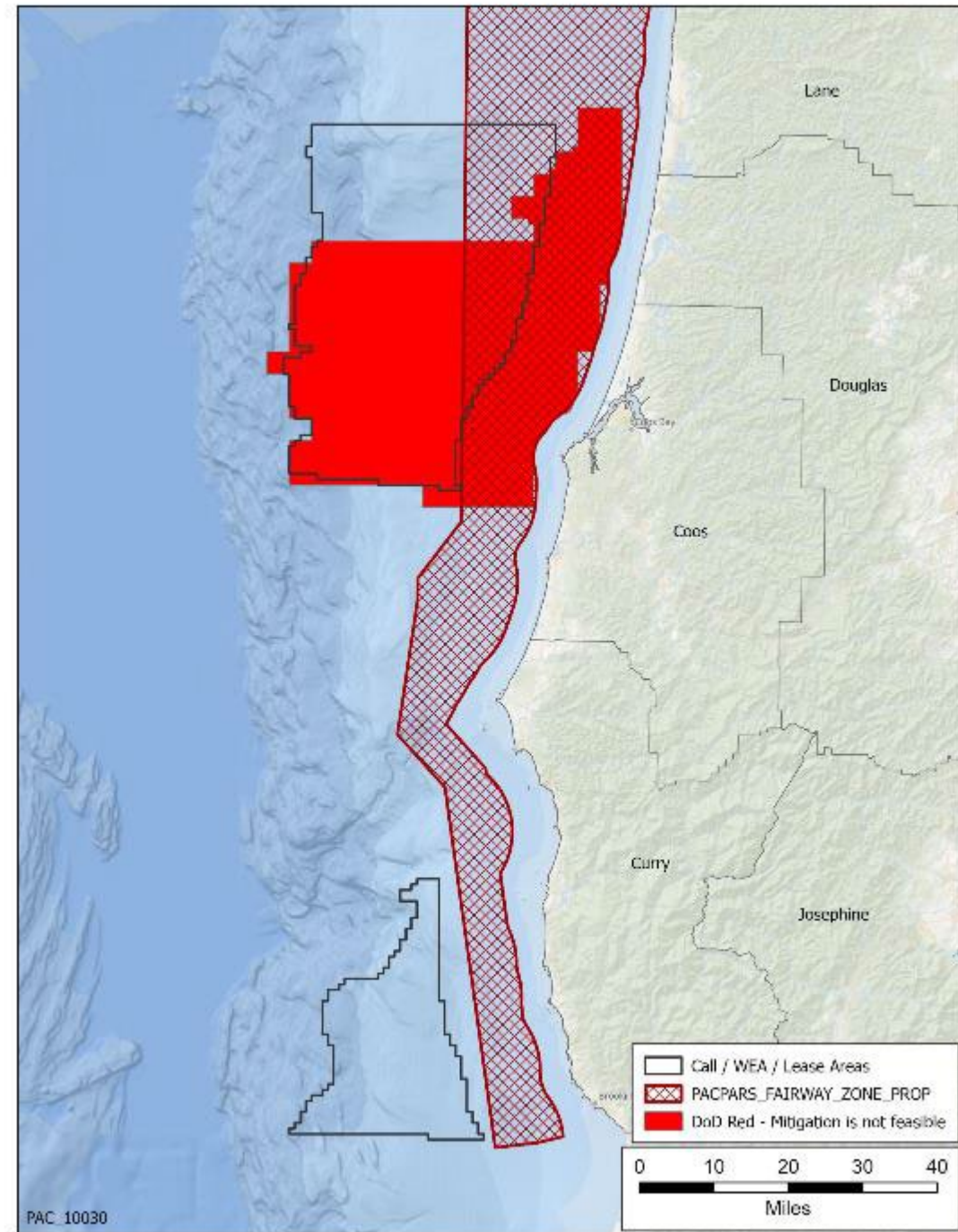


BOEM Planning Process



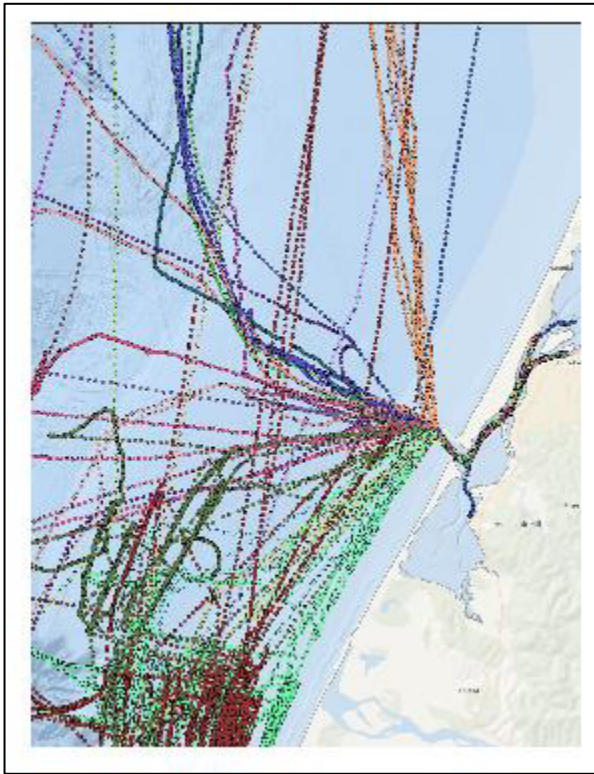
Constraints

- For our modeling, a **constraint** is an area completely restricted from OSW development.
- DoD Exclusion Zone
- PacPARS –
 - Coast Guard Vessel Traffic Lanes
- Call Area \approx 1,170,000 acres
- Unconstrained \approx 500,000 acres



Creating VMS / AIS datasets

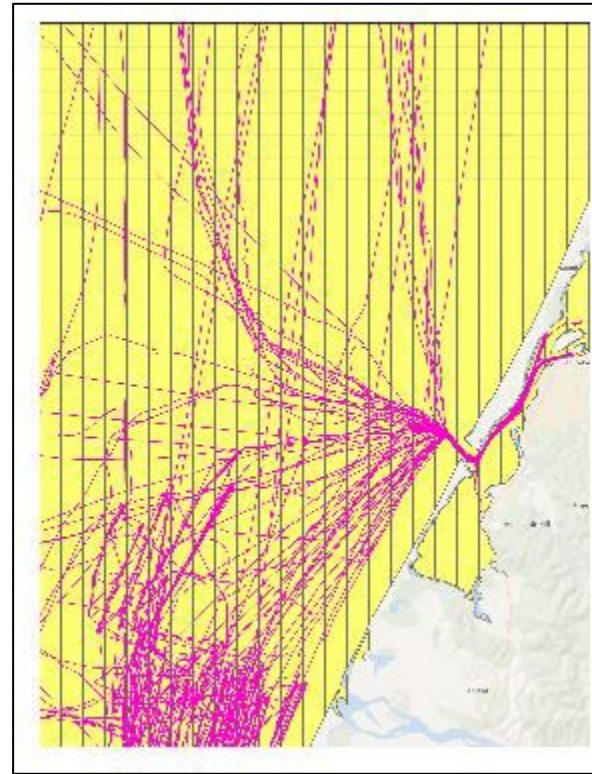
Points



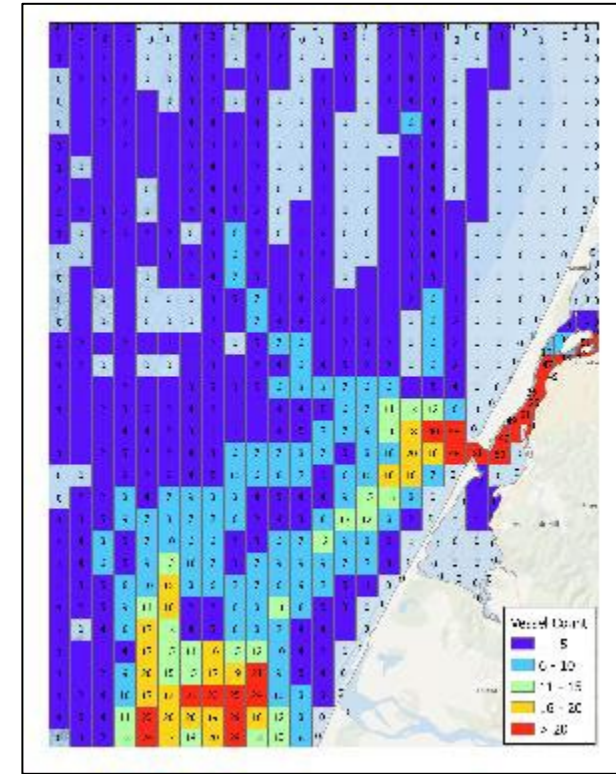
Connect into Lines



Overlay on Grid



Count Hits or Distance

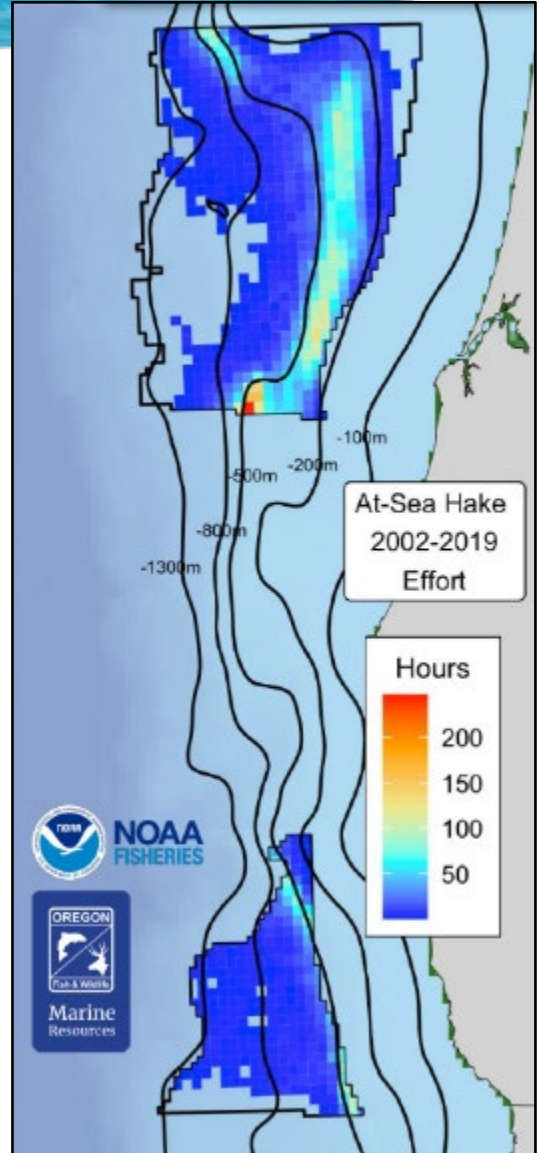
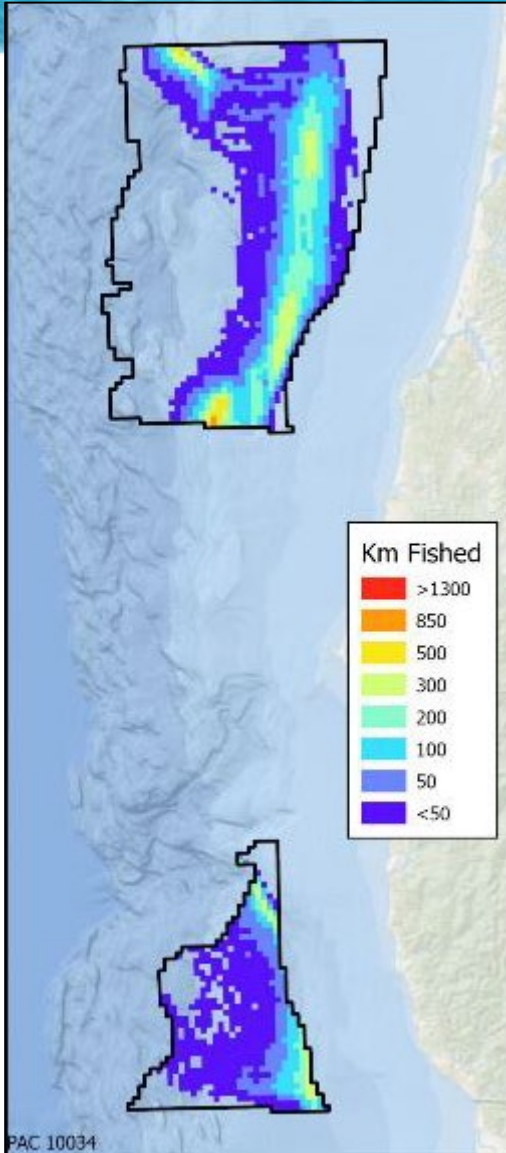
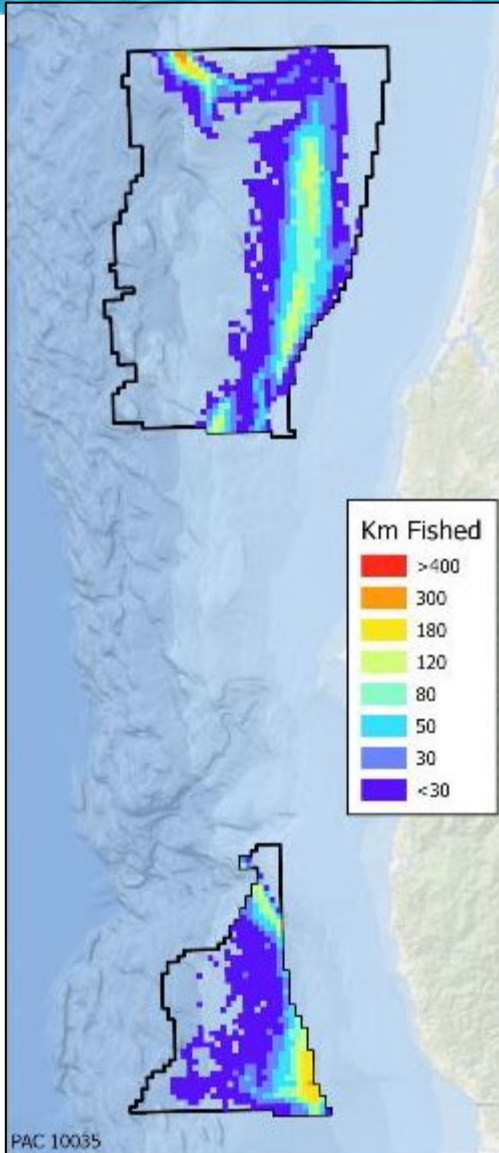
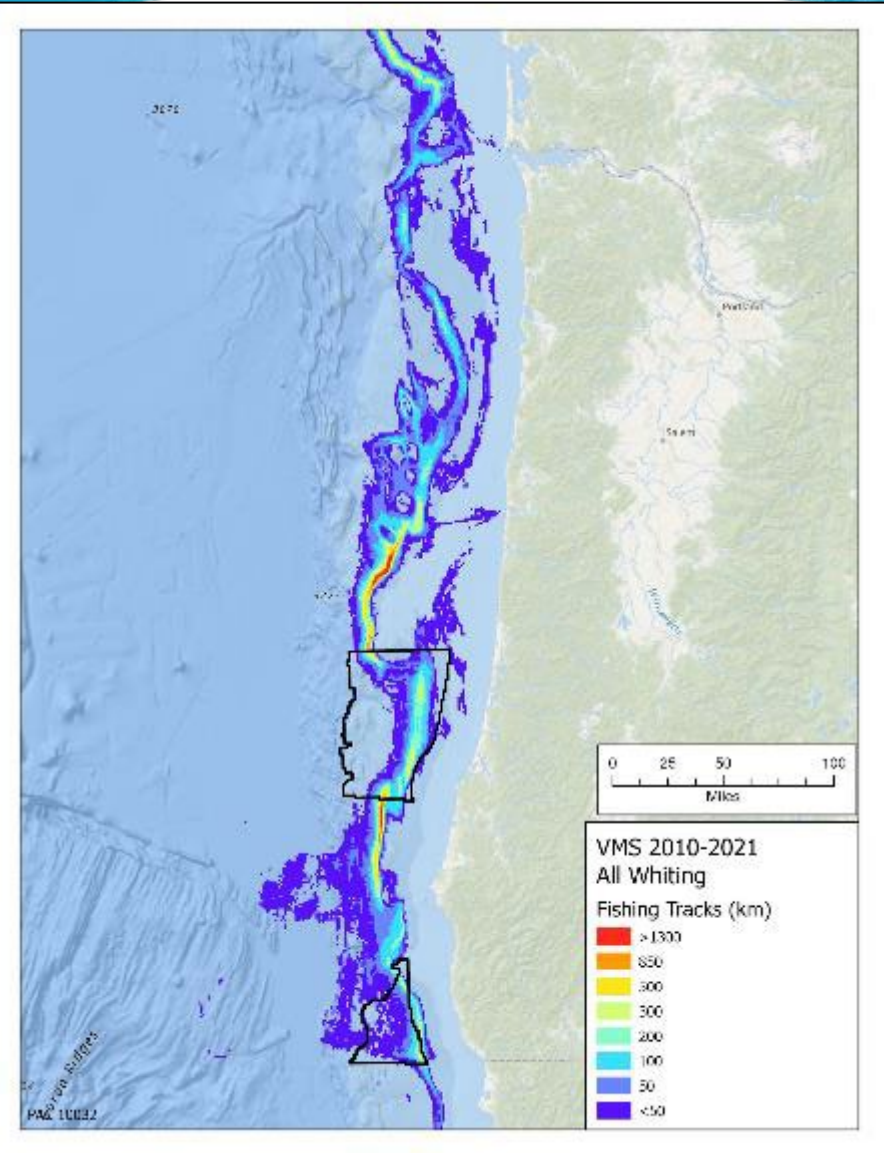


Whiting

VMS 2018-2021

VMS 2010-2021

NMFS ODFW

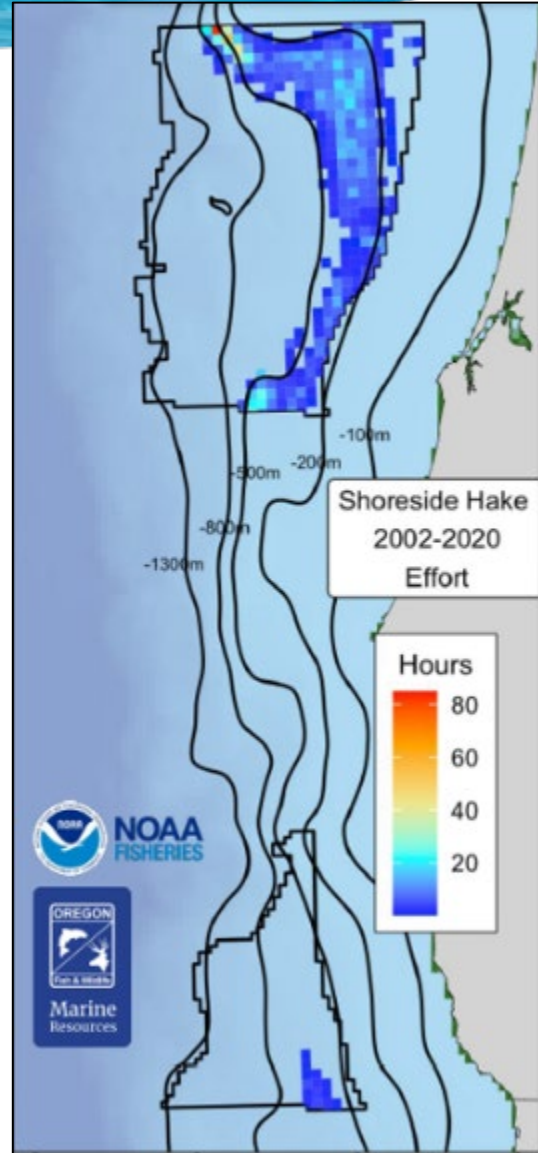
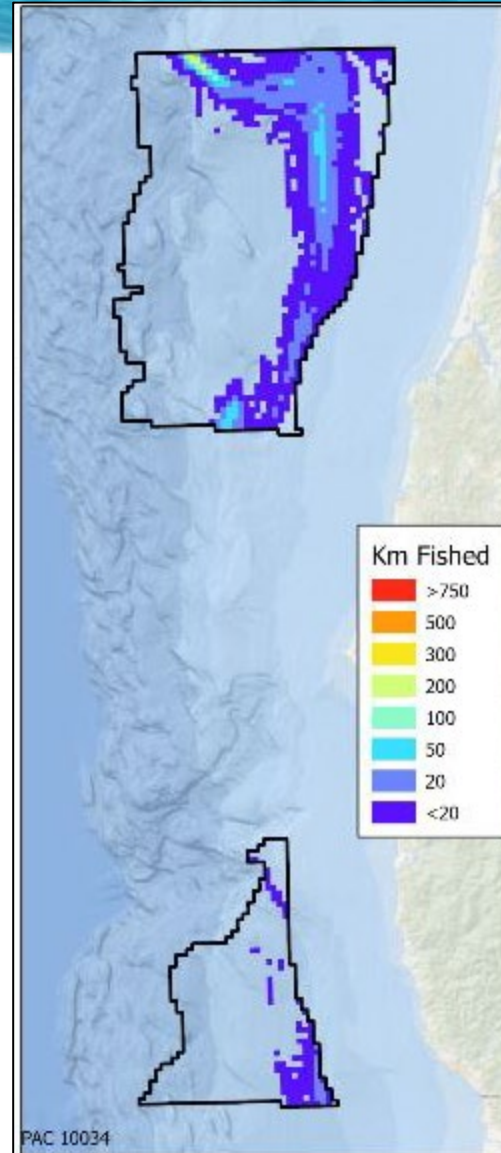
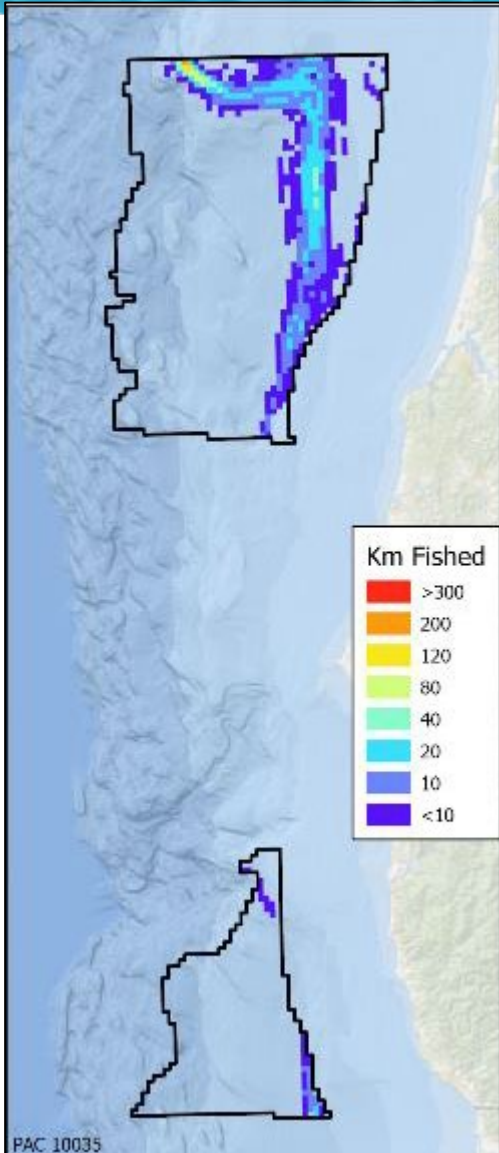
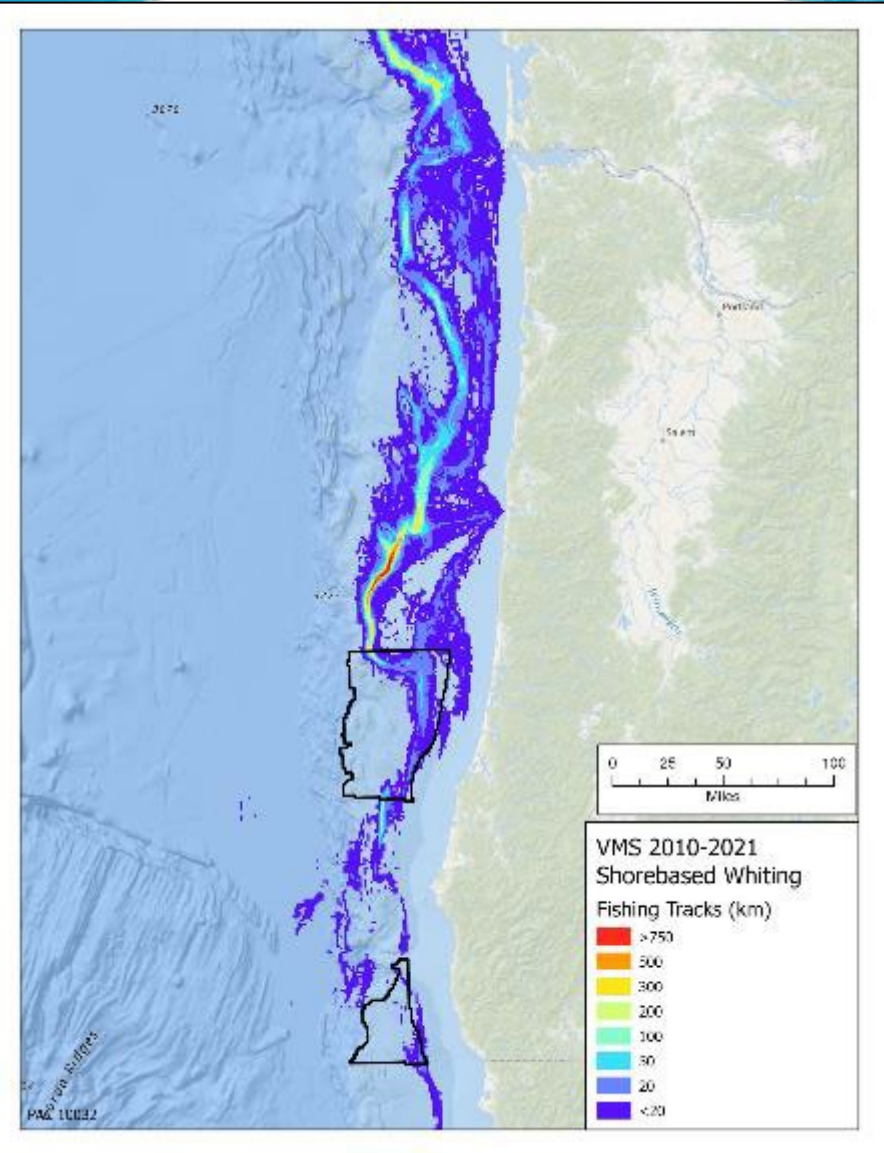


Shorebased Whiting

VMS 2018-2021

VMS 2010-2021

NMFS ODFW

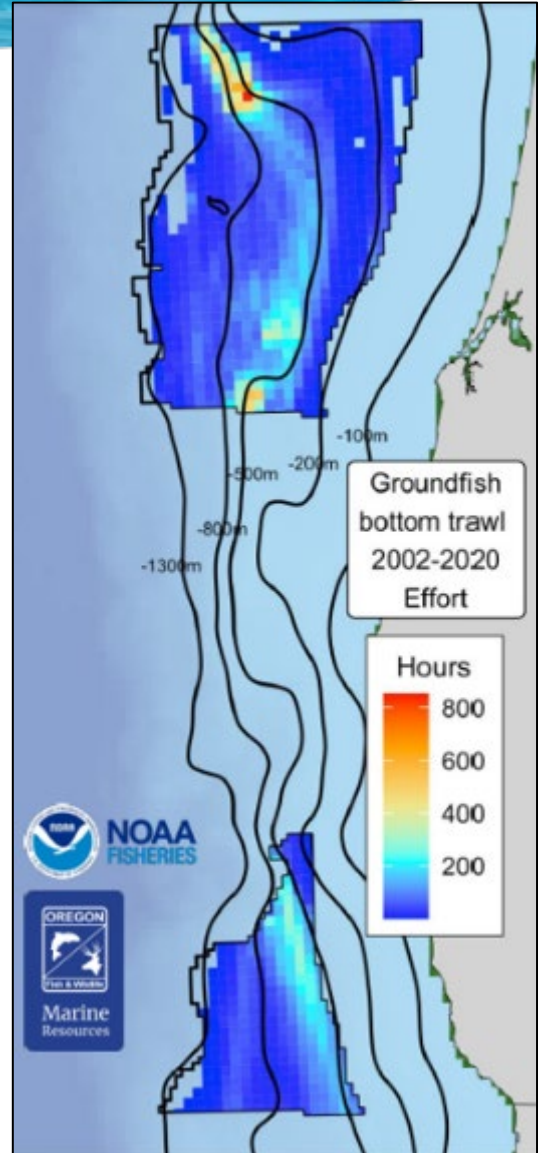
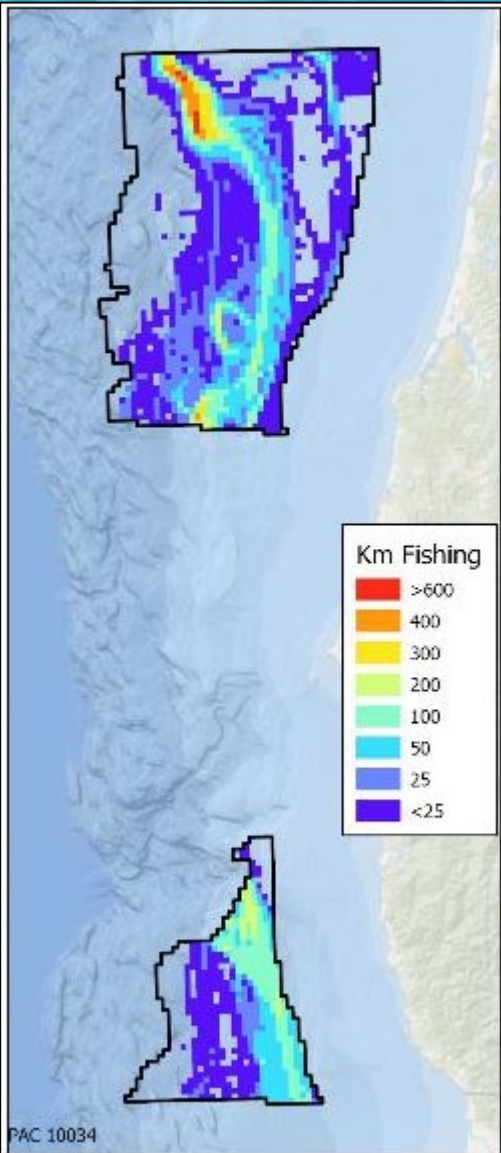
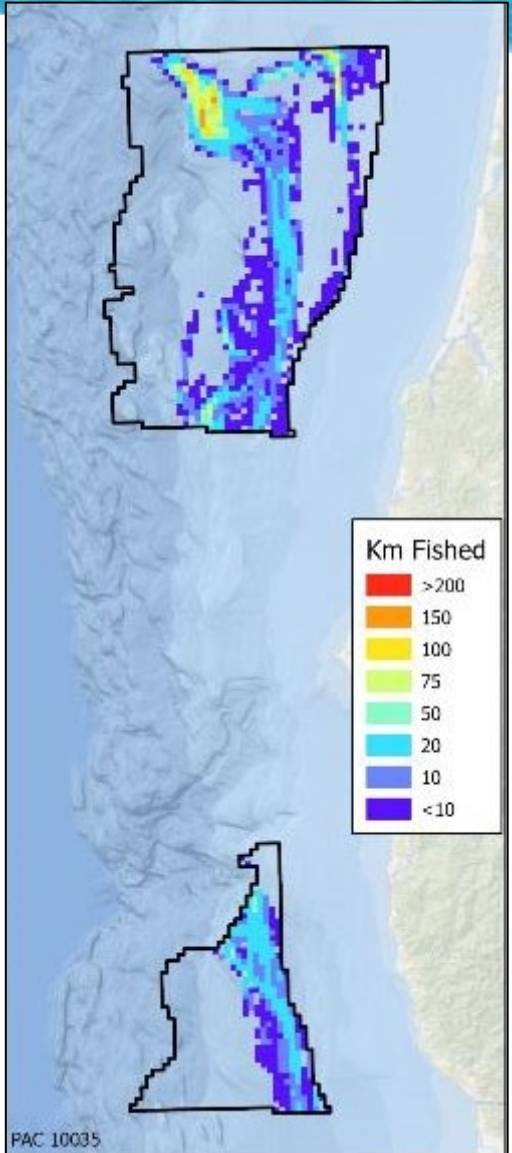
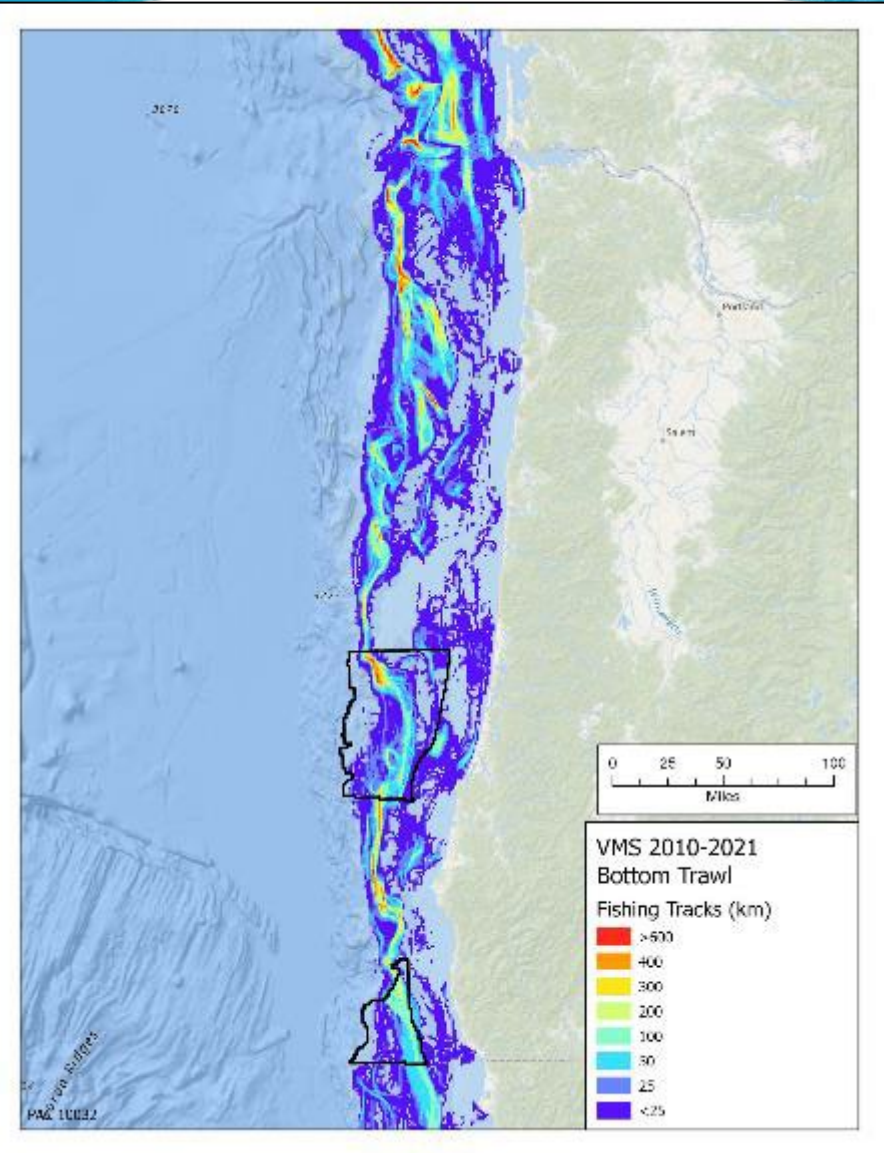


VMS Bottom Trawl

VMS 2018-2021

VMS 2010-2021

NMFS ODFW

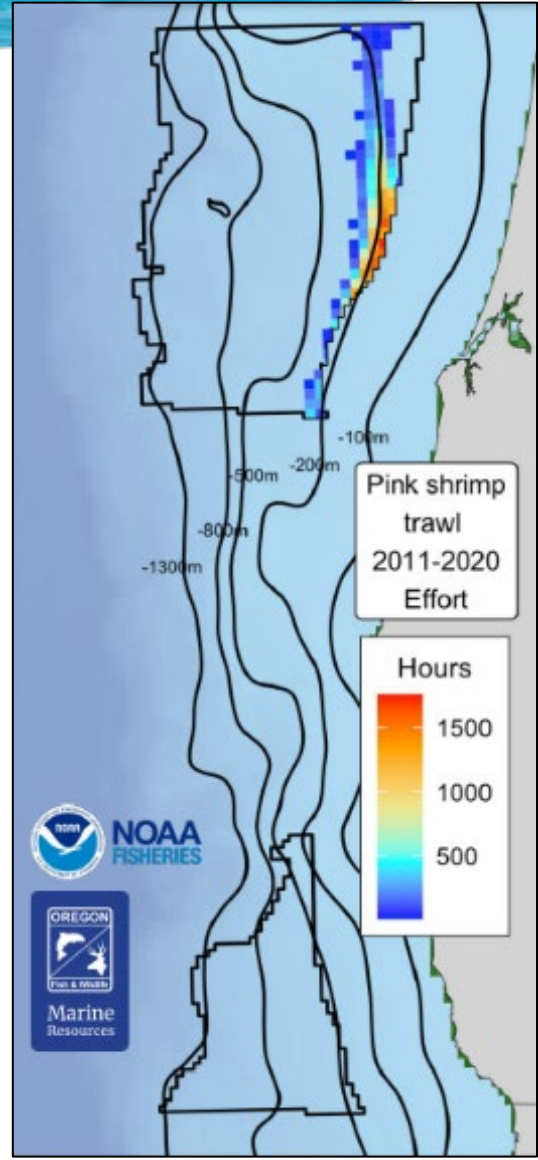
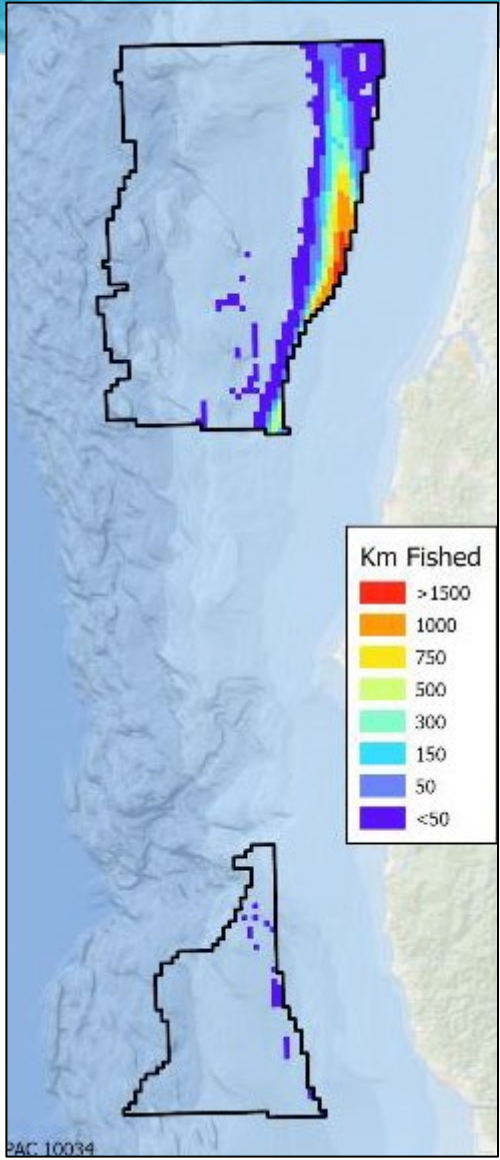
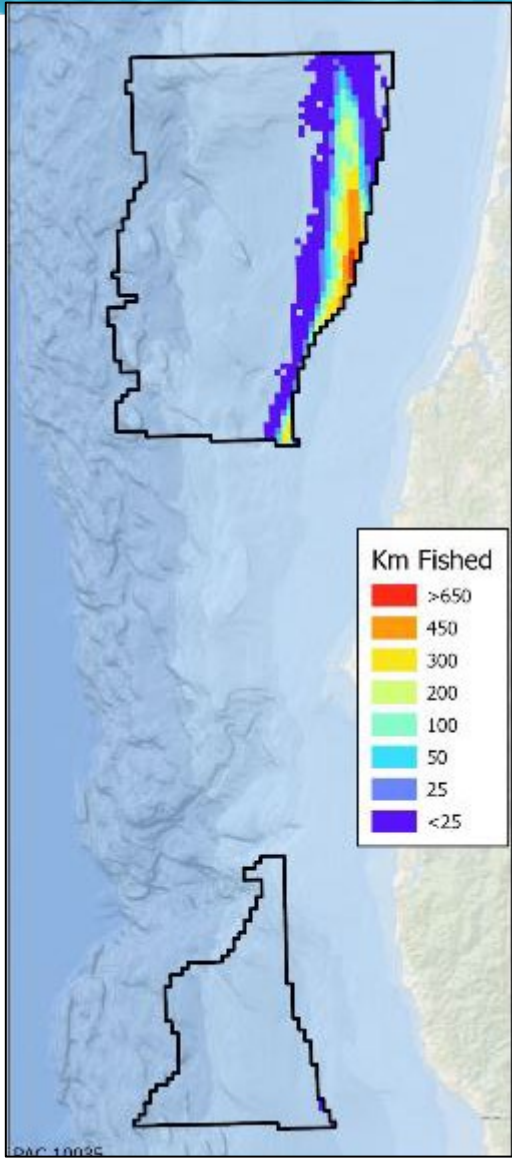
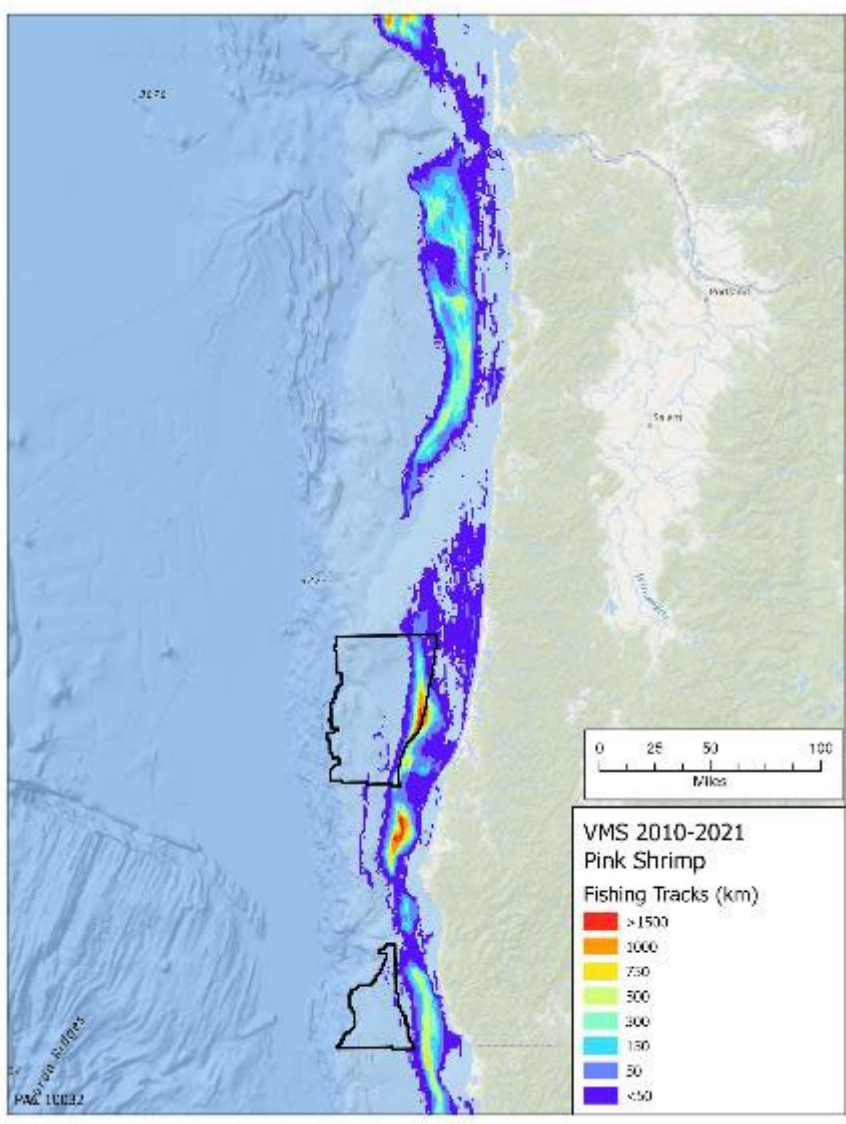


VMS Pink Shrimp

VMS 2018-2021

VMS 2010-2021

NMFS ODFW

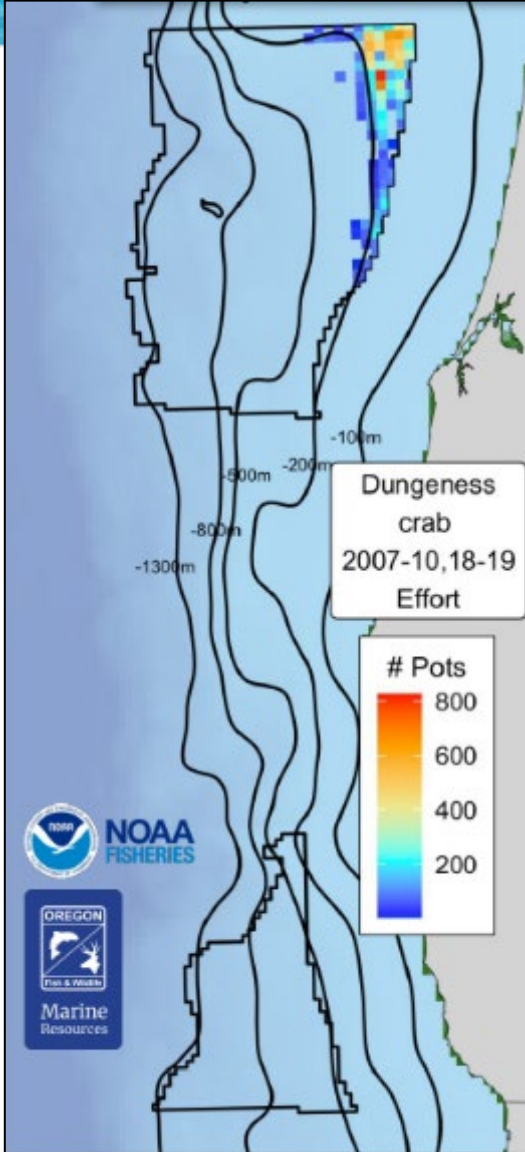
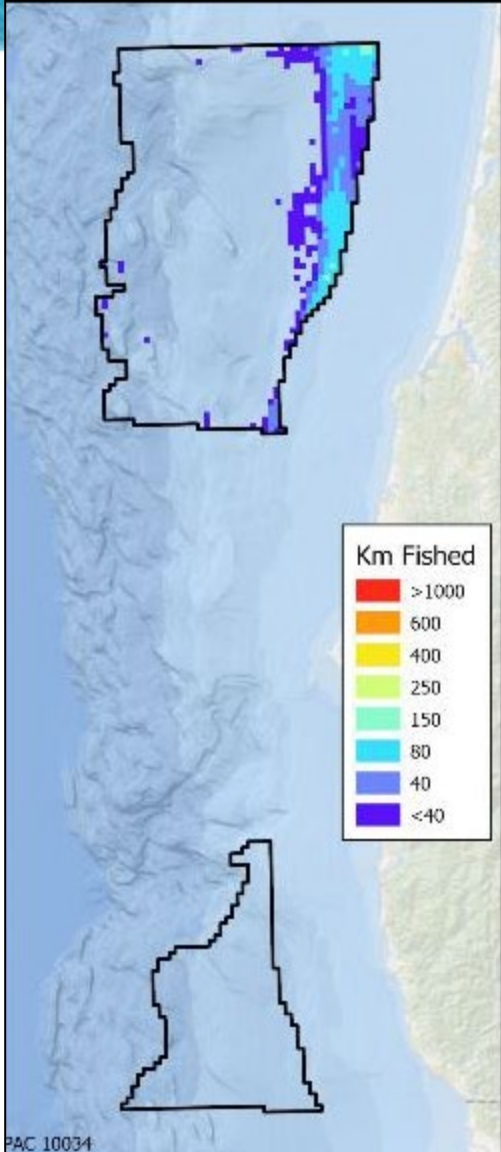
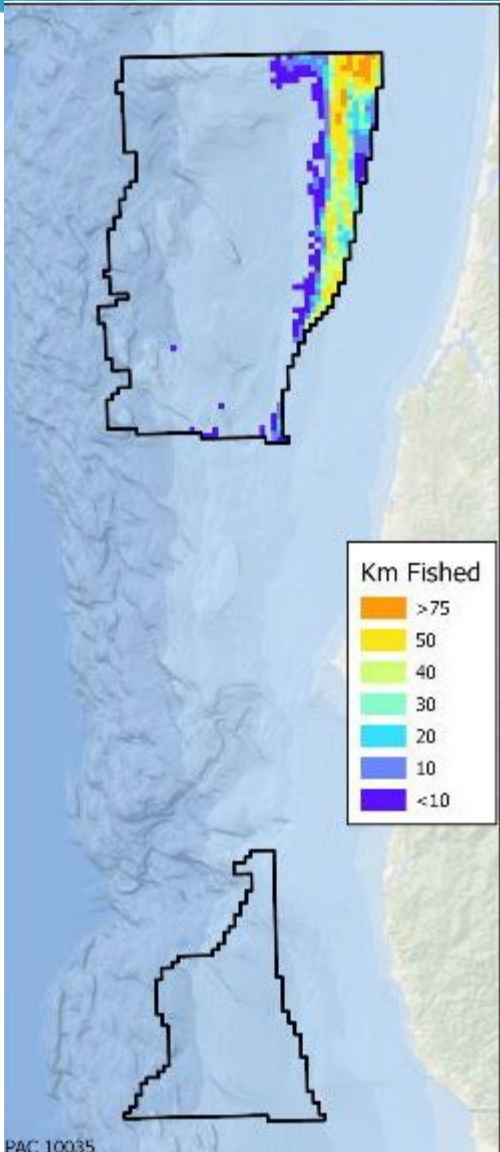
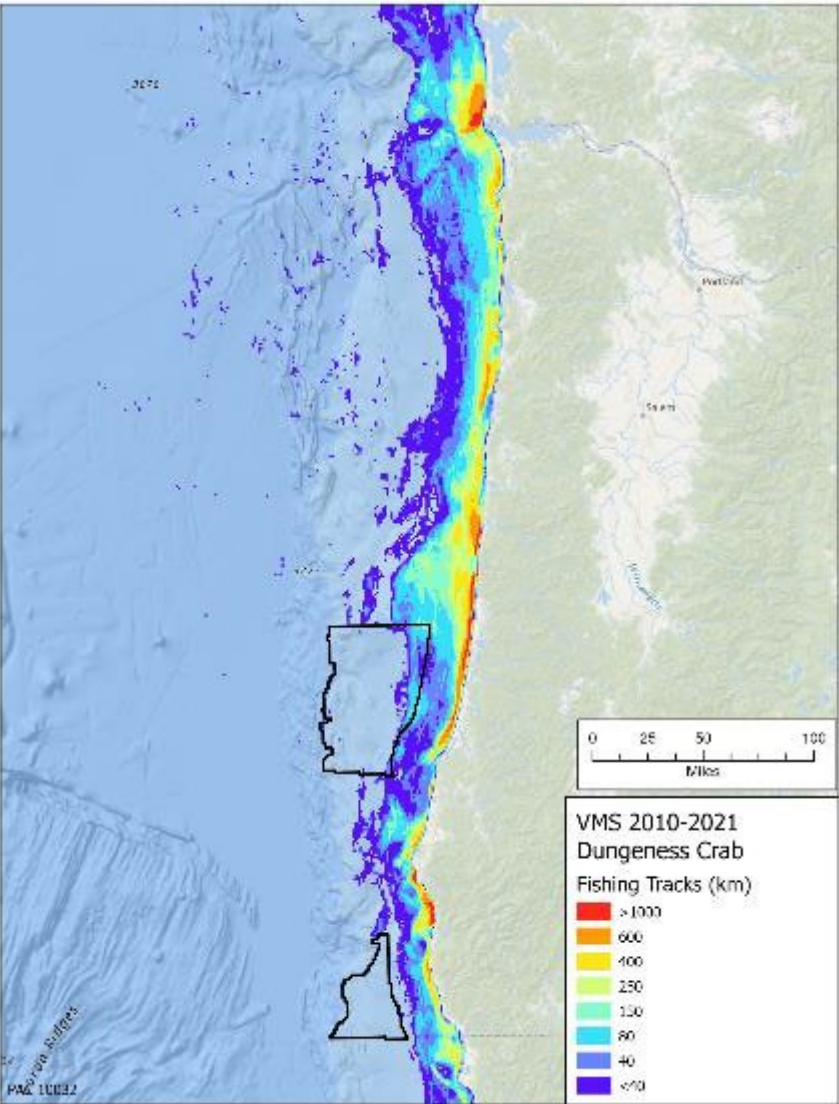


VMS Dungeness Crab

VMS 2018-2021

VMS 2010-2021

NMFS ODFW

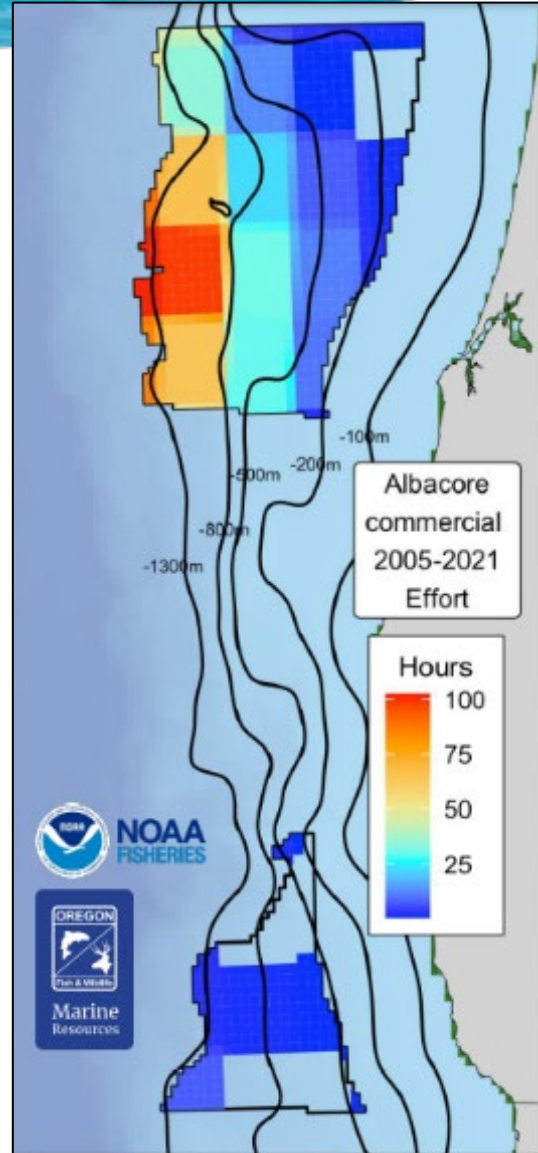
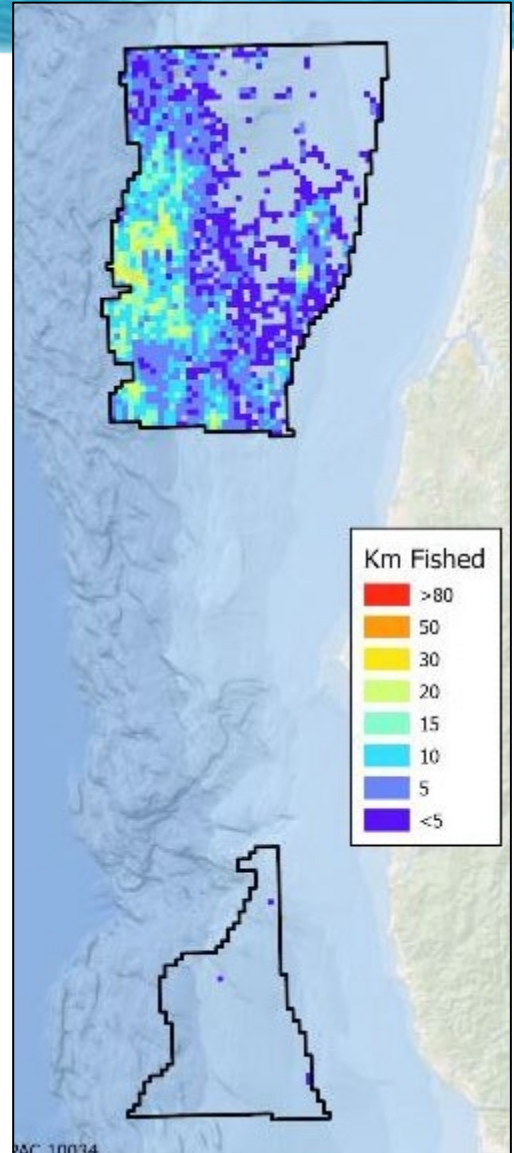
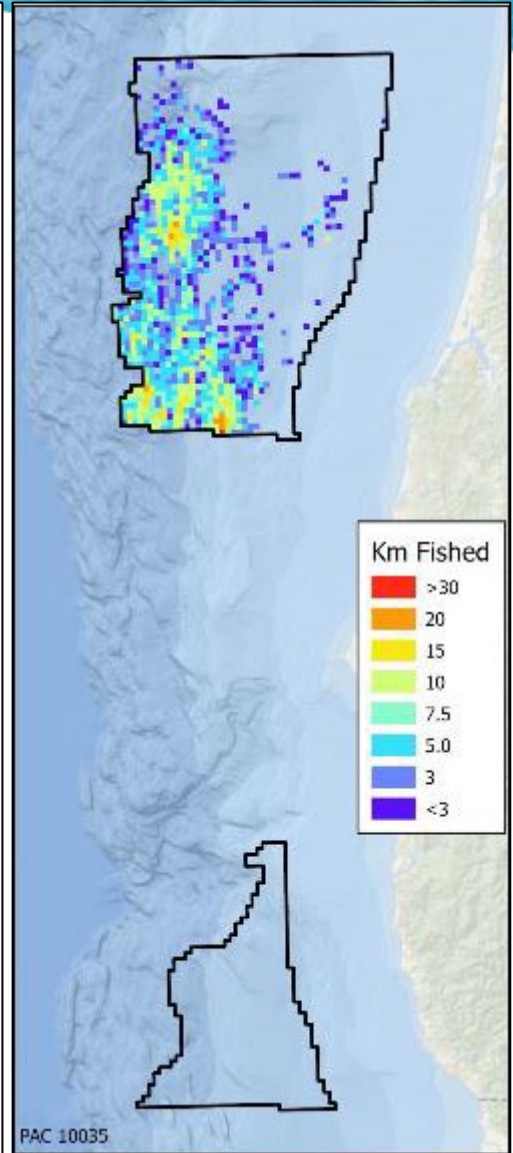
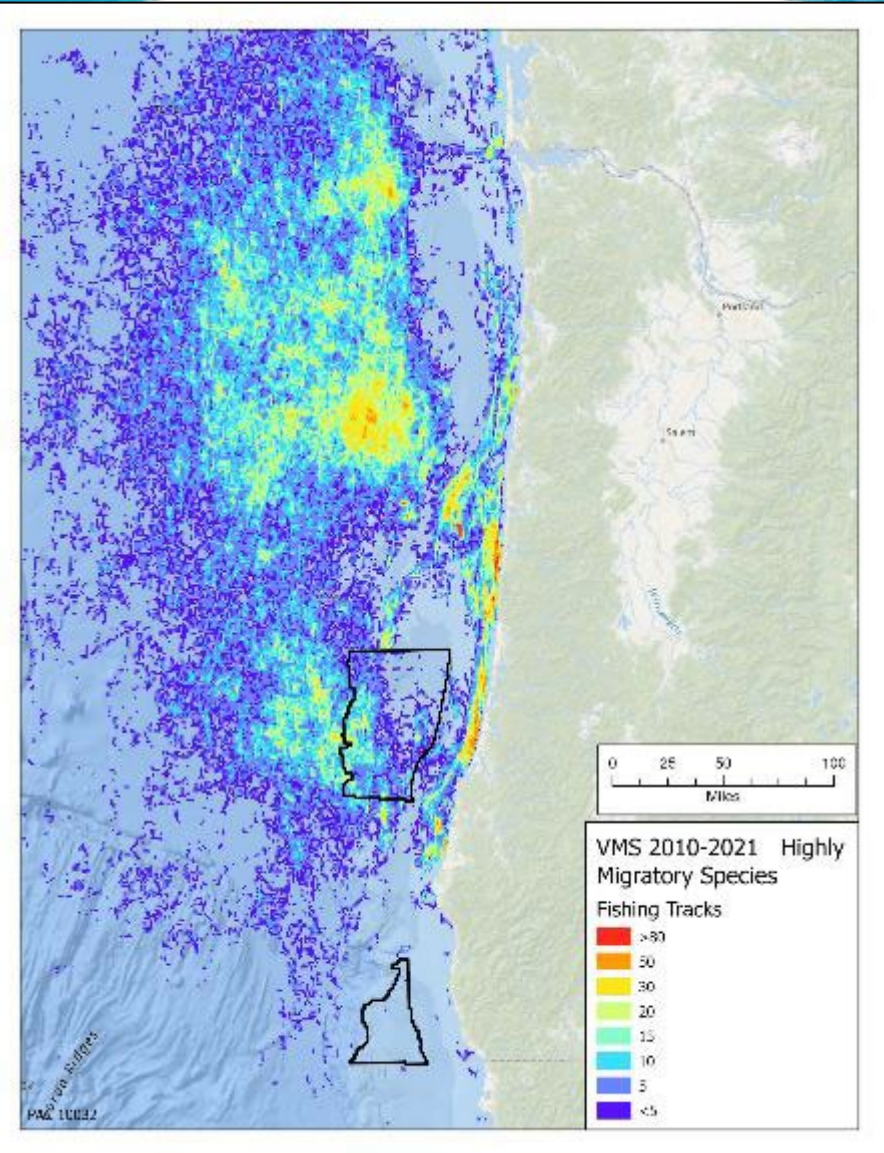


Highly Migratory Species

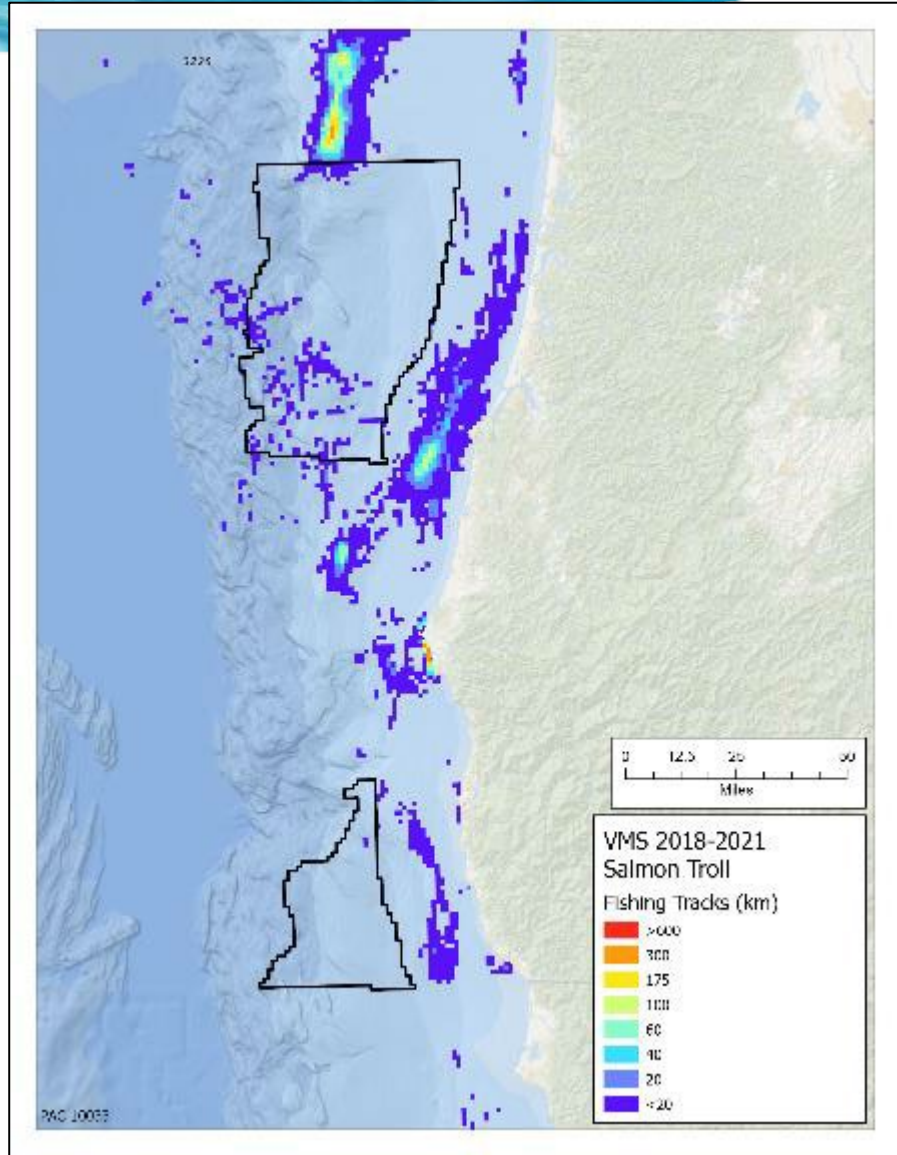
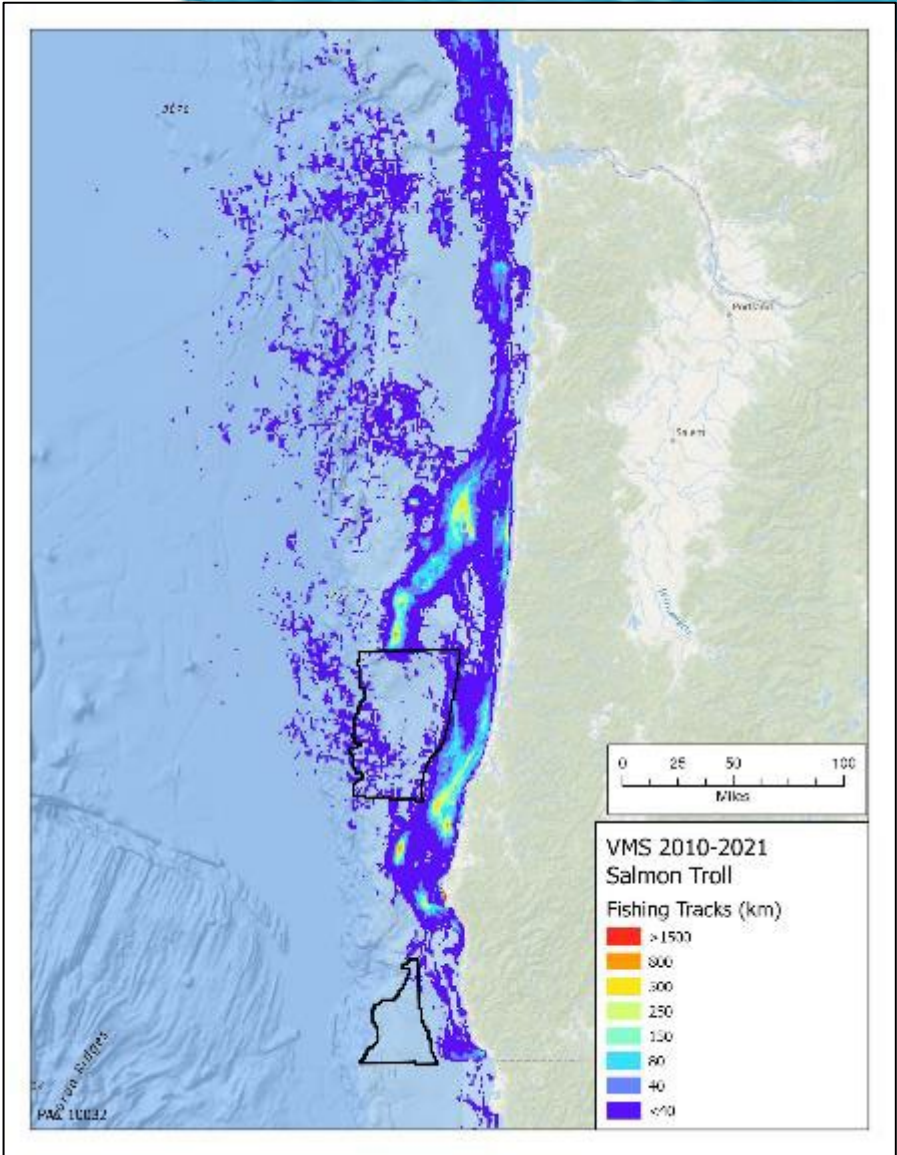
VMS 2018-2021

VMS 2010-2021

NMFS ODFW



VMS Salmon



Next Steps and Engagement Opportunities

- **Spatial modeling by NCCOS and BOEM complete**
 - Plan is to use NMFS / ODFW data in the model
 - VMS data as a check and for visualization purposes
- **Draft Wind Energy Areas (WEAs)**
 - Formal public notice in Federal Register
 - Maps and shapefiles will be available
 - NCCOS Modeling Report
 - 30-day public comment period
- **BOEM announces Final Wind Energy Areas**
- **Environmental Assessment Process and Public Involvement**



The background features a photograph of sand dunes under a clear blue sky. The dunes are in the foreground, with their ridges and valleys clearly visible. The sky is a deep, uniform blue. Overlaid on the image are several decorative, wavy, light blue lines that sweep across the frame from the bottom left towards the right, creating a sense of movement and depth.

Thank you

Frank.Pendleton@boem.gov