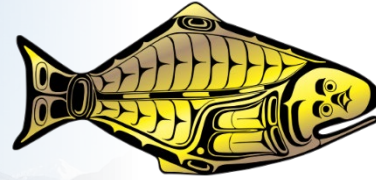


INTERNATIONAL PACIFIC



HALIBUT COMMISSION

Agenda Item C.1.a  
Supplemental IPHC Presentation 1  
March 2023

# Outcomes of the 99<sup>th</sup> Session of the IPHC Annual Meeting (AM099)

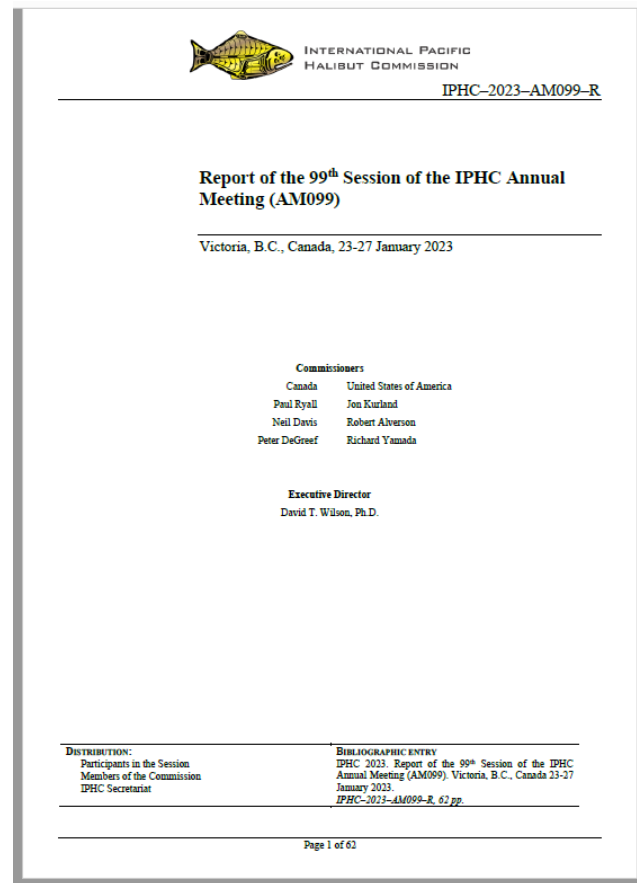
PFMC meeting  
Agenda item C1  
5 March 2023



# 99<sup>th</sup> Session of the IPHC Annual Meeting (AM099)

- 23 - 27 January 2023
- Held in Victoria, BC with remote access option (152 participants)
- Open to public
- AM099 Report: [IPHC-2023-AM099-R](#)
- AM099 webpage:

<https://www.iphc.int/venues/details/99th-session-of-the-iphc-annual-meeting-am099>



# Mortality limits for 2023

IPHC Regulatory Area	Tonnes	Million Pounds
Area 2A (California, Oregon, and Washington)	748	1.65
Area 2B (British Columbia)	3,075	6.78
Area 2C (southeastern Alaska)	2,654	5.85
Area 3A (central Gulf of Alaska)	5,479	12.08
Area 3B (western Gulf of Alaska)	1,665	3.67
Area 4A (eastern Aleutians)	785	1.73
Area 4B (central and western Aleutians)	617	1.36
Areas 4CDE (Bering Sea)	1,746	3.85
<b>Total</b>	<b>16,769</b>	<b>36.97</b>



# Mortality limits for 2022 to 2023

<b>Contracting Party IPHC Regulatory Area</b>	<b>2022 TCEY (Mlbs)</b>	<b>2023 TCEY (Mlbs)</b>	<b>Change</b>
<b>USA: 2A</b>	1.65	1.65	0.0%
<b>Canada: 2B</b>	7.56	6.78	-10.3%
<b>USA: 2C</b>	5.91	5.85	-1.0%
<b>USA: 3A</b>	14.55	12.08	-17.0%
<b>USA: 3B</b>	3.9	3.67	-5.9%
<b>USA: 4A</b>	2.1	1.73	-17.6%
<b>USA: 4B</b>	1.45	1.36	-6.2%
<b>USA: 4CDE</b>	4.1	3.85	-6.1%
<b>Total (IPHC Convention Area)</b>	<b>41.22</b>	<b>36.97</b>	<b>-10.3%</b>



# 2023 Mortality limits: detailed projections

Sector	IPHC Regulatory Area								
	2A	2B	2C	3A	3B	4A	4B	4CDE	Total
Commercial discards	0.05	0.18	NA	NA	0.29	0.05	0.01	0.08	0.66
<b>O26 Non-directed discards</b>	0.08	0.24	0.06	0.39	0.27	0.25	0.13	1.72	3.13
Recreational	NA	0.04	1.14	1.2	0.01	0.01	0	0	2.4
Subsistence	NA	0.41	0.29	0.18	0.01	0.01	0	0.04	0.94
<b>Total non-FCEY</b>	0.13	0.86	1.49	1.77	0.58	0.32	0.14	1.83	7.13
Commercial discards	NA	NA	0.15	0.58	NA	NA	NA	NA	0.73
Recreational	0.62	0.89	0.8	1.89	NA	NA	NA	NA	4.19
Subsistence	0.02	NA	NA	NA	NA	NA	NA	NA	0.02
<b>Commercial landings</b>	0.88	5.03	3.41	7.84	3.09	1.41	1.22	2.02	24.9
<b>Total FCEY</b>	<b>1.52</b>	<b>5.92</b>	<b>4.36</b>	<b>10.31</b>	<b>3.09</b>	<b>1.41</b>	<b>1.22</b>	<b>2.02</b>	<b>29.84</b>
							<b>4C FCEY</b>	0.9	
							<b>4D FCEY</b>	0.9	
							<b>4E FCEY</b>	0.22	
<b>TCEY</b>	<b>1.65</b>	<b>6.78</b>	<b>5.85</b>	<b>12.08</b>	<b>3.67</b>	<b>1.73</b>	<b>1.36</b>	<b>3.85</b>	<b>36.97</b>
<b>U26 Non-directed discards</b>	0	0.03	0	0.24	0.1	0.1	0.01	0.88	1.37
<b>Total</b>	1.65	6.81	5.85	12.32	3.77	1.83	1.37	4.73	38.34



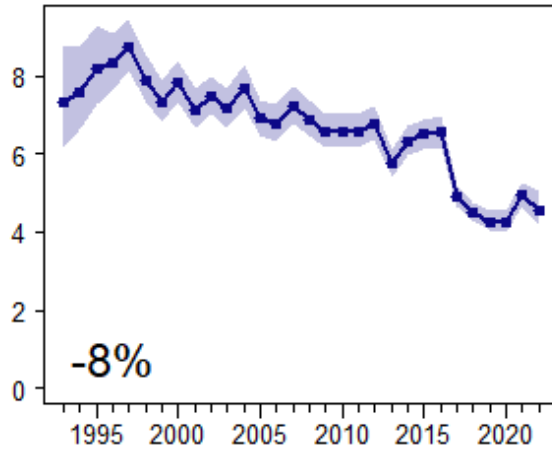
# Stock assessment data summary

- All coastwide indices were down strongly in 2022
  - Lowest fishery performance/efficiency in 3 decades
- Both the FISS and fishery have largely transitioned to the 2012 year-class from the 2005 and older year-classes
- Very low recruitment from 2006-2011 continues to reduce the short-term productivity of the stock

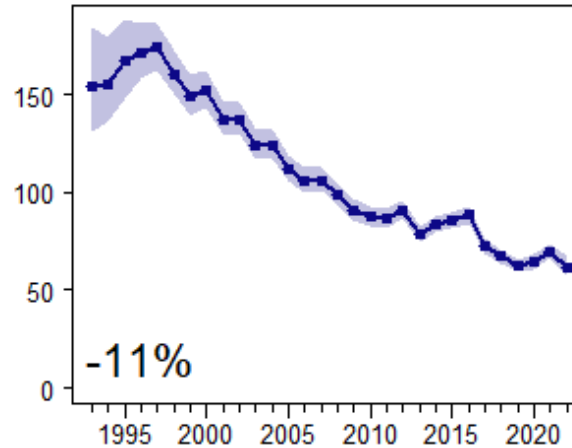


# Modelled coastwide survey trends

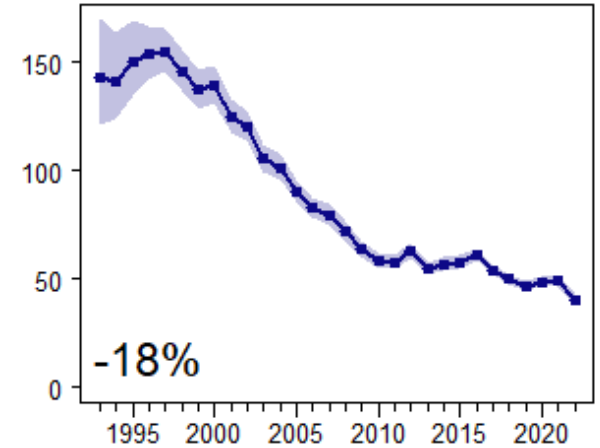
## Numbers/skate



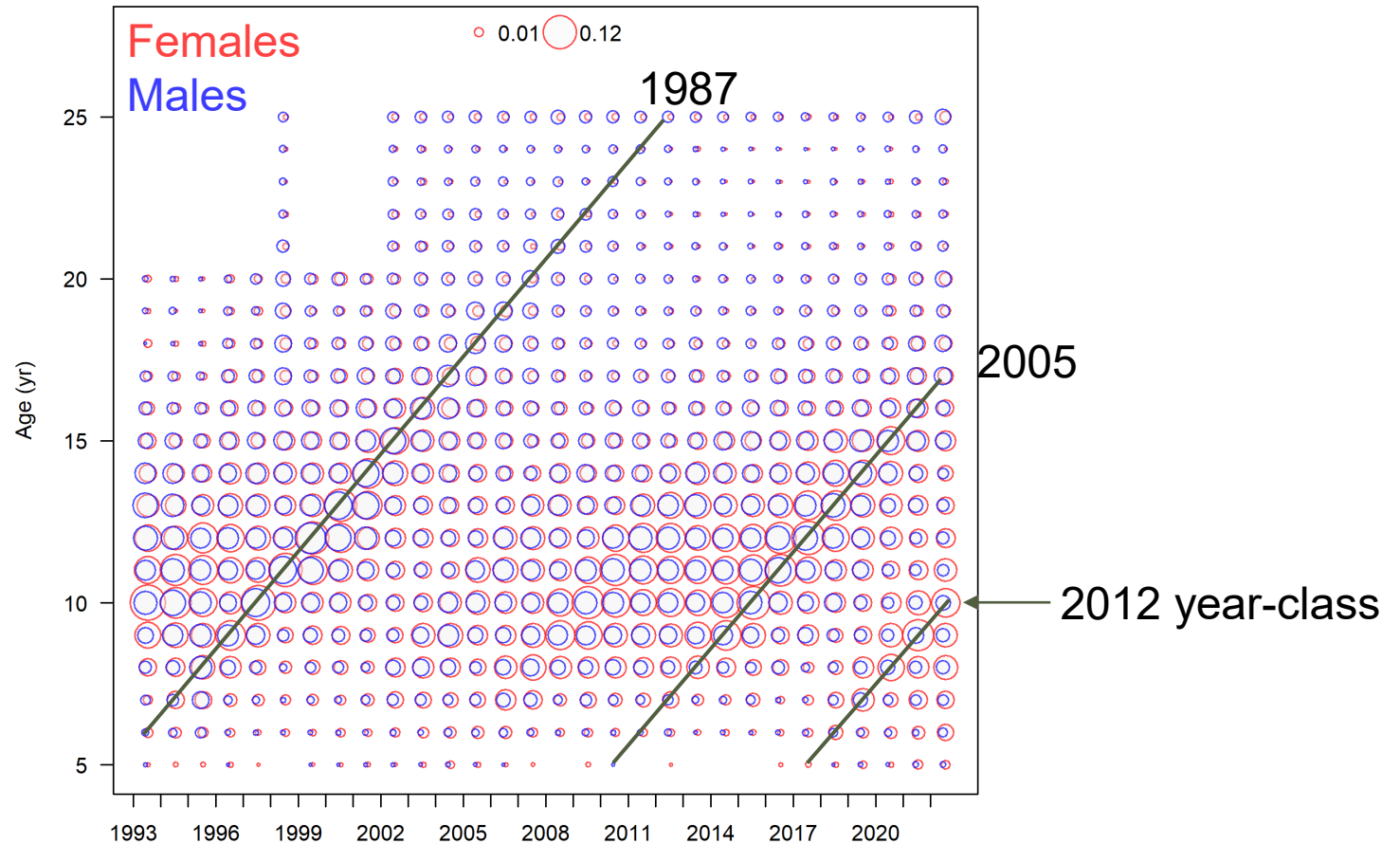
## Total pounds/skate



## O32 pounds/skate



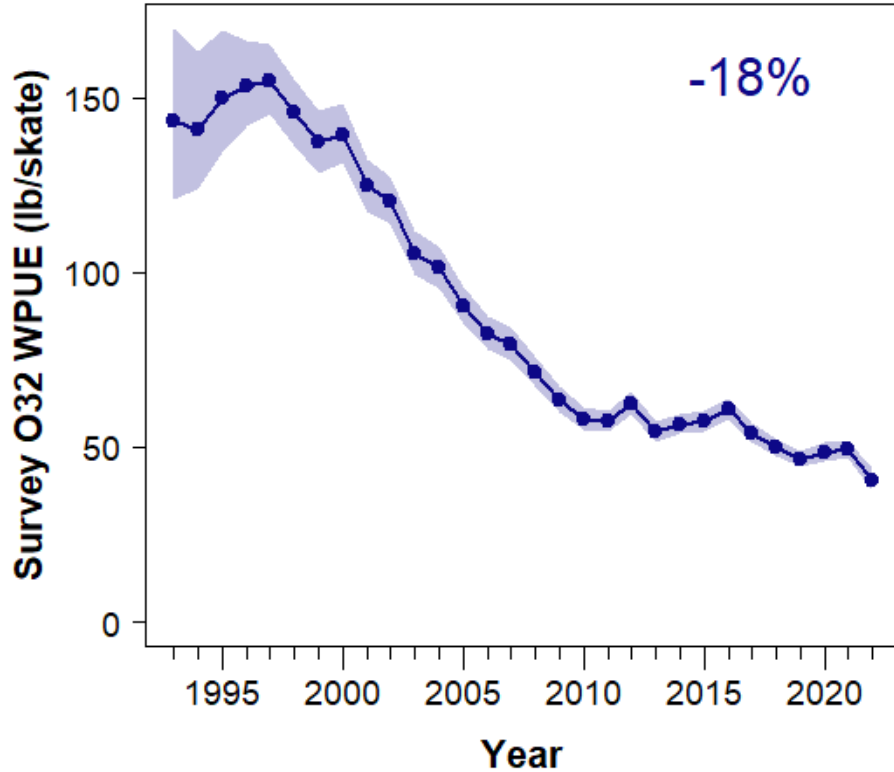
# Recent survey ages



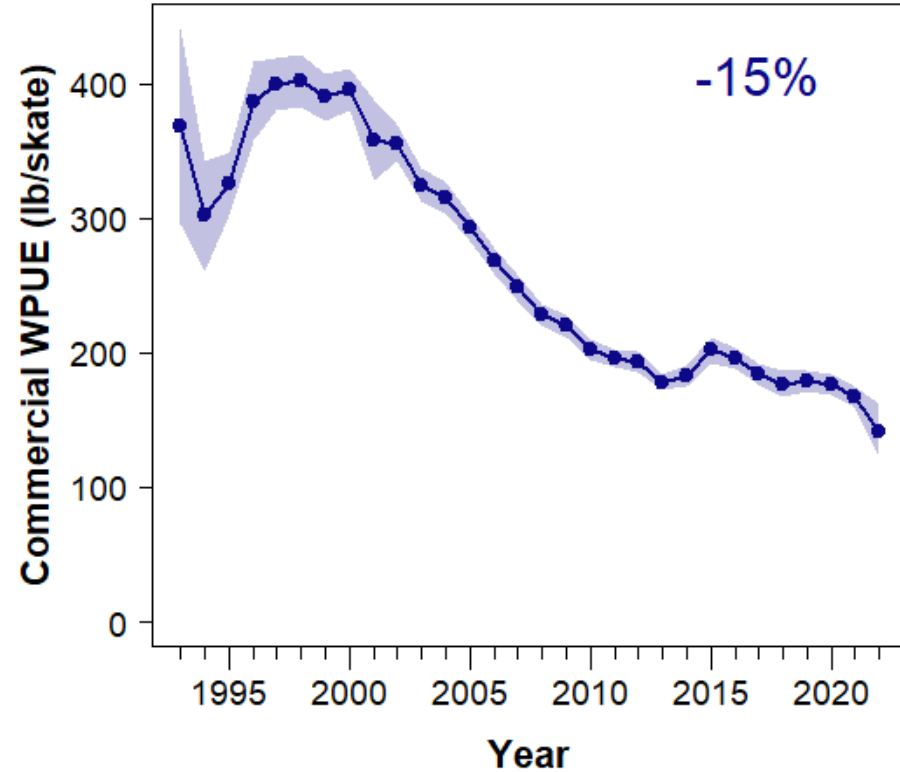


# Legal-size (O32) catch rates

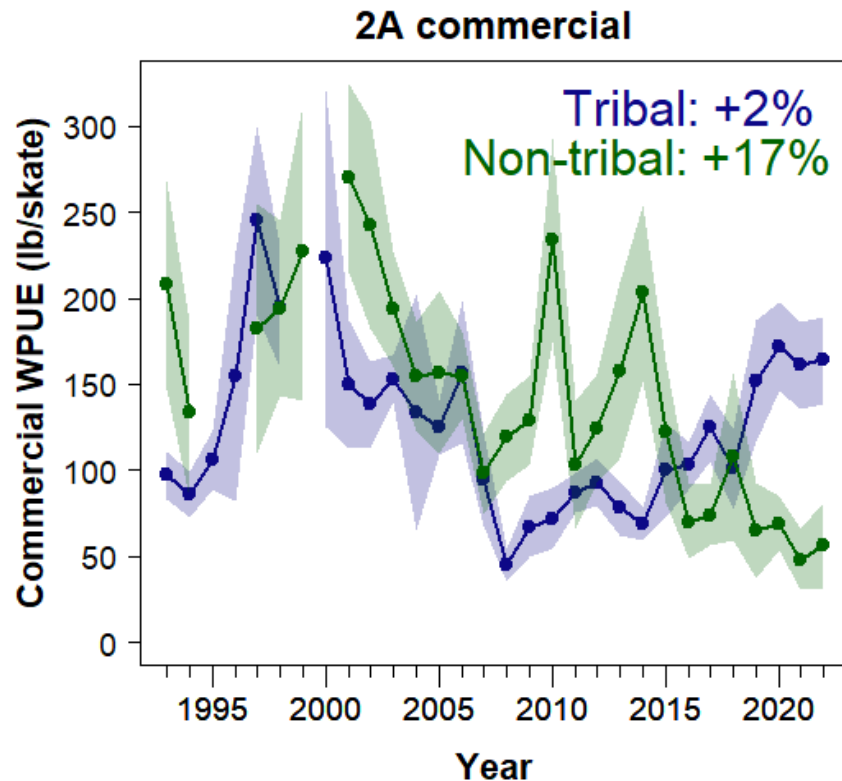
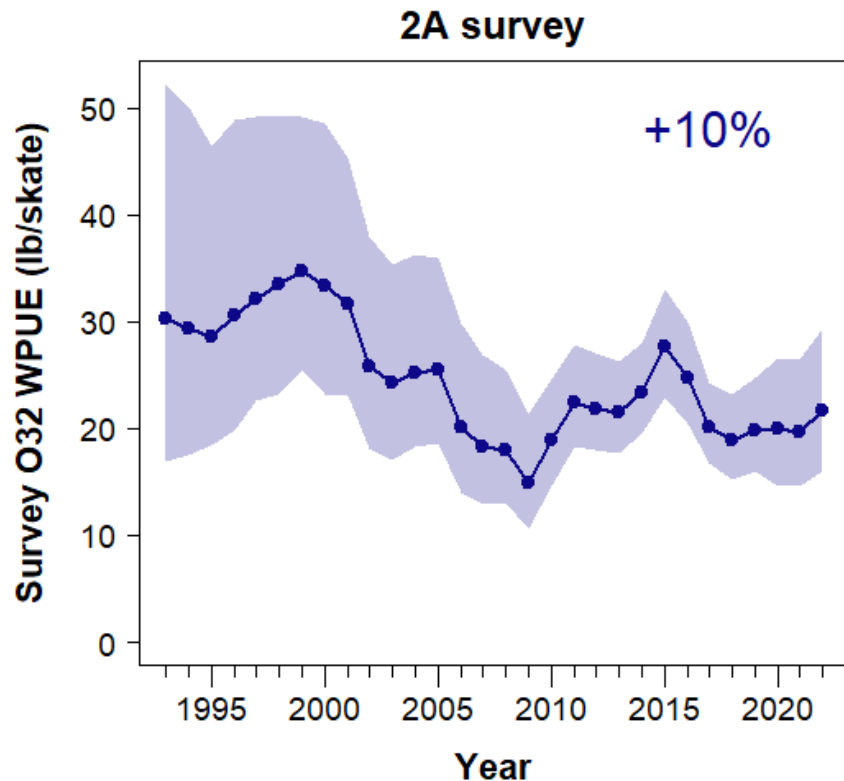
## Coastwide survey



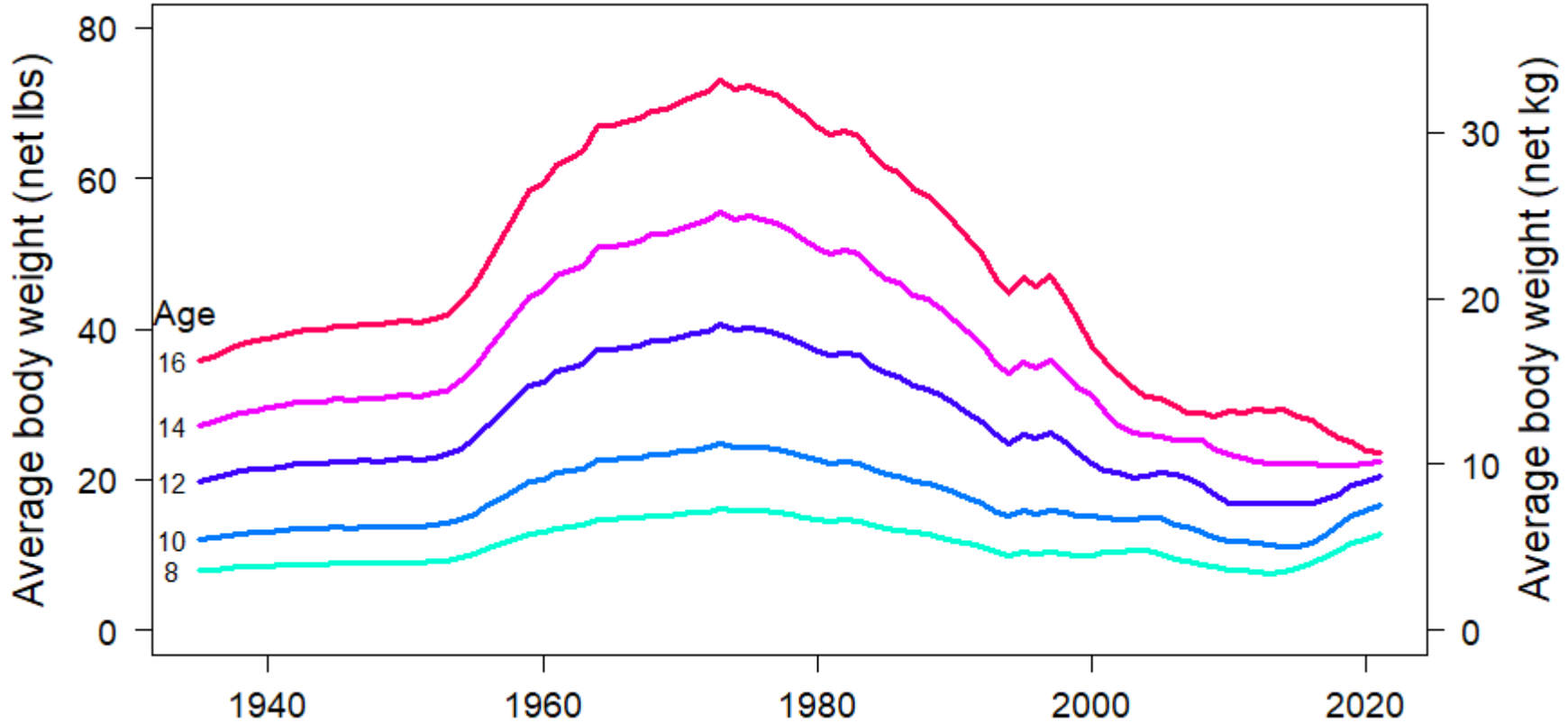
## Coastwide commercial



# Legal-size catch-rate trends 2A



# Historical coastwide female weight-at-age

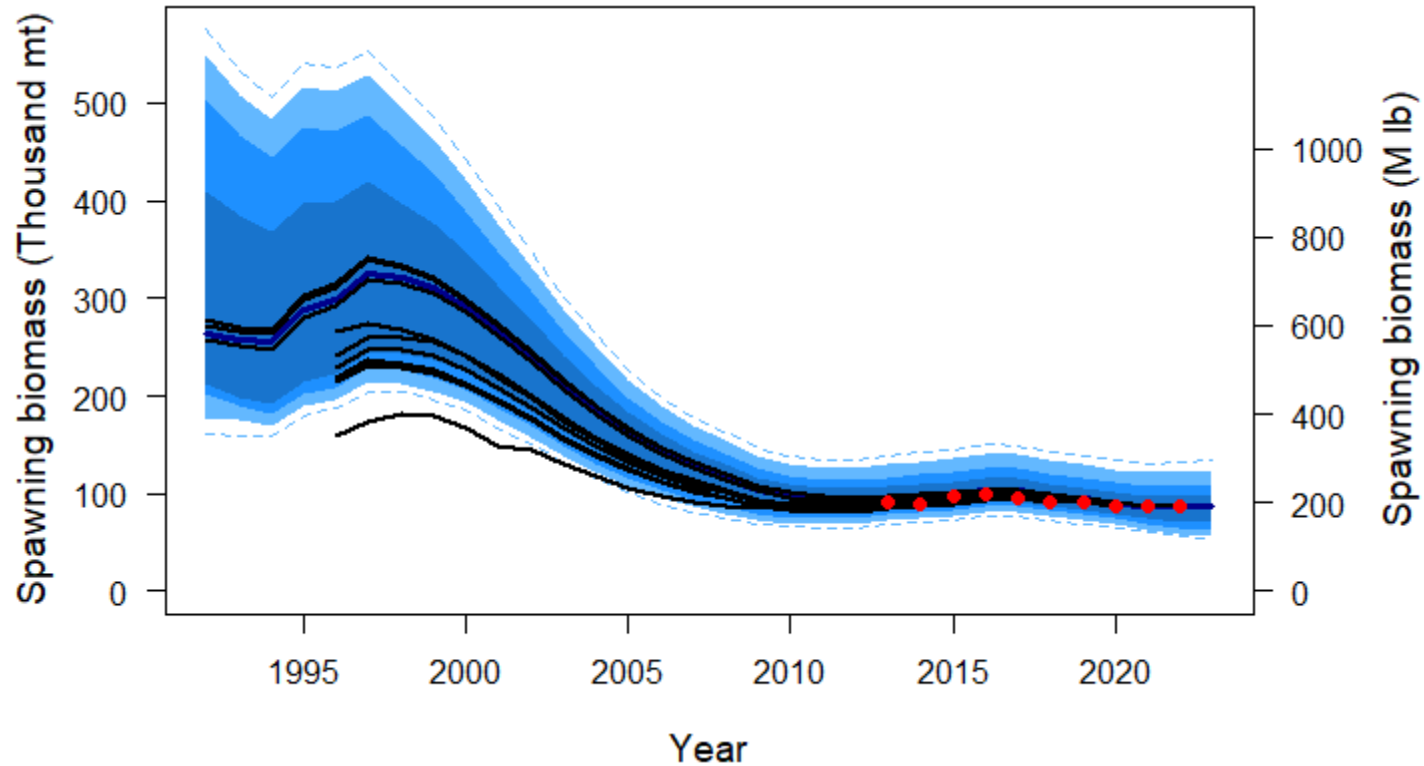


# Stock assessment modelling summary

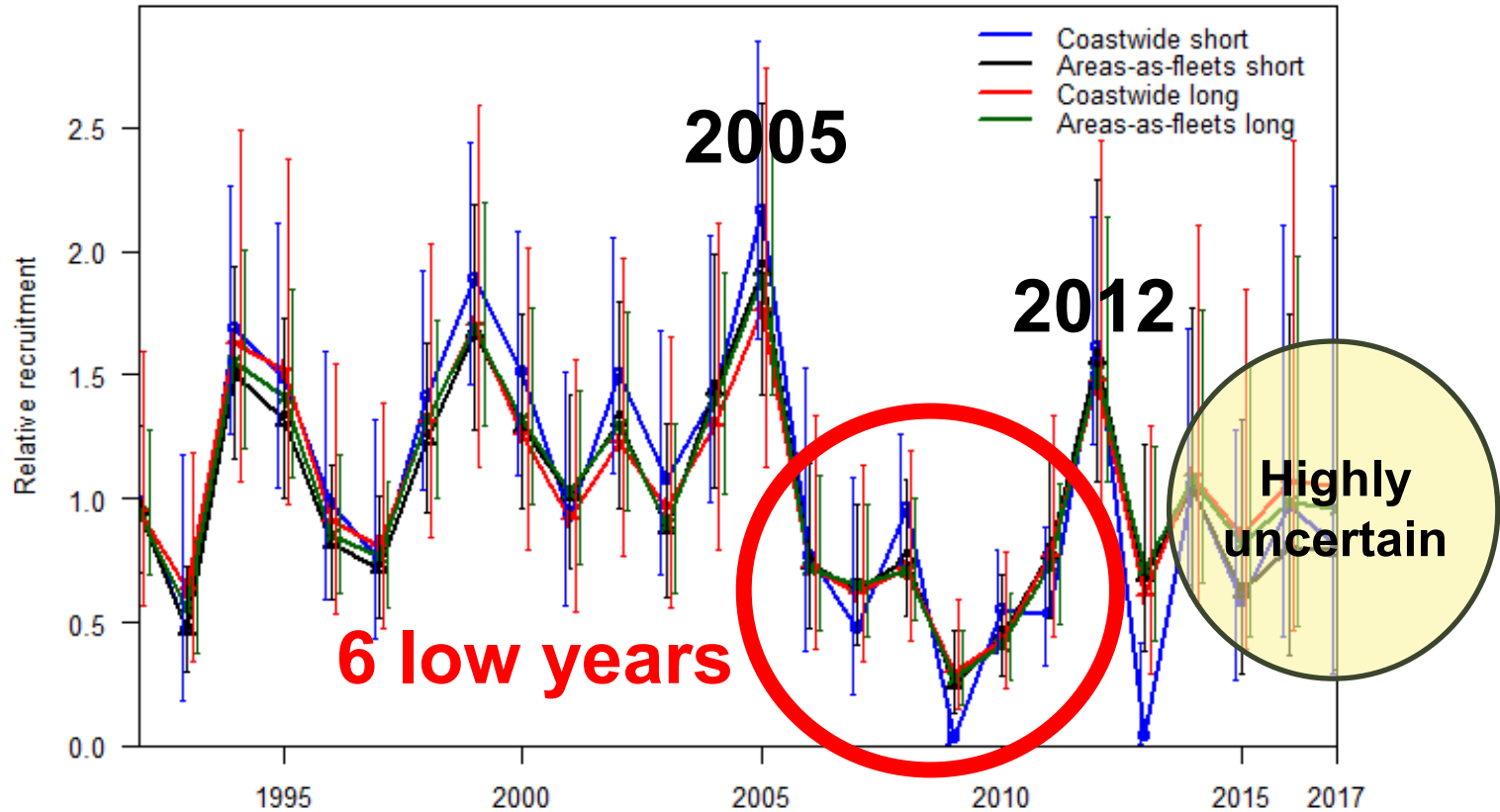
- Removed an outdated assumption of low natural mortality in 1 of 4 assessment models
  - Results in larger projected yields at long-term fishing intensity reference points (e.g.,  $F_{43\%}$ )
- Spawning biomass estimated to be stable, but relying heavily on maturation of the 2012 year-class
- Short term projections of surplus production remain near *status quo*



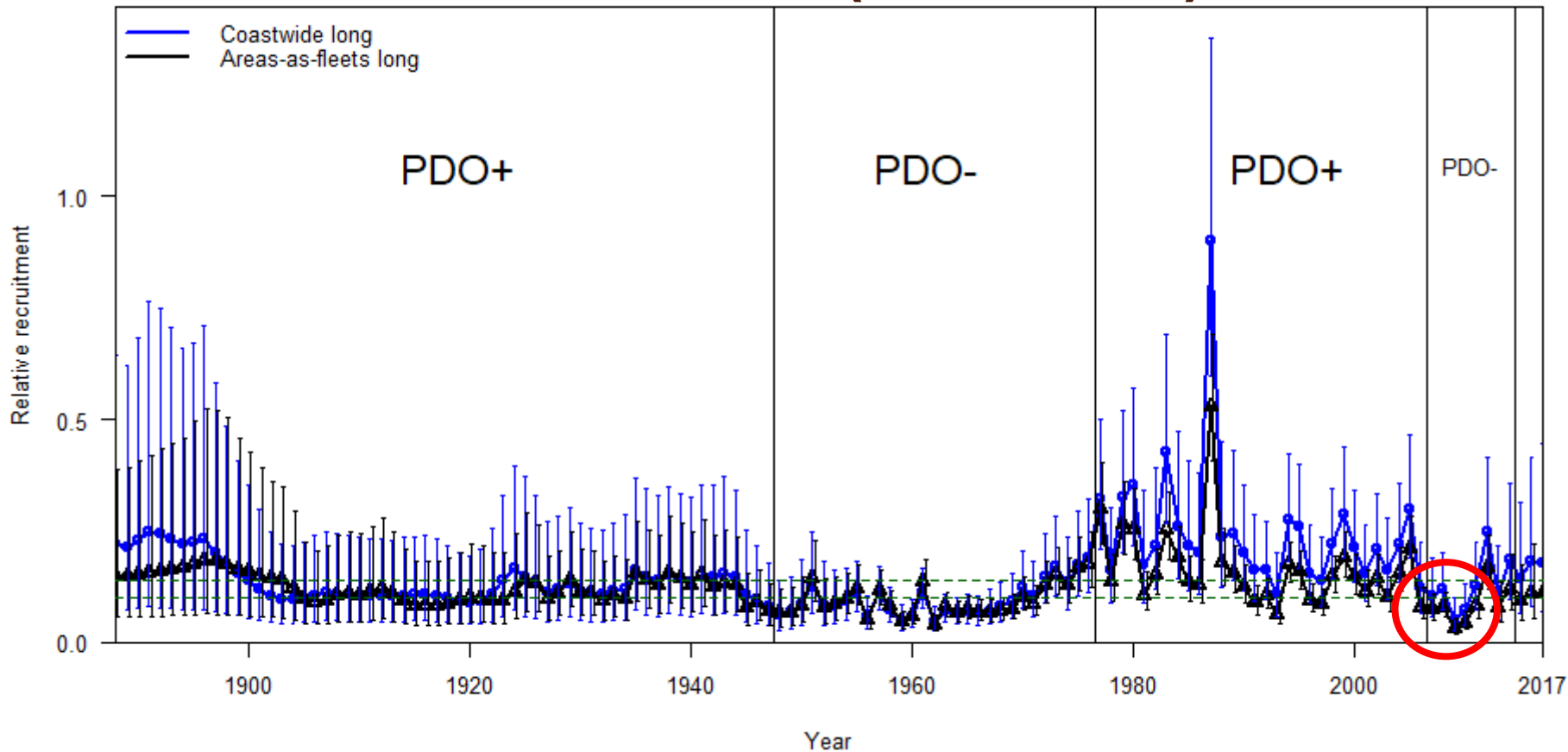
# Comparison with previous assessments



# Relative recruitment estimates



# Historical recruitment (2 models)



# Status and projections

- 2022 Fishing intensity:  $F_{51\%}$  (below reference level  $F_{43\%}$ )
- Status as of 2023:  $SB_{42\%}$
- Adopted 2023 mortality limit (37.0 Mlb):
  - Projected to result in a fishing intensity of  $F_{53\%}$
  - Below the estimated 3-year surplus (43.0 Mlb)
  - 38% chance of decrease in SB during 2023
    - 7% chance of dropping by 5% or more
  - 25% chance of dropping below  $SB_{30\%}$  by 2024
  - 25% probability of fishery limit decrease in 2023





# Additional risks

- The FISS and fishery have transitioned to the 2012 year-class, 29% mature in 2022; projections rely heavily on this single year class growing and maturing ‘on schedule’.
- Stock is at an unprecedented low population level (actual number/biomass of fish in the water) due to recent poor recruitment
  - Low productivity relative to long-term expectations
  - Less productive response to recent fishing
    - Downward trends, even though fishing intensity has been lower than reference level



# For more data and assessment information

- Summary for AM099: [IPHC-2023-AM099-11](#)
- Assessment and data overview documents are available through the [stock assessment page](#) of the IPHC's website:
  - [IPHC-2023-SA-01](#)
  - [IPHC-2023-SA-02](#)



# 99<sup>th</sup> Session of the IPHC Annual Meeting (AM099)

## Other decisions:

- Fishing periods
- Accommodation of the 2A management transition
- Charter management measures in IPHC Regulatory Areas 2C and 3A
- Recreational bag limit in IPHC Regulatory Area 2B
- Onboard consumption in Alaska
- New qualifying logbook in IPHC Regulatory Area 2A
  - In IPHC Regulatory Area 2A, Pacific Coast Groundfish non-trawl logbook provided by NOAA Fisheries is now an approved logbook for reporting Pacific halibut

[IPHC Fishery Regulations 2023 – 2 February 2023](#)



# Fishing Periods

- The Commission **ADOPTED** fishing periods for 2023:
  - All commercial fishing for Pacific halibut in all IPHC Regulatory Areas may begin no earlier than **10 March** and must cease on **7 December**.

With the transition of management authority of the IPHC Regulatory Area 2A non-tribal directed commercial Pacific halibut fishery from the IPHC to the PFMC and NOAA Fisheries (87 FR 74322), the IPHC no longer needs to consider setting dates for the 2A non-tribal directed commercial fishery. The dates set by NOAA Fisheries must be set within the overall commercial fishing period dates.



# Accommodation of the transition of management in the IPHC Regulatory Area 2A

- NMFS Final Rule [87 FR 74322](#) implementing the 2A management transition was published on 5 December 2022 and became effective on 4 January 2023.
- With [IPHC-2023-AM099-PropA3](#) adopted, IPHC is no longer responsible for issuing licenses to fish for Pacific halibut in commercial and recreational charter fisheries in IPHC Regulatory Area 2A, and for issuing annual management measures for the non-tribal directed commercial fishery in IPHC Regulatory Area 2A. Starting in 2023, NOAA Fisheries will assume these responsibilities.

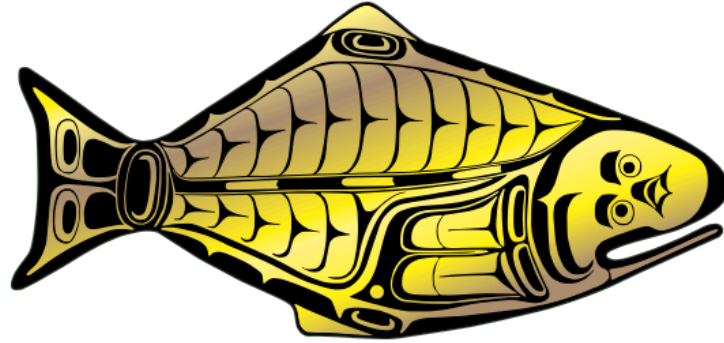


# Looking ahead

- The Commission accepted the offer by the United States of America to host the 100<sup>th</sup> Session of the IPHC Annual Meeting (AM100) in 2024 in Anchorage, AK from 22 to 26 January 2024.



**INTERNATIONAL PACIFIC**



**HALIBUT COMMISSION**

