

Agenda Item G.6
Supplemental Staff Presentation 1
September 2022

Non-Trawl Area Management - ROA/PPA

Agenda Item G.6
September 2022

Briefing Book Items



Situation Summary (includes link to public mapping portal)



Attachment 1 (Electronic Only): Draft Non-Trawl Sector Area Management Measures EA/RIR



WDFW Report 1



Supplemental CDFW Report 1

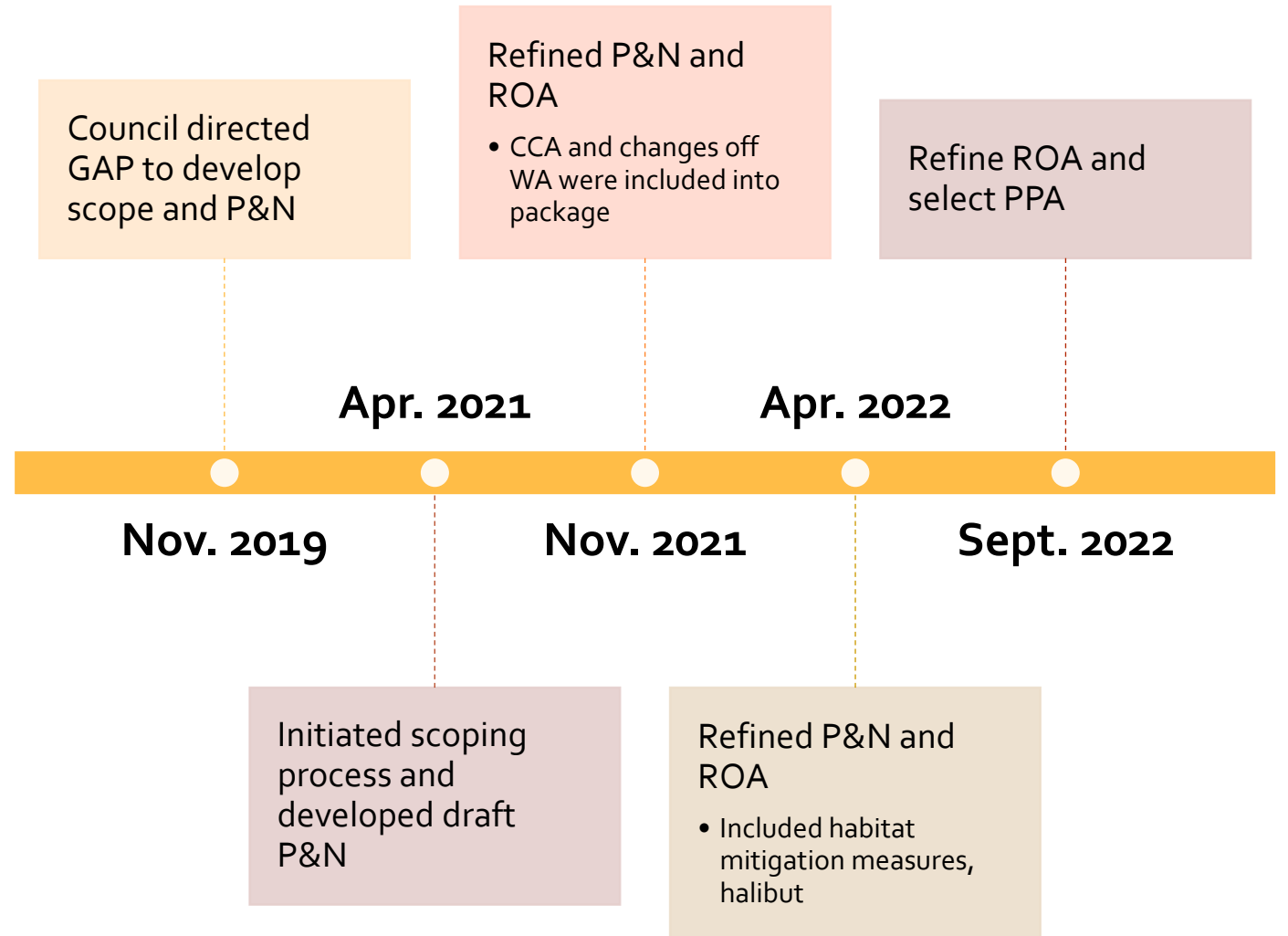


Supplemental ODFW Report 1



GAP/GMT/EC/HC Reports

History of Action



Council Action

Review and potentially revise the P & N, range of alternatives

Adopt preliminary preferred alternatives, as appropriate

Purpose and Need

“The purpose of the proposed actions is to provide access to additional areas that are currently closed to groundfish fishing inside the Non-Trawl Rockfish Conservation Area (RCA) and Cowcod Conservation Area (CCA). In addition, the proposed actions minimize adverse effects on designated Essential Fish Habitat (EFH) and sensitive benthic habitats exposed to fishing activity, mitigate bycatch of groundfish and protected and prohibited species, and continue to protect fishery resources and their habitats.”

Purpose and Need (Cont)

The actions are needed to provide increased access to non-overfished shelf rockfish stocks and other important target stocks....

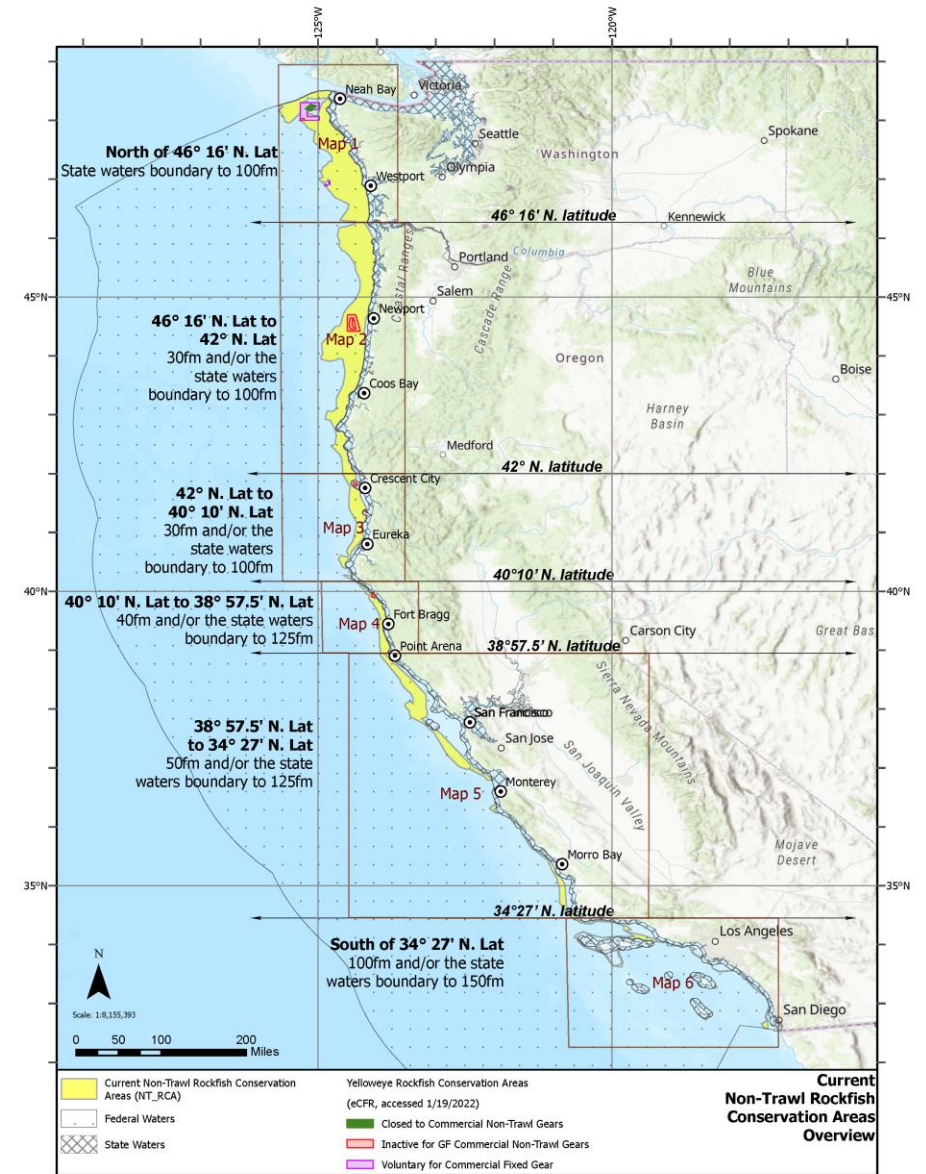
....thereby increasing the overall potential economic value of the groundfish and non-tribal directed commercial Pacific halibut fishery.

The discretionary authorities under Section 303(b)(2)(A)&(B) of the Magnuson/Stevens Act may be used to protect species and habitats, including deep-sea corals and overfished species."

Non-Trawl RCA

- Established in 2003 to protect overfished rockfish
- Applies to commercial vessels
 - Directed groundfish (OA, LEFG, IFQ GS)
 - Incidental OA (Directed halibut, salmon troll)
- All but yelloweye rockfish are rebuilt
- Prohibits non-trawl vessels from targeting healthy shelf stocks
- Boundaries amended several times through GF Specifications

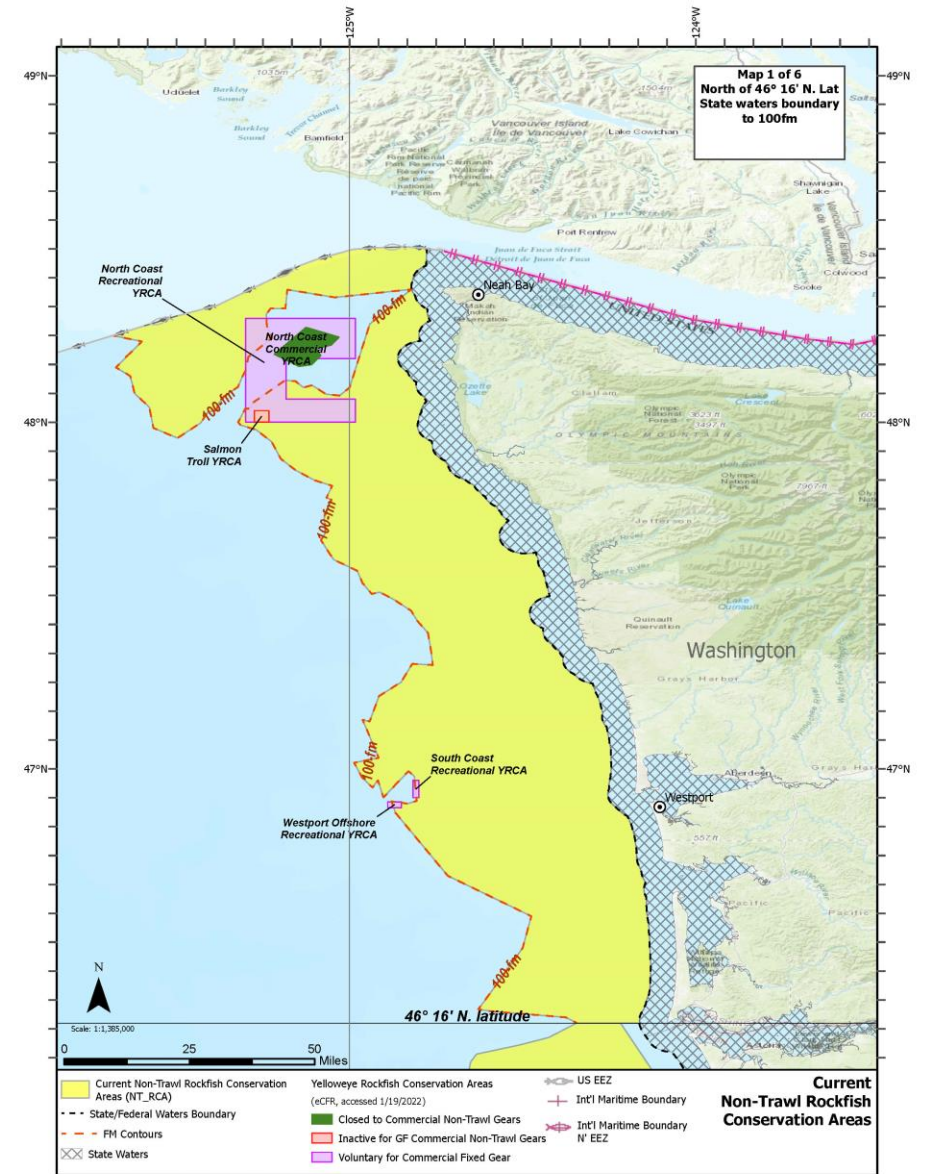
See pg. 10, Attachment 1



Yelloweye Rockfish Conservation Areas (YRCAs)

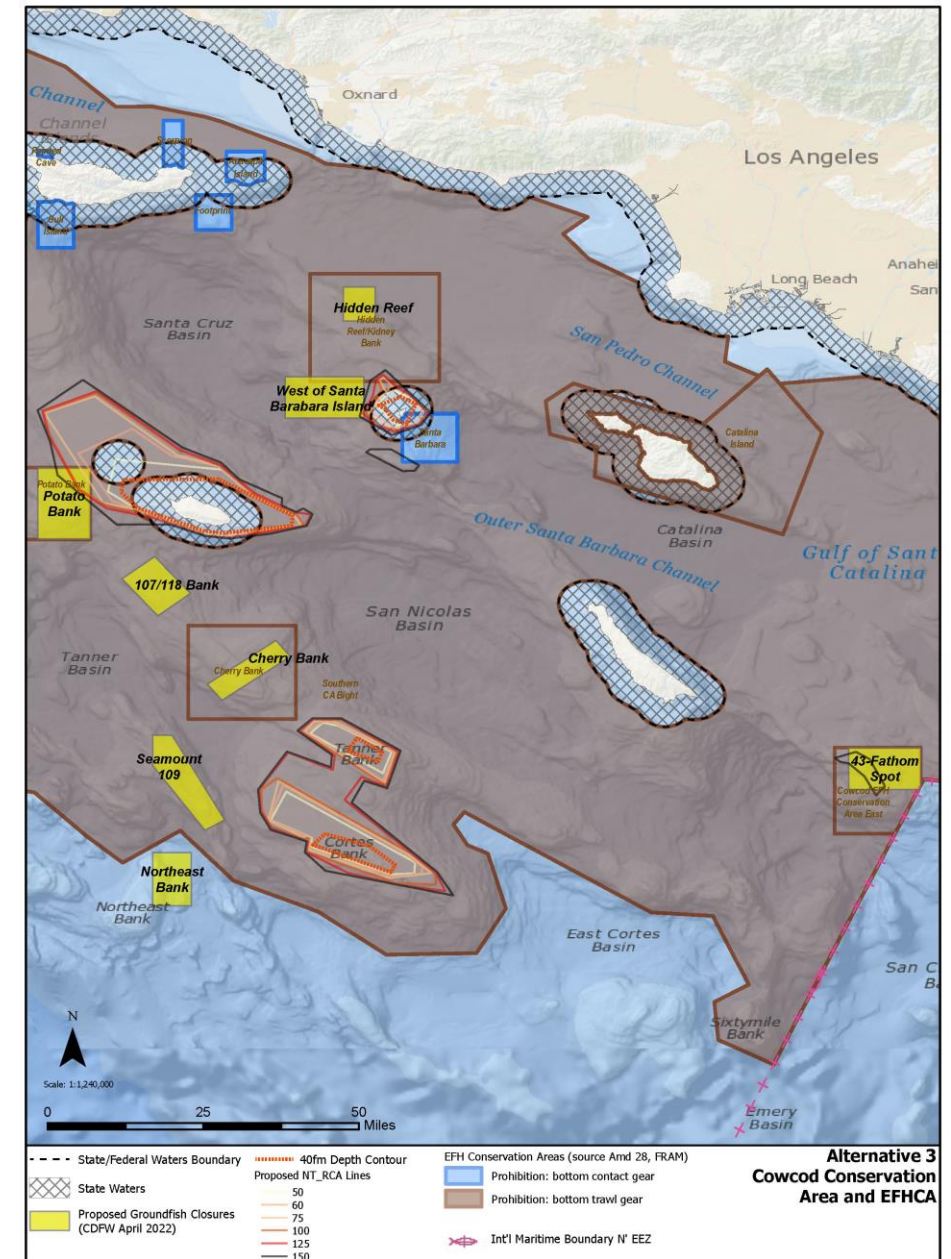
- First developed in 2003
- Only 1 currently active for non-trawl: North Coast Commercial YRCA
- Some voluntary avoidance for FG off WA
- Most not active for non-trawl gears

See pg. 14-17, Attachment 1



Habitat and Essential Fish Habitat Conservation Areas (EFHCAs)

- EFHCAs designed to protect or mitigate habitat impact
- Two types of EFHCAs:
 - Bottom trawl
 - Bottom contact
- Prohibits all gears and fisheries - federal and non-federal
- Considerations for EFH changes should typically be made in EFH review process (GF in 2025)



Range of Alternatives from April 2022

- No Action
- Alternative 1: Allow non-bottom contact gear in NT_RCA with natural bait (OA, LEFG, IFQ GS) south of 46 16 N. lat.
- Alternative 2: Move seaward boundary of NT_RCA to 75 fm from 46 16 to 34 27 N. lat.
- Alternative 3: Remove CCA
- ~~• Alternative 4: Change seaward boundary of NT_RCA off WA for pot gear~~
- Alternative 5: Develop BACs

Alternative 1: Allow non-bottom contact gear in NT_RCA with natural bait south of 46 16 N. lat.

- Non-trawl vessels (OA, LEFG, IFQ GS) could fish in the NT_RCA with approved non-bottom contact gear
 - Allow for natural bait
 - Suboption: LEFG vessels can fish up to trip limits
- Impacts
 - Allows LEFG and IFQ GS to utilize higher limits and QPs
 - Potential increases in catch of GF
 - Limited impact to habitat
 - Risk to seabird with natural bait
 - Troll and vertical HKL gear testing in 23-24 EFPs

Alternative 2: Move seaward boundary of NT_RCA to 75 fm from 46° 16' to 34 ° 27' N. lat.

- Applies to commercial groundfish non-trawl and directed halibut
- Suboptions
 - 1a-1c: Create new groundfish bottom contact prohibition on existing bottom trawl EFHCAs
 - 2: Create new groundfish bottom contact prohibition for area west of Heceta Bank
 - 3: Create new YRCAs

Alternative 2: Impacts

- Opens 2,351 sq. mi. to non-trawl groundfish and directed halibut fishing
- Positive socio-economic benefit to industry/communities through increased access to target stocks
- Uncertain, but likely low risk of impacts to yelloweye (esp. with mitigation measures)
- Likely non-significant impacts to ESA-listed species (humpbacks, seabirds, turtles)

Overview of Habitat Impacts and Suboptions

- 201 sq. mi. bottom trawl EFHCA area exposed
 - ~2.2% of total EFHCA area
- Suboptions would not change the current EFHCA regulations in that area
 - Create a “new” type of EFHCA
- Only applicable to groundfish, not halibut
- Council should consider enforceability, exposed habitat, and the benefit of holistic look at next EFH review (2025)

Suboptions 1a-1c: Designating new groundfish bottom contact EFHCAs

1A

Applies to only exposed portion of NT_RCA

Issues with enforcement (size)

1B

Applies to entire BT EFHCA with "small" portions outside NT_RCA currently

Potential to impact current operations

1C

Staff developed- applies to entire EFHCA

Similar to 1A/1B in current impacts; but benefits in long term

Any new designation would be additive to the current EFHCA restrictions.

Staff Assessment of Suboptions 1a-1c Applicability

See Table 15, pg. 76 of
Attachment 1

Table 15. Assessment of Applicability of Alternative 2 Suboptions for EFHCAs exposed under Alternative 2

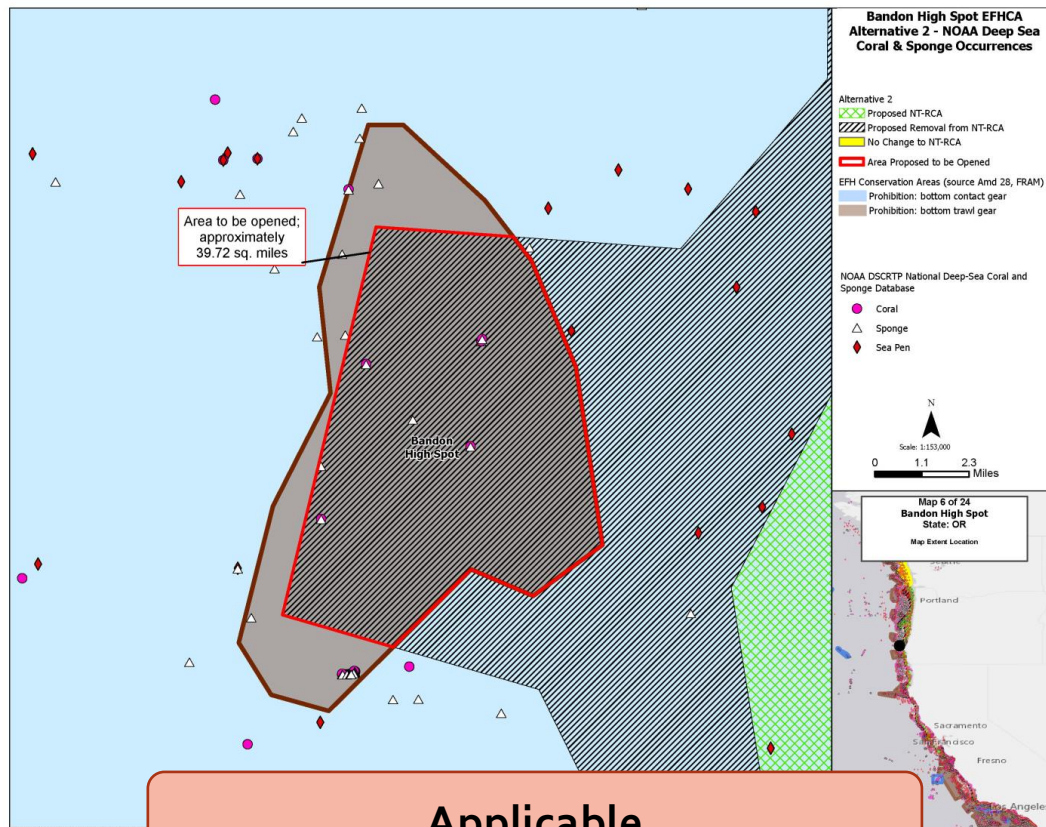
EFHCA name	Map Reference	Approximate Amount of EFHCA to be exposed under Alternative 2 (sq. mi)	Suboption 1a: Prohibit all groundfish bottom contact gear in EFHCA that would otherwise be reopened under this action. (* denotes areas that may have enforcement complexity)	Suboption 1b: Prohibit all groundfish bottom contact gear in the entire EFHCA for bottom trawl EFHCAs with small portions outside the existing NT_RCA seaward boundary	Suboption 1c: Create a groundfish bottom contact EFHCA over the entire bottom trawl EFHCA- both in the area to be exposed and in the current NT_RCA
Nehalem Bank/Shale Pile	Figure 25	60.44	Applicable	Applicable	Applicable (Same as 1b)
Garibaldi Reef North	Figure 26	8.48	Applicable	Not Applicable	Applicable
Garibaldi Reef South	Figure 27	2.32	Applicable	Not Applicable	Applicable
Heceta Bank	Figure 28	Negligible	Not Applicable	Not Applicable	Not Applicable
Juno Reef	Figure 29	2.54	Not Applicable*	Not Applicable	Applicable
Bandon High Spot	Figure 30	39.72	Applicable	Applicable	Applicable (Same as 1b)
Rogue River Reef	Figure 31	5.69	Not Applicable*	Not Applicable	Applicable
Eel River Canyon	Figure 33	1.83	Not Applicable *	Not Applicable	Not Applicable
Blunts Reef	Figure 34	0.5	Not Applicable	Not Applicable	Applicable
Mendocino Ridge	Figure 35	11.56	Not Applicable *	Not Applicable	Not Applicable
Delgada Canyon	Figure 37	Negligible	Not Applicable	Not Applicable	Not Applicable
Point Arena North	Figure 38	0.76	Not Applicable	Not Applicable	Applicable
Point Arena South Biogenic Area	Figure 40	11.77	Not Applicable *	Not Applicable	Not Applicable
The Football	Figure 41	8.91	Applicable	Applicable	Applicable (Same as 1b)
Gobblers Knob	Figure 42	1.64	Applicable	Not Applicable	Not Applicable
Cordell Bank/Biogenic Area	Figure 43	12.52 a/	Not Applicable	Not Applicable	Not Applicable
Cordell Bank (50-fathom isobath)	Figure 44	0.41	Bottom Contact EFHCA (Suboptions Not Applicable)		
Farallon Islands Fanny Shoal/Cochrane Bank	Figure 45	1.2	Not Applicable*	Not Applicable	Applicable
Farallon Escarpment	Figure 46	1.47	Not Applicable*	Not Applicable	Not Applicable

76

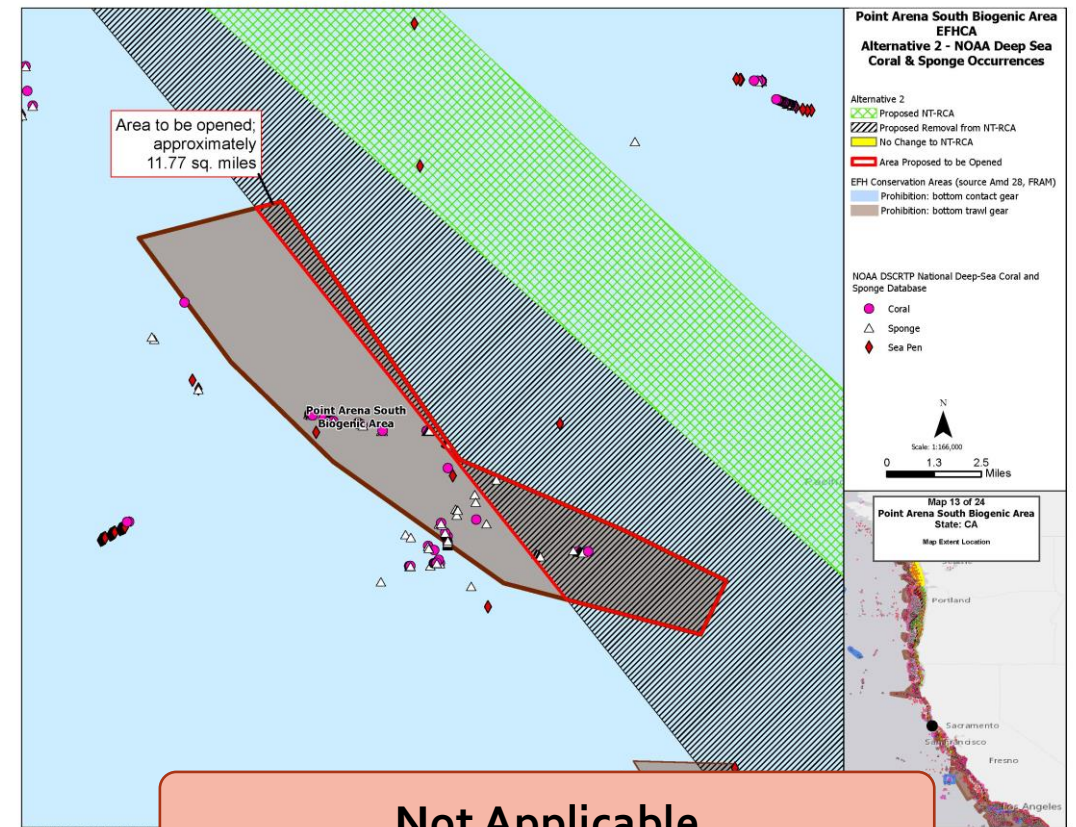
Ascension Canyonhead	Figure 47	1.22	Not Applicable*	Not Applicable	Not Applicable
Monterey Bay/Canyon	Figure 48	3.08	Not Applicable*	Not Applicable	Not Applicable
Big Sur Coast/Port San Luis	Figure 49	1.95	Not Applicable*	Not Applicable	Not Applicable
La Cruz Canyon	Figure 50	5.89	Applicable	Applicable	Applicable (Same as 1b)
Point Conception	Figure 51	17.92	Not Applicable*	Not Applicable	Not Applicable

a/ Cordell Bank/Biogenic Area bottom trawl EFHCA overlaps with the Cordell Bank (50-fathom isobath) bottom contact EFHCA and therefore, only 12.11sq. mi. of area would be opened to groundfish non-trawl bottom contact gears.

Suboption 1A: Create groundfish bottom contact EFHCA in bottom trawl EFHCA area exposed under Alt 2



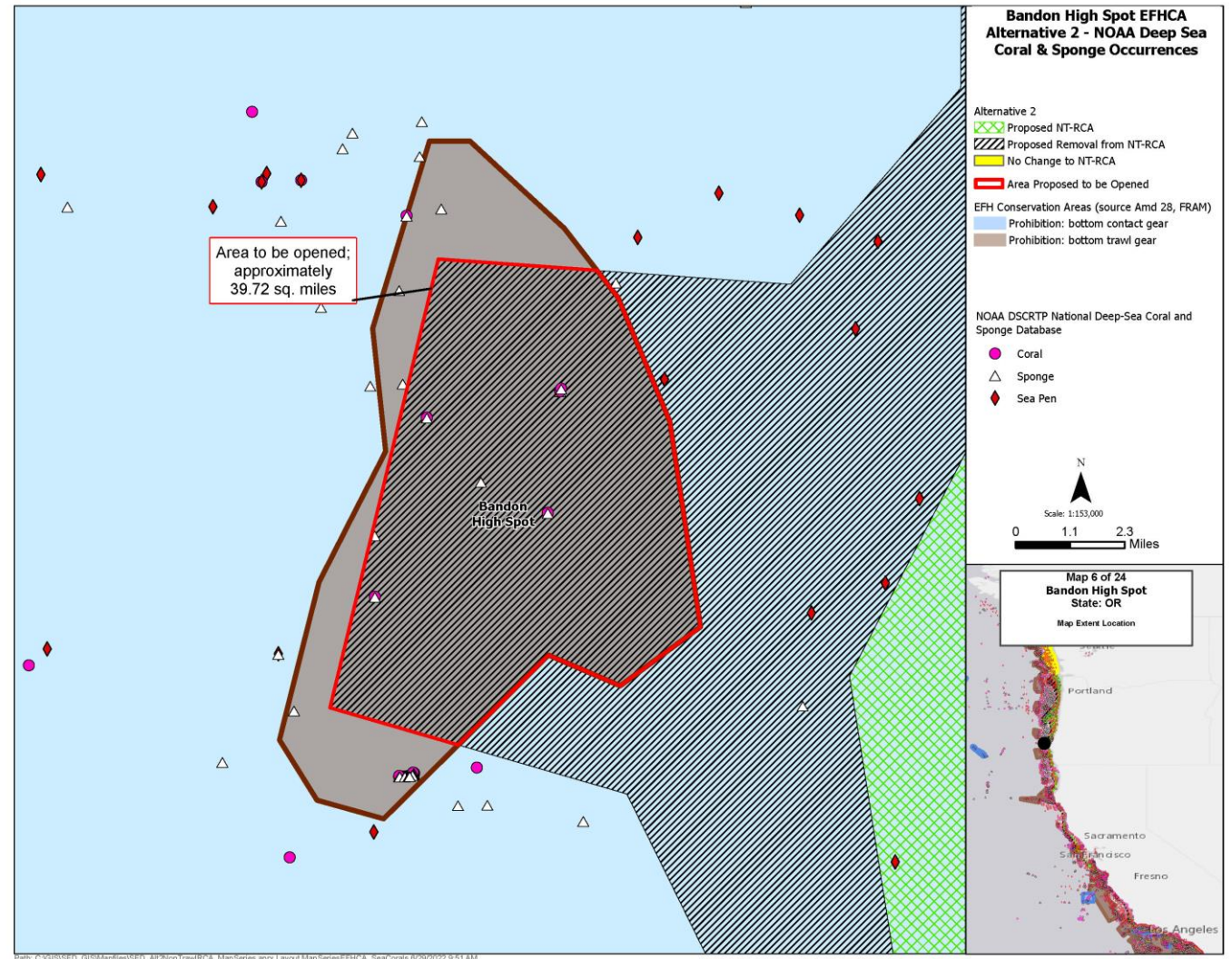
Applicable



Not Applicable

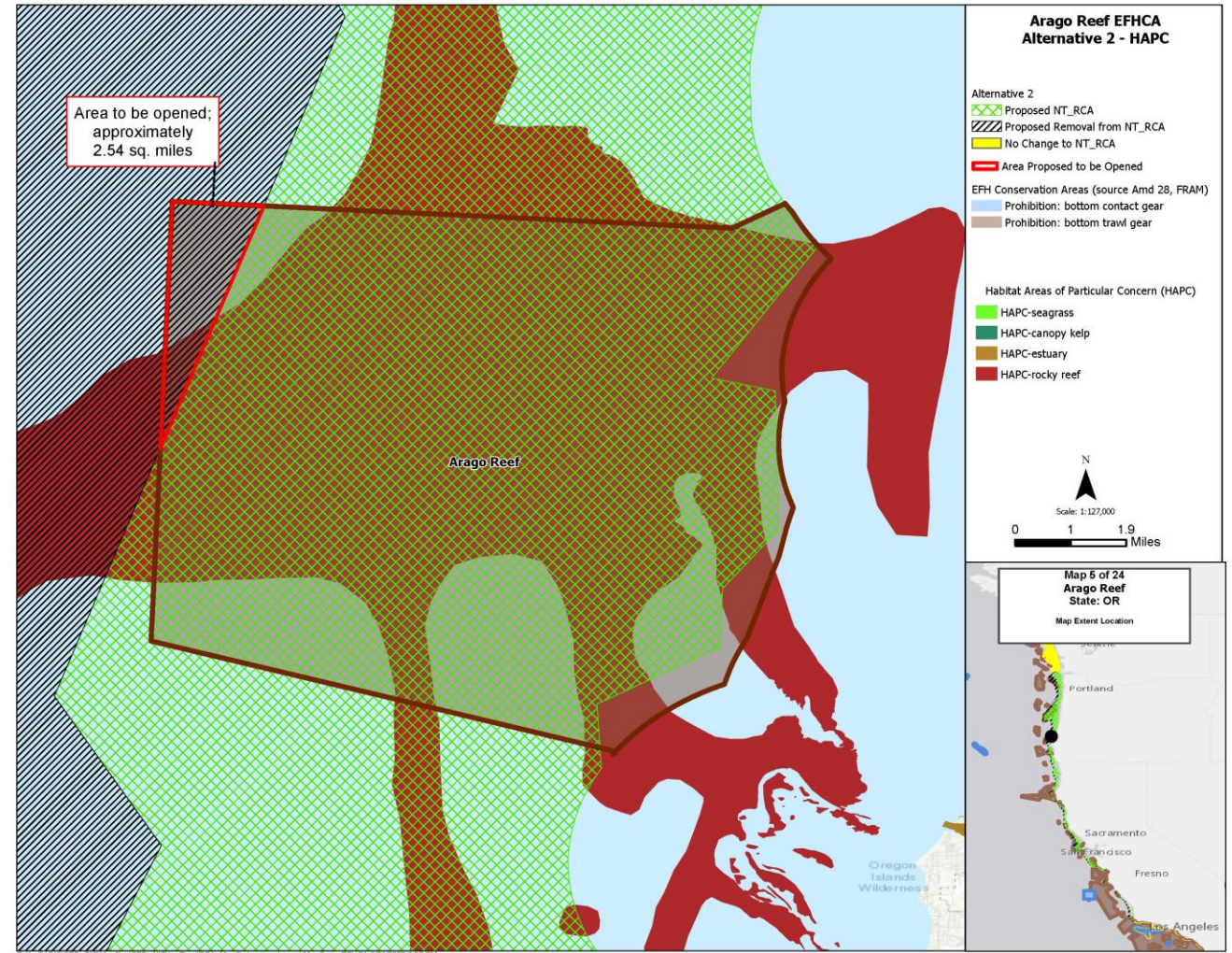
Suboption 1B: Create groundfish bottom contact EFHCA in entire BT EFHCA with "small" areas outside current NT RCA

- Only 4 EFHCAs identified for this suboption
 - Nehalem Bank/Shale Pile (Figure 25)
 - Bandon High Spot (Figure 30)
 - The Football (Figure 27)
 - La Cruz Canyon (Figure 38).
- 24.35 sq. mi. of current fishing area would be closed to groundfish bottom contact gear



Suboption 1c: Create a GF BC EFHCA over the entire BT EFHCA- both in the area to be exposed and in the current NT RCA

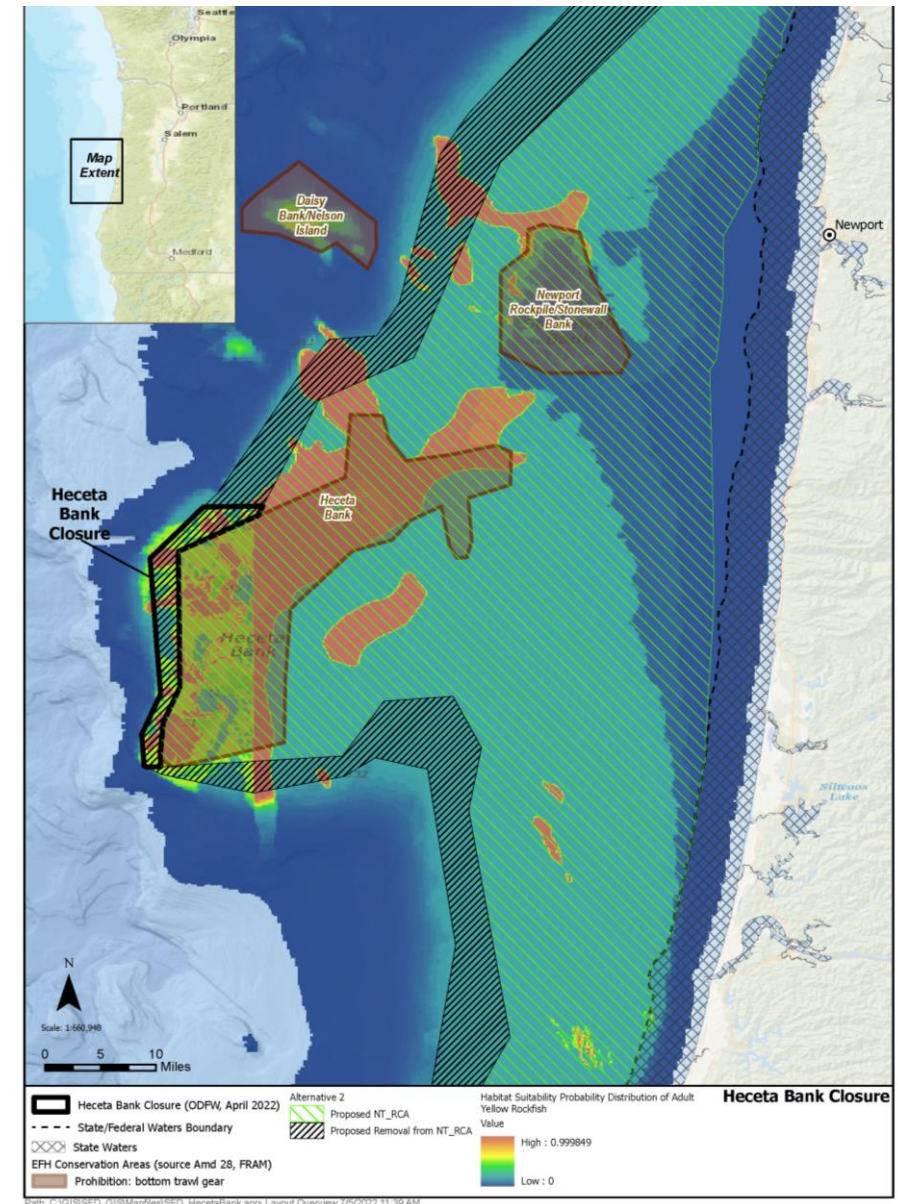
- Staff developed alternative after reviewing suboptions
- Purpose
 - Less enforcement and administrative burden (same boundaries currently in reg)
 - If the NT_RCA moved in future, protections already in place.
 - Consider efficiencies in relation to future EFH review process



Suboption 2: Prohibit groundfish bottom contact gear in the area west of the Heceta Bank EFHCA.

- Staff recommendation: Develop a YRCA in the area identified
- Council would need to specify if applicable to directed halibut; but not available for inseason change- require full rulemaking
- Could consider YRCA for entire BT EFHCA in case of future NT_RCA boundary movements

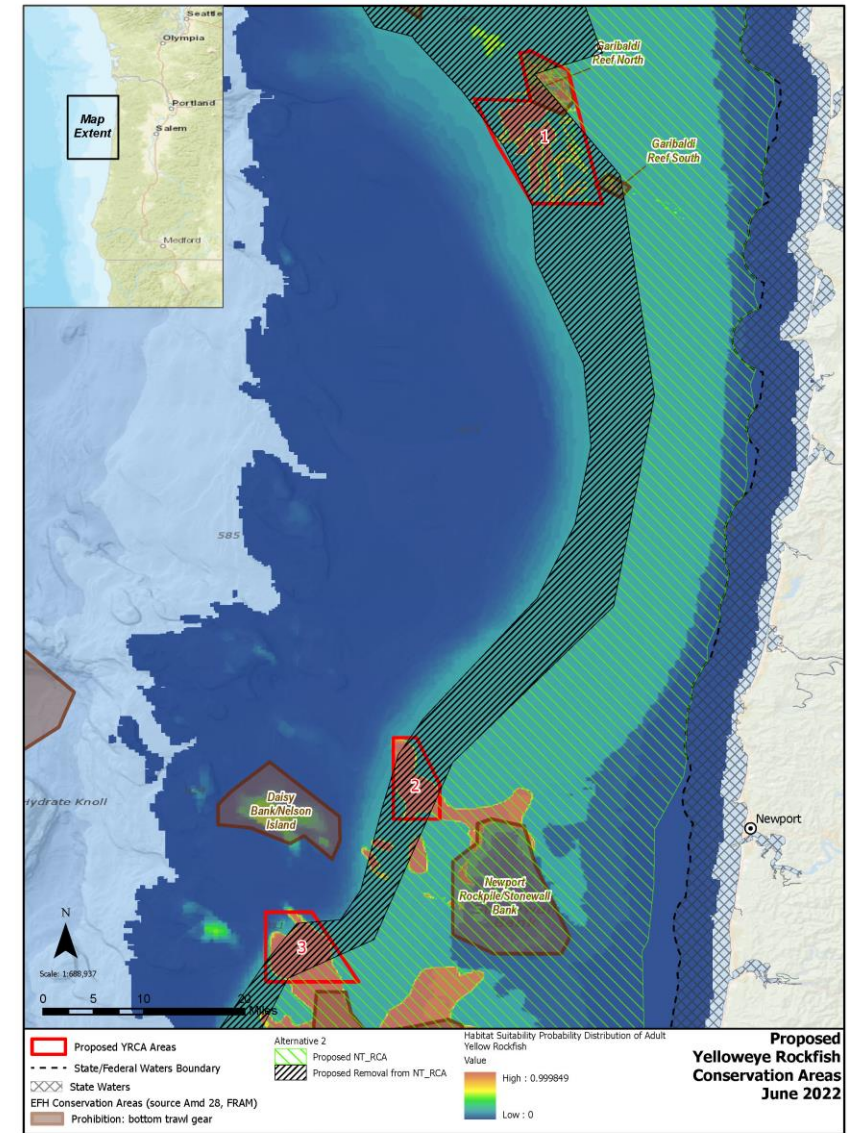
See Figure 14, Page 41, Attachment 1



Suboption 3: Develop new YRCAs

- Staff identified 3 potential new YRCAs based on yelloweye suitability maps
 - One near Garibaldi Reef
 - Two near Daisy Bank and Stonewall Bank
- Assumed closed to non-trawl gear
 - Council should clarify sectors to which this should apply
 - If mandatory for halibut, would need separate rulemaking to change.

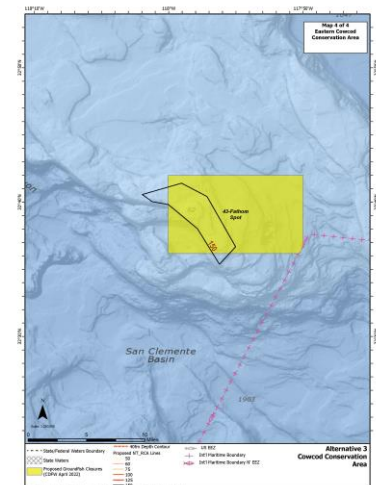
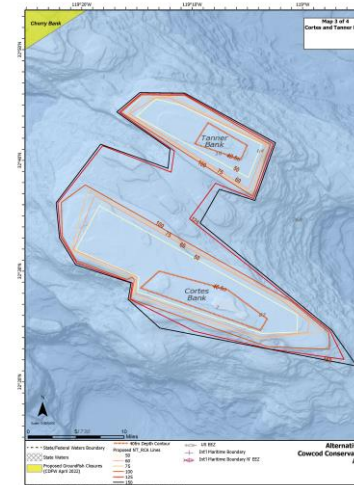
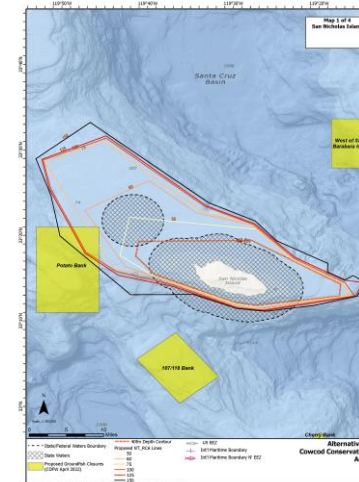
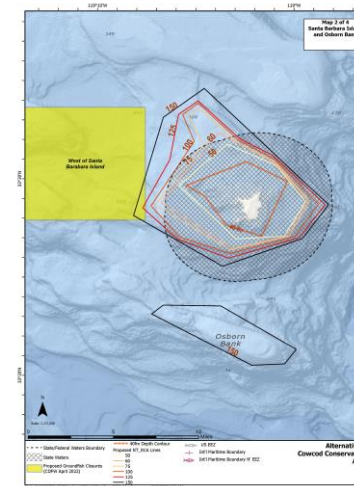
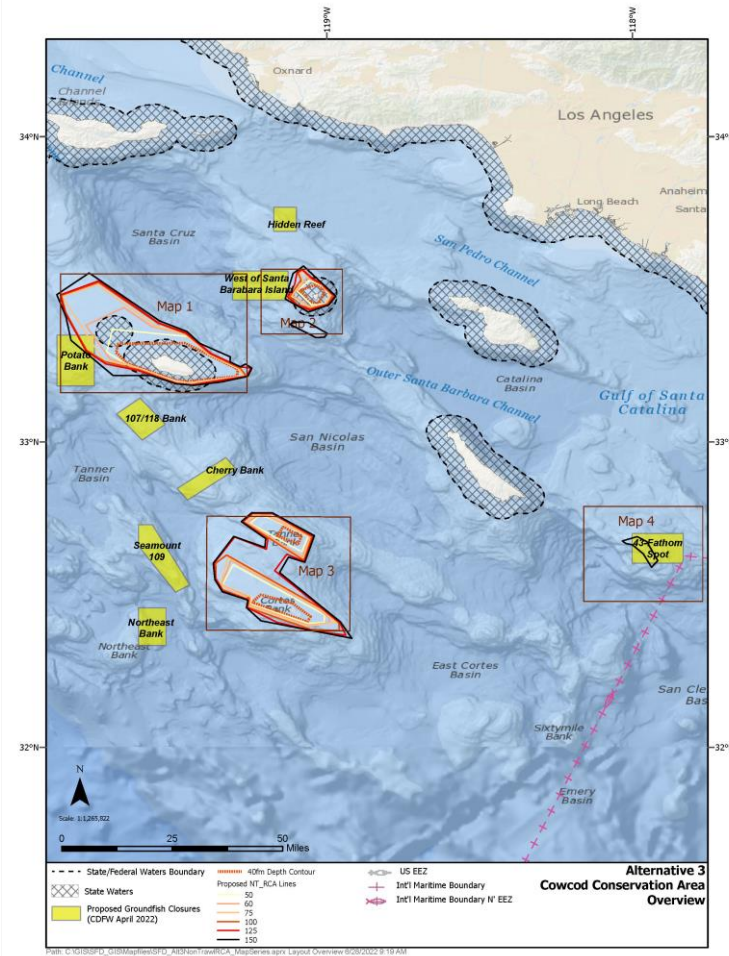
See Figure 15, Page 43, Attachment 1



Alternative 3: Remove the CCA

- Apply to both Commercial and Recreational
- New potential NT_RCA lines at 50, 60, 75, 100, 125, 150 fm
- 8 new "proposed groundfish closures" identified by CDFW stakeholder group to protect habitat

See page 113 of Attachment 1

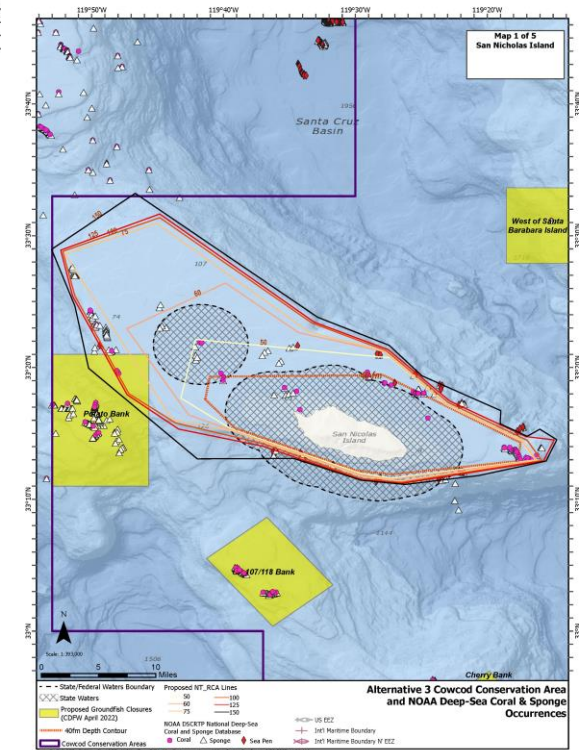
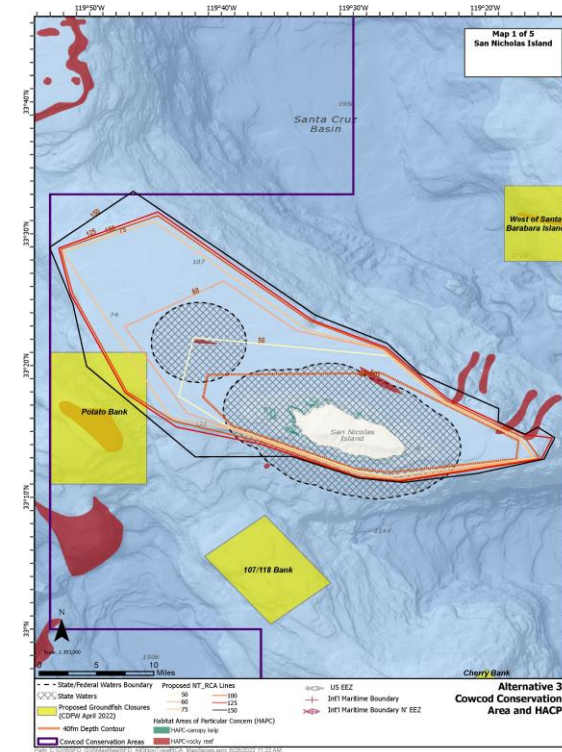


Alternative 3 Impacts

- Opens over 4,600 sq. mi. to groundfish fishing
 - Nearly all closed to bottom trawl
- Positive socio-economic benefit
- Low risk (with mitigation measures) to cowcod, bronzespotted
 - Yelloweye presence in eastern CCA
- Low risk to whales, seabirds, and turtles

Alternative 3: Habitat Impacts

- Proposed GF closures apply to all recreational and commercial vessels
- Most overlap with BT EFHCA
 - NE Bank overlaps with DECA (BC closure)
- Other BC state fisheries exist in proposed closures



Alternative 5: Block Area Closures

Develop BACs for commercial GF non-trawl sectors (directed OA, LEFG, IFQ GS) coastwide

- Background
 - Currently available only for trawl gears
 - Preseason/Inseason
 - Sector/gear/duration specific
- Lack of inseason data
 - Fish tickets - only retained species
 - Low observer coverage
 - Logbooks- starting in 2023

Mapping Public Portal

Access the Non-Trawl Area Management Measures mapping portal at:

<https://arcg.is/4GP19>



Council Action



Review and potentially revise the P&N, range of alternatives.



Adopt preliminary preferred alternative(s), as appropriate.

Questions?