



BOEM Bureau of
Ocean Energy Management

BOEM Oregon Offshore Wind Energy Planning

May 24, 2022

Necy Sumait, Office of Strategic Resources Regional Supervisor
Whitney Hauer, Ph.D., Renewable Energy Specialist

BOEM Pacific Regional Office

BOEM Pacific Regional Office Staff

- **Rick Yarde, Office of Environment Regional Supervisor**
- **Necy Sumait, Office of Strategic Resources Regional Supervisor**
- **Frank Pendleton, GIS Analyst**
- **Whitney Hauer, Ph.D., Renewable Energy Specialist**



BOEM Wind Energy Authorization Process



Planning & Analysis

~ 2 YEARS

- Intergovernmental Task Force
- Request for Information or Call for Information and Nominations (Call)
- Area Identification
- Environmental Reviews



Leasing

~ 1-2 YEARS

- Publish Leasing Notices
- Conduct Auction or Negotiate Lease Terms
- Issue Lease(s)



Site Assessment

UP TO 5 YEARS

- Site Characterization
- Site Assessment Plan



Construction & Operations

~ 3 YEARS (+25)

- Construction & Operations Plan
- Facility Design Report and Fabrication & Installation Report
- Decommissioning
- Environmental and Technical Reviews

Oregon Call issued April 29, 2022

- **BOEM coordinates and consults with affected Tribal, State, and local governments and other federal agencies**
 - **Multiple opportunities for public input**



Call for Information and Nominations (Call)

- **Call issued on April 29, 2022 with 60-day comment period**
- **Invites public comment on and assesses interest in possible commercial wind energy leasing**
- **Call Areas are of a sufficient size to allow for winnowing**
- **Considering 3 gigawatts for near-term commercial development for the first leasing activities offshore Oregon**
 - Less than one-fourth of the Call Areas
- **Call notice available at www.boem.gov/Oregon**

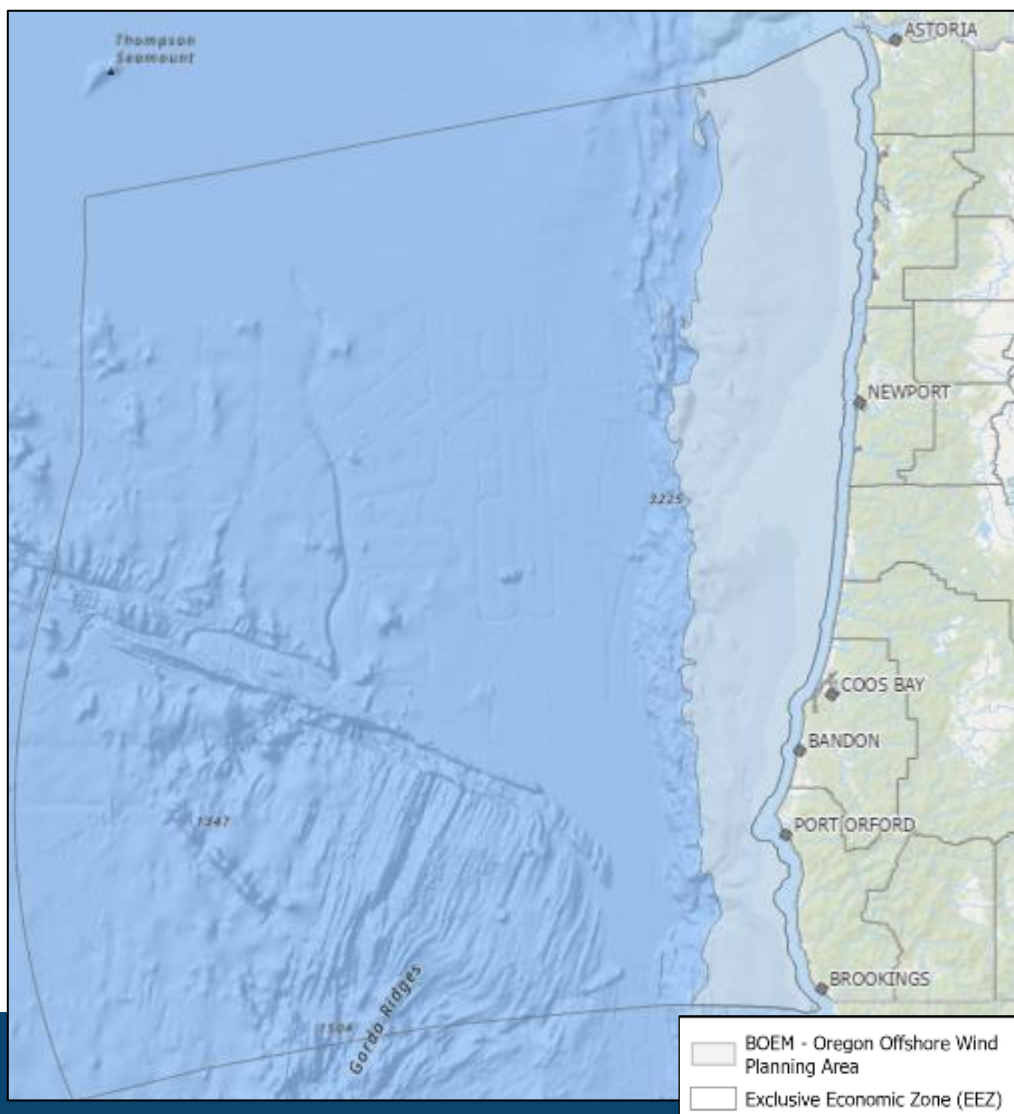
Call Area	Approx. Offshore Wind Energy Capacity Gigawatts	Oregon Call Areas		
		Acres	Square miles	Square kilometers
Coos Bay	10.6	872,854	1,364	3,532
Brookings	3.5	286,444	448	1,159
Total	14.1	1,159,298	1,811	4,692



Oregon Offshore Wind Energy Planning

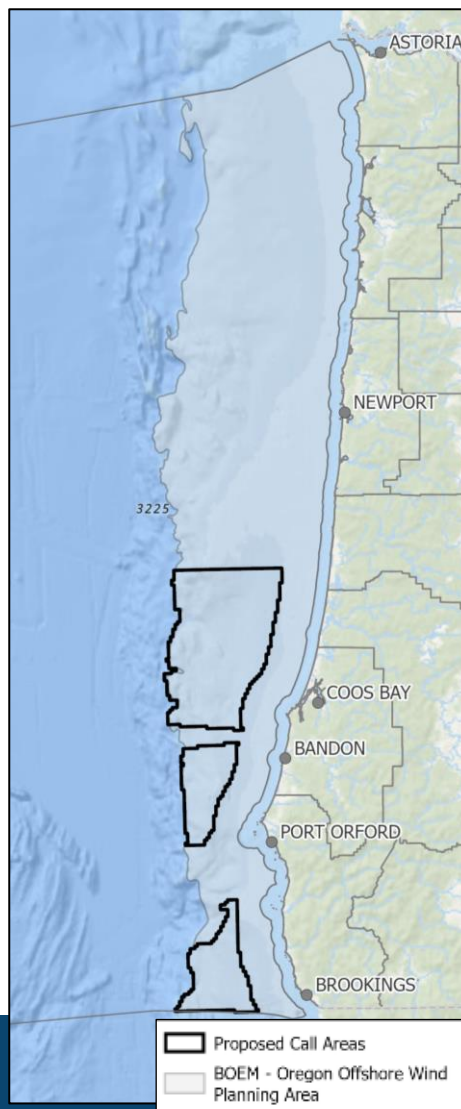
BOEM Oregon Offshore Wind Planning Area

Data Gathering, June 2020-January 2022



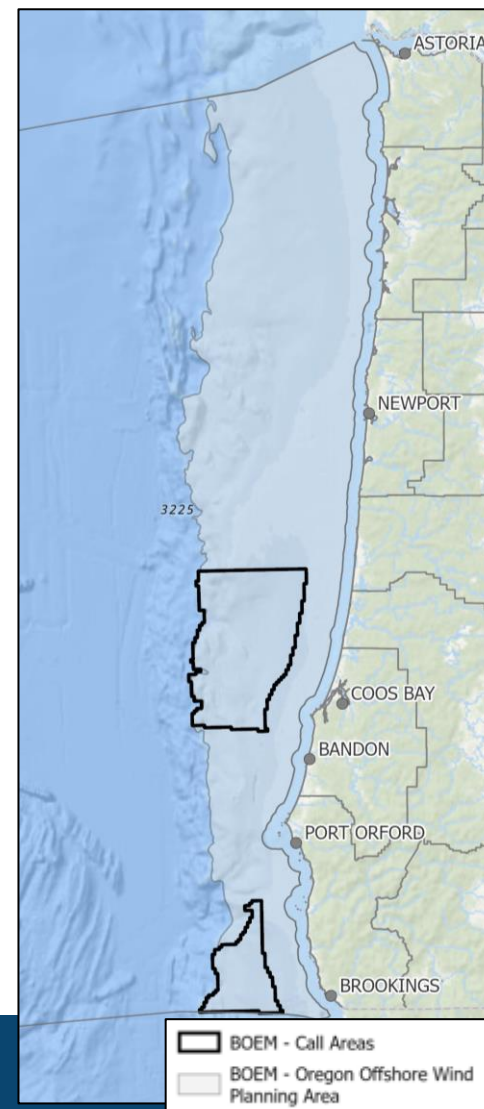
Proposed Call Areas

Task Force Meeting, February 2022



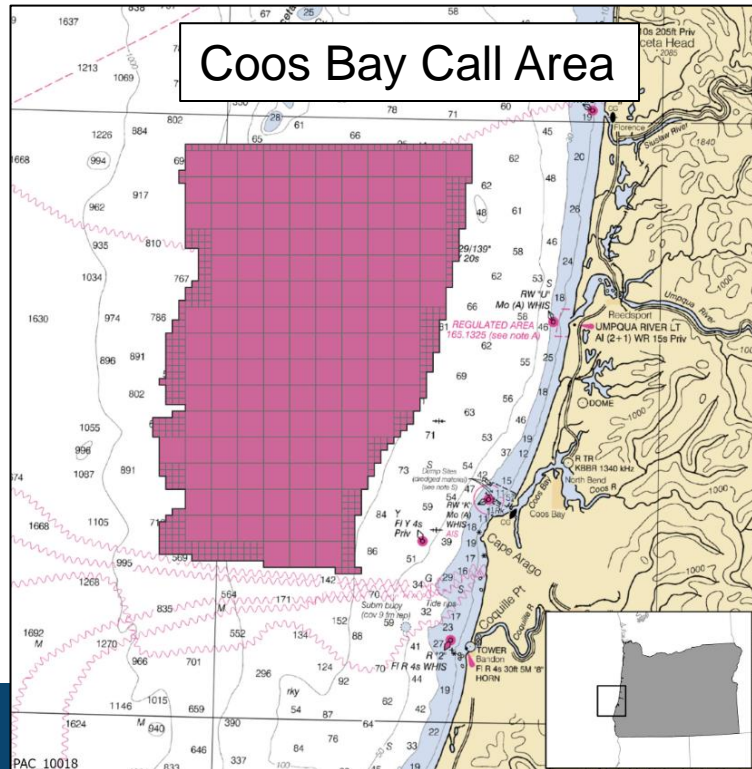
Call Areas

Federal Notice, April 2022

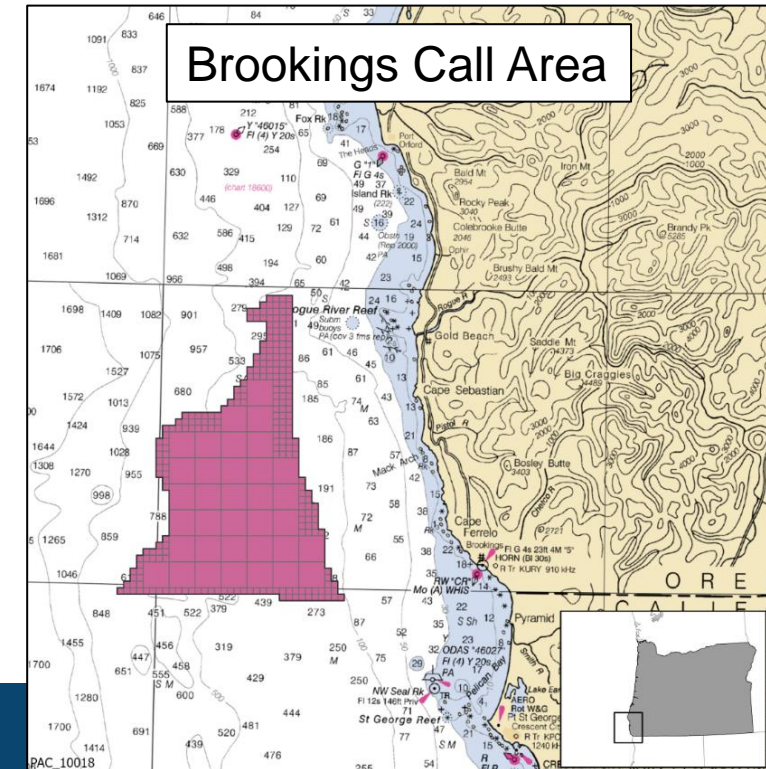


Call Area Details

- 13.8 Miles offshore to approx. 65 miles offshore
- Water depth ranges from 394 to 722 feet (120 to 220 meters) at the eastern boundary up to 4,265 feet (1,300 meters)
- Approx. 67 miles in length from north to south
- Approx. 41 miles in width from east to west



- 13.8 Miles offshore to approx. 46 miles offshore
- Water depth ranges from 410 to 1,115 feet (125 to 340 meters) at the eastern boundary up to 4,265 feet (1,300 meters)
- Approx. 46 miles in length from north to south
- Approx. 22 miles in width from east to west

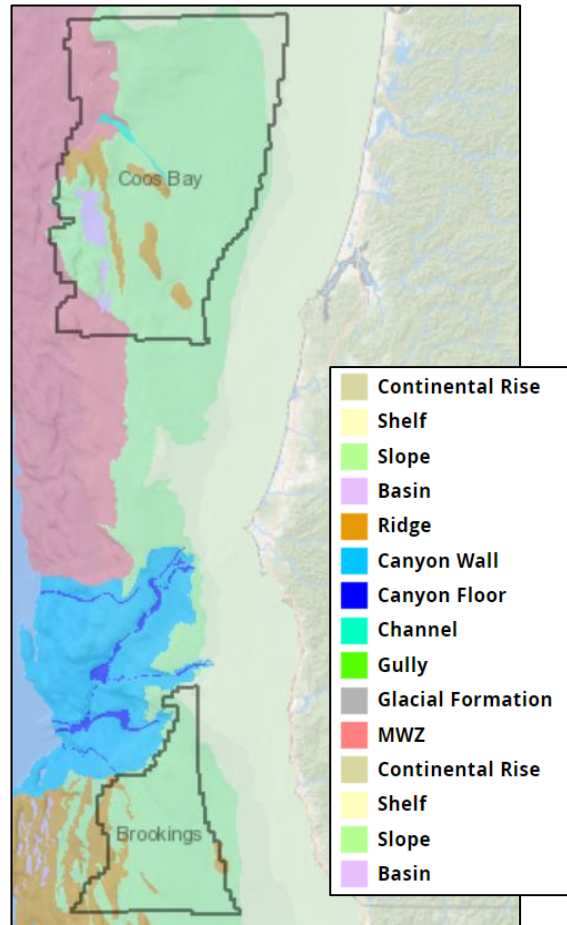


Parameters for the Development of Call Areas

- **Demand for renewable energy**
- **Suitability for offshore wind:**
 - Wind resource and cost of energy
 - Depth and slope
 - Transmission availability
- **Maritime navigation**
- **Existing submarine cables**
- **Commercial fishing**
- **Wildlife and habitat:**
 - Marine mammals
 - Sea turtles
 - Marine birds
 - Marine habitat
- **Submerged landforms**
- **Tribal considerations**
- **Department of Defense considerations**

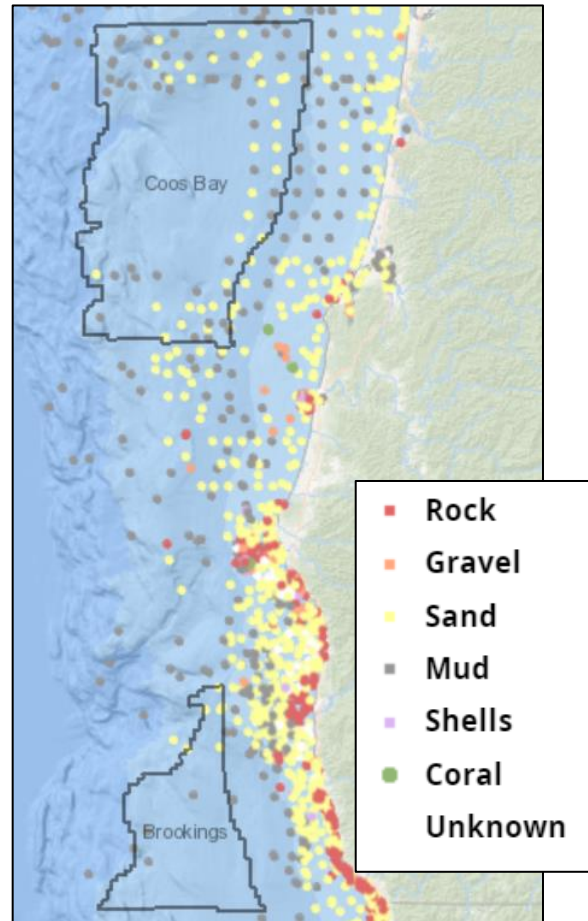


OROWindMap: Seafloor Conditions



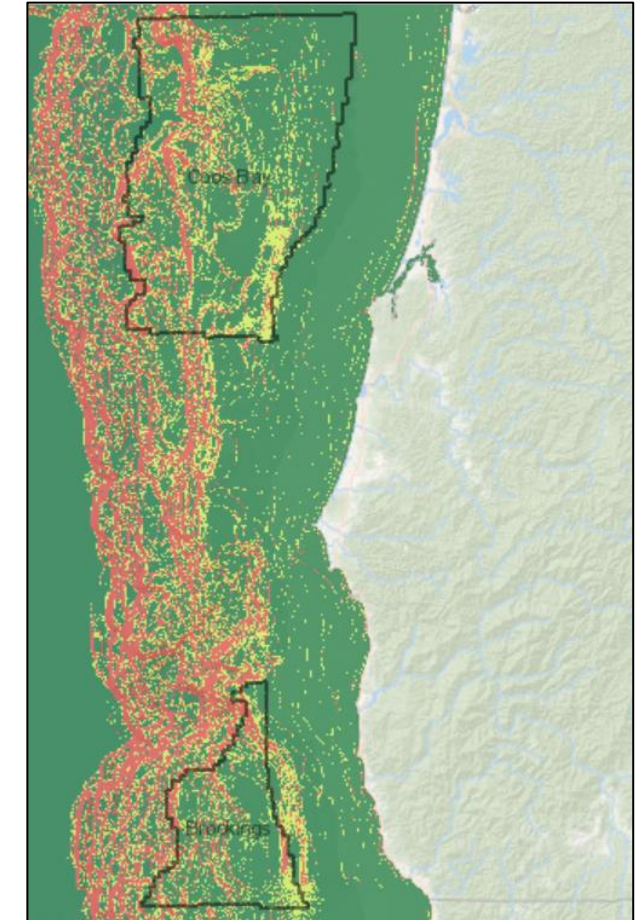
Physiographic Habitat

<https://bit.ly/3lv3fQ5>



Surficial Sediment Classification

<https://bit.ly/3lrSdvd>

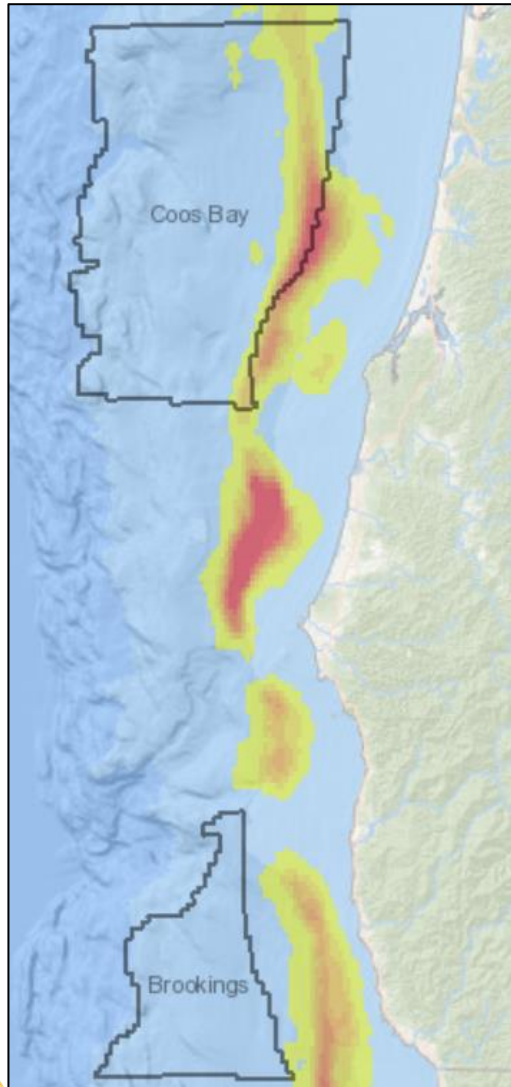


Bathymetric Slope

<https://bit.ly/3sMGlro>



OROWindMap: Fishing (Included in Oregon Call)



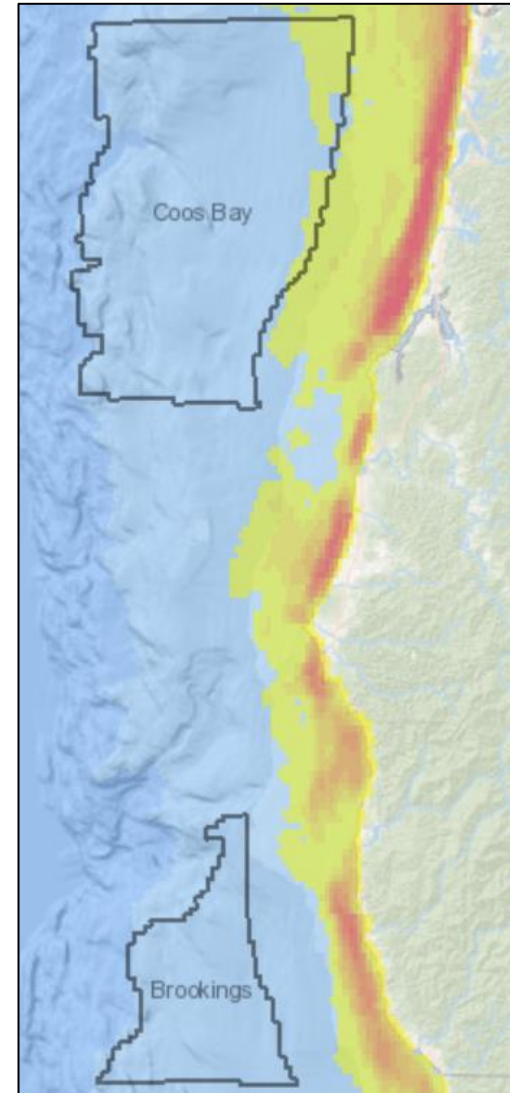
Pink Shrimp Trawl

Fishing Effort

1995-2020

ODFW

<https://bit.ly/3G6bSu3>



Dungeness Crab

Fishing Effort

2007-2020

ODFW

<https://bit.ly/3G6bSu3>

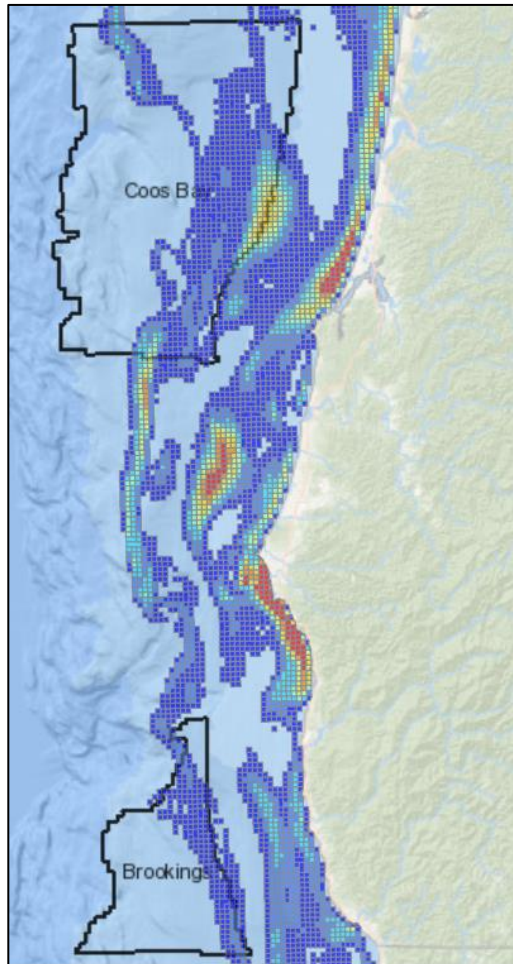


OROWindMap: Additional Fisheries

All Fisheries

VMS, 2010-2017

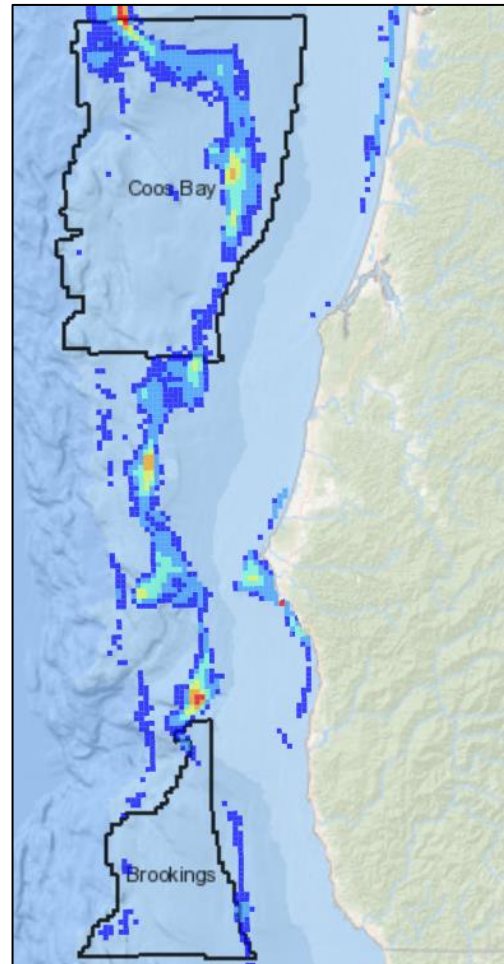
<https://bit.ly/3wJhMNr>



Groundfish

VMS, 2010-2017

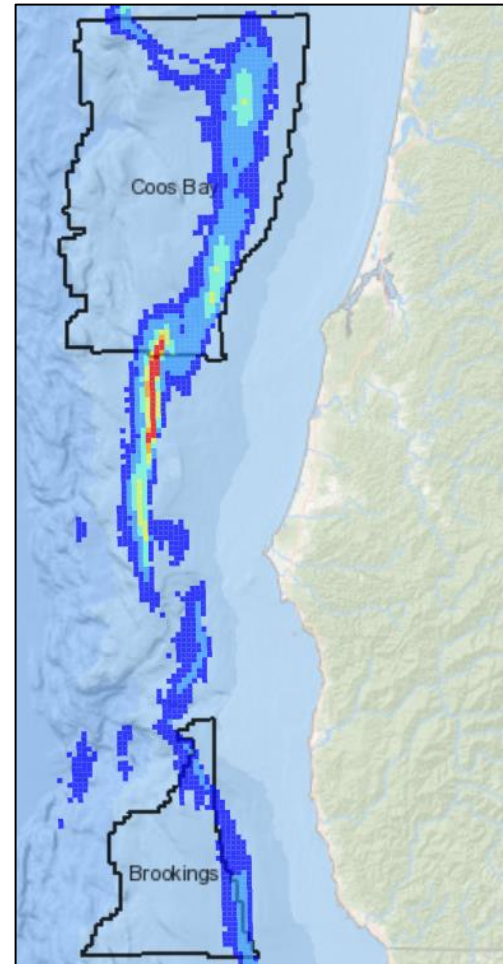
<https://bit.ly/3wJhMNr>



Whiting

VMS, 2010-2017

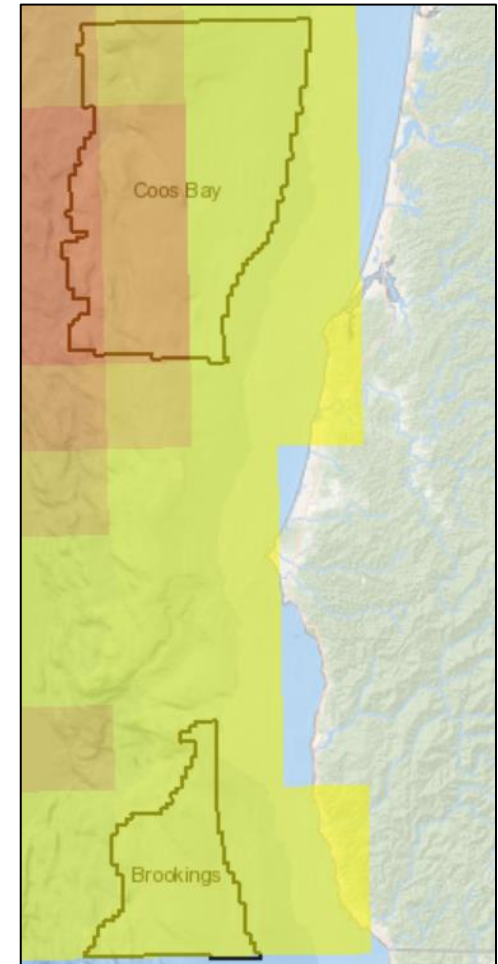
<https://bit.ly/3wJhMNr>



Albacore Commercial

ODFW, 1995-2021

<https://bit.ly/3wJhMNr>



OROWindMap Data Catalog

- **Data records in OROWindMap**
<https://offshorewind.westcoastoceans.org/orowindmap-data-catalog/>
 - Biological Data Resources
 - Fish: <https://offshorewind.westcoastoceans.org/orowindmap-data-catalog/marine-fish/>
 - Human Use Data Resources: Fishing
 - BOEM VMS: <https://offshorewind.westcoastoceans.org/orowindmap-data-catalog/fishing-boem-vessel-monitoring-system-vms-analysis/>
 - Ecotrust: <https://offshorewind.westcoastoceans.org/orowindmap-data-catalog/fishing-ecotrust-uses-and-values-project/>
 - Marine Cadastre: <https://offshorewind.westcoastoceans.org/orowindmap-data-catalog/fishing-marine-cadastre/>
 - NMFS: <https://offshorewind.westcoastoceans.org/orowindmap-data-catalog/fishing-northwest-fisheries-science-center-nwfsc-fram-database/>
 - ODFW: <https://offshorewind.westcoastoceans.org/orowindmap-data-catalog/fishing-oregon-department-of-fish-and-wildlife-odfw/>



Requested Information from Interested or Affected Parties

- **Feedback on the Call Areas is essential to help BOEM identify areas suitable for potential leasing**
- **Specific and detailed comments on features, activities, or concerns in or around the Call Areas**
 - Socioeconomic, cultural, biological, environmental, geological, and geophysical information
 - Known archaeological and/or cultural resources
 - Historic properties
 - Other uses: vessel navigations, recreational and commercial fishing
 - Visual resources
 - Environmental justice
 - Offshore wind energy industry feedback
 - Coastal or onshore activities needed to support offshore wind development
 - Other relevant information



How to Comment

- Public comment period ends at 8:59 pm PT on Tuesday, June 28, 2022
- Supplement your comment narrative with a map (optional)
- Submit public comment:

1. **Federal eRulemaking Portal:**

<http://www.regulations.gov>

Search docket number BOEM-2022-0009

2. **Mail:**

Dr. Whitney Hauer
Bureau of Ocean Energy Management
Office of Strategic Resources
760 Paseo Camarillo, Suite 102
Camarillo, CA 93010

Supplement Public Comment with Maps from OROWindMap

On April 29, 2022, the Bureau of Ocean Energy Management (BOEM) issued a Call for Information and Nominations (Call) to invite public comment on and assess interest in possible commercial wind energy leasing on the U.S. Outer Continental Shelf offshore Oregon. BOEM welcomes comments and information regarding site conditions, resources, and multiple uses in close proximity to or within the Call Areas. Comments must be received in response to the Call by June 28, 2022.

The Oregon Offshore Wind Energy Mapping Tool (OROWindMap) accesses relevant datasets and provides data visualization capabilities. OROWindMap is a planning tool that can be used to supplement the narrative part of your public comment if you would like to include a map to highlight specific data layers or to create and share map annotations (drawings).

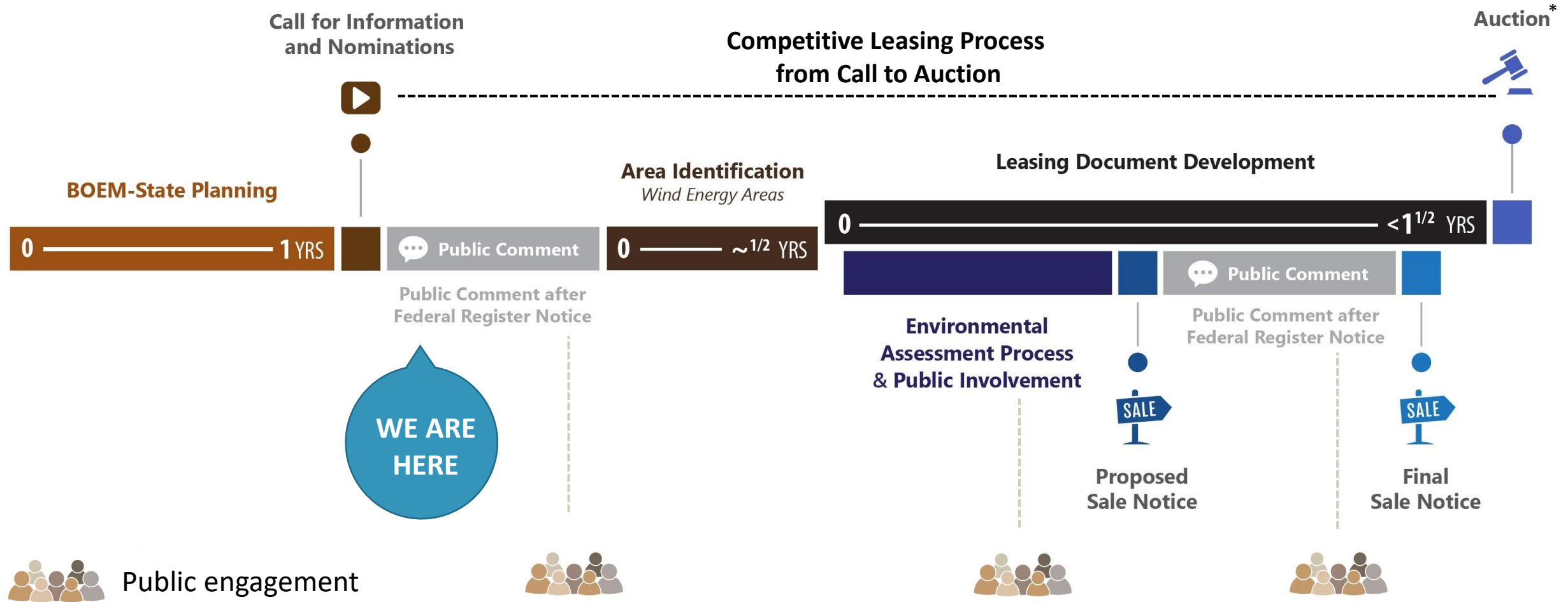
The following instructions provide a brief overview of how to use OROWindMap to supplement your public comment:

1. Visit OROWindMap at <https://offshorewind.westcoastcoasts.org>.
2. Create an account or log in to an existing account by selecting 'LOG IN' at the top right corner of the screen and following the instructions. This will allow you to use the 'Drawing' tool on OROWindMap, which may be useful for your public comment.
3. Turn relevant data layers on or off by selecting individual layers from the 'Data' tab of the data pane or using the search bar. These layers are organized into biological, human use, and physical categories. It is recommended that you include the layer 'Oregon Offshore Wind Call Areas, BOEM, April 2022' (<https://bit.ly/3U4QYQC>) in any maps to show how your comment is related to the Oregon Call Areas.
4. Organize data layers by selecting the 'Active' tab on the data pane and using your cursor to drag the layers up or down into the order you prefer. This changes which data layers are viewed on top of one another in the map viewer and can affect the appearance of your map.

<https://www.boem.gov/renewable-energy/state-activities/orowindmappubliccomments>



Oregon Planning Prior to a Lease Auction

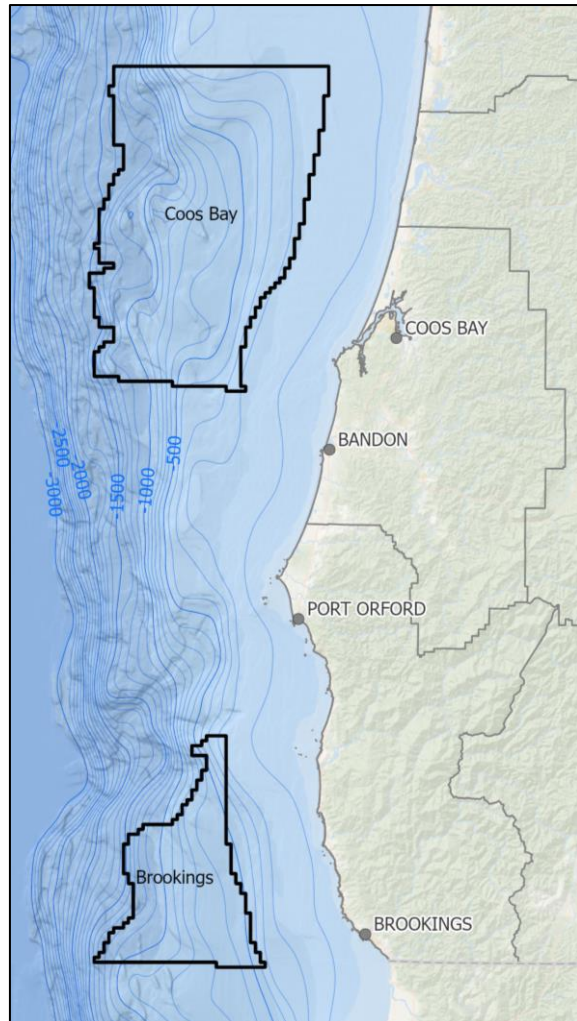


*A lease provides the lessee the right to submit a Site Assessment Plan (SAP) and a Construction and Operations Plan (COP) for technical and environmental review and approval. A lease does not, by itself, authorize any activity within the leased area.

Contact Information

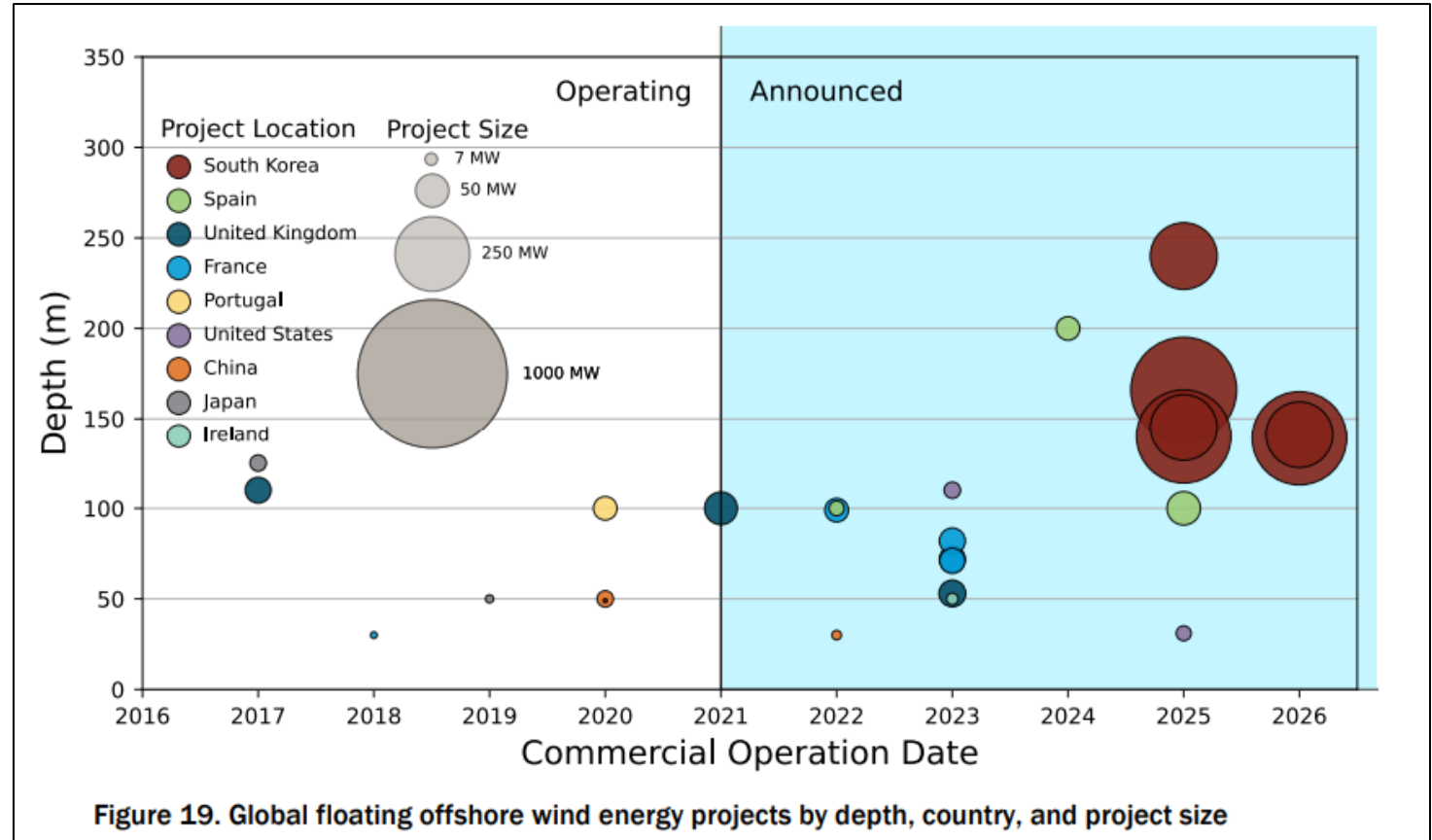
- Rick Yarde | Office of Environment Regional Supervisor
richard.yarde@boem.gov | 805-384-6383
- Nocy Sumait | Office of Strategic Resources Regional Supervisor
nocy.sumait@boem.gov | 805-384-6320
- Frank Pendleton | GIS Analyst
frank.pendleton@boem.gov | 805-384-6313
- Whitney Hauer, Ph.D. | Renewable Energy Specialist
whitney.hauer@boem.gov | 805-384-6263





Bathymetric Contours

<https://bit.ly/3lv3fQ5>



U.S. DOE Offshore Wind Market Report: 2021 Edition

https://www.energy.gov/sites/default/files/2021-08/Offshore%20Wind%20Market%20Report%202021%20Edition_Final.pdf