



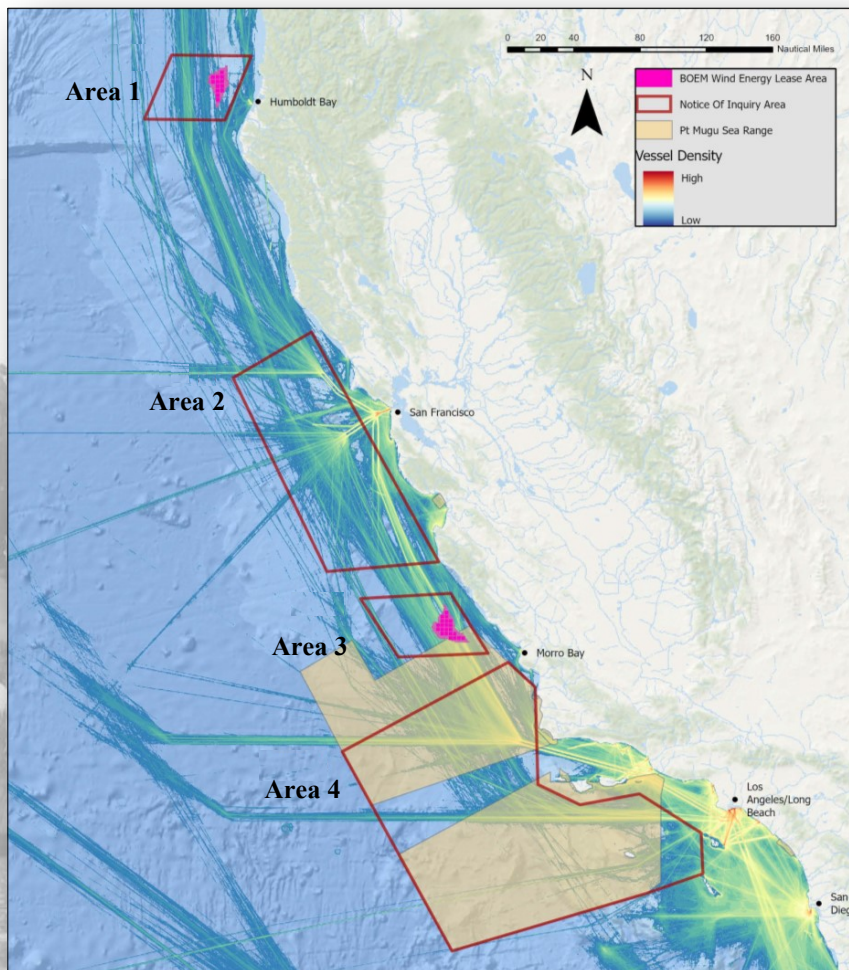
U.S. COAST GUARD CALIFORNIA – VESSEL TRAFFIC ASSESSMENT

The U.S. Coast Guard is actively conducting a Pacific Coast - Port Access Route Study (PAC-PARS). USCG District Eleven has identified four areas of interest for further evaluation and have published a Notice of Inquiry (NOI) - Docket Number: **USCG-2021-0345**

- ▶ Area 1 - Bureau of Ocean Energy Management Humboldt Bay offshore Wind Energy Area
- ▶ Area 2 - The areas outside of the San Francisco Bay
- ▶ Area 3 - Bureau of Ocean Energy Management Morro Bay offshore Wind Energy Area
- ▶ Area 4 - Near Point Mugu and South of the Channel Islands in the Pacific Missile Area Range

District Eleven requests public comments regarding vessel traffic patterns and waterway uses in these areas. The information we receive will be used to make recommendations regarding maritime safety and the improvement of waterway operations and vessel movement along the California Coast. **These are a few of the questions to inspire dialogue that are included in the Notice of Inquiry:**

- > Do you perceive increasing traffic density to cause increased navigational risk?
- > What improvements to waterway management would you like to see? If none, why?
- > What navigational hazards do vessels operating in the focus area face?
- > Do you think the CG should create designated fairways, traffic separation schemes for vessels, or exclusion/restricted areas around wind farms?



The Notice of Inquiry and the full list of questions can be found by scanning this QR code:



or visit
www.regulations.gov
& search docket
number:
USCG-2021-0345

Questions or concerns
may be sent to:
PACPARS@uscg.mil

Comments and related material must be received by 26 May, 2022

Following the NOI comment period, the Coast Guard aims to publish the draft results of study before the end of 2022

