

INTERNATIONAL PACIFIC



HALIBUT COMMISSION

Agenda Item F.1.a
Supplemental IPHC Presentation 1
March 2022

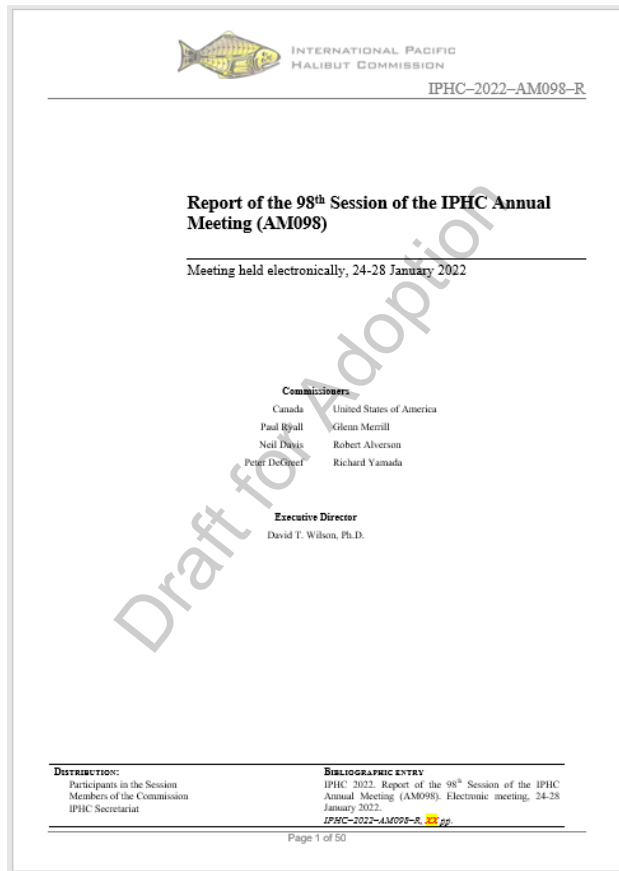
Outcomes of the 98th Session of the IPHC Annual Meeting (AM098)



98th Session of the IPHC Annual Meeting (AM098)

- 24 - 28 January 2022
- Held electronically (**199** participants)
- Open to public
- AM098 webpage:

<https://www.iphc.int/venues/details/98th-session-of-the-iphc-annual-meeting-am098>



Mortality limits adopted for 2022

IPHC Regulatory Area	Million Pounds	Tonnes
Canada Total: 2B	7.56	3,429
USA: 2A	1.65	748
USA: 2C	5.91	2,681
USA: 3A	14.55	6,600
USA: 3B	3.90	1,769
USA: 4A	2.10	953
USA: 4B	1.45	658
USA: 4CDE	4.10	1,860
USA: Total	33.66	15,268
Total: IPHC Convention Area	41.22	18,697



Mortality limits for 2021 to 2022

Contracting Party IPHC Regulatory Area	2021 TCEY (Mlbs)	2022 TCEY (Mlbs)	Change
<u>Canada</u> Total: 2B	7.00	7.56	8%
USA: 2A	1.65	1.65	0
USA: 2C	5.80	5.91	1.9%
USA: 3A	14.00	14.55	3.9%
USA: 3B	3.12	3.90	25.0%
USA: 4A	2.05	2.10	2.4%
USA: 4B	1.40	1.45	3.6%
USA: 4CDE	3.98	4.10	3.0%
<u>United States of America</u> Total	32.00	33.66	5.2%
Total (IPHC Convention Area)	39.00	41.22	5.7%



2022 Mortality limits: detailed projections

	2A	2B	2C	3A	3B	4A	4B	4CDE	Total
Commercial discards	0.07	0.21	NA	NA	0.19	0.07	0.05	0.04	0.62
O26 Non-directed discards	0.09	0.21	0.07	0.72	0.35	0.24	0.12	1.96	3.76
Recreational	NA	0.03	1.09	1.58	0.01	0.01	0.00	0.00	2.71
Subsistence	NA	0.41	0.29	0.18	0.01	0.01	0.00	0.04	0.94
Total non-FCEY	0.16	0.85	1.45	2.48	0.55	0.34	0.17	2.04	8.03
Commercial discards	NA	NA	0.14	0.41	NA	NA	NA	NA	0.54
Recreational	0.60	1.01	0.82	2.11	NA	NA	NA	NA	4.54
Subsistence	0.03	NA	NA	NA	NA	NA	NA	NA	0.03
Commercial landings	0.86	5.70	3.51	9.55	3.35	1.76	1.28	2.06	28.08
Total FCEY	1.49	6.71	4.46	12.07	3.35	1.76	1.28	2.06	33.19
							4C FCEY	0.92	
							4D FCEY	0.92	
							4E FCEY	0.22	
TCEY	1.65	7.56	5.91	14.55	3.90	2.10	1.45	4.10	41.22
U26 Non-directed discards	0.00	0.03	0.00	0.29	0.07	0.08	0.01	0.74	1.23
Total	1.65	7.59	5.91	14.84	3.97	2.18	1.46	4.84	42.45

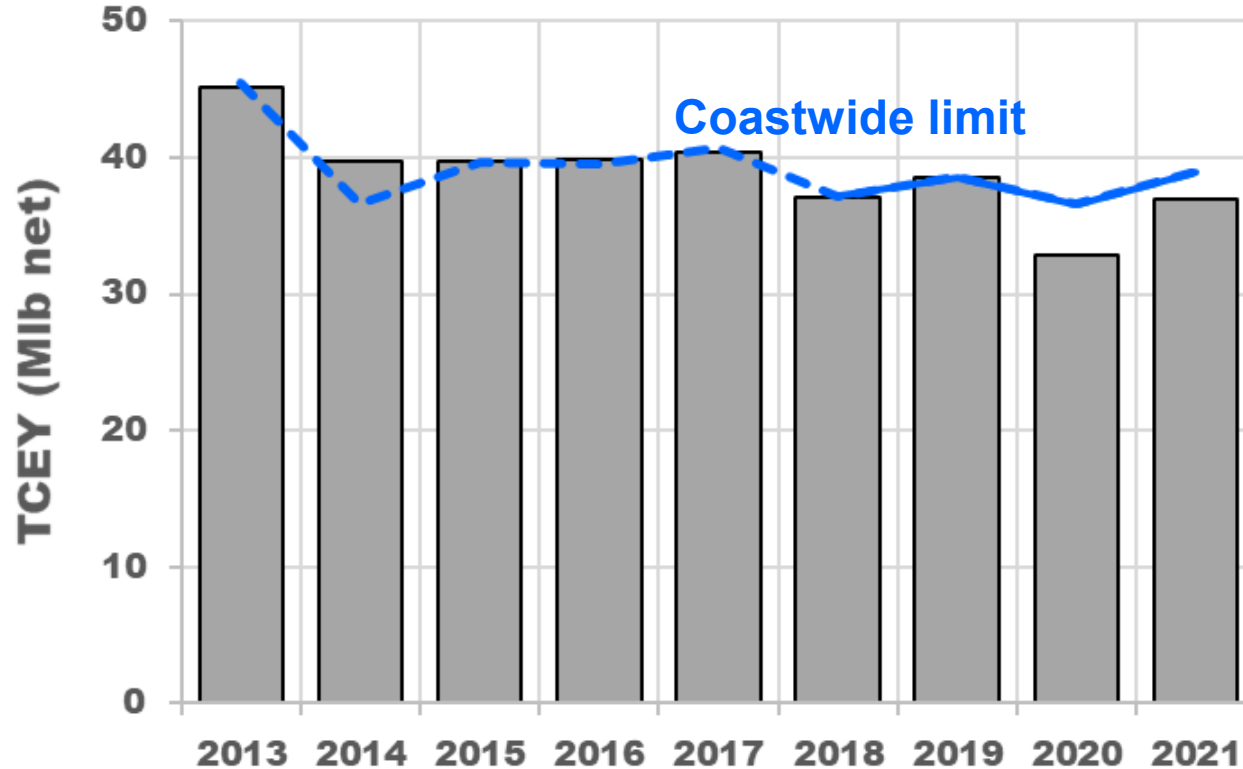


Stock assessment summary

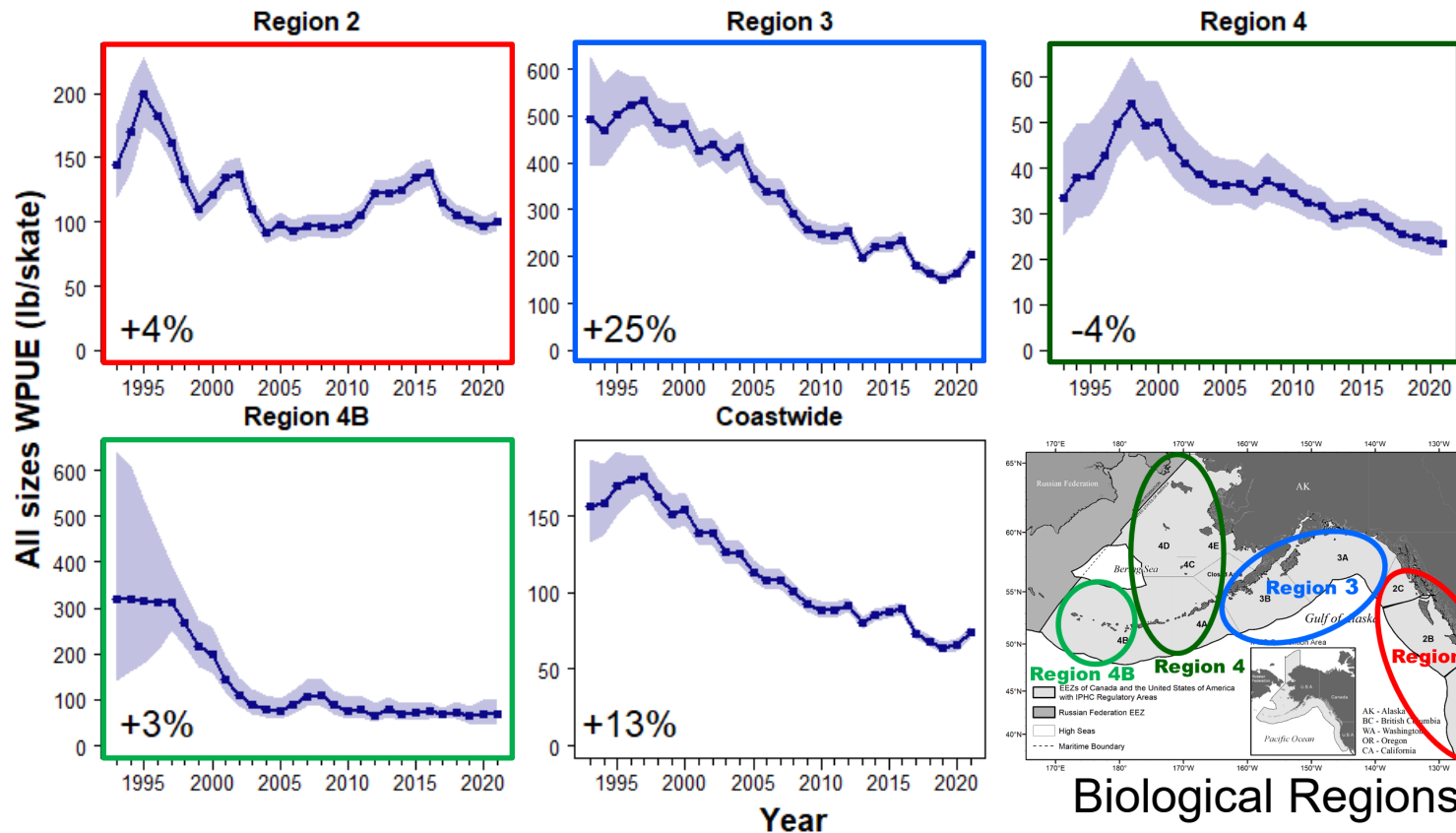
- Indices were up in 2021 with younger fish from the 2012 year-class increasingly important
- Stock distribution is trending back toward Biological Region 3
- Spawning biomass trend is nearly flat with little projected change at $F_{43\%}$
- Projections rely on the 2012 year-class maturing over the next ~3 years, but the scale and biology of this cohort remain uncertain



Recent mortality vs. limits

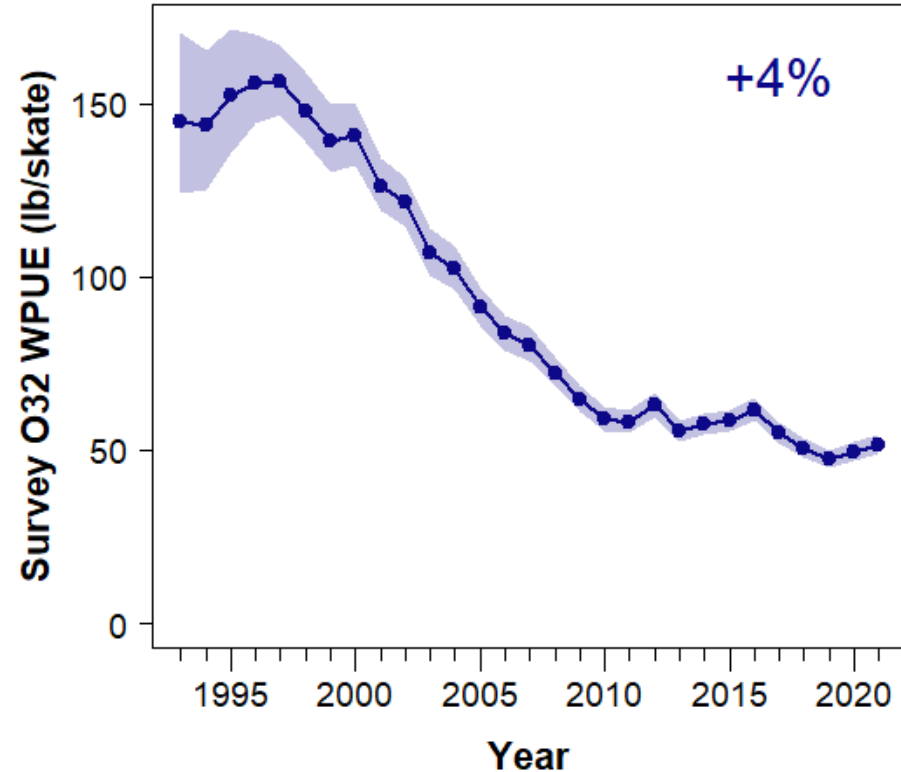


Modelled survey trends (all sizes WPUE)

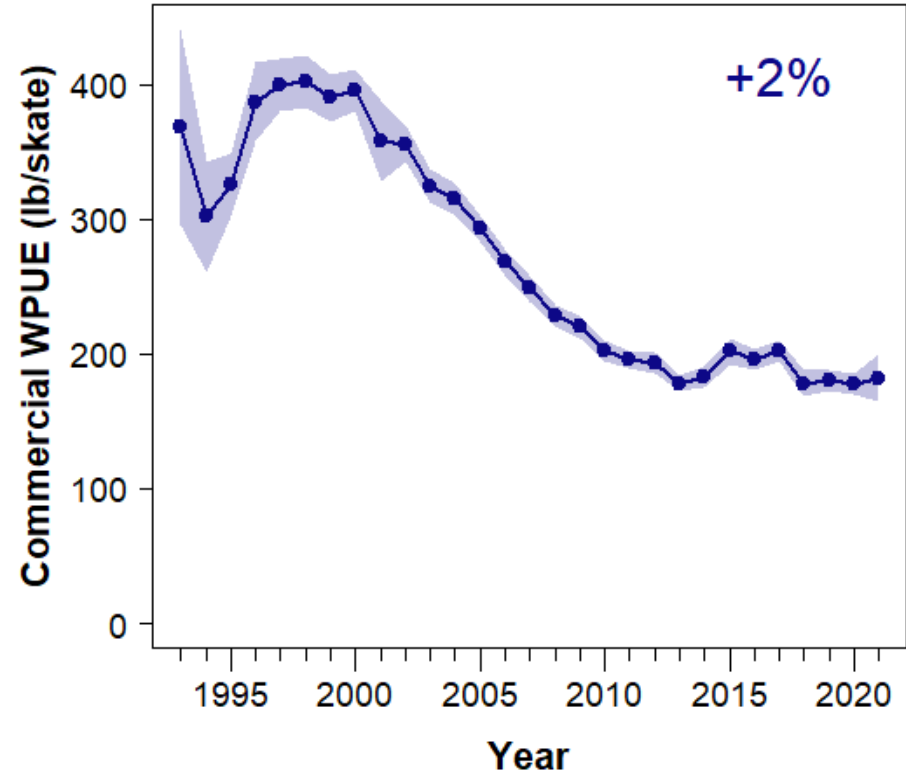


O32 WPUE (lb/skate) trends (1993+)

Coastwide survey

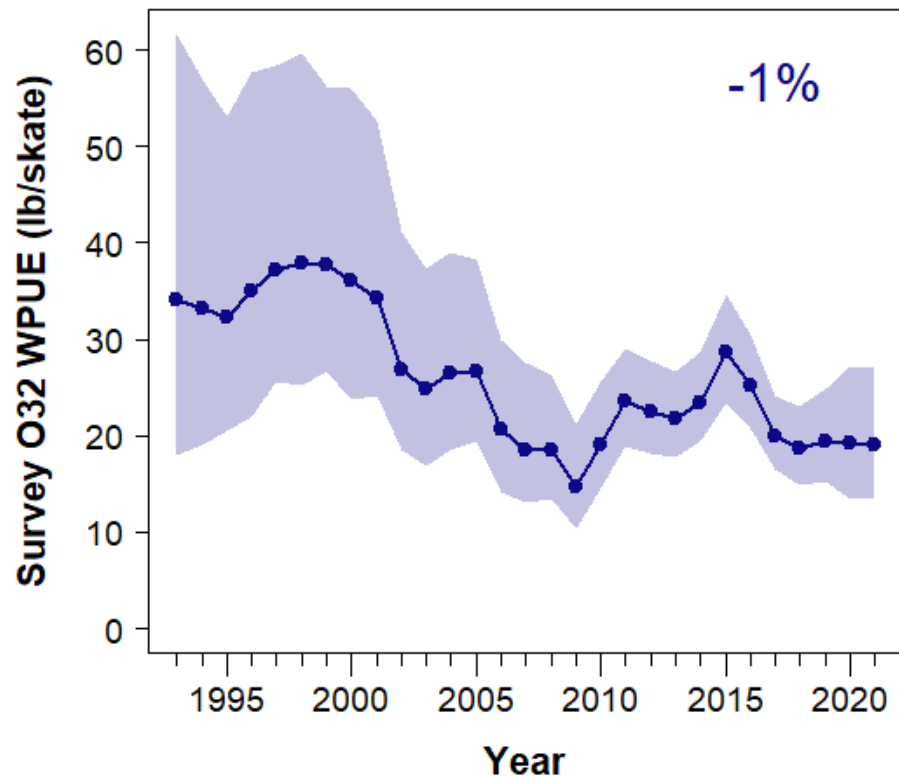


Coastwide commercial

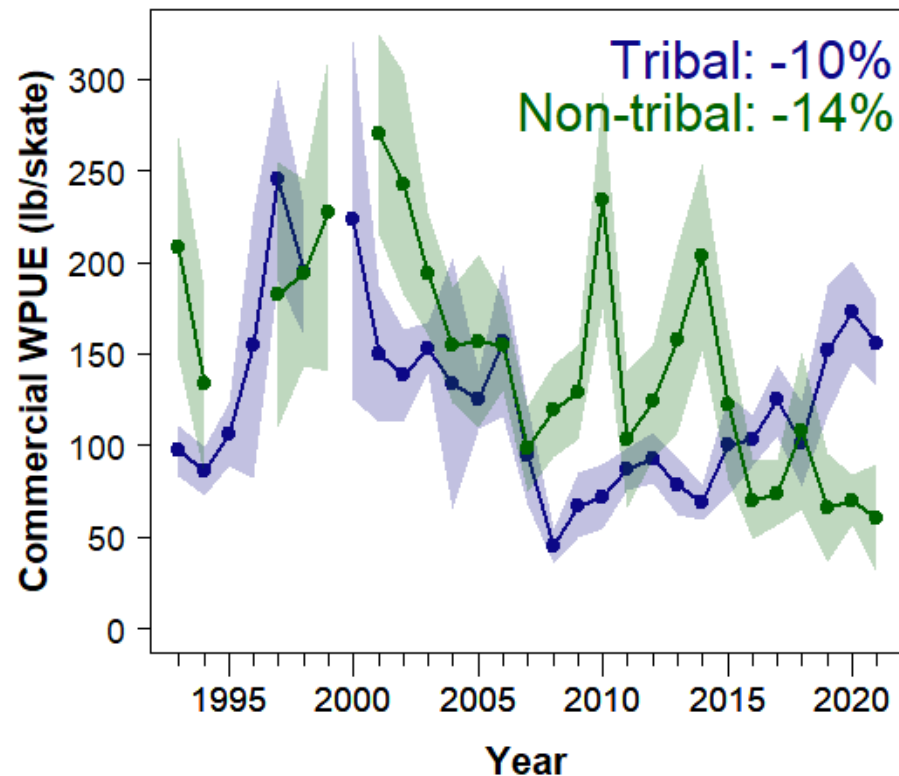


O32 WPUE (lb/skate) trends (1993+)

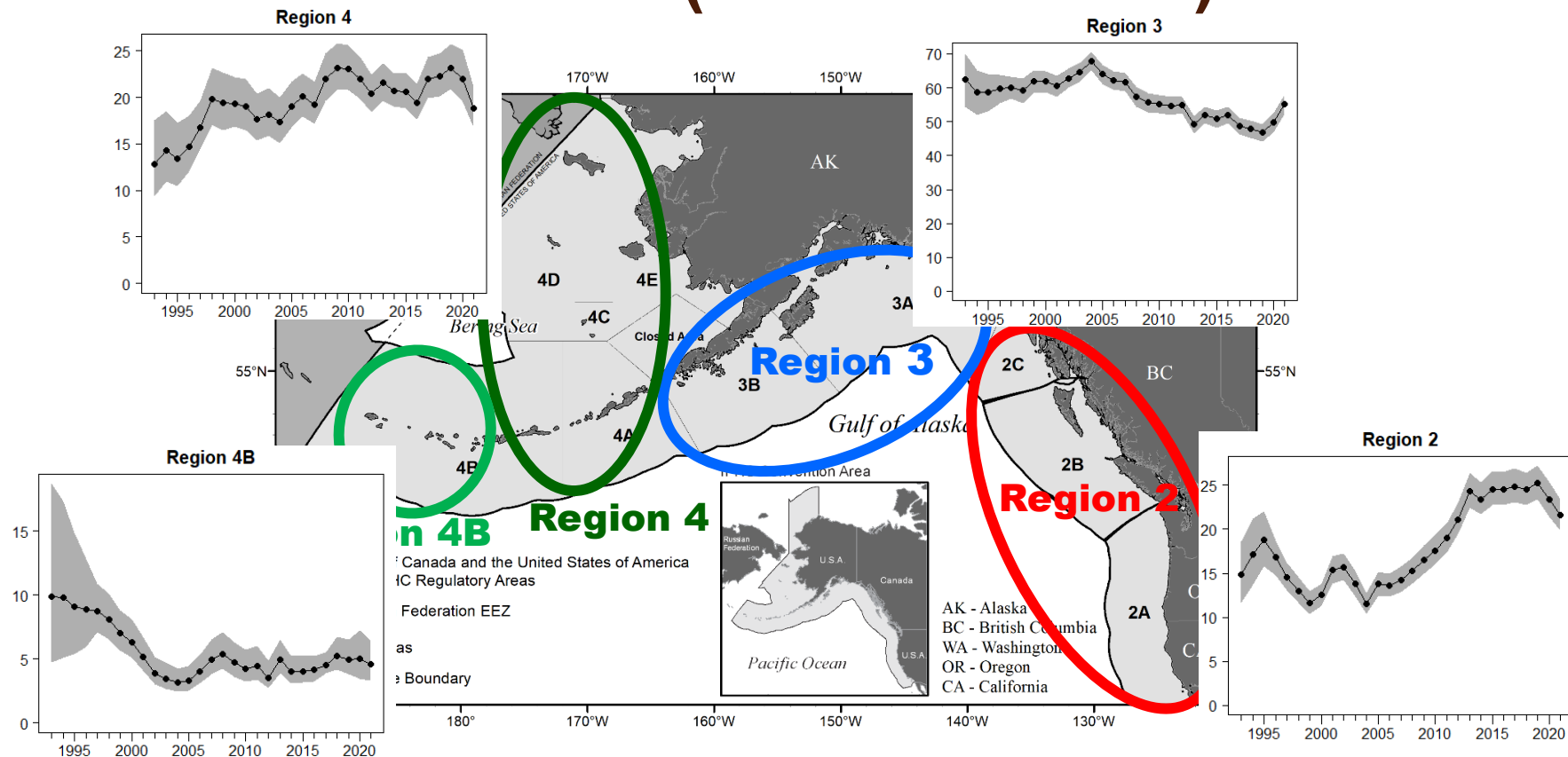
2A survey



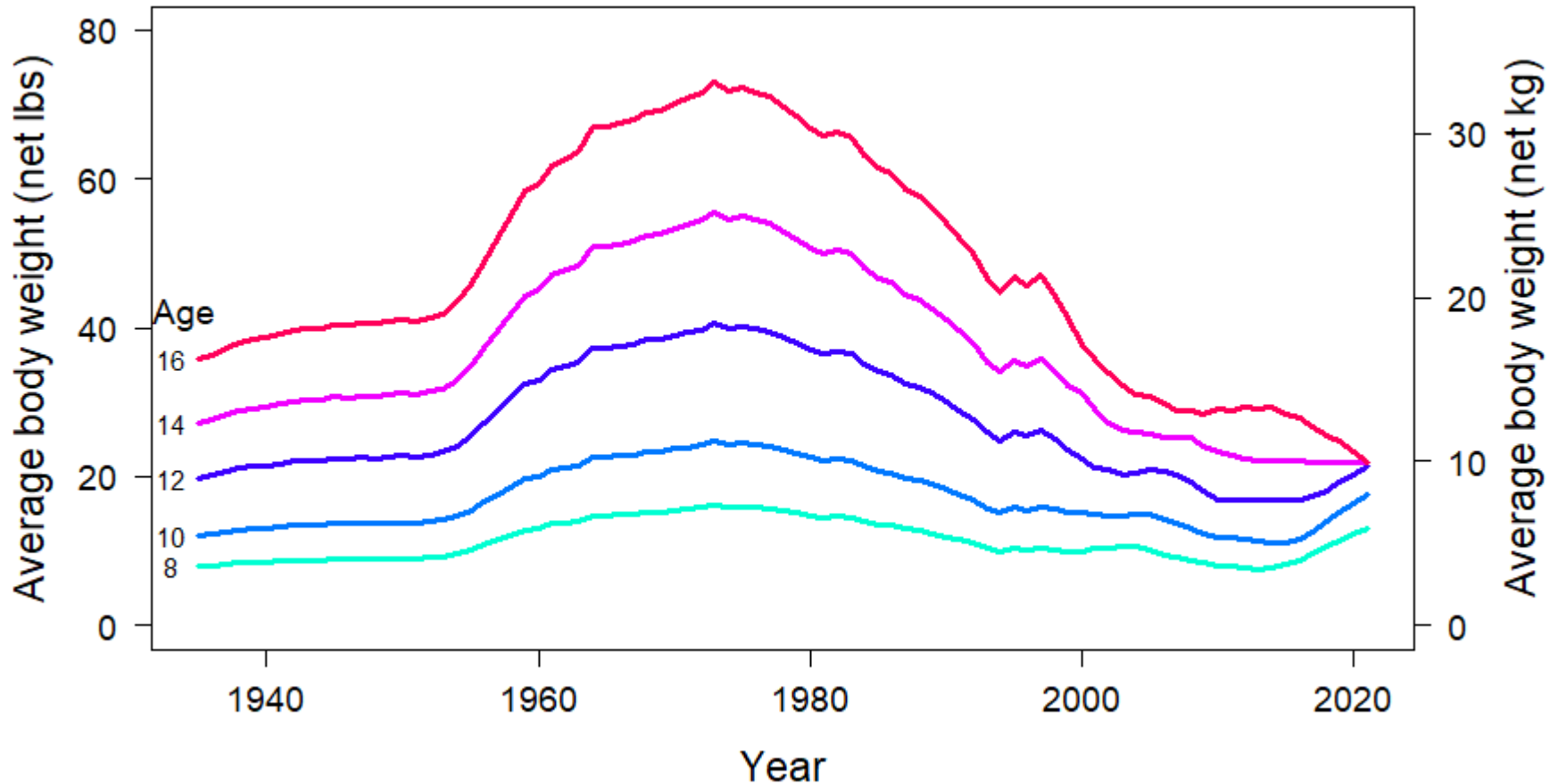
2A commercial



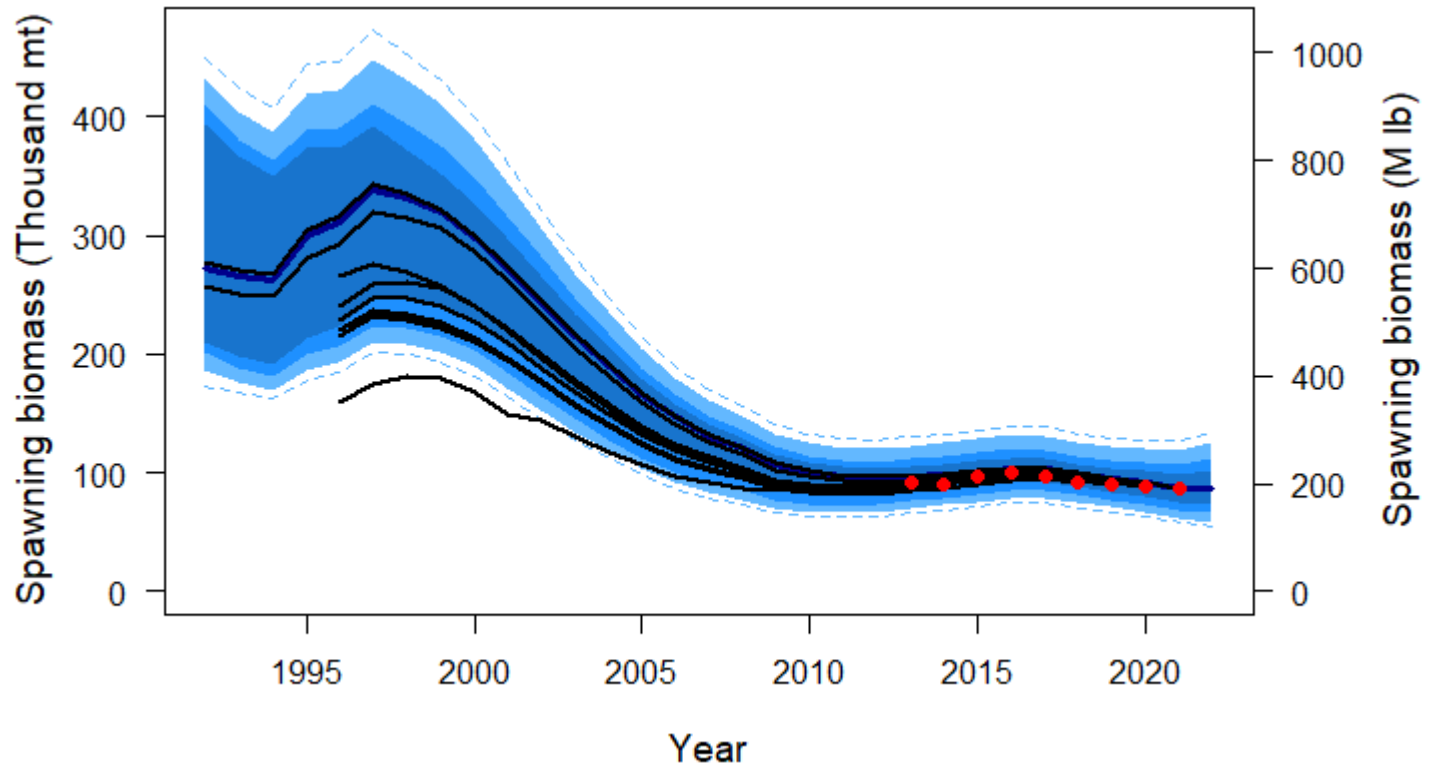
Stock distribution (% of biomass)



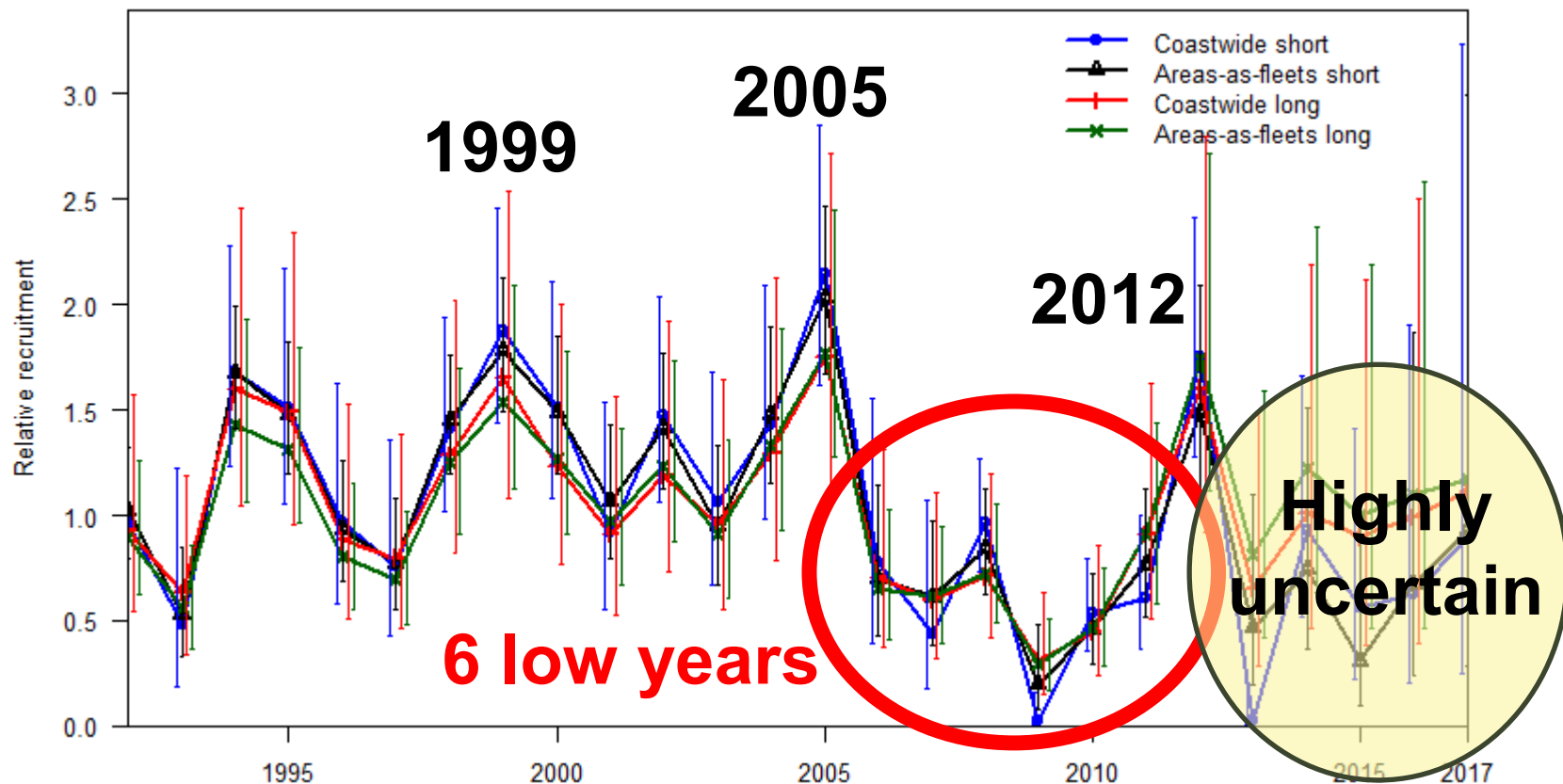
Historical coastwide female weight-at-age



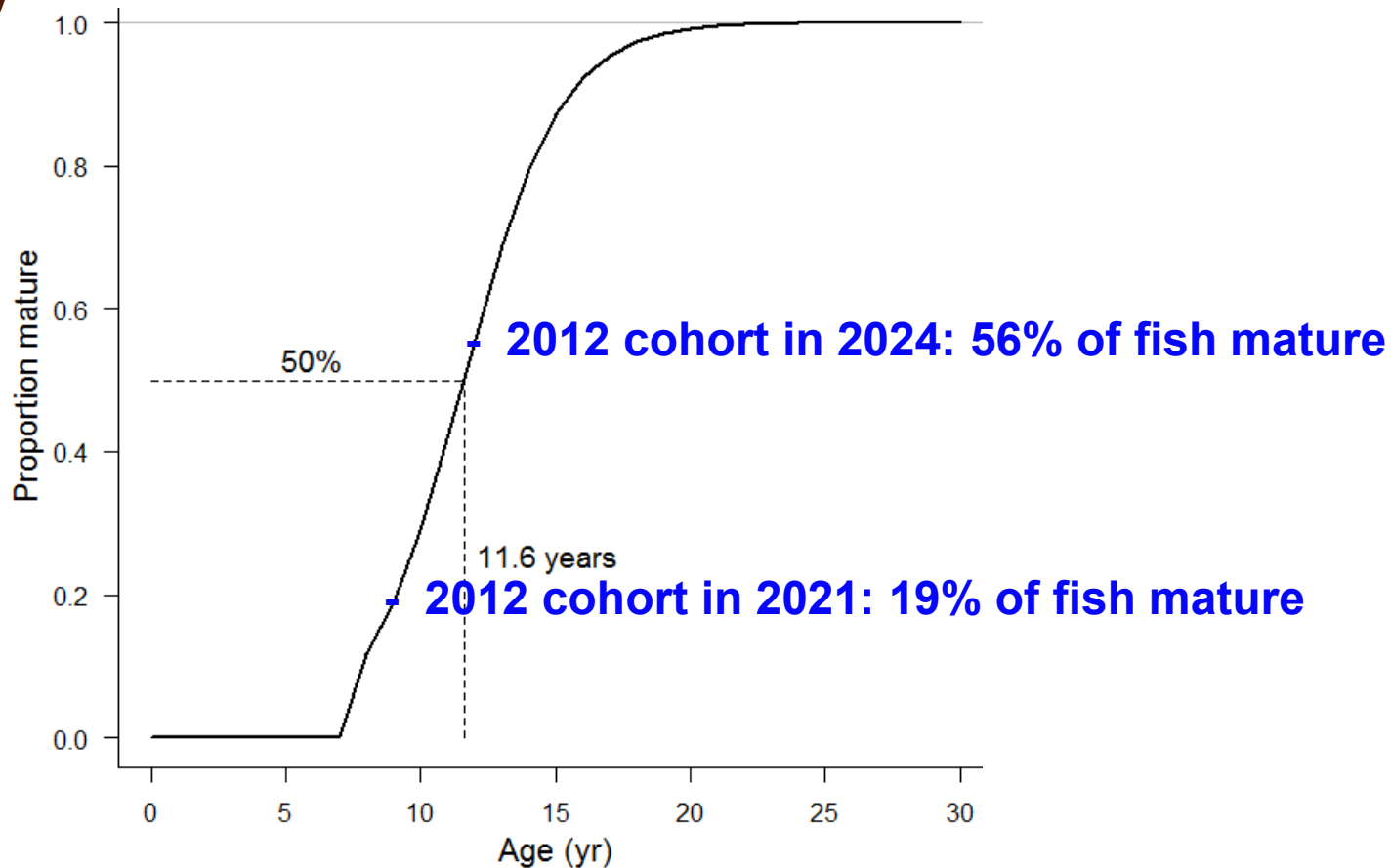
Comparison with previous assessments



Relative recruitment estimates



Maturity



Assessment summary table

Indicators	Values	Trends	Status
BIOLOGICAL			
SPR₂₀₂₁: P(SPR<43%): P(SPR<limit):	46% (35-63%) 47% LIMIT NOT SPECIFIED	FISHING INTENSITY INCREASED FROM 2020 TO 2021	FISHING INTENSITY BELOW REFERENCE LEVEL
SB₂₀₂₂ (MIb): SB₂₀₂₂/SB₀: P(SB₂₀₂₂<SB₃₀): P(SB₂₀₂₂<SB₂₀):	191 (129–277) MLBS 33% (22-54%) 45% <1%	SB DECREASED 17% FROM 2016 TO 2022	NOT OVERFISHED
Biological stock distribution:	SEE TABLES AND FIGURES	REGION 3 INCREASING	WITHIN HISTORICAL RANGES
FISHERY CONTEXT			
Total mortality 2021: Percent retained 2021: Average mortality 2017-21:	37.66 MLBS, 17,084 T 88% 38.48 MLBS, 17,456 T	MORTALITY INCREASED FROM 2020 TO 2021	2021 MORTALITY NEAR 100-YEAR LOW

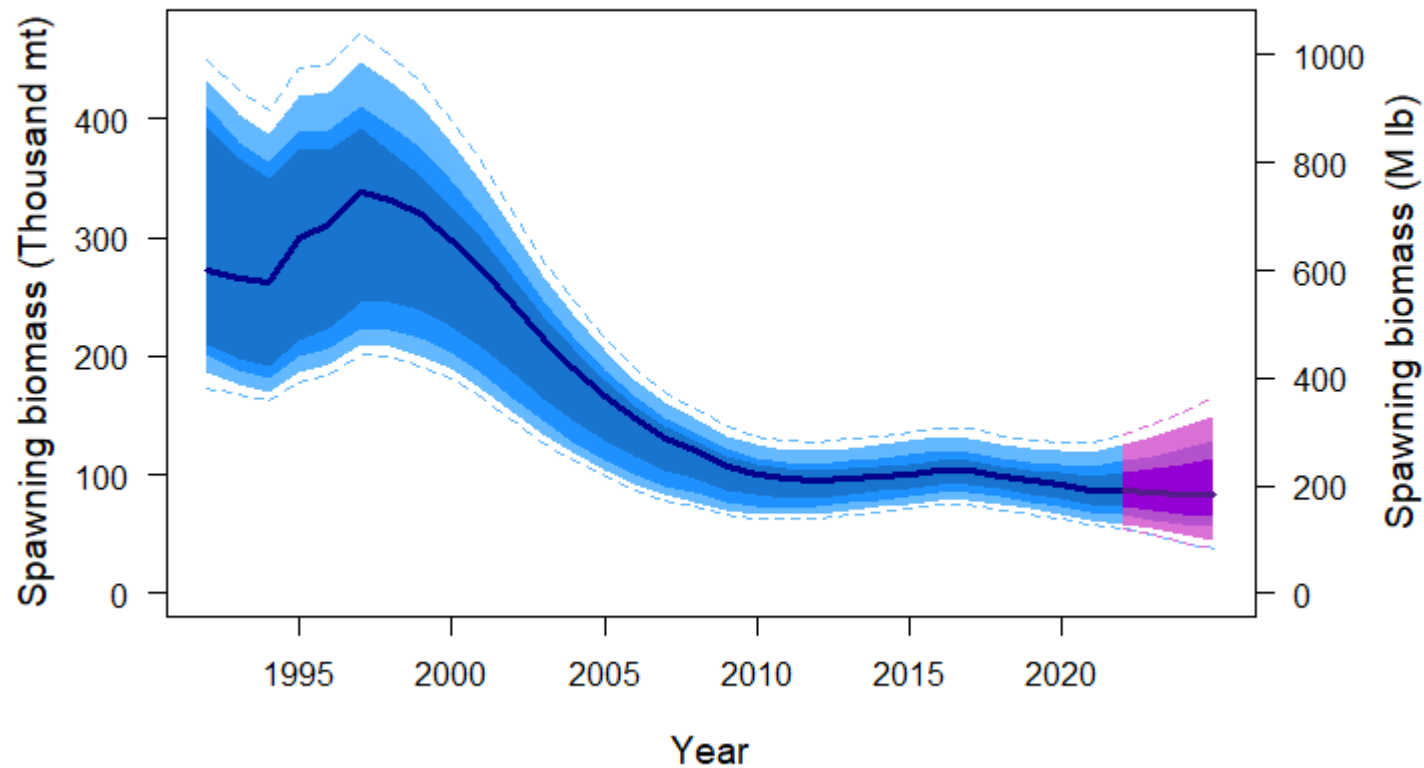


Adopted 2022 mortality limit (41.2 M lb)

- Based on the IPHC's reference level of fishing intensity ($F_{43\%}$)
- Corresponds to projections of:
 - 59% probability of decrease in SB during 2022
 - 25% chance of dropping by 5% or more
 - 44% probability of dropping below $SB_{30\%}$ management trigger by 2023
 - 50% probability of fishery limit decrease in 2023



Projected coastwide stock trend

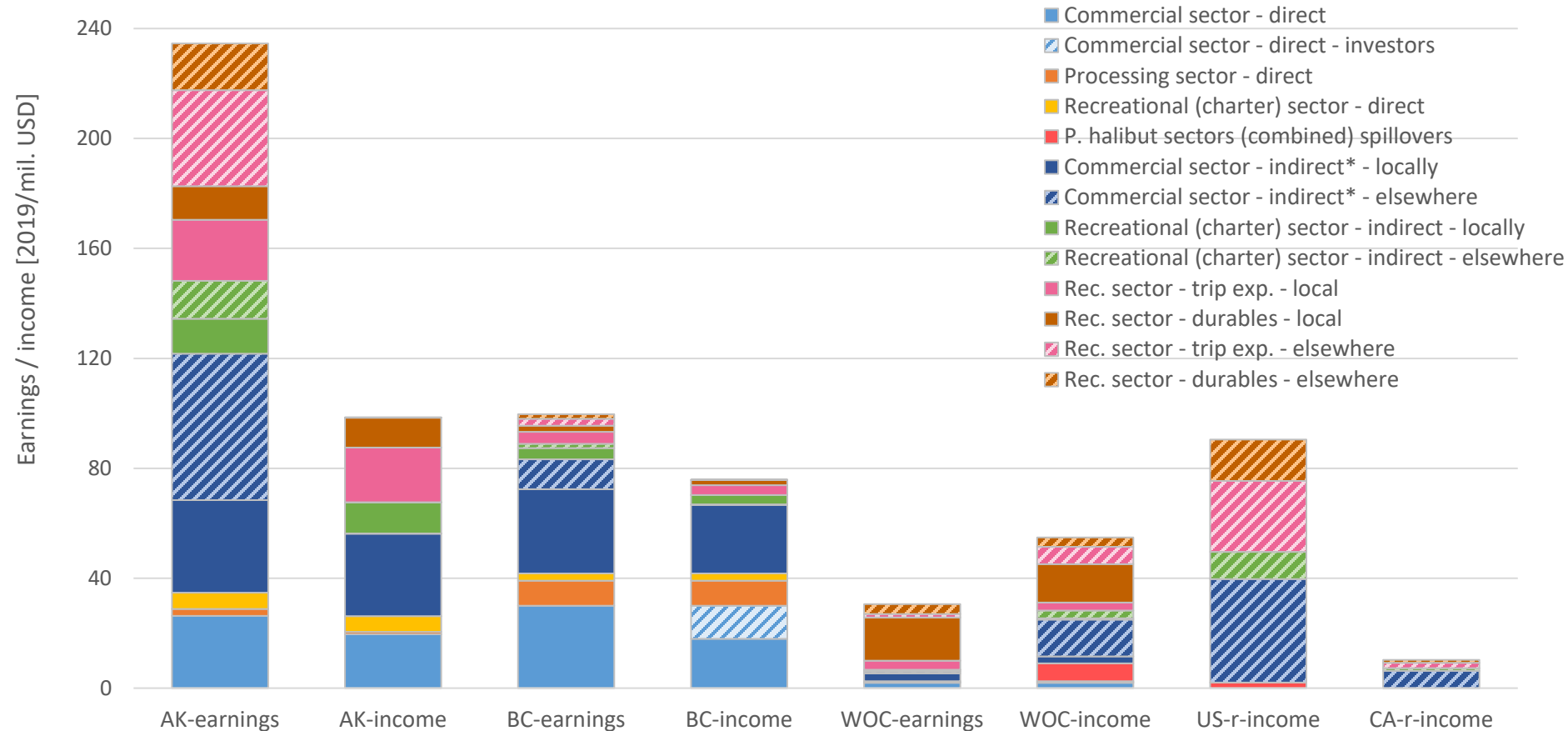


For more data and assessment information

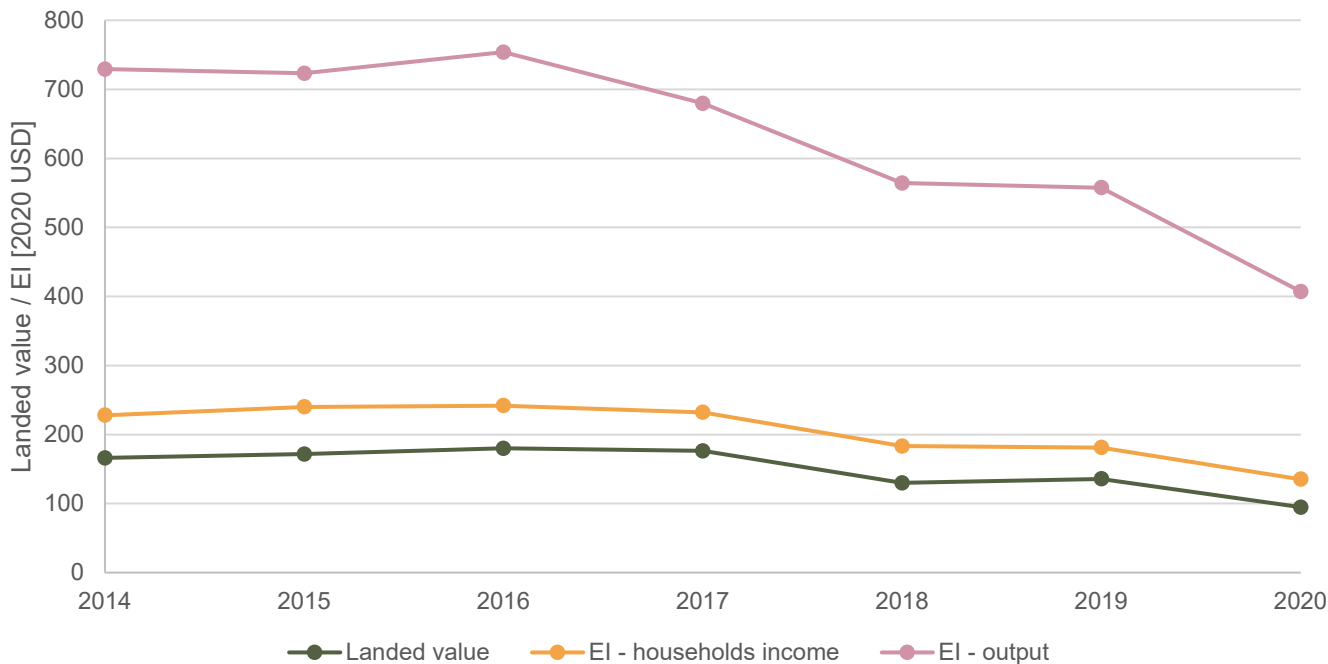
- Summary for AM098: [IPHC-2022-AM098-10](#)
- Assessment and data overview documents are available through the [stock assessment page](#) of the IPHC's website:
 - [IPHC-2022-SA-01](#)
 - [IPHC-2022-SA-02](#)



Economic impact assessment – impact on households



Economic impact assessment – time series



Pacific halibut commercial fishing EI estimates for 2014-2020
in comparison with landed value in mil 2020 USD.



98th Session of the IPHC Annual Meeting (AM098)

- Other decisions:
 - Fishing periods
 - Charter management measures (IPHC Regulatory Areas 2C and 3A)
 - Trap gear use in IPHC Regulatory Area 2B
 - Fishery-independent Setline Survey (FISS)



Fishing Periods

The Commission **ADOPTED** fishing periods for 2022 as provided below, thereby superseding Section 9 of the IPHC Pacific halibut fishery regulations:

- All commercial fishing for Pacific halibut in all IPHC Regulatory Areas may begin no earlier than **6 March** and must cease on **7 December**.
- This implies same fishing periods as in 2021

No change was recommended for IPHC Regulatory Area 2A for 2022

- This aligns with the Pacific Fishery Management Council Recommendations for the 2022 non-Tribal Commercial Directed Halibut Fishery in Area 2A



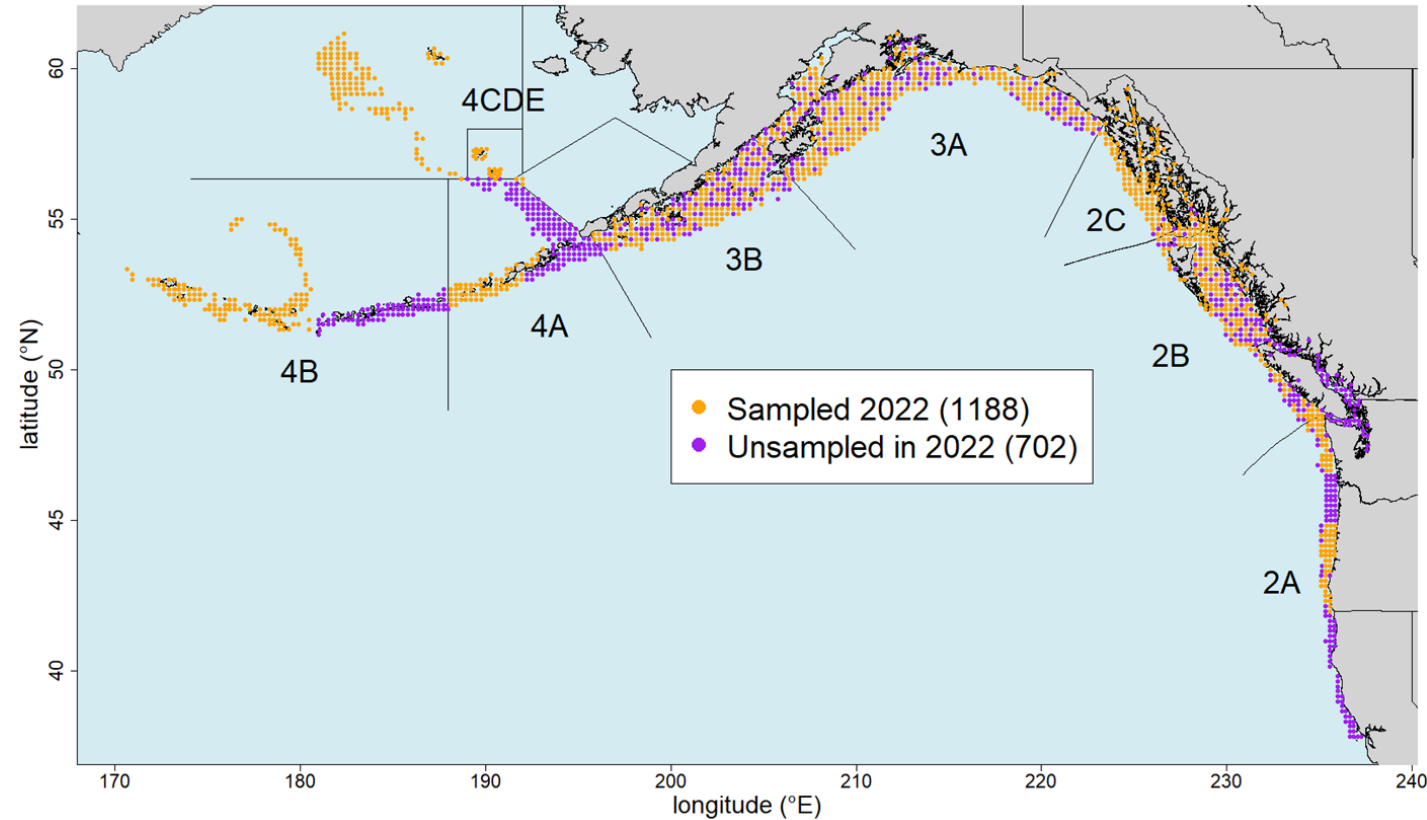
Charter Management Measures

The Commission **ADOPTED** charter management measures for IPHC Regulatory Areas 2C and 3A for 2022:

- IPHC Regulatory Area 2C – one-fish bag limit with size limit of less than or equal to 40 inches or greater than or equal to 80 inches
- IPHC Regulatory Area 3A – two-fish bag limit with one fish of any size and a second fish less than or equal to 28 inches, Wednesdays and two Tuesdays (7/26 and 8/2) closed to retention of Pacific halibut, one trip per vessel, one trip per CHP per day, and no annual limit. See PropB2 for additional detail.
- Recordkeeping requirements for annual limits (See PropB1, not applicable in 2022)



2022 Fishery-Independent Setline Survey (FISS)



The Commission **RECALLED** the IM097 endorsement of the **FISS design for 2022** (map) and provisional endorsement of the designs for 2023 and 2024, and made no further amendments at AM098.



Looking ahead (from AM098)

- The Commission accepted the offer by Canada to host the 99th Session of the IPHC Annual Meeting (AM099) in 2023 in Victoria, BC, Canada from 23 to 27 January 2023.
 - Should the COVID-19 pandemic remain an issue at that time, the meeting may be held electronically.
- 12th Special Session of the IPHC (SS012) (25 February):
 - FY2023 budget adoption
 - Management Strategy Evaluation
 - IPHC Fishery Regulations: Daily bag limit in IPHC Regulatory Area 2B (Sect. 28)

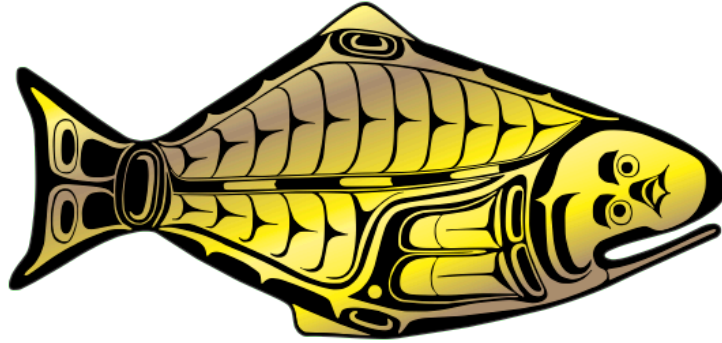


Meeting materials and Report

- 98th Session of the IPHC Annual Meeting (AM098) materials available at:
<https://www.iphc.int/venues/details/98th-session-of-the-iphc-annual-meeting-am098>



INTERNATIONAL PACIFIC



HALIBUT COMMISSION



INTERNATIONAL PACIFIC
HALIBUT COMMISSION

IPHC