



**NOAA
FISHERIES**

Agenda Item E.1.b
Supplemental Science Center Presentation 1
March 2022

Science Center Activities Survey Updates

March 9, 2022

Craig Russell
Northwest Fisheries Science Center



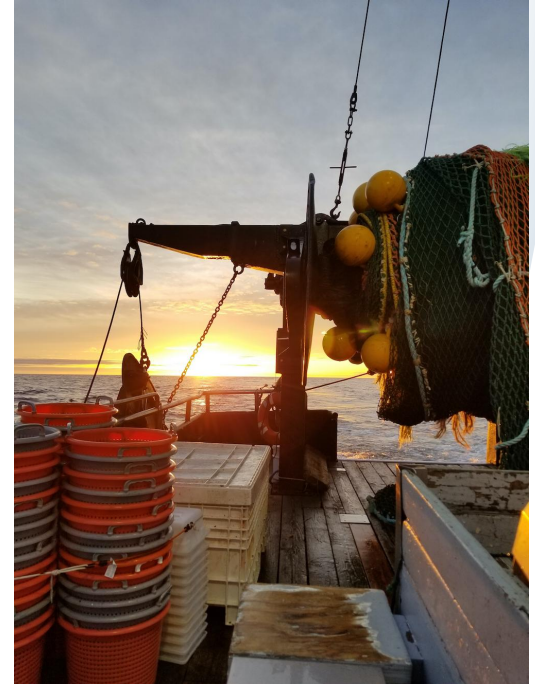
2022 WC Groundfish Bottom Trawl Survey

Cornerstone, long-term time series for 90+ species and California Current Ecosystem.

- 23rd year in time series

Full-four vessel Survey:

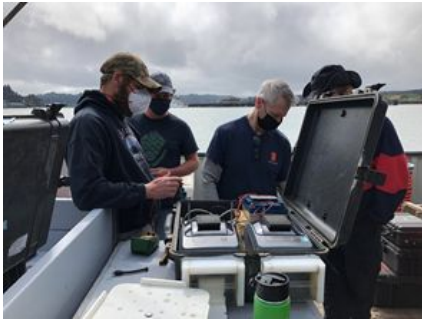
- Two passes, two chartered vessels each, from Cape Flattery to US-Mexico border.



2022 WC Groundfish Bottom Trawl Survey



Leg 1 2021



Mobilization 2021

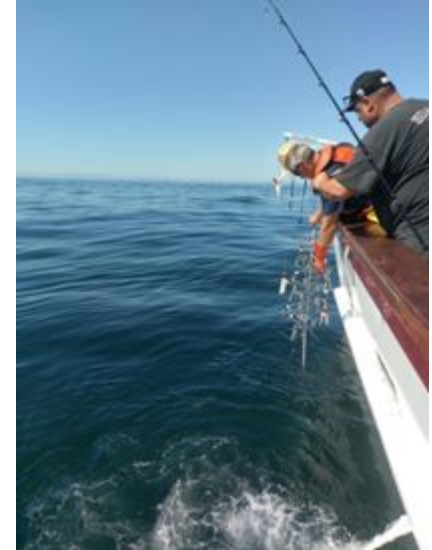
- **Pass 1: May 16 – July 26, 2022**
F/V Ms. Julie, F/V Last Straw (Pass 1)
- **Pass 2; Aug. 22 – Oct 28, 2022**
F/V Excalibur, F/V Noah's Ark (Pass 2)
- 4 Legs (11-12 days each) per Pass
- 752 stations (376 per Pass)
- 188 sea-days

2022 Southern California Rockfish Hook and Line Survey



Cowcod 2021

- Southern CA Bight
- 18th year in time series
- Ongoing partnership: NWFSC, PSMFC, and sportfishing industry
- 3 chartered sportfishing vessels (new contracts in 2022)
- 201 sites (79 in CCAs)
- Sept. 18 – Oct. 7



Rockfish Descender

The California Current Ecosystem Hake Ecology and Survey Methods Research in support of Hake/Whiting Treaty

- **2022 is an off survey year for hake**
 - Research focus
 - NWFSC - 30 days on *Shimada*; DFO - 21 days on *Franklin*, mid-late Summer 2022
- **Main objectives:**
 - Complete an Inter-Vessel Calibration (IVC) between *Shimada* and *Franklin*
 - EK80 research (use new system to understand fish acoustic properties) (*Shimada* and *Franklin*)
 - Hake-mesopelagic interactions (*Franklin*)
 - Hake mix & rockfish/habitat characterization (*Shimada*)



NOAA
FISHERIES

Questions?



NOAA
FISHERIES