

U.S. COAST GUARD PACIFIC COAST – PORT ACCESS ROUTE STUDY

Agenda Item C.2
Supplemental Attachment 4
November 2021

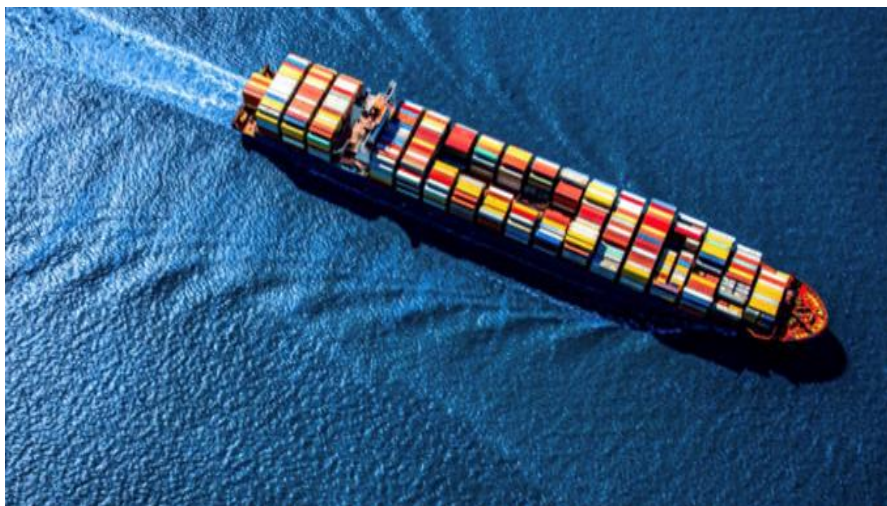
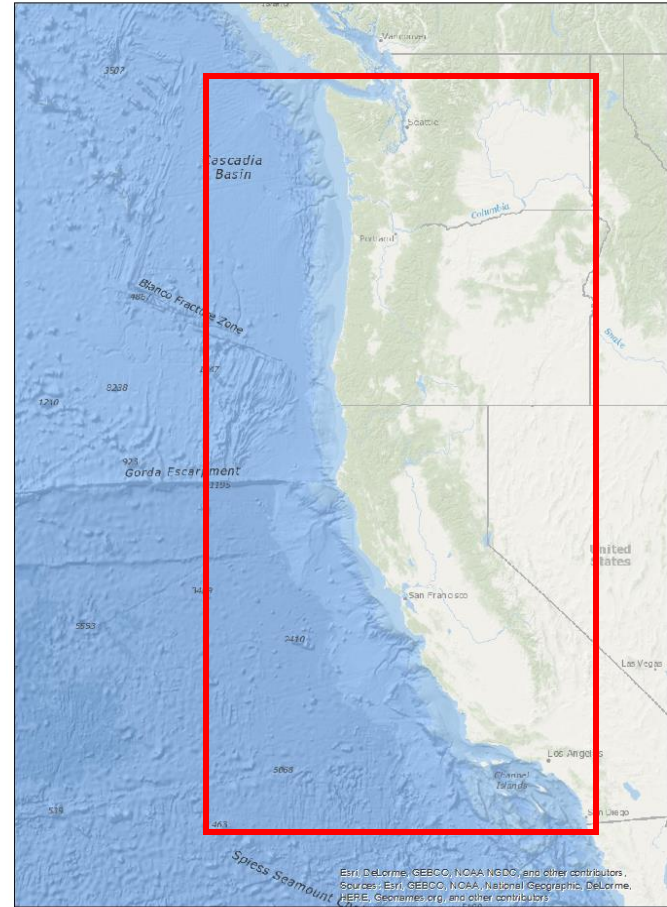
What is the PAC-PARS?

The Pacific Port Access Route Study (PAC-PARS) will be the first comprehensive evaluation of maritime traffic patterns along the Pacific Coast bordering California, Oregon, and Washington.

Vessel traffic, offshore renewable energy, aquafarms, as well as commercial and government space launching activities are some of the maritime related changes occurring along the Pacific Coast.

The U.S. Coast Guard (USCG) is conducting this study to evaluate the usage of coastal waterways, including the navigational conditions for coastal and outer-continental shelf transits.

The study will provide a baseline to assist with future determinations regarding the suitability of waterways for current and future maritime activities and if existing routing measures are adequate.



Access to the study can be found by scanning the QR Code at the bottom of this flyer, or visit:

<https://www.regulations.gov>

And search the docket number:

“USCG-2021-0345”

Questions or concerns can be sent to:

PACPARS@USCG.MIL

Please submit all official comments to the docket above. Comments and related material must be received on or before 25 January, 2022.

