

DRAFT Rebuilding analysis for quillback rockfish (*Sebastes maliger*) in U.S. waters off the coast of California based on the 2021 stock assessment

by  
Brian J. Langseth<sup>1</sup>  
Chantel R. Wetzel<sup>1</sup>

<sup>1</sup>Northwest Fisheries Science Center, U.S. Department of Commerce, National Oceanic and Atmospheric Administration, National Marine Fisheries Service, 2725 Montlake Boulevard East, Seattle, Washington 98112

September 2021

© Pacific Fisheries Management Council, 2021

Correct citation for this publication:

Langseth, B.J., C.R. Wetzel. 2021. DRAFT Rebuilding analysis for quillback rockfish (*Sebastes maliger*) in U.S. waters off the coast of California based on the 2021 stock assessment. Pacific Fisheries Management Council, Portland, Oregon. 38 p.

---

# Contents

<b>Disclaimer</b>	<b>i</b>
<b>Summary</b>	<b>ii</b>
<b>1 Introduction</b>	<b>1</b>
<b>2 Overview of the 2021 stock assessment</b>	<b>1</b>
<b>3 Management performance under rebuilding</b>	<b>2</b>
<b>4 Rebuilding calculations</b>	<b>2</b>
4.1 Definition of Equilibrium Spawning Output . . . . .	2
4.2 Generation of future recruitment . . . . .	3
4.3 Population biology . . . . .	3
4.4 Fishery selectivity, and removal allocations . . . . .	3
4.5 Inclusion of uncertainty . . . . .	3
4.6 Alternate rebuilding strategies analyzed . . . . .	3
<b>5 Results</b>	<b>5</b>
5.1 Rebuilding reference points . . . . .	5
5.2 Alternative harvest policy projections . . . . .	5
5.3 Results for sensitivity on selectivity blocks and form . . . . .	6
<b>6 Acknowledgements</b>	<b>7</b>
<b>7 References</b>	<b>8</b>
<b>8 Tables</b>	<b>9</b>
8.1 Base rebuilding reference points and policy projections . . . . .	9
8.2 Base rebuilding time series . . . . .	11
8.3 Sensitivity rebuilding reference points and policy projections . . . . .	19
<b>9 Figures</b>	<b>21</b>

---

<b>10 Appendix</b>	<b>25</b>
10.1 Appendix A: Rebuilder data file. . . . .	25
10.2 Appendix B: Comparison between the approved stock synthesis base case model and the stock synthesis sensitivity model with dome-shaped selectivity and blocks in 2001. . . . .	26

## **Disclaimer**

These materials do not constitute a formal publication and are for information only. They are in a pre-review, pre-decisional state and should not be formally cited (or reproduced). They are to be considered provisional and do not represent any determination or policy of NOAA or the Department of Commerce.

## Summary

This rebuilding analysis is for the sub-stock of quillback rockfish (*Sebastes maliger*) in waters off California. The analysis is based on the 2021 stock assessment (Langseth et al. 2021). The 2021 assessment model estimated the quillback rockfish population to be at 14% of the unexploited equilibrium spawning output at the beginning of 2021. This rebuilding analysis compares the results of applying a suite of potential management actions to the stock for 2023 and beyond.

The results of the analysis show that the value for  $T_{\text{MIN}}$ , the median year for rebuilding to the target level in the absence of fishing since the year of declaration (2023), is 2040. The estimated generation time for quillback rockfish was estimated to be 26 years. In conjunction with  $T_{\text{MIN}}$  and the mean generation time,  $T_{\text{MAX}}$  was estimated to be 2066. An  $\text{SPR} = 0.581$  harvest rate generates a 50% probability of recovery by  $T_{\text{MID}}$  where  $T_{\text{MID}}$  was 2053, an intermediate year between  $T_{\text{MIN}}$  and  $T_{\text{MAX}}$ .

# 1 Introduction

The 2021 assessment of quillback rockfish (*Sebastes maliger*) in California waters documented that the population of quillback rockfish was below the Minimum Stock Size Threshold (MSST), which is 25% of unfished spawning output for rockfish stocks, in 2021 (Langseth et al. 2021). The population declined below MSST starting in 1992, reached its lowest values in the mid-1990s but increased to near the MSST in the 2000s and early 2010s, and declined in recent years. The stock is expected to be declared overfished for 2023 in 2021. Given the assumed productivity of the stock combined with the longevity of quillback rockfish a range of alternative rebuilding approaches were examined, and are described in this report, with rebuilding ranging from 2040 - 2065 based on various SPR harvest rates from 0.5 to 1 (no harvest).

## 2 Overview of the 2021 stock assessment

The 2021 assessment of quillback rockfish assessed the stock as three separate sub-stocks along the U.S. west coast: Washington, Oregon, and California. These were the first assessments of quillback rockfish conducted within Stock Synthesis (Methot and Wetzel 2013) that used catch and length composition data to inform model estimates around stock size and status. The previous assessment of quillback rockfish conducted in 2010 was a coastwide assessment modeled using Depletion-Based Stock Reduction Analysis (DB-SRA) to provide estimates of coastwide OFLs using catch data and biological information (Dick and MacCall 2010). DB-SRA is a catch-only model and does not assess overfished status; the 2010 assessment assumed that current depletion was distributed around the management target of 40%. The 2010 assessment found there was a 52% chance that quillback rockfish was experiencing overfishing, as recent coastwide catch of quillback rockfish slightly exceeded the median coastwide OFL estimate at the time. Recent catches of quillback rockfish for the current assessment also exceed the ACL contributions for the species in all modeled areas.

Estimates of depletion in 2021 for the sub-stocks off Washington and Oregon were above the MSST threshold, but the estimate of depletion for the sub-stock off California was 14%. See (Langseth et al. 2021) for additional results from the California quillback rockfish base model.

California quillback rockfish was assessed using a one-sex model with coastwide life history parameters combined across sexes. Life history parameters were estimated externally and then fixed within the model. Natural mortality and steepness were both fixed, at the median and mean of the priors, respectively. Annual recruitment deviations were estimated within the base model. The model for quillback rockfish in California waters included two fishing fleets, a commercial and a recreational fleet. The majority of the removals and length composition data arose from the recreational fleet. Recreational removals peaked in the late 1970s and early 1980s, with two years of large catches in 1984 and 1993. Removals declined sharply in 1994, but increased to levels similar to the late 1970s and early 1980s in the mid 2000s

and again in recent years. Commercial removals peaked in the mid to late 1990s, with one year of exceptionally large catches in 1991. Removals declined through the mid 2010s, but increased in recent years. Selectivity for the commercial and recreational fleets was specified to be asymptotic. The assessment model decision table explored uncertainty around stock size and status using lower ( $M = 0.0464$ ) and higher ( $M = 0.0744$ ) natural mortality ( $M$ ) values relative to the base model.

Sensitivities to modeling choices, catch history, and parameter values were explored and showed general support for the base model estimates of stock status and depletion. Sensitivities to the von Bertalanffy growth coefficient ( $k$ , whether estimated on its own or along with  $L_\infty$ ) and natural mortality showed that model estimates of depletion were sensitive to these parameter choices.

### 3 Management performance under rebuilding

This is the first rebuilding plan for quillback rockfish in waters off the coast of California.

### 4 Rebuilding calculations

This rebuilding analysis was conducted in September, 2021 using software developed by A. Punt (version 3.12h, August 2021). The input file for the analysis is provided in Appendix A. The steps followed were:

1. Define how equilibrium spawning output ( $SB_0$ ) will be calculated.
2. Define how future recruitment will be generated.
3. Define the biological information on which future projections will be based.
4. Define the fishery selectivity and allocation to be applied during rebuilding.
5. Decide how to include uncertainty in input parameters from the stock assessment in the rebuilding analysis.
6. Identification and analysis of alternative harvest strategies for rebuilding.

#### 4.1 Definition of Equilibrium Spawning Output

The equilibrium spawning output ( $SB_0$ ) used in this rebuilding analysis is calculated via the stock-recruitment, growth, maturity, and fecundity relationships from the 2021 assessment in order to be consistent with assessment model results. Equilibrium spawning output was estimated to be 55.08 millions of eggs in the assessment model, which dictates a rebuilding relative spawning output target ( $SB_{40\%}$ ) of 22.035 millions of eggs (Table 1). Estimates of spawning output presented in this report are female spawning output only.



## 4.2 Generation of future recruitment

The estimated parameters of the stock recruitment relationship including the unexploited equilibrium recruitment (natural log of  $R_0 = 3.168$ ), steepness ( $h = 0.72$ ), and degree of recruitment variability ( $\sigma_R = 0.60$ ) from the 2021 assessment were used to generate future recruitments in the rebuilding analysis.

## 4.3 Population biology

The biological parameters used for the rebuilding analysis were based on the values from the 2021 assessment. Biological parameters in the assessment were aggregated across sex and constant across time. The rebuilding analysis was based on a single sex model.

## 4.4 Fishery selectivity, and removal allocations

The selectivity used in the rebuilding analysis was obtained from the 2021 assessment. Selectivity in the assessment model was constant across time for each fishing fleet. The relative allocation of catch among fleets in the rebuilding analysis was informed using the relative fishing mortality from the assessment averaged over recent years (2017-2019). This choice provides some consistency between recent model results and forecasts from the rebuilding analysis, accounting for the unique dynamics in 2020 caused by the COVID-19 pandemic.

## 4.5 Inclusion of uncertainty

Model and parameter uncertainty is included in the rebuilding analysis via 1,000 random simulations of stochastic future recruitment strengths and integration over alternative low ( $M = 0.0464$ ) and high ( $M = 0.0744$ ) states of nature for values of natural mortality ( $M$ ). Other potential states of nature were explored for the assessment, including for low and high  $\ln(R_0)$  and high and low  $L_\infty$ , but alternative values of natural mortality encapsulated a slightly wider range of depletion estimates compared to the other states of natures. The base model was given 50% of the weight (500 simulations) and each alternative natural mortality state of nature was given 25% (250 simulations) of the weight.

## 4.6 Alternate rebuilding strategies analyzed

Assuming that a constant rate of harvest will be applied throughout a rebuilding period, the basis for rebuilding alternatives can be divided into two approaches: 1) strategies based on selection of a constant harvest rate (SPR rate), or 2) strategies based on selection of a  $T_{\text{TARGET}}$  (year for 50% probability of recovery). This rebuilding analysis presents the

following alternate strategies, which are a combination of those specified in the rebuilding Terms of Reference (TOR) and additional strategies. The additional strategies are based on the selection of a SPR harvest rate or rebuilding by a selected target year.

1. Eliminate all harvest,  $F = 0$ , beginning in the next management cycle, 2023, the same as setting a constant SPR harvest rate of 1.0.
2. Apply the harvest rate that would generate the ACL contributions specified for the current year (i.e., the latest year specified in regulations).
3. Apply a range of SPR values:
  - (a)  $SPR = 0.50$ ,
  - (b)  $SPR = 0.60$ ,
  - (c)  $SPR = 0.70$ ,
  - (d)  $SPR = 0.80$ , and
  - (e)  $SPR = 0.90$ .
4. Apply SPR harvest rates that are estimated to lead to a 50% probability of recovery by alternative target years:
  - (a) by  $T_{MAX}$  from the current cycle, and
  - (b) by  $T_{MID}$  from the current cycle, which is the year midway between  $T_{MIN}$  and  $T_{MAX}$ .
5. Apply the default harvest policy based on the 40:10 harvest control rule with time-varying category 2  $\sigma = 1.0$  and  $P^* = 0.45$ .
6. Apply the ABC harvest rate with time-varying category 2  $\sigma = 1.0$  and  $P^* = 0.45$ .

The sum of ACL contributions for quillback rockfish from the southern management area and the percent allocation for California (28.7%) in the northern management area as provided by the Groundfish Management Team (GMT) were larger than the catch resulting from applying an SPR of 0.5, implying an SPR rate of below 0.5 for this run, so results from this run are not provided in this report. Similarly, the SPR rate that led to a 50% probability of recovery by  $T_{MAX}$  was less than 0.5 so results from the  $T_{MAX}$  strategy are not presented in this report.

No current rebuilding plan exists for quillback rockfish in California waters so the alternatives related to the results of a previous rebuilding plan as specified in the rebuilding TOR could not be done. These include:

- Apply the spawning potential ratio or relevant harvest control run in the current rebuilding plan.

- Apply the harvest rate that is estimated to lead to a 50% probability of recovery by the current  $T_{\text{TARGET}}$ .
- Apply the harvest rate that is estimated to lead to a 50% probability of recovery by the  $T_{\text{MAX}}$  from the previous cycle.

All of the above rebuilding strategies were conducted assuming removals of 13.5 mt in 2021 and 2022 as recommended by the GMT.

The Pacific Fishery Management Council’s (Council) Scientific and Statistical Committee (SSC) requested at the September Council meeting that an additional rebuilding sensitivity be done examining the impact of blocking both recreational and commercial selectivity at 1916-2000 and 2001-2020, assuming asymptotic selectivity for the early blocks and allowing estimation of dome-shaped selectivity for the recent blocks. This sensitivity was conducted without integration over alternative states of nature for natural mortality, given its treatment as a sensitivity.

## 5 Results

### 5.1 Rebuilding reference points

Reference points calculated based on this rebuilding analysis are given in Table 1. The minimum time required for rebuilding,  $T_{\text{MIN}}$ , with no fishing ( $F=0$ ) starting in 2023 was estimated to be 17 years, corresponding to the stock being rebuilt by 2040, assuming the default removals for 2021 and 2022. The mean generation time was estimated to be 26 years. The maximum time allowed for rebuilding,  $T_{\text{MAX}}$ , is defined as the  $T_{\text{MIN}}$  plus the mean generation time for stocks that require more than 10 years to rebuild. Quillback rockfish was unable to rebuild within 10 years so the estimated  $T_{\text{MAX}}$  was 2066.  $T_{\text{TARGET}}$ , and  $\text{SPR}_{\text{TARGET}}$  are not specified since this is the first rebuilding plan for quillback rockfish and these values have not been set via the Council’s process.

A rebuilding strategy is presented below and includes a rebuilding target year termed  $T_{\text{MID}}$ , which equals 2053 and is the mid-point between  $T_{\text{MIN}}$  and  $T_{\text{MAX}}$ . The Council may opt to select a  $T_{\text{TARGET}}$  earlier or later than this  $T_{\text{MID}}$  value based on fishery, economic, or other factors.

### 5.2 Alternative harvest policy projections

Summary results from the rebuilding alternatives are presented in Table 2. Detailed results are presented in Tables 3-6 and Figures 1-4.

The target rebuilding year based on the various rebuilding strategies ranged from 2040 - 2065 (Table 2). The probability of rebuilding by year steadily increased across the alternative SPR values with full rebuilding (reaching a probability of greater than 50%) by 2065 when the lowest SPR of 0.50 was applied (Table 3 and Figure 1). The recommended removals in 2023, the first year of rebuilding, were low ranging between 0.04 - 2.05 mt across strategies excluding the no-harvest strategy (Table 4), with the recommended removals slowly increasing by year during the rebuilding period (Figure 2). The estimated Overfishing Limits (OFLs) for each rebuilding alternative are given in Table 5. The change in spawning output by year relative to the spawning output target, 40% of unfished, under each of the alternatives are shown by year in Table 6 and Figure 3. The harvest rate to obtain a 50% probability of recovery by  $T_{MAX}$  corresponds to an SPR that is lower than 0.5, so is not provided in the tables.

### 5.3 Results for sensitivity on selectivity blocks and form

Reference points and summary results for the sensitivity rebuilding analysis that was based on a model with selectivity blocks for both the recreational and commercial fleets applied in 2001 with dome-shaped selectivity in the recent blocks are shown in Tables 7 and 8.  $T_{MIN}$  was one year earlier than the base rebuilding analysis, but because mean generation time was one year earlier (due to not applying uncertainty from the natural mortality states of nature),  $T_{MAX}$  was the same as the base rebuilding analysis. Time to targets across the various rebuilding strategies occurred one to three years earlier than the base rebuilding model. Recommended removals in 2023 were also larger than the base, ranging between 0.3 - 2.45 mt, given the slightly higher spawning output and SPR in 2021 compared to the base model.

Comparisons between stock synthesis output from the adopted base model and the sensitivity run are provided in Appendix B. The sensitivity had slightly higher estimates of unfished spawning output (Figure 5) and similar depletion estimates (Figure 6) compared to the adopted base model. Selectivity in the recent block was domed at large sizes for both the recreational and commercial fleets, and right shifted in recent years for the commercial fleet (Figure 7) so the time series of information entered into the sensitivity rebuilding analysis were different from the time series entered into the base rebuilding analysis, contributing to differences in results.

We do not consider the sensitivity model to be an improvement over the base model. The shifts in the selectivity curve for the commercial fleet in the sensitivity model fit the lower observed commercial mean lengths in the 1990s and the higher observed commercial mean lengths starting around 2010 better than the base model (Figures 8 and 9), leading to an improvement in AIC (Table 9). However, the change in estimated commercial mean length in 2001 for the sensitivity model does not align with a shift in the commercial mean length data at that time. Furthermore, the mode and right side of the estimated aggregate length distribution from the commercial fleet are shifted right, and overestimate the proportion of larger fish on aggregate compared to the base model (Figures 12 and 13). Combined with

the similarities in estimates of population scale and status, the base model is preferred due to parsimony.

## **6 Acknowledgements**

Andre Punt (University of Washington) updated the rebuilder program to apply time-varying  $\sigma$  for the Acceptable Biological Catch and 40-10 scenarios. Andre Punt and Owen Hamel (NOAA) provided assistance in understanding and applying the rebuilder program. Owen Hamel provided comments on early drafts of the analysis.

## 7 References

- Dick, E. J., and Alec D. MacCall. 2010. “Estimates of Sustainable Yield for 50 Data-Poor Stocks in the Pacific Coast Groundfish Fishery Management Plan.” NOAA-TM-NMFS-SWFSC-460. NOAA Tech. Memo.
- Langseth, Brian J., Chantel R. Wetzel, Jason M. Cope, and John E. Budrick. 2021. “Status of Quillback Rockfish (*Sebastes Maliger*) in U.S. Waters Off the Coast of California in 2021 Using Catch and Length Data.” 7700 Ambassador Place NE, Suite 200, Portland, OR 97220: Pacific Fishery Management Council.
- Methot, R. D., and C. R. Wetzel. 2013. “Stock Synthesis: A Biological and Statistical Framework for Fish Stock Assessment and Fishery Management.” *Fisheries Research* 142 (May): 86–99. <https://doi.org/10.1016/j.fishres.2012.10.012>.

## 8 Tables

### 8.1 Base rebuilding reference points and policy projections

**Table 1:** Summary of the base rebuilding reference points.

Quantity	2021 Assessment Values
SB0 (millions of eggs)	55.08
SB40 (millions of eggs)	22.035
SB2021 (millions of eggs)	7.745
Year rebuilding begins	2023
Current year	2021
Tmin	2040
Mean generation time (years)	26
Tmax	2066
TF=0	2040
Ttarget	TBD
SPRtarget	TBD
Current SPR (2021)	0.1165

**Table 2:** Results of base rebuilding alternatives based on alternative SPR targets for 50 percent probability of recovery based on the assumed removals for 2021-22. SPR for the ABC and 40-10 strategies is provided as a dash (-) because these strategies do not have a constant SPR value

	SPR= .500	SPR= .600	SPR= .700	SPR= .800	SPR= .900	Yr=Tmid F=0	40-10 rule	ABC Rule
2021 Assumed Removals (mt)	13.5	13.5	13.5	13.5	13.5	13.5	13.5	13.5
2022 Assumed Removals (mt)	13.5	13.5	13.5	13.5	13.5	13.5	13.5	13.5
2023 ACL (mt)	2.05	1.42	0.94	0.56	0.25	1.52	0	1.79
2024 ACL (mt)	2.24	1.57	1.05	0.63	0.29	1.68	0	1.95
SPR	0.5	0.6	0.7	0.8	0.9	0.581	1	-
Ttarget	2065	2051	2046	2043	2042	2053	2040	2055
Tmax	2066	2066	2066	2066	2066	2066	2066	2066
Probability of recovery by Tmax	0.525	0.897	0.979	0.999	1	0.852	1	0.821



## 8.2 Base rebuilding time series

**Table 3:** Probability of recovery by year for base rebuilding strategies

Year	SPR= .500	SPR= .600	SPR= .700	SPR= .800	SPR= .900	Yr=Tmid F=0	40-10 rule	ABC Rule
2021	0.000	0.000	0.000	0.000	0.000	0.000	0.000	0.000
2022	0.000	0.000	0.000	0.000	0.000	0.000	0.000	0.000
2023	0.000	0.000	0.000	0.000	0.000	0.000	0.000	0.000
2024	0.000	0.000	0.000	0.000	0.000	0.000	0.000	0.000
2025	0.000	0.000	0.000	0.000	0.000	0.000	0.000	0.000
2026	0.000	0.000	0.000	0.000	0.000	0.000	0.000	0.000
2027	0.000	0.000	0.000	0.000	0.000	0.000	0.000	0.000
2028	0.000	0.000	0.000	0.000	0.000	0.000	0.000	0.000
2029	0.000	0.000	0.001	0.001	0.001	0.000	0.003	0.000
2030	0.000	0.001	0.003	0.006	0.009	0.001	0.016	0.001
2031	0.001	0.003	0.008	0.018	0.037	0.003	0.075	0.001
2032	0.001	0.007	0.018	0.046	0.099	0.005	0.147	0.003
2033	0.003	0.014	0.046	0.098	0.160	0.012	0.215	0.009
2034	0.007	0.031	0.075	0.146	0.204	0.027	0.231	0.017
2035	0.013	0.050	0.108	0.184	0.230	0.042	0.255	0.033
2036	0.022	0.061	0.144	0.214	0.248	0.049	0.274	0.041
2037	0.026	0.084	0.168	0.234	0.279	0.065	0.316	0.053
2038	0.031	0.097	0.187	0.263	0.321	0.083	0.376	0.065
2039	0.034	0.121	0.226	0.314	0.377	0.101	0.431	0.078
2040	0.043	0.141	0.274	0.357	0.422	0.118	0.510	0.095
2041	0.054	0.173	0.306	0.403	0.490	0.143	0.586	0.111
2042	0.067	0.201	0.352	0.446	0.557	0.170	0.648	0.140
2043	0.078	0.237	0.388	0.502	0.620	0.197	0.695	0.157
2044	0.093	0.272	0.426	0.562	0.662	0.230	0.740	0.191
2045	0.105	0.311	0.461	0.605	0.709	0.263	0.758	0.220
2046	0.121	0.342	0.508	0.647	0.746	0.304	0.788	0.256
2047	0.138	0.368	0.550	0.688	0.773	0.337	0.821	0.292
2048	0.150	0.398	0.597	0.731	0.805	0.363	0.853	0.319
2049	0.165	0.437	0.626	0.764	0.834	0.387	0.886	0.346
2050	0.189	0.472	0.658	0.800	0.868	0.417	0.914	0.375
2051	0.211	0.500	0.707	0.830	0.898	0.448	0.932	0.408
2052	0.228	0.528	0.743	0.858	0.918	0.478	0.950	0.436
2053	0.242	0.551	0.777	0.883	0.934	0.500	0.972	0.465
2054	0.272	0.591	0.805	0.902	0.951	0.525	0.978	0.490
2055	0.293	0.631	0.832	0.918	0.970	0.557	0.987	0.509
2056	0.311	0.661	0.858	0.937	0.976	0.601	0.991	0.541
2057	0.331	0.690	0.878	0.952	0.983	0.638	0.997	0.586
2058	0.353	0.719	0.896	0.962	0.991	0.660	0.999	0.616

**Table 3:** Probability of recovery by year for base rebuilding strategies (*continued*)

Year	SPR= .500	SPR= .600	SPR= .700	SPR= .800	SPR= .900	Yr=Tmid F=0	40-10 rule	ABC Rule
2059	0.378	0.745	0.917	0.970	0.996	0.690	1.000	0.638
2060	0.399	0.766	0.931	0.979	0.996	0.711	1.000	0.670
2061	0.419	0.793	0.944	0.983	0.998	0.741	1.000	0.701
2062	0.446	0.819	0.952	0.992	0.998	0.767	1.000	0.721
2063	0.467	0.848	0.960	0.996	0.999	0.797	1.000	0.748
2064	0.492	0.866	0.964	0.998	0.999	0.827	1.000	0.774
2065	0.504	0.880	0.969	0.998	0.999	0.841	1.000	0.808
2066	0.525	0.897	0.979	0.999	1.000	0.852	1.000	0.821

**Table 4:** Catches (mt) by year for base rebuilding strategies

Year	SPR= .500	SPR= .600	SPR= .700	SPR= .800	SPR= .900	Yr=Tmid F=0	40-10 rule	ABC Rule
2021	13.50	13.50	13.50	13.50	13.50	13.50	13.5	13.50
2022	13.50	13.50	13.50	13.50	13.50	13.50	13.5	13.50
2023	2.05	1.42	0.94	0.56	0.25	1.52	0.0	1.79
2024	2.24	1.57	1.05	0.63	0.29	1.68	0.0	1.95
2025	2.46	1.74	1.17	0.71	0.32	1.86	0.0	2.13
2026	2.68	1.91	1.29	0.79	0.36	2.04	0.0	2.30
2027	2.89	2.08	1.42	0.87	0.40	2.22	0.0	2.47
2028	3.08	2.24	1.53	0.94	0.44	2.39	0.0	2.63
2029	3.26	2.39	1.65	1.02	0.47	2.54	0.0	2.77
2030	3.45	2.54	1.76	1.09	0.51	2.70	0.0	2.91
2031	3.61	2.68	1.88	1.17	0.55	2.85	0.0	3.03
2032	3.79	2.84	1.99	1.25	0.59	3.01	0.0	3.17
2033	3.95	2.97	2.10	1.32	0.62	3.15	0.0	3.29
2034	4.13	3.12	2.21	1.40	0.66	3.31	0.0	3.42
2035	4.29	3.27	2.33	1.48	0.70	3.46	0.0	3.54
2036	4.47	3.42	2.44	1.55	0.74	3.61	0.0	3.69
2037	4.63	3.56	2.56	1.63	0.78	3.76	0.0	3.84
2038	4.77	3.69	2.66	1.70	0.82	3.90	0.0	3.97
2039	4.91	3.81	2.76	1.78	0.85	4.02	0.0	4.10
2040	5.04	3.94	2.86	1.85	0.89	4.15	0.0	4.23
2041	5.17	4.06	2.96	1.91	0.92	4.28	0.0	4.36
2042	5.33	4.20	3.08	1.99	0.96	4.42	0.0	4.51
2043	5.44	4.32	3.17	2.06	1.00	4.54	0.0	4.63
2044	5.60	4.45	3.27	2.13	1.04	4.68	0.0	4.77
2045	5.72	4.56	3.37	2.20	1.07	4.79	0.0	4.88
2046	5.87	4.70	3.49	2.28	1.11	4.93	0.0	5.03
2047	6.00	4.83	3.58	2.34	1.14	5.07	0.0	5.17
2048	6.11	4.93	3.67	2.41	1.18	5.17	0.0	5.27
2049	6.22	5.04	3.77	2.47	1.21	5.28	0.0	5.39
2050	6.31	5.12	3.84	2.53	1.24	5.37	0.0	5.48
2051	6.38	5.20	3.91	2.58	1.27	5.44	0.0	5.55
2052	6.49	5.29	3.98	2.63	1.30	5.55	0.0	5.66
2053	6.58	5.40	4.06	2.69	1.33	5.64	0.0	5.75
2054	6.65	5.45	4.12	2.74	1.36	5.70	0.0	5.81
2055	6.71	5.51	4.17	2.78	1.38	5.75	0.0	5.88
2056	6.81	5.59	4.24	2.82	1.40	5.84	0.0	5.96
2057	6.88	5.66	4.30	2.87	1.43	5.91	0.0	6.04
2058	6.98	5.75	4.37	2.91	1.45	6.00	0.0	6.13
2059	7.04	5.82	4.43	2.97	1.47	6.07	0.0	6.19
2060	7.12	5.90	4.49	3.01	1.50	6.15	0.0	6.28

**Table 4:** Catches (mt) by year for base rebuilding strategies (*continued*)

Year	SPR= .500	SPR= .600	SPR= .700	SPR= .800	SPR= .900	Yr=Tmid F=0		40-10 rule	ABC Rule
2061	7.15	5.93	4.53	3.05	1.52	6.18	0.0	6.53	6.31
2062	7.19	5.96	4.57	3.07	1.54	6.23	0.0	6.57	6.36
2063	7.25	6.03	4.62	3.11	1.56	6.28	0.0	6.62	6.41
2064	7.28	6.07	4.66	3.14	1.57	6.31	0.0	6.64	6.45
2065	7.35	6.12	4.70	3.17	1.59	6.38	0.0	6.69	6.51
2066	7.37	6.17	4.74	3.19	1.61	6.42	0.0	6.72	6.56

**Table 5:** OFLs (mt) by year for base rebuilding strategies

Year	SPR= .500	SPR= .600	SPR= .700	SPR= .800	SPR= .900	Yr=Tmid F=0	40-10 rule	ABC Rule
2021	13.50	2.37	2.37	2.37	2.37	2.37	2.37	2.37
2022	13.50	2.07	2.07	2.07	2.07	2.07	2.07	2.07
2023	2.05	2.05	2.05	2.05	2.05	2.05	2.05	2.05
2024	2.24	2.27	2.29	2.30	2.31	2.27	2.32	2.25
2025	2.46	2.51	2.56	2.58	2.61	2.50	2.63	2.49
2026	2.68	2.76	2.83	2.87	2.92	2.74	2.96	2.71
2027	2.89	3.01	3.09	3.17	3.23	2.98	3.28	2.94
2028	3.08	3.23	3.35	3.45	3.53	3.21	3.60	3.16
2029	3.26	3.45	3.60	3.72	3.81	3.41	3.91	3.35
2030	3.45	3.67	3.85	4.00	4.13	3.63	4.23	3.56
2031	3.61	3.88	4.10	4.27	4.42	3.83	4.56	3.74
2032	3.79	4.10	4.35	4.55	4.72	4.05	4.88	3.95
2033	3.95	4.29	4.58	4.82	5.02	4.24	5.19	4.14
2034	4.13	4.51	4.84	5.10	5.33	4.44	5.53	4.34
2035	4.29	4.73	5.09	5.40	5.67	4.65	5.88	4.54
2036	4.47	4.94	5.33	5.67	5.95	4.85	6.21	4.74
2037	4.63	5.14	5.58	5.95	6.27	5.05	6.56	4.94
2038	4.77	5.33	5.81	6.22	6.58	5.23	6.90	5.10
2039	4.91	5.50	6.03	6.49	6.88	5.40	7.22	5.27
2040	5.04	5.69	6.25	6.75	7.19	5.58	7.56	5.44
2041	5.17	5.86	6.47	6.99	7.46	5.75	7.85	5.60
2042	5.33	6.07	6.71	7.28	7.76	5.93	8.20	5.80
2043	5.44	6.25	6.93	7.53	8.06	6.09	8.53	5.95
2044	5.60	6.43	7.15	7.79	8.37	6.27	8.87	6.13
2045	5.72	6.59	7.35	8.02	8.62	6.43	9.16	6.27
2046	5.87	6.79	7.61	8.32	8.93	6.62	9.49	6.47
2047	6.00	6.98	7.81	8.56	9.22	6.80	9.82	6.65
2048	6.11	7.12	8.01	8.82	9.51	6.93	10.15	6.77
2049	6.22	7.29	8.23	9.04	9.77	7.10	10.45	6.93
2050	6.31	7.40	8.38	9.24	10.01	7.20	10.73	7.04
2051	6.38	7.51	8.53	9.43	10.24	7.30	10.99	7.13
2052	6.49	7.65	8.68	9.61	10.46	7.44	11.22	7.28
2053	6.58	7.80	8.86	9.83	10.69	7.57	11.50	7.39
2054	6.65	7.88	9.00	10.00	10.91	7.65	11.75	7.47
2055	6.71	7.96	9.10	10.17	11.16	7.72	12.02	7.56
2056	6.81	8.08	9.25	10.31	11.29	7.84	12.21	7.66
2057	6.88	8.17	9.38	10.49	11.50	7.93	12.44	7.76
2058	6.98	8.30	9.54	10.63	11.66	8.06	12.63	7.88
2059	7.04	8.41	9.68	10.84	11.89	8.15	12.87	7.96
2060	7.12	8.52	9.81	11.00	12.08	8.26	13.10	8.07

**Table 5:** OFLs (mt) by year for base rebuilding strategies (*continued*)

Year	SPR= .500	SPR= .600	SPR= .700	SPR= .800	SPR= .900	Yr=Tmid F=0	40-10 rule	ABC Rule
2061	7.15	8.56	9.90	11.13	12.26	8.29	13.29	8.39
2062	7.19	8.61	9.97	11.23	12.39	8.37	13.46	8.44
2063	7.25	8.70	10.08	11.35	12.52	8.42	13.62	8.51
2064	7.28	8.77	10.15	11.47	12.69	8.48	13.80	8.53
2065	7.35	8.84	10.26	11.57	12.80	8.56	13.95	8.60
2066	7.37	8.92	10.33	11.66	12.94	8.62	14.11	8.64

**Table 6:** Spawning output relative to the 40 percent of unfished spawning output target by year for base rebuilding strategies

Year	SPR= .500	SPR= .600	SPR= .700	SPR= .800	SPR= .900	Yr=Tmid F=0	40-10 rule	ABC Rule
2021	0.35	0.35	0.35	0.35	0.35	0.35	0.35	0.35
2022	0.30	0.30	0.30	0.30	0.30	0.30	0.30	0.30
2023	0.25	0.25	0.25	0.25	0.25	0.25	0.25	0.25
2024	0.27	0.28	0.28	0.28	0.28	0.28	0.29	0.28
2025	0.30	0.31	0.31	0.32	0.32	0.31	0.32	0.30
2026	0.33	0.34	0.35	0.36	0.36	0.34	0.37	0.34
2027	0.36	0.38	0.39	0.40	0.41	0.37	0.41	0.37
2028	0.39	0.41	0.42	0.44	0.45	0.41	0.46	0.40
2029	0.41	0.44	0.46	0.48	0.49	0.43	0.50	0.43
2030	0.44	0.47	0.49	0.51	0.53	0.46	0.54	0.45
2031	0.46	0.50	0.53	0.55	0.57	0.49	0.59	0.48
2032	0.48	0.53	0.56	0.59	0.61	0.52	0.63	0.51
2033	0.51	0.56	0.59	0.63	0.66	0.55	0.68	0.53
2034	0.53	0.58	0.63	0.66	0.70	0.57	0.72	0.56
2035	0.55	0.61	0.66	0.70	0.74	0.60	0.77	0.59
2036	0.57	0.64	0.70	0.74	0.78	0.63	0.82	0.61
2037	0.60	0.67	0.73	0.78	0.83	0.66	0.87	0.64
2038	0.62	0.70	0.76	0.82	0.87	0.68	0.91	0.67
2039	0.64	0.72	0.80	0.86	0.91	0.71	0.96	0.69
2040	0.65	0.75	0.82	0.89	0.95	0.73	1.01	0.71
2041	0.67	0.77	0.85	0.93	0.99	0.75	1.05	0.73
2042	0.69	0.79	0.88	0.96	1.03	0.78	1.09	0.76
2043	0.71	0.82	0.92	1.00	1.08	0.80	1.14	0.78
2044	0.72	0.84	0.95	1.04	1.12	0.82	1.19	0.80
2045	0.74	0.87	0.98	1.07	1.16	0.84	1.23	0.82
2046	0.76	0.89	1.00	1.10	1.19	0.87	1.28	0.84
2047	0.78	0.91	1.03	1.14	1.23	0.89	1.32	0.87
2048	0.80	0.94	1.06	1.17	1.28	0.91	1.37	0.89
2049	0.81	0.96	1.09	1.21	1.31	0.93	1.41	0.91
2050	0.83	0.98	1.11	1.24	1.35	0.95	1.45	0.93
2051	0.84	0.99	1.14	1.27	1.38	0.96	1.49	0.94
2052	0.85	1.01	1.16	1.29	1.41	0.98	1.52	0.96
2053	0.86	1.03	1.18	1.32	1.44	1.00	1.56	0.97
2054	0.87	1.04	1.20	1.34	1.47	1.01	1.59	0.98
2055	0.88	1.06	1.22	1.37	1.50	1.02	1.62	1.00
2056	0.89	1.07	1.24	1.39	1.54	1.04	1.66	1.01
2057	0.90	1.09	1.26	1.41	1.56	1.05	1.70	1.03
2058	0.91	1.10	1.28	1.44	1.59	1.07	1.73	1.04
2059	0.93	1.12	1.29	1.46	1.61	1.08	1.75	1.06

**Table 6:** Spawning output relative to the 40 percent of unfished spawning output target by year for base rebuilding strategies (*continued*)

Year	SPR= .500	SPR= .600	SPR= .700	SPR= .800	SPR= .900	Yr=Tmid F=0	40-10 rule	ABC Rule	
2060	0.93	1.14	1.31	1.48	1.64	1.10	1.79	1.11	1.07
2061	0.94	1.15	1.33	1.50	1.67	1.10	1.82	1.12	1.08
2062	0.95	1.16	1.35	1.52	1.69	1.11	1.85	1.13	1.09
2063	0.96	1.16	1.36	1.54	1.71	1.12	1.87	1.14	1.10
2064	0.96	1.17	1.37	1.56	1.73	1.13	1.89	1.15	1.11
2065	0.97	1.18	1.38	1.58	1.75	1.14	1.92	1.15	1.12
2066	0.98	1.20	1.40	1.59	1.77	1.16	1.94	1.16	1.13



### 8.3 Sensitivity rebuilding reference points and policy projections

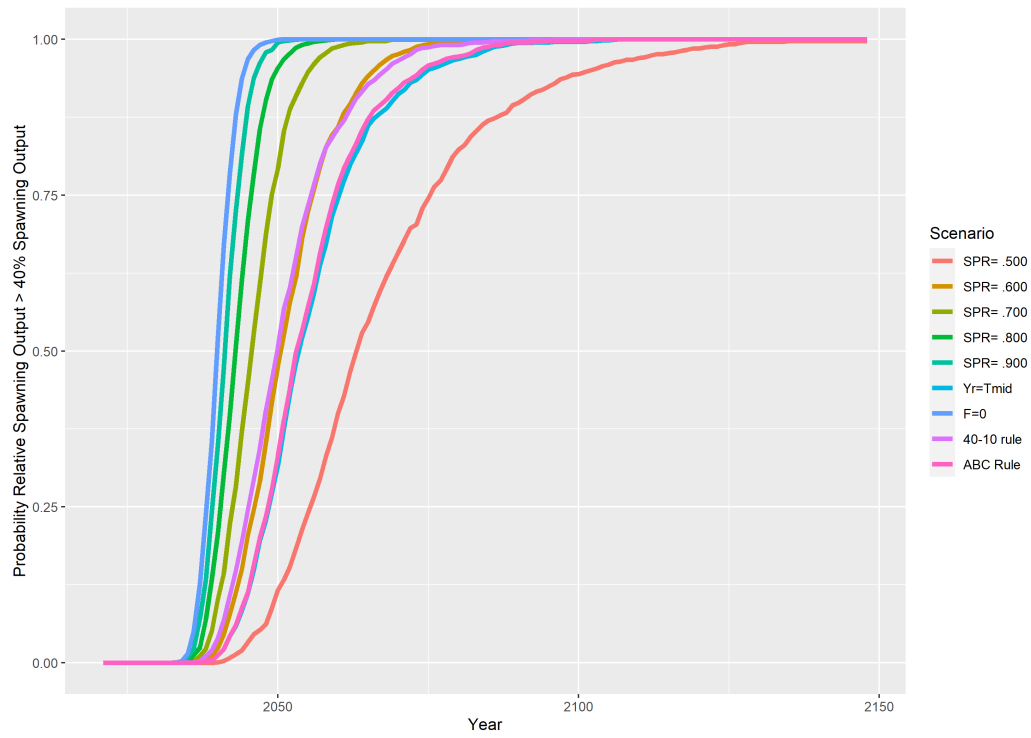
**Table 7:** Summary of the rebuilding sensitivity reference points

Parameter	2021 Assessment Values
SB0 (millions of eggs)	58.69
SB40 (millions of eggs)	23.475
SB2021 (millions of eggs)	8.71
Year rebuilding begins	2023
Current year	2021
Tmin	2039
Mean generation time (years)	27
Tmax	2066
TF=0	2039
Ttarget	TBD
SPRtarget	TBD
Current SPR (2021)	0.1367

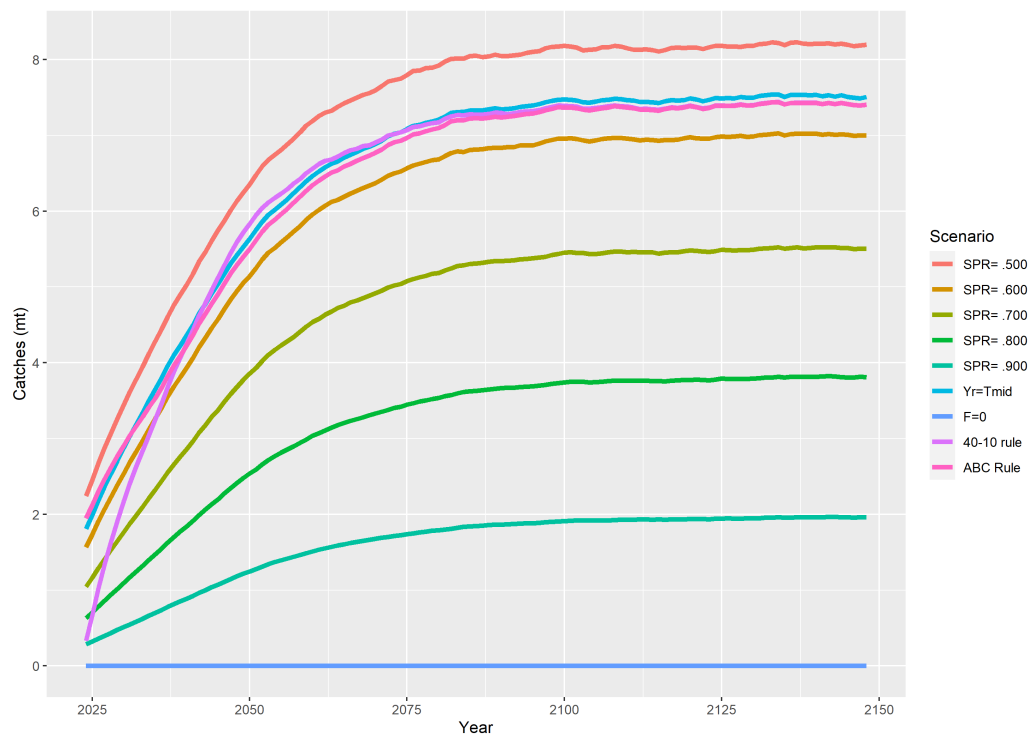
**Table 8:** Results of rebuilding sensitivity based on alternative SPR targets for 50 percent probability of recovery based on the assumed removals for 2021-22. Rebuilding sensitivity blocks selectivity in 2001 and allows dome-shaped selectivity. SPR for the ABC and 40-10 strategies is provided as a dash (-) because these strategies do not have a constant SPR value

	SPR= .500	SPR= .600	SPR= .700	SPR= .800	SPR= .900	Yr=Tmid F=0	40-10 rule	ABC Rule
2021 Assumed Removals (mt)	13.5	13.5	13.5	13.5	13.5	13.5	13.5	13.5
2022 Assumed Removals (mt)	13.5	13.5	13.5	13.5	13.5	13.5	13.5	13.5
2023 ACL (mt)	2.45	1.69	1.12	0.67	0.3	1.71	0	2.14
2024 ACL (mt)	2.66	1.86	1.24	0.75	0.34	1.88	0	2.31
SPR	0.5	0.6	0.7	0.8	0.9	0.597	1	-
Ttarget	2062	2050	2045	2042	2040	2050	2039	2052
Tmax	2066	2066	2066	2066	2066	2066	2066	2066
Probability of recovery by Tmax	0.608	0.96	0.997	1	1	0.956	1	0.901

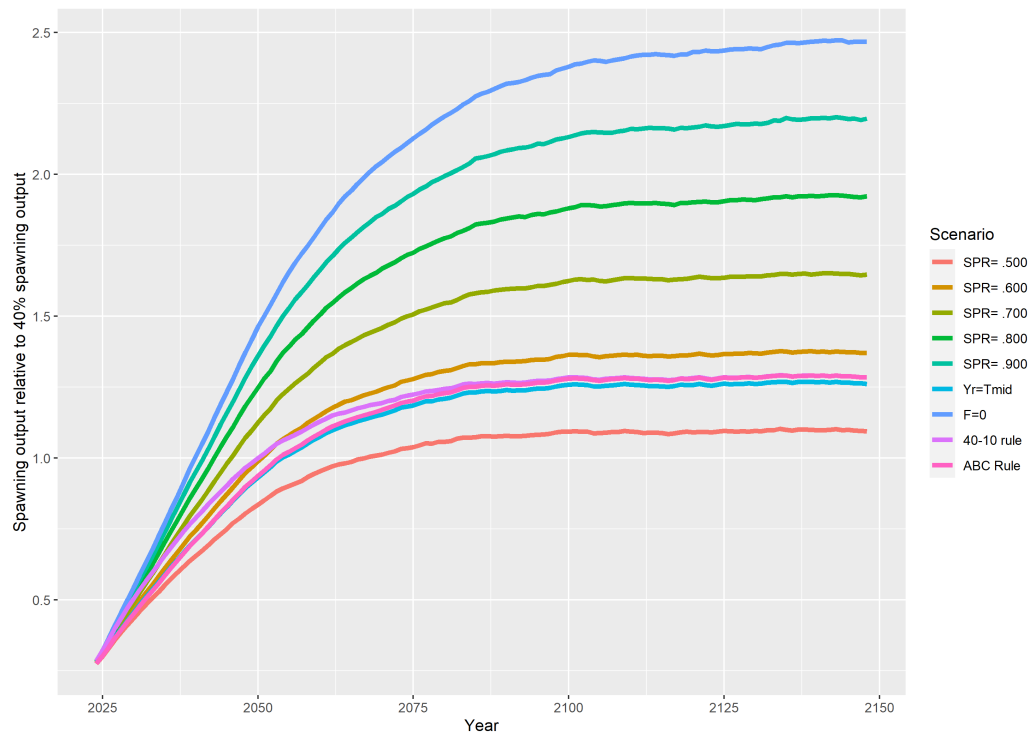
## 9 Figures



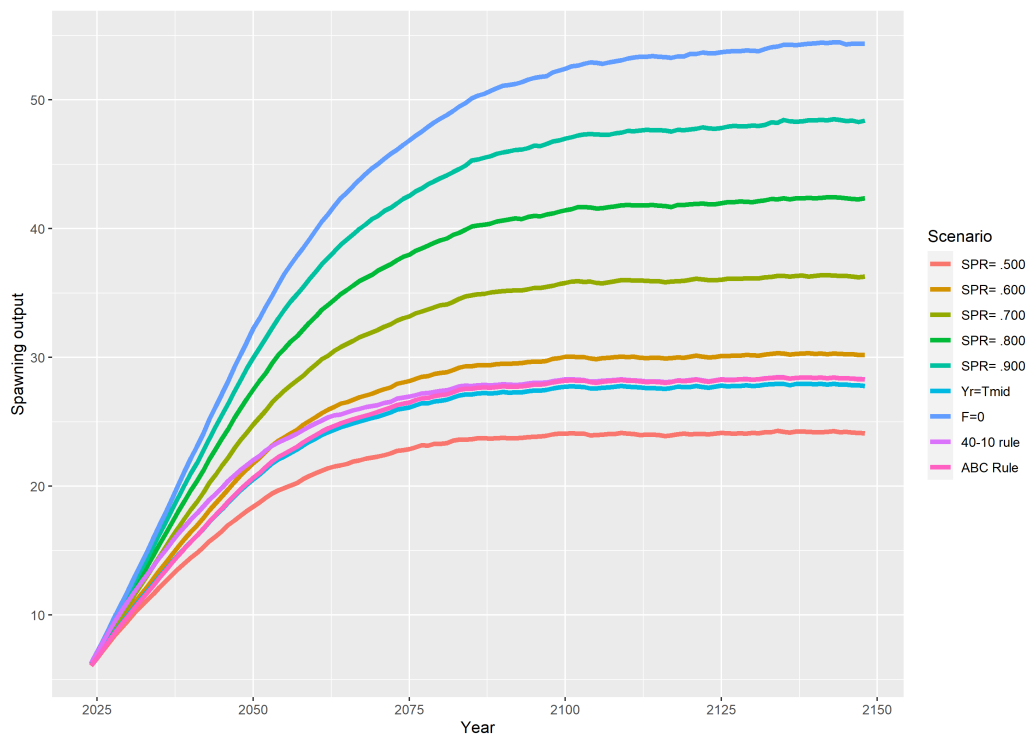
**Figure 1:** Probability of rebuilding by year for the base alternative rebuilding strategies.



**Figure 2:** Catches (mt) by year for the base alternative rebuilding strategies.



**Figure 3:** Spawning output relative to the management target of 40 percent of unfished spawning output by year for the base alternative rebuilding strategies.



**Figure 4:** Spawning output by year for the base alternative rebuilding strategies.

## **10 Appendix**

### **10.1 Appendix A: Rebuilder data file.**

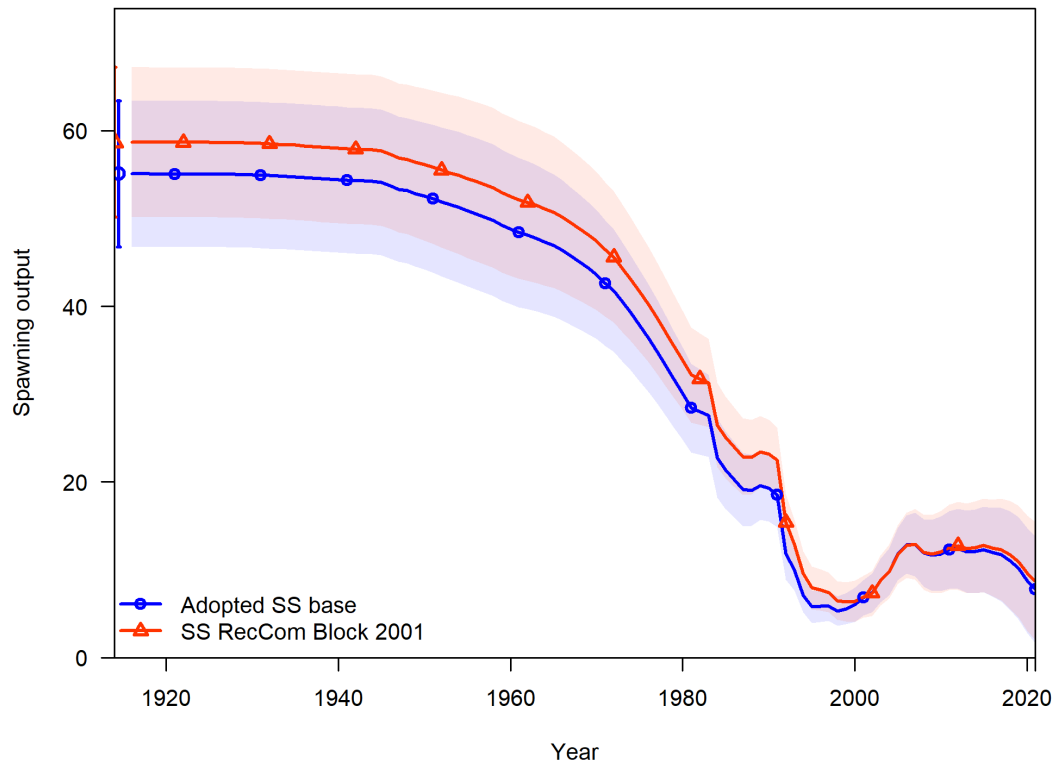
The rebuild.dat file used for the base rebuilding analysis has been provided as a separate file.

**10.2 Appendix B: Comparison between the approved stock synthesis base case model and the stock synthesis sensitivity model with dome-shaped selectivity and blocks in 2001.**

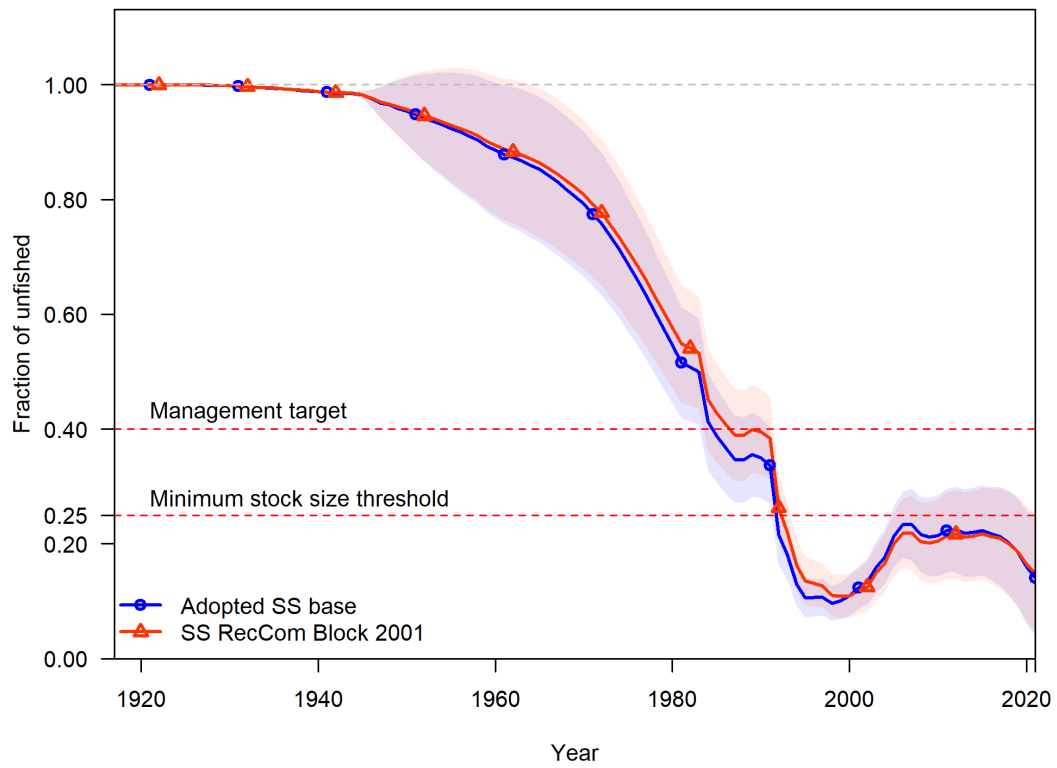


**Table 9:** Parameter values and derived quantities from the stock synthesis sensitivity model with blocks in 2001 and allowing dome-shaped selectivity, compared to the adopted base model.

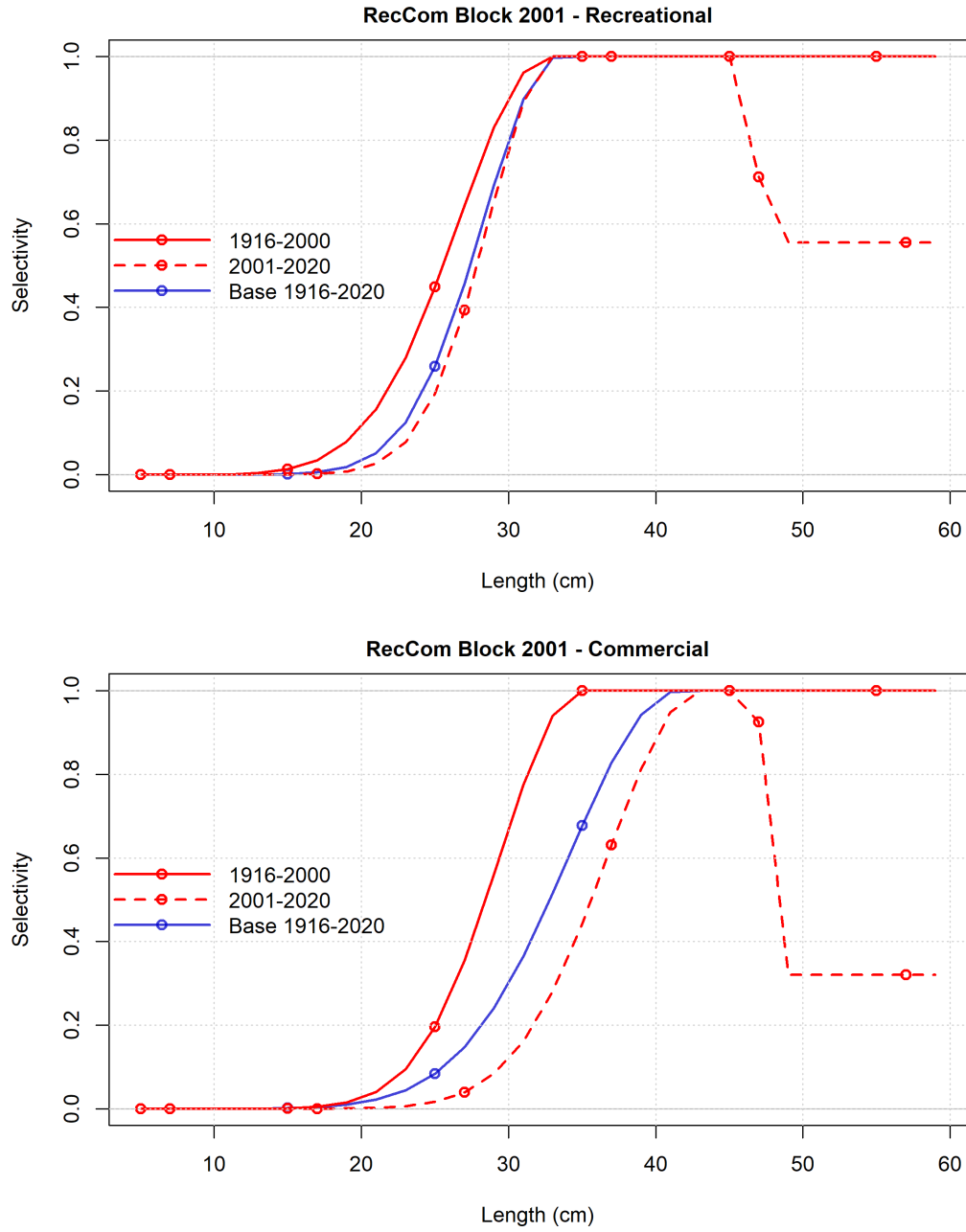
	Adopted SS base	SS RecCom Block 2001
Total Likelihood	186.85	168.92
Length Likelihood	163.10	152.53
Recruitment Likelihood	23.75	16.39
Parameter Bounds Likelihood	0.00	0.00
N parms	98.00	108.00
AIC	569.70	553.84
delta AIC	0.00	-15.86
ln(R0)	3.17	3.23
SB Virgin	55.08	58.69
SB 2021	7.75	8.71
Fraction Unfished 2021	0.14	0.15
Total Yield at SPR 50	8.41	8.79
Peak commercial selex	41.57	43.06
Ascend se commercial selex	4.71	4.38
Peak recreational selex 2020	33.36	33.13
Ascend se recreational selex 2020	3.95	3.70



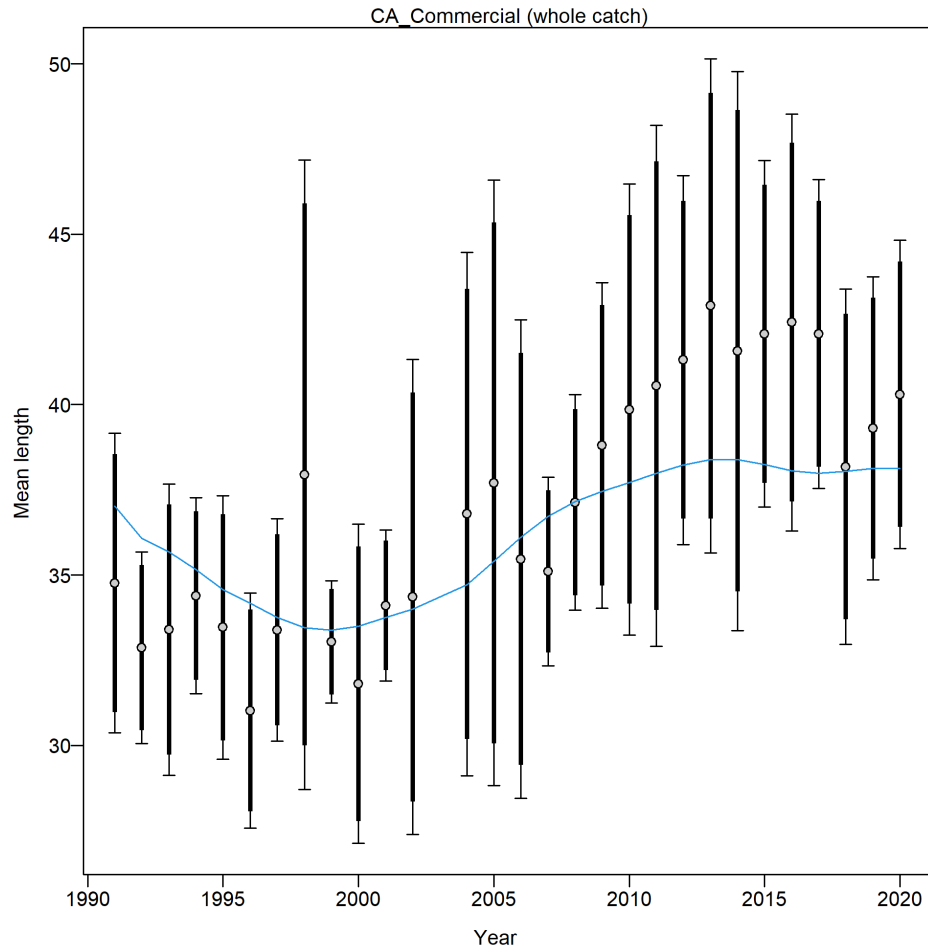
**Figure 5:** Change in estimated spawning output for the adopted stock synthesis base model (base) and the stock synthesis sensitivity model (RecCom Block 2001). Shading indicates 95 percent confidence intervals around each scenario.



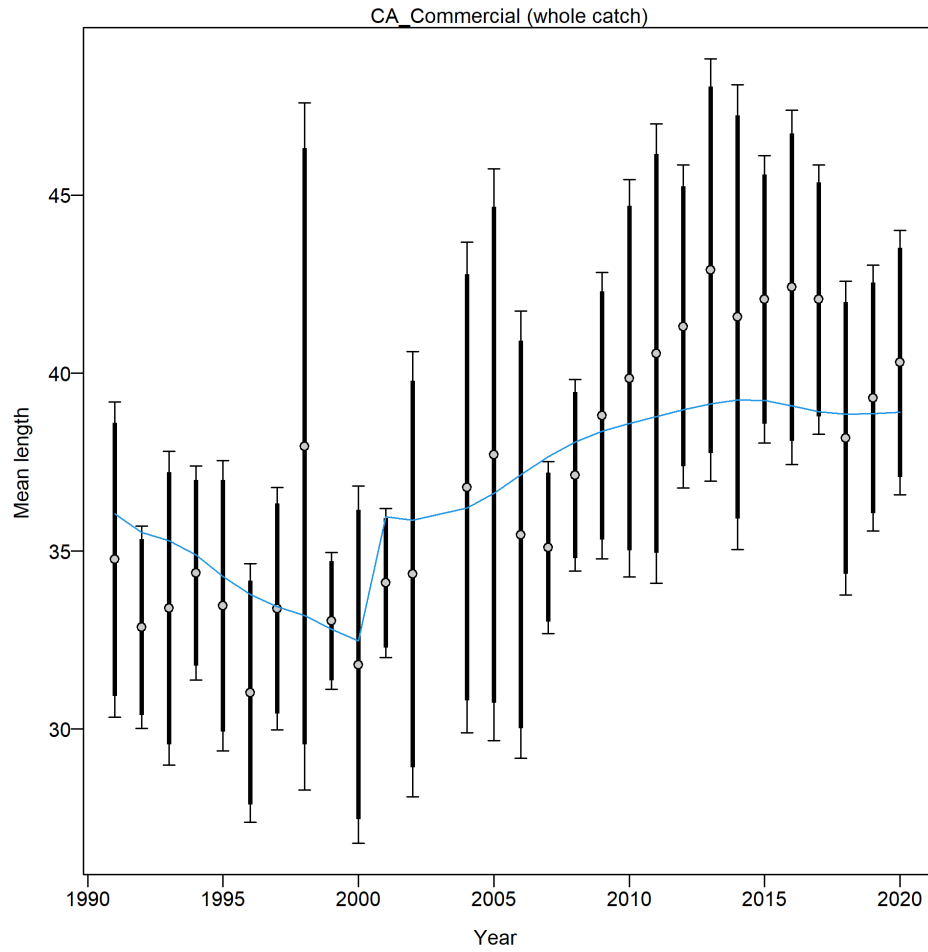
**Figure 6:** Change in estimated fraction of unfished for the adopted stock synthesis base model (base) and the stock synthesis sensitivity model that informs the rebuilding sensitivity (RecCom Block 2001). Shading indicates 95 percent confidence intervals around each scenario.



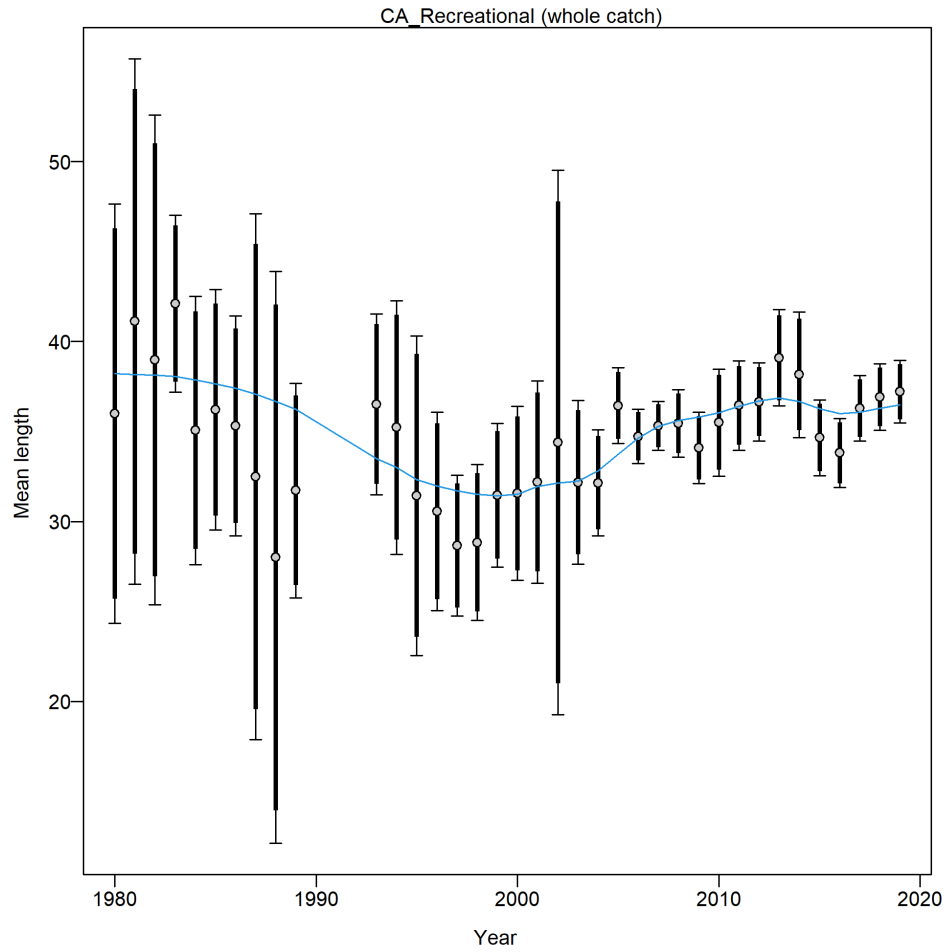
**Figure 7:** Recreational and commercial selectivity for the stock synthesis sensitivity model with blocks in 2001 and allowing dome-shaped selectivity (red lines) compared to the selectivity for the adopted base model (blue lines).



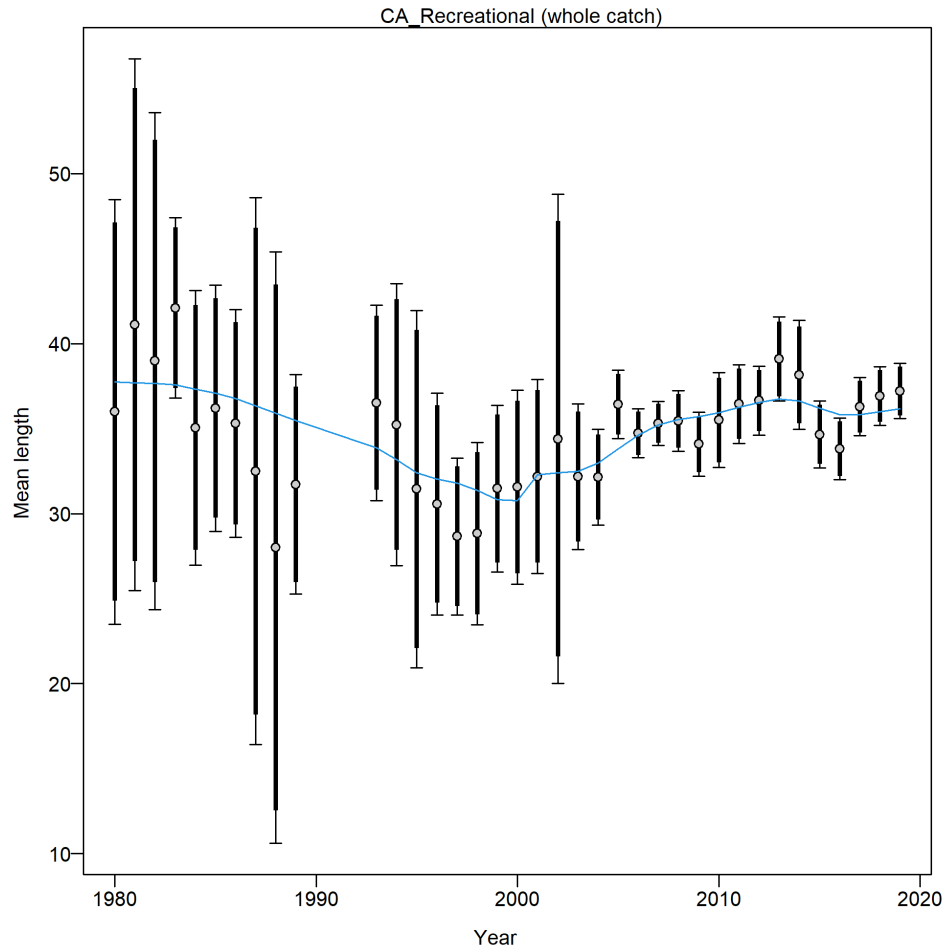
**Figure 8:** Mean length and fit (blue line) for the commercial length data from the adopted stock synthesis base model with 95 percent confidence intervals (solid black bar) based on current samples sizes. Thinner intervals (with capped ends) show result of further adjusting sample sizes based on suggested multiplier for Francis data weighting.



**Figure 9:** Mean length and fit (blue line) for the commercial length data from the stock synthesis sensitivity model with 95 percent confidence intervals (solid black bar) based on current samples sizes. Thinner intervals (with capped ends) show result of further adjusting sample sizes based on suggested multiplier for Francis data weighting.

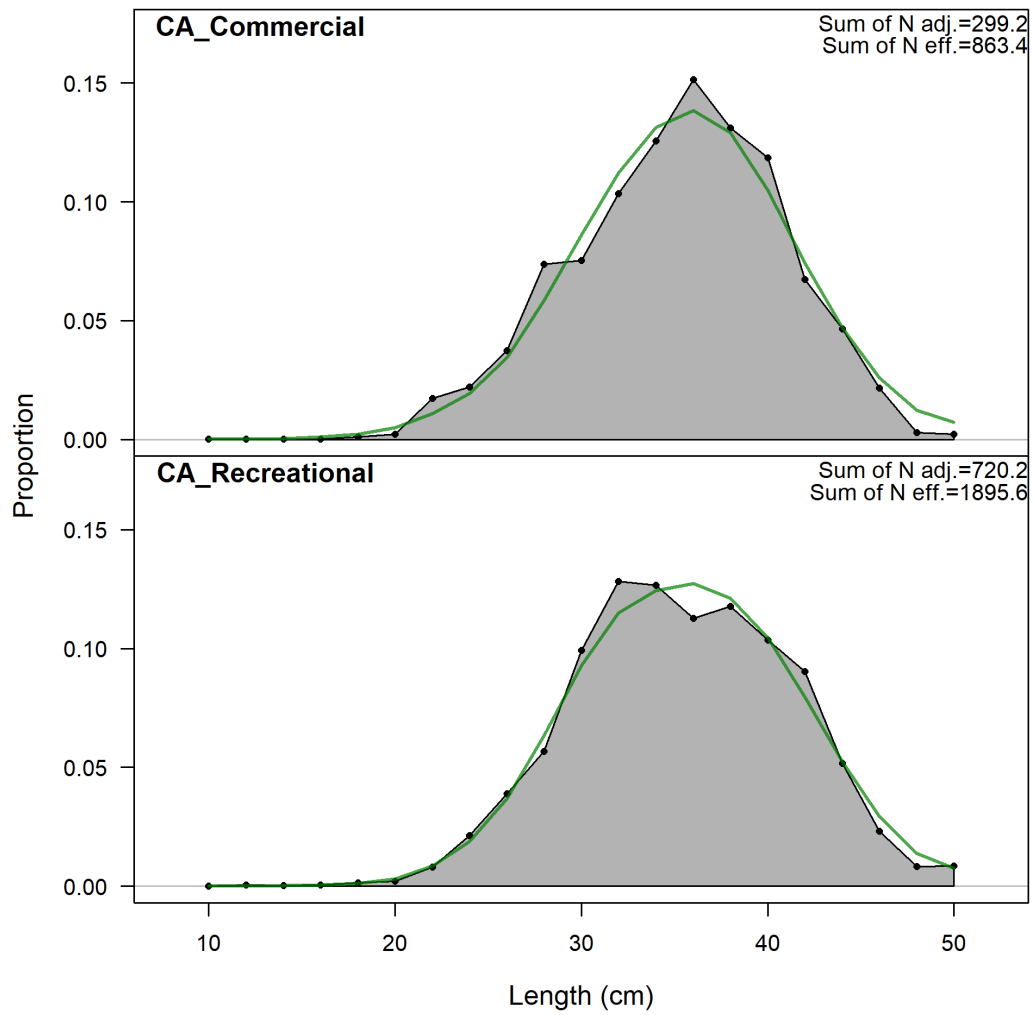


**Figure 10:** Mean length and fit (blue line) for the recreational length data from the adopted stock synthesis base model with 95 percent confidence intervals (solid black bar) based on current samples sizes. Thinner intervals (with capped ends) show result of further adjusting sample sizes based on suggested multiplier for Francis data weighting.

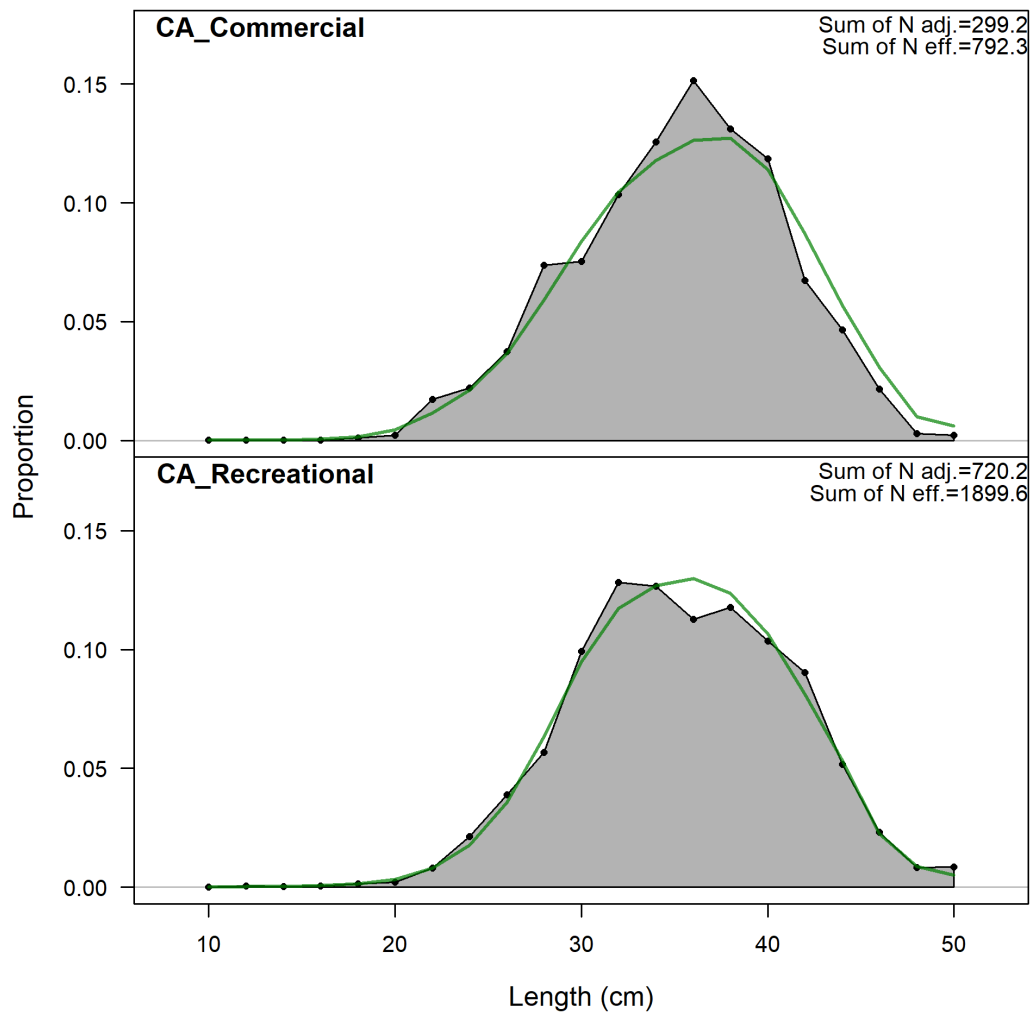


**Figure 11:** Mean length and fit (blue line) for the recreational length data from the stock synthesis sensitivity model with 95 percent confidence intervals (solid black bar) based on current samples sizes. Thinner intervals (with capped ends) show result of further adjusting sample sizes based on suggested multiplier for Francis data weighting.

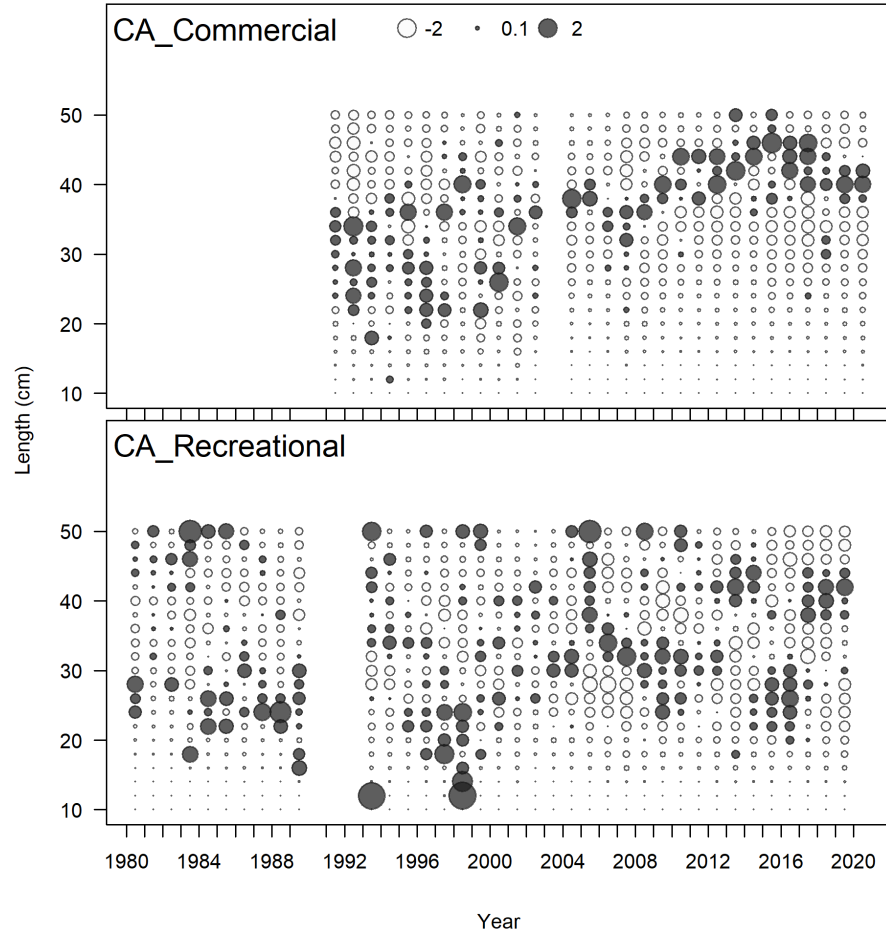




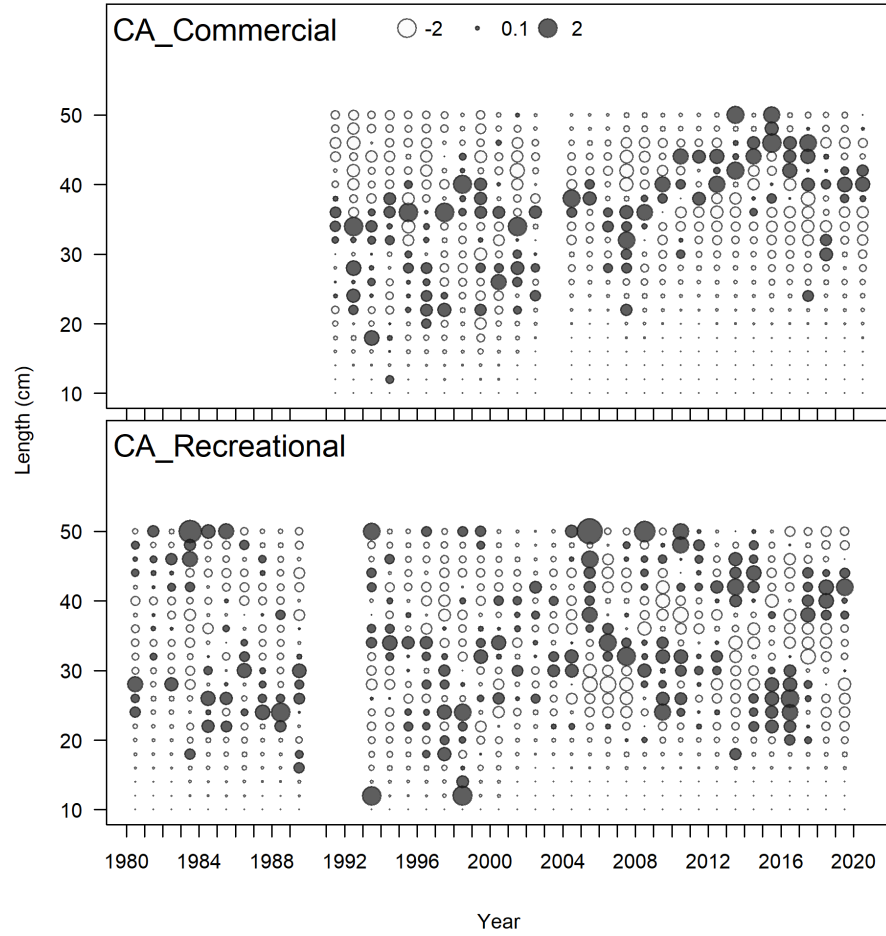
**Figure 12:** Aggregated length comps over all years for the adopted stock synthesis base model.



**Figure 13:** Aggregated length comps over all years for the stock synthesis sensitivity model.



**Figure 14:** Pearson residuals for the recreational and commercial fleets for the adopted stock synthesis base model. Closed bubbles are positive residuals (observed > expected) and open bubbles are negative residuals (observed < expected).



**Figure 15:** Pearson residuals for the recreational and commercial fleets for the stock synthesis sensitivity model. Closed bubbles are positive residuals (observed > expected) and open bubbles are negative residuals (observed < expected).