

Pacific Coast Groundfish

PFMC Agenda Item C.8: 2023-24 Management



Ben Enticknap & Geoff Shester, PhD

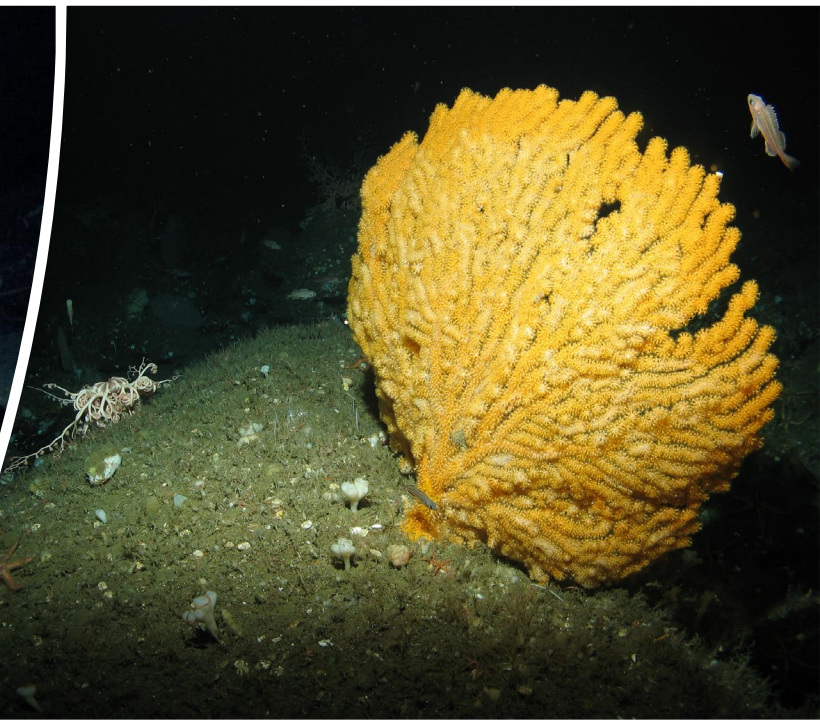
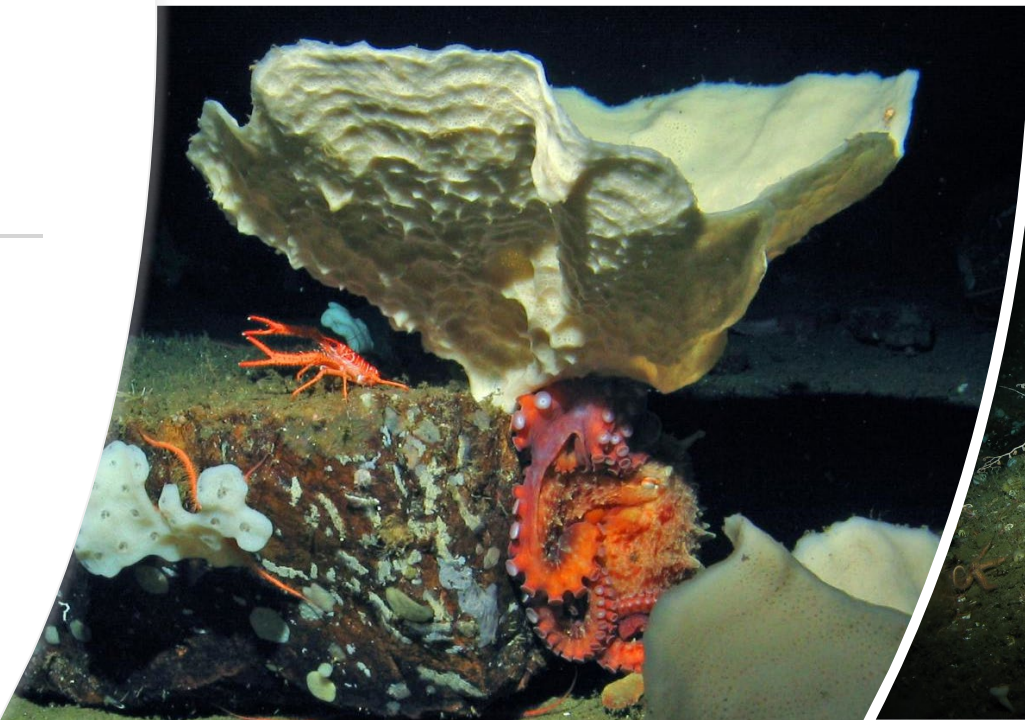
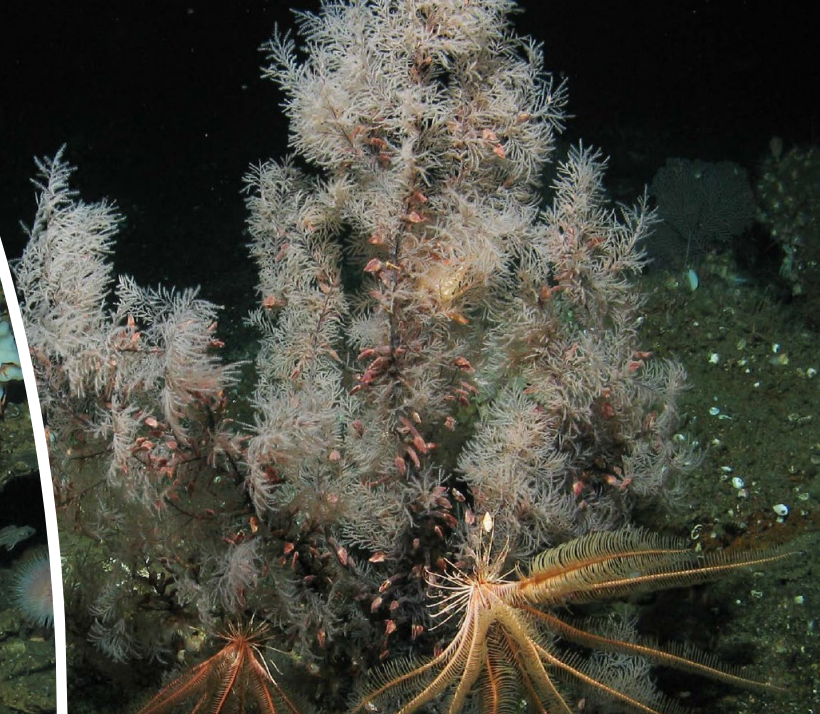
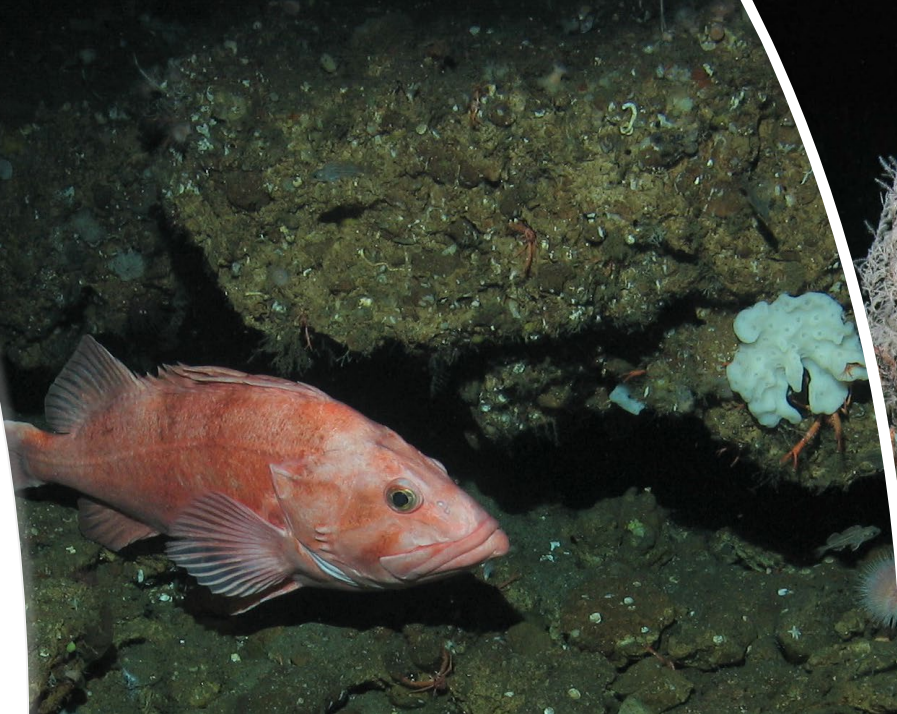
Quillback and Copper Rockfish

Recommendations:

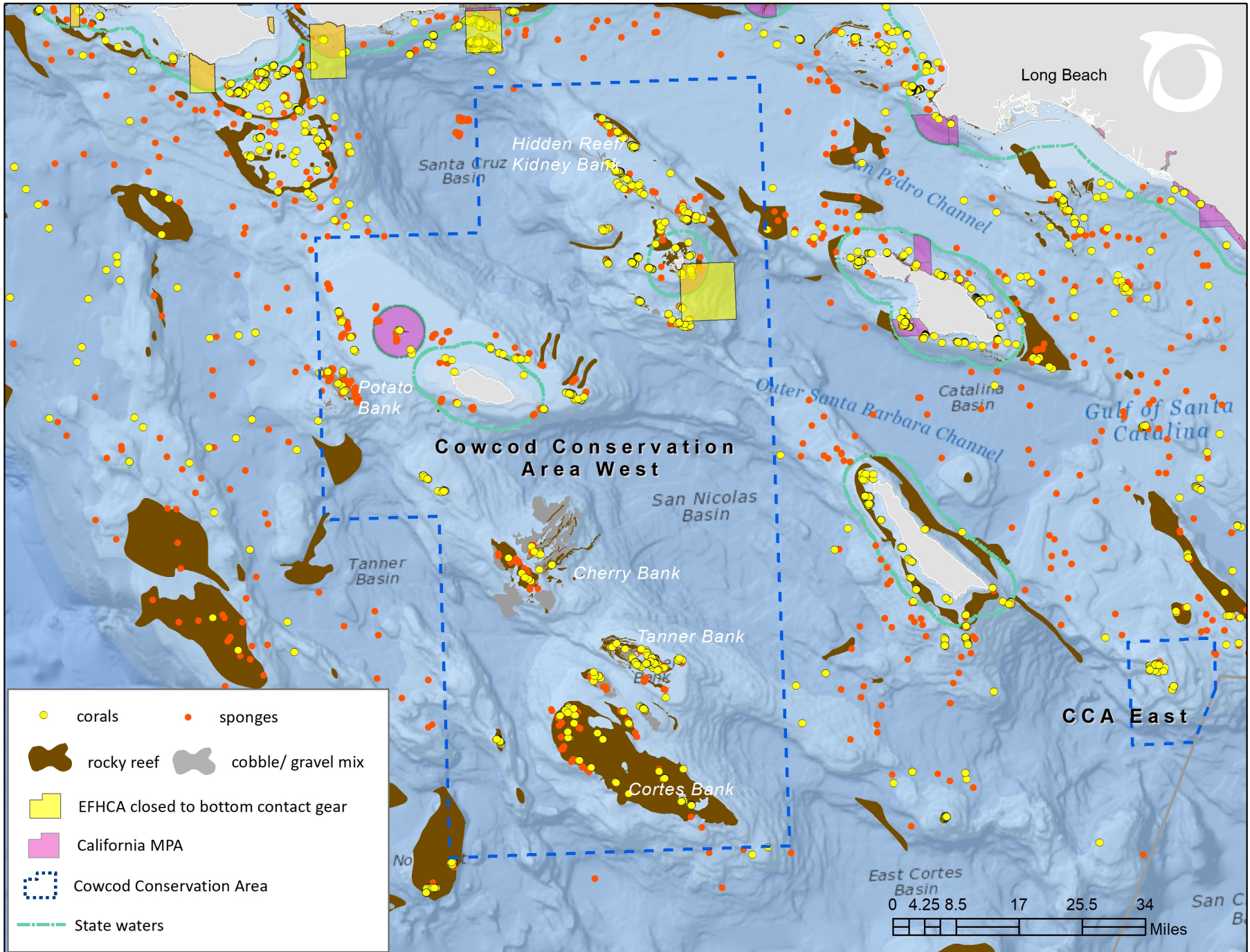
- Remove these rockfish from the nearshore rockfish stock complex and manage with separate overfishing and catch limits
- Modify the scale of management to reflect stock structure as defined by the stock assessments
- Begin development of rebuilding plans



Cowcod
Conservation
Areas







Shortbelly Rockfish

Recommendations:

- Prohibit Directed Fishing in the Groundfish FMP Amendment that implements the 23-24 Specifications
- Define "Directed Commercial Fishing" consistent with Shared EC Species Prohibition (50 CFR §660.5(b)):

*“Directed Commercial Fishing” means that a fishing vessel lands **shortbelly rockfish** without landing any other species, or lands **shortbelly rockfish** with other species and in amounts more than:*

- (1) **XX** mt from any fishing trip; or*
- (2) **XX** mt in any calendar year.*

- Select limit amounts to account for 99% of historic landings over last 10 years

