

INTERNATIONAL PACIFIC

Agenda Item F.1.a

Supplemental IPHC Presentation 1

March 2021



HALIBUT COMMISSION

# Outcomes of the 97<sup>th</sup> Session of the IPHC Annual Meeting (AM097)



# 97<sup>th</sup> Session of the IPHC Annual Meeting (AM097)

- 25 - 29 January 2021 , IPHC HQ – Seattle, WA, USA.
- Held electronically (**270** participants; 216 in 2020)
- Open to public
- AM097 webpage:

<https://www.iphc.int/venues/details/97th-session-of-the-iphc-annual-meeting-am097>



INTERNATIONAL PACIFIC  
HALIBUT COMMISSION

IPHC-2021-AM097-R

## Report of the 97<sup>th</sup> Session of the IPHC Annual Meeting (AM097)

Meeting held electronically, 25-29 January 2021

### Commissioners

Canada	United States of America
Paul Ryall	Glenn Merrill
Neil Davis	Robert Alverson
Peter DeGreef	Richard Yamada

### Executive Director

David T. Wilson, Ph.D.

### DISTRIBUTION:

Participants in the Session  
Members of the Commission  
IPHC Secretariat

### BIBLIOGRAPHIC ENTRY

IPHC 2021. Report of the 97<sup>th</sup> Session of the IPHC Annual Meeting (AM097). Electronic meeting. 25-29 January 2021.  
*IPHC-2021-AM097-R, 50 pp.*



# Mortality limits for 2021

Contracting Party IPHC Regulatory Area	Mortality limit (TCEY) (metric tonnes)	Mortality limit (TCEY) (mlbs)
<b><u>Canada</u> Total: 2B</b>	<b>3,175</b>	<b>7.00</b>
<b>USA: 2A</b>	748	1.65
<b>USA: 2C</b>	2,631	5.80
<b>USA: 3A</b>	6,350	14.00
<b>USA: 3B</b>	1,415	3.12
<b>USA: 4A</b>	930	2.05
<b>USA: 4B</b>	635	1.40
<b>USA: 4CDE</b>	1,805	3.98
<b><u>United States of America</u> Total</b>	<b>14,515</b>	<b>32.00</b>
<b>Total (IPHC Convention Area)</b>	<b>17,690</b>	<b>39.00</b>



# Mortality limits for 2020 to 2021

Contracting Party IPHC Regulatory Area	Mortality limit (TCEY) (mlbs)	Mortality limit (TCEY) (mlbs)	% change
<b><u>Canada</u> Total: 2B</b>	<b>6.83</b>	<b>7.00</b>	<b>2.49</b>
<b>USA: 2A</b>	1.65	1.65	0
<b>USA: 2C</b>	5.85	5.80	-0.85
<b>USA: 3A</b>	12.20	14.00	14.75
<b>USA: 3B</b>	3.12	3.12	0
<b>USA: 4A</b>	1.75	2.05	17.14
<b>USA: 4B</b>	1.31	1.40	6.87
<b>USA: 4CDE</b>	3.90	3.98	2.05
<b><u>United States of America</u> Total</b>	<b>29.78</b>	<b>32.00</b>	<b>7.46</b>
<b>Total (IPHC Convention Area)</b>	<b>36.60</b>	<b>39.00</b>	<b>6.56</b>



In millions of pounds	2A	2B	2C	3A	3B	4A	4B	4CDE	Total
<b>Directed commercial discard mortality</b>	0.03	0.17	NA	NA	0.11	0.12	0.05	0.08	0.56
<b>O26 Non-directed discard mortality</b>	0.10	0.23	0.09	1.14	0.42	0.24	0.12	2.20	4.54
<b>Recreational</b>	NA	0.04	0.94	1.53	0.01	0.02	0.00	0.00	2.54
<b>Subsistence</b>	NA	0.41	0.37	0.19	0.02	0.01	0.00	0.03	1.02
<b>Total Non-FCEY</b>	0.14	0.84	1.39	2.86	0.56	0.39	0.17	2.31	8.66
<b>Directed commercial discard mortality</b>	NA	NA	0.07	0.24	NA	NA	NA	NA	0.31
<b>Recreational</b>	0.61	0.92	0.81	1.95	NA	NA	NA	NA	4.29
<b>Subsistence</b>	0.03	NA	NA	NA	NA	NA	NA	NA	0.03
<b>Commercial Landings</b>	0.87	5.23	3.53	8.95	2.56	1.66	1.23	1.67	25.70
<b>Total FCEY</b>	1.51	6.15	4.41	11.14	2.56	1.66	1.23	1.67	30.34
<b>TCEY</b>	<b>1.65</b>	<b>7.00</b>	<b>5.80</b>	<b>14.00</b>	<b>3.12</b>	<b>2.05</b>	<b>1.40</b>	<b>3.98</b>	<b>39.00</b>
<b>U26 Non-directed discard mortality</b>	0.00	0.03	0.00	0.29	0.06	0.08	0.01	0.78	1.25
<b>Total Mortality</b>	1.65	7.03	5.80	14.29	3.18	2.13	1.41	4.76	40.25

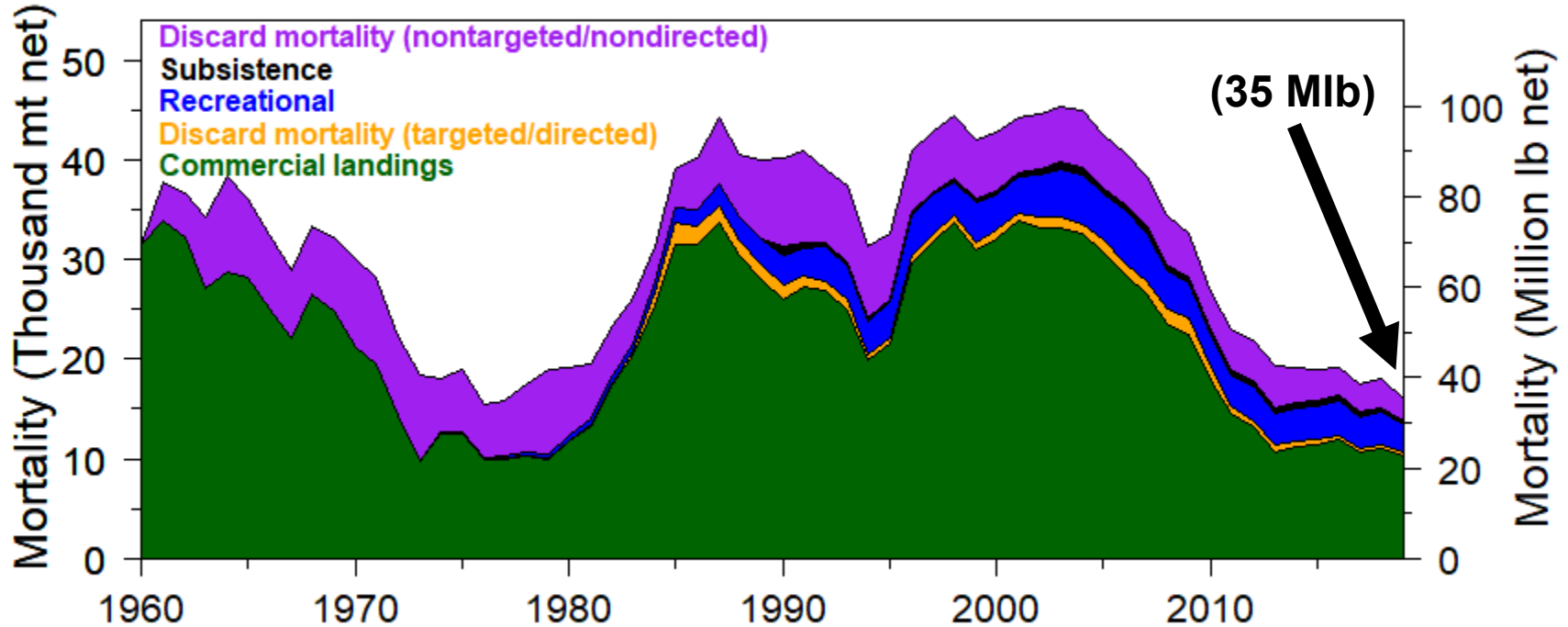


# Data collection during 2020

- Standard IPHC fishery sampling completed in all Regulatory Areas
- Extensive IPHC Fishery-Independent Setline Survey (FISS) in Areas 2B-3B



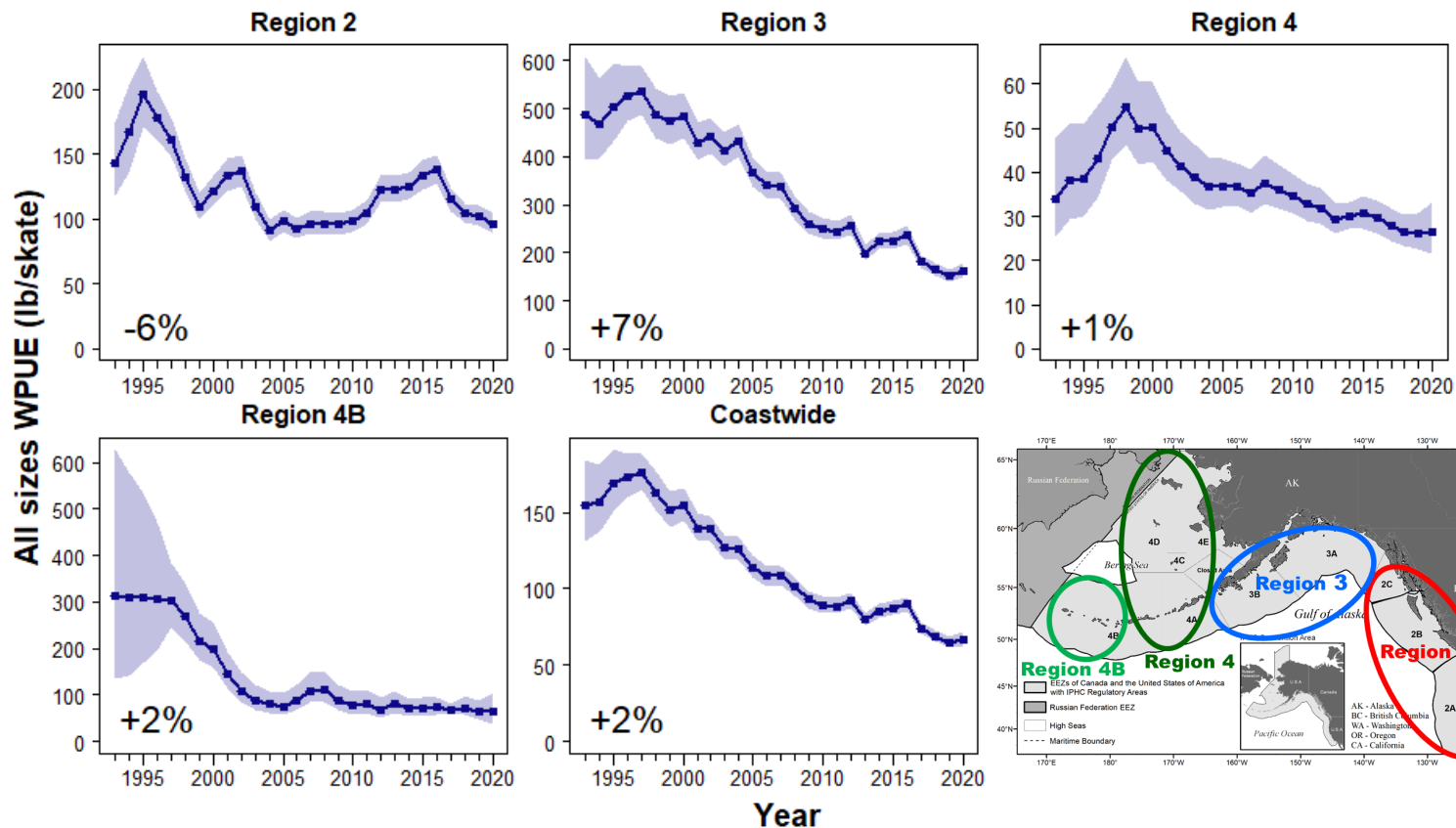
# Historical mortality



Reductions in 2020 due to: reduced mortality limits and many sectors below limits

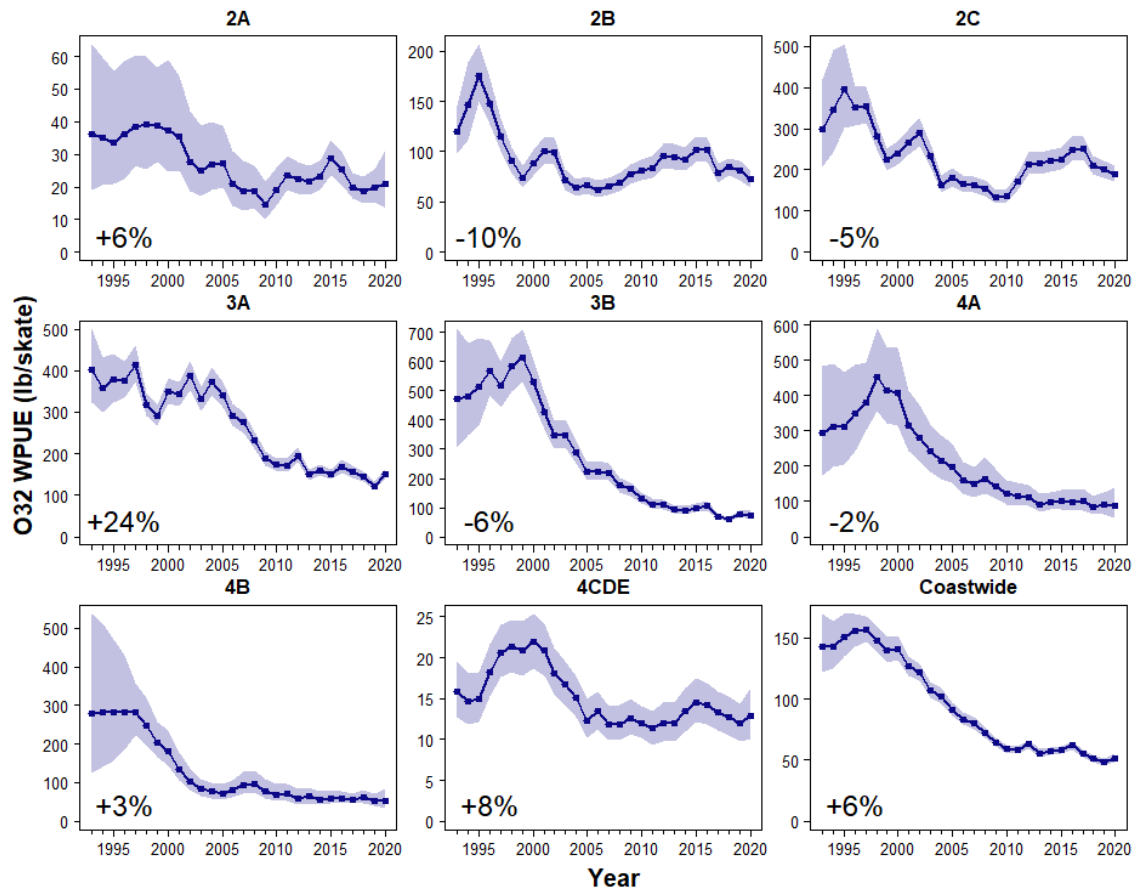


# Modelled survey trends (all sizes WPUE)





# Modelled survey trends (O32 WPUE)



## O32 biomass

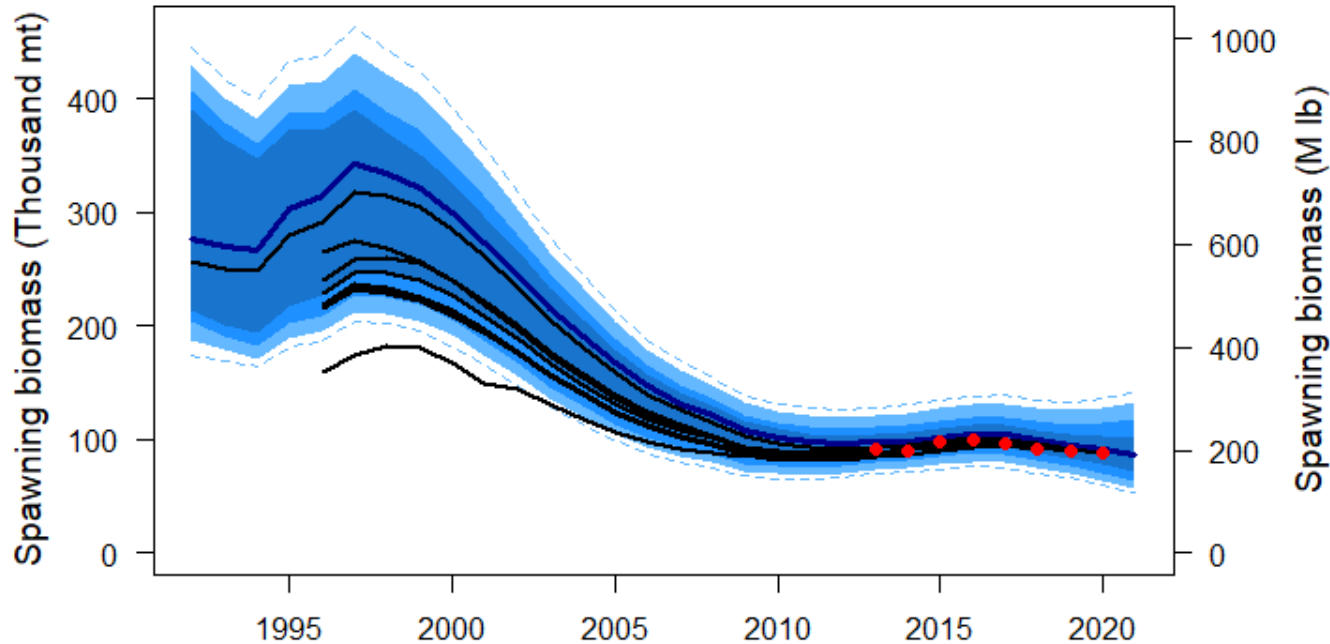
- Region 2 was down
- Region 3 was up

This had a large effect on stock distribution.



# Modelling in 2020

- Update to the full assessment in 2019
- Estimated trends very similar to recent assessments



# Assessment summary table

Indicators	Values	Trends	Status
<b>Total mortality 2020:</b> <b>Retained catch 2020:</b> <b>Average mortality 2016-20:</b>	<b>35.50 MLBS, 16,103 T</b> <b>29.65 MLBS, 13,449 T</b> <b>39.59 MLBS, 17.959 T</b>	<b>MORTALITY</b> <b>DECREASED FROM</b> <b>2019 TO 2020</b>	<b>2020 MORTALITY NEAR</b> <b>100-YEAR LOW</b>
<b>SPR<sub>2020</sub>:</b> <b>P(SPR&lt;43%):</b> <b>P(SPR&lt;limit):</b>	<b>48% (34-65%)</b> <b>38%</b> <b>LIMIT NOT SPECIFIED</b>	<b>FISHING INTENSITY</b> <b>DECREASED FROM</b> <b>2019 TO 2020</b>	<b>FISHING INTENSITY</b> <b>BELOW REFERENCE</b> <b>LEVEL</b>
<b>SB<sub>2021</sub> (Mlb):</b> <b>SB<sub>2021</sub>/SB<sub>0</sub>:</b> <b>P(SB<sub>2021</sub>&lt;SB<sub>30</sub>):</b> <b>P(SB<sub>2021</sub>&lt;SB<sub>20</sub>):</b>	<b>192 MLBS (125–292)</b> <b>33% (22-52%)</b> <b>41%</b> <b>&lt;1%</b>	<b>SB DECREASED 17%</b> <b>FROM 2016 TO 2021</b>	<b>NOT OVERFISHED</b>
<b>Biological stock</b> <b>distribution:</b>	<b>SEE TABLES AND</b> <b>FIGURES</b>	<b>REGION 4</b> <b>INCREASING</b>	<b>REGION 4 NEAR</b> <b>HISTORICAL HIGH</b>



# For more data and assessment information

- Assessment and data overview documents are available through the [stock assessment page](#) of the IPHC's website:
  - [IPHC-2021-SA-01](#)
  - [IPHC-2021-SA-02](#)

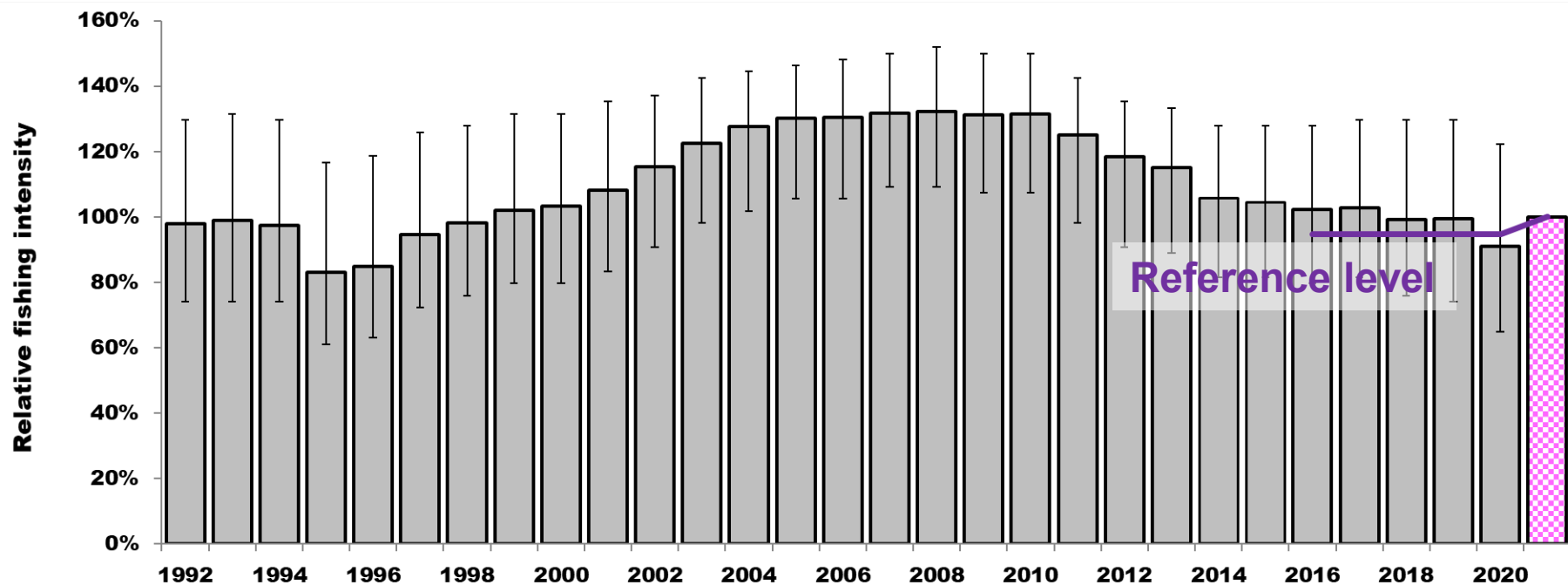


# 2021 mortality limit (39.0 M lb)

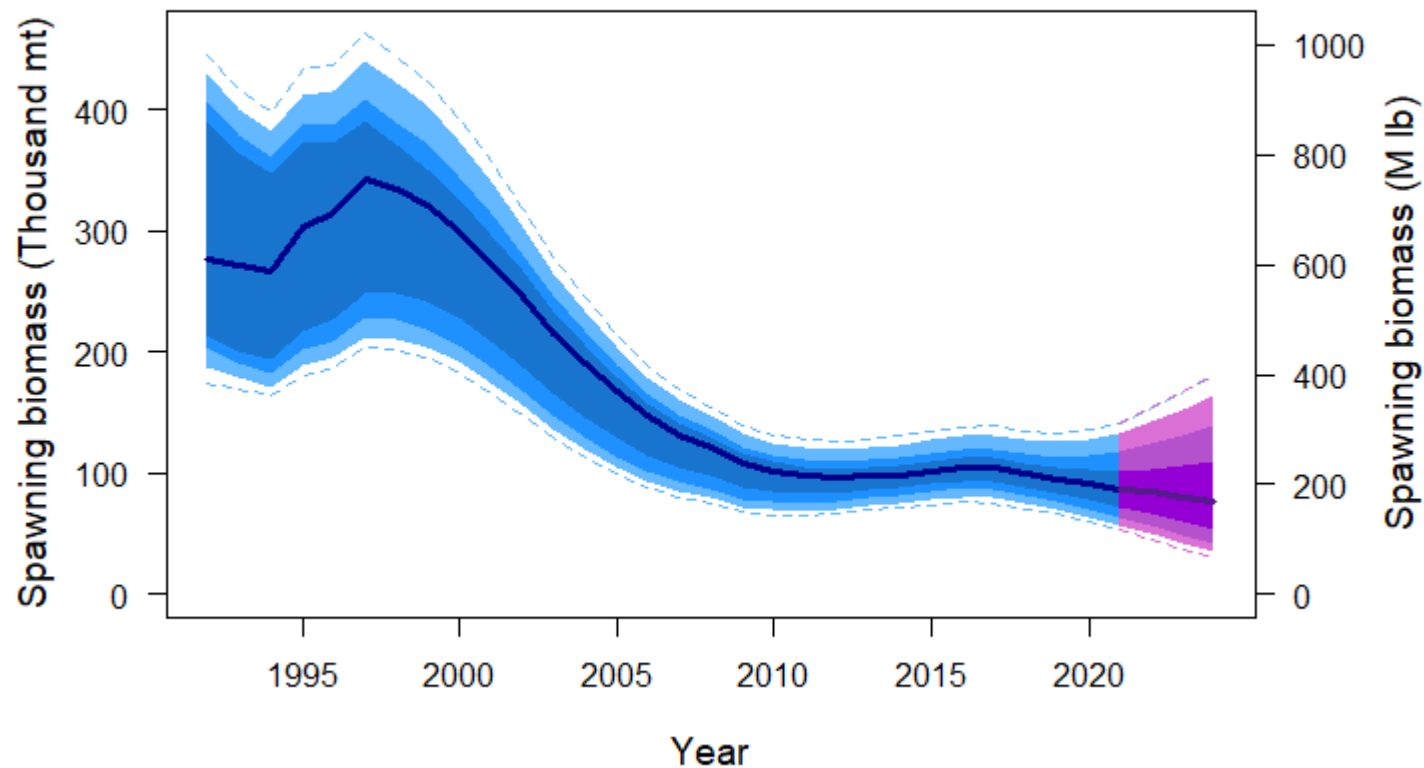
- Based on the IPHC's reference level of fishing intensity ( $F_{43\%}$ ) adopted for 2021
  - Evaluated via the IPHC's MSE process
- Corresponds to projections of:
  - 65% probability of decrease in SB during 2021
  - 41% probability of dropping below  $SB_{30\%}$  management trigger by 2022
  - 50% probability of fishery limit decrease in 2022



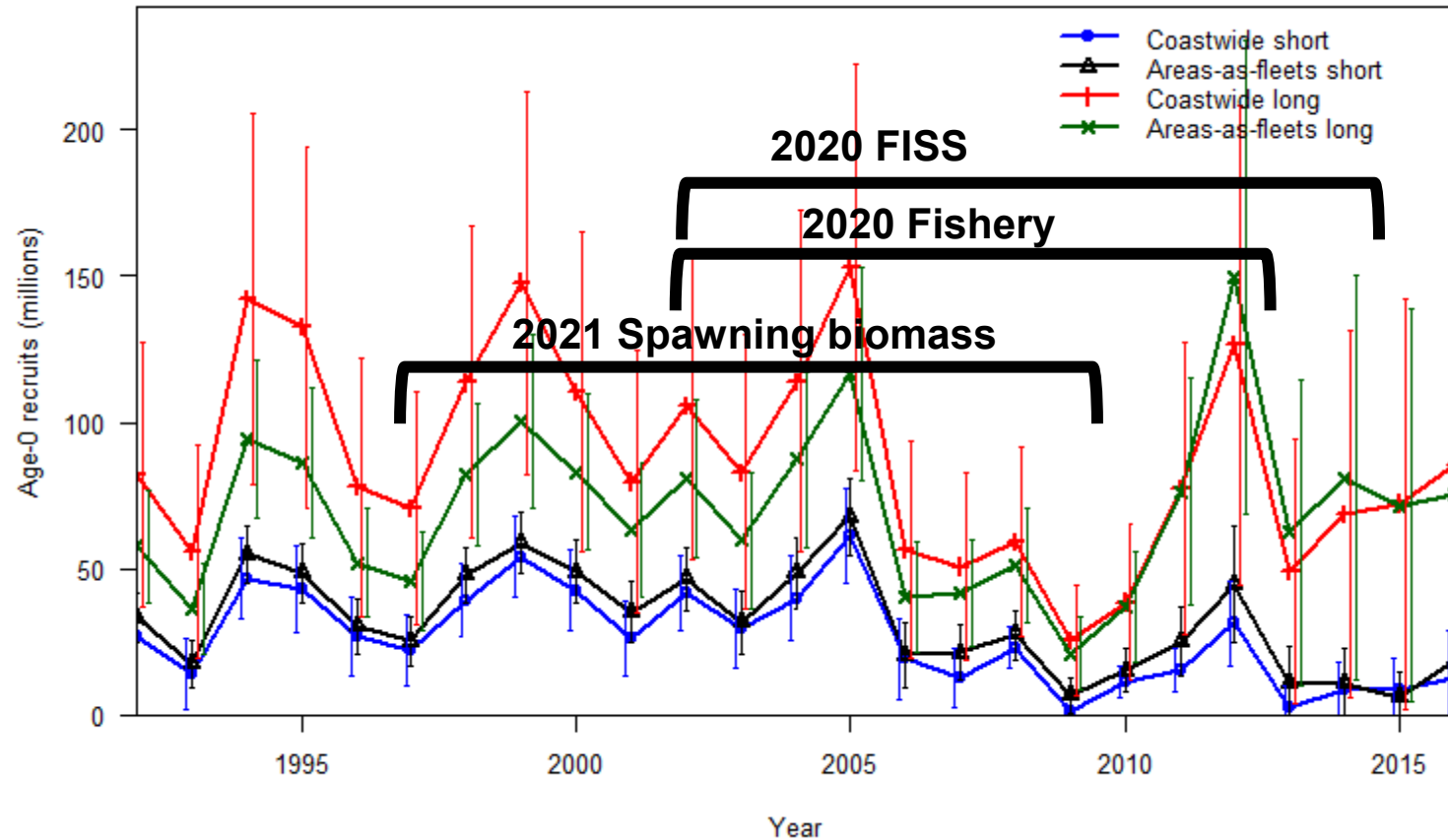
# Recent and projected fishing intensity



# Projected stock trend



# Recruitment estimates





# 97<sup>th</sup> Session of the IPHC Annual Meeting (AM097)

- Other decisions:
  - Fishing periods
  - 2021 Fishery-Independent Setline Survey (FISS)



# Fishing Periods

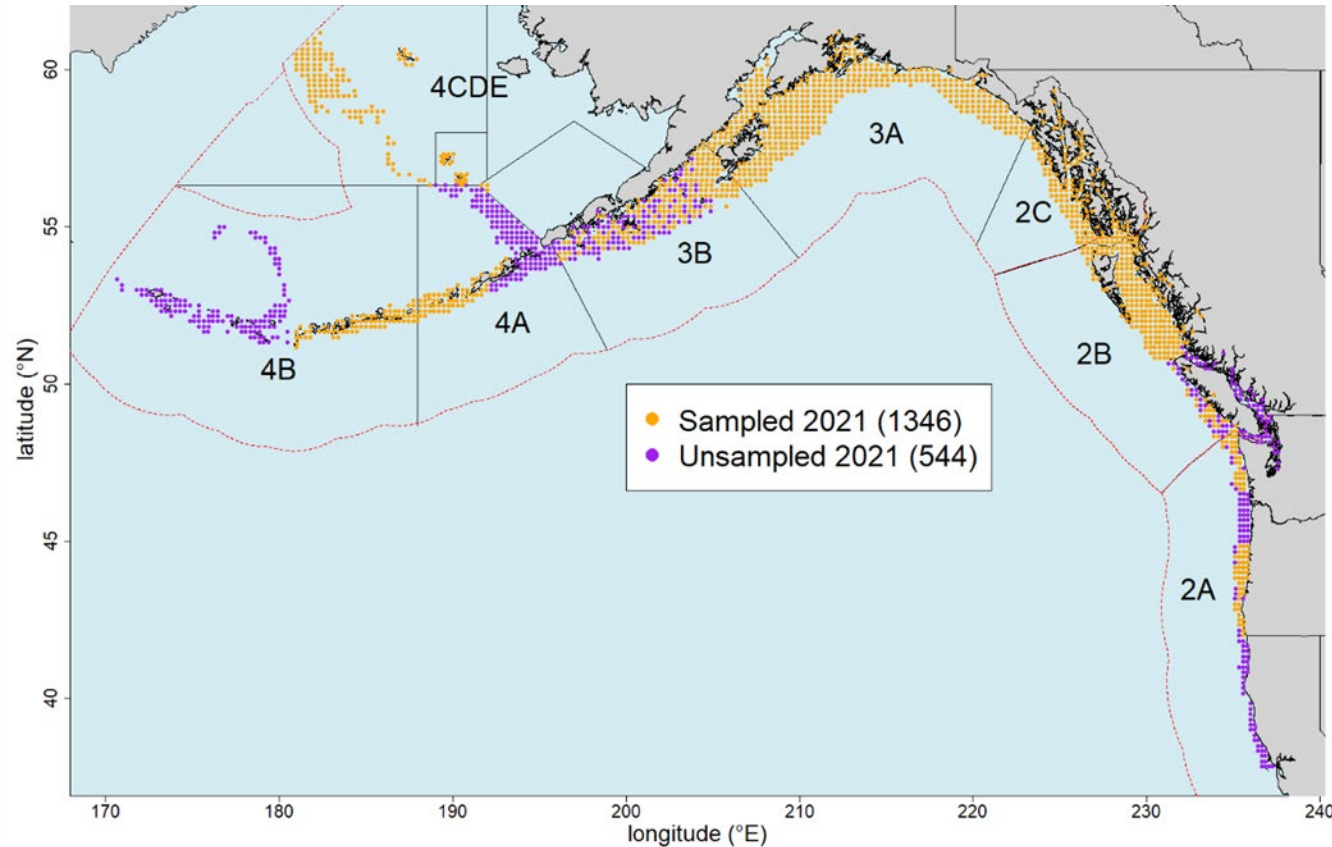
- The Commission **ADOPTED** fishing periods for 2021 as provided below, thereby superseding Section 9 of the IPHC Pacific halibut fishery regulations:
  - All commercial fishing for Pacific halibut in all IPHC Regulatory Areas may begin no earlier than **6 March** and must cease on **7 December**.



1. The Commission **NOTED** information paper IPHC-2021-AM097-INF05, which proposed changing the fishing period days of the week for the IPHC Regulatory Area 2A non-tribal directed commercial Pacific halibut fishery.
2. The Commission **NOTED** the indication from the IPHC Secretariat that the deadline for Regulatory Proposals (as prescribed in the IPHC Rules of Procedure (2020)) was 30 days prior to the opening of the 97th Session of the IPHC Annual Meeting (AM097) (i.e. 26 December 2020).
3. The Commission **AGREED** to make an exception to this Rule, and consider the contents of IPHC-2021-AM097-INF05, received on 28 January 2021.
4. The Commission **ADOPTED** fishery regulation changes contained within IPHC-2021-AM097-INF05, which revises the derby season structure from openings Monday through Wednesday, to openings Tuesday through Thursday.



# 2021 Fishery-Independent Setline Survey (FISS)



The Commission **NOTED** the updated information presented by the IPHC Secretariat on IPHC Regulatory Areas 4B and 2A FISS design, costs and estimated revenues. No further amendments to the 2021 FISS design approved at the 9<sup>th</sup> Special Session of the Commission (SS09) were made.



# Looking ahead

- 97<sup>th</sup> Session of the IPHC Interim Meeting (IM097)  
30 Nov – 1 Dec 2021
- 98<sup>th</sup> Session of the IPHC Annual Meeting (AM098)  
24-28 January 2022 in Bellevue, WA, USA.

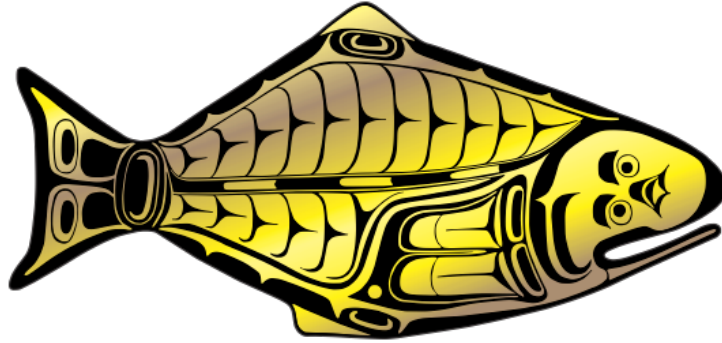


# Meeting materials and Report

- 97<sup>th</sup> Session of the IPHC Annual Meeting (AM097) materials available at:  
<https://www.iphc.int/venues/details/97th-session-of-the-iphc-annual-meeting-am097>
- AM097 Report
  - <https://www.iphc.int/library/documents/post/iphc-2021-am097-r-report-of-the-97th-session-of-the-iphc-annual-meeting-am097>



**INTERNATIONAL PACIFIC**



**HALIBUT COMMISSION**

