

DRAFT TEMPLATE OF THE UPDATED AREA 2A
PACIFIC HALIBUT CATCH SHARING PLAN.

AREA 2A
PACIFIC HALIBUT CATCH SHARING PLAN

For tribal, commercial, and recreational Pacific halibut fisheries off the coasts of
Washington, Oregon, and California

VERSION – August 14, 2020

Pacific Fishery Management Council
7700 NE Ambassador Place, Suite 101
Portland Oregon 97220-1384
503-820-2280
www.pcouncil.org

TABLE OF CONTENTS

	<u>Page</u>
1.0 Framework	4
2.0 Allocation.....	4
2.1 Subquotas.....	4
3.0 AREA OF APPLICATION	6
4.0 TREATY INDIAN FISHERIES.....	6
4.1 Allocation.....	6
4.2 Geographic area	6
4.3 Participants.....	6
4.4 General fishery description.....	6
4.5 Treaty Indian Ceremonial and Subsistence.....	7
4.5.1 Sub allocation.....	7
4.5.2 Season structure	7
4.5.3 Landing restrictions	7
4.6 Treaty Indian Commercial	7
4.6.1 Sub allocation.....	7
4.6.2 Season structure	7
4.6.3 Landing restrictions	7
5.0 NON-INDIAN COMMERCIAL FISHERIES	7
5.1 Allocation.....	7
5.2 Area description	8
5.3 General fishery description.....	8
5.4 Participants.....	8
5.5 Commercial license restrictions/declarations.	8
5.6 Directed Halibut Fishery.....	9
5.6.1 Sub allocation.....	9
5.6.2 Geographic area	9
5.6.3 Management objective	9
5.6.4 Season structure	9
5.6.5 Landing restrictions	9
5.6.6 Inseason adjustments	9
5.6.7 Groundfish regulations.....	9
5.6.8 Closed areas	9
5.7 Incidental halibut catch in the salmon troll fishery.....	9
5.7.1 Sub allocation.....	9
5.7.2 Management objectives	10
5.7.3 Season structure	10
5.7.4 Landing restrictions	10
5.7.5 Inseason adjustments	10
5.7.6 Groundfish regulations.....	11
5.7.7 Closed conservation areas.....	11
5.8 Incidental halibut catch in the primary directed sablefish fishery	11
5.8.1 Sub allocation.....	11
5.8.2 Season Structure.....	11

5.8.3	Landing restrictions	11
5.8.4	Inseason adjustments	11
5.8.5	Groundfish regulations.....	11
5.8.6	Closed conservation areas.....	12
6.0	SPORT FISHERIES	12
6.1	Allocation.....	12
6.2	Area description	12
6.3	General fishery description.....	12
6.4	Port of landing management	12
6.5	Vessel participation.....	12
6.6	Sport fishery closure provisions.....	12
6.7	Possession limits	13
6.8	Flexible inseason management provisions.....	13
6.8.1	Protocol for inseason modifications.....	13
6.8.2	Notice procedures	13
6.8.3	Effective dates.....	13
6.8.4	Availability of data	14
6.8.5	Flexible inseason management provisions.....	14
6.9	Washington Coast subareas	14
6.9.1	Puget Sound subarea.....	14
6.9.2	North Coast subarea.....	15
6.9.3	South coast subarea.....	16
6.10	Columbia River Subarea	17
6.11	Oregon Coast Subarea.....	18
6.11.1	Oregon central coast subarea.....	18
6.11.2	Southern Oregon subarea.....	22
6.12	California Coast	22
7.0	PROCEDURES FOR IMPLEMENTATION	23

LIST OF ACRONYMS AND ABBREVIATIONS

CDFW	California Department of Fish and Wildlife
CEY	Constant Exploitable Yield
Council	Pacific Fishery Management Council
CSP	Catch Sharing Plan
FCEY	Fishery Constant Exploitation Yield
IPHC	International Pacific Halibut Commission
NMFS	National Marine Fisheries Service
ODFW	Oregon Department of Fish and Wildlife
PFMC	Pacific Fishery Management Council (Council)
<u>RCA</u>	<u>Non-Trawl Rockfish Conservation Area (RCA)</u>
TAC	Total Allowable Catch, <u>see FCEY</u>
TCEY	Total Constant Exploitable Yield
WDFW	Washington Department of Fish and Wildlife
<u>YRCA</u>	<u>Yelloweye Rockfish Conservation</u>

1.0 FRAMEWORK

This document is the *Area 2A Pacific Halibut Catch Sharing Plan*, a catch sharing plan (CSP, or Plan) of the Pacific Fishery Management Council (Council, or PFMC) as revised and updated for implementation in ~~2020~~20XX. It guides tribal, non-tribal commercial, and recreational (or sport) Pacific halibut (halibut) fisheries off the coasts of Washington (WA), Oregon (OR) and California (CA) by prescribing an allocation formula for the allowable catch, and by describing the general season structure of the fisheries, especially in the sport sector.

The IPHC annually determines the amount of halibut available for harvest (in pounds of fish, net weight¹) in Area 2A through a process that is based on a stock assessment and harvest policy. Once the total constant exploitable yield (TCEY) is determined, projected bycatch and wastage mortality is subtracted. ~~The balance remaining isto produce~~ the fishery constant exploitable yield (FCEY). ~~and is expressed in this document as~~ FCEY is synonymous with total allowable catch (TAC), which was terminology used in this document prior to 2021.

This Plan ~~constitutes-describes~~ a framework that ~~shall be applied to~~ allocates the annual Area 2A ~~total allowable catch (TAC)~~ FCEY² To subareas. The annual FCEY is approved by the International Pacific Halibut Commission (IPHC) at their annual meeting which typically occurs in late January. The framework ~~shall be~~ is then implemented in both IPHC regulations and domestic regulations (~~implemented by~~ via National Marine Fisheries Service, NMFS) as published in the *Federal Register*.

2.0 ALLOCATION

This Plan allocates 35 percent of the Area 2A ~~TAC~~ FCEY to U.S. treaty Indian tribes in the State of Washington in subarea 2A-1, and 65 percent to non-~~Indian-tribal~~ fisheries in Area 2A. The allocation to non-~~Indian-tribal~~ fisheries is divided into four shares, with the Washington sport fishery (north of the Columbia River) receiving 35.6 percent, the Oregon sport fishery receiving 29.7 percent, the California sport fishery receiving 4.0 percent, and the commercial fishery receiving 30.7 percent. Allocations within the non-~~Indian-tribal~~ commercial and sport fisheries are described in sections 5 and 6 of this Plan.

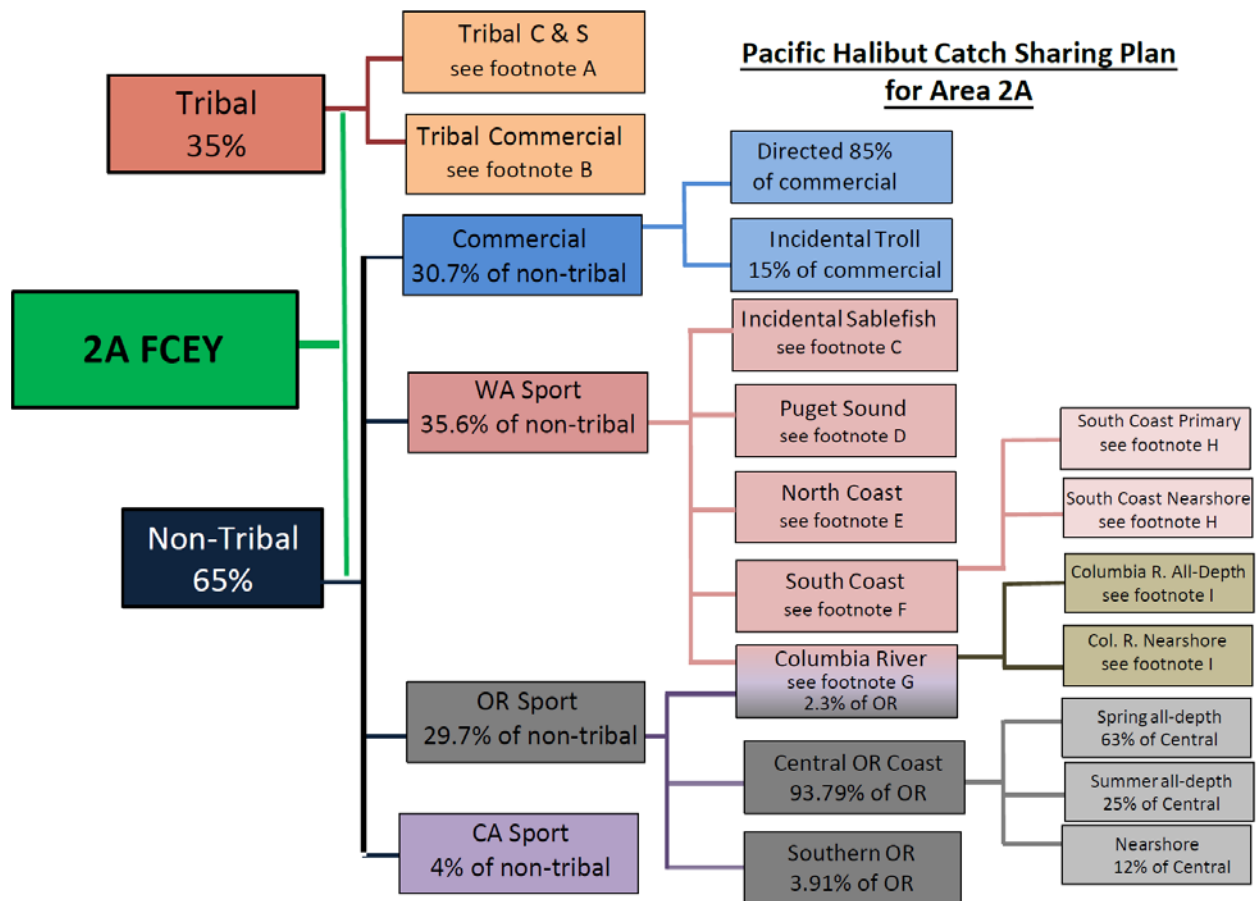
These allocations may be changed if new information becomes available that indicates a change is necessary and/or the ~~Pacific Fishery Management~~ Council takes action to reconsider its allocation recommendations. Such changes will be made after appropriate rulemaking is completed and published in the *Federal Register*. All allocations and subquotas are described in net weight, consistent with the IPHC's description of the ~~TAC~~ FCEY.

2.1 Subquotas

The allocations in this Plan are distributed as subquotas to ensure that any overage or underage by any one group will not affect achievement of an allocation set aside for another group. The specific allocative measures in the ~~treaty-Indian-tribal~~, non-~~Indian-tribal~~ commercial, and non-~~Indian-tribal~~ sport fisheries in Area 2A are described in sections 4 through 6.

¹ The weight of a fish with head and internal organs removed.

² ~~The term 'TAC' is used throughout this document, and is synonymous with fishery constant exploitable yield (FCEY).~~



Legend

- A. Previous year's catch estimate.
- B. Tribal allocation minus the Ceremonial and Subsistence estimate.
- C. Incidental halibut in the sablefish fishery: The primary sablefish fishery N. of Pt. Chehalis will be allocated the WA sport allocation that is in excess of 214,110 lbs up to 50,000 pounds provided a min. of 10,000 lbs is available. If the 2A TAC is 1.5 million pounds or more, the maximum allocation will increase to 70,000 lbs. If the amount above 214,110 is < 10,000 or greater than 50,000 (or 70,000 lbs), the excess will be allocated back to the WA sport areas.
- D. WA-Puget Sound: 23.5% of the first 130,845 pounds allocated to WA sport plus, 32% of the WA sport allocation between 130,845 and 224,110 lbs.
- E. WA-North Coast: 62.2% of the first 130,845 pounds allocated to WA sport plus, 32% of the WA sport allocation between 130,845 and 224,110 lbs.
- F. WA-South Coast: 12.3% of the first 130,845 pounds allocated to WA sport plus, 32% of the WA sport allocation between 130,845 and 224,110 lbs.
- G. WA-Columbia River: 2% of the first 130,845 pounds allocated to WA sport plus, 4% of the WA sport allocation between 130,845 and 224,110 lbs. plus anything over 8,000 lbs from the Southern Oregon Subarea.
- H. Open after the primary (all-depth) fishery closes, if sufficient quota remains.
- I. 500 pounds is reserved for a nearshore fishery, the remainder to the all-depth season.
- J. Southern Oregon Subarea: 3.91% of the Oregon sport allocation up to 8,000 lbs. Any poundage over 8,000 lbs, gets transfer red to the Columbia River Subarea.

3.0 AREA OF APPLICATION

This Plan applies only to IPHC Regulatory Area 2A (Area 2A, 2A), which ~~is off the coasts~~ includes all waters of the states of Washington, Oregon and California.

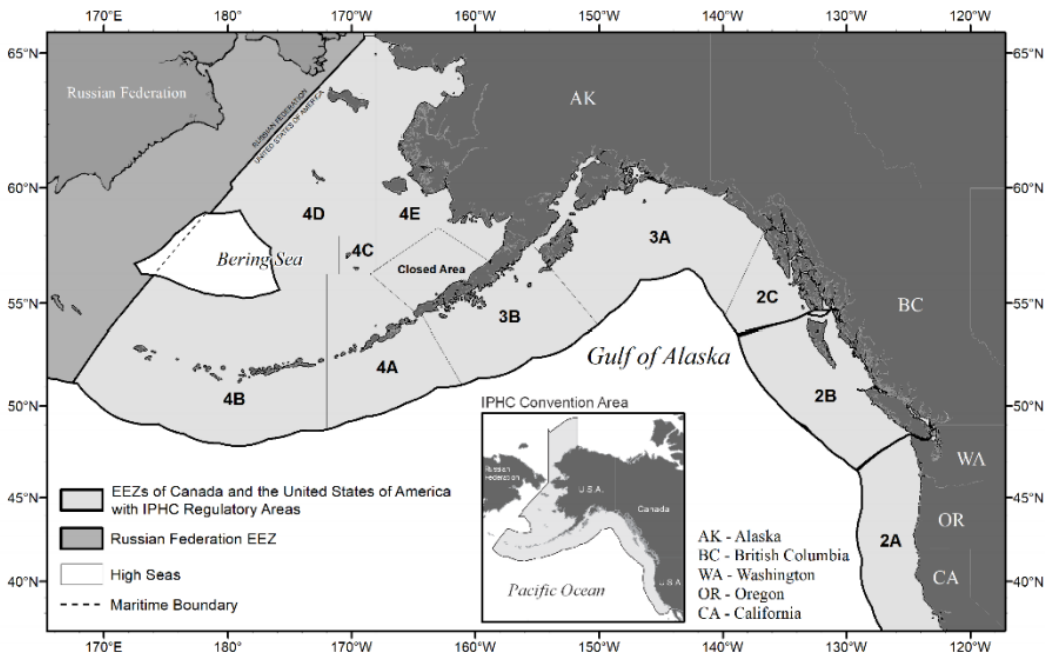


Figure 3.0.a – IPHC regulatory areas for the Pacific halibut fishery.

4.0 TREATY INDIAN TRIBAL FISHERIES

4.1 Allocation

Thirty-five percent of the Area 2A TAC-FCEY is allocated to 13 treaty Indian tribes in subarea 2A-1.

4.2 Geographic area

Subarea 2A-1 includes the usual and accustomed fishing areas for Pacific Coast treaty tribes off the coast of Washington and all inland marine waters of Washington north of Point Chehalis (46°53.30' N lat.), including Puget Sound. Boundaries of a tribe's fishing area may be revised as ordered by a Federal court.

Subarea 2A-1 includes: all waters off the coast of Washington that are north of the Quinault River, WA (47°21.00' N. lat.) and east of 125°44.00' W. long; all waters off the coast of Washington that are between the Quinault River, WA (47°21.00' N. lat.) and Point Chehalis, WA (46°53.30' N. lat.), and east of 125°08.50' W. long.; and all inland marine waters of Washington.

4.3 Participants

U.S. treaty Indian tribes in the State of Washington, with treaty-reserved rights to harvest halibut.

4.4 General fishery description

The treaty Indian allocation is to provide for a tribal commercial fishery and a ceremonial and subsistence fishery. These two fisheries are managed separately; any overages in the commercial

fishery do not affect the ceremonial and subsistence fishery. The commercial fishery is managed to achieve an established subquota, while the ceremonial and subsistence fishery is managed for a year-round season. The tribes will estimate the ceremonial and subsistence harvest expectations in January of each year, and the remainder of the allocation will be for the tribal commercial fishery.

4.5 ~~Treaty-Indian~~ Ceremonial and Subsistence

Ceremonial fisheries shall be managed by tribal regulations promulgated inseason to meet the needs of specific ceremonial events. Halibut taken for ceremonial and subsistence purposes may not be offered for sale or sold.

4.5.1 Sub allocation

Estimated by the tribes in January of each year.

4.5.2 Season structure

Begins on January 1 and continues through December 31.

4.5.3 Landing restrictions

No size or bag limits, except that when the tribal commercial fishery is closed, ~~treaty-Indian~~tribal members may take and retain not more than two halibut per day per person for subsistence purposes.

4.6 ~~Treaty Indian~~ Commercial

4.6.1 Sub allocation

Balance of quota after ceremonial and subsistence quota determined. ~~Estimated~~which is estimated by the tribes in January of each year.

4.6.2 Season structure

Tribal commercial fishery season dates will be set within the season dates determined by the IPHC and implemented in IPHC regulations. The tribal commercial fishery will close when the subquota is taken.

4.6.3 Landing restrictions

Size limit: consistent with IPHC regulations on size limits for the non-Indian fishery.

Landing limit: None unless specified.

5.0 ~~NON-INDIAN-TRIBAL~~ COMMERCIAL FISHERIES

5.1 Allocation

The non-~~Indian-tribal~~ commercial fishery is allocated 30.7 percent of the non-~~Indian-tribal~~ share of the Area 2A ~~TACFCEY, which is-~~ TACFCEY, which is approximately 19.9 percent of the total Area 2A TACFCEY. In addition, a portion of the Washington sport allocation may be ~~awarded-used~~ for the incidental catch of halibut in a commercial sablefish fishery north of Point Chehalis, WA, if the Washington sport allocation exceeds a specific level as described in section 5.8.

5.2 Area description

Within the waters of Area 2A, but may be restricted due to fishery boundaries and conservation areas.

5.3 General fishery description

Halibut may be retained from three commercial fishery structures: 1) directed halibut fishery, 2) incidental halibut catch in the salmon troll fishery, and 3) incidental halibut catch in the primary directed sablefish fishery north of Point Chehalis, WA.

5.4 Participants

Commercial fishers must choose either (1) to operate in the directed commercial fishery in Area 2A and/or retain halibut caught incidentally in the primary directed sablefish fishery north of Point Chehalis, WA; or (2) to retain halibut caught incidentally during the salmon troll fishery.

Commercial fishers wishing to operate in both the directed commercial fishery in Area 2A and/or retain halibut caught incidentally in the primary directed sablefish fishery north of Point Chehalis, WA, may not obtain a vessel license to retain halibut caught incidentally during the salmon troll season.

A salmon troller may ~~retain halibut caught incidentally during the salmon troll fishery participate in this fishery~~ or participate in the directed commercial fishery targeting halibut, but not in both.

5.5 Commercial license restrictions/declarations.

Unless otherwise required by IPHC regulations, commercial fishers must obtain an individual vessel license ~~for each commercial fishery~~: (1) to operate in the directed commercial fishery in Area 2A; or (2) to retain halibut caught incidentally in the primary sablefish fishery north of Point Chehalis, WA; or (3) to retain halibut caught incidentally during the salmon troll fishery.

Commercial fishers operating in the directed halibut fishery must send their vessel license application to the IPHC postmarked no later than April 30, or the first weekday in May, if April 30 falls on a weekend, ~~in order to obtain a vessel license to fish for halibut in Area 2A.~~

Unless otherwise required by IPHC regulations, commercial fishers operating in the salmon troll fishery or primary sablefish fishery north of Point Chehalis, WA, who seek to retain incidentally caught halibut must send their vessel license application to the IPHC postmarked no later than March 15, or the first weekday following March 15, if March 15 falls on a weekend, in order to obtain a vessel license to retain incidentally caught halibut in Area 2A.

Fishing vessels licensed by IPHC to fish commercially in Area 2A are prohibited from operating in the sport fisheries in Area 2A.

5.6 Directed Halibut Fishery

5.6.1 Sub allocation

Eighty-five percent of the non-~~Indian-tribal~~ commercial fishery allocation is allocated to the directed fishery targeting halibut (e.g., longline fishery). The allocation for this directed catch fishery is approximately 17.0 percent of the Area 2A ~~TAC/FCEY~~.

5.6.2 Geographic area

Confined to the area south of Subarea 2A-1 (south of Point Chehalis, WA; 46°53.30' N. lat.), to include southern Washington, Oregon, and California.

5.6.3 Management objective

The ~~commercial fishery~~ opening date(s), duration, and vessel trip limits will be determined by the IPHC and implemented in IPHC regulations; as necessary to ensure that the quota for the non-~~Indian-tribal~~ commercial fisheries is not exceeded; ~~will be determined by the IPHC and implemented in IPHC regulations~~.

5.6.4 Season structure

This fishery typically opens in June with a season structure; vessel trip limits based on vessel size and the sub-allocation are used to moderate catch.

5.6.5 Landing restrictions

Determined annually by IPHC, typically expressed as a vessel trip limit.

5.6.6 Inseason adjustments

If the IPHC determines that poundage remaining in the subquota for ~~the non-Indian-commercial fisheries-directed fishery~~ is insufficient to allow an additional day ~~of directed halibut fishing~~, then the remaining halibut will be made available for incidental catch of halibut in the salmon troll fisheries (independent of the incidental harvest allocation).

5.6.7 Groundfish regulations

None specified in this document.

5.6.8 Closed areas

This fishery may also be managed with closed areas designed to protect overfished groundfish species. Any such closed areas will be described annually in federal halibut regulations published in the Federal Register and the coordinates will be specifically defined at 50 CFR 660.71 through 660.74.

5.7 Incidental halibut catch in the salmon troll fishery

5.7.1 Sub allocation

Fifteen percent of the non-~~Indian-tribal~~ commercial fishery allocation is allocated to the salmon troll fishery in Area 2A as an incidental catch during salmon fisheries. The quota for this incidental catch fishery is approximately 2.9 percent of the Area 2A ~~TAC/FCEY~~.

5.7.2 Management objectives

The primary management objective for this fishery is to harvest the ~~troll~~-subquota as an incidental catch during the April-June salmon troll fishery. The secondary management objective is to harvest the remaining troll quota as an incidental catch during the remainder of the salmon troll fishery.

5.7.3 Season structure

The Council will recommend landing restrictions at its spring public meeting each year to control the amount of halibut caught incidentally in the troll fishery, so that it remains within its subquota. The commercial ocean salmon fisheries typically begin in April and continue into September, and sometimes October.

5.7.4 Landing restrictions

Determined preseason, typically on a 'per trip' basis. The landing restrictions will be based on the number of incidental harvest license applications submitted to the IPHC, halibut catch rates, the amount of allocation, and other pertinent factors, and may include catch or landing ratios, landing limits, or other means to control the rate of halibut harvest. NMFS will publish the landing restrictions annually in the *Federal Register*, along with the salmon management measures. This fishery May be subject to inseason adjustment.

5.7.5 Inseason adjustments

a. NMFS may make inseason adjustments to the landing restrictions, if requested by the Council Chair~~man~~, as necessary to assure that the incidental harvest rate is appropriate for salmon and halibut availability, does not encourage target fishing on halibut, and does not increase the likelihood of exceeding the quota for this fishery. In determining whether to make such inseason adjustments, NMFS will consult with the applicable state representative(s), a representative of the Council's Salmon Advisory Subpanel, and Council staff.

b. Notice and effectiveness of inseason adjustments will be made by NMFS in accordance with section 6.8.5.

c. Extension of fishery

If the ~~overall~~-subquota for ~~the non-Indian, incidental commercial troll~~this fishery has not been harvested ~~by salmon trollers~~ during the April-June portion of the salmon troll fishery, ~~additional landings of halibut caught incidentally during salmon troll fisheries then incidental halibut harvest~~ will be allowed in July and ~~will~~-continue until the amount of halibut that was initially available as quota for the troll fishery is taken or until the end of the season date for commercial halibut fishing determined by the IPHC and implemented in IPHC regulation (typically early October).

Landing restrictions implemented for the April-June salmon troll fishery will apply for as long as this fishery is open. Notice of the July opening of this fishery will be announced on the NMFS hotline (206) 526-6667 or (800) 662-9825.

Halibut retention in the salmon troll fishery will be allowed after June only if the opening has been announced on the NMFS hotline.

5.7.6 *Groundfish regulations*

Under the Pacific Coast groundfish regulations at 50 CFR 660.330, fishing with salmon troll gear is prohibited within the Salmon Troll Yelloweye Rockfish Conservation Area (YRCA).

5.7.7 *Closed conservation areas*

The Salmon Troll YRCA is an area off the northern Washington coast and is defined by straight lines connecting latitude and longitude coordinates. Coordinates for the Salmon Troll YRCA are specified in groundfish regulations at 50 CFR 660.70(c) and in salmon regulations at 50 CFR 660.405(c).

5.8 **Incidental halibut catch in the primary directed sablefish fishery**

5.8.1 *Sub allocation*

Dependent on the Area 2A ~~TAC~~FCEY, the primary directed sablefish fishery north of Point Chehalis will be allocated the Washington sport allocation that is in excess of 214,110 lb provided a minimum of 10,000 lb is available (i.e., the Washington sport allocation is 224,110 lb or greater). If the amount above 214,110 lb is less than 10,000 lb, then the excess will be allocated to the Washington sport subareas according to section 6.9. The amount of halibut allocated to the sablefish fishery will be shared as follows: up to 50,000 lb of halibut to the primary sablefish fishery north of Pt. Chehalis, unless the Area 2A ~~TAC~~FCEY is 1,500,000 pounds or more, then the maximum allocation is 70,000 pounds. Any remaining allocation will be distributed to the Washington sport fishery among the four subareas according to the sharing described in section 6.9.

5.8.2 *Season Structure*

The primary Sablefish fishery typically occurs annually during April 1 – October 31.

5.8.3 *Landing restrictions*

The Council will recommend landing restrictions at its spring public meeting each year to control the amount of halibut caught incidentally in this fishery. The landing restrictions will be based on the amount of the allocation and other pertinent factors, and may include catch or landing ratios, landing limits, or other means to control the rate of halibut landings. NMFS will publish the landing restrictions annually in the *Federal Register*.

The objectives for the annual landing restrictions are to attain the halibut allocation at about the same time the primary sablefish season ends (October 31), and to ensure an equitable sharing of the halibut landings among the fishers. In past years, the Council has successfully used landing restrictions to maintain the harvest within the allocation.

5.8.4 *Inseason adjustments*

None specified in this document.

5.8.5 *Groundfish regulations*

Under Pacific Coast groundfish regulations at 50 CFR 660.230, fishing with limited entry fixed gear is prohibited within the North Coast Commercial Yelloweye Rockfish Conservation Area (YRCA) and the Non-Trawl Rockfish Conservation Area (RCA).

5.8.6 Closed conservation areas

The North Coast Commercial ~~Yelloweye Rockfish Conservation Area~~ YRCA and the non-trawl RCA is an area occur off the ~~northern~~ Washington coast, ~~overlapping the northern part of North Coast Recreational YRCA. The Non-Trawl RCA is an area off the Washington coast.~~ These closed areas are defined by straight lines connecting latitude and longitude coordinates. ~~Coordinates for the North Coast Commercial YRCA are~~ specified in groundfish regulations at 50 CFR 660.70(b); ~~and Coordinates for the Non-Trawl RCA are specified in groundfish regulations at~~ 50 CFR 660.73, respectively.

6.0 SPORT FISHERIES

6.1 Allocation

~~The non-Indian-s~~ Sport fisheries (including incidental sablefish) are allocated approximately 69 percent of the non-~~Indian-tribal~~ share, which is approximately 45 percent of the Area 2A ~~TACFCEY~~. The allocation is further divided as subquotas among seven geographic subareas.

6.2 Area description

Within the waters of Area 2A, but may be restricted due to fishery boundaries and conservation areas.

6.3 General fishery description

Sport fisheries generally occur May through October annually, but seasons vary by geographic subarea.

6.4 Port of landing management

All sport fishing in Area 2A will be managed on a "port of landing" basis, whereby any halibut landed into a port will count toward the quota for the subarea in which that port is located, and the regulations governing the subarea of landing apply, regardless of the specific area of catch.

6.5 Vessel participation

Vessels operating in the sport fishery for halibut in Area 2A are prohibited from operating in the commercial halibut fishery in Area 2A during the same calendar year. Sport fishers and charter boat operators must determine, prior to May 1 of each year, whether they will operate in the commercial halibut fisheries in Area 2A which requires a commercial fishing license from the IPHC. Sport fishing for halibut in Area 2A is prohibited from a vessel licensed to fish commercially for halibut in Area 2A.

6.6 Sport fishery closure provisions

The IPHC shall determine and announce closing dates to the public for any subarea in which a subquota is estimated to have been taken. Closures are determined after consultation with Regional Administrator, NMFS West Coast Region, Chairman of the ~~Pacific Fishery Management Council~~, the IPHC Executive Director, and the Fisheries Director(s) of the affected state(s), or their designees. When ~~the IPHC has it is~~ determined that a subquota has been taken, and IPHC has announced a date on which the season will close, no person shall sport fish for halibut in that area after that date for the rest of the year, unless a reopening of that area for sport halibut fishing is scheduled by NMFS as an inseason action, or announced by the IPHC.

6.7 Possession limits

Sport possession limits:

- Washington is two daily bag limits, regardless of condition on land, but only one daily bag limit may be possessed on the vessel.
- Oregon is three daily bag limits on land, regardless of condition, but only one daily bag limit may be possessed on the vessel.
- California on land and on the vessel is one daily bag limit, regardless of condition.

6.8 Flexible inseason management provisions

6.8.1 Protocol for inseason modifications

The Regional Administrator, NMFS West Coast Region, after consultation with the Chairman of the ~~Pacific Fishery Management~~ Council, the IPHC Executive Director, and the Fisheries Director(s) of the affected state(s), or their designees, is authorized to modify regulations during the season after making the following determinations:

- a. The action is necessary to allow allocation objectives to be met.
- b. The action will not result in exceeding the catch limit for the area
- c. If any of the sport fishery subareas north of Cape Falcon, OR are not projected to utilize their respective quotas by September 30, NMFS may take inseason action to transfer any projected unused quota to another Washington sport subarea.
- d. If any of the sport fishery subareas ~~south of~~between Leadbetter Point, WA and the OR/CA border (42° N. lat.) are ~~not~~ projected to not utilize their respective quotas by their season ending dates, NMFS may take inseason action to transfer any projected unused quota to another Oregon sport subarea.
- e. Notwithstanding 6.8.1.a, if the total estimated yelloweye rockfish bycatch mortality from recreational halibut trips in all Oregon subareas is projected to exceed 22 percent of the annual Oregon recreational yelloweye rockfish harvest guideline, NMFS may take inseason action to reduce yelloweye rockfish bycatch mortality in the halibut fishery while allowing halibut allocation objectives to be met to the extent possible.

6.8.2 Notice procedures

Inseason actions taken by NMFS will be published in the *Federal Register*. Actual notice of inseason management actions will be provided by a telephone hotline administered by the West Coast Region, NMFS, at 206-526-6667 or 800-662-9825. Since provisions of these regulations may be altered by inseason actions, sport fishermen should monitor the telephone hotline for current information for the area in which they are fishing.

The inseason action will be announced by NMFS via an update to the recreational halibut hotline.

6.8.3 Effective dates

- a. Inseason actions will be effective on the date specified in the *Federal Register* notice or at the time that the action is filed for public inspection with the Office of the Federal Register, whichever is later.

- b. If time allows, NMFS will invite public comment prior to the effective date of any inseason action filed with the *Federal Register*. If the West Coast Administrator determines, for good cause, that an inseason action must be filed without affording a prior opportunity for public comment, public comments will be received for a period of 15 days after of the action in the *Federal Register*.
- c. Inseason actions will remain in effect until the stated expiration date or until rescinded, modified, or superseded. However, no inseason action has any effect beyond the end of the calendar year in which it is issued.

6.8.4 Availability of data

The West Coast Administrator will compile, in aggregate form, all data and other information relevant to the action being taken and will make them available for public review during normal office hours at the West Coast Regional Office, NMFS, Sustainable Fisheries Division, 7600 Sand Point Way NE, Seattle, WA.

6.8.5 Flexible inseason management provisions

Includes, but are not limited to, the following:

- a. Modification of sport fishing periods;
- b. Modification of sport fishing daily bag limits,
- c. Modification of sport fishing size limits;
- d. Modification of sport fishing days per calendar week;
- e. Modification of subarea quotas; and
- f. Modification of Stonewall Bank YRCA restrictions off Oregon.

6.9 Washington Coast subareas

Washington sport fisheries are allocated 35.6 percent of the total non-~~Indian-tribal TAC/FCEY~~. This allocation is shared between three subareas within the State, plus the Columbia River subarea receives a portion of this allocation, as it is in concurrent waters of Washington and Oregon.

In addition, if certain conditions are met (as described in section 5.8.1) a portion of the Washington sport fishery allocation will be distributed to the commercial primary directed sablefish fishery north of ~~point-Point~~ Chehalis, WA. The formula for distributing the Washington sport fishery allocation to the four subareas remains unchanged regardless of any distribution to the sablefish fishery.

6.9.1 Puget Sound subarea

- a. Subarea allocation
This sport fishery subarea is allocated 23.5 percent of the first 130,845 lb allocated to the Washington sport fishery, and 32 percent of the Washington sport allocation between 130,845 lb and 224,110 lb, except as provided in section 5.8.1.
- b. Geographic location

This subarea is defined as all U.S. waters east of the mouth of the Sekiu River, as defined by a line extending from 48°17.30' N. lat., 124°23.70' W. long. north to 48°24.10' N. lat., 124°23.70' W. long., including Puget Sound.

c. Management objectives

None identified in this document.

d. Season structure

Season dates will be developed by the end of November each year for the following year. Seasons will open in early May. Flexibility to open in April is allowed. Seasons may be open up to three days per week which may include at least one weekday and one weekend day. Season structure may include periodic closures to assess the remaining quota for the subarea. If sufficient quota remains, additional openings may be implemented. The fishery will continue until the quota is projected to be taken, or September 30, whichever is earlier.

e. Landing restrictions

The daily bag limit is one fish per person, with no size limit.

f. Inseason adjustments

Consistent with section 6.8.

g. Groundfish regulations

None specified in this document.

h. Closed Conservation Areas

None specified in this document.

6.9.2 *North Coast subarea*

a. Subarea allocation

This sport fishery subarea is allocated 62.2 percent of the first 130,845 lb allocated to the Washington sport fishery, and 32 percent of the Washington sport allocation between 130,845 lb and 224,110 lb, except as provided in section 5.8.1.

b. Geographic location

This subarea is defined as all U.S. waters west of the mouth of the Sekiu River, as defined above in section 6.9.1.b, and north of the Queets River (47°31.70' N. lat.).

c. Management objectives

None specified in this document.

d. Season structure

Season dates will be developed by the end of November each year for the following year. Seasons will open in early May, with the flexibility to open on April 30 in years when April 30 falls on a Thursday. Seasons may be open up to three days per week which may include at least one weekday and one weekend day. Season structure may include periodic closures to assess the remaining quota for the subarea. If sufficient quota remains, additional openings may be implemented. The fishery will continue until the quota is projected to be taken, or September 30, whichever is earlier.

e. Landing restrictions

The daily bag limit is one fish per person, with no size limit.

- f. Inseason adjustments
Consistent with section 6.8.

If the fishery is closed prior to September 30, and there is insufficient quota remaining to reopen for another fishing day, then any remaining quota may be transferred inseason to another Washington coastal subarea by NMFS via an update to the recreational halibut hotline. The daily bag limit in all fisheries is one halibut per person with no size limit.

- g. Groundfish regulations
Recreational fishing for groundfish and halibut is prohibited within the North Coast Recreational Yelloweye Rockfish Conservation Area (YRCA).

- h. Closed conservation areas
The North Coast Recreational YRCA is a C-shaped area off the northern Washington coast and is defined by straight lines connecting latitude and longitude coordinates. Coordinates for the North Coast Recreational YRCA are specified in groundfish regulations at 50 CFR 660.70(ab) and will be described annually in federal halibut regulations published in the *Federal Register*.

6.9.3 South coast subarea.

- a. Subarea allocation
This sport fishery is allocated 12.3 percent of the first 130,845 lb allocated to the Washington sport fishery, and 32 percent of the Washington sport allocation between 130,845 lb and 224,110 except as provided in section 5.8.
- b. Geographic location
This subarea is defined as waters south of the Queets River (47°31.70' N. lat.) and north of Leadbetter Point (46°38.17' N. lat.).

The nearshore fishery takes place in the area from 47°31.70' N. lat. south to 46°58.00' N. lat. and east of a boundary line approximating the 30 fathom depth contour as defined by the following coordinates:

47°31.70' N. lat., 124°37.03' W. long.;
47°25.67' N. lat., 124°34.79' W. long.;
47°12.82' N. lat., 124°29.12' W. long.; and
46°58.00' N. lat., 124°24.24' W. long.

- c. Management objectives
The south coast subarea quota will be allocated to the all-depth (primary) fishery, with a nearshore fishery to be open if sufficient quota remains.
- d. Season structure
Season dates for the primary fishery will be developed by the end of November each year for the following year. The primary seasons will open in early May, with the flexibility to open on April 30 in years when April 30 falls on a Thursday. Seasons may be open up to three days per week which may include at least one weekday and one weekend day. Season structure may include periodic closures to assess the remaining quota for the subarea. If sufficient quota remains, additional openings may be implemented. If there is insufficient

quota remaining to reopen the primary fishery for another fishing day, the remaining primary fishery quota will be used to open a nearshore fishery.

e. Landing restrictions

The daily bag limit is one halibut per person, with no size limit.

f. Inseason adjustments

Consistent with section 6.8.

If sufficient quota remains, the nearshore fishery will open the first Saturday subsequent to the closure of the primary fishery and will be open seven days per week until the remaining quota is projected to be taken.

If the fishery is closed prior to September 30, and there is insufficient quota remaining to reopen the nearshore areas for another fishing day, then any remaining quota may be transferred inseason to another Washington coastal subarea by NMFS via an update to the recreational halibut hotline.

g. Groundfish regulations

During days open to the primary fishery and seaward of the 30-fm line lingcod may be taken, retained and possessed, when allowed by groundfish regulations.

Recreational fishing for groundfish and halibut is prohibited within two YRCA's off Washington's southern coast.

h. Closed conservation areas

The South Coast Recreational YRCA and the Westport Offshore YRCA are defined by straight lines connecting latitude and longitude coordinates. Coordinates for these Recreational YRCAs are specified in groundfish regulations at 50 CFR 660.70 (de) and (ef) and will be described annually in federal halibut regulations published in the Federal Register.

6.10 Columbia River Subarea

a. Subarea allocation

This sport fishery subarea is allocated 2.0 percent of the first 130,845 lb allocated to the Washington sport fishery, and 4.0 percent of the Washington sport allocation between 130,845 lb and 224,110 lb, except as provided in section 5.8. This subarea is also allocated 2.3 percent of the Oregon sport allocation, and any allocation over 8,000 lbs from the Southern Oregon Subarea.

A nearshore fishery is allocated 500 pounds of the Columbia River subarea allocation. The remaining Columbia River subarea allocation will be allocated to the all-depth fishery.

b. Geographic location

This subarea is defined as waters south of Leadbetter Point, WA (46°38.17' N. lat.) and north of Cape Falcon, OR (45°46.00' N. lat.).

The nearshore area is described as the area shoreward of the boundary line approximating the 30 fathom (55 m) depth contour extending from Leadbetter Point, WA (46°38.17' N. lat., 124°15.88' W. long.) to the Washington-Oregon border (46°16.00' N. lat., 124°15.88'

W. long.) and from there, connecting to the boundary line approximating the 40 fathom (73 m) depth contour in Oregon. Coordinates will be specifically defined at 50 CFR 660.71 through 660.74.

c. Management objectives

This subarea typically has both an all-depth (primary) fishery and a nearshore fishery. The nearshore fishery is to allow incidental halibut retention on groundfish trips in the specific area described in section [6.10.a](#).

d. Season structure

The all-depth fishery will begin in May, with the flexibility to open on April 30 in years when April 30 falls on a Thursday. Open dates will be determined after consultation between Oregon and Washington Departments of Fish and Wildlife, and in time for Council final action at the November meeting. The fishery will be open up to three days per week, Thursday or Friday, and/or Sunday until the subarea allocation is taken, or until September 30, whichever is earlier.

The nearshore fishery will be open Monday through Wednesday following the opening of the all-depth fishery, until the nearshore allocation is taken or September 30, whichever is earlier. Taking, retaining, possessing or landing halibut on groundfish trips is only allowed in the nearshore area on days not open to all-depth Pacific halibut fisheries.

e. Landing restrictions

The daily bag limit is one halibut per person, with no size limit.

f. Inseason adjustments

Consistent with section 6.8.

Subsequent to the all-depth fishery closure, if there is insufficient quota remaining in the Columbia River subarea for another fishing day, then any remaining quota may be transferred inseason to another Washington and/or Oregon subarea by NMFS via an update to the recreational halibut hotline.

Any remaining quota would be transferred to each state in proportion to its contribution.

g. Groundfish regulations

No groundfish may be taken and retained, possessed or landed when halibut are on board the vessel with the following exceptions. When allowed by groundfish regulations sablefish, Pacific cod, flatfish species may be retained, and lingcod caught north of the Washington-Oregon border (46°16.00' N. lat.) may be retained during the recreational halibut fishery.

h. Closed conservation areas

None identified in this document.

6.11 Oregon Coast Subarea

Oregon sport fisheries are allocated 29.7 percent of the total non-~~Indian-tribal~~ [FCEYTAC](#). This allocation is distributed to two subareas within the state, plus the Columbia River subarea.

6.11.1 Oregon central coast subarea

a. Subarea allocation

This sport fishery subarea is allocated 93.79 percent of the Oregon sport allocation. Portions (subquotas) of this subarea allocation are distributed to certain fisheries within this subarea based on the amount of the overall Area 2A FCEYTAC as described in sections 6.11.1.c and 6.11.1.d.

b. Geographic location

This subarea extends from Cape Falcon (45°46.00' N. lat.) to Humbug Mountain, Oregon (42°40.50' N. lat.).

Nearshore waters are inside the 40-fathom (73 m) curve.

c. Management objectives

If the overall 2A FCEYTAC is 700,000 pounds or greater, the structuring objectives for this subarea are to provide two periods of fishing opportunity in Spring and in Summer in productive deeper water areas along the coast, and provide a period of fishing opportunity in the summer for nearshore waters.

If the overall 2A FCEYTAC is less than 700,000 pounds, the structuring objectives for this subarea are to provide a period of fishing opportunity beginning in Spring in productive deeper water areas along the coast and provide a period of fishing opportunity in nearshore waters.

If the 2A FCEYTAC exceeds 700,000 pounds, any poundage that is not needed to extend the inside 40-fathom (73 m) fishery through October 31 will be added to the Summer all-depth season if it can be used, and any poundage remaining unharvested from the Summer all-depth fishery will be added to the inside 40-fathom (73 m) fishery subquota, if it can be used.

d. Season structure

There three general seasons for this subarea - nearshore, spring all-depth and summer all-depth.

i. Nearshore

The first season (nearshore fishery) opens June 1, 7 days per week, only in waters inside the 40-fathom (73 m) curve, unless the subquota is 25,000 lbs or greater, then it opens May 1. The fishery continues until the subquota is taken, or until October 31, whichever is earlier and is allocated 12 percent of the subarea quota if the 2A FCEYTAC is 700,000 pounds or greater, or 25 percent of the subarea quota if the 2A FCEYTAC is less than 700,000 pounds.

Any overage in the all-depth fisheries would not affect achievement of allocation set aside for the inside 40-fathom (73 m) curve fishery.

ii. Spring all-depth

The second season (Spring fishery) is an all-depth fishery with two potential openings and is allocated 63 percent of the subarea quota if the FCEYTAC is 700,000 pounds or greater, or 75 percent of the subarea quota if the 2A FCEYTAC is less than 700,000 pounds.

ODFW will sponsor a public input process shortly after the IPHC annual meeting to develop recommendations to NMFS on the open dates for each season each year.

“Fixed” season dates will be established preseason for the first Spring opening and will not be modified inseason except if the combined Oregon all-depth Spring and Summer season total quotas are estimated to be achieved. Recent year catch rates will be used as a guideline for estimating the catch rate for the Spring fishery each year. The number of fixed season days established will be based on the projected catch per day with the intent of not exceeding the subarea subquota for this season.

The first opening will be structured for 2 days per week (Friday and Saturday) if the season is for 4 or fewer fishing days. The fishery will be structured for 3 days per week (Thursday through Saturday) if the season is for 5 or more fishing days. The fixed season dates will occur in consecutive weeks starting the second Thursday in May (if the season is 5 or more fishing days) or second Friday in May (if the season is 4 or fewer fishing days), with possible exceptions to avoid adverse tidal conditions.

If, following the “fixed” dates, quota for this season remains unharvested, a second opening will be held. If it is determined appropriate through joint consultation between IPHC, NMFS, PFMC, and ODFW, fishing may be allowed on one or more additional days. Notice of the opening(s) will be announced by NMFS via an update to the recreational halibut hotline.

The fishery will then be open every other week on Thursday through Saturday except that week(s) may be skipped to avoid adverse tidal conditions. The potential open Thursdays through Saturdays will be identified preseason.

The fishery will continue until there is insufficient quota for an additional day of fishing or July 31, whichever is earlier if the 2A ~~FCEYTAC~~ is 700,000 pounds (317.5 mt) or greater.

If the 2A ~~FCEYTAC~~ is less than 700,000 pounds (317.5 mt) the fishery will continue until there is insufficient quota for an additional day of fishing or October 31, whichever is earlier.

iii. Summer all-depth

The last season (Summer fishery) is an all-depth fishery that begins on the first Friday in August and is allocated 25 percent of the subarea quota if the 2A ~~FCEYTAC~~ is 700,000 pounds (317.5 mt) or greater. If the 2A ~~FCEYTAC~~ is less than 700,000 pounds (317.5 mt) then ~~0-zero~~ percent of the subarea quota will be allocated to this season.

The fishery will be structured to be open every other week on Friday and Saturday except that week(s) may be skipped to avoid adverse tidal conditions, if the subquota is less than 60,000 lbs. If the subquota is 60,000 lbs or greater, the fishery will be structured to be open every other week on Thursday, Friday, and Saturday except that week(s) may be skipped to avoid adverse tidal conditions. The fishery will continue until there is insufficient quota remaining to reopen for another fishing day or October 31, whichever is earlier.

The potential open (Thursdays if quota), Fridays and Saturdays will be identified preseason.

If after the first scheduled open period, the remaining Cape Falcon to Humbug Mountain entire season quota (combined all-depth and inside 40-fathom (73 m) quotas) is 60,000 lb (27.2 mt) or more, the fishery will re-open on every (Thursday if quota) Friday and Saturday (versus every other Friday and Saturday), if determined to be appropriate through joint consultation between IPHC, NMFS, PFMC, and ODFW. ~~The inseason action will be announced by NMFS via an update to the recreational halibut hotline.~~

If after the Labor Day weekend the remaining Cape Falcon to Humbug Mountain entire season quota (combined all-depth and inside 40-fathom (73 m) quotas) is 30,000 lb (13.6 mt) or more and the fishery is not already open every (Thursday if quota) Friday and Saturday, the fishery will re-open on every (Thursday if quota) Friday and Saturday (versus every other Friday and Saturday), if determined to be appropriate through joint consultation between IPHC, NMFS, PFMC, and ODFW.

After the Labor Day weekend, the IPHC, NMFS, PFMC, and ODFW will consult to determine whether increasing the Oregon Central Coast bag limit to two fish is warranted with the intent that the quota for the subarea is taken by September 30. If the quota is not taken by September 30, the season will remain open, maintaining the bag limit in effect at that time, through October 31 or quota attainment, whichever is earlier.

~~The All~~ inseason actions will be announced by NMFS via an update to the recreational halibut hotline.

e. Landing restrictions

The daily bag limit is one halibut per person, unless otherwise specified, with no size limit.

f. Inseason adjustments

Consistent with sections 6.8, 6.11.1.c, and 6.11.1.d.

If inseason it is determined via joint consultation between IPHC, NMFS, PFMC, and ODFW, that the combined all-depth and inside 40-fathom (73 m) fisheries will not harvest the entire quota to the subarea, quota may be transferred inseason to another subarea ~~south of~~ between Leadbetter Point, WA and the OR/CA border by NMFS via an update to the recreational halibut hotline.

g. Groundfish regulations

During days open to all-depth halibut fishing when the groundfish fishery is restricted by depth, no groundfish may be taken and retained, possessed or landed, except sablefish, Pacific cod and flatfish species when allowed by groundfish regulations, if halibut are on board the vessel. During days open to all-depth halibut fishing when the groundfish fishery is open to all depths, any groundfish species permitted under the groundfish regulations may be retained, possessed or landed if halibut are on aboard the vessel. During days open to nearshore halibut fishing, flatfish species may be taken and retained seaward of the seasonal groundfish depths restrictions, if halibut are on board the vessel.

h. Closed conservation areas

Recreational fishing for groundfish and halibut is prohibited within the Stonewall Bank YRCA. The Stonewall Bank YRCA is an area off central Oregon, near Stonewall Bank, and is defined by straight lines connecting latitude and longitude coordinates. Coordinates for the Stonewall Bank YRCA are specified in groundfish regulations at 50 CFR 660.70 (fh) and will be described annually in federal halibut regulations published in the *Federal Register*.

6.11.2 Southern Oregon subarea

a. Subarea allocation

This sport fishery is allocated 3.91 percent of the Oregon sport allocation, up to a maximum of 8,000 pounds. Any allocation over that amount will be re-allocated to the Columbia River Subarea.

b. Geographic location

This area is defined as the area south of Humbug Mountain, OR (42° 40.50' N. lat.) to the ~~Oregon/California~~OR/CA Border (42° 00.00' N. lat.).

c. Management objectives

None identified in this document.

d. Season structure

This fishery will open May 1, seven days per week until the subquota is taken or October 31, whichever is earlier.

e. Landing restrictions

The daily bag limit is one halibut per person with no size limit.

f. Inseason adjustments

Consistent with section 6.8.

g. Groundfish regulations

No groundfish may be taken and retained, possessed or landed, except sablefish, Pacific cod, and flatfish species, in areas closed to groundfish, if halibut are on board the vessel.

h. Closed conservation areas

None identified in this document.

6.12 California Coast

California sport fisheries are allocated 4.0 percent of the total non-~~Indian-tribal FCEYTAC~~, which is distributed along the entire California coast. Based on the subarea quota, and considering stakeholder input, the California Department of Fish and Wildlife (CDFW) will provide recommendations to NMFS each year as soon as possible following the determination of the Area 2A ~~FCEYTAC~~ on the opening date and other closure dates, such as closed weeks or months that would apply during the fishing season that year.

a. Subarea allocation

This sport fishery subarea is allocated 4.0 percent of the non-Indian allocation

b. Geographic location

This area is defined as the area south of the ~~Oregon/California~~OR/CA Border (42° 00.00' N. lat.), including all California waters.

- c. Management objectives
None identified in this document.
- d. Season structure
The fishery will be structured to provide recreational fishing opportunity seven days per week, from May 1 until the quota is projected to be taken, or until October 31, whichever is earlier. Additional closed periods during this season, such as closed weeks or months and including a later opening date, may be established preseason by NMFS based on the subarea quota and projected catch.
- e. Landing restrictions
The daily bag limit is one halibut per person, with no size limit.
- f. Inseason adjustments
Consistent with section 6.8.
Closure of the fishery or other inseason adjustments will be made by NMFS via an update to the recreational halibut hotline.
- g. Groundfish regulations
None identified in this document.
- h. Closed conservation areas
None identified in this document.

7.0 PROCEDURES FOR IMPLEMENTATION

Each year, NMFS will publish a proposed rule with any regulatory modifications necessary to implement the Plan for the following year, with a request for public comments. The comment period will extend until after the IPHC annual meeting, so that the public will have the opportunity to consider the final Area 2A ~~FCEYTAC~~ before submitting comments. After the Area 2A ~~FCEYTAC~~ is known, and after NMFS reviews public comments, NMFS will implement final rules governing the sport fisheries. The final ratio of halibut to Chinook to be allowed as incidental catch in the salmon troll fishery will be published with the annual salmon management measures.

Sources:

<i>85 FR 25317 (May 1, 2020)</i>	<i>71 FR 10850 (March 3, 2006)</i>
<i>84 FR 17960 (April 29, 2019)</i>	<i>70 FR 20304 (April 19, 2005)</i>
<i>83 FR 13090 (March 26, 2018)</i>	<i>69 FR 24524 (May 4, 2004)</i>
<i>82 FR 18581 (April 20, 2017)</i>	<i>68 FR 10989 (March 7, 2003)</i>
<i>81 FR 18789 (April 1, 2016)</i>	<i>67 FR 12885 (March 20, 2002)</i>
<i>80 FR 17344 (April 1, 2015)</i>	<i>66 FR 15801 (March 21, 2001)</i>
<i>79 FR 18827 (April 4, 2014)</i>	<i>65 FR 14909 (March 20, 2000)</i>
<i>78 FR 16423 (March 15, 2013)</i>	<i>64 FR 13519 (March 19, 1999)</i>
<i>77 FR 16740 (March 22, 2012)</i>	<i>63 FR 13000 (March 17, 1998)</i>
<i>76 FR 14300 (March 16, 2011)</i>	<i>62 FR 12759 (March 18, 1997)</i>
<i>75 FR 13024 (March 18, 2010)</i>	<i>61 FR 11337 (March 20, 1996)</i>
<i>74 FR 11681 (March 19, 2009)</i>	<i>60 FR 14651 (March 20, 1995)</i>
<i>73 FR 12280 (March 7, 2008)</i>	<i>59 FR 22522 (May 2, 1994)</i>
<i>72 FR 11792 (March 14, 2007)</i>	<i>58 FR 17791 (April 6, 1993)</i>