

PFMC - SAMTAAC MEETING MAY 21-22, 2019

- Wifi Login
- Meeting@Sheraton
- Username: 05pdxsi
- Password: 05pdxsi

SAMTAAC CHARGE

Identifying obstacles to achieving the goals and objectives of the catch share plan related to **under attainment of non-sablefish trawl allocations and unharvested sablefish quota pounds (QP) south of 36° N. latitude.** As appropriate to overcome identified obstacles, the committee will discuss and develop options, including but not limited to, actions that may modify rules for gear switching by trawl permit holders and QP leasing to vessels using fixed gear, as well as options that may encourage increased utilization of sablefish QPs south of 36° N. latitude.



AGENDA ITEM D.1

SUMMARY OF RECENT FISHERY CONDITIONS



SABLEFISH ATTAINMENT IN IFQ FISHERY, 2011-2018

Area		2011	2012	2013	2014	2015	2016	2017	2018
North	Allocation	5.61	5.44	4.03	4.38	4.85	5.32	5.33	5.56
	Total Avail.	5.61	5.44	4.29	4.52	5.05	5.46	5.64	5.67
	QP Used	5.29	4.93	4.08	4.15	4.86	5.07	5.57	5.09
	% Attain.	94%	91%	101%	95%	100%	95%	105%	91%
	Unused QP	0.32	0.51	-0.05	0.23	-0.01	0.25	-0.25	0.47
South	Allocation	1.17	1.13	1.33	1.44	1.59	1.74	1.72	1.80
	Total Avail.	1.17	1.13	1.43	1.57	1.72	1.89	1.86	1.90
	QP Used	1.01	0.50	0.20	0.45	0.37	0.45	0.25	0.10
	% Attain.	86%	44%	15%	32%	24%	26%	14%	6%
	Unused QP	0.16	0.63	1.13	0.99	1.21	1.29	1.47	1.70

Allocations and QPs Used/Unused in Millions of Lbs

SHOREBASED IFQ UTILIZATION- BY GEAR

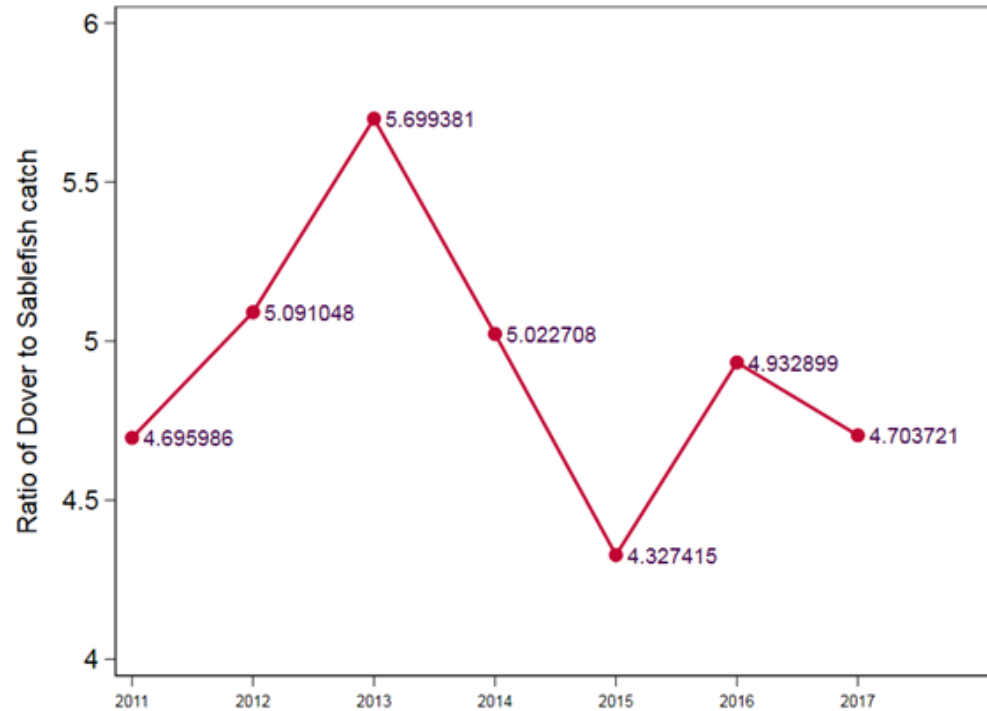
Stock		2011	2012	2013	2014	2015	2016	2017	2018	
North	Allocation	5.61	5.44	4.03	4.38	4.85	5.32	5.33	5.56	
	Fixed Gear	Lbs	1.51	1.63	0.96	1.25	1.55	1.78	1.87	1.79
		Percent	27%	30%	24%	29%	32%	33%	35%	32%
	Trawl	Lbs	3.74	3.25	3.08	2.84	3.23	3.18	3.61	3.21
		Percent	67%	60%	77%	65%	67%	60%	68%	58%
South	Allocation	1.17	1.13	1.33	1.44	1.59	1.74	1.72	1.80	
	Fixed Gear	Lbs	0.95	0.44	0.18	0.42	0.34	0.42	0.24	0.10
		Percent	81%	39%	13%	29%	22%	24%	14%	
	Trawl	Lbs	0.04	0.05	0.01	0.01	0.01	0.01	0.002	5.4%
		Percent	3.2%	4.4%	1.0%	1.0%	0.8%	0.6%	0.1%	

Allocations and QPs in Millions of Lbs

SABLEFISH AVERAGE PRICE

Area	Gear	2011	2012	2013	2014	2015	2016	2017	2018
North	Fixed gear	3.53	2.49	2.31	2.68	2.74	3.07	3.06	2.28
	Trawl	2.51	1.78	1.59	1.98	2.02	2.05	1.93	1.30
South	All	2.26	2.07	1.96	2.48	2.87	2.21	2.34	1.74

UPDATED CATCH SHARES ANALYSIS



Species	Catch Shares Document (2015)		Updated Analysis (2015-2017)	
	Actual Utilization	Hypothetical	Actual Utilization	Hypothetical
Dover sole	13.1	16.2	15.0	17.9
Longspine Thornyhead	23	31.6	25.6	37.5
Shortspine Thornyhead	41.5	48.6	45.6	54.4



AGENDA ITEM E.1

SUMMARY OF ALTERNATIVES



ACTION ALTERNATIVE SUMMARY:

TABLE 14, P. 33

	Alt 1	Alt 2	Alt 3	Alt 4	Alt 5
Spp Scope	Southern Sablefish				
S to N Shift	X	X			
Mechanism	Reapportion	South A South B			

ACTION ALTERNATIVE SUMMARY:

TABLE 14, P. 33

	Alt 1	Alt 2	Alt 3	Alt 4	Alt 5
Spp Scope	Southern Sablefish				
S to N Shift	X	X			
Mechanism	Reapportion	South A South B			
Geographic Scope	Expands North Sablefish QP	South B Used North to OR/CA Border			
Gears	Trawl or Fixed Gear	South B – Trawl Only			

ACTION ALTERNATIVE SUMMARY:

TABLE 14, P. 33

	Alt 1	Alt 2	Alt 3	Alt 4	Alt 5
Spp Scope	Southern Sablefish				
S to N Shift	X	X			
Mechanism	Reapportion	South A South B			
Geographic Scope	Expands North Sablefish QP	South B Used North to OR/CA Border			
Gears	Trawl or Fixed Gear	South B – Trawl Only			
Process	Periodic, Based S. Sablef Use				
Key Issue	ACL and Allocation Issues				

ACTION ALTERNATIVE SUMMARY:

TABLE 14, P. 33

	Alt 1	Alt 2	Alt 3	Alt 4	Alt 5
Spp Scope	Southern Sablefish		North. Sablefish	Northern Sablefish & ???	
S to N Shift	X	X			
Gear Specific QP			Trawl Only & Status Quo (Any Gear)		
Sunset Options			Gear Specific QP		

ACTION ALTERNATIVE SUMMARY:

TABLE 14, P. 33

	Alt 1	Alt 2	Alt 3	Alt 4	Alt 5
Spp Scope	Southern Sablefish		North. Sablefish	Northern Sablefish & ???	
S to N Shift	X	X			
Gear Specific QP			X		
			Gear Specific QP		

ACTION ALTERNATIVE SUMMARY:

TABLE 14, P. 33

	Alt 1	Alt 2	Alt 3	Alt 4	Alt 5
Spp Scope	Southern Sablefish		North. Sablefish	Northern Sablefish & ???	
S to N Shift	X	X			
Gear Specific QP			X		
Gear Switch Prohib & Exceptions:				X	X
<i>Active Trawl Designation</i>				X	
<i>Fixed Gear Exemption</i>				X	
<i>Gear Switch End</i>					X
			Gear Specific QP		

ACTION ALTERNATIVE SUMMARY:

TABLE 14, P. 33

	Alt 1	Alt 2	Alt 3	Alt 4	Alt 5
Spp Scope	Southern Sablefish		North. Sablefish	Northern Sablefish & ???	
S to N Shift	X	X			
Gear Specific QP			X		
Gear Switch Prohib & Exceptions:				X	X
<i>Active Trawl Designation</i>				X	
<i>Fixed Gear Exemption</i>				X	
<i>Gear Switch End</i>					X
Annual GS Limit				Different for Active Trawl Des. & Fixed Gear Exempt.	4.5%
Sunset Options			Gear Specific QP		

ACTION ALTERNATIVE SUMMARY:

TABLE 14, P. 33

	Alt 1	Alt 2	Alt 3	Alt 4	Alt 5
Spp Scope	Southern Sablefish		North. Sablefish	Northern Sablefish & ???	
S to N Shift	X	X			
Gear Specific QP			X		
Gear Switch Prohib & Exceptions:				X	X
<i>Active Trawl Designation</i>				X	
<i>Fixed Gear Exemption</i>				X	
<i>Gear Switch End</i>					X
Annual GS Limit				Different for Active Trawl Des. & Fixed Gear Exempt.	4.5%
Sunset Options			Gear Specific QP	Fixed Gear Ex.	

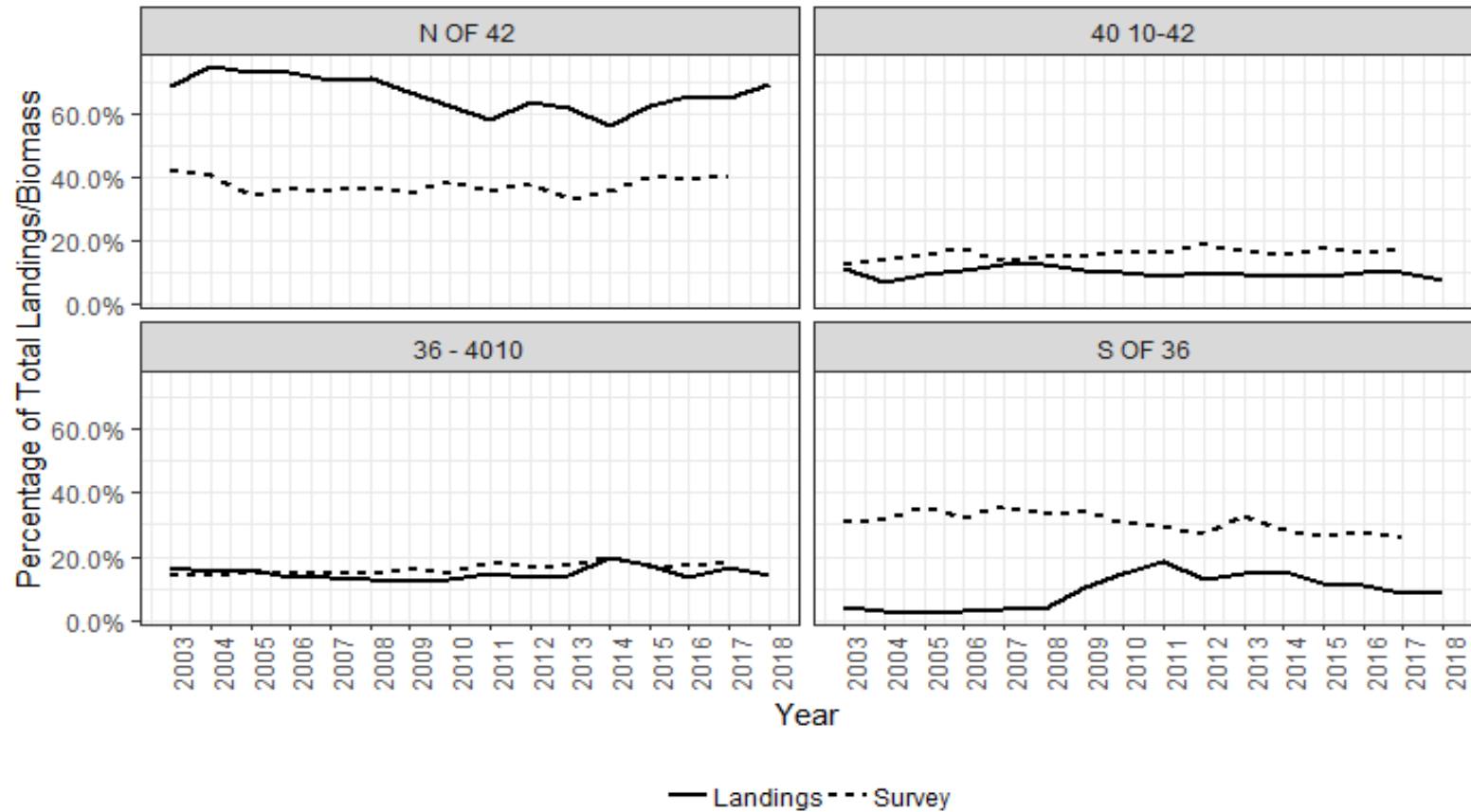


AGENDA ITEM F.1

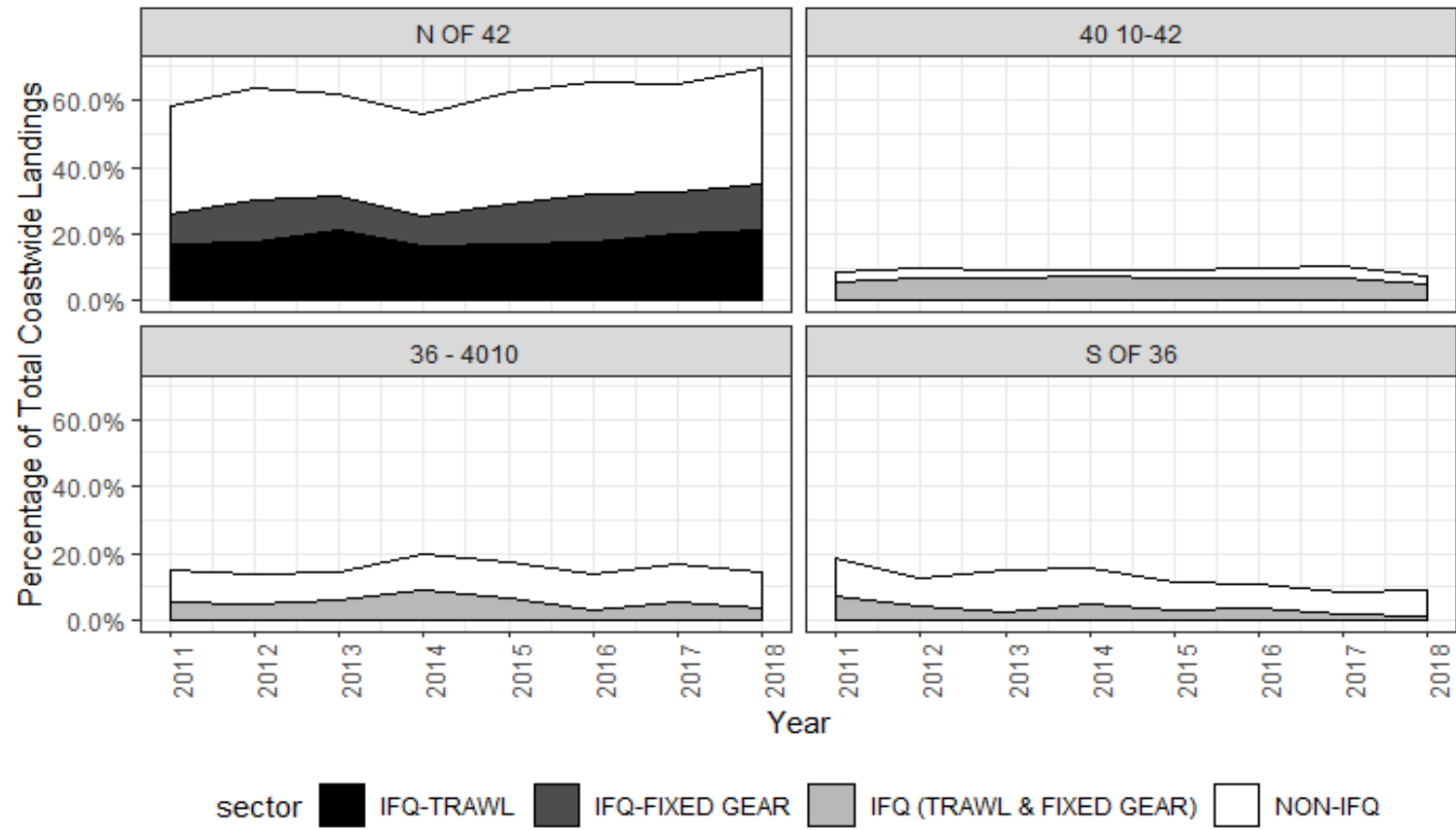
ALTERNATIVE ANALYSIS



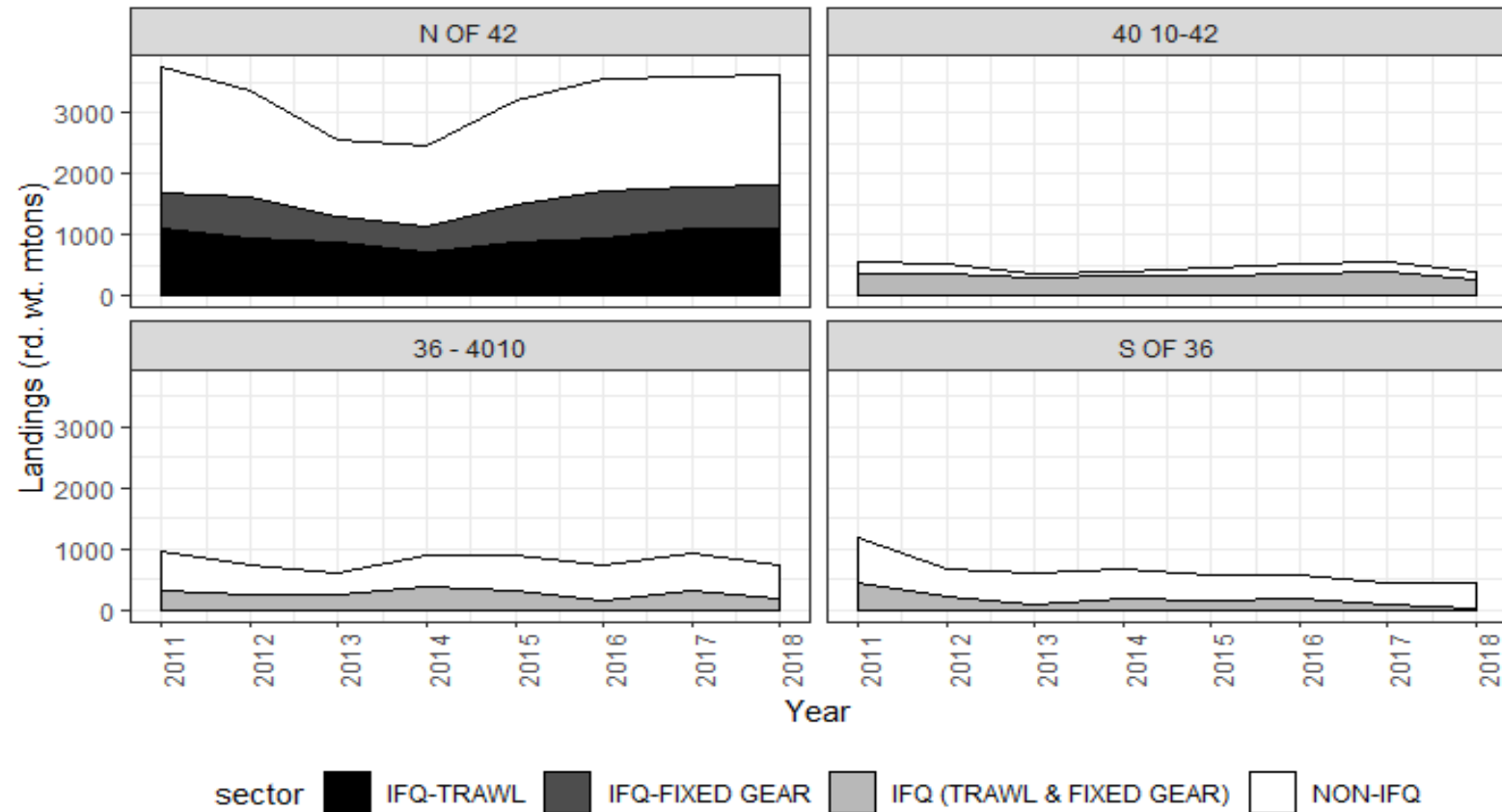
COASTWIDE HARVEST



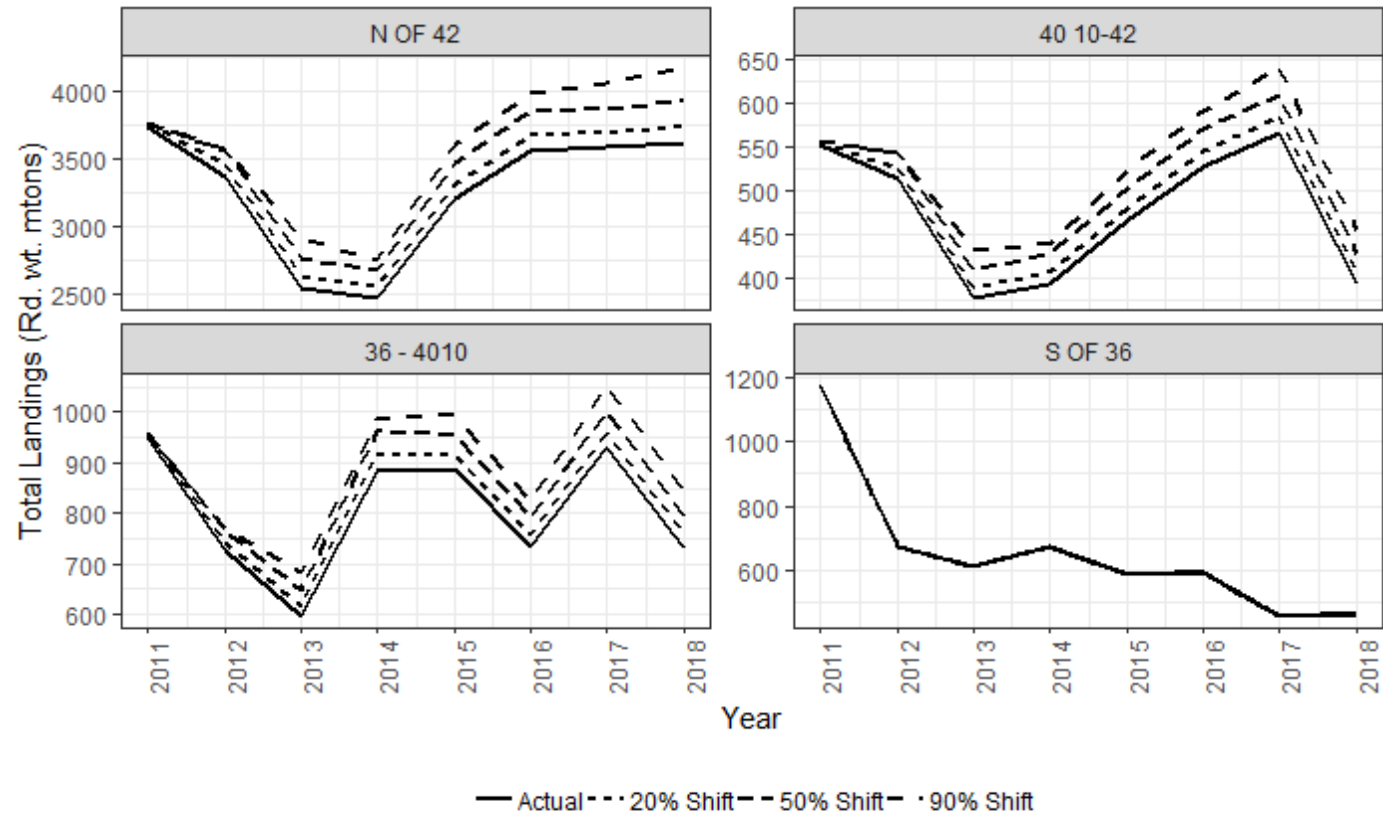
COASTWIDE HARVEST BY SECTOR



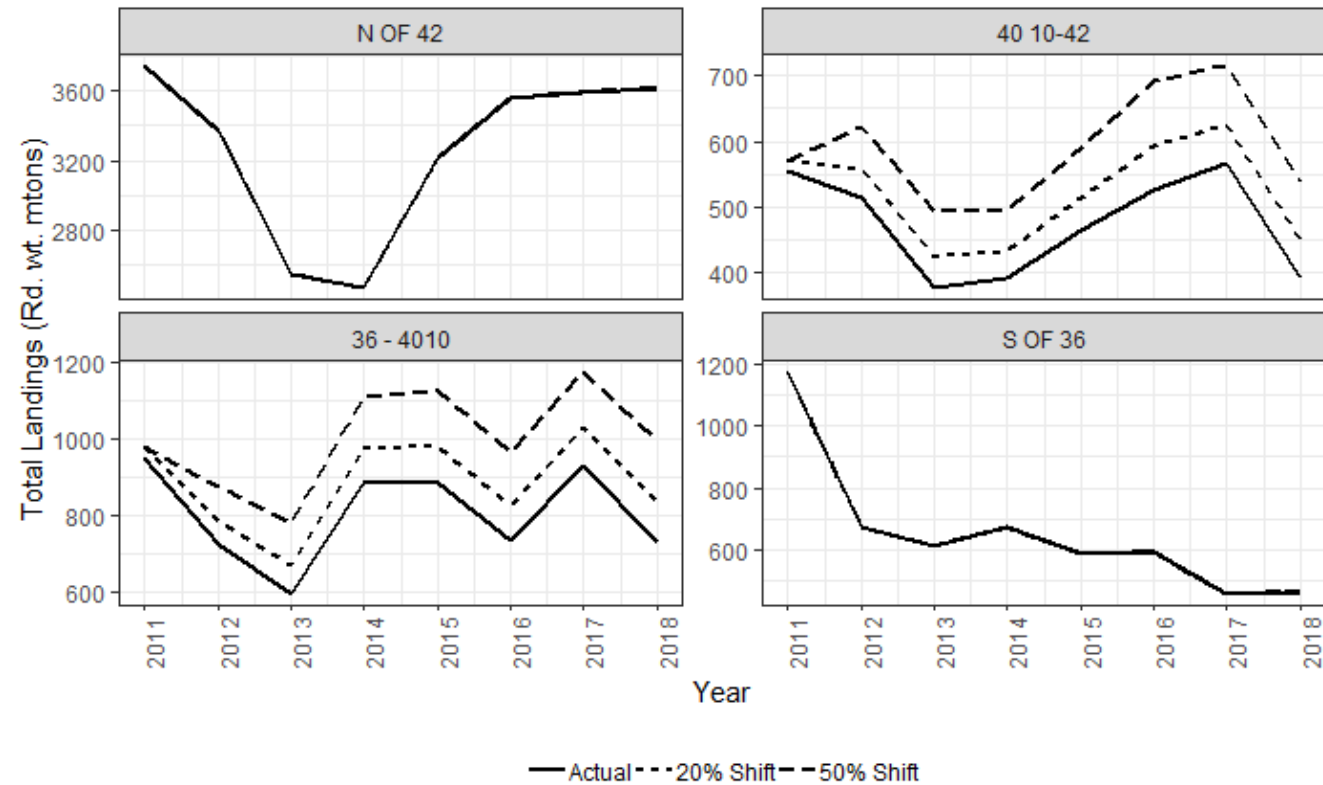
COASTWIDE HARVEST BY SECTOR



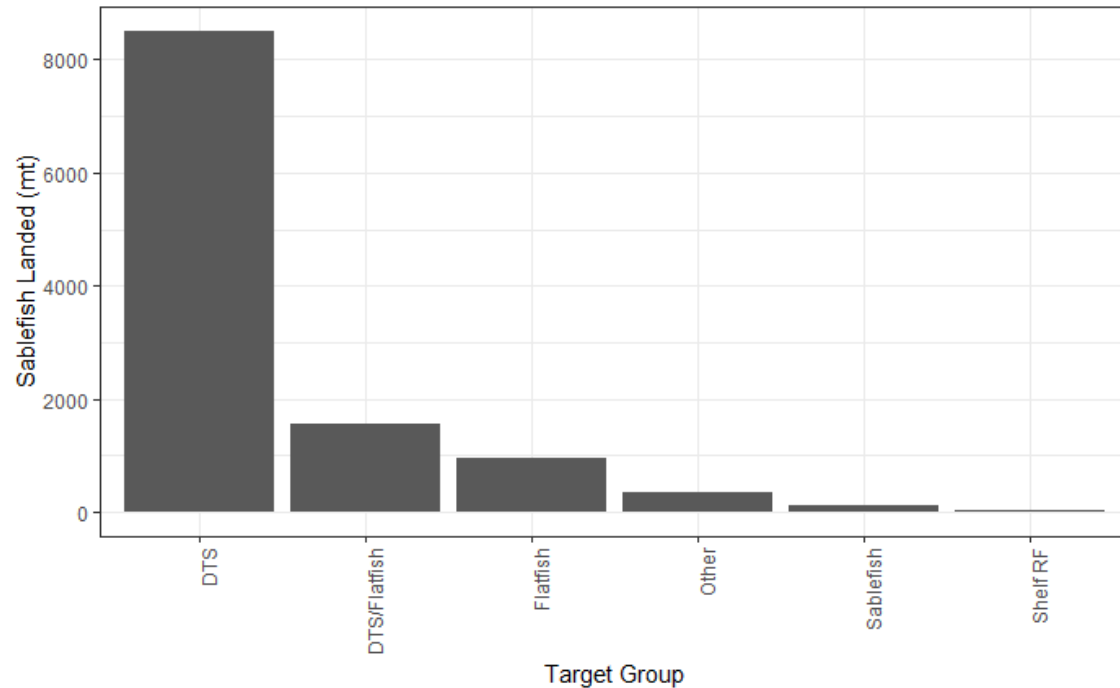
ALTERNATIVE I - RETROSPECTIVE HYPOTHETICAL SHIFT



ALTERNATIVE 2- RETROSPECTIVE HYPOTHETICAL SHIFT

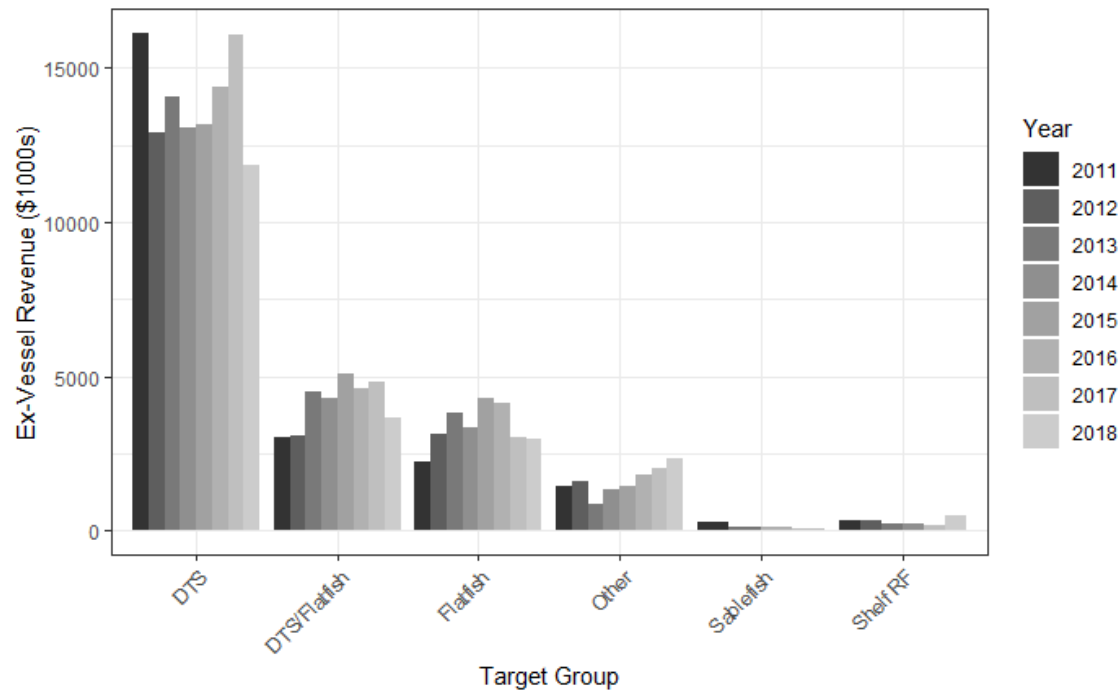


NON-WHITING TRAWL STRATEGIES



- Compared PacFIN landings vs. WCGOP logbook targets
- DTS targeted trips- 49-67 % of the non-whiting trawl trips each year
- Yet, sablefish only comprises about 9-12% of total landings on DTS trips

NON-WHITING TRAWL STRATEGIES

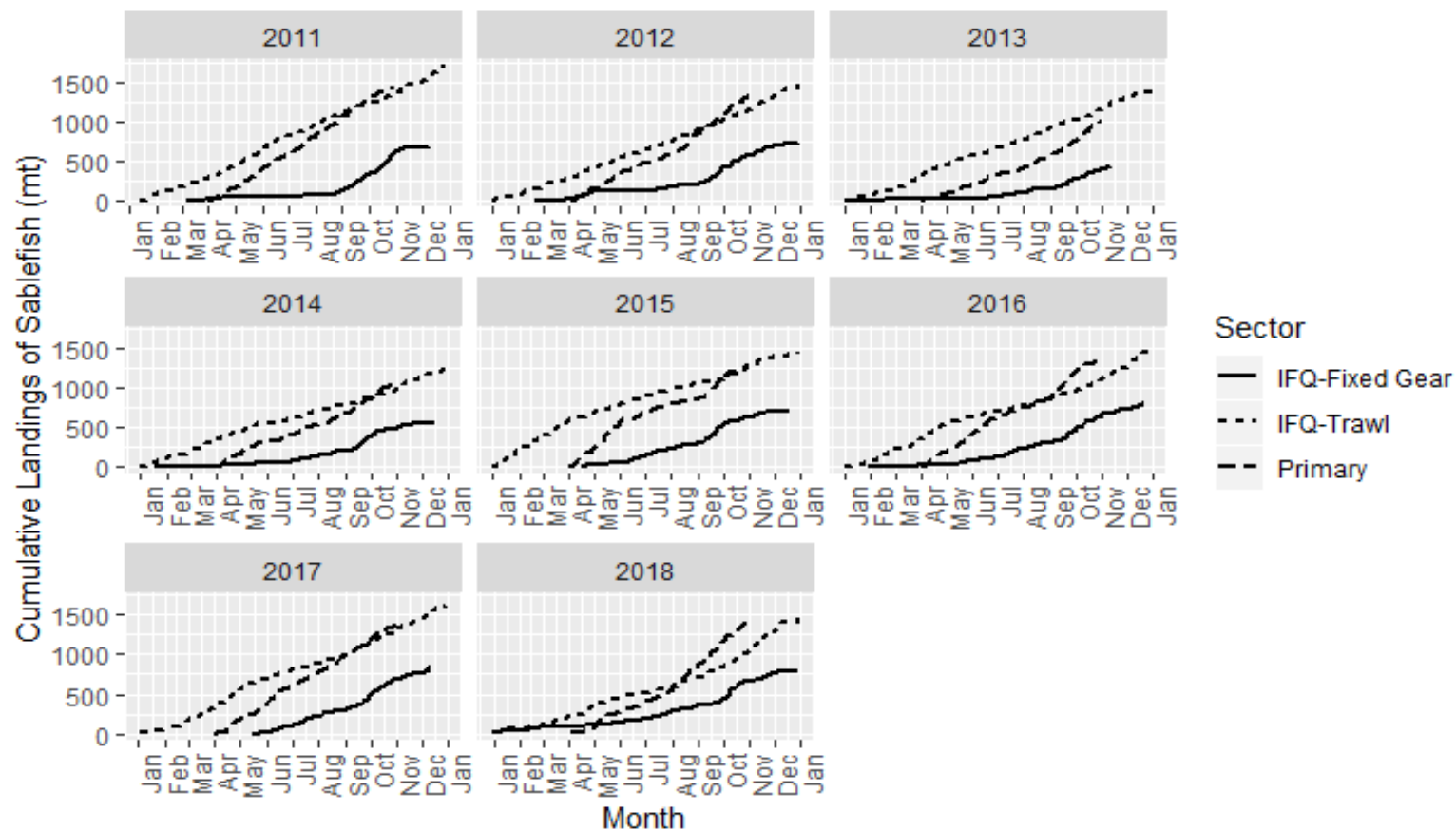


- DTS trips range from \$12 million in ex-vessel revenue in 2018 to high of \$16.1 million in 2011
- Sablefish accounts for 25-44% of DTS revenue

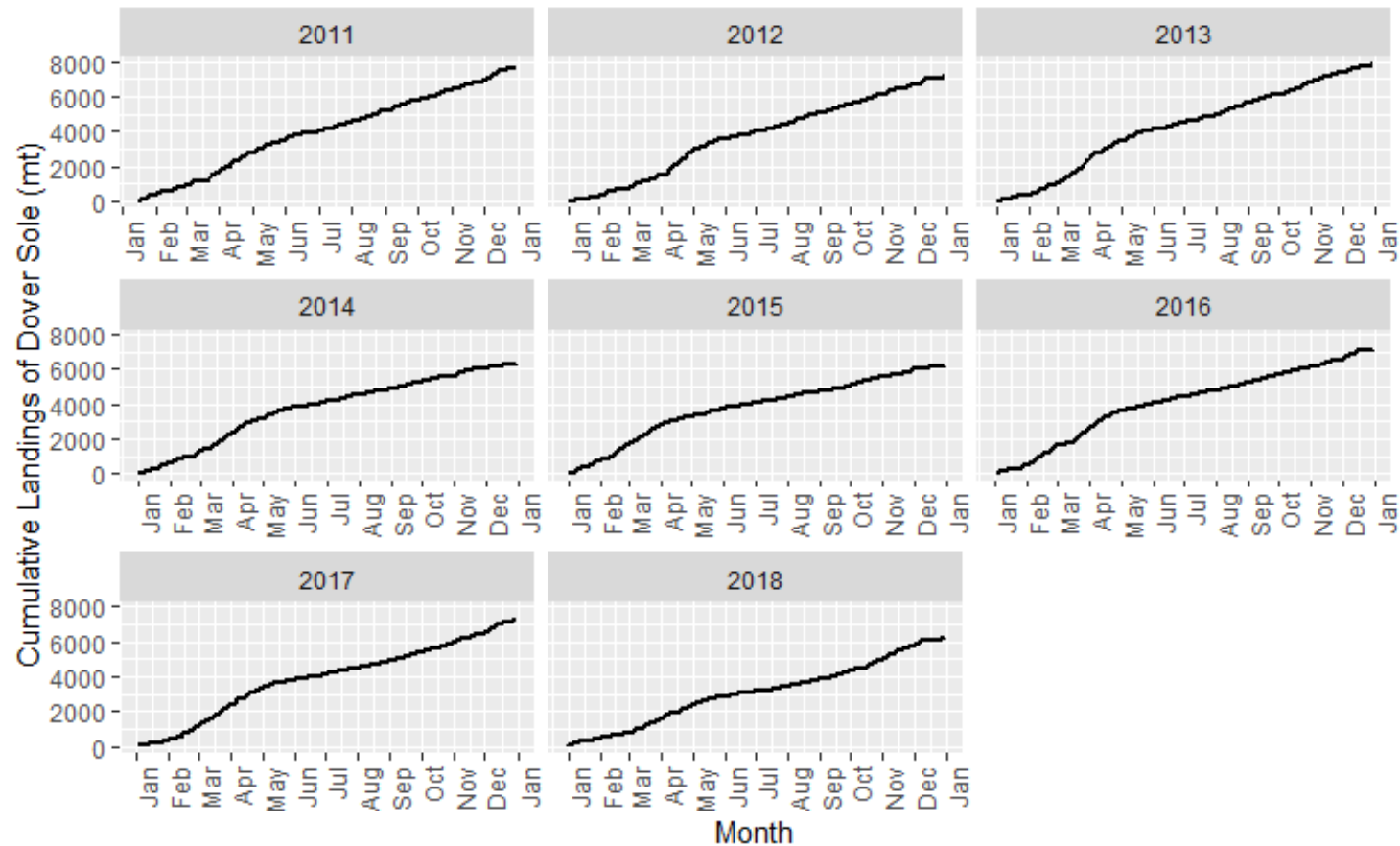
NON-SABLEFISH GEAR SWITCHING

Year	Non-Sablefish Landings (rd. wt. mtons)	Non-Sablefish Landings (as percent of total gear switched landings)	Sablefish Landings (rd. wt. mtons)	Number of Gear Switching Vessels
2011	38.80	3.4%	1112.58	26
2012	47.09	4.8%	934.46	25
2013	34.52	6.3%	516.07	19
2014	25.18	3.2%	756.54	22
2015	29.50	3.3%	852.99	18
2016	36.87	3.6%	988.44	20
2017	26.98	2.8%	949.11	19
2018	46.26	5.1%	856.04	17

SABLEFISH N OF 36 CUMULATIVE CATCH



DOVER SOLE CUMULATIVE CATCHES



ALLOCATING PRIVILEGES (ALT 3, 4 AND 5)

- MSA –
 - Fair and Equitable
 - Current and Historic Harvests and Participation
 - Employment
 - Investment and Dependence
- Council Limited Entry Policies
 - License Limitation – Vessel History
 - Fixed Gear Sablefish
 - Endorsements – Permit History
 - Tiers – Permit History
 - Trawl Rationalization
 - Permit History and Equal Allocation
 - 20% of Pacific Whiting QS to Processors
 - 10% of Non-whiting QS to Adaptive Mngmt

INVESTMENT AND HISTORY:

VESSELS AND LIMITED ENTRY PERMITS (LEPS)

Vessel Transfers (of 36 GS Ves)

- 7 Vessels Transferred
- 5 Vessels and Permit Transferred Together

LEP Transfers (of 39 GS LEPS)

- 13 LEP Transfers
- 11 LEPS Involved

INVESTMENT AND HISTORY: VESSELS AND LIMITED ENTRY PERMITS (LEPS)

Vessel Transfers (of 36 GS Ves)

- 7 Vessels Transferred
- 5 Vessels and Permit Transferred Together

LEP Transfers (of 39 GS LEPs)

- 13 LEP Transfers
- 11 LEPs Involved

Consider the following section indicators of what can be produced

Sections 8.3, 8.4, and 8.5

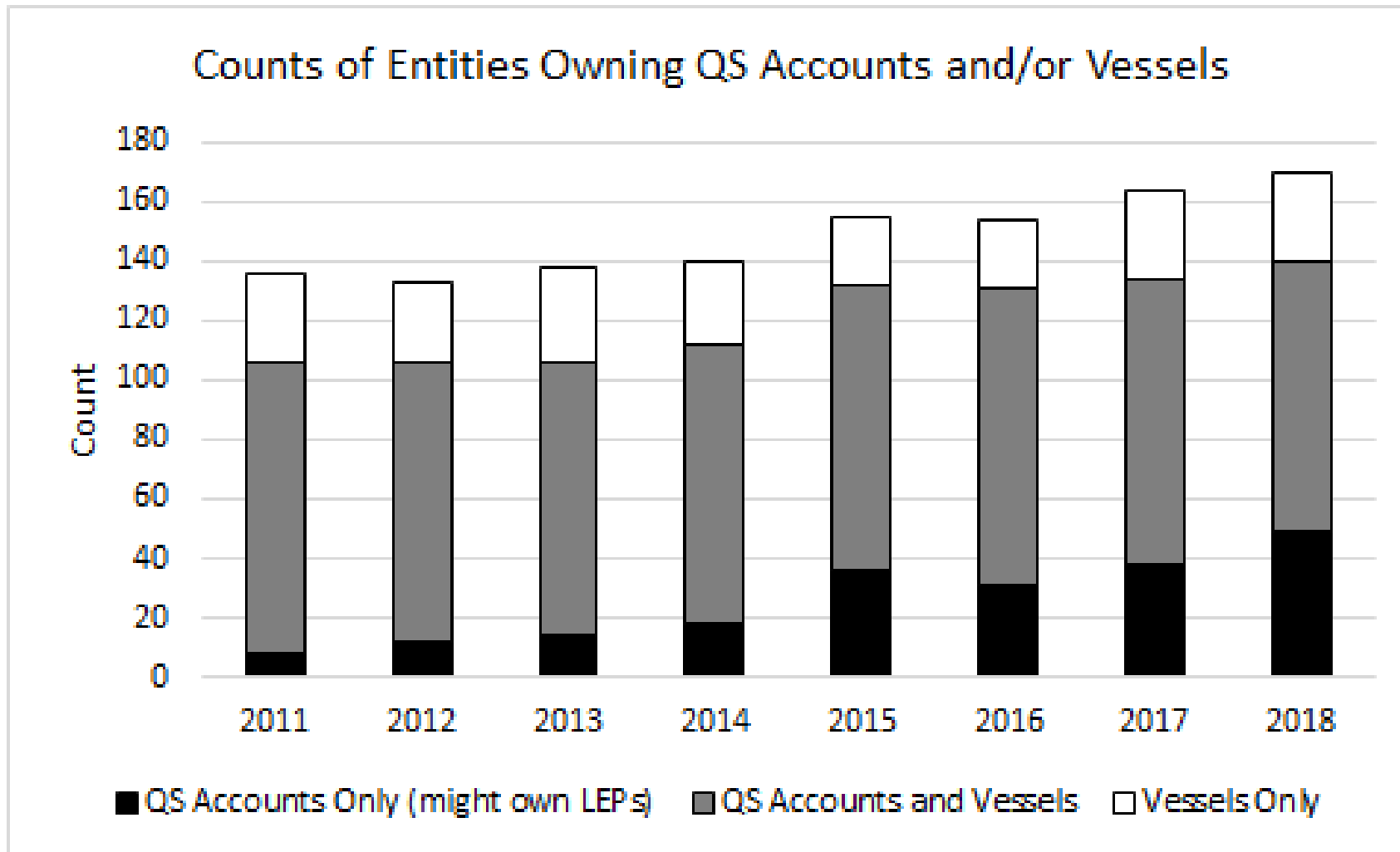
Section 12.1.2(c)(1)

INVESTMENT AND HISTORY:

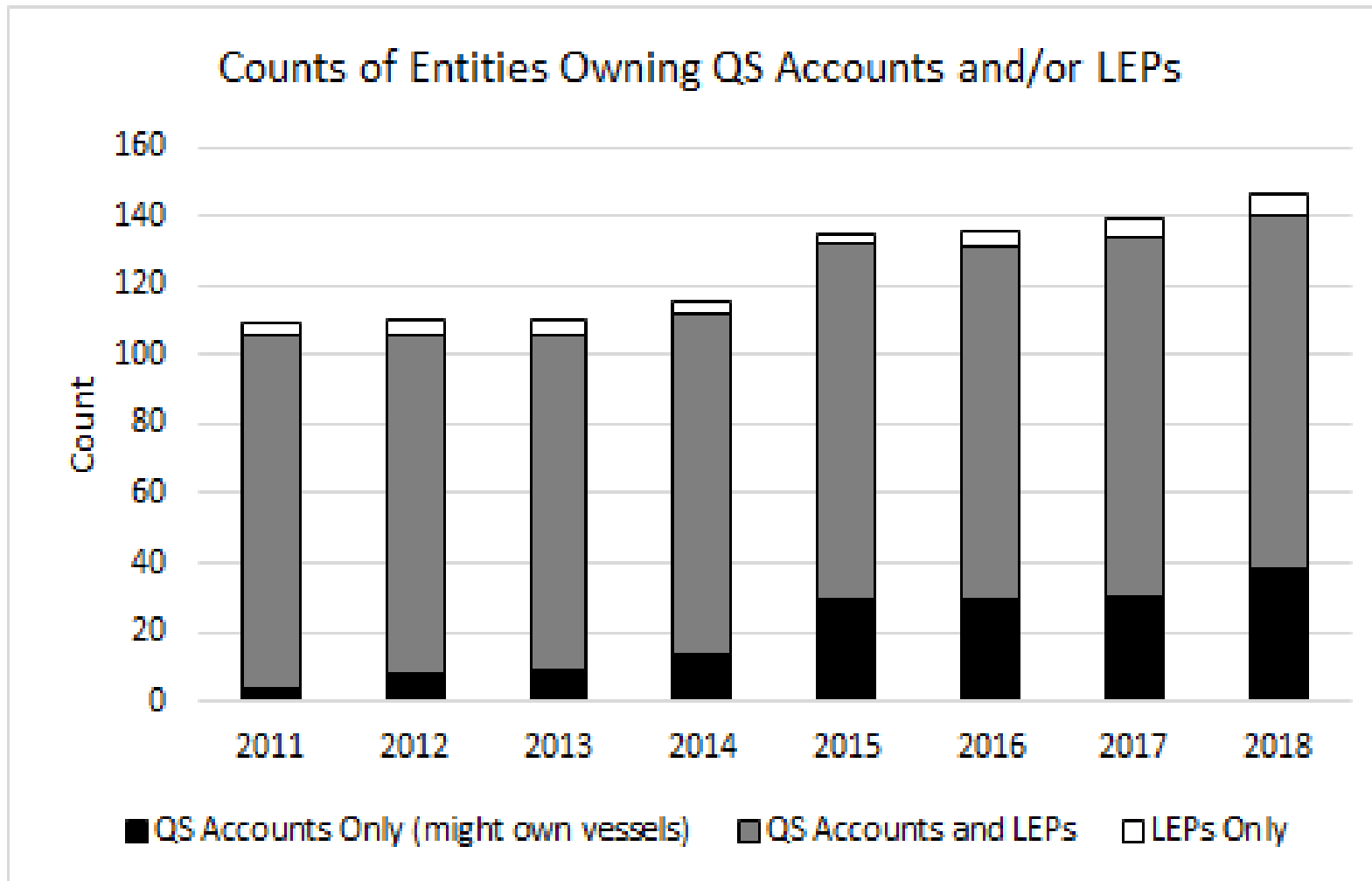
QS ACCOUNTS

- 29 gear switching entities have QS accounts, of which
 - 23 entities have held at least one account continuously since 2011
 - 5 have held at least one account continuously since first acquired (after 2010)
 - 3 have reduced or eliminated their accounts
- Entities gear switching at least once hold an average of 23.3 % northern sablefish QS.
- In any given year, the amount of QS held by entities gear switching in the year varies between 6% and 14.1%

ENTITIES OWNING QS ACCOUNTS AND/OR VESSELS



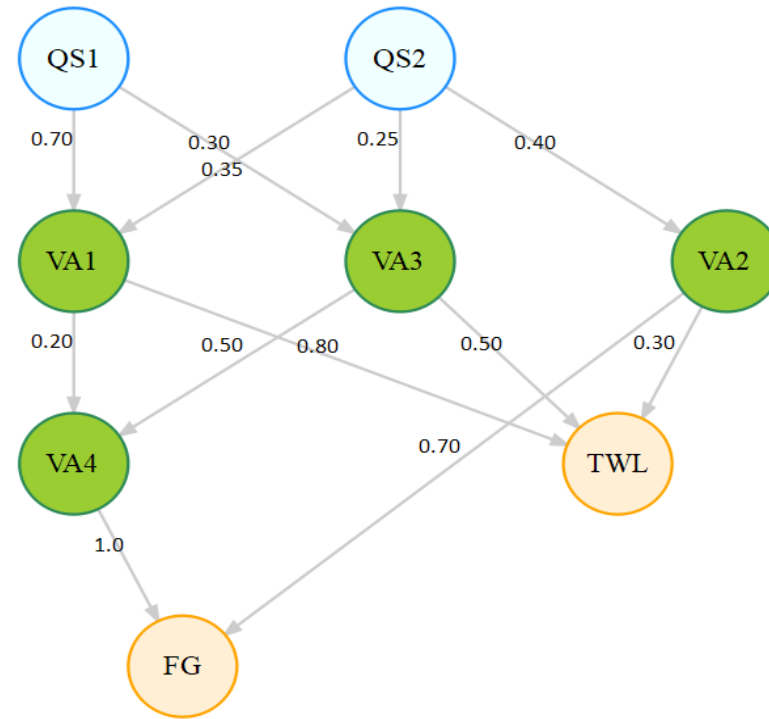
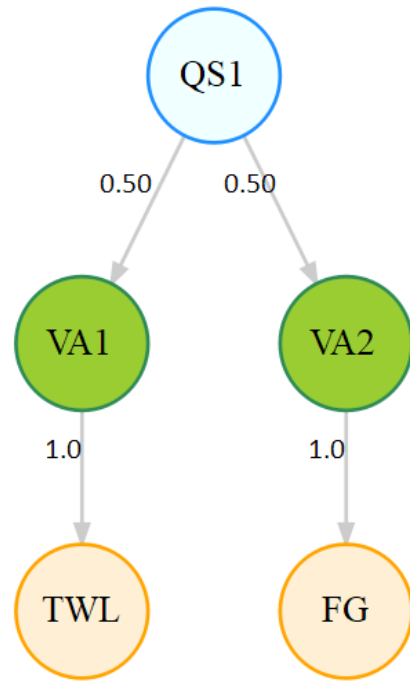
ENTITIES OWNING QS ACCOUNTS AND/OR LEPs



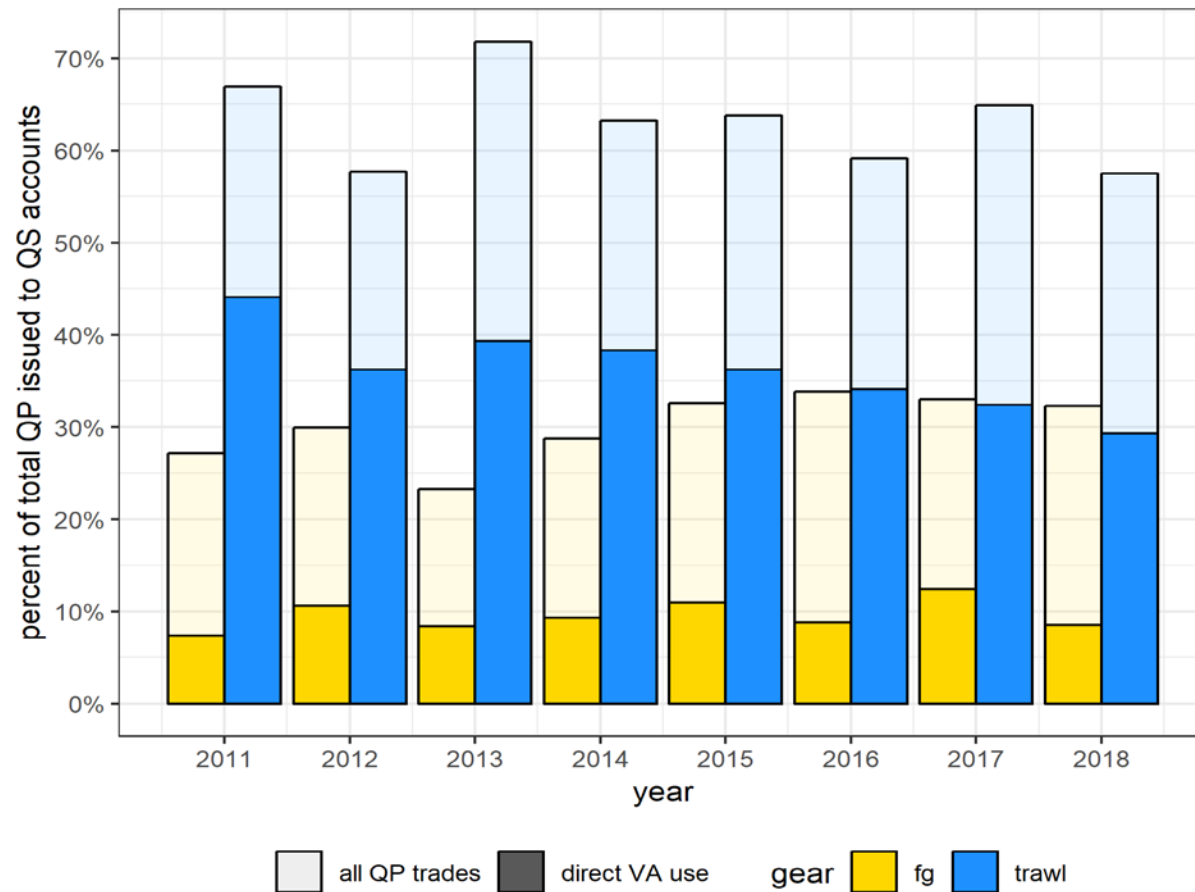
OWNING QS ACCOUNTS, LEPs AND VESSELS

Evaluated on an Annual Basis	2011	2012	2013	2014	2015	2016	2017	2018
Entities with QS Accounts	106	106	106	112	132	131	134	140
Entities with QS Accounts, Vessels and LEPs	98	94	92	94	95	97	93	86
Entities with QS Accounts but No Vessel or LEP	4	8	9	13	28	26	27	33
Percent of Entities with QS Accounts but no Vessel or LEP	4%	8%	8%	12%	21%	20%	20%	24%

WDFW PROPOSED METHOD



RESULTS OF ANALYSIS



GEAR SWITCHING ACTIVITY-VESSELS

Number of Years	1	2	3	4	5	6	7	8
Number of Vessels	15	9	0	4	4		3	4

Year	2011	2012	2013	2014	2015	2016	2017	2018
Number of Vessels	17	20	11	15	14	16	16	16

GEAR SWITCHING ACTIVITY- PERMITS

Number of Years	1	2	3	4	5	6	7
Number of Permits	20	9	4	4	6		5

Year	2011	2012	2013	2014	2015	2016	2017	2018
Number of Permits	20	23	13	15	14	16	17	18

VESSEL-PERMIT INTERACTIONS

Permits	Vessels
1	28
2	6
3+	5



ADDITIONAL ANALYSIS/INFORMATION



DOVER AND THORNYHEAD IFQ ALLOCATIONS (MT)

Species	2015	2016	2017	2018	2019
Dover sole	45,981	45,981	45,981	45,981	45,979
Longspine N of 34° 27'	2,962	2,815	2,700	2,560	2,420
Shortspine N of 34° 27'	1,581	1,563	1,551	1,537	1,507

DOVER AND THORNYHEAD IFQ ATTAINMENT

Species		2015	2016	2017	2018
Dover Sole	Allocation	101.4	101.4	101.4	101.4
	QPs Used	13.8	15.9	16.2	14.1
	% Attain.	14%	16%	16%	14%
Longspine	Allocation	6.5	6.2	6.0	5.6
Thornyhead N of 34 27	QPs Used	1.7	1.5	1.8	0.8
	% Attain.	26%	23%	30%	14%
Shortspine	Allocation	3.5	3.4	3.4	3.4
Thornyhead N of 34 27	QPs Used	1.6	1.6	1.6	1.4
	% Attain.	45%	48%	48%	42%

Allocations and QPs Used in Millions of Lbs

DEALERS WHO BOUGHT SOUTHERN SABLEFISH

Year	2011	2012	2013	2014	2015	2016	2017	2018
IFQ	14	8	3	4	4		4	
Non-IFQ	47	41	40	36	42	42	46	62

VESSELS

Year	2011	2012	2013	2014	2015	2016	2017	2018
Number of Vessels	13	10	7	8	7	7	8	3