

Agenda Item I.9
Supplemental Staff Presentation 1
September 2018

Omnibus Workload Planning Process: Background

Pacific Fisheries Management Council
Hilton Hotel Seattle Airport
18740 International Blvd.
Seattle, WA
September 11, 2018



Overview

- **Background: Process Revision**
- **Council Operating Procedure 9**
- **Omnibus**
- **Council Action**



Background:

Groundfish Management Process Revision

- **2005: Change from annual to biennial management**
- **2010: Identified biennial process needed revision**
- **Process Improvements Committee (PIC) convened**
 - **Develop optimal management activities cycle**
 - **Explore long-term solutions to groundfish management process**
- **PIC recommendations**
 - **Streamline workload via dividing management activity process**
 - **Define what are new and routine management measures**
 - **Create a better project prioritization process**
- **Council Operating Procedure 9 Revised November 2013.**

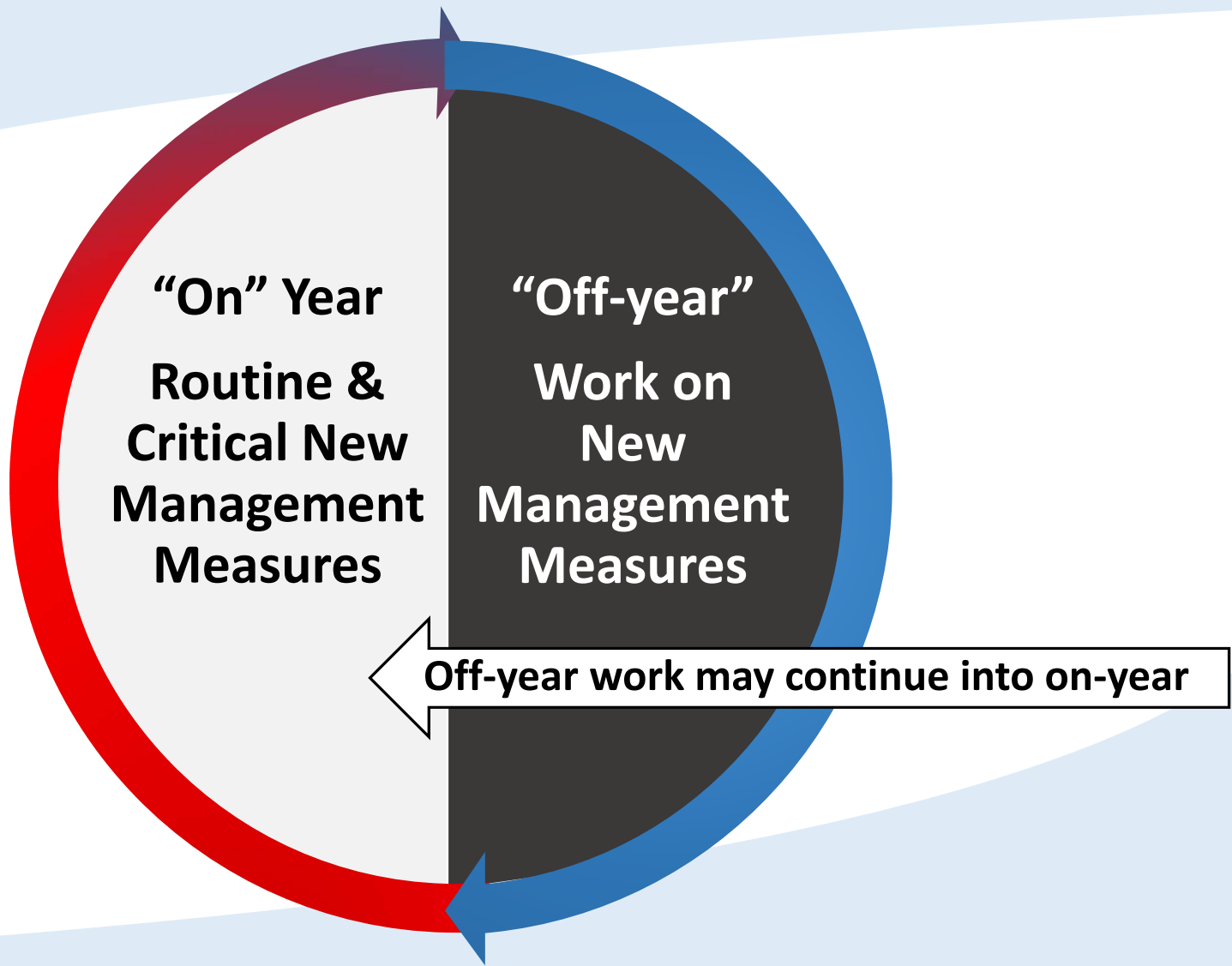


Council Operating Procedure (COP) 9 Management Activity Cycle: Groundfish

- **Designed for January implementation of biennial harvest specifications**
- **Divides Council groundfish management activity timeline**
 - **On-year for routine & critical new management measures**
 - **Off-year for other new management measures**
- **Includes Omnibus process**



COP 9 Biennial Management Activity Cycle



Off-Year Management Activities

- FPA Management Measures
- Final Action EFPs
- Omnibus Prioritization Process

- Off-year Priority Projects
- Pacific Whiting Management Measures Recommendations

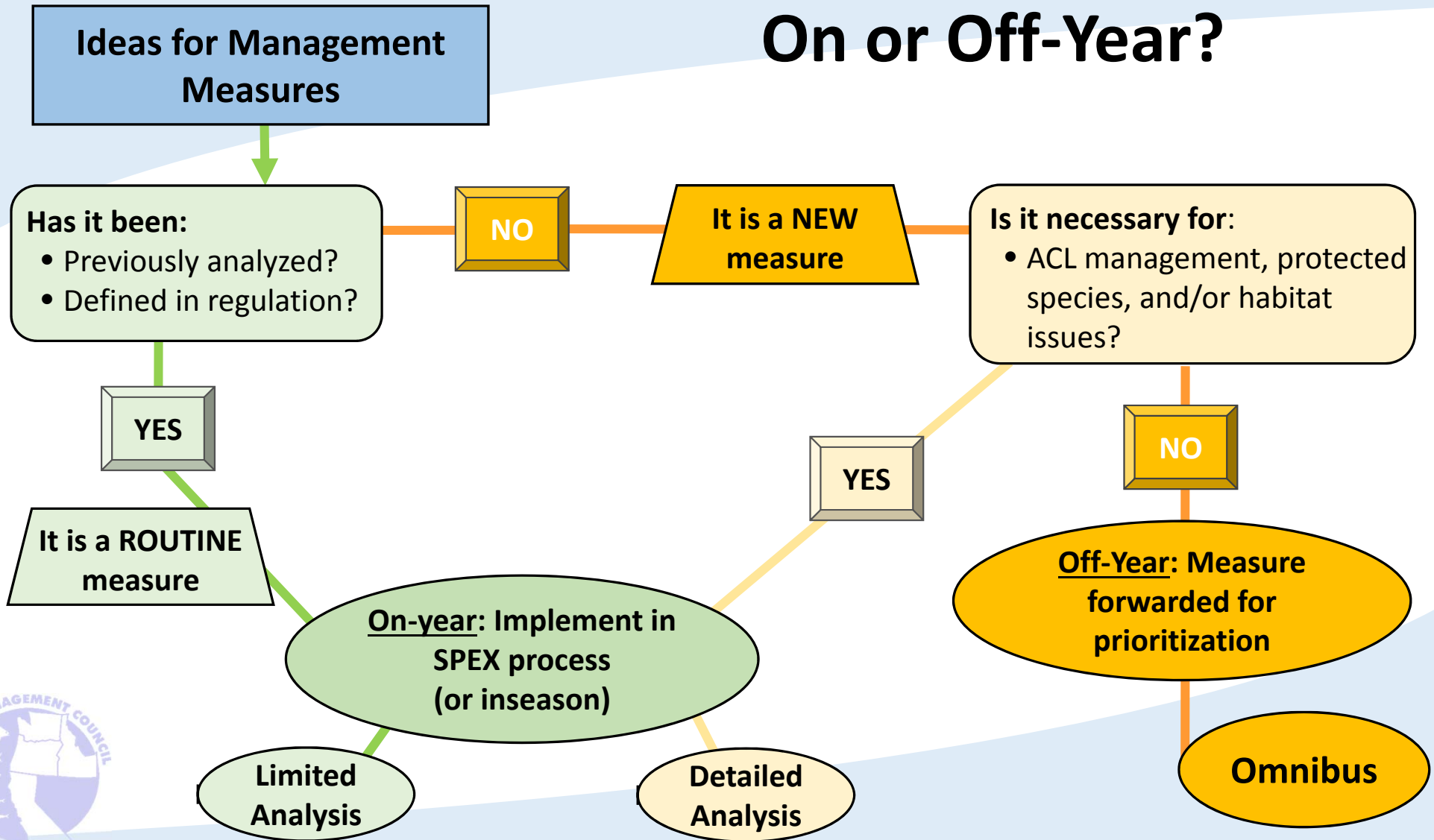


- Off-year Priorities Projects

- Off-year prioritized work completed (or continued as appropriate)
- On-year Process Begins



On or Off-Year?



Omnibus Prioritization Process

- **Opportunity for Council:**
 - **Prioritize new groundfish issues for investigation**
 - **Adopt schedule for Council decision process**
 - **Manage workload, in the context of all groundfish related work**



Previous Omnibus Considerations

Actions In Implementation Phase
19-20 Spex
Other Past Council Actions to be Implemented
Law Suits
Ongoing EFP Work

Existing PFMC Commitment
Inseason Mgmt
Pacific Halibut CSP & Regs
EFH Review and RCAs
ESA Issues
Ecosystem Issues (FEP & CA Current)
Harvest Policy Deliberations
Stock Assess Meth & Work
Whiting Spex & Set Asides
Completion of Past New Mgmt Measure Priorities: Cost Recovery, EM, etc.

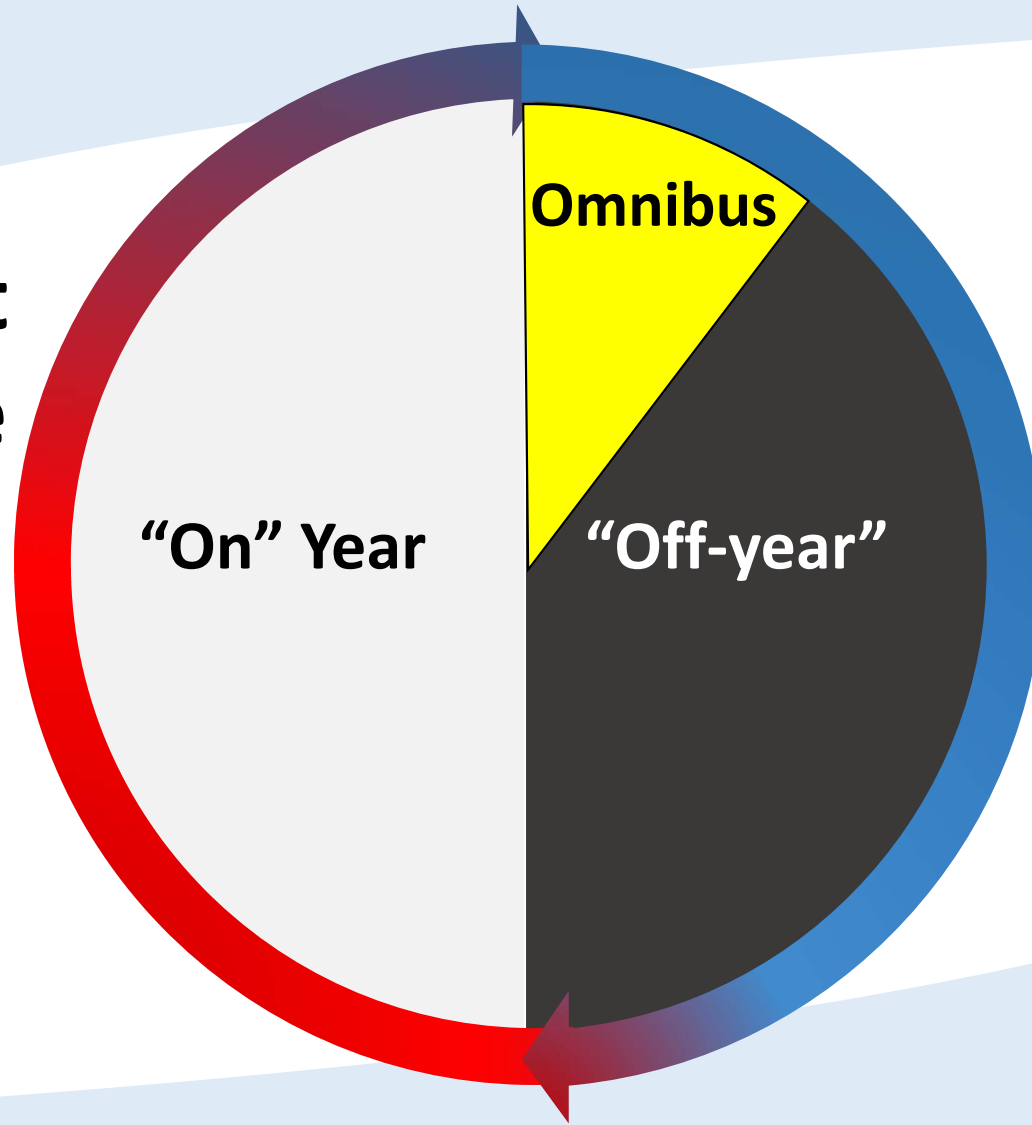
Sectors Needs
LE Fixed Gear
Trawl – Shore IFQ
Trawl – MS Co-op
Trawl – CP Co-op
Open Access
Recreational
Tribal



**O
M
N
I
B
U
S**



COP 9 Biennial Management Activity Cycle



Council Action:

- **Discuss omnibus planning process in the context of existing workload commitments, and provide guidance on next steps.**

Potential questions to consider

- **Is omnibus prioritization working?**
- **Are refinements needed?**
- **What are the workload concerns?**
- **How does Council want to proceed for the coming cycle?**



QUESTIONS?



On-year Management Activities

