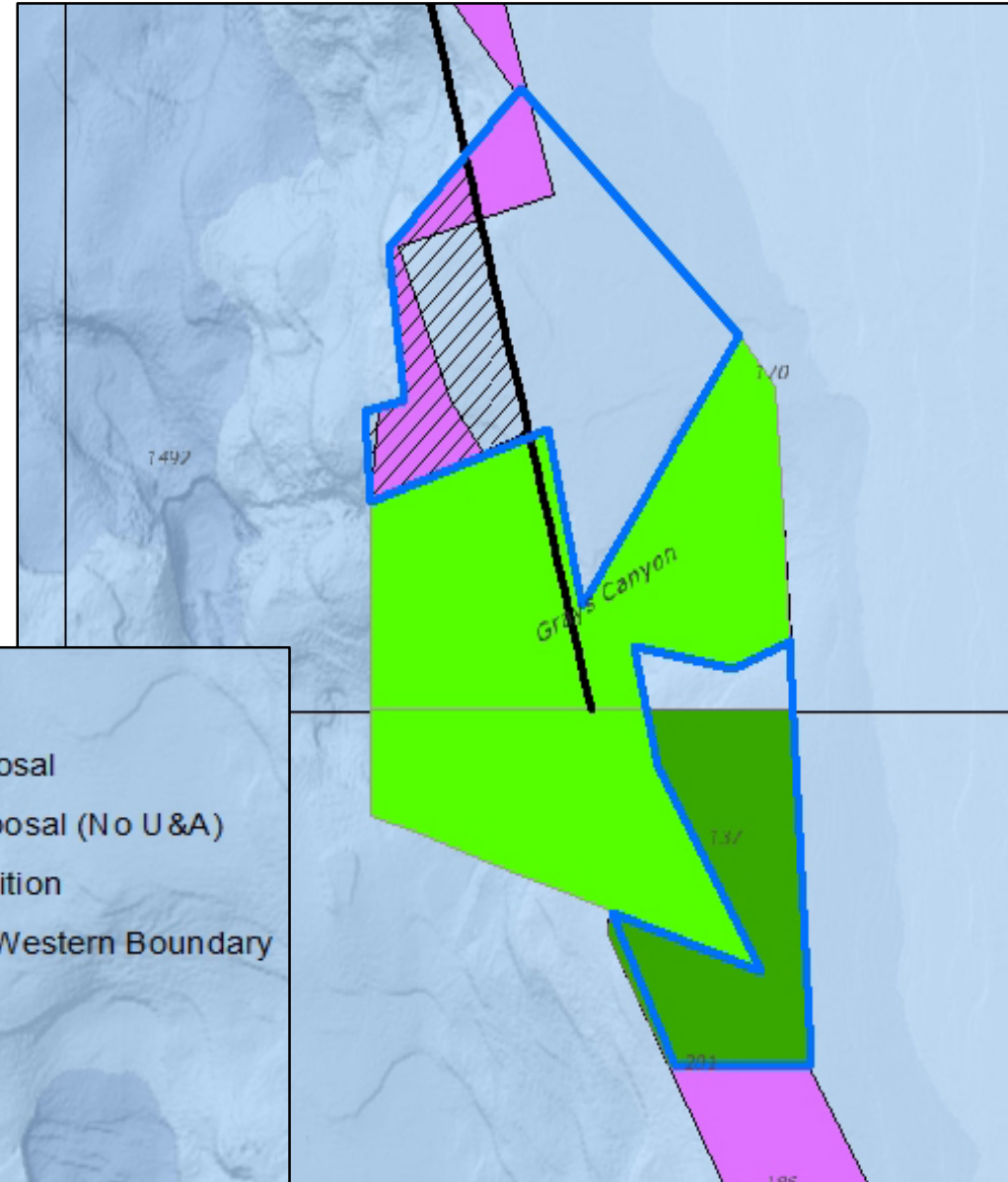
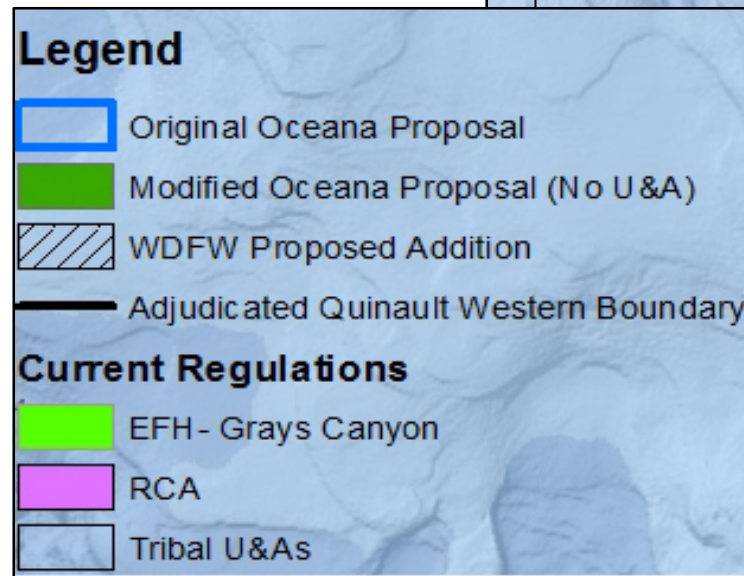


Washington Department of Fish and Wildlife Essential Fish Habitat Conservation Area and Rockfish Conservation Area Maps

Agenda Item F.3.b
Supplemental WDFW Powerpoint
Pacific Fishery Management Council - April 2018

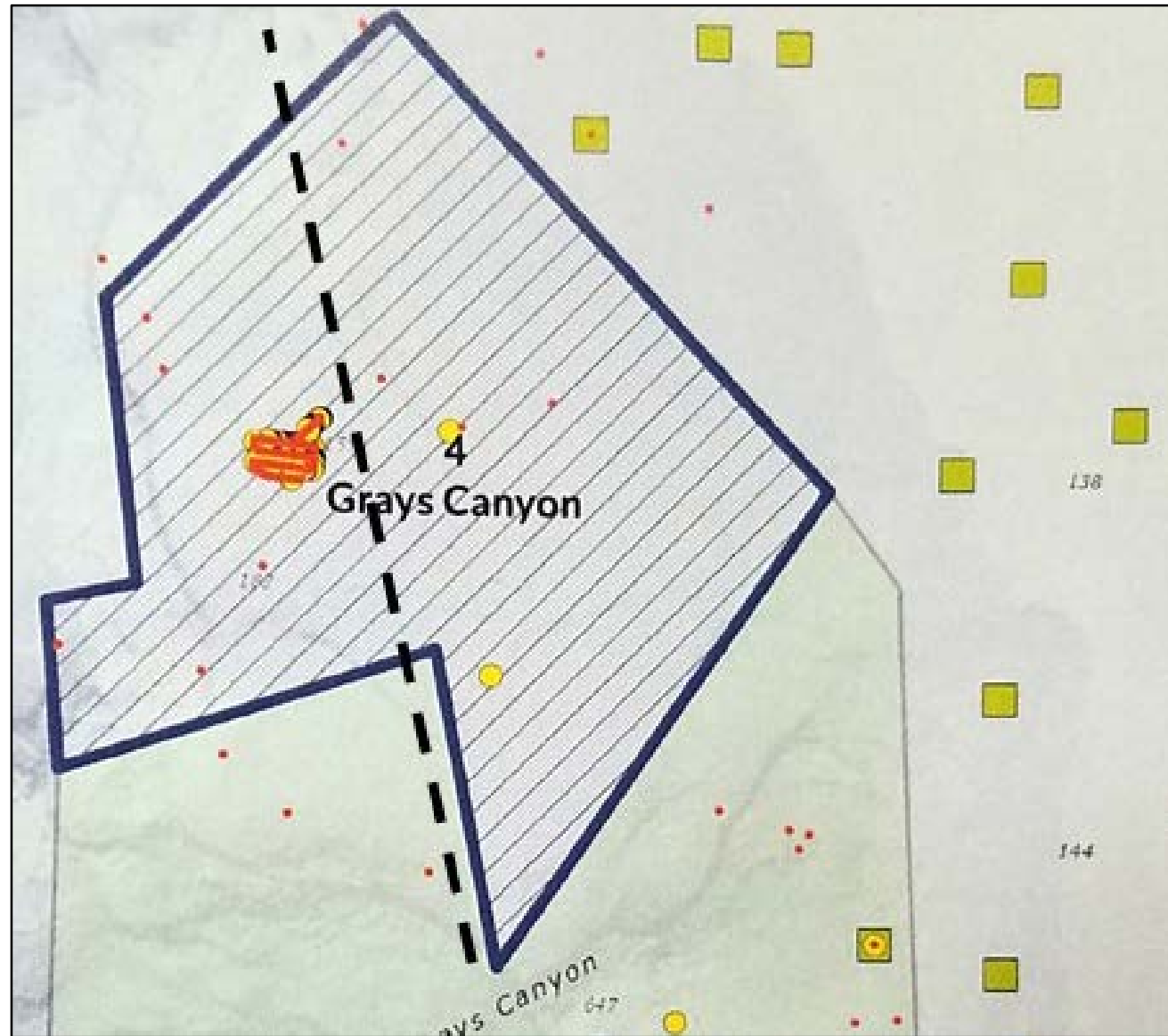
Grays Canyon (north)

Figure 1. Comparison of the adjudicated Quinault U&A western boundary (heavy black line) and original Alternative 1b, Oceana et al. The area the Council may consider is the striped section seaward (i.e., to the left) of the Quinault U&A.



Grays Canyon (north)

Figure 2. Approximation of adjudicated Quinault U&A western boundary (dashed line) and original Alternative 1b, Oceana et al. with observations of corals (yellow circles), sponges (orange dots), and sea pens (yellow squares).



Quinault Canyon

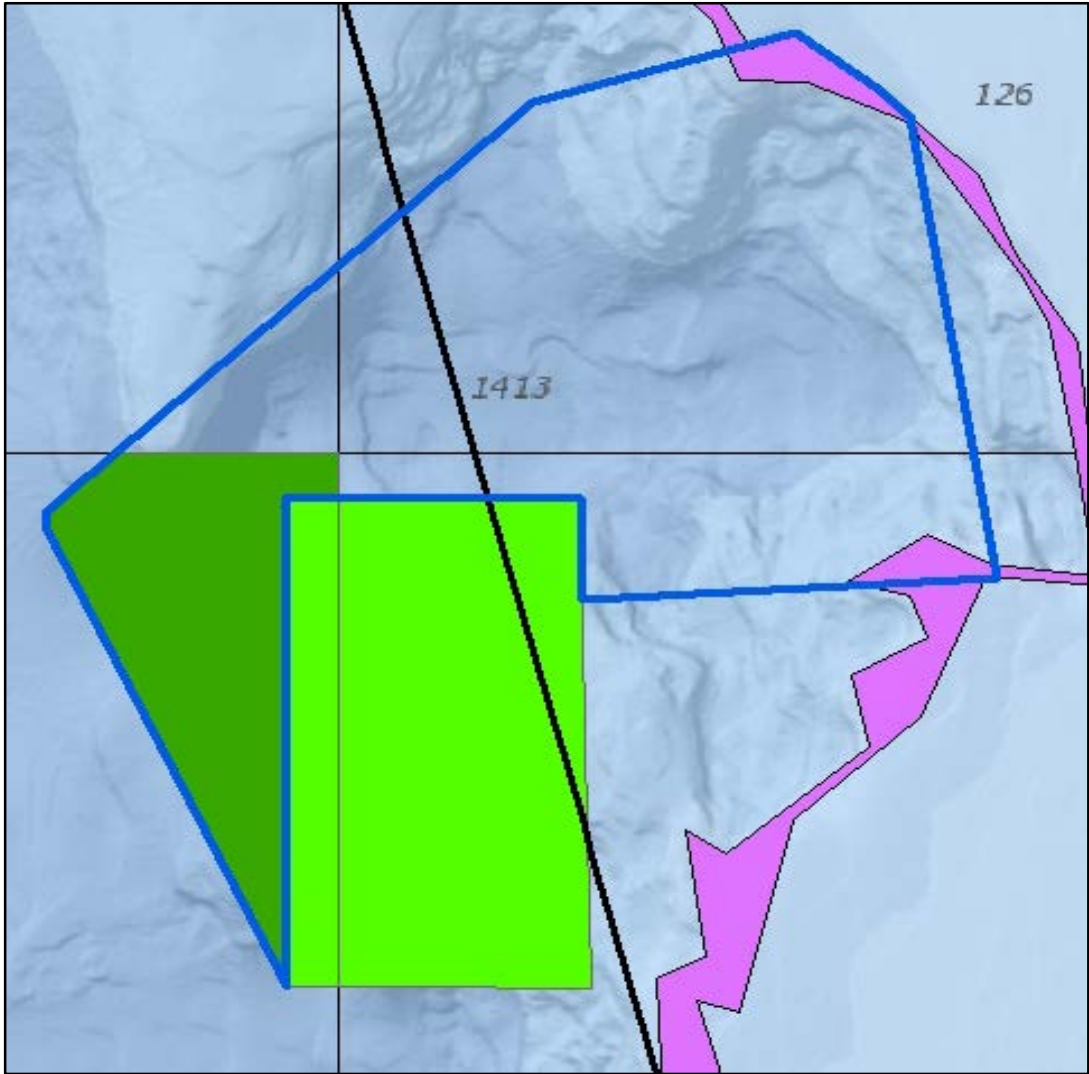
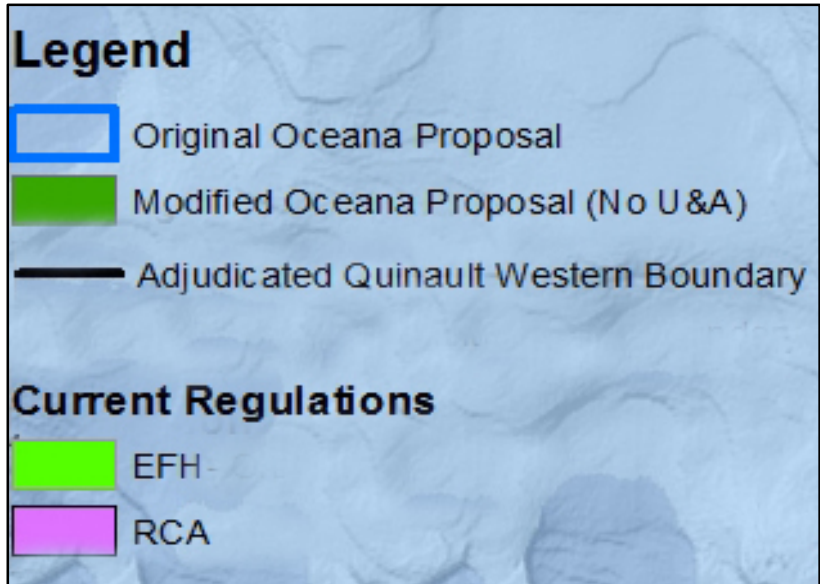


Figure 3. Comparison of adjudicated Quinault U&A western boundary (heavy black line) and original Alternative 1b, Oceana et al.



Quinault Canyon with WDFW- Proposed Northern Boundary

