

Outcomes of the 94th Session of the IPHC Annual Meeting (AM094)

PFMC Meeting
Agenda Item G1
10 March 2018



INTERNATIONAL PACIFIC
HALIBUT COMMISSION

94th IPHC Annual Meeting (AM094)

- 22-26 Jan 2018 in Portland
- All sessions were open to the public and webcast
- A total of 220 participants attended the Session, as well as 99 via the webcast.
- Meeting documents, presentations, and the Report of the AM094:

<https://iphc.int/venues/details/94th-session-of-the-iphc-annual-meeting-am094>



94th IPHC Annual Meeting (AM094)

- Decisions relevant to the PFMC:
 - Catch limits for 2018
 - Adopted fishing periods for 2018
 - Catch sharing plan (IPHC Regulatory Area 2A)
 - New and continuing research projects
 - Evaluation of the IPHC's 32" minimum size limit
 - 2nd Performance Review of the IPHC
 - Fishery Regulations: None that would have a direct impact on Regulatory Area 2A.



Decision table

2018 Alternative				No removals							Reference: SPR=46%					Suggested					Status quo			
Total removals (M lb)				0.0	11.8	21.8	28.8	29.8	30.8	31.8	32.8	33.8	34.8	35.8	37.3	39.0	41.8	42.6	51.8	61.9				
TCEY (M lb)				0.0	10.0	20.0	27.0	28.0	29.0	30.0	31.0	32.0	33.0	34.0	35.5	37.2	40.0	40.8	50.0	60.0				
Fishing intensity				F _{100%}	F _{73%}	F _{58%}	F _{50%}	F _{49%}	F _{48%}	F _{47%}	F _{46%}	F _{45%}	F _{44%}	F _{43%}	F _{42%}	F _{41%}	F _{39%}	F _{38%}	F _{32%}	F _{27%}				
Fishing intensity interval				-	61-84%	45-73%	37-67%	36-66%	36-65%	35-65%	34-64%	33-63%	32-63%	32-62%	31-61%	30-60%	28-58%	27-57%	23-53%	19-48%				
Stock Trend (spawning biomass)	in 2019	is less than 2018	1	3	24	59	64	69	74	78	81	85	87	91	93	98	>99	>99	>99	a				
		is 5% less than 2018	<1	<1	<1	2	2	3	4	5	7	9	11	14	19	29	34	69	96	b				
	in 2020	is less than 2018	<1	1	14	46	52	57	62	67	71	76	80	85	88	95	98	>99	>99	c				
		is 5% less than 2018	<1	<1	1	9	11	14	18	21	25	29	34	41	48	61	68	94	>99	d				
	in 2021	is less than 2018	<1	2	23	59	63	68	72	76	79	83	86	90	92	83	89	99	>99	e				
		is 5% less than 2018	<1	<1	5	27	32	36	41	46	50	55	59	66	72	83	89	99	>99	f				
Stock Status (Spawning biomass)	in 2019	is less than 30%	3	4	5	6	6	7	7	7	7	7	7	8	8	9	9	11	15	g				
		is less than 20%	<1	<1	<1	<1	<1	<1	<1	<1	<1	<1	<1	<1	<1	<1	<1	<1	1	h				
	in 2020	is less than 30%	2	2	4	6	6	6	7	7	8	8	9	9	10	12	13	21	32	i				
		is less than 20%	<1	<1	<1	<1	<1	<1	<1	<1	<1	<1	<1	<1	<1	<1	<1	1	1	j				
	in 2021	is less than 30%	1	1	4	7	8	8	9	10	11	12	13	15	17	1	1	2	7	l				
		is less than 20%	<1	<1	<1	<1	<1	<1	<1	<1	<1	<1	<1	<1	<1	1	1	2	7	l				
Fishery Trend (TCEY)	in 2019	is less than 2018	<1	<1	7	33	38	43	49	55	60	64	68	71	73	78	80	89	97	m				
		is 10% less than 2018	<1	<1	3	23	26	30	34	38	43	48	53	59	63	72	76	82	92	n				
	in 2020	is less than 2018	<1	<1	10	38	43	49	54	59	63	67	70	73	75	79	81	91	98	o				
		is 10% less than 2018	<1	<1	6	27	31	36	40	45	50	54	59	64	67	74	77	84	95	p				
	in 2021	is less than 2018	<1	<1	14	44	50	55	59	63	67	69	72	74	76	81	83	93	>99	q				
		is 10% less than 2018	<1	<1	9	34	38	43	48	52	56	60	63	67	70	81	83	93	>99	q				
Fishery Status (Fishing intensity)		in 2018	is above F _{46%}	0	<1	4	29	33	38	43	50	54	60	64	69	72	77	80	87	95	s			



Catch limits *suggested* for 2018

Pacific halibut catch limits
suggested at AM094 by
Contracting Parties for
2018

(TCEY, in *Mlb. net weight*)

	2A	2B	2C	3A	3B	4A	4B	4CDE	Total
<u>O26 Non-FCEY</u>									
Commercial discards	0.02	0.15							0.46
Bycatch	0.11	0.23							4.26
Recreational (+ discards)	NA	NA							3.31
Subsistence	NA	0.41							1.14
Total Non-FCEY	0.13	0.78							9.18
<u>O26 FCEY</u>									
Commercial discard	NA	NA							0.39
Recreational (+ discards)	0.48	0.97							4.05
Subsistence	0.03	NA	NA	NA	NA	NA	NA	NA	0.03
Commercial Landings	0.69	5.35	3.57	7.35	2.62	1.37	1.05	1.58	23.57
Total FCEY	1.19	6.32	4.45	9.45	2.62	1.37	1.05	1.58	28.04
TCEY	1.32	7.10	6.34	12.54	3.27	1.74	1.28	3.62	37.21
<u>U26</u>									
Commercial discards	0.00	0.00	0.00	0.01	0.02	0.01	0.00	0.00	0.05
Bycatch	0.00	0.02	0.00	0.42	0.44	0.11	0.01	0.79	1.79
Total U26	0.00	0.03	0.00	0.43	0.46	0.12	0.01	0.79	1.83
Total Mortality	1.32	7.13	6.34	12.97	3.73	1.86	1.29	4.41	39.04

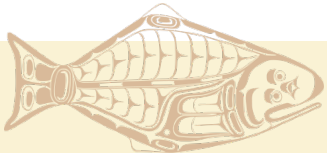
Reg. Area 2A (FCEY)
2014 = 0.96 Mlbs
2015 = 0.97 Mlbs
2016 = 1.14 Mlbs
2017 = 1.33 Mlbs
2018 = 1.19 Mlbs



Fishing Periods for 2018

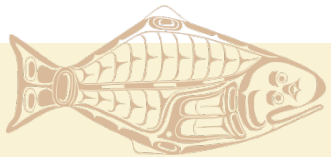
IPHC Pacific halibut fishery regulations, Section 9.

- **Regulatory Area 2A directed commercial fishery** shall begin at 0800 hours and terminate at 1800 hours local time on **27 June, 11 July, 25 July, 8 August, 22 August, 5 September, and 19 September**, unless the Commission specifies otherwise.
- Sablefish and the Salmon troll incidental catch fishery between **24 March and 7 November**.
- **All commercial fishing** for Pacific halibut in IPHC Regulatory Areas 2A, 2B, 2C, 3A, 3B, 4A, 4B, 4C, 4D, and 4E shall **cease at 1200 hours local time on 7 November**.



Catch Sharing Plan for Regulatory Area 2A

- (AM094, para. 70) The Commission **NOTED** the PFMC Catch Sharing Plan for IPHC Regulatory Area 2A (west coast U.S.A.)
 - IPHC-2018-AM094-AR01: PFMC update, indicating the CSP changes for 2018.

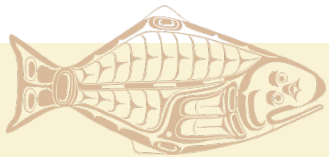


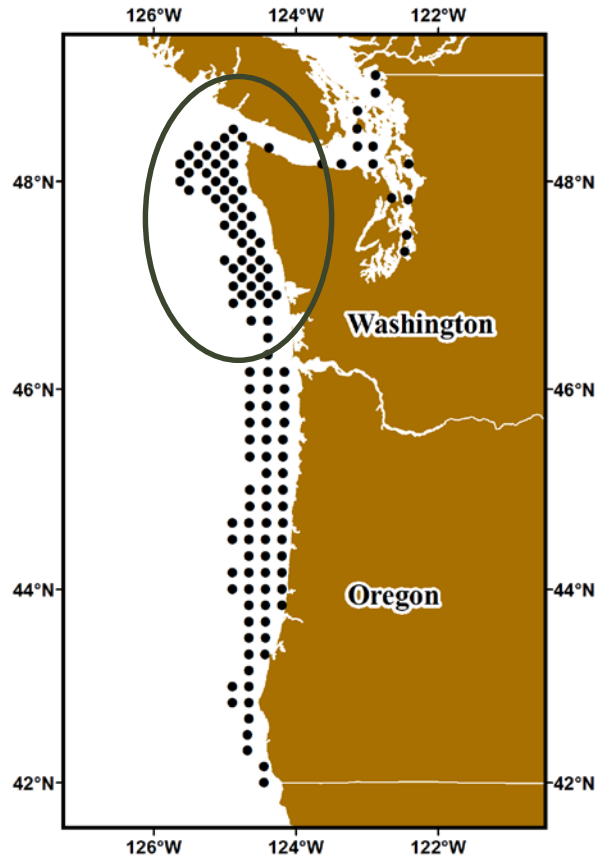
New and continuing research

- IPHC Fishery-independent setline survey expansion 2018
 - Regulatory Areas 2B and 2C
 - Regulatory Area 2A ad-hoc expansion (densification) repeat; & salish sea stations

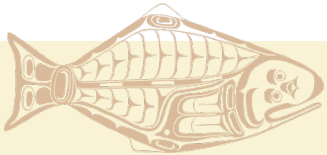
2019

- Regulatory Area 3A and 3B in 2019

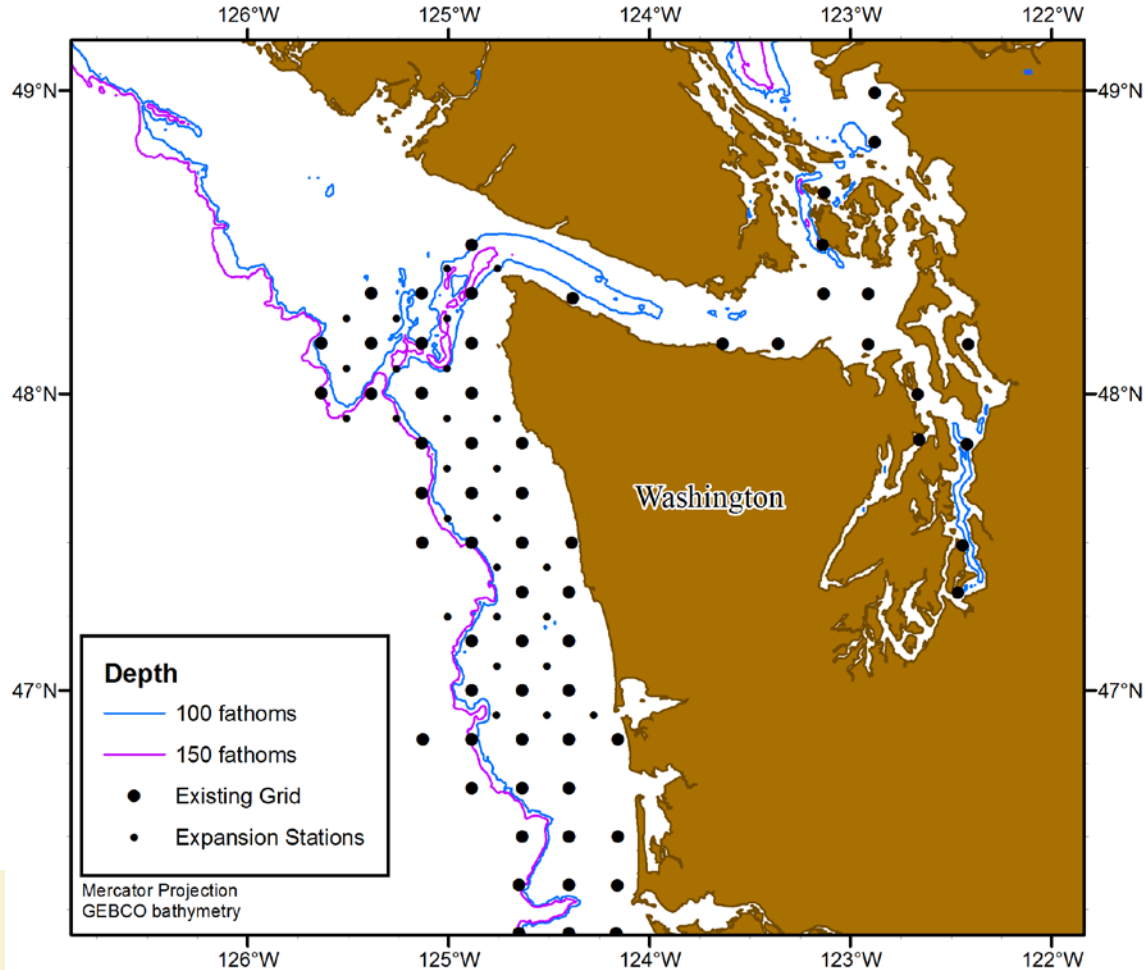




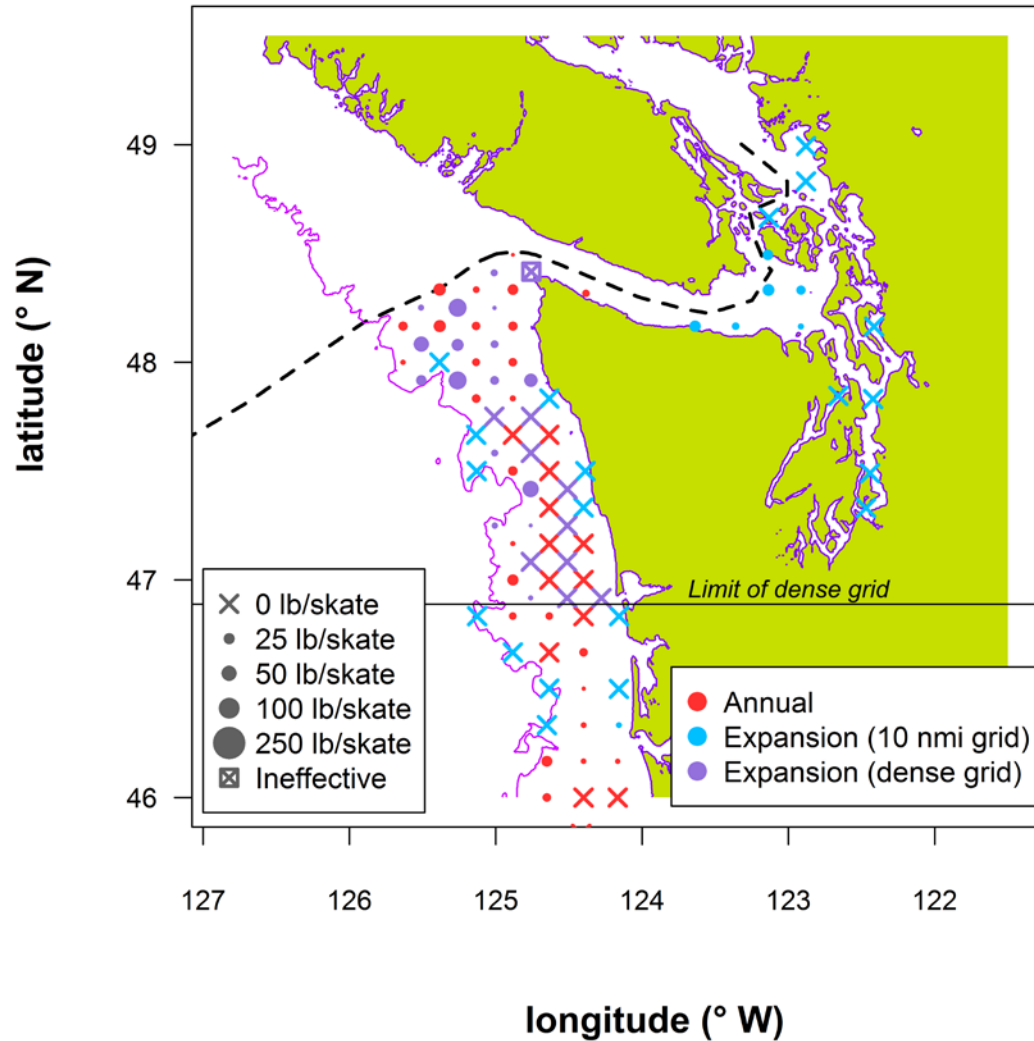
2018 IPHC Regulatory Area 2A
setline survey, incl. an
ad-hoc expansion (densification)



2018 IPHC Regulatory Area 2A ad-hoc expansion (densification) off Washington

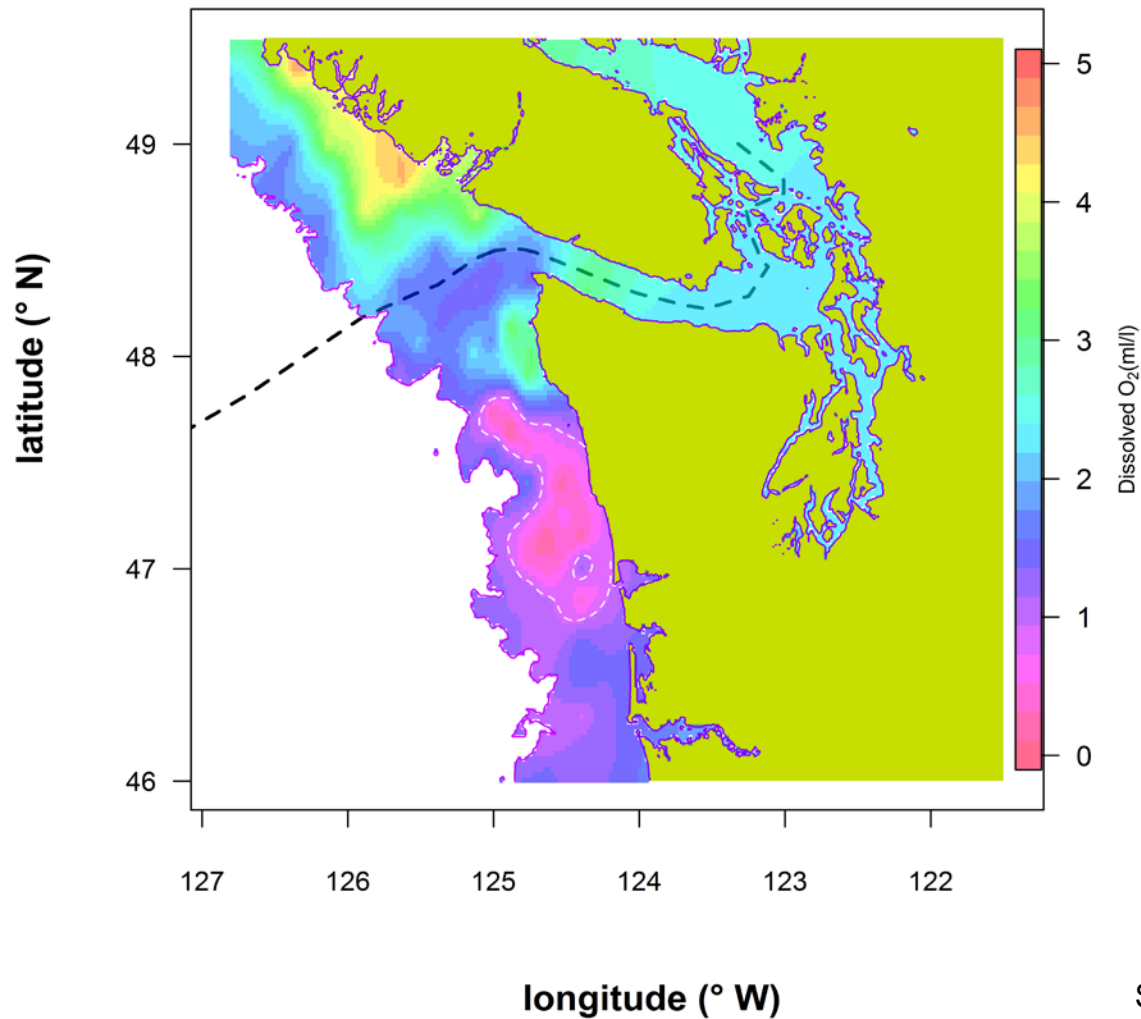


2017 Regulatory Area 2A Washington



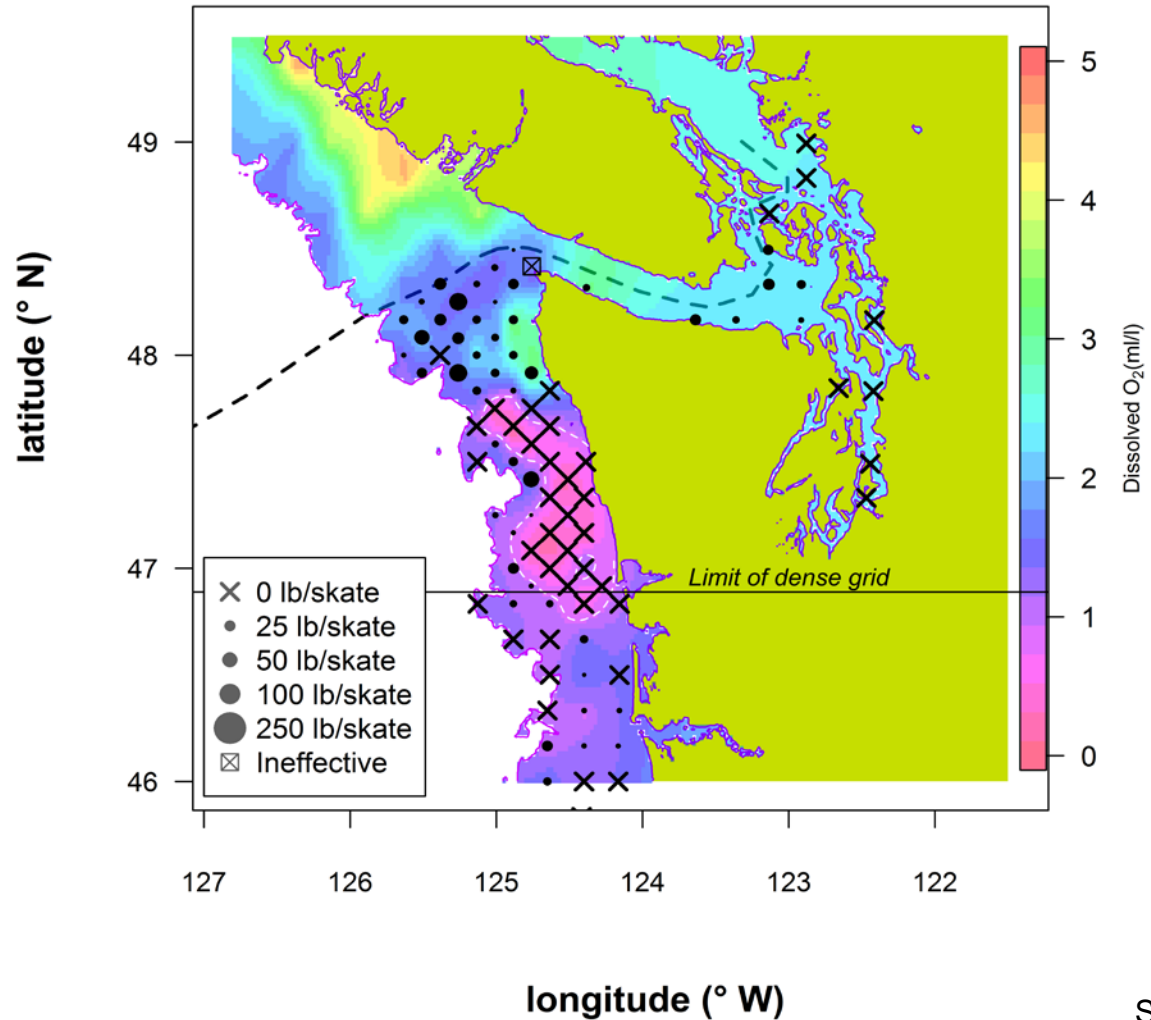
2017 Regulatory Area 2A

Washington
+ dissolved O₂



2017 Regulatory Area 2A

Washington
+ dissolved O₂



New and continuing research proposals



1. Reproduction

- SEX RATIO OF CATCH
- IMPROVED MATURATION ESTIMATES OF SPAWNING BIOMASS

2. Growth

- CHANGES IN SIZE AT AGE/BIOMASS
- TOOLS TO ASSESS FISH CONDITION

3. DMRs and post-release survival assessment

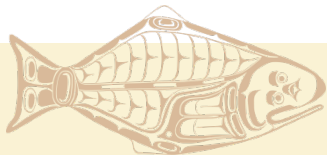
- BYCATCH SURVIVAL ESTIMATES

4. Migration

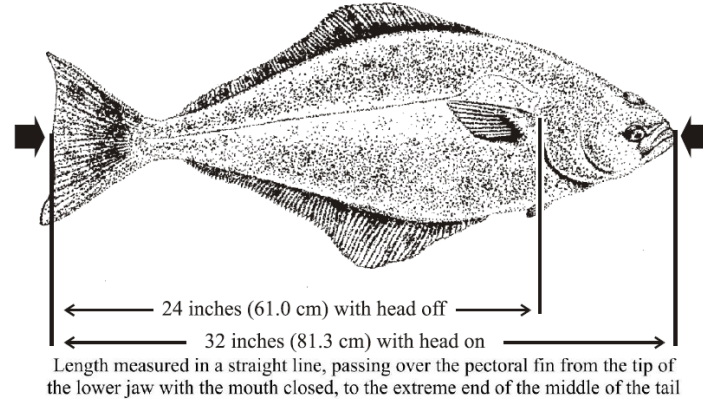
- LARVAL DISPERSAL
- ADULT FEEDING AND REPRODUCTIVE MIGRATION

5. Genetics and genomics

- GENETIC STRUCTURE OF THE POPULATION
- GENOMIC TOOLS (e.g. GENOME)



Evaluation of the 32" minimum size limit



(AM094. para 88) The Commission **AGREED** that consideration of the magnitude of current discard mortality, the potential change in fishery yield, uncertainty in the market value of Pacific halibut below the current MSL and potential changes in fishery practices in response to a change in the MSL represent the primary trade-offs identified.



Evaluation of the 32” minimum size limit

(AM094. para 89) The Commission **NOTED** report IPHC-2018-AM094-14, which indicated that the performance of the management procedure is dominated by management decisions other than the size limit, (e.g. removal of the size limit is likely to result in minimal changes in yield) and **RECOMMENDED** that the size limit remain unchanged.



IPHC Pacific halibut fishery regulations

2018: Relevant to Reg. Area 2A

Adopted proposals:

- 1) *IPHC-2018-AM094-PropA4*: Minor revisions, including wording to be clear that the *Head-on landed weight requirement for the commercial fishery, including removal of the 24" head-off minimum size limit*, still applied to Regulatory Area 2A.

Deferred proposals:

- 1) *IPHC-2018-AM094-PropA1* – IPHC Closed Area review
- 2) *IPHC-2018-AM094-PropA5* – Discussion paper: Frozen-at-sea exemption for head-on requirement



Management strategy evaluation (MSE)

AM094–Req.01 ([para. 31](#)) The Commission **REQUESTED** that the MSAB look at SPR values consistent with recent estimated SPR values from the assessment model and lower. This would mean expanding the lower range of SPR values to below 40%.

- *The work on coastwide scale is priority for 2018 and it is planned to discuss specific SPR values at AM095.*

AM094–Rec.01 ([para. 36](#)) The Commission **RECOMMENDED** that the draft goals, objectives, and performance metrics, as detailed in Appendix IV, IPHC-2017-MSAB10-R be used for ongoing evaluation in the MSE process, and that they may be refined in the future. The objectives should be evaluated in a hierarchal manner, with conservation as the first priority.

- *The objectives are key to determining a management procedure, and the MSAB has a draft set that they are working with.*



Management strategy evaluation (MSE)

AM094–Rec.02 ([para. 39](#)) The Commission **RECOMMENDED** that the IPHC Secretariat consider the survey WPUE grid across the fishery as well as other biological factors (e.g. habitat configuration, size distribution in the region etc.) and provide alternatives to the current management areas (e.g. biological regions), and that the MSAB consider additional ways to incorporate biological information into TCEY distribution procedures.

- *IPHC Secretariat and the MSAB are considering distributing the TCEY to biological regions with further distribution to IPHC Regulatory Areas. The distribution from Region to Area may be based on many different procedures.*



2nd Performance Review of the IPHC

International Pacific Halibut Commission (IPHC)

Noting that the [1st Performance Review](#) of the IPHC occurred in 2011-12 (see paper [IPHC-2017-AM093-17](#), and that the generally agreed best practice among RFMOs requires a Performance Review to be undertaken every 3-5 years, the IPHC has agreed to undertake a 2nd Performance Review of the IPHC.

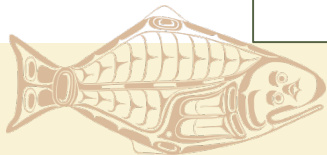
PANEL MEETINGS DEFERRED
UNITL 2019

PREPARED BY
SCOTT MCKENRY AND BENNETT BROOKS
CONCUR, INC.

Noting the above, the Recommendations arising from the 2nd Performance Review of the IPHC
are provided at [Figure 1](#) to, with recommendations, updates, responses to recommendations, and
proposed parties, incorporated by the Commission's consideration.

Page 1 of 11

Prepared for: International Pacific Halibut Commission
Prepared by: SCOTT MCKENRY AND BENNETT BROOKS
CONCUR, INC.
Date: 2019-03-01
Page 1 of 11



Meeting documents and Report of the AM094:

<https://iphc.int/>



INTERNATIONAL
PACIFIC HALIBUT
COMMISSION



[The Commission](#) [Science & Research](#) [Fisheries](#) [Data](#) [Meetings](#) [Documents](#)

QUICK LINKS

- ▶ [Stock Status and Biology](#)
- ▶ [Fishery Regulations](#)
- ▶ [Performance Monitoring](#)
- ▶ [Circulars](#)
- ▶ [Seminar Series](#)
- ▶ [Meetings Calendar](#)
- ▶ [Glossary of Terms](#)
- ▶ [Contact Us](#)

Celebrating the signing of the
Pacific Halibut Treaty on 2 March 1923

95 Years

News Releases

6 MARCH 2018

IPHC NEWS RELEASE 2018-04
IPHC Solicits Applications for the IPHC...

22 FEBRUARY 2018

IPHC NEWS RELEASE 2018-03
Report of the 94th Session of the IPHC...

16 FEBRUARY 2018

Upcoming Meetings

7
MAY

11th Session of the IPHC
Management Strategy Advisory
Board (MSAB11)

19
JUN

12th Session of the IPHC Scientific
Review Board (SRB12)

25

13th Session of the IPHC Scientific
Review Board (SRB13)

Recent Reports

20 FEBRUARY 2018

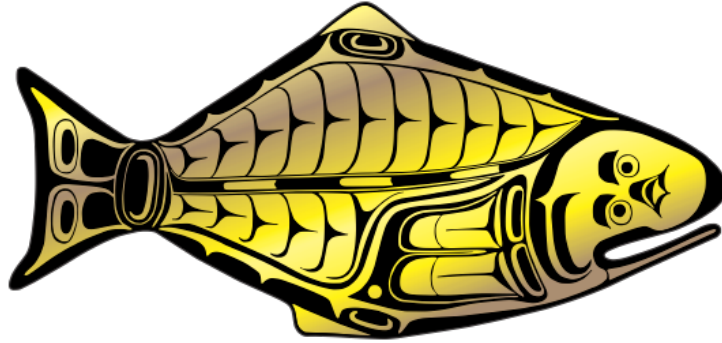
IPHC-2018-AM094-R Report of the 94th
Session of the IPHC Annual Meeting...

26 JANUARY 2018

IPHC-2018-CB088-R Report of the 88th
Session of the IPHC Conference Board...

25 JANUARY 2018

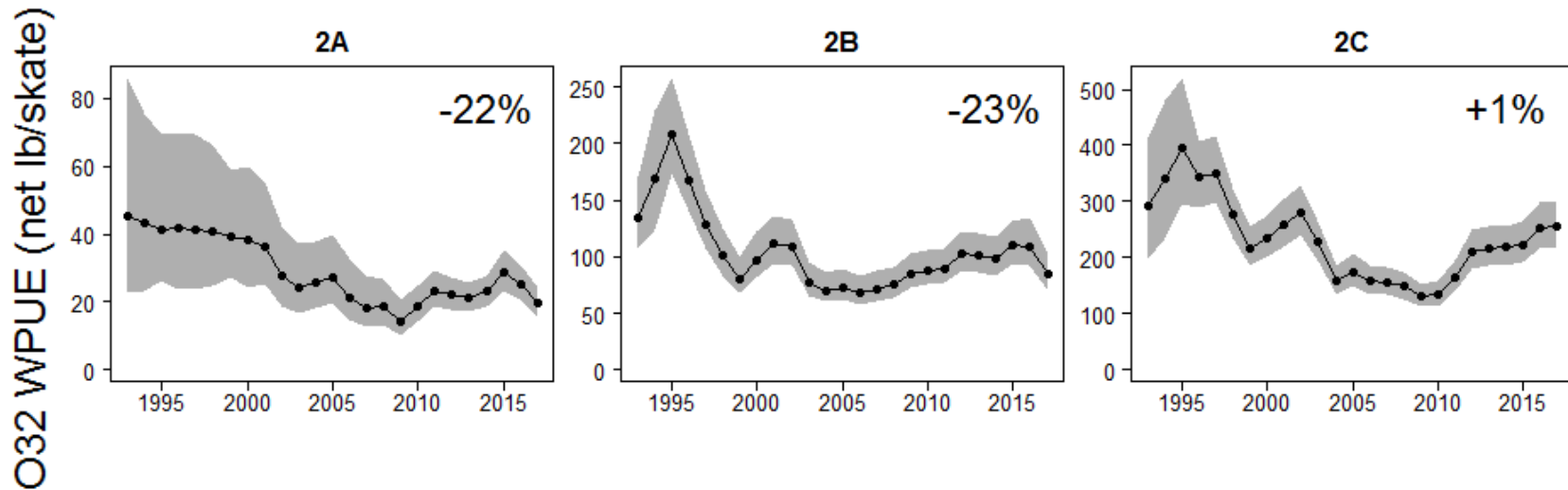
INTERNATIONAL PACIFIC



HALIBUT COMMISSION



Fishery-independent setline survey (Regulatory Area 2)



Commercial WPUE

Separating 2A **tribal** and **non-tribal** trends

