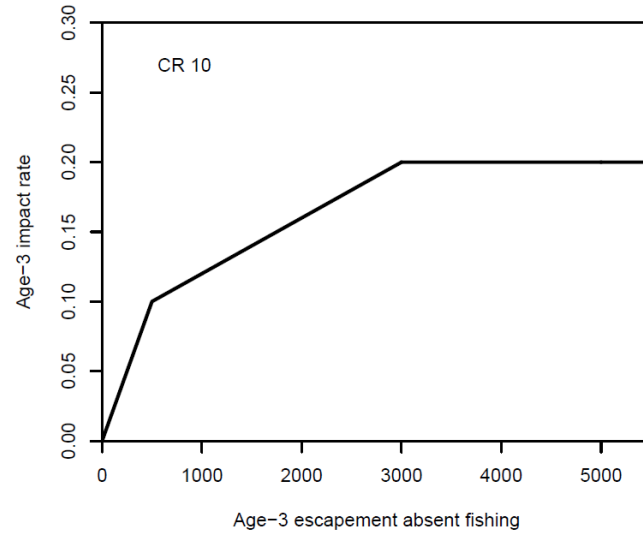
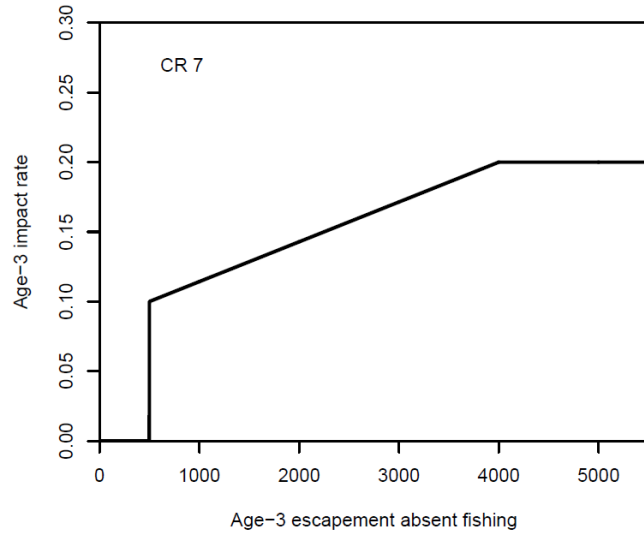
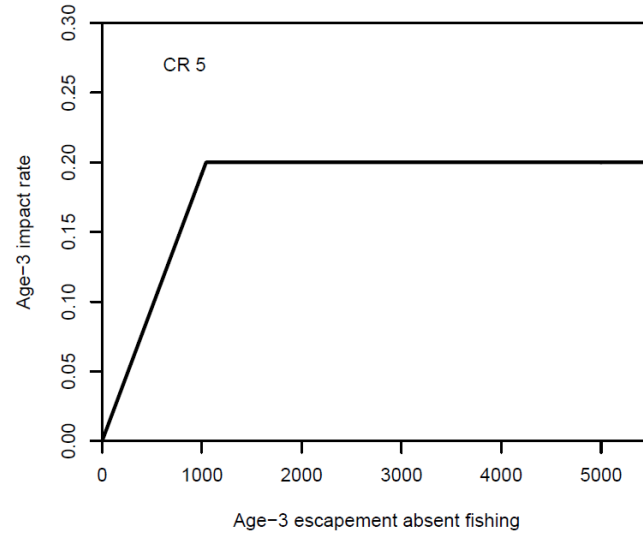
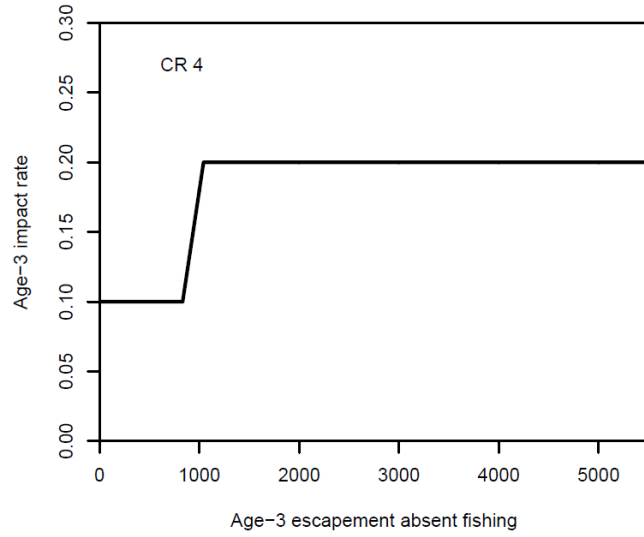
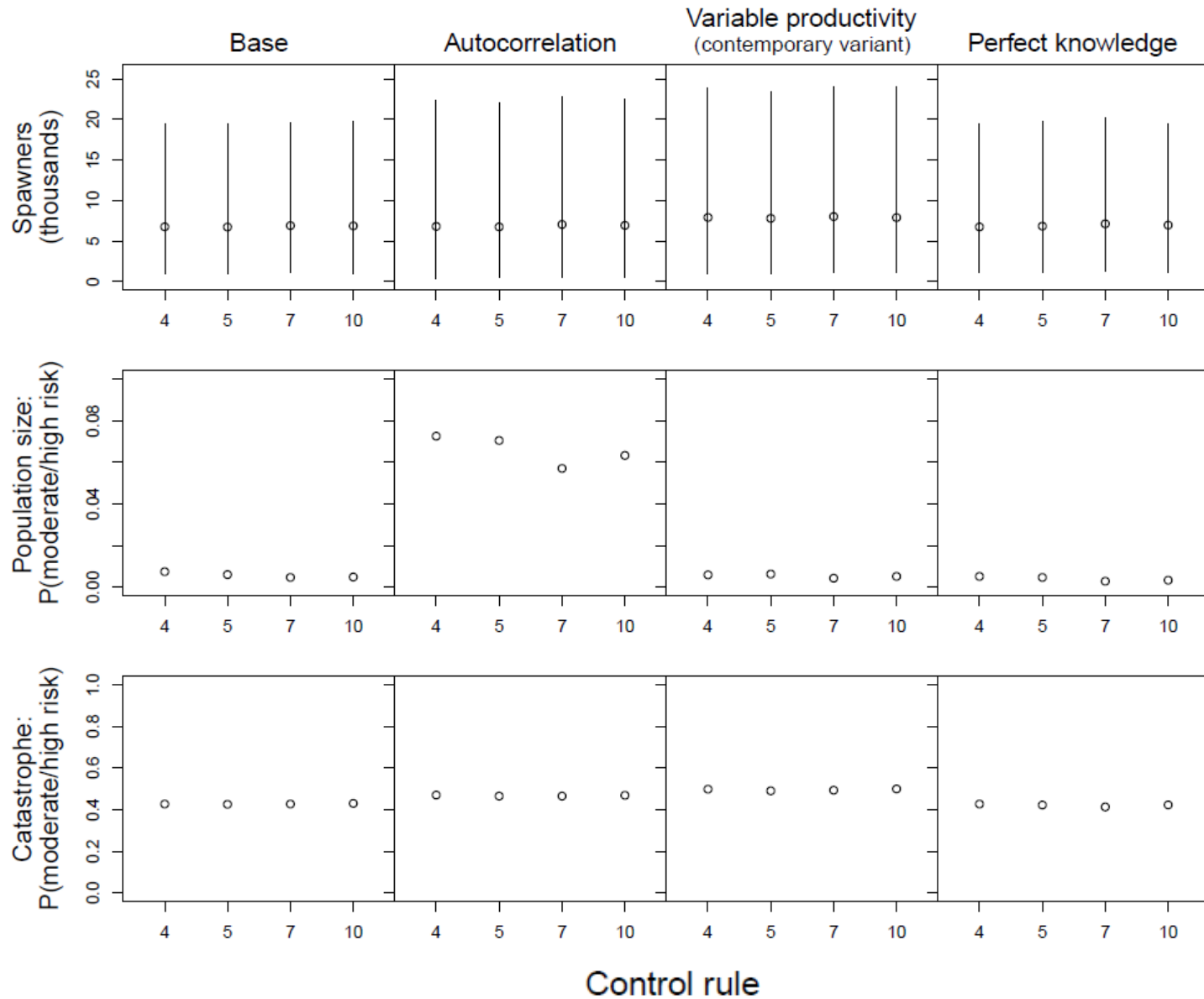


Ad hoc SRWC working group report

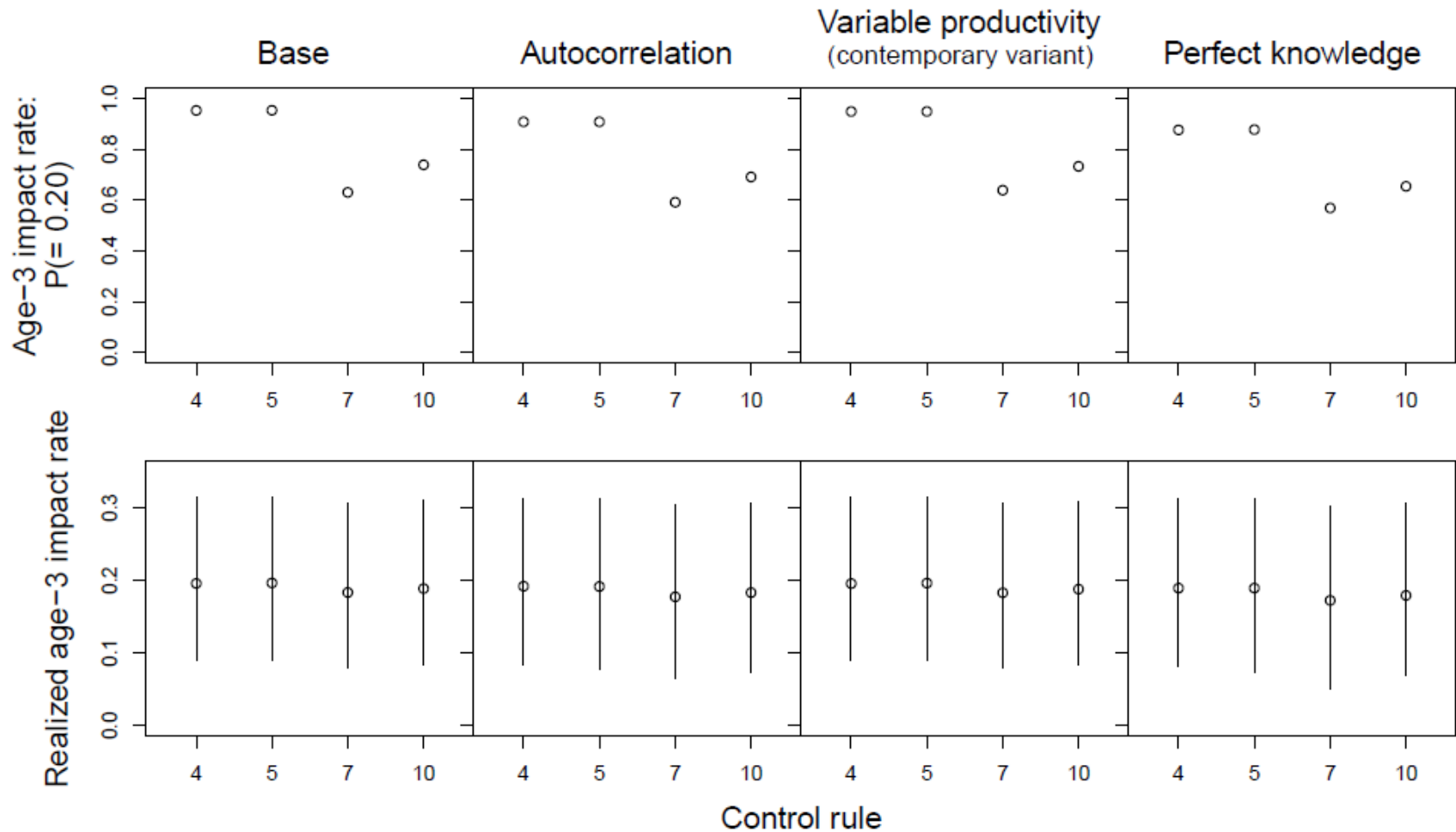
- Addendum to Sept 2017 report
- MSE results: four control rules (4, 5, 7, 10)
- New MSE results developed for CR 10
- All CRs evaluated using the median of the abundance forecast distribution



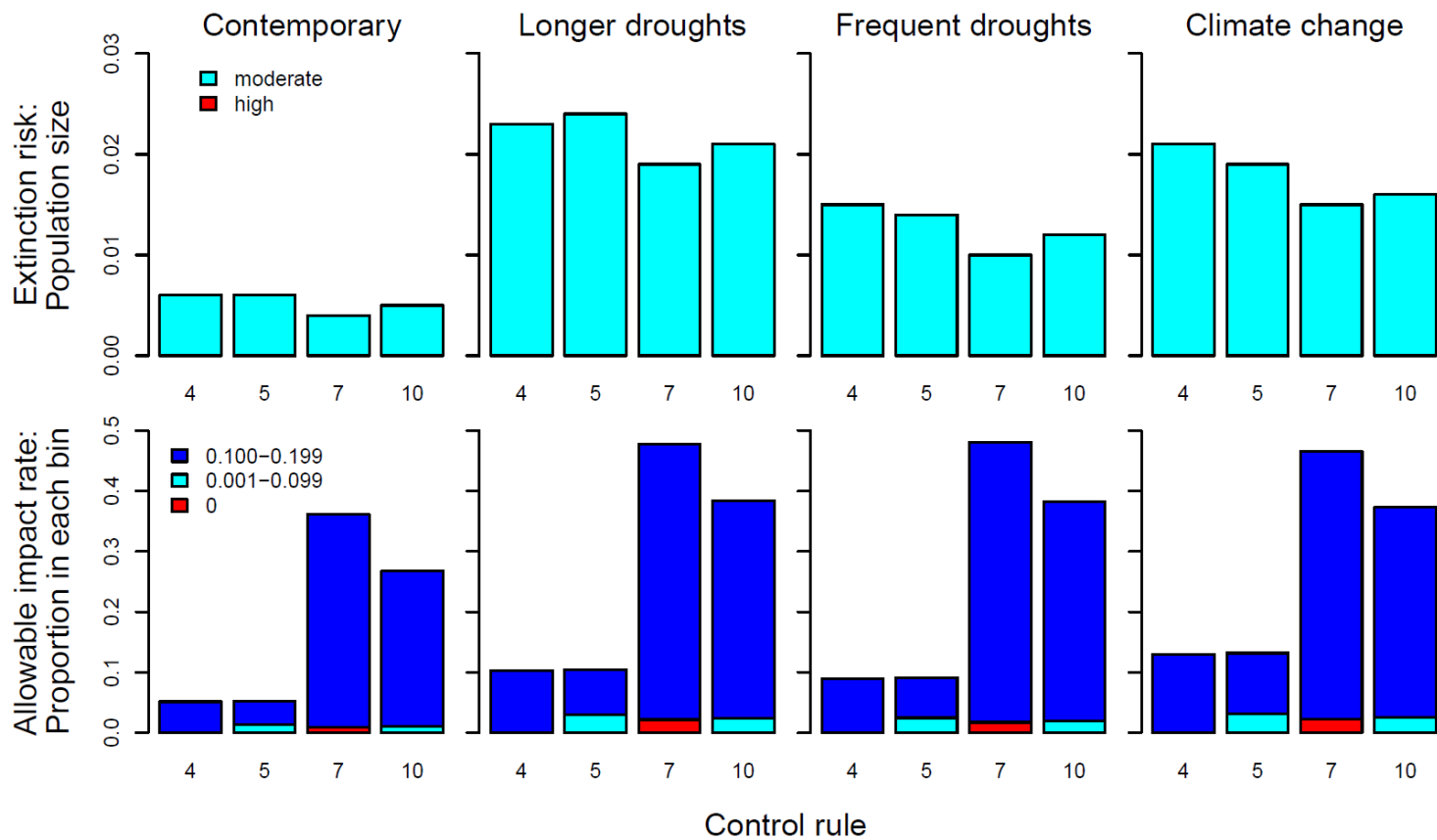
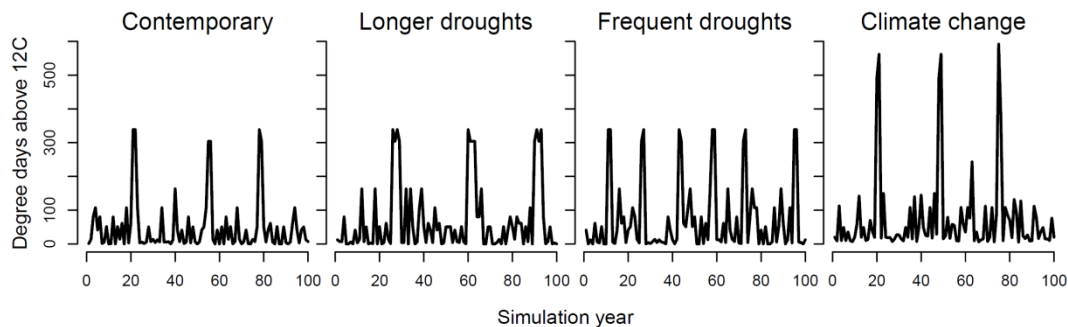
Population results



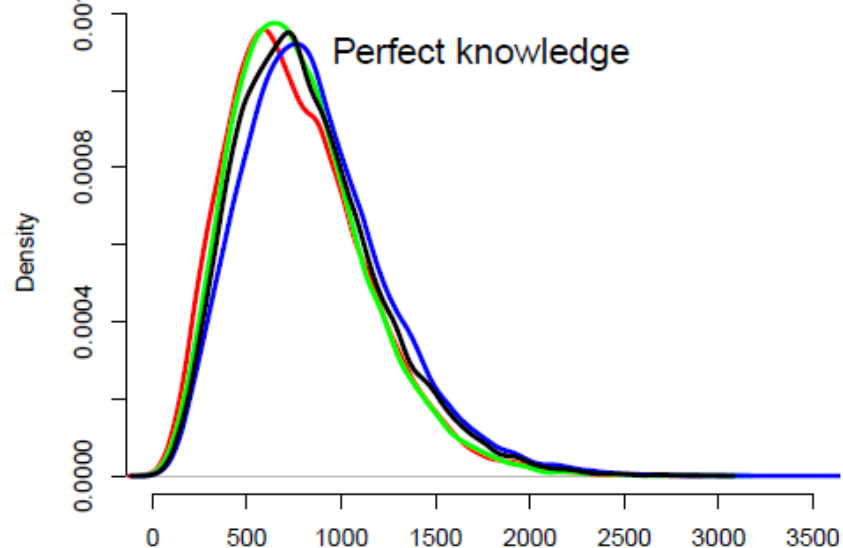
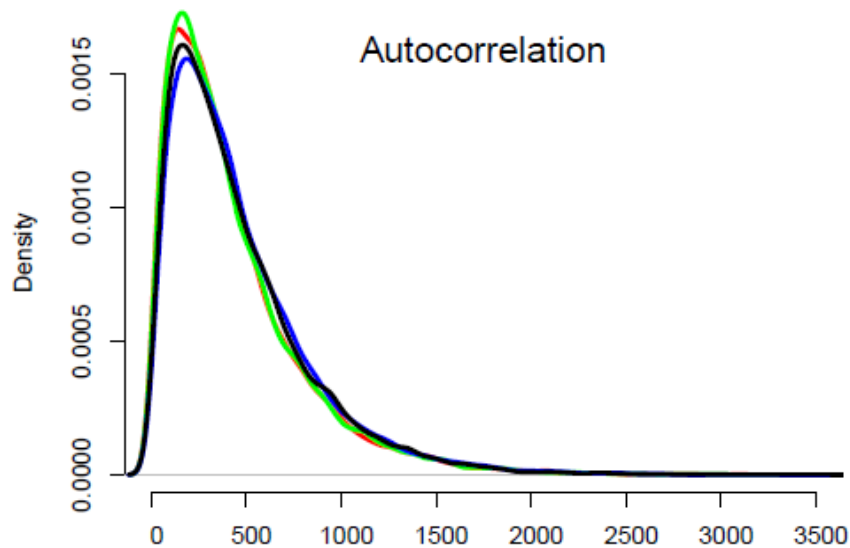
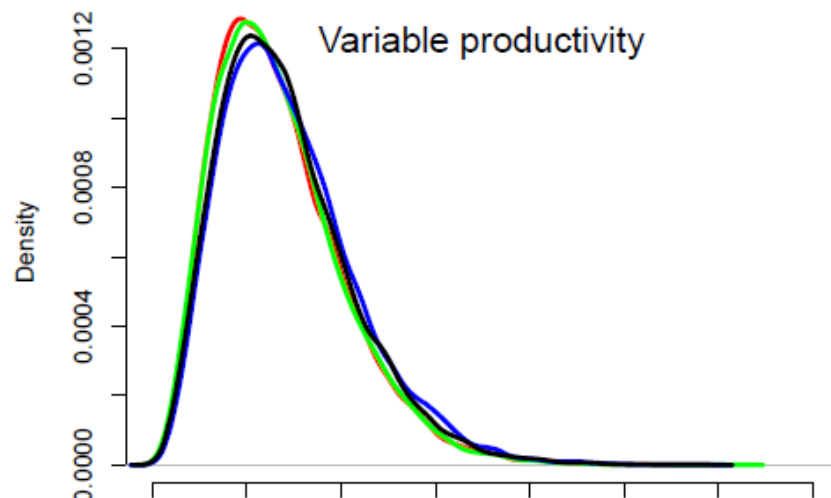
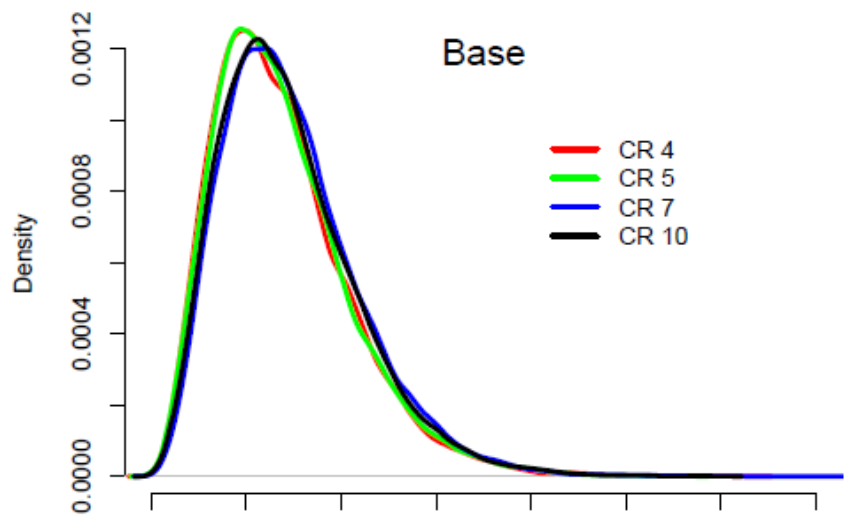
Fishery results



Variable productivity

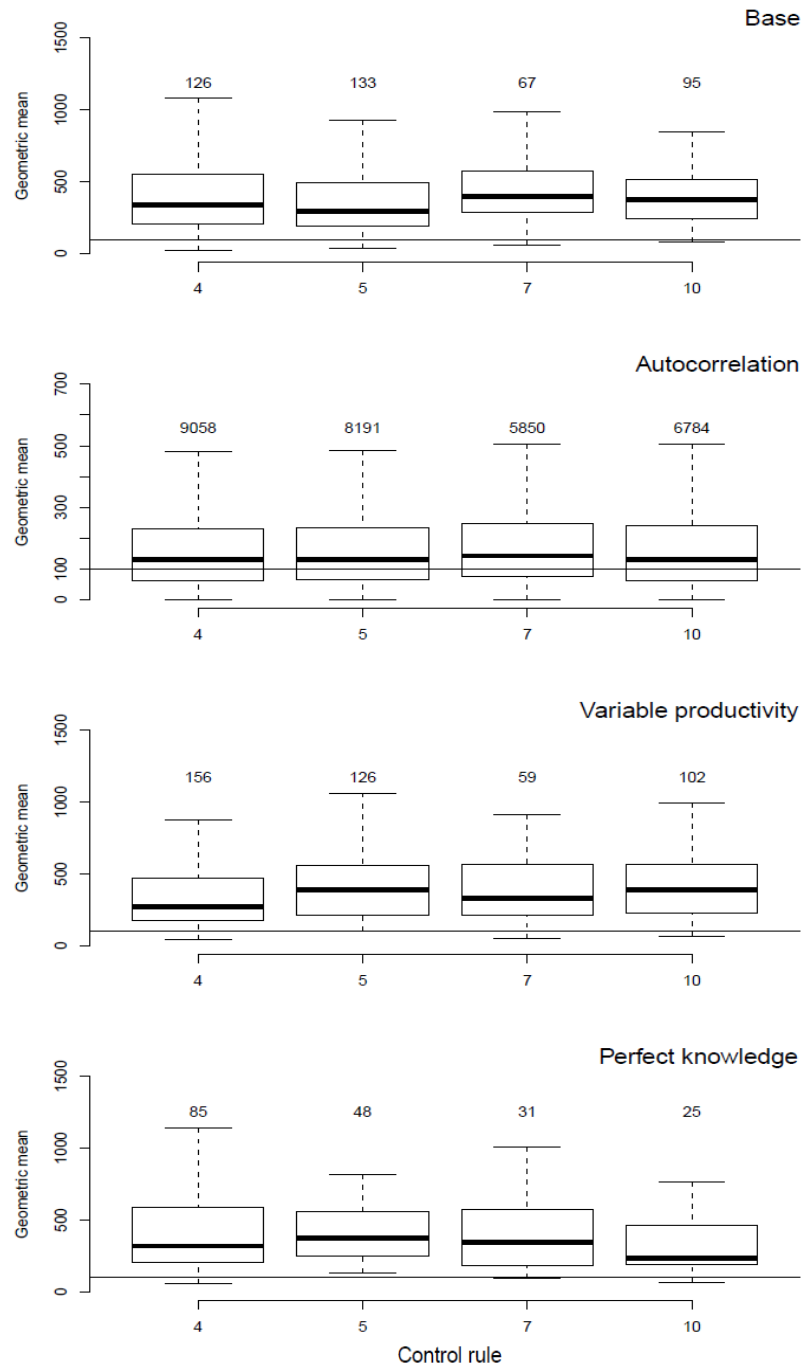


Minimum number of spawners



Minimum number of spawners

Response to crossing low abundance threshold



Core results

- Extinction risks
 - CR 4-5 highest risk
 - CR 7: lowest risk,
 - CR 10: intermediate risk
- Fishery costs
 - CR 4-5: lowest costs
 - CR 7: highest costs
 - CR 10: intermediate costs
- General result robust to alternative scenarios