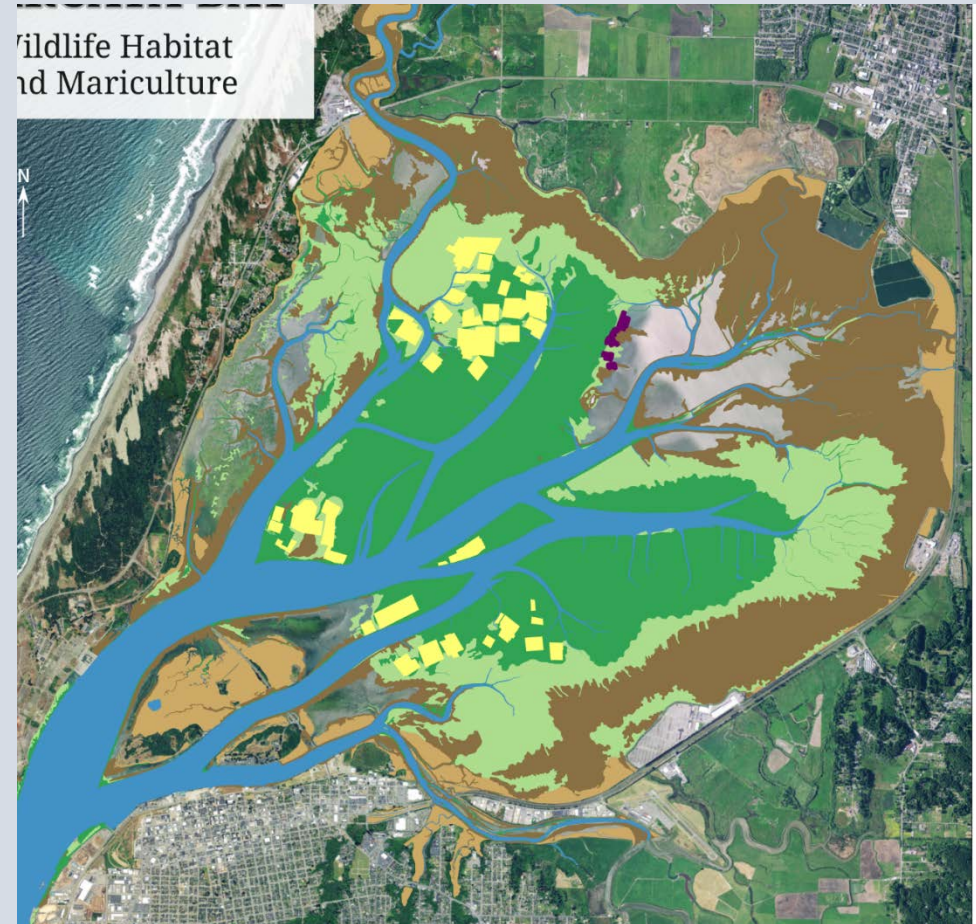
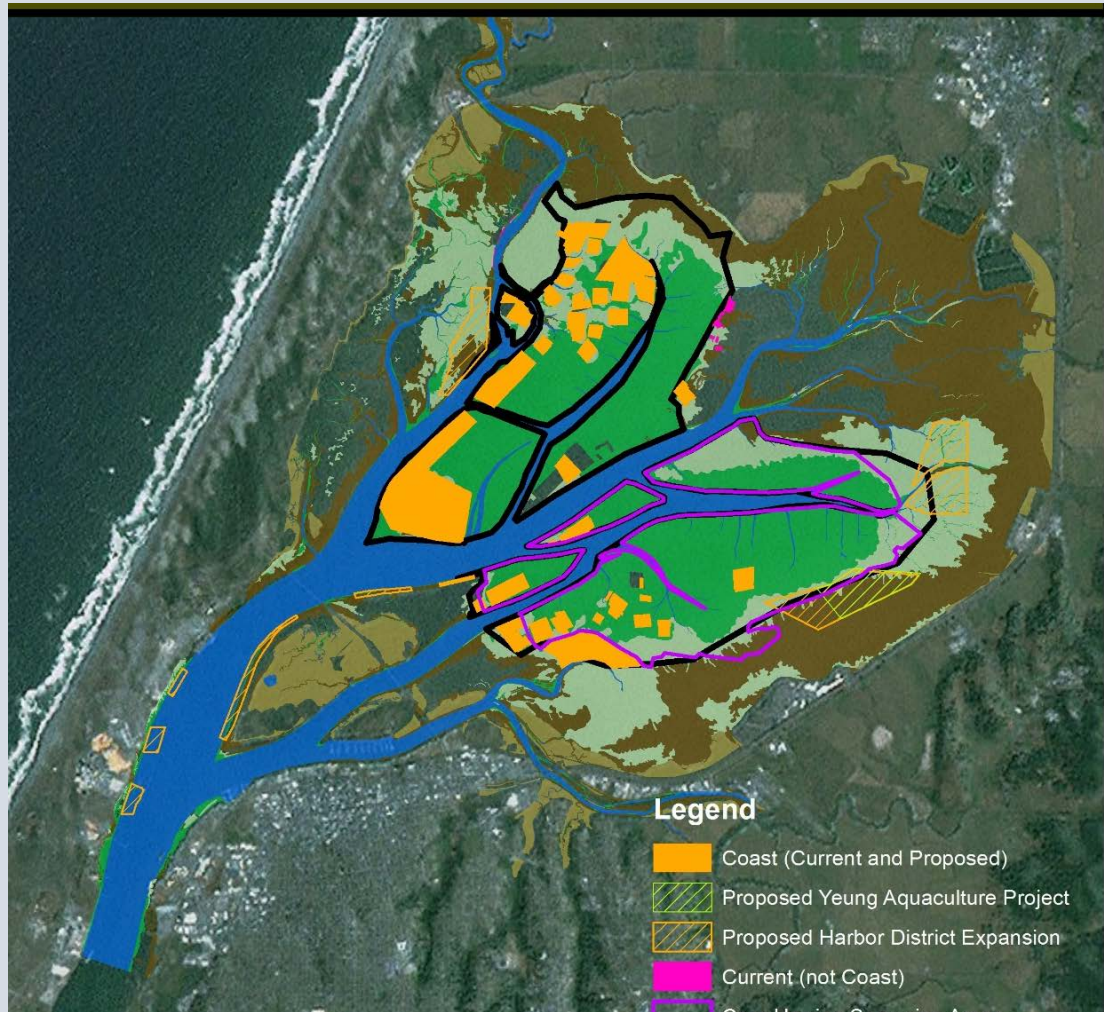


Update on Coast Seafoods Aquaculture Development in Humboldt Bay



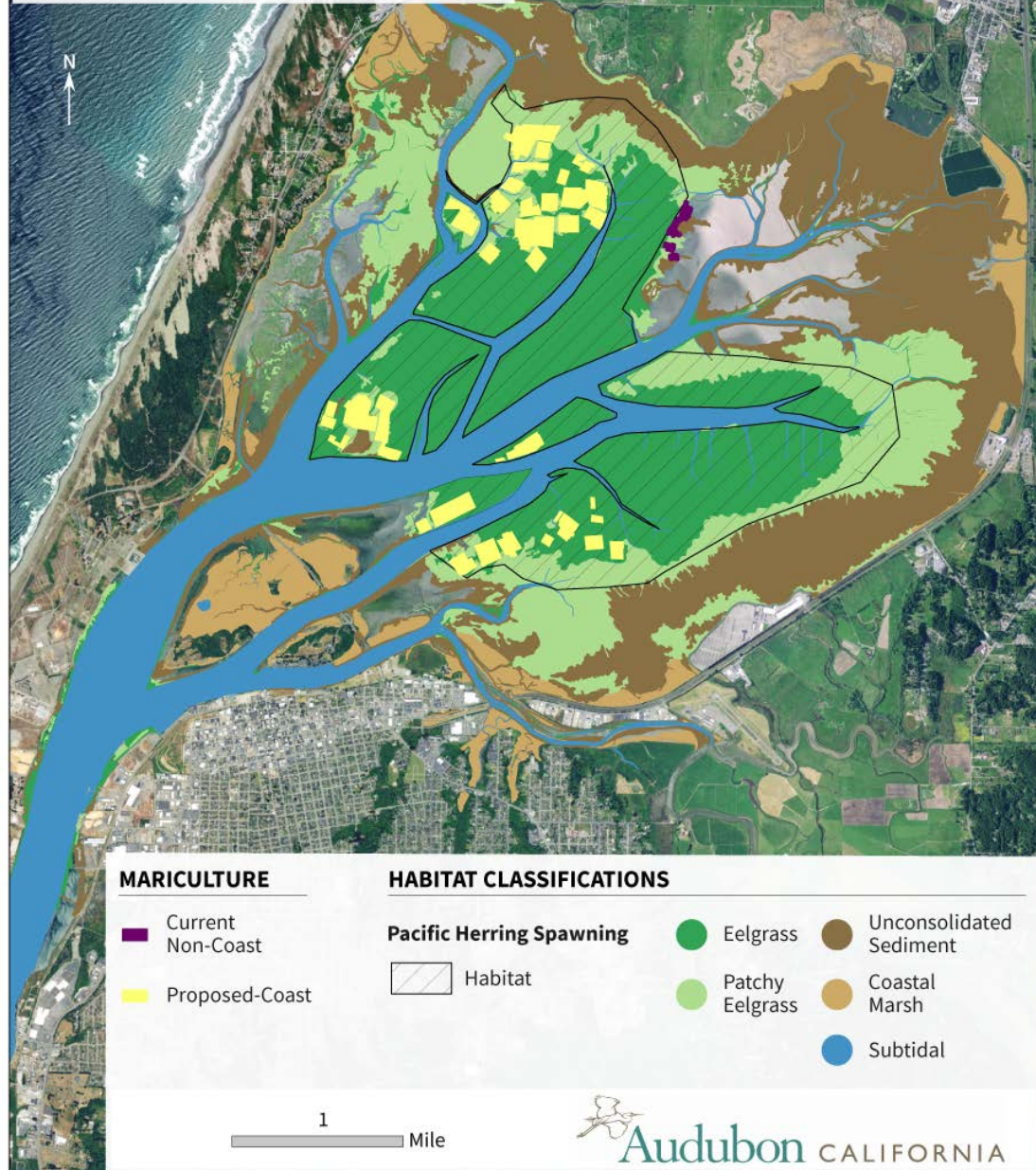
- Coast/Pacific has been operating on 300 acres (2006 CDP).
- Coast/Pacific requested 922 then 490 acres.
- Coastal Commission staff recommended 423 acres.
- In June 2017, Coastal Commissioners rejected this recommendation.

- Project before Coastal Commission September 13, 2017
278 acres, more consolidated.



ARCATA BAY

Wildlife Habitat, Mariculture, and Herring Spawn Areas



HUMBOLDT BAY

Wildlife Habitat and Mariculture

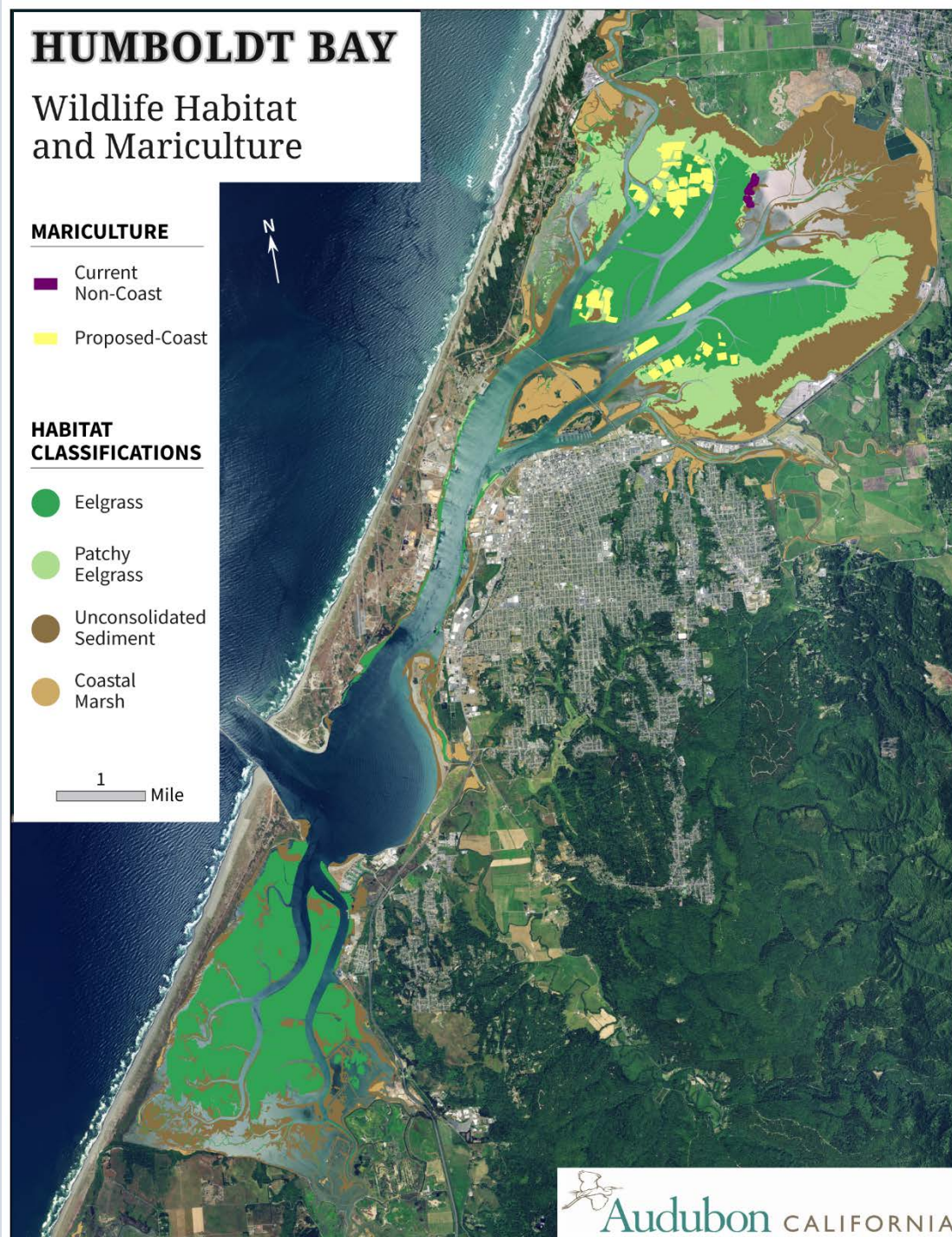
MARICULTURE

- Current Non-Coast
- Proposed-Coast

HABITAT CLASSIFICATIONS

- Eelgrass
- Patchy Eelgrass
- Unconsolidated Sediment
- Coastal Marsh

1 Mile



~50% of California's eelgrass