

Exploring the Living Seafloor: Southern California Expedition

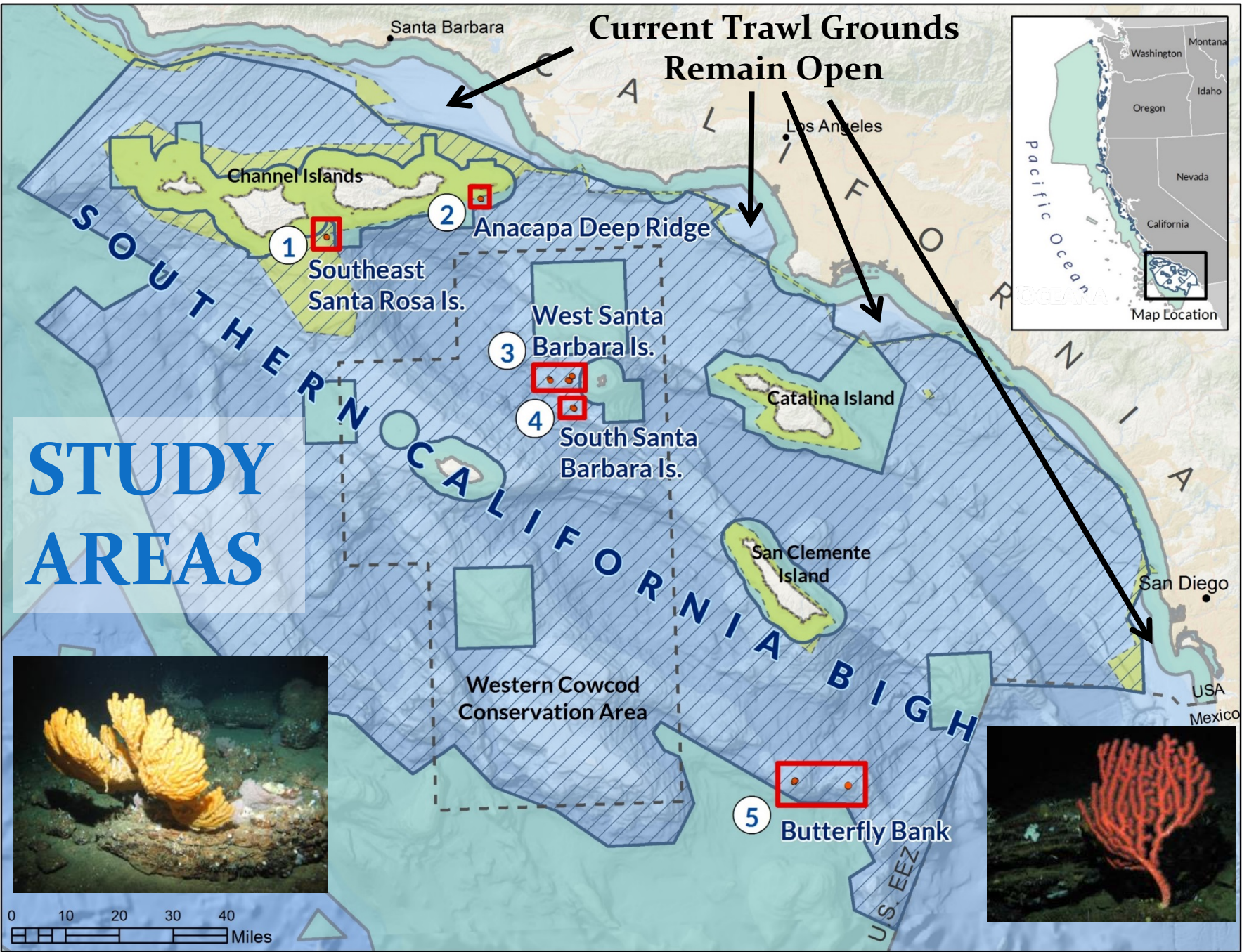


Ben Enticknap, Open Public Comment to
the Pacific Fishery Management Council

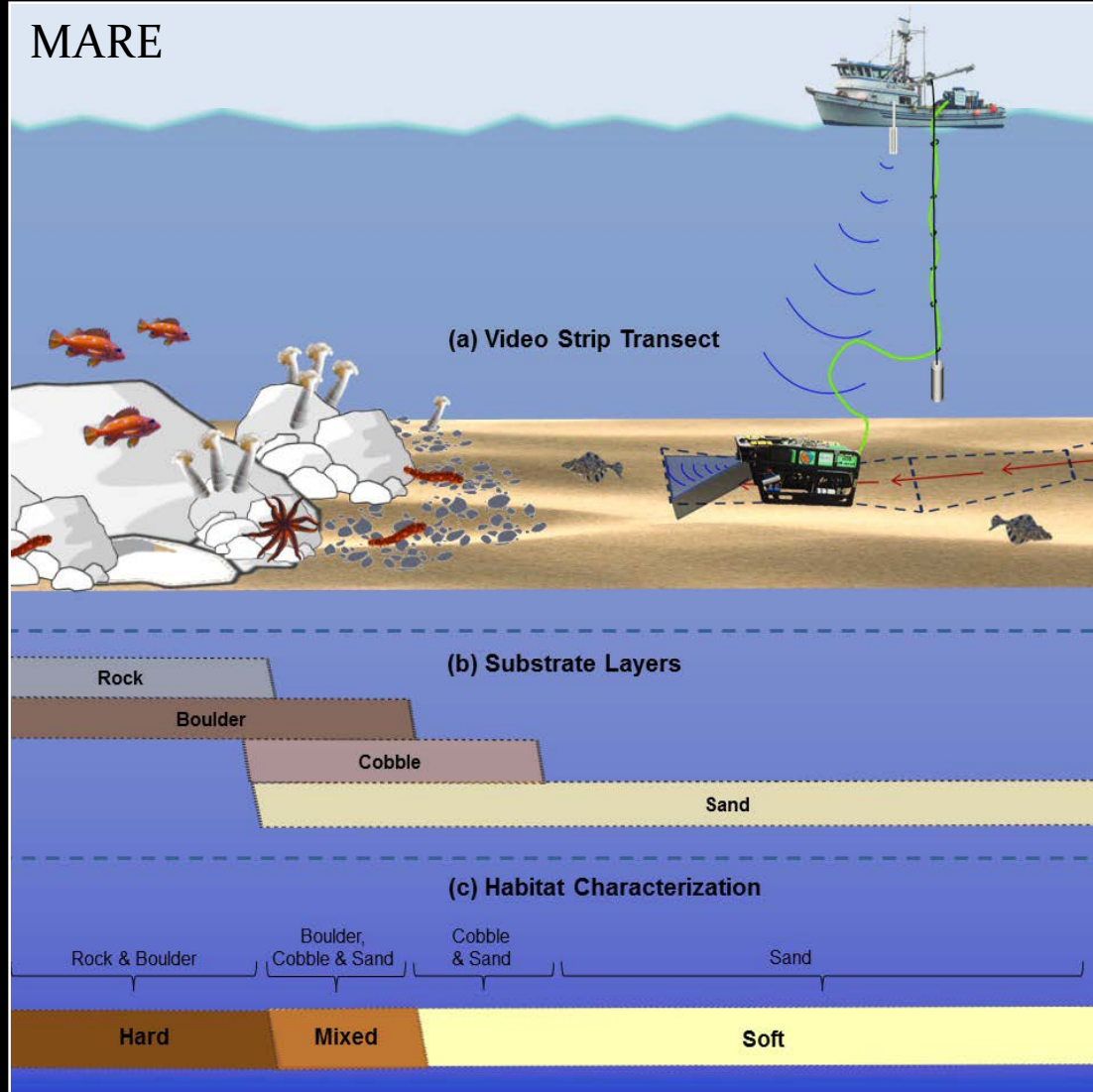
September 13, 2017

2016 Pacific Ocean Expedition

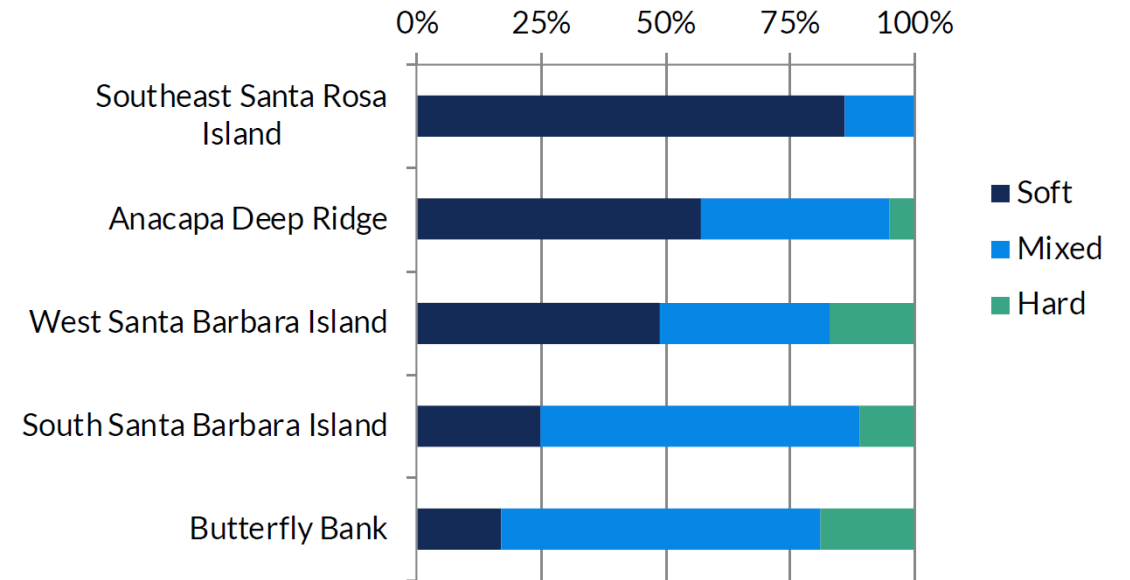




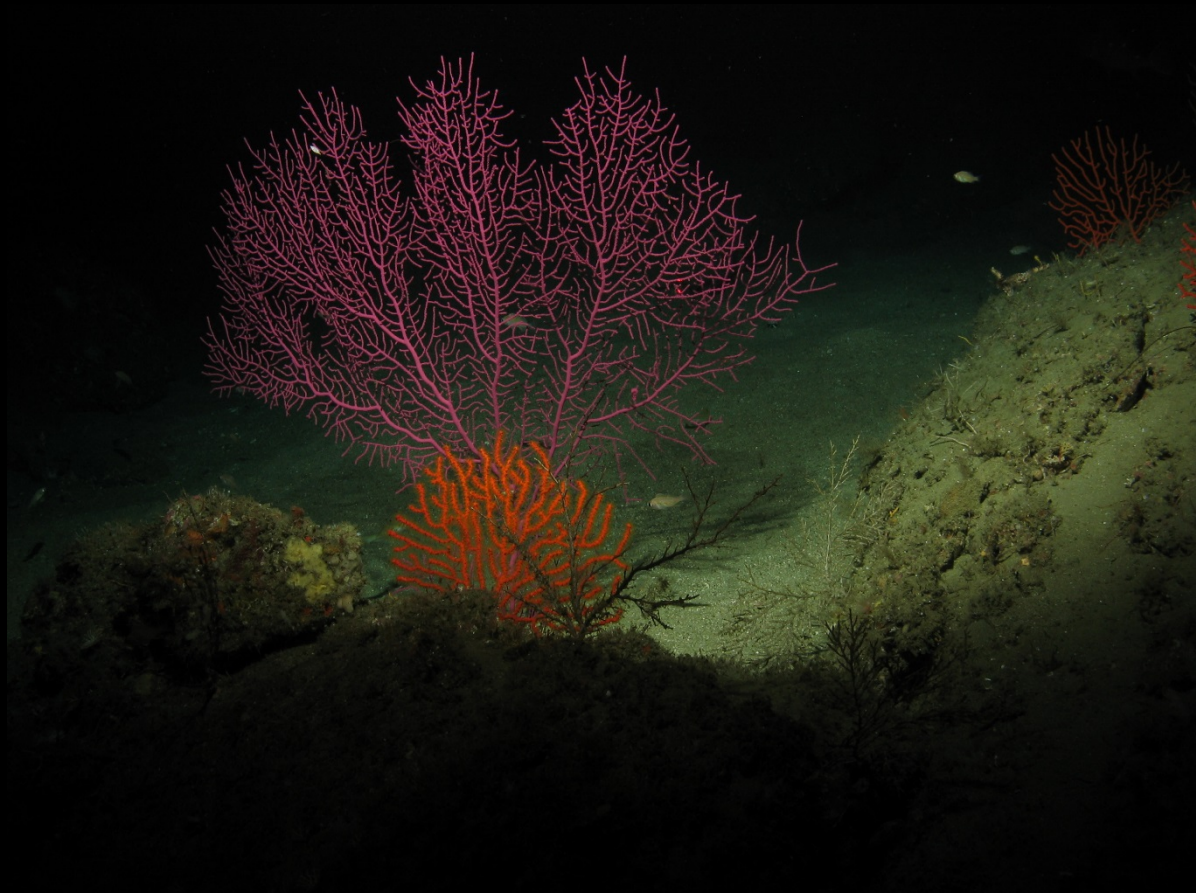
MARE

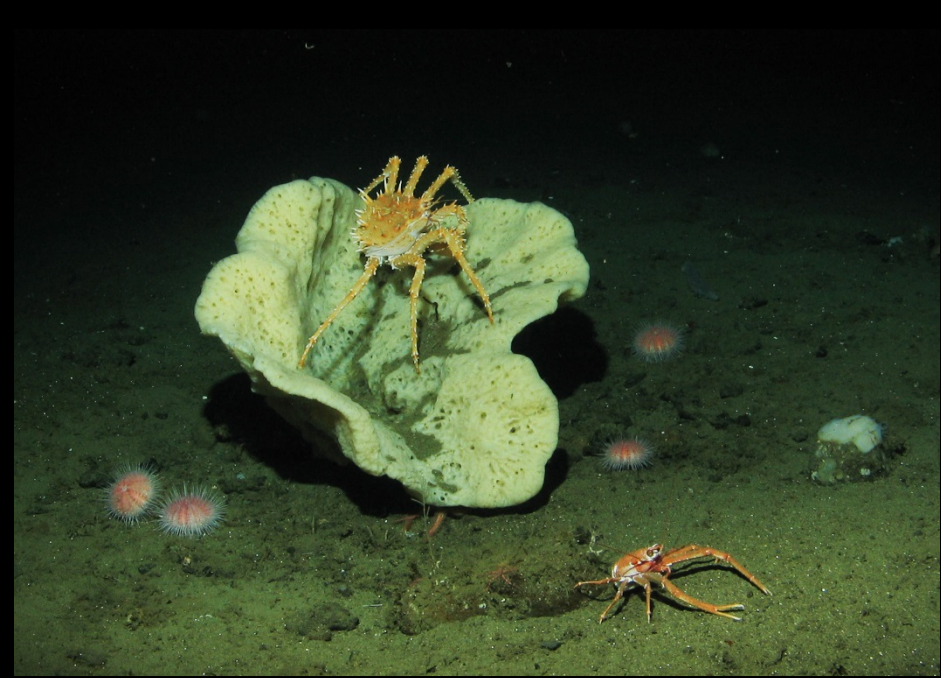
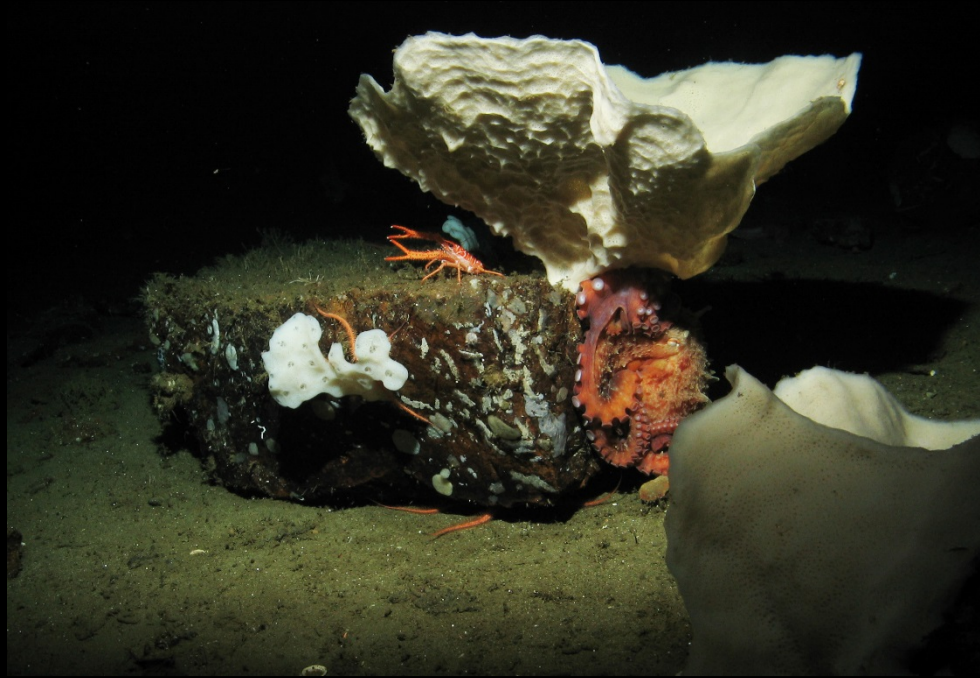


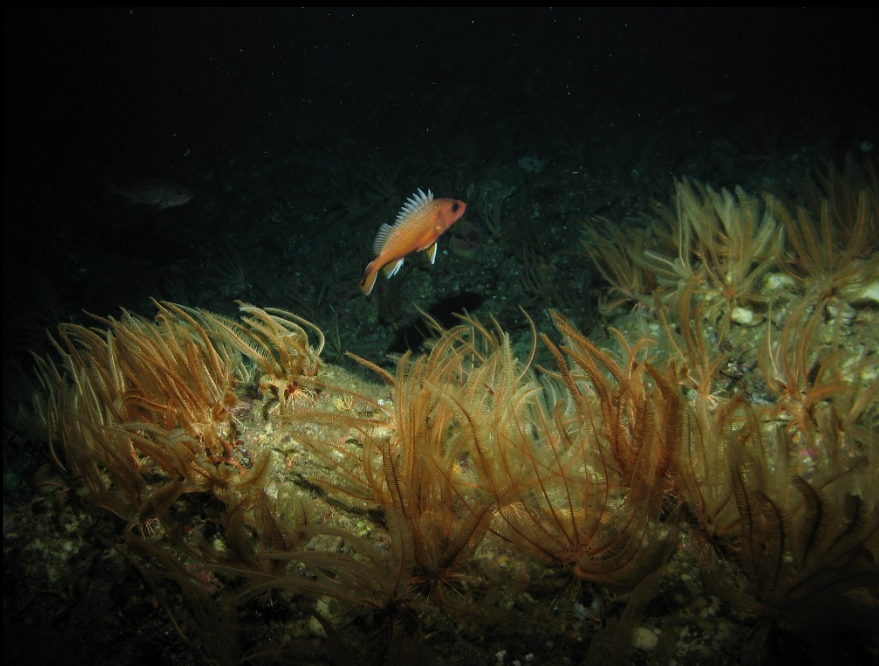
Physical Substrate

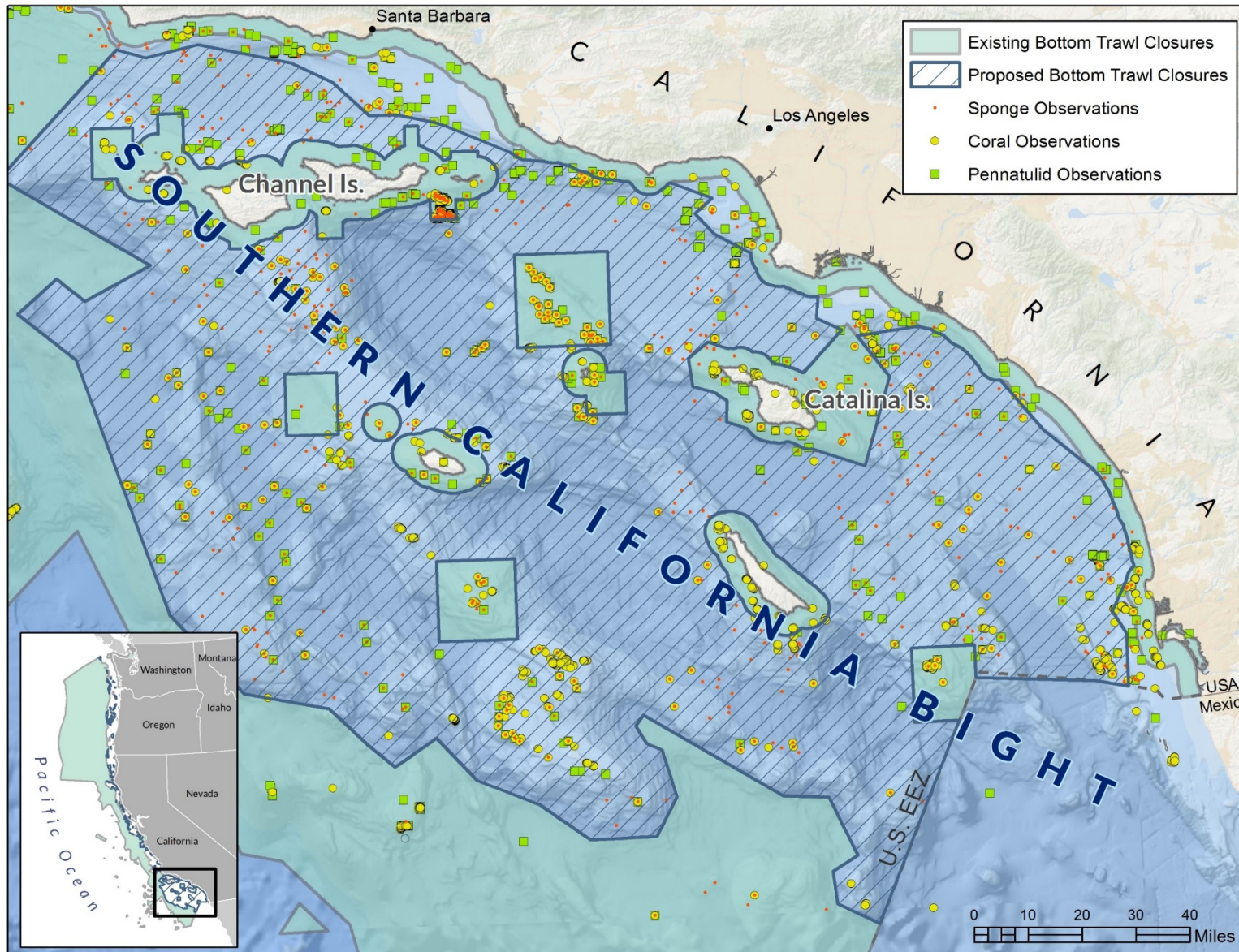












39 percent increase in coral and sponge observations inside the proposed Southern California Bight EFH conservation area.

Full report and more information at:

<http://usa.oceana.org/publications/reports/exploring-living-seafloor-southern-california-expedition>