

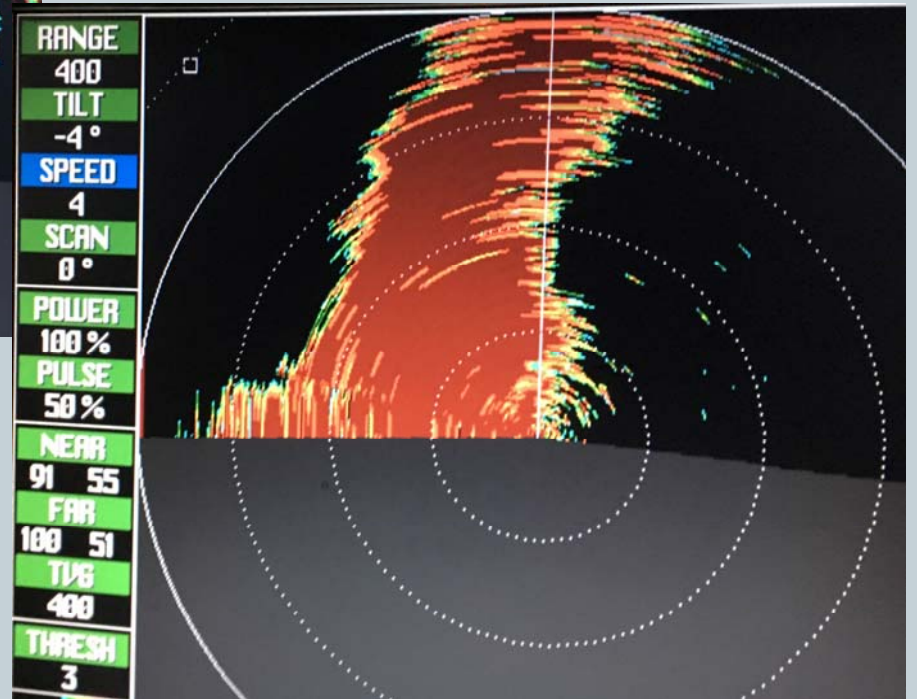
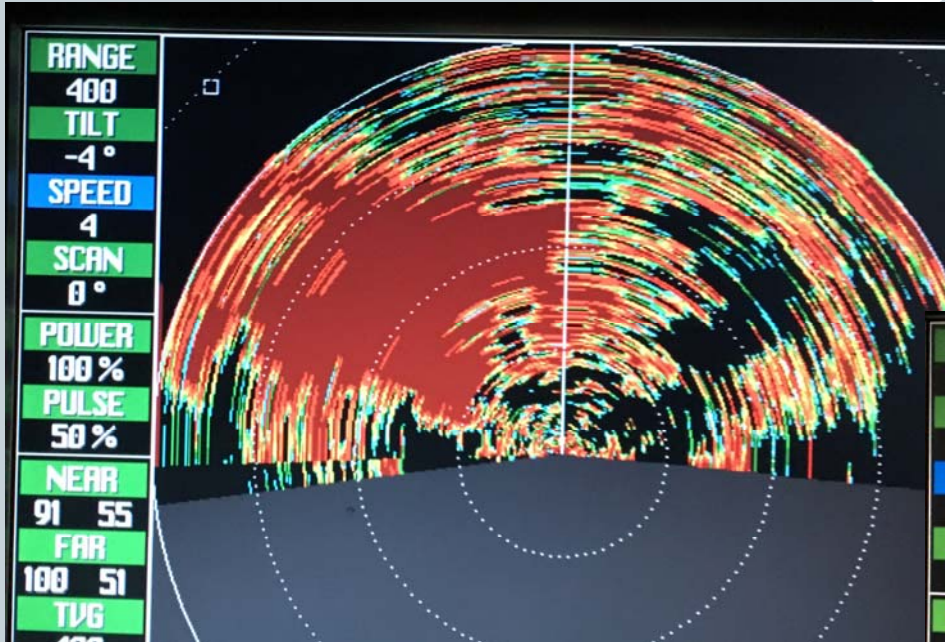
# Anchovy in Monterey Bay

Agenda Item G.2.b  
Supplemental Public Comment PPT 2  
(Guglielmo)  
April 2017

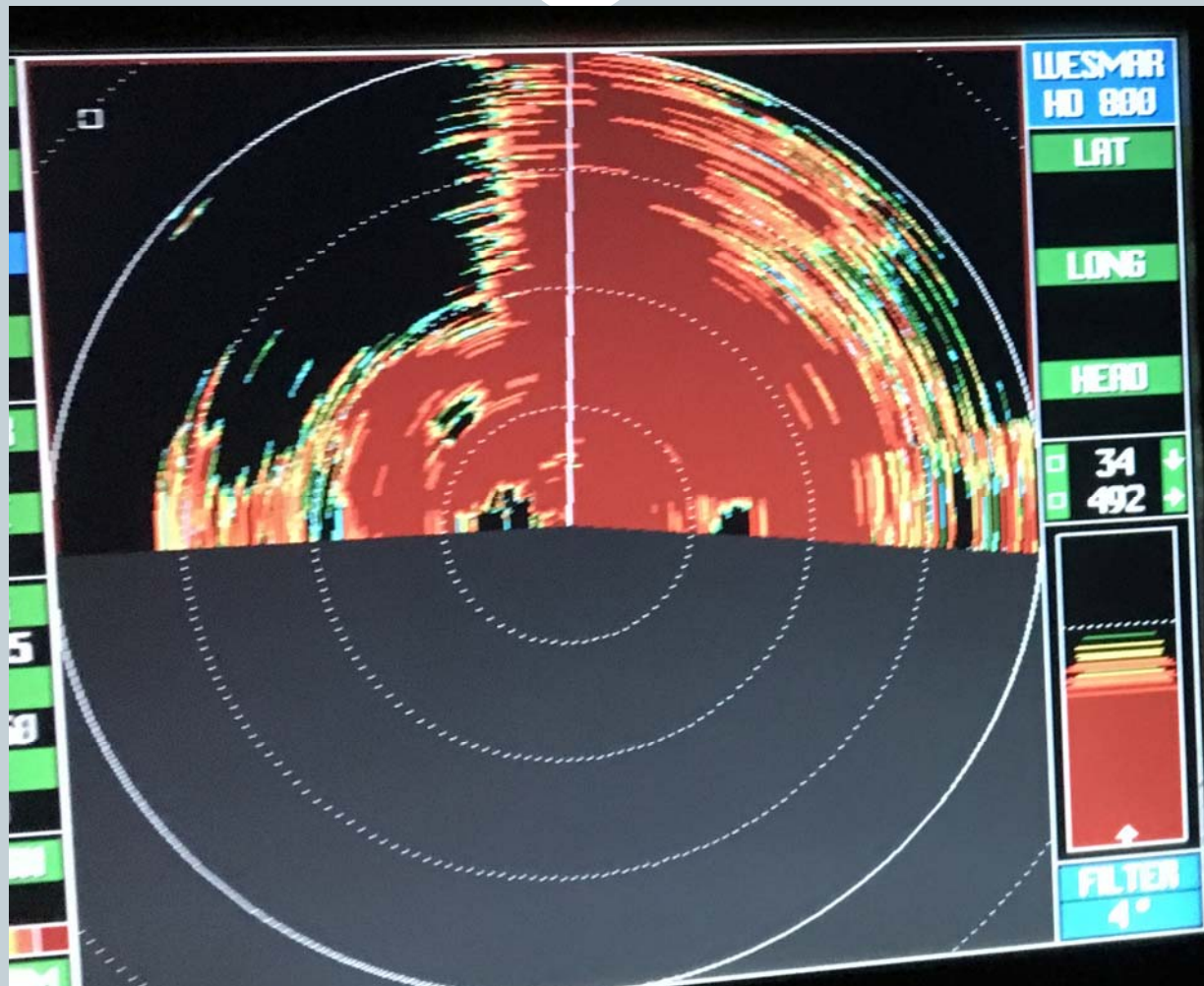


**RECENTLY  
OBSERVED  
BY NEIL  
GUGLIELMO**

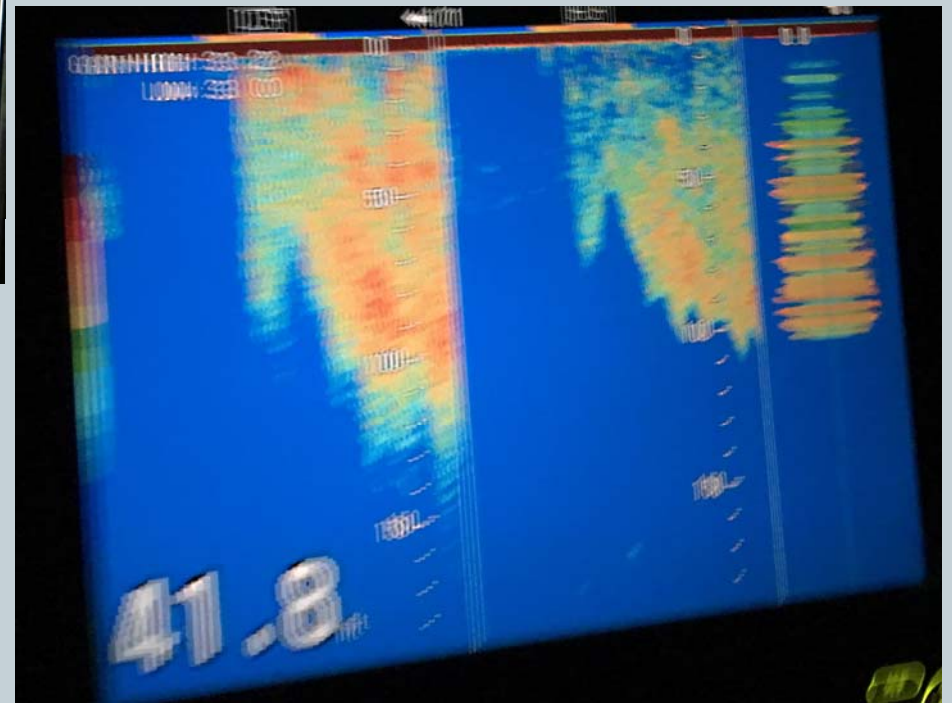
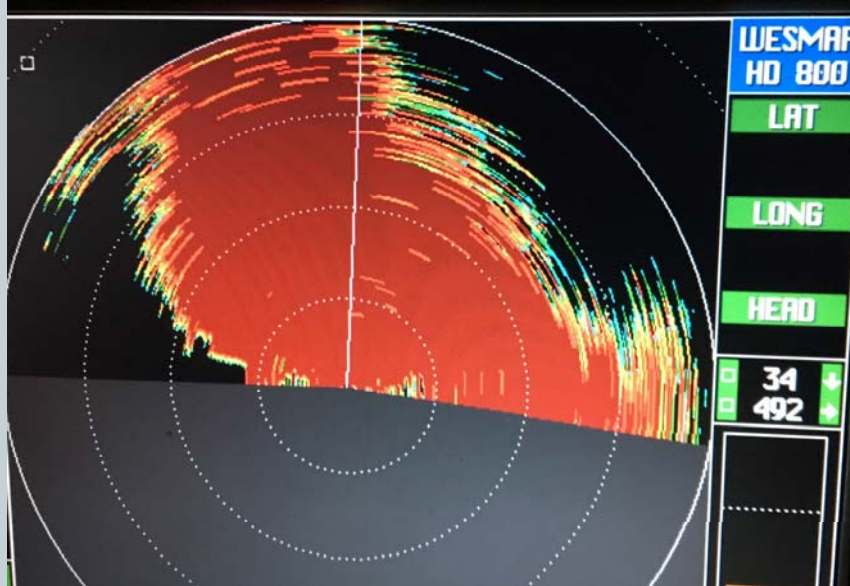
# Anchovies between Moss Landing and Salinas River – 4/3/17 @ 2 AM



# @300 ton Anchovy School off Salinas River 4/3/17

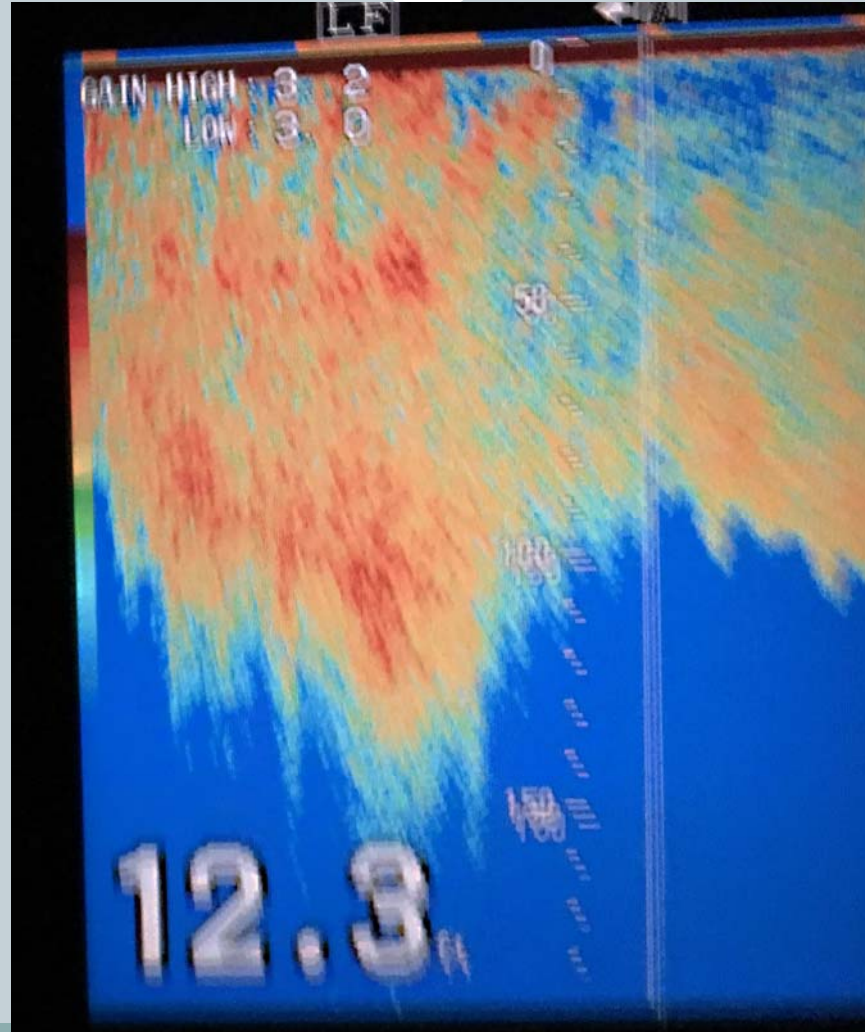


# Massive Scatter off Marina 4/3/17

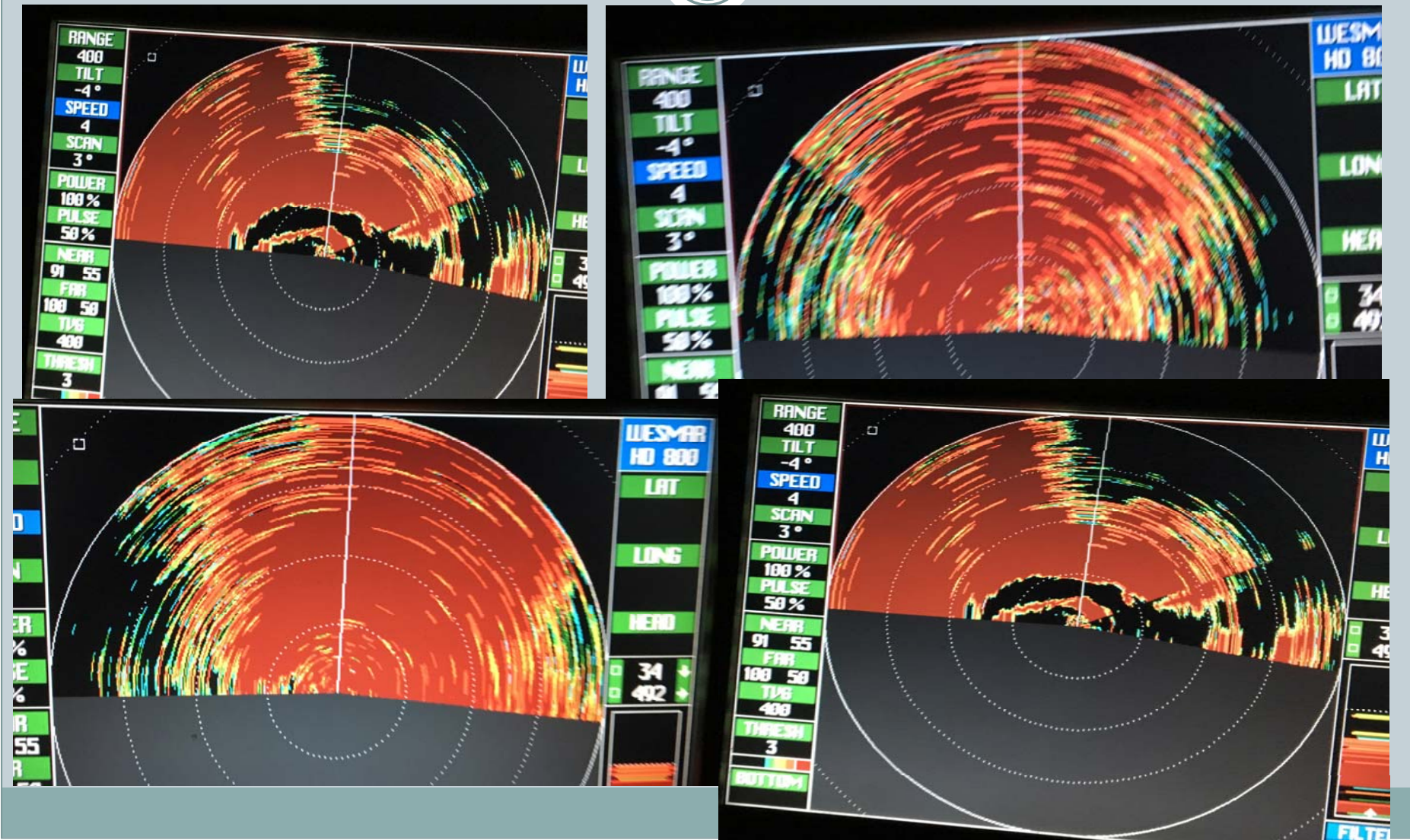


# Monterey 4/3/17 3 AM

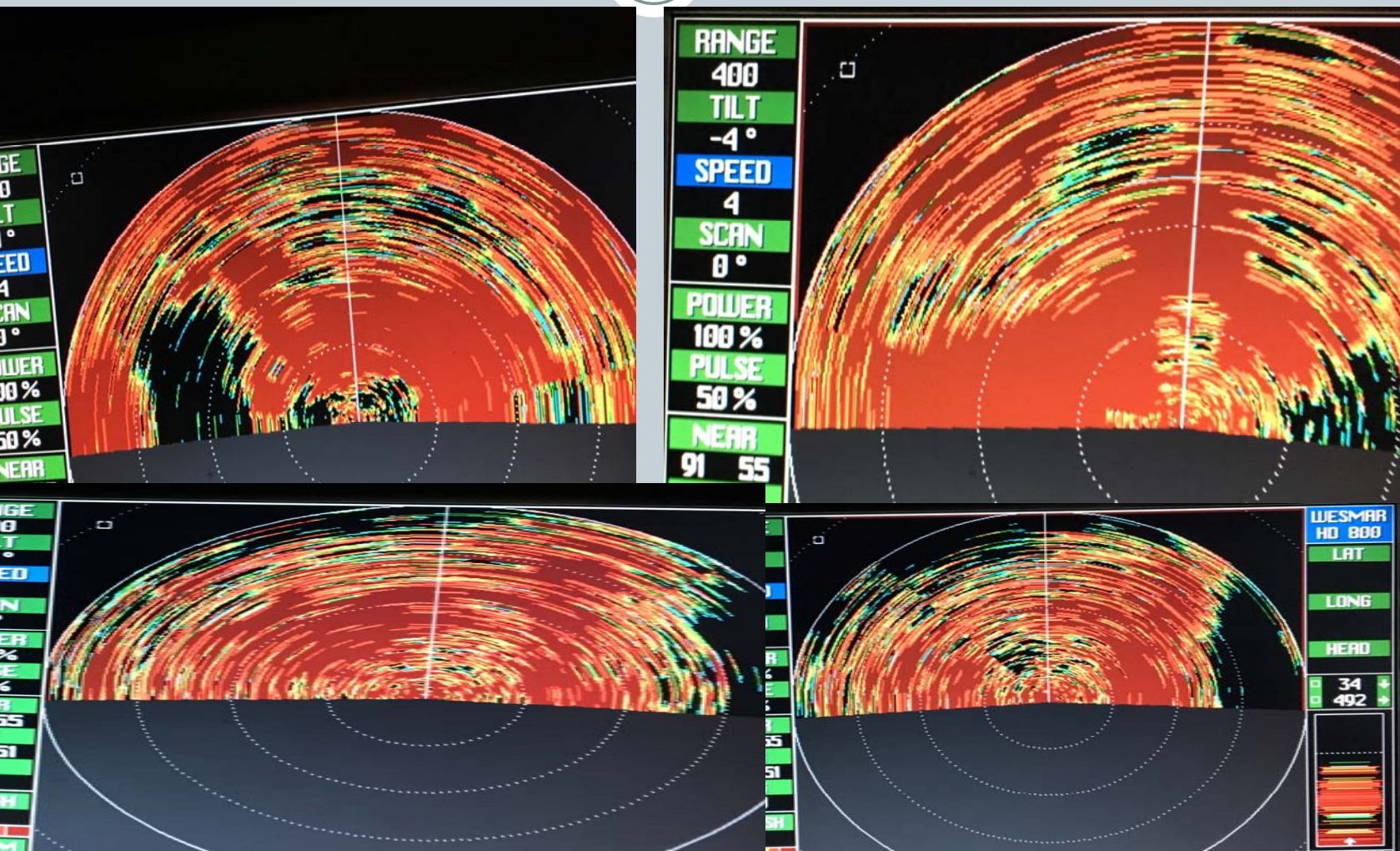
## Anchovy – hundreds of tons, large area



# 4 AM – Anchovies from UC Monterey heading toward Monterey 150 ft. of water



28/17 – **Sardine** schools Monterey Harbor to  
Port Ord, 110 ft water. Mixed sizes. Many tons



## To Summarize:



Thousands of tons of anchovy and sardine live in shallow water (and have been abundant since 2015)

- Not accounted for in NOAA surveys
- Not included in biomass estimates

Anchovies (and sardine) are critically important to CA's wetfish industry

Current anchovy harvest cap is ultra precautionary.

We support status quo anchovy management with 25,000 mt harvest cap.