



# Columbia River Inter-Tribal Fish Commission

## Salmon Restoration in the Columbia River Basin



*Columbia River Inter-Tribal Fish Commission*



First  
Foods

Focus for  
Recovery  
Efforts



# Recovery Efforts Focused in Four Tribes' Ceded Lands

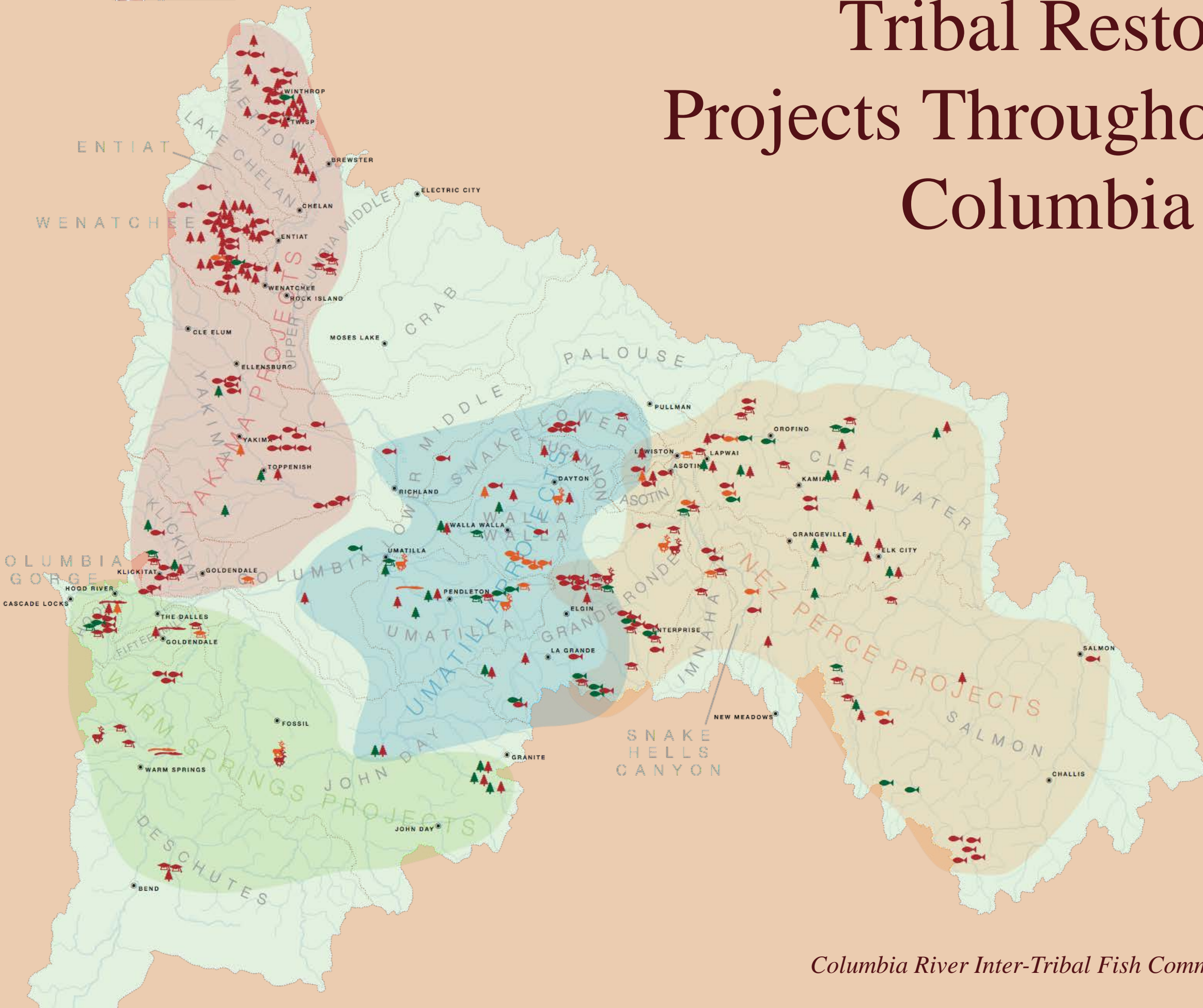
Combined, the land comprising this ceded area:


- 66,591 square miles
- More than 25% of the entire Columbia Basin
- 55% of the rivers and streams that are still accessible to salmon
- Includes almost all of the salmon habitat above Bonneville Dam





# Tribal Restoration Projects Throughout the Columbia Basin





# Many Projects are through the Pacific Coastal Salmon Recovery Fund (PCSRF)

Funded by NOAA Fisheries

2000-2016

To-date,

**339**

PCSRF projects have been implemented



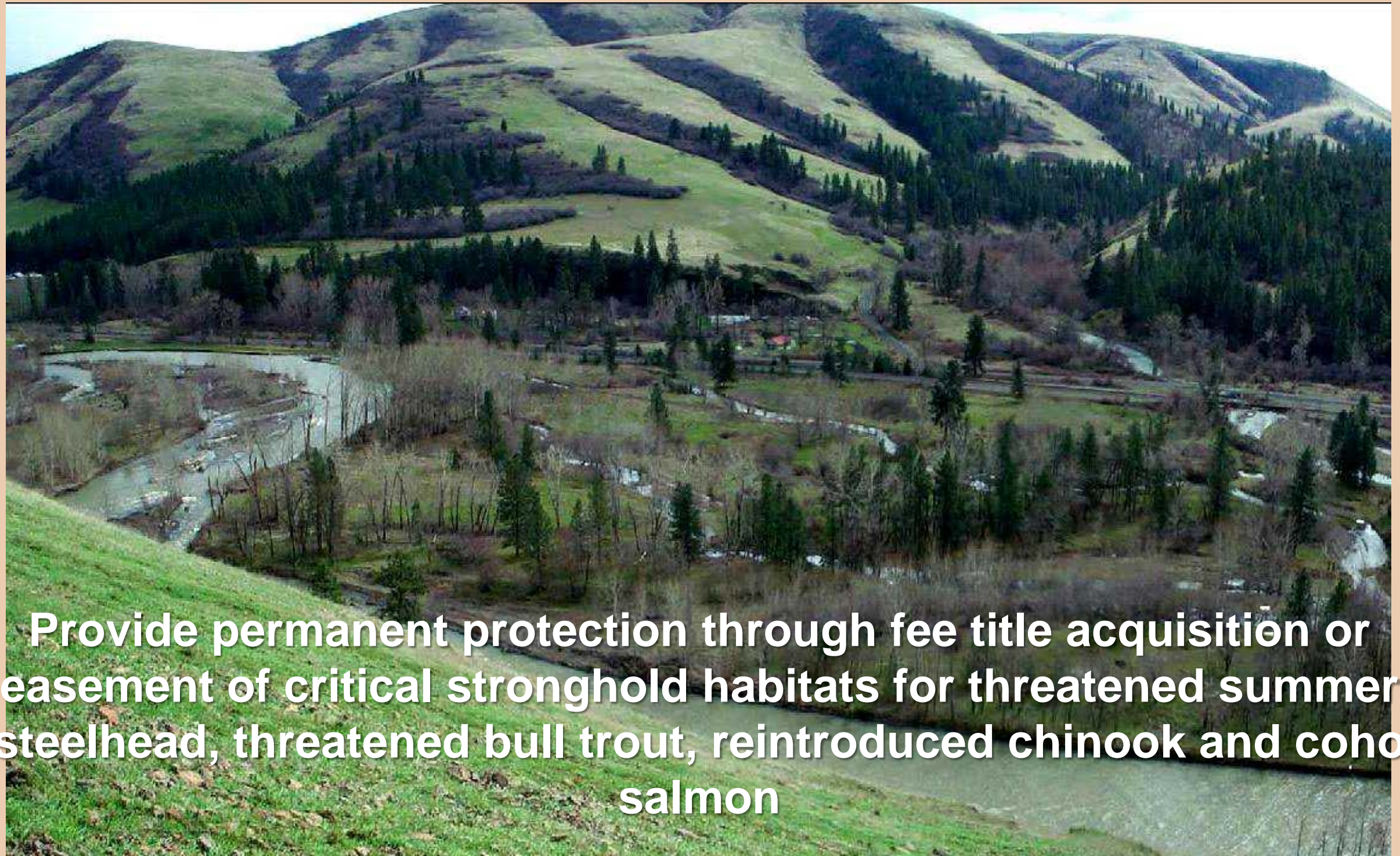
# Tribal PCSRF Successes

- 11,170 acres acquired
- 408 stream miles treated
- 39 fish passage barriers removed
- 1.2 million fry/smolt released
- 4,475 stream miles monitored
- 256 wetland acres treated





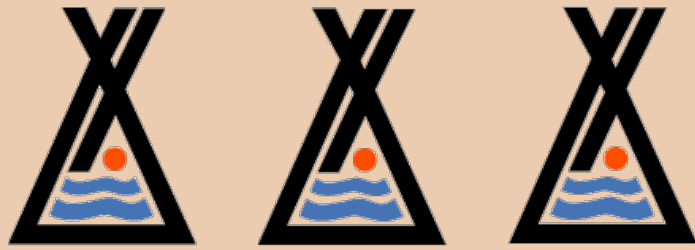
# Land Acquisition



**Provide permanent protection through fee title acquisition or easement of critical stronghold habitats for threatened summer steelhead, threatened bull trout, reintroduced chinook and coho salmon**

*Umatilla River at Iskuulpa Creek*





Confederated Tribes of the Warm Springs  
Indian Reservation of Oregon

# Habitat Restoration

*East Fork Hood  
River Mills Large  
Wood Placement  
Project*



*Columbia River Inter-Tribal Fish Commission*





# Warm Springs Problem Roads Project

## Project Elements:

- Remove Culverts
- Re-Contour Road to control run-off and erosion
- Remove Bridge that is impeding floodplain processes. Construct 300 feet of new side channel in former levee location
- Construct one mile of new road outside of riparian areas in order to connect traffic to the reroute







# Clearwater Coho Reintroduction



5,000

Reintroduction begins



2013 2014

*Columbia River Inter-Tribal Fish Commission*





# Yakima River Sockeye Re- Introduction



- Adults are transferred from Priest Rapids dam and appear to be forming two separate localized populations.
- Natural origin fish from Cle Elum Lake have begun to return in the past few years.
- Some of the first sockeye to spawn in the Cle Elum River in over 100 years (Top)
- Temporary flume for outmigrating sockeye at Cle Elum Dam (Bottom)



# CTUIR Native Plant Nursery



Support habitat restoration projects in the Umatilla, Walla Walla, John Day and Grande Ronde Basins with high quality, locally adapted native plants.

Provide tribal program partnerships and plant propagation training for tribal members.



# Protecting our First Foods

