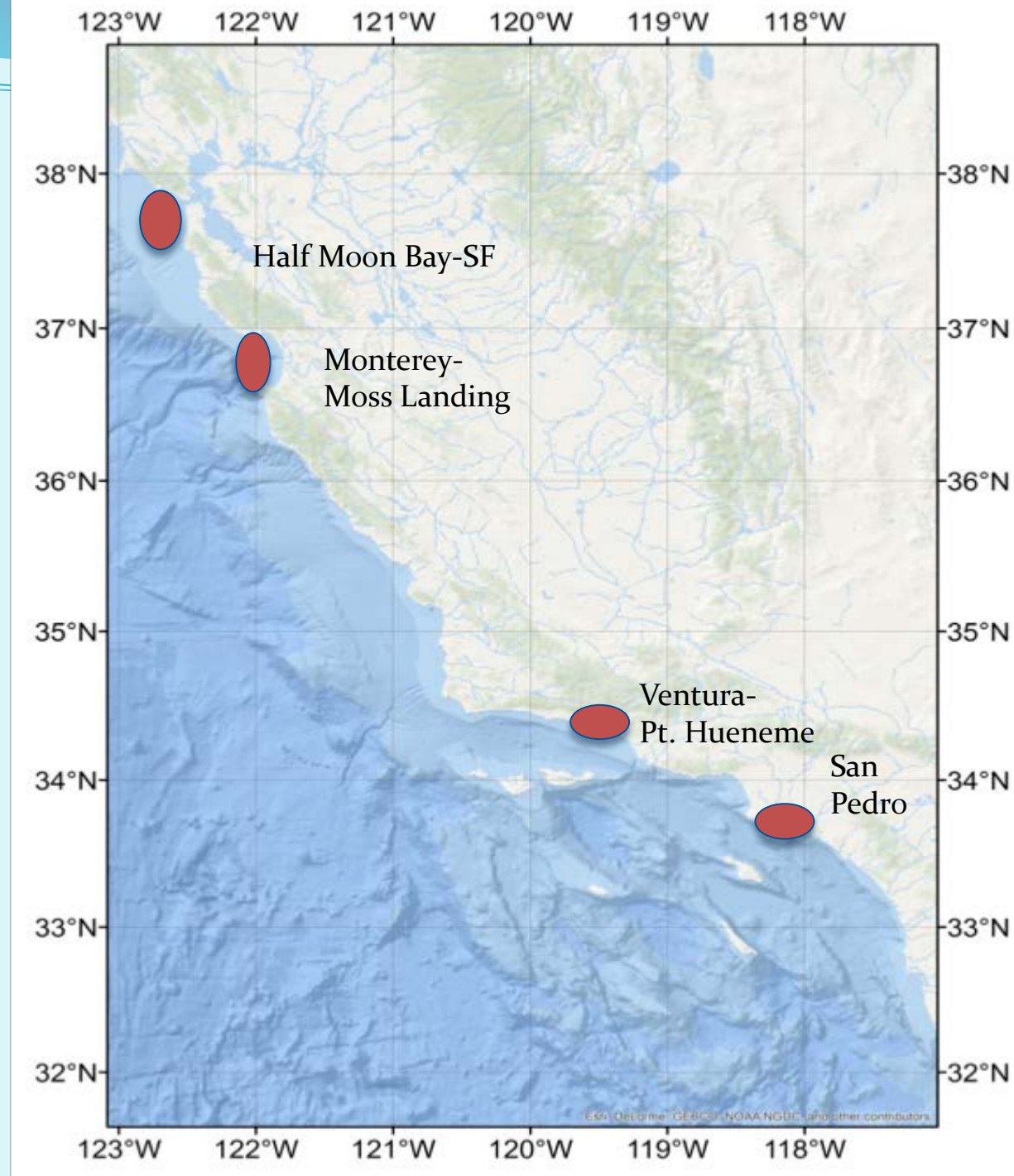


Observations of Anchovy Schools in the SC Bight

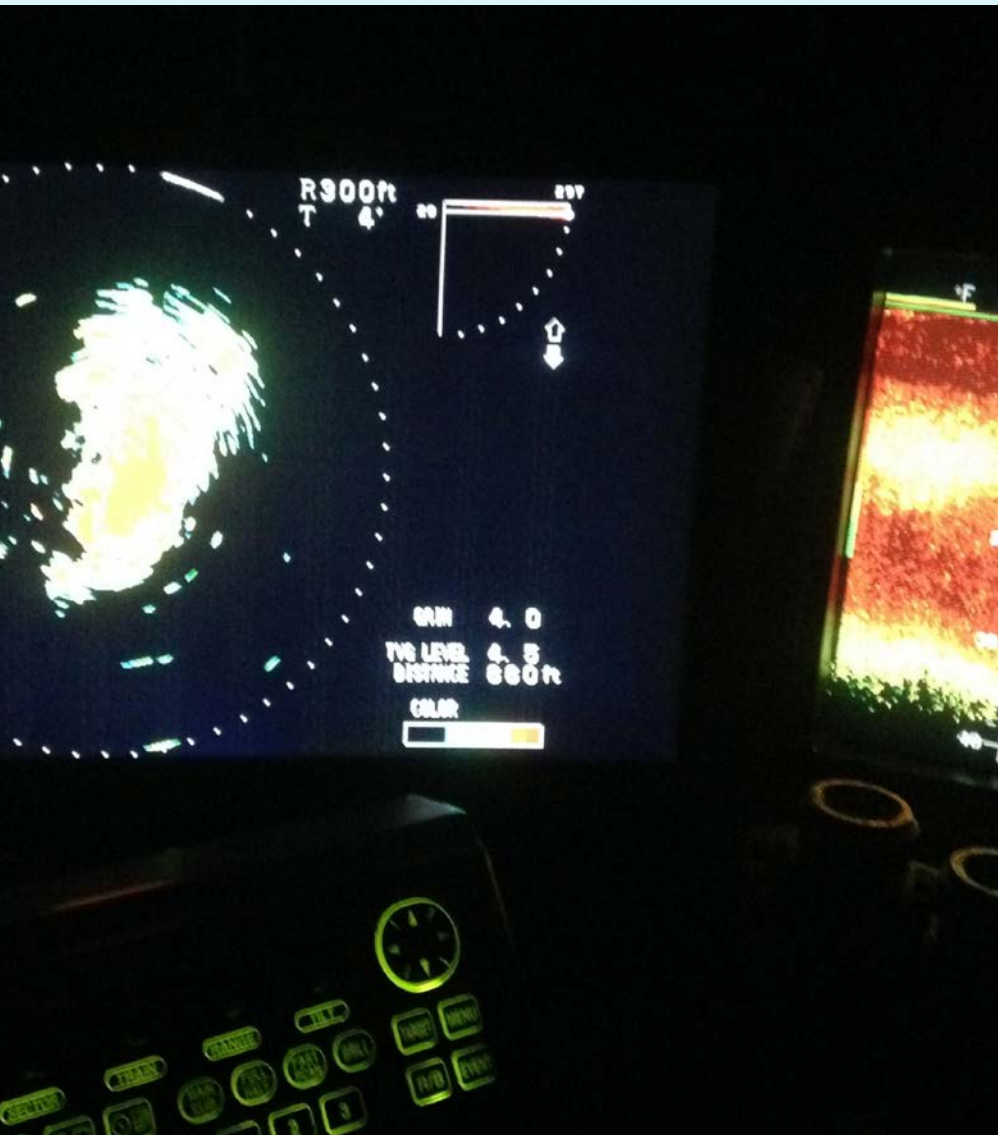
Observed on the FV Eileen

Anchovy fished in only a few spots

- Fishermen target anchovy close to harbors
- Most of coast unfished
- Huge anchovy schools extend for miles in unfished areas



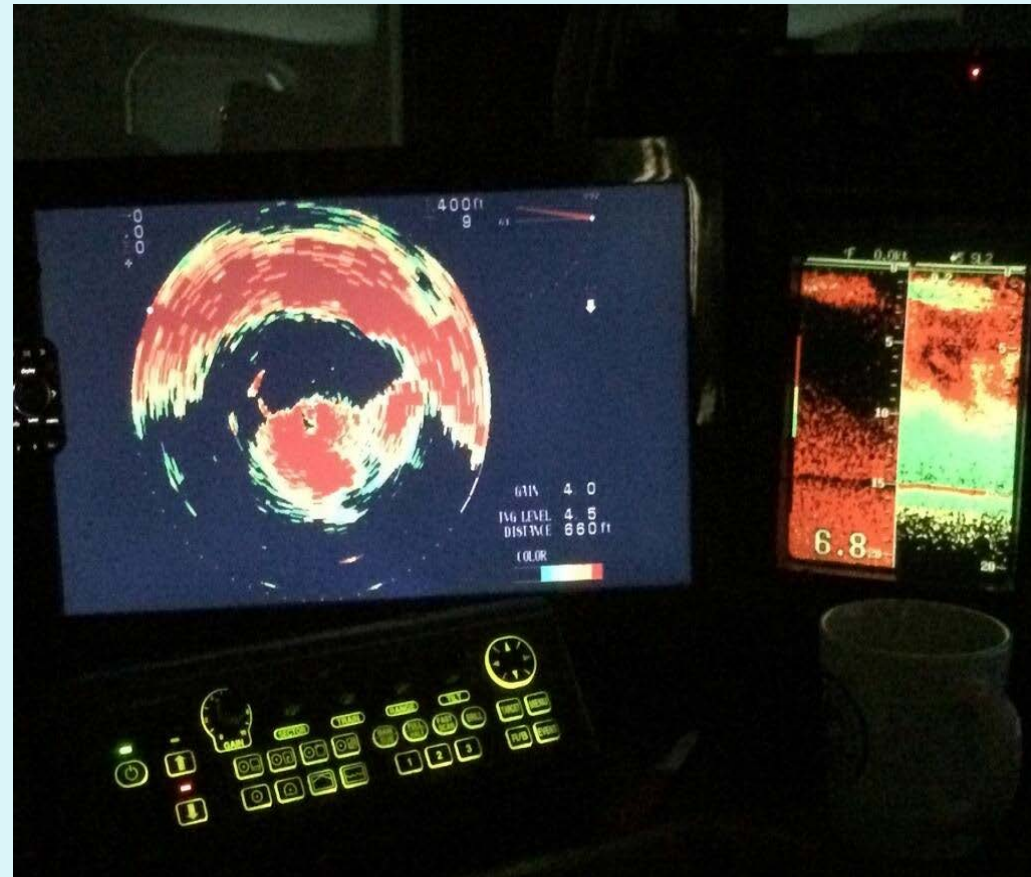
Sonar and Fathometer Readings



- Anchovy school depth from surface to 40 fathoms
- Multiple observations virtually every night all summer

Sonar and Fathometer Readings

- Sonar image represents hundreds of tons of anchovies



Anchovy breezing on surface

