

NOAA
FISHERIES

National Standard 1 Guidelines

Summary of 2016 Revisions

Outline

1. Background
2. Basis for Revising NS1 Guidelines
3. Objectives
4. Features
5. Summary



NOAA FISHERIES

473 Stocks and stock complexes managed under
46 Fishery Management Plans

2 Stocks rebuilt

Commercial fishing
Recreational fishing &
Seafood

in 2014



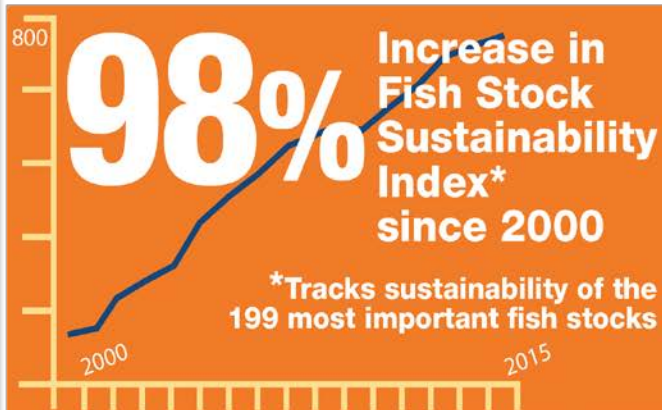
91%

Federally managed stocks NOT on overfishing list



84%

Federally managed stocks NOT on overfished list



generated
214
billion dollars

and supported

1.83
million jobs



NOAA FISHERIES

National Standard 1 (NS1)

- National Standard 1 is a critical component to the MSA's success
- Requires that U.S. fisheries management:
 - A. Prevent overfishing
 - B. Achieve optimum yield
- NS1 guidelines provide guidance on *how* to achieve requirements (A) and (B)

Basis for Action

- 2007 MSA Reauthorization
 - Introduced annual catch limits (ACLs) and accountability measures (AMs) requirements
- ACLs and AMs transformed federal fisheries



2016 Revisions to the NS1 Guidelines

Objectives:

1. Improve & streamline guidelines
2. Address experience gained during implementation of ACLs & AMs
3. Provide flexibility to address management issues within current statutory limits

Do **not** require Councils to revise their current FMPs

Features of NS1 Final Rule

1. Increasing stability to fisheries
2. Increasing flexibility in rebuilding plans
3. Determining adequate progress in rebuilding
4. Determining which stocks require federal management
5. Clarifying OY & advancing ecosystem-based fisheries management (EBFM)

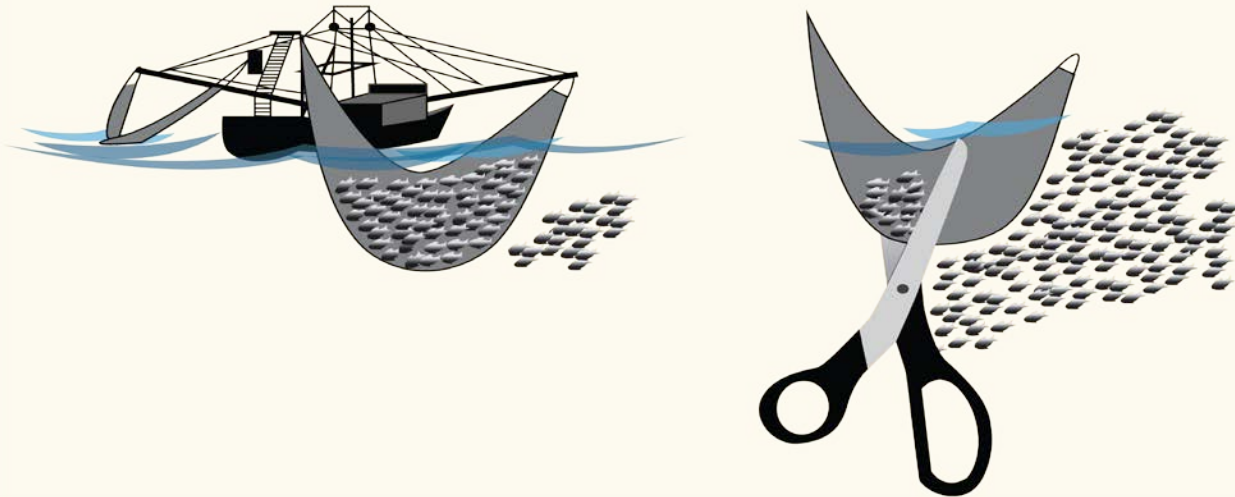
Increasing stability to fisheries

- A. Phasing-in changes to catch levels
- B. Carrying over unused quota into the next year
- C. Multi-year overfishing status determinations

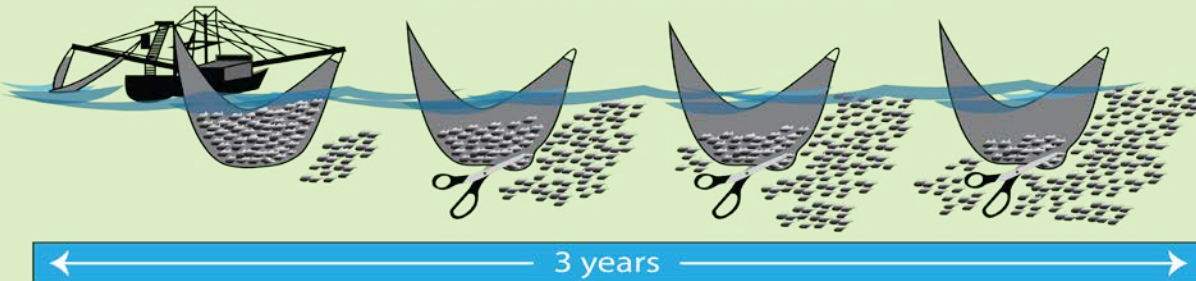


Phasing-in changes to catch levels

BEFORE NS1 revision: Catch limit immediately reduced to lowest level



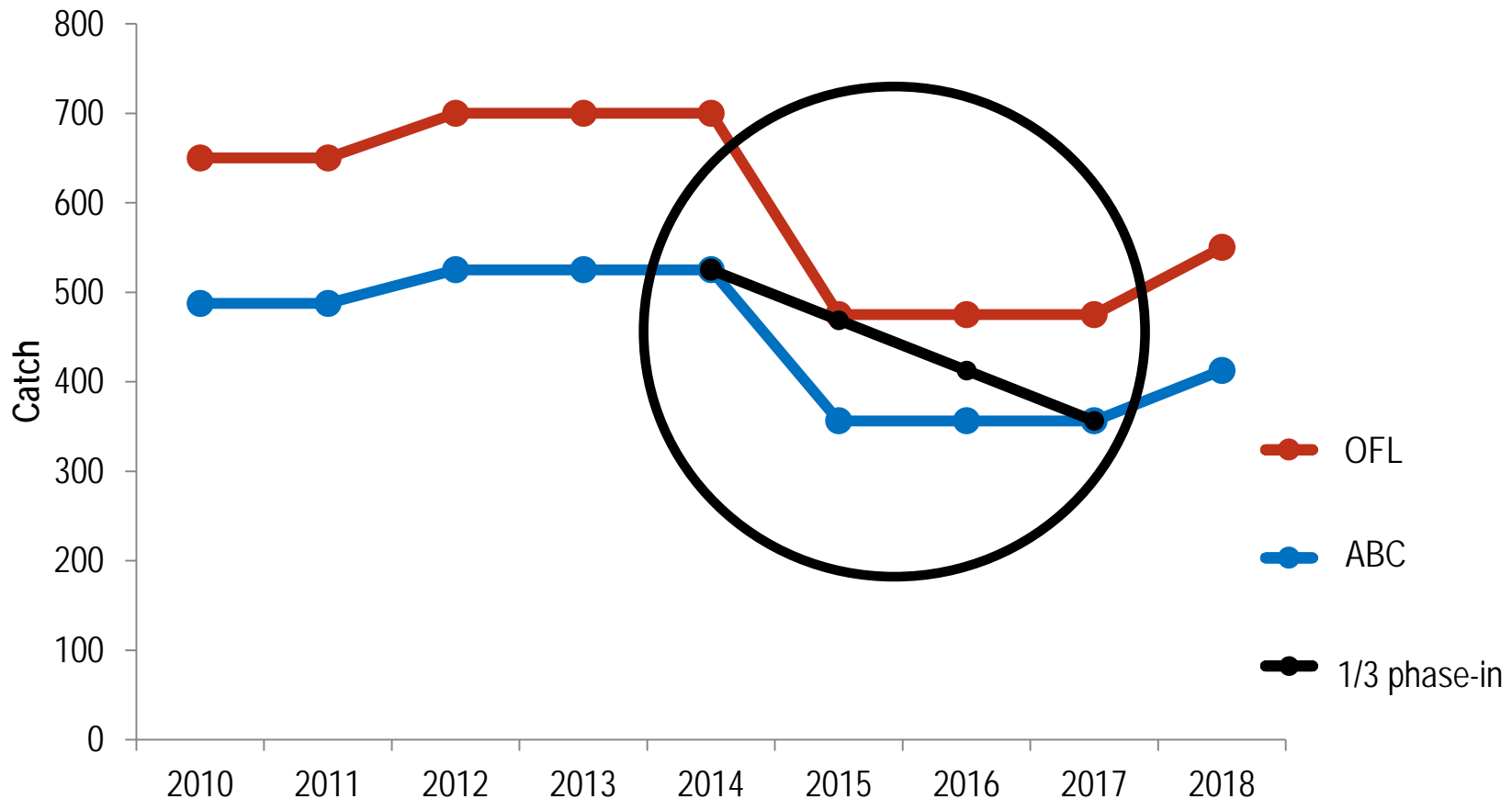
AFTER NS1 revision: Catch limit gradually reduced to lowest level*



*As long as overfishing is prevented

Phasing-in changes to catch levels

Must prevent overfishing each year



Increasing stability to fisheries

A. Phasing-in changes to catch levels

B. Carrying over unused quota into the next year

C. Multi-year overfishing status determinations

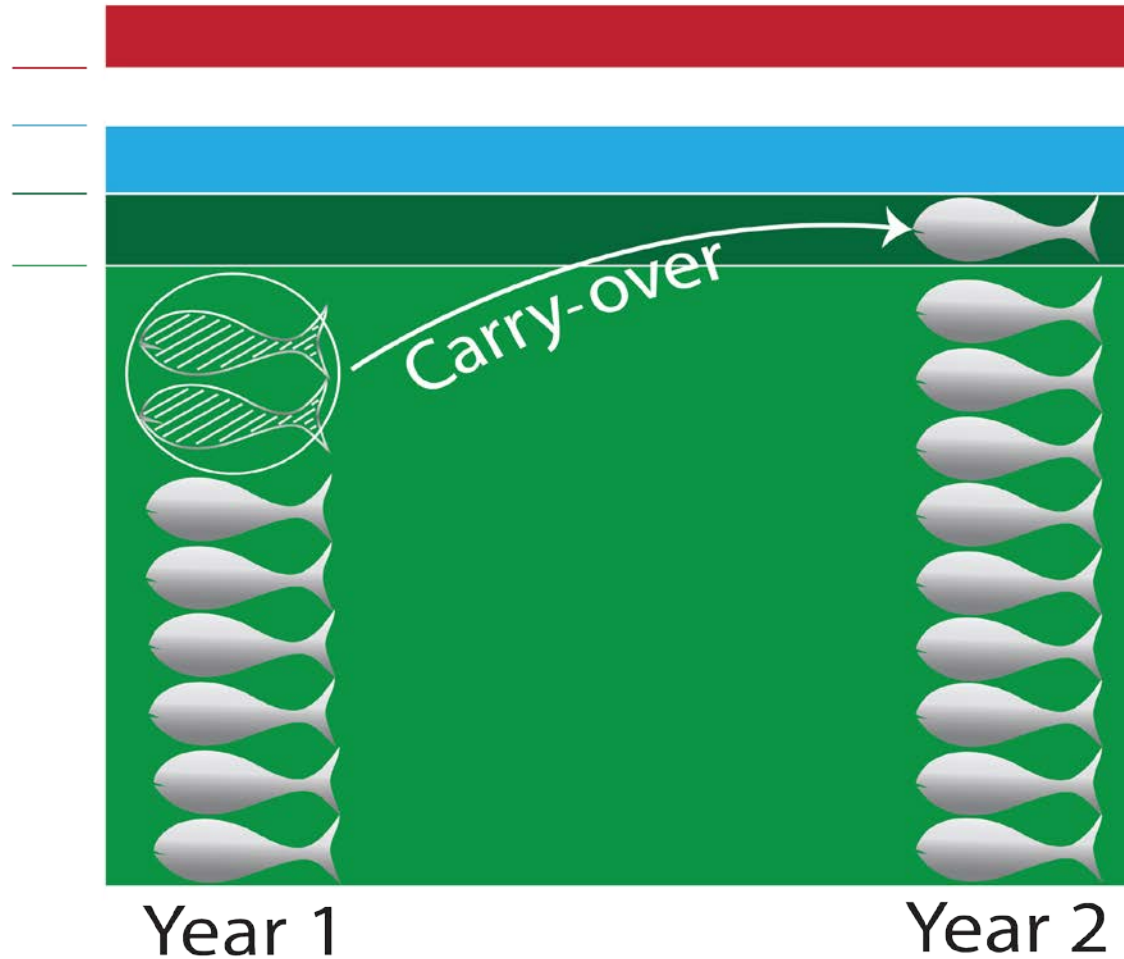


Carry-Over Approach #1: Utilizing ACL buffer

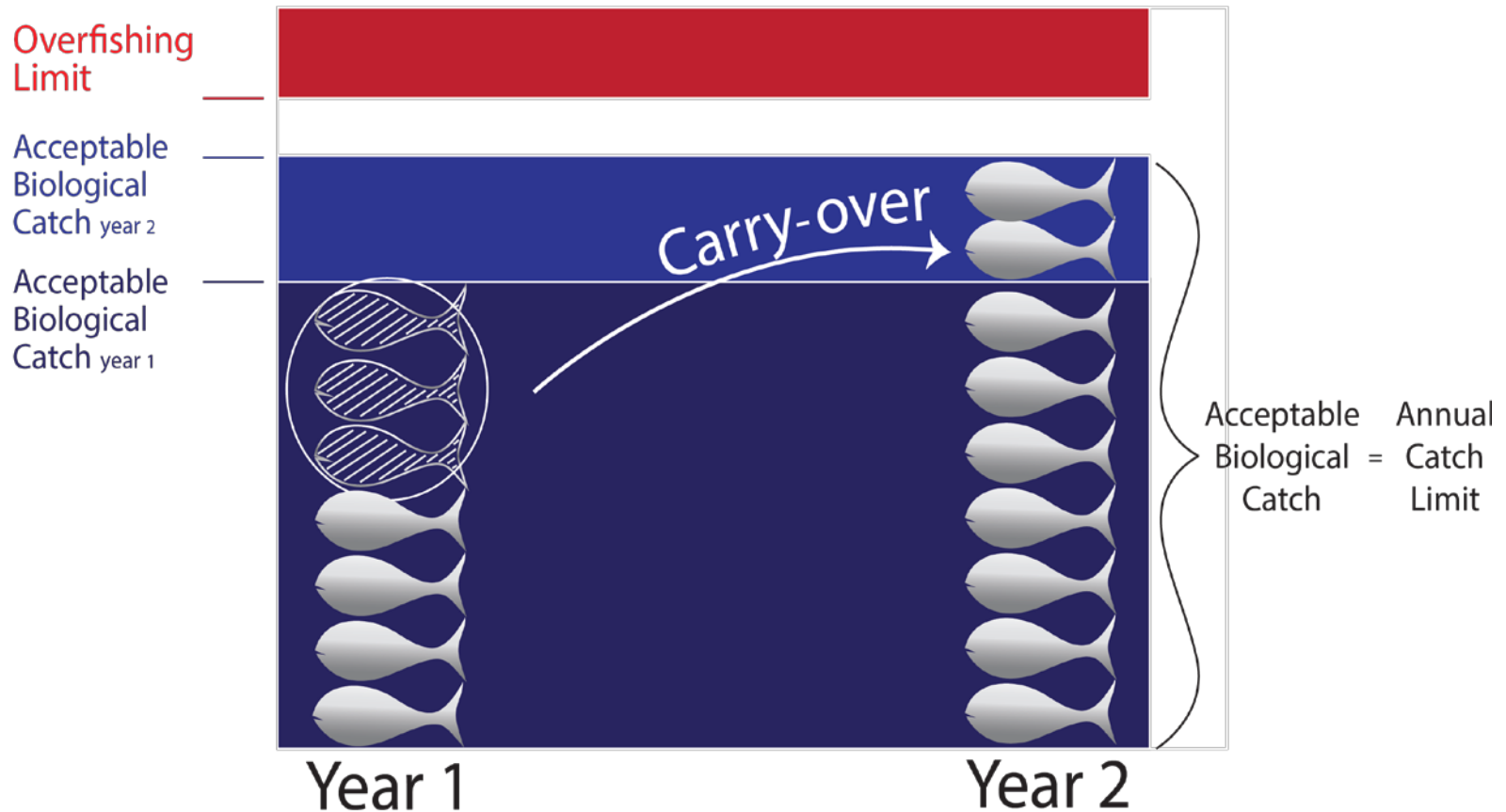
Overfishing
Limit

Acceptable
Biological
Catch

Annual
Catch
Limit year 2
Annual
Catch
Limit year 1



Carry-Over Approach #2: ABC Control Rule



Consider the stock's **condition** & the **reason** for the underage prior to carrying-over

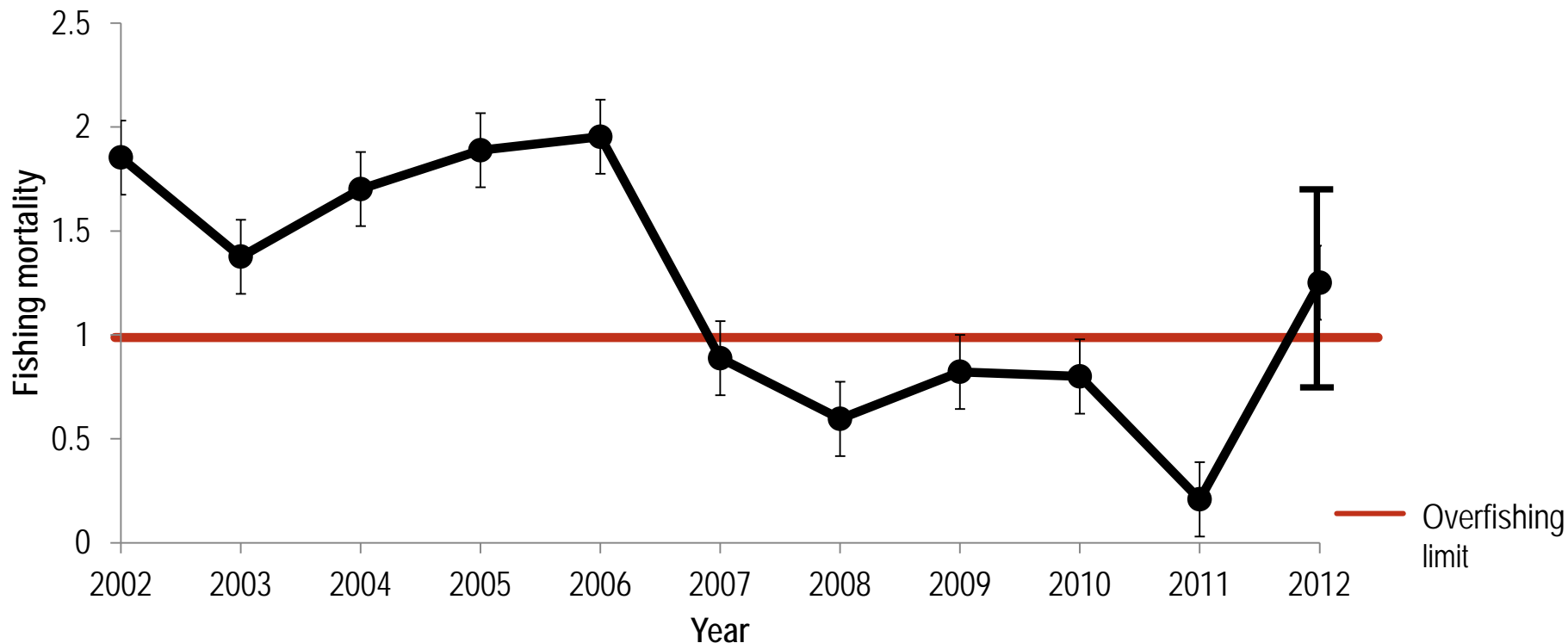
Increasing stability to fisheries

- A. Phasing-in changes to catch levels
- B. Carrying over unused quota into the next year
- C. Multi-year overfishing status determinations



Multi-year overfishing status determinations

- Agency determines stock status annually
- Last year of data is often the most uncertain



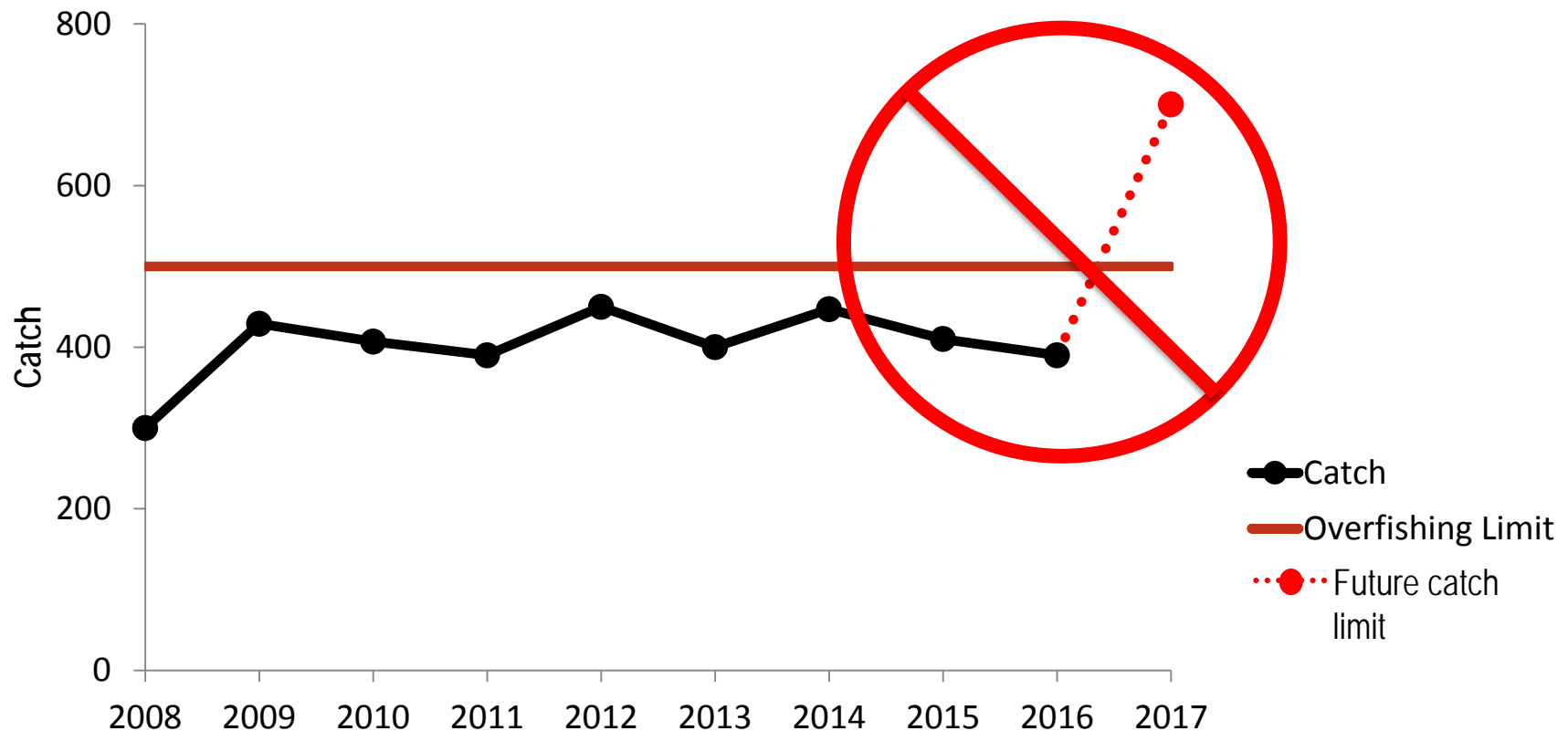
Multi-year overfishing status determinations

- When data is uncertain, overfishing status determinations may be based on a 3 year average
- Increases reporting consistency



Multi-year overfishing status determinations

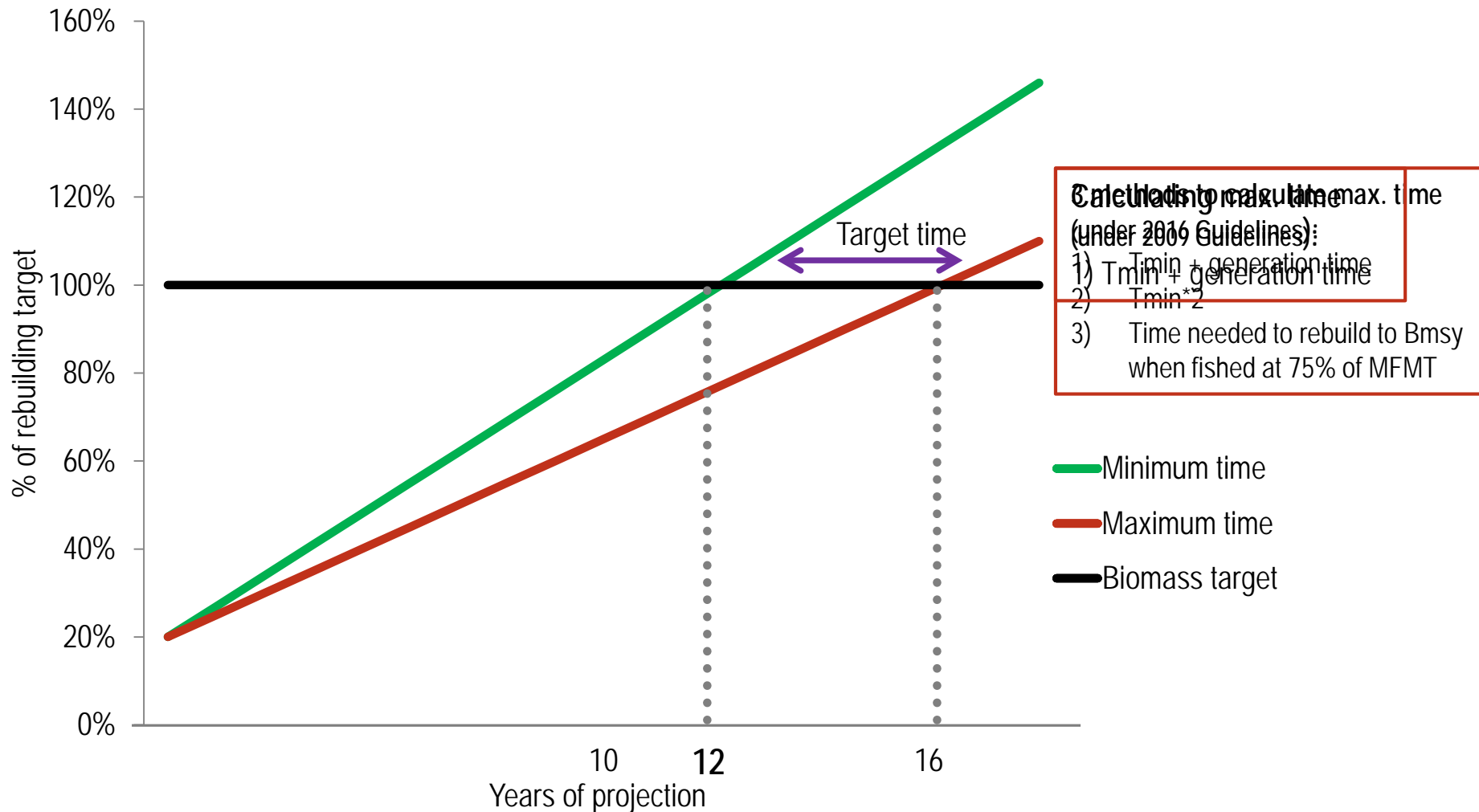
- Provision does not allow: setting future annual catch limits at levels that do not prevent overfishing



Features of NS1 Final Rule

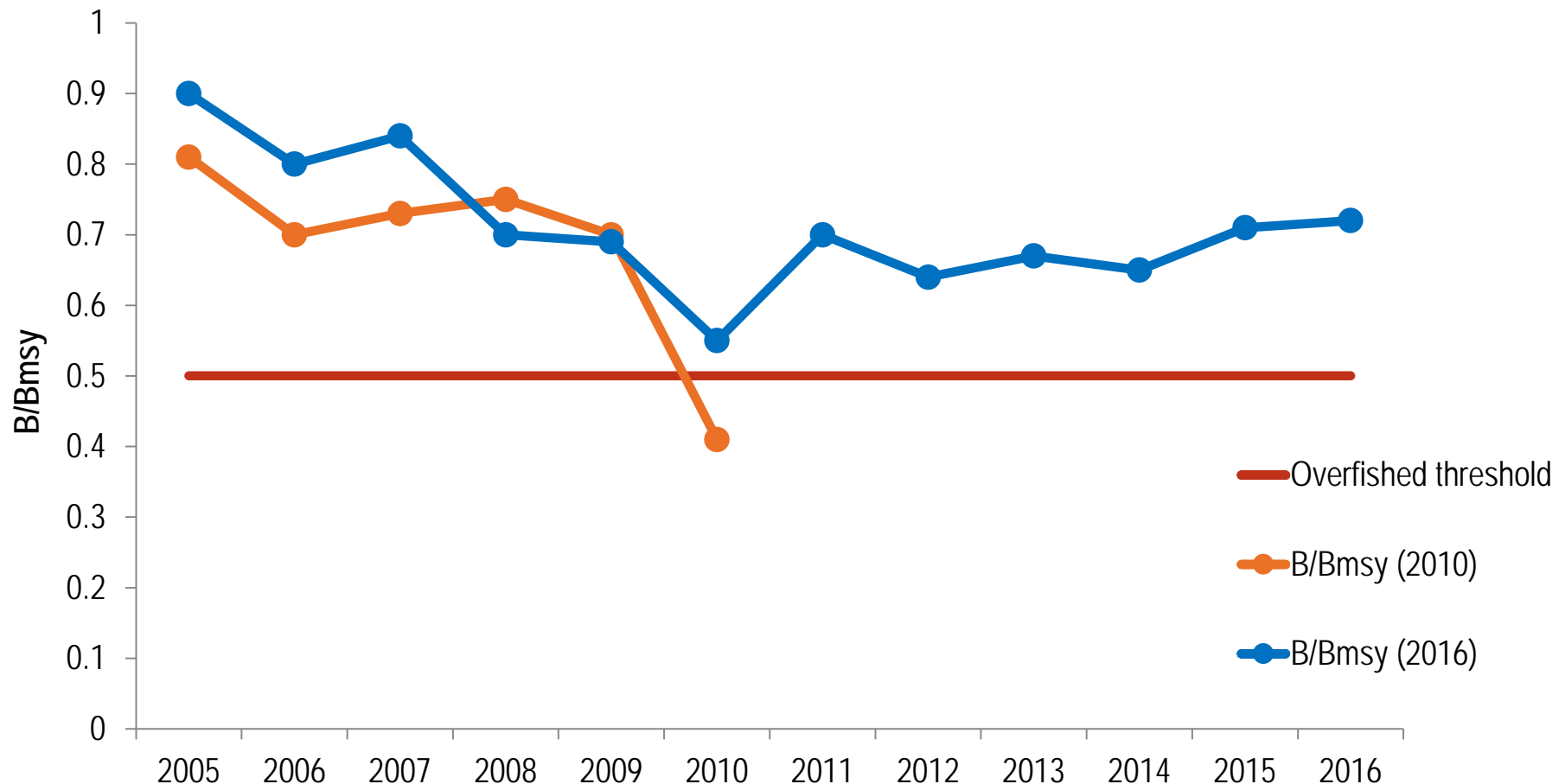
1. Increasing stability to fisheries
2. Increasing flexibility in rebuilding plans
3. Determining adequate progress in rebuilding
4. Determining which stocks require federal management
5. Clarifying OY & advancing EBFM

Increasing flexibility in rebuilding plans



Increasing flexibility in rebuilding plans

Discontinuing rebuilding plans



Features of NS1 Final Rule

1. Increasing stability to fisheries
2. Increasing flexibility in rebuilding plans
3. Determining adequate progress in rebuilding
4. Determining which stocks require federal management
5. Clarifying OY & advancing ecosystem-based fisheries management (EBFM)

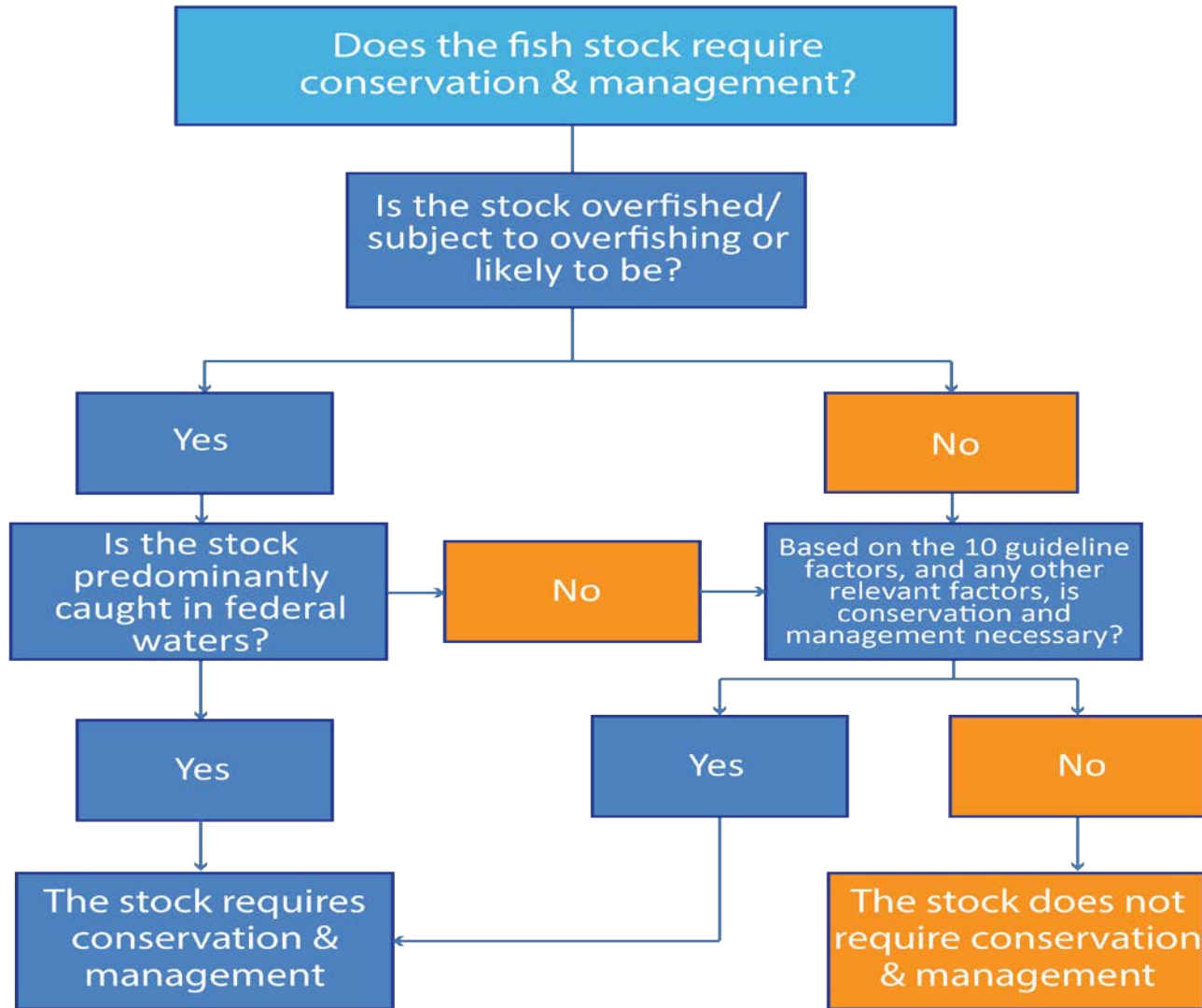
Determining adequate progress in rebuilding

Adequate progress is not being made if:

1. $F > F_{\text{rebuild}}$ or associated ACL, and AMs are not effective, or
2. New/unexpected information significantly changes rebuilding expectations



Determining which stocks require federal management



Features of NS1 Final Rule

1. Increasing stability to fisheries
2. Increasing flexibility in rebuilding plans
3. Determining adequate progress in rebuilding
4. Determining which stocks require federal management
5. Clarifying OY & advancing EBFM

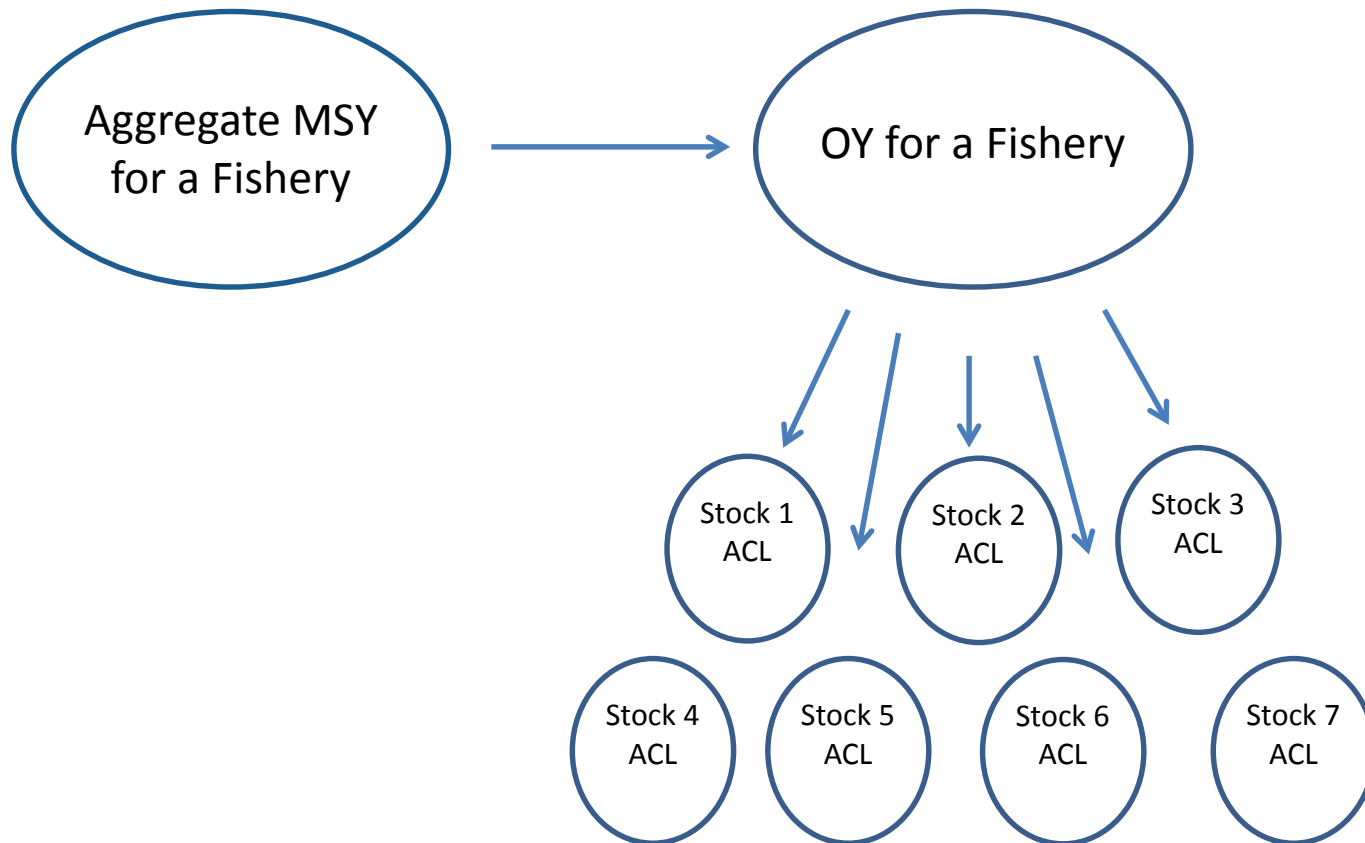
Clarifying OY

- Relationship between OY and ACL
- Qualitative analyses of economic, ecological, and social factors are permissible



Advancing EBFM

Example: Aggregate MSY



The updated NS1 Guidelines:

- Provide **tools** to increase stability and flexibility within fisheries management
- Do not establish any new requirements to revise management plans



Questions?