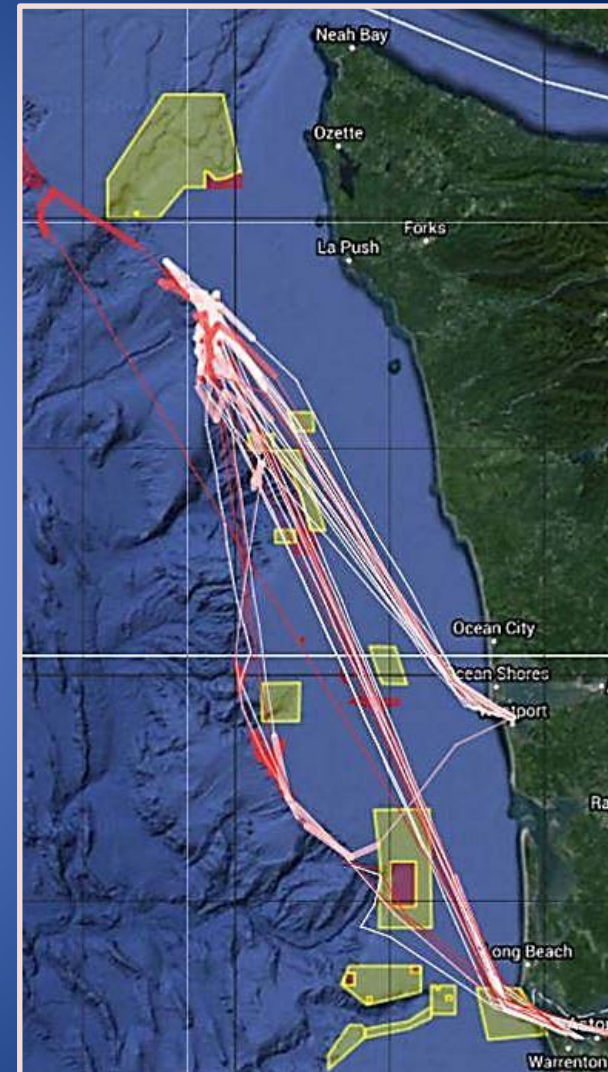
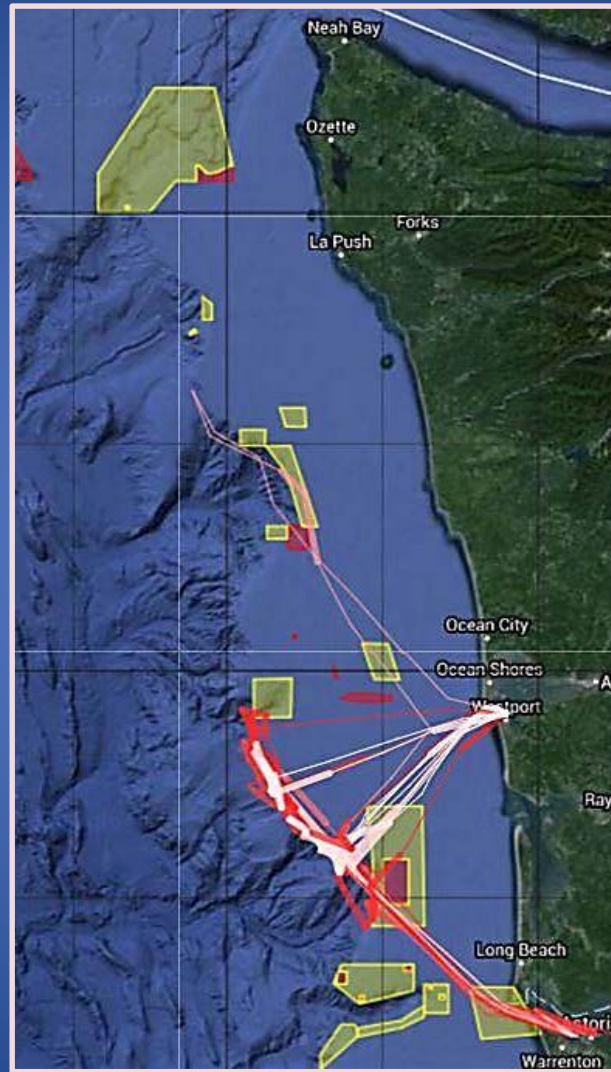
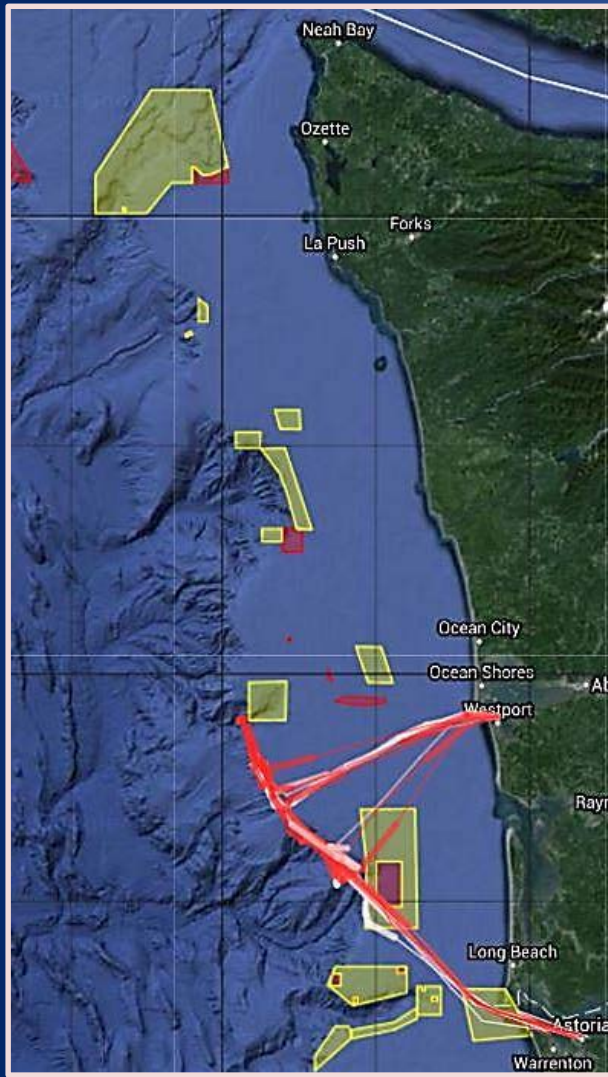


# Different Pro-rata “Base Rates” for Two Whiting Coops

Annual Base Rates 2016	POP	DKB	Canary	Widow
Mothership Coop	0.10	0.09	0.08	1.66
Shorebased Coop	0.17	0.25	0.09	3.52
WMC Base Rates as % of SWC Base Rates	59%	36%	89%	47%

More restrictive POP & DKB Base Rates and the inability to access additional quota in the IFQ market constrains the fishing strategy of Catcher Vessels in the MS sector

# Two Shorebased Whiting Boats - YTD

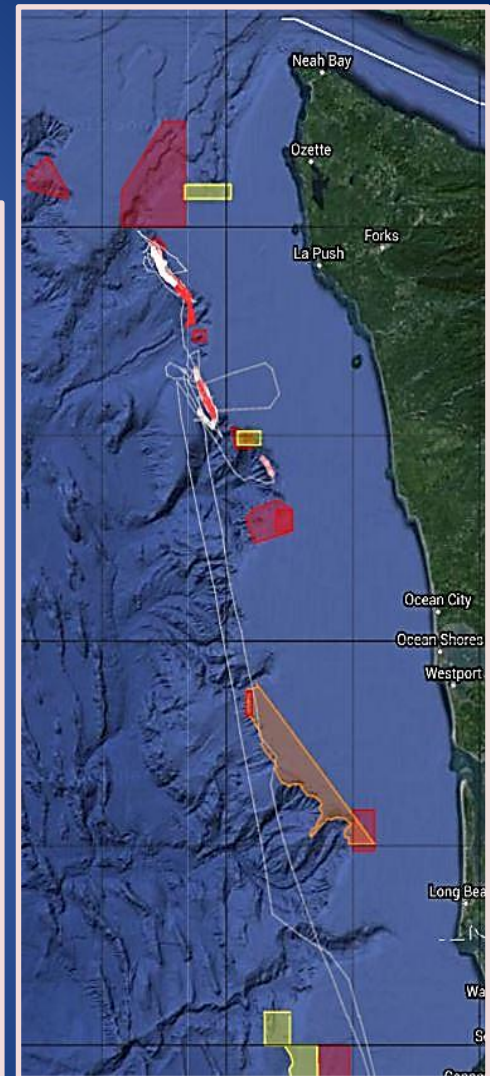
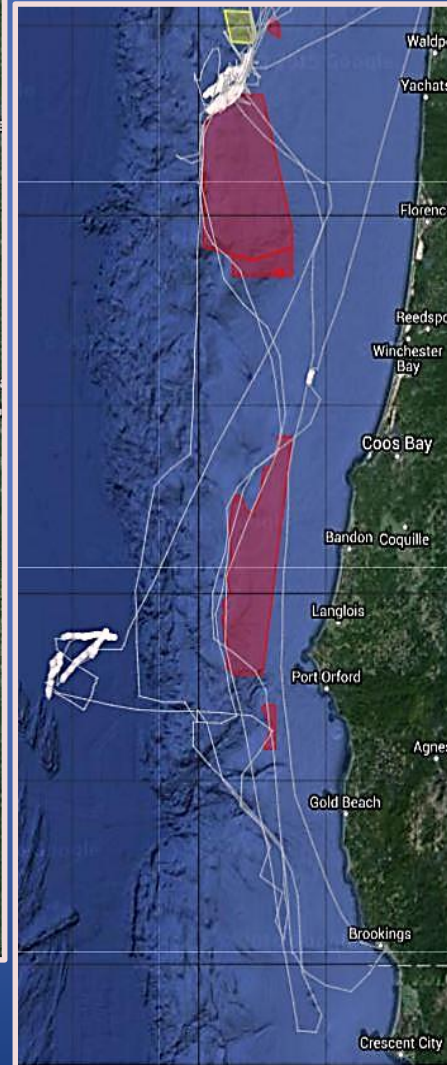
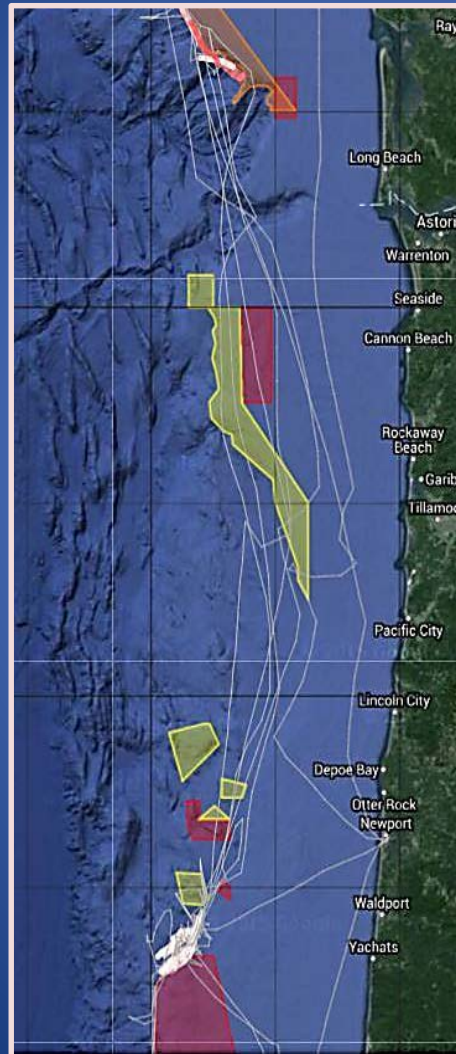
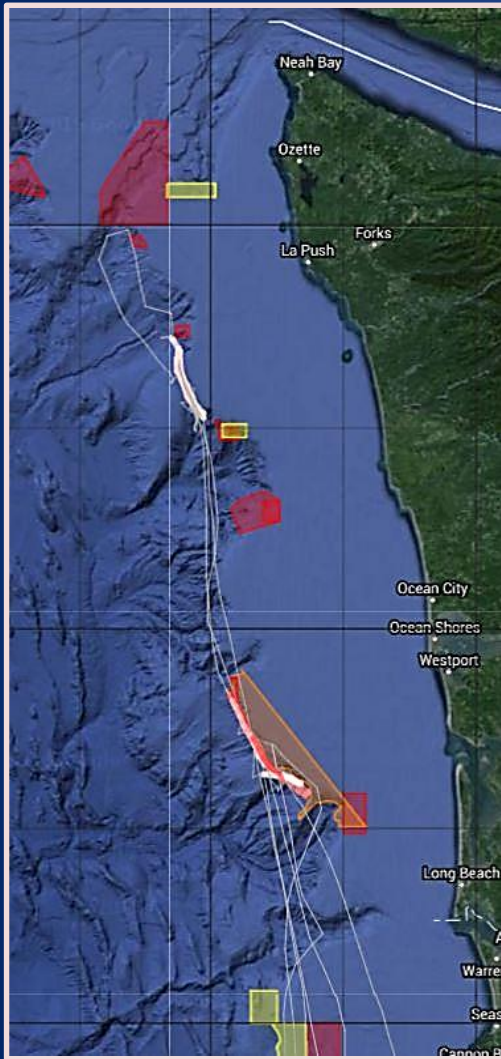


Higher POP "Base Rates" have allowed Shorebased Catcher Vessels to remain off WA since the opening of the fishery



# Two Mothership Whiting Boats – YTD

Have been moving from WA to OR...  
from OR to CA ...and back to WA





# Between a Rockfish and a Hard Place...

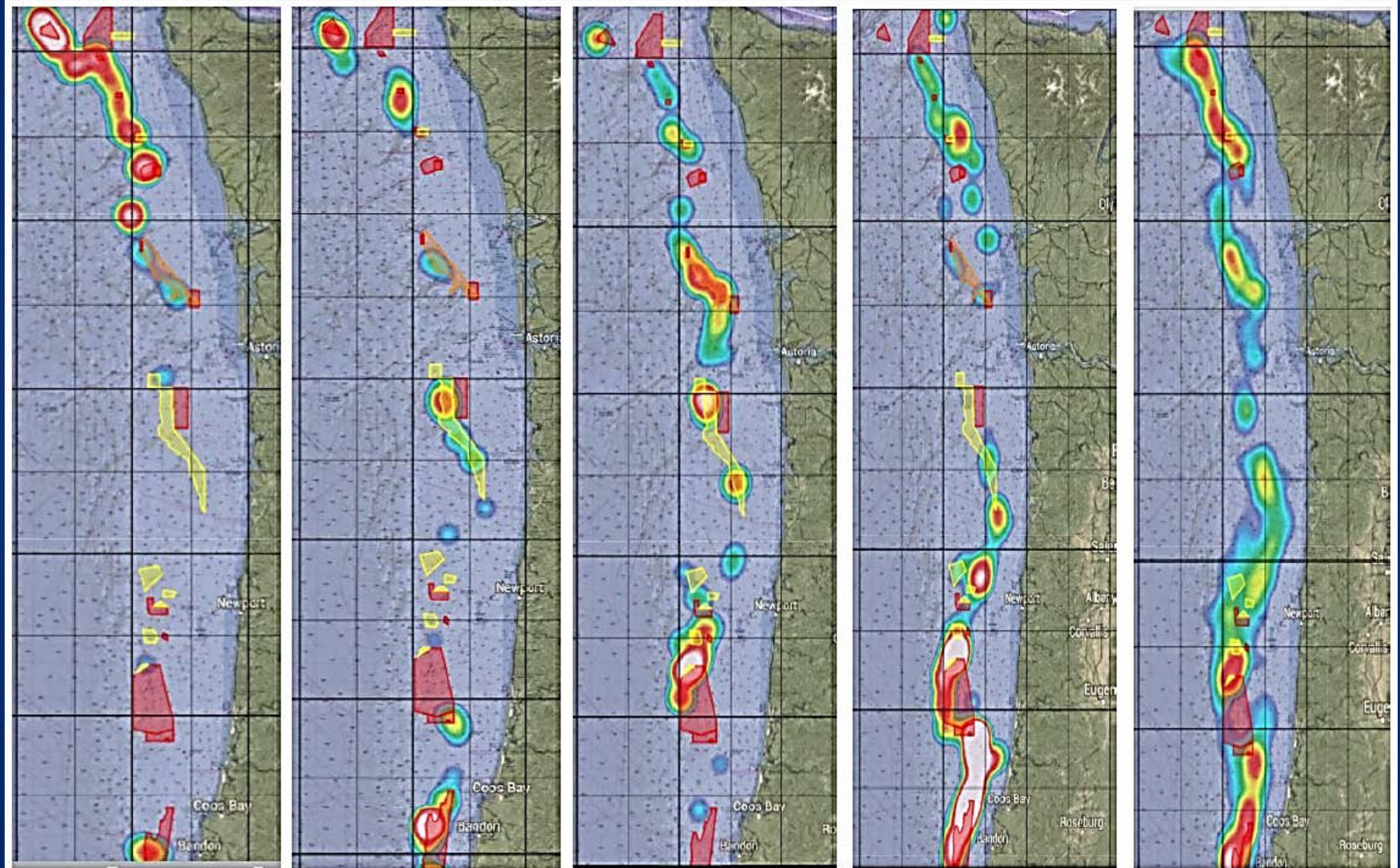
POP

DKB

Widow

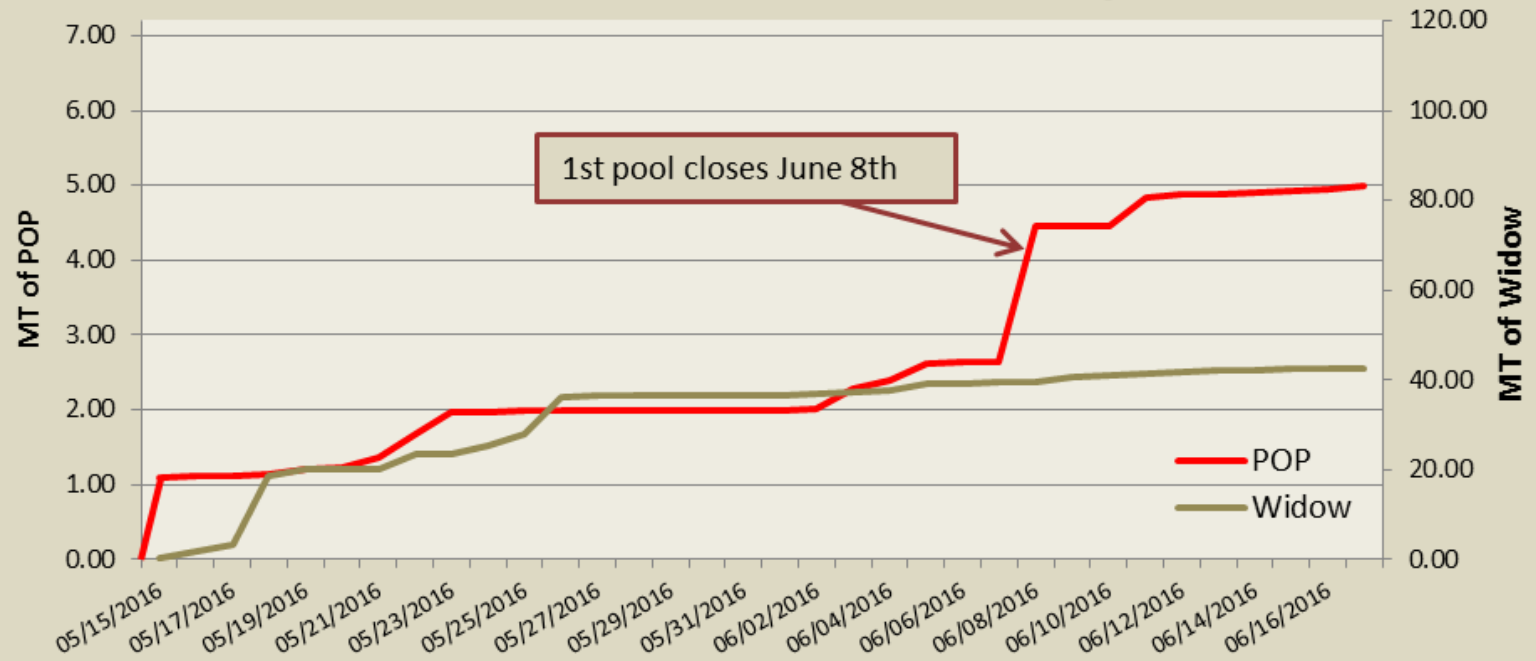
Chinook

Whiting

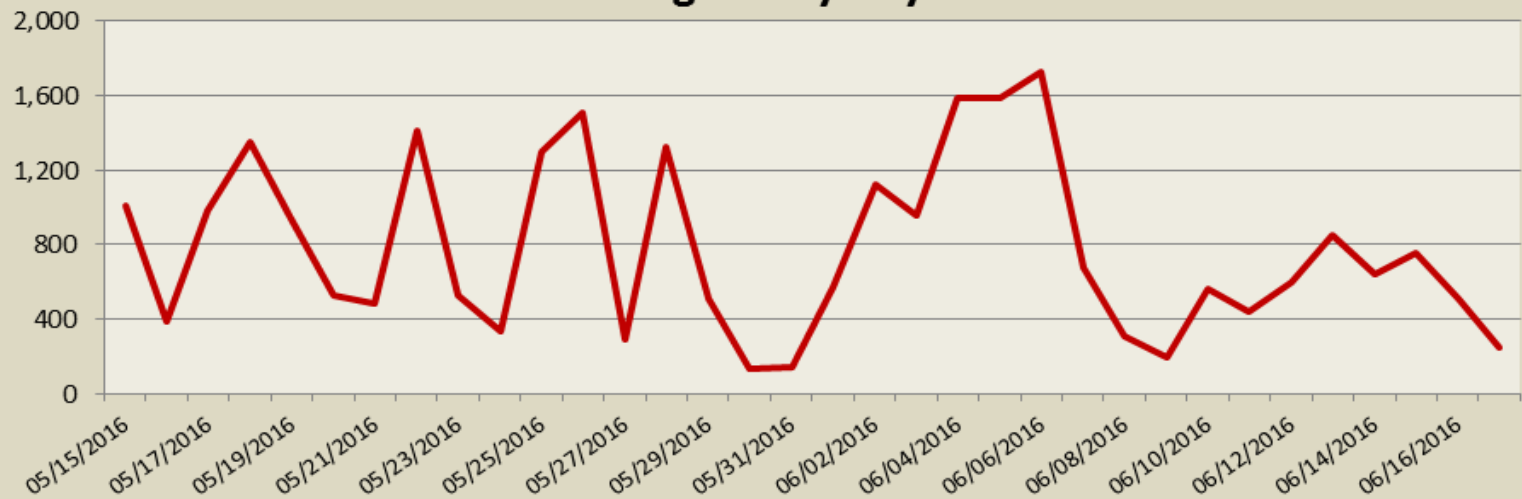


## Avoiding One Species at the Cost of Another

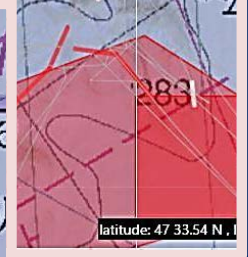
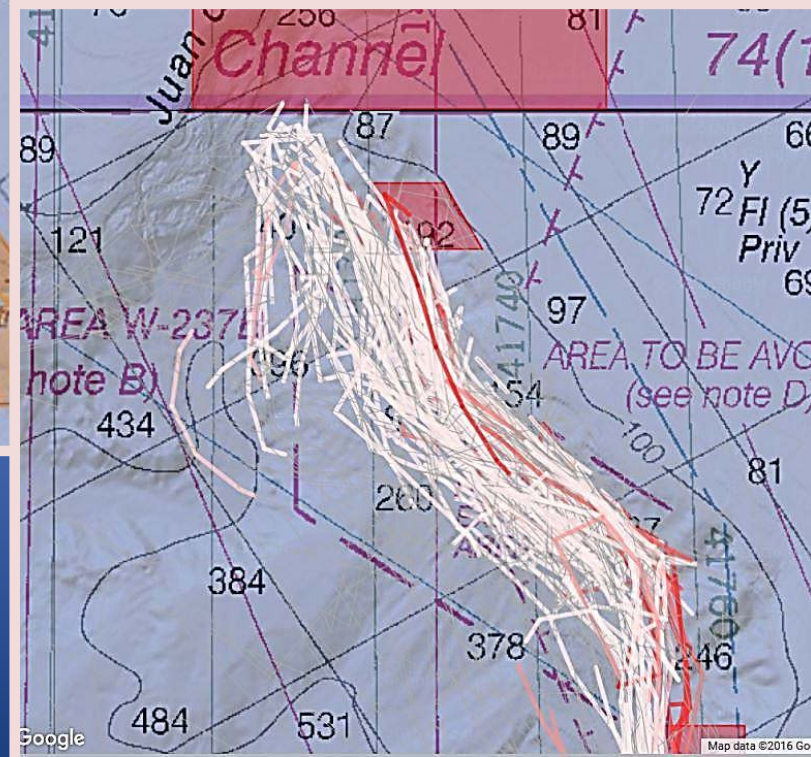
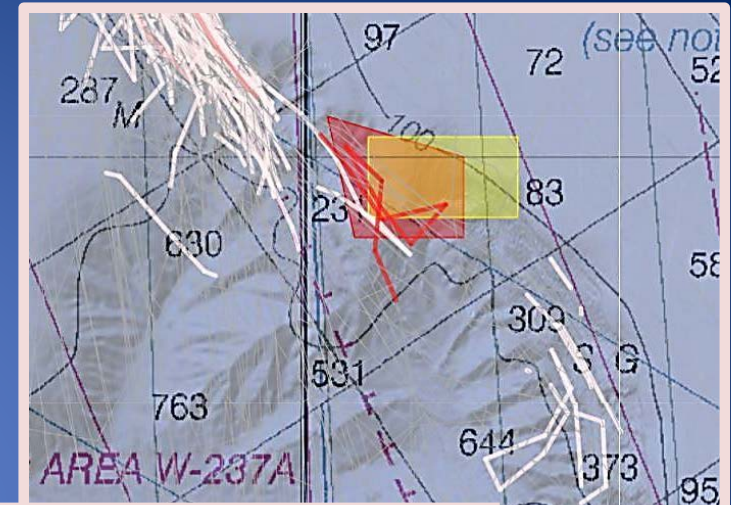
## Cummulative MT of POP & Widow Bycatch



## Whiting MT by Day

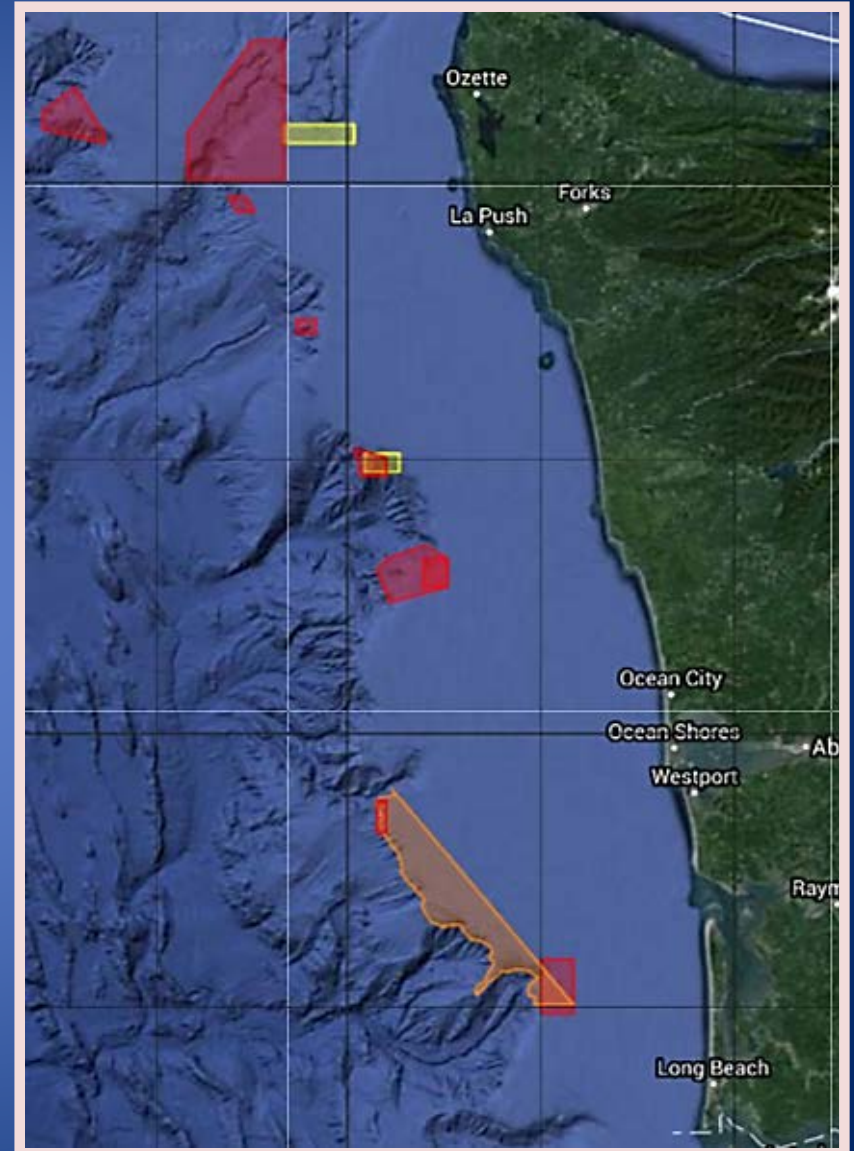
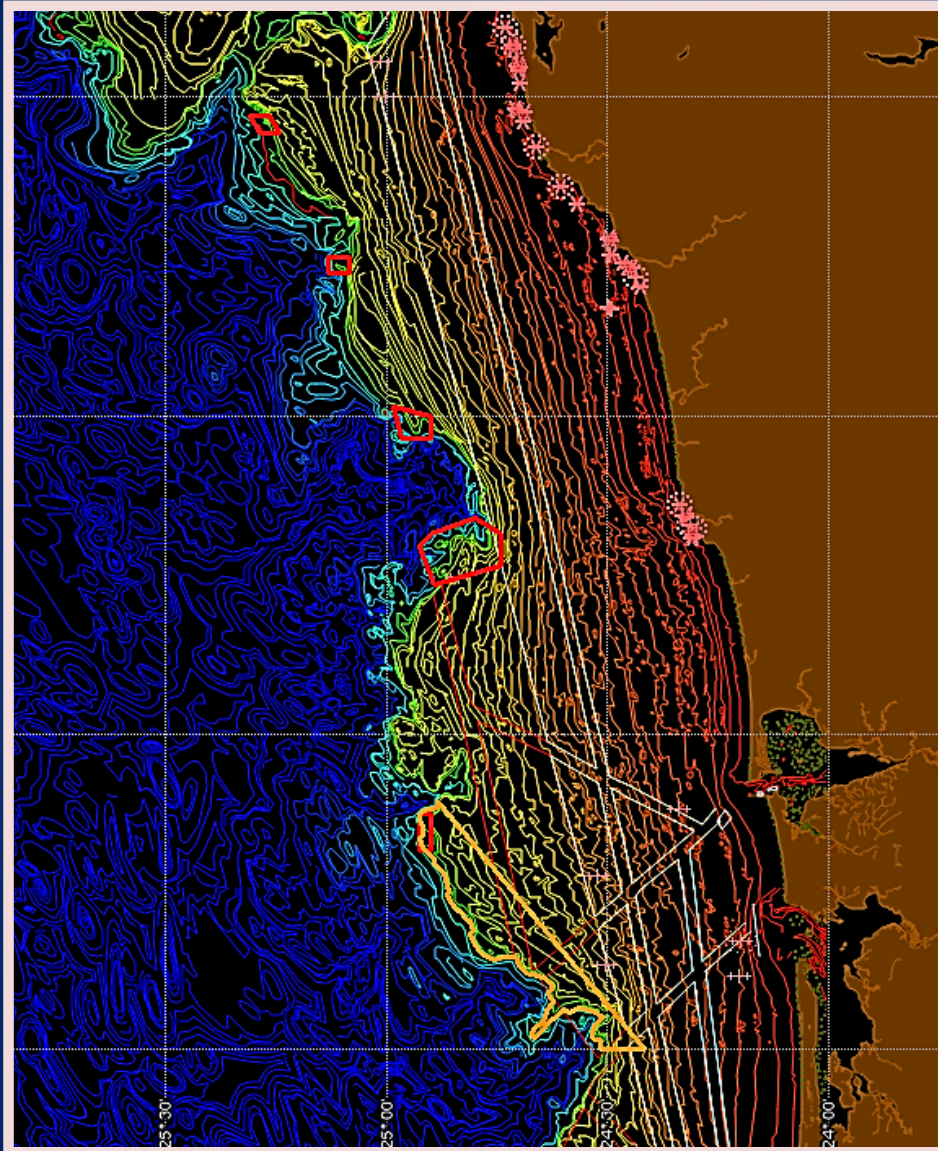






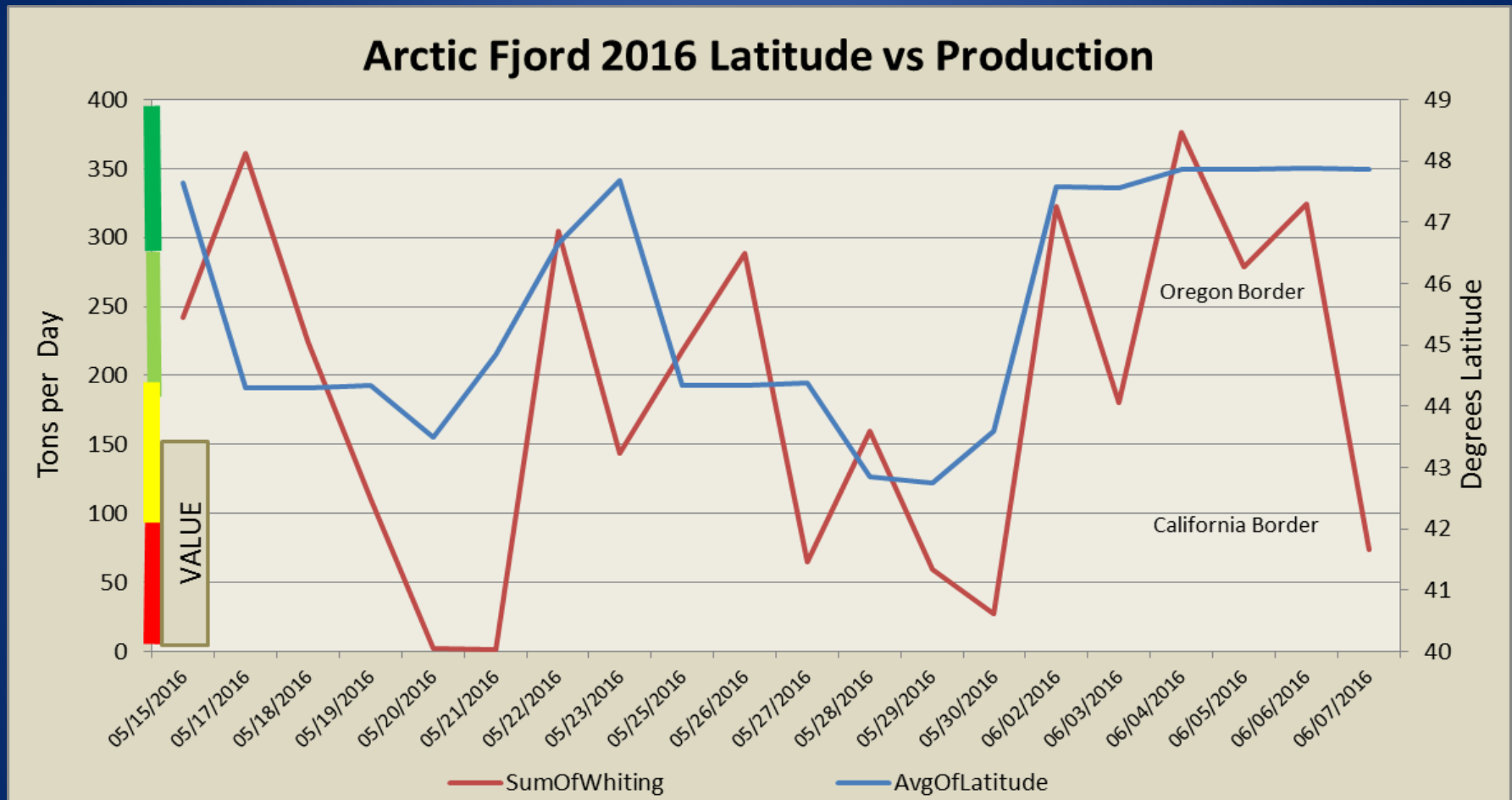


# Six New WMC Closure Areas off WA in 2016



The WMC has done everything it can with the limited POP & DKB available

# Costs of Relocating to Avoid Bycatch



- Cost of Travel – Time – Fuel
- Lost Daily Production in Absolute Tonnage
- Lower Recovery per Ton Means Lower Value per Ton



# IFQ Sector Use of Pacific Ocean Perch QS by Year

POP	2011	2012	2013	2014	2015	Average
IFQ Sector Quota LBS	263,148	287,161	260,719	268,621	285,059	272,942
Harvested	101,433	118,146	108,062	89,311	175,133	118,417
Quota LBS Remaining	161,715	169,015	152,657	179,310	109,926	154,525
Unharvested %	61.5%	58.9%	58.6%	66.8%	38.6%	<u>56.6%</u>