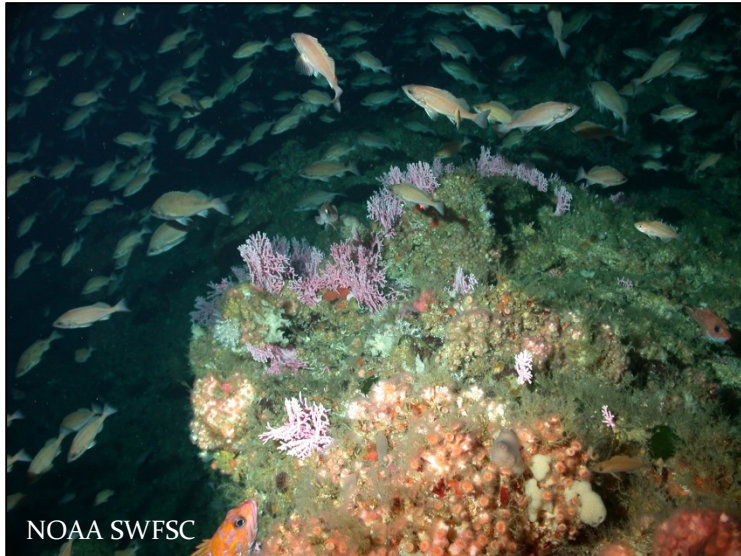


Essential Fish Habitat Proposal Overview & Update



Report to the
Pacific Fishery Management Council

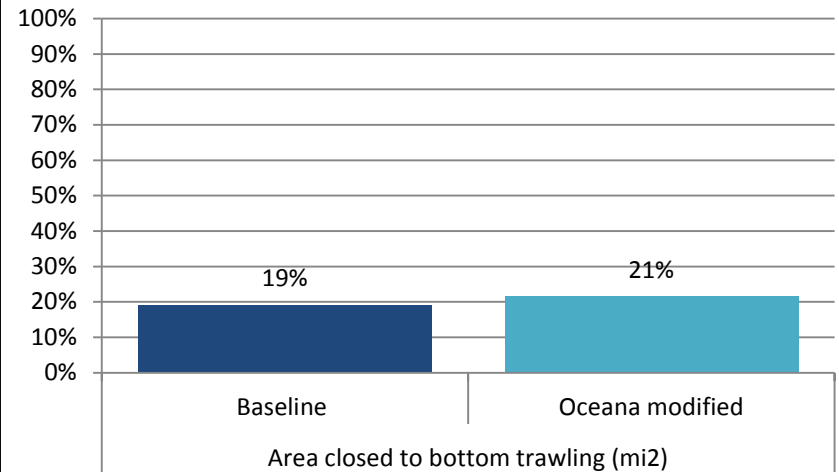
Ben Enticknap and Erin Kincaid
June 23, 2016

Proposal Summary

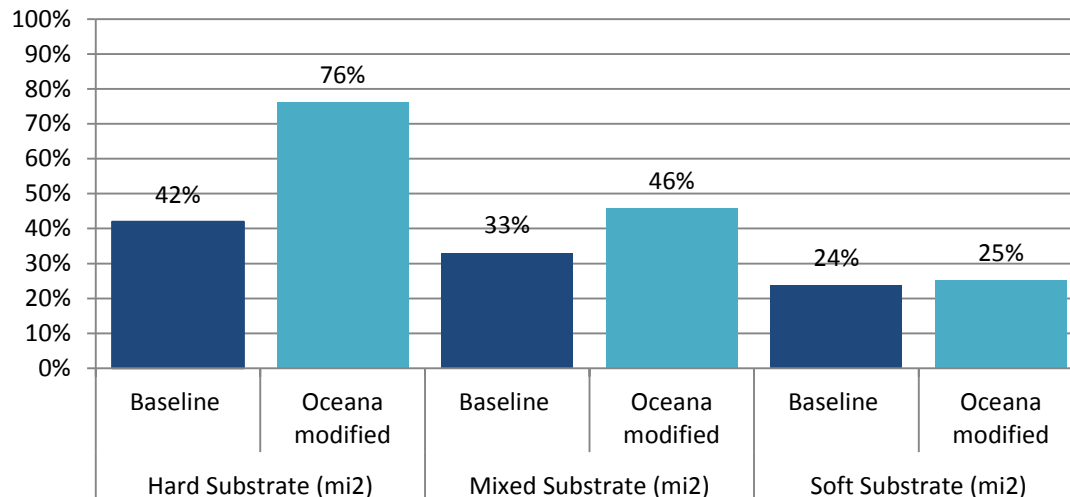
- 61 new EFH Conservation Areas/ modifications (excluding changes inside U&As)
- 7 partial re-openings of existing EFH Conservation Areas
- Net change in area closed to bottom trawling shoreward of the 700 fathom footprint closure, with RCA removal S. of Pt. Chehalis: + 12,760 mi²
- Deep-water Habitat Conservation Area: + 123,222 mi²
- Net increase in fishing opportunity: restore 1.6% of previous coastwide trawl effort with RCA removal S. of Pt. Chehalis, WA (11.7% of the effort that was previously displaced)

Biogeographic Regions & Analysis

Northern Biogeographic Region Shelf and Upper Slope



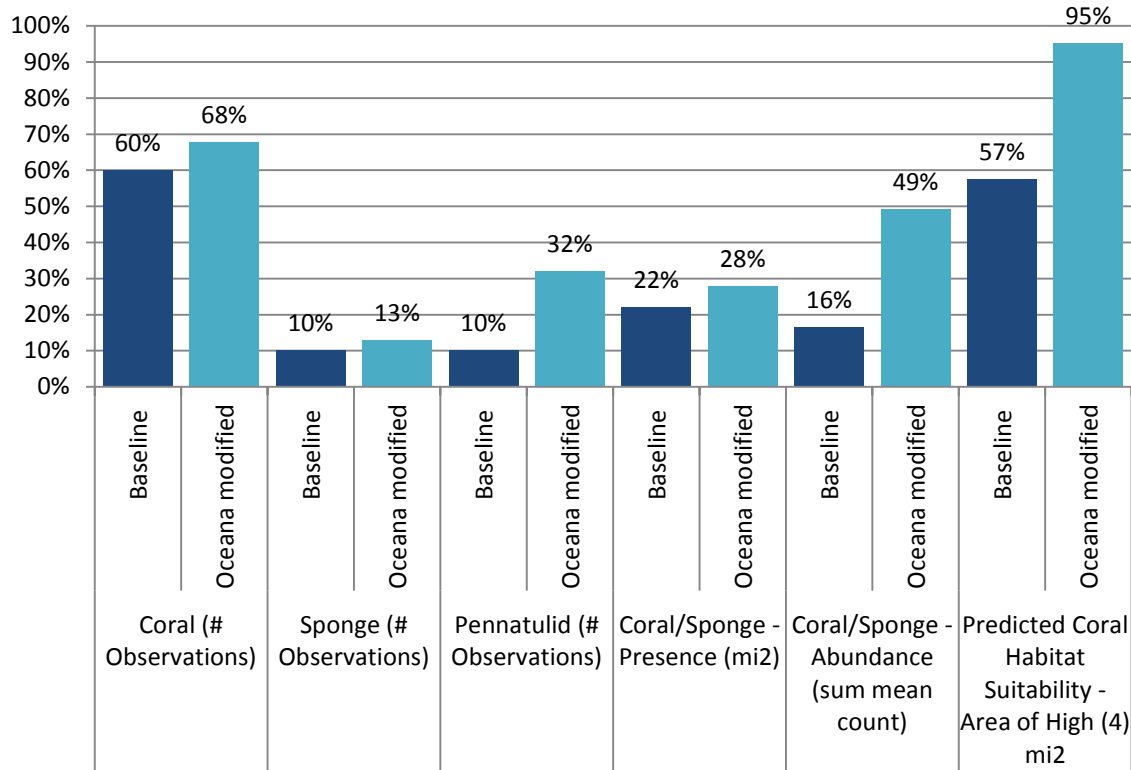
Northern Biogeographic Region Shelf and Upper Slope



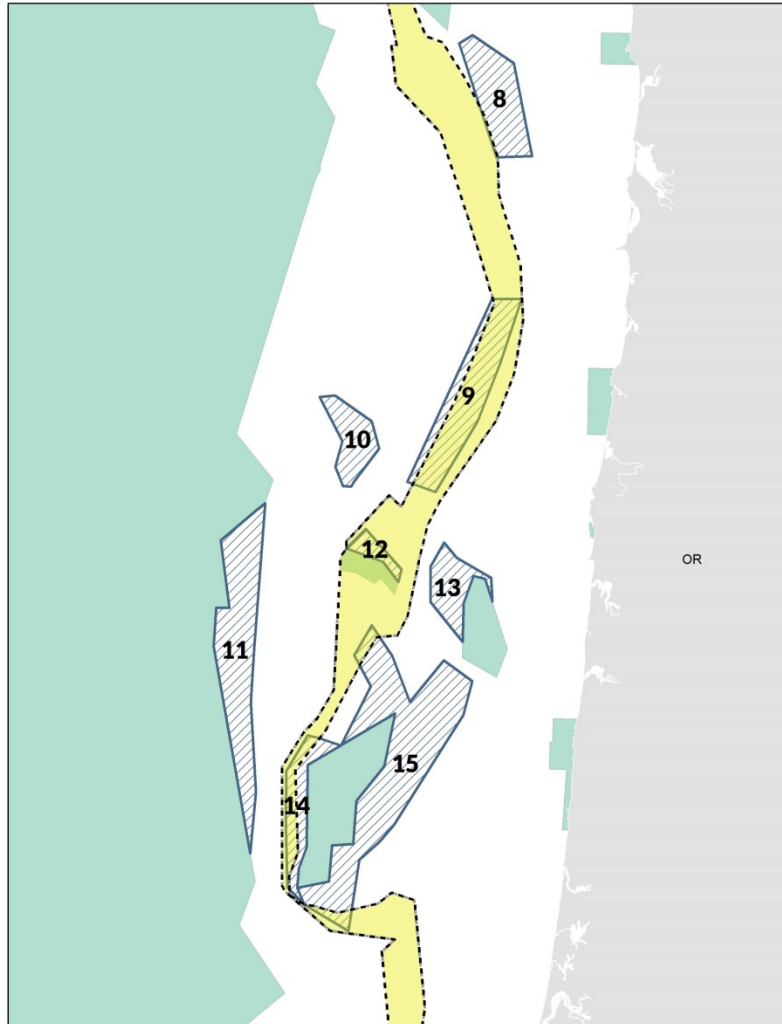
Baseline = EFHCAs + trawl RCA + state waters closed to bottom trawling.

Oceana modified = Baseline \pm Oceana proposed EFHCA changes - RCA S. of Pt. Chehalis, WA

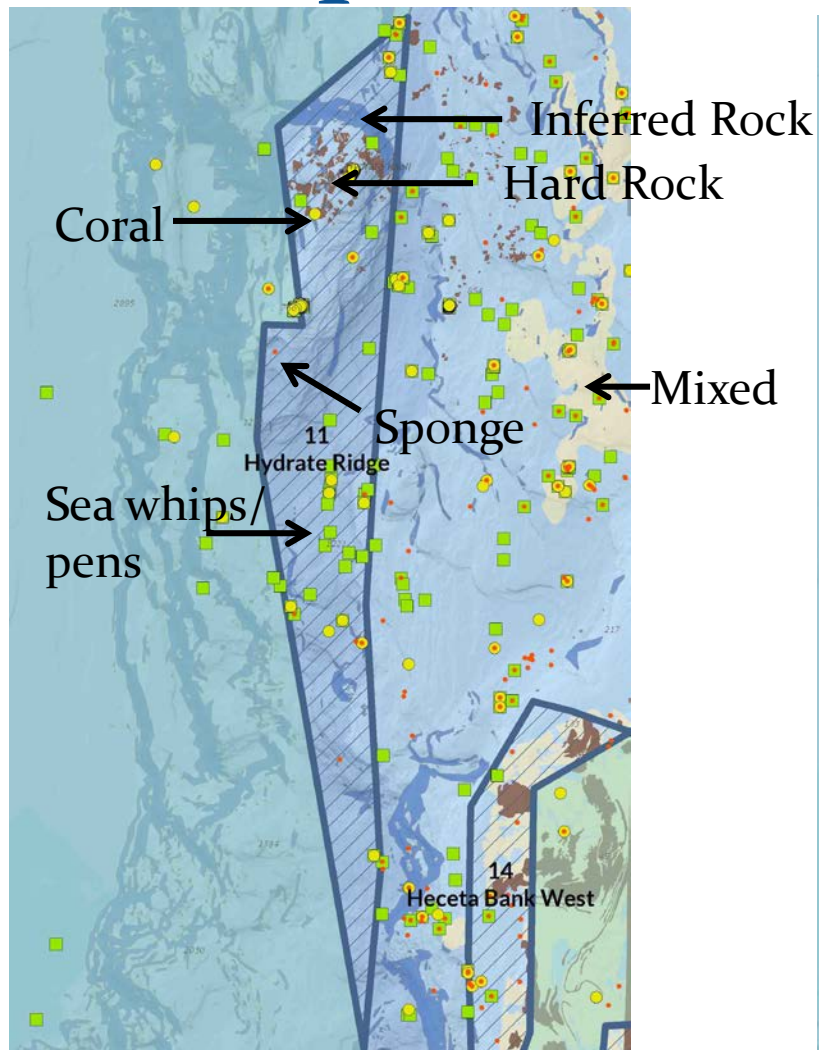
Northern Biogeographic Region Shelf and Upper Slope Biogenic Habitat



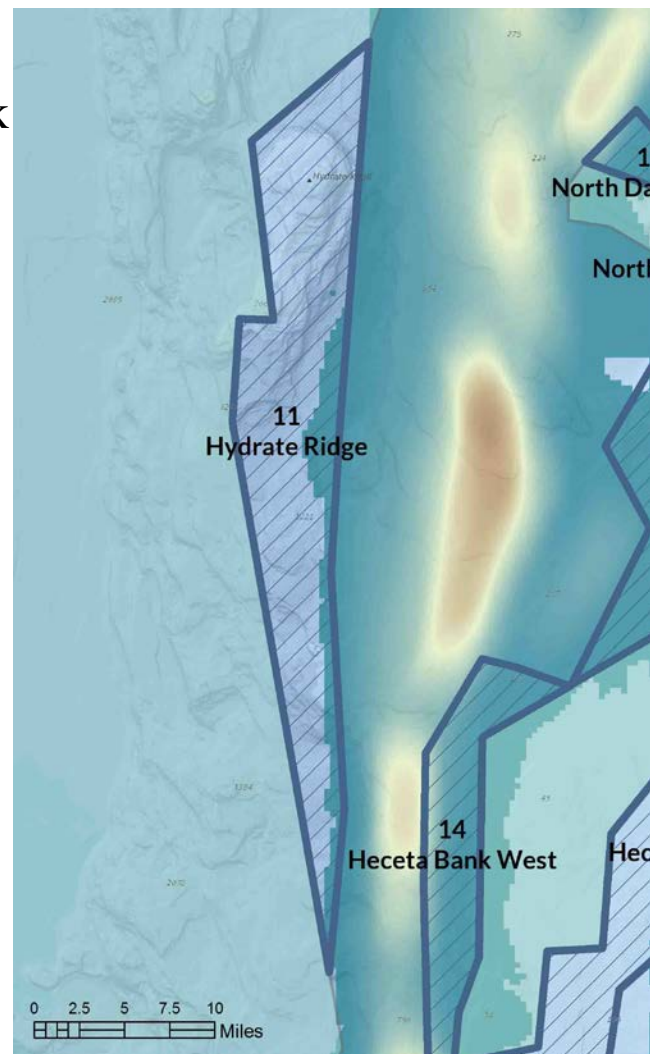
Overview Maps



Site Maps

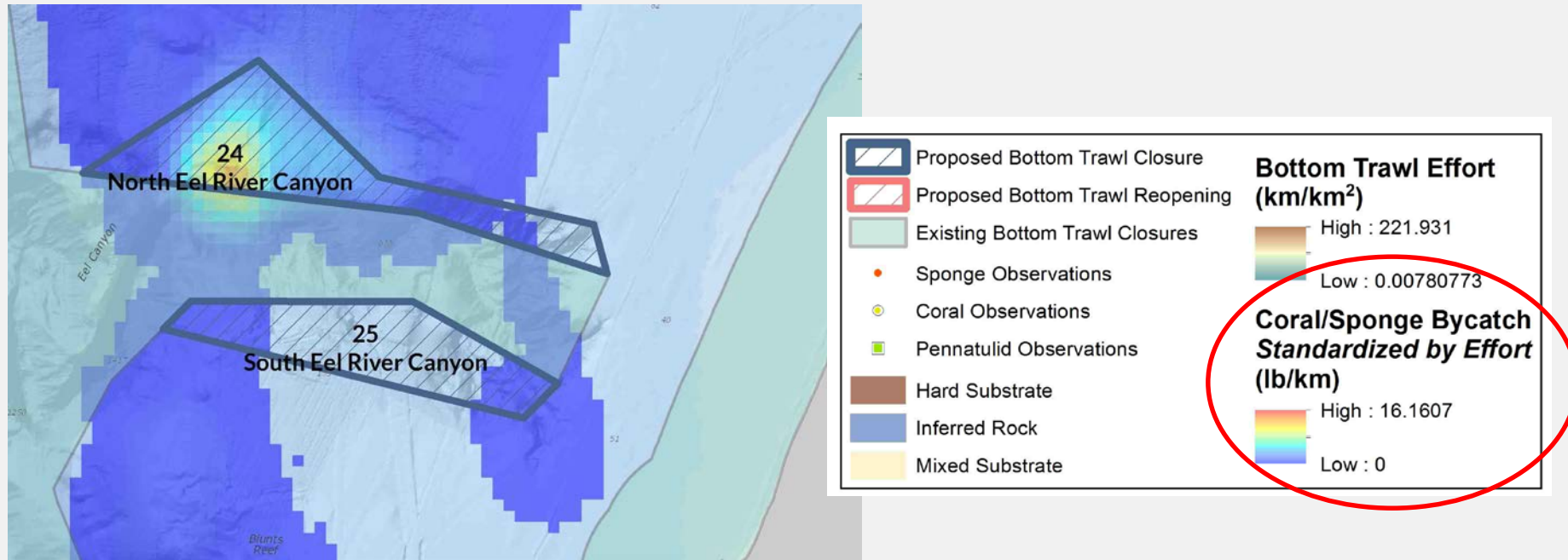


Priority Habitats



Bottom Trawl Effort

Site Maps

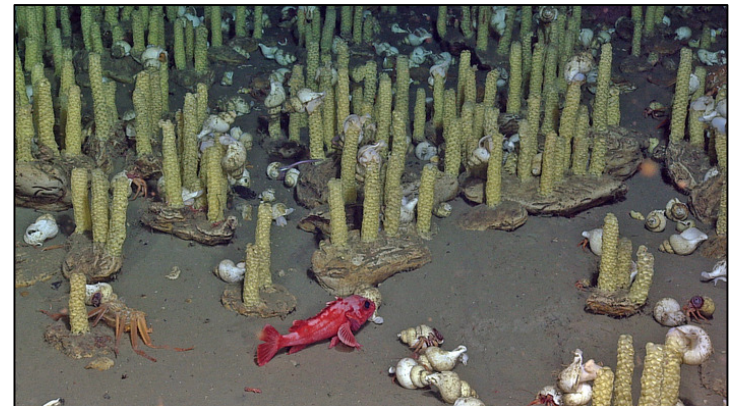


Coral and Sponge Bycatch Hotspots

*As recommended in the NOAA Deep Sea Coral Research and Technology
Program 2014 Report to Congress*

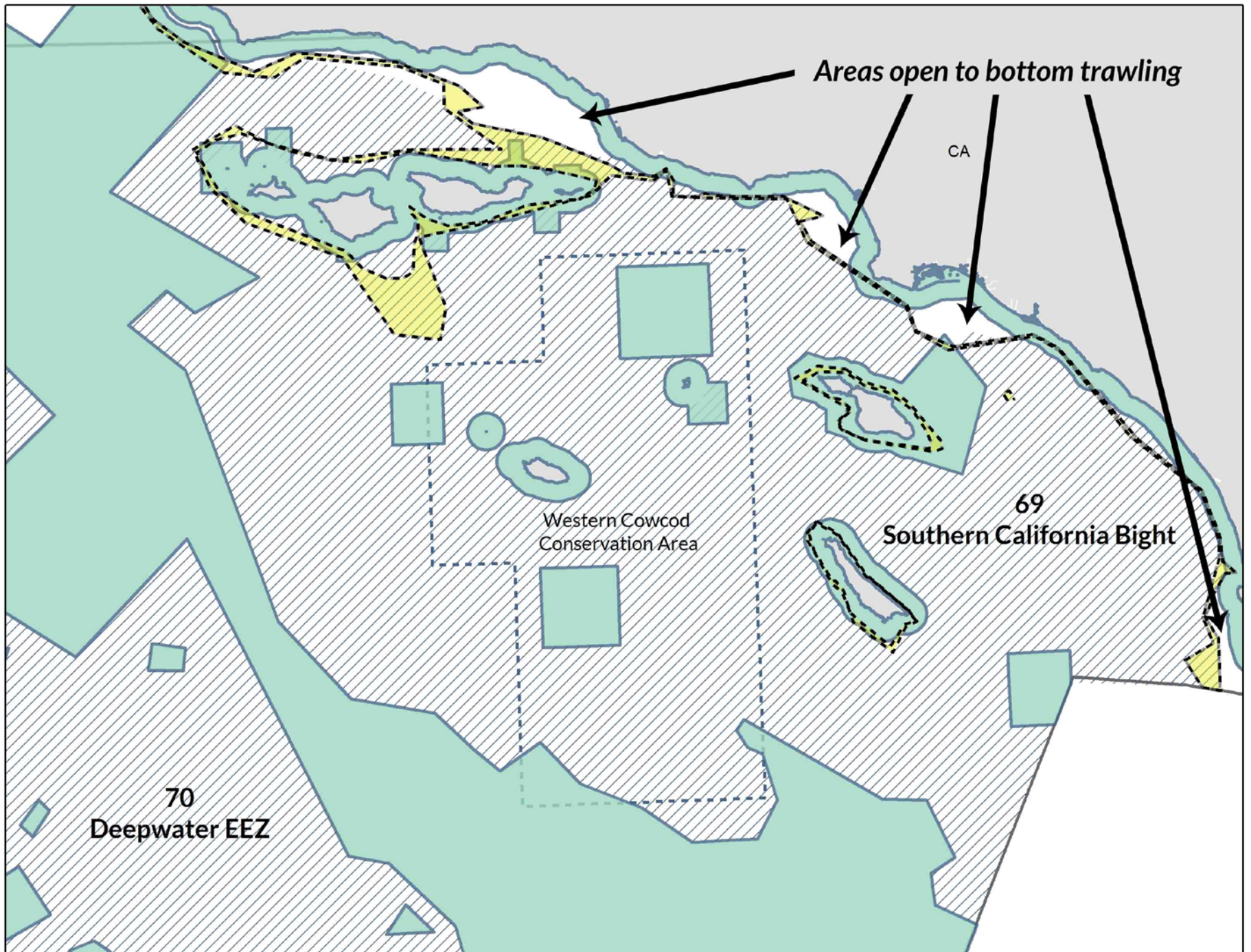
Methane Seeps

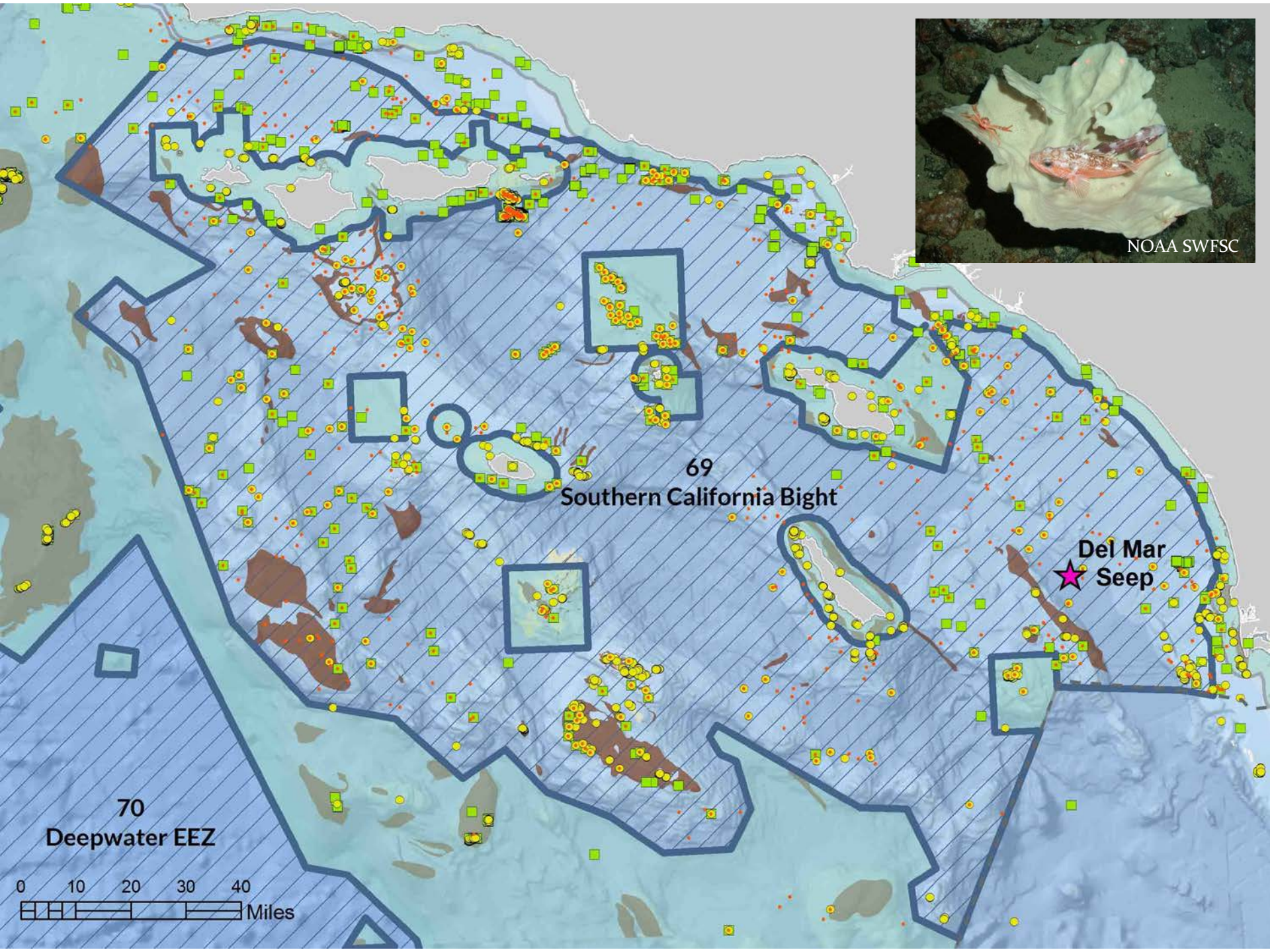
- Areas where methane and hydrogen sulfide gas leak through the Earth's crust.
- Associated with managed fish species and priority habitats: hard substrates, habitat forming invertebrates.



Hydrate Ridge hosts abundant soft corals and is a rich habitat for fish, squat lobsters, clams and crabs

www.interactiveoceans.washington.edu





Digital Tour

www.oceana.org/PacificSeafloorTour



Healthy Habitat, Healthy Oceans

A deep-water sea star (*Rathbunaster californicus*) and unknown octopus. Cochrane Bank. Credit: NOAA Gulf of the Farallones National Marine Sanctuary.



A black coral, also known as Christmas tree coral (*Antipathes dendrochristos*), with a rosy rockfish (*Sebastes rosenblatti*). Observed on Cochrane Bank, at a depth of 312 feet, on a cruise to the Gulf of the Farallones Sanctuary in 2012. This coral is 7 feet across and estimated to be at least 100 years old. Credit: Gulf of the Farallones National Marine Sanctuary.

Farallon Escarpment

This important area - roughly 170 square miles in size and situated off the coast of San Francisco - would expand upon existing nearby bottom trawl protections. The seafloor here slopes off steeply in some areas which creates the perfect place for upwelling of cold, nutrient rich waters that support:

