

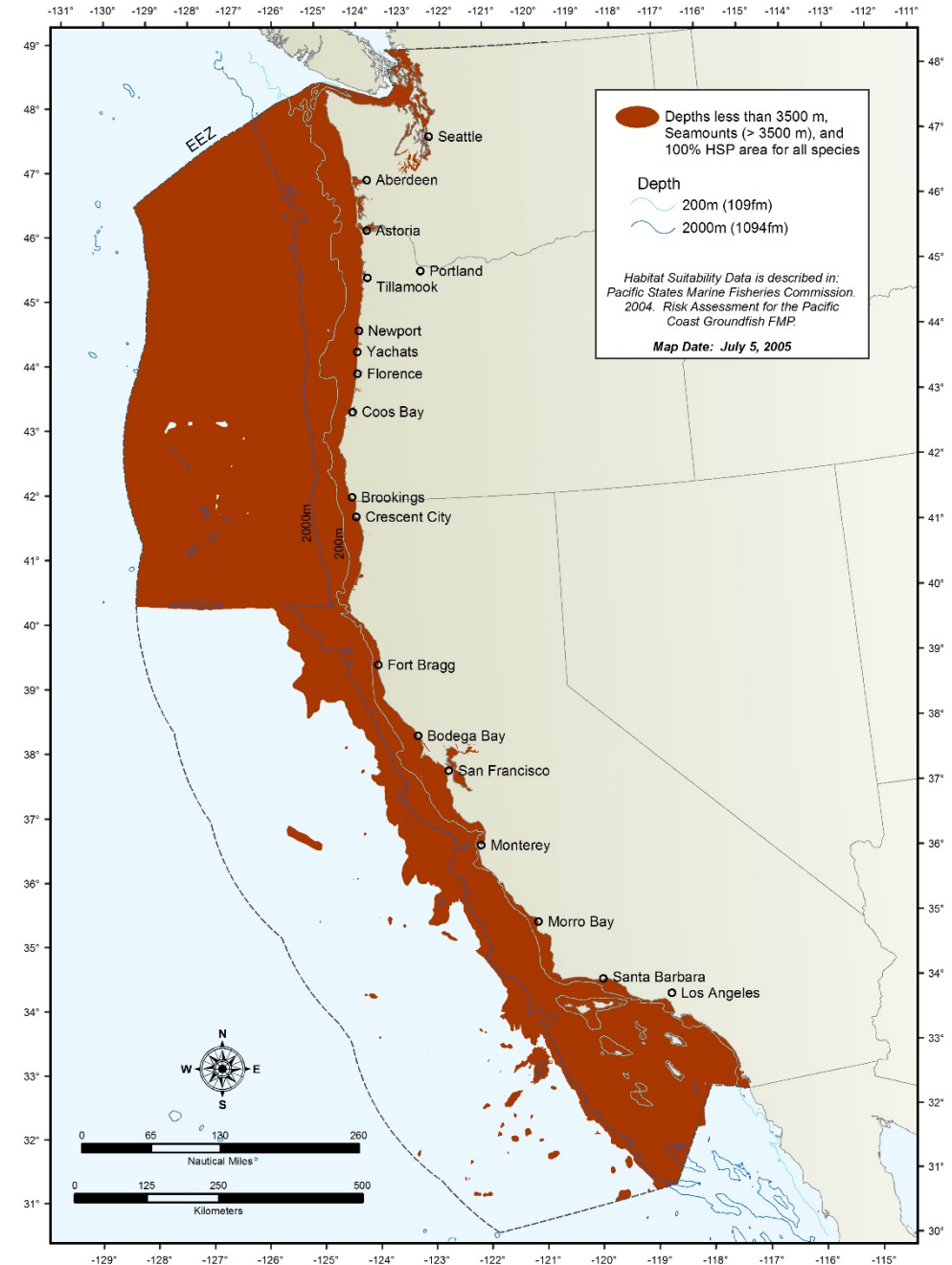
Pacific Coast Groundfish:

Consideration of Modifying Essential Fish Habitat and Rockfish Conservation Areas

- Background
- Purpose and Need
- Alternatives
- Council Task and Guidance

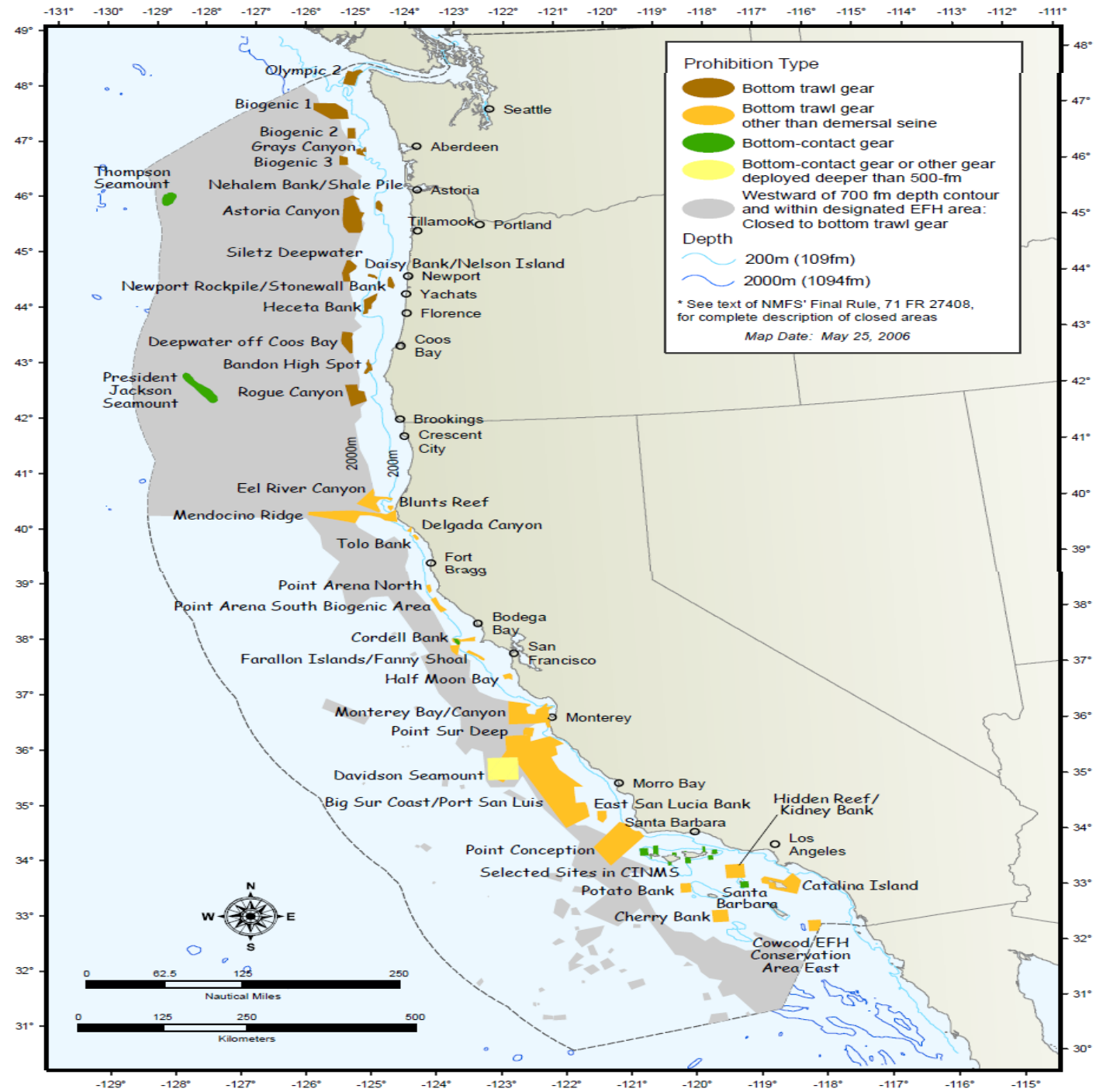
Current EFH

- Depths $\leq 3,500$ m (1,914 fathoms), to MHHW or the upriver extent of saltwater intrusion...
- Seamounts in depths greater than 3,500m as mapped in the EFH assessment Geographic Information System.
- *Areas designated as habitat areas of particular concern (HAPCs) not already identified by the above criteria.*



EFH Closed Areas

- Areas closed to protect rocky reef
- Areas closed to protect biogenic habitat
- Other areas closed for conservation



Scope of Action (April 2015)

- **EFH Conservation Areas, with the exception of:**
 - Creation of marine reserves for the drift gillnet fishery in the Greenpeace proposal;
 - Further changes to “no bottom contact EFH conservation areas”; and
 - Application of EFH conservation areas to midwater trawl fisheries.
- **Trawl RCA adjustments**
- **Cumulative impacts analysis**
- **Update Appendices B, C, and D**
- **Update Research and information needs and move to appendix**
- **Update Review and Revise process and put in COP**
- **MSA 303(b) discretionary authorities to protect benthic habitat in waters deeper than 3500 m and deep-sea corals.**

Additional Council Direction

- Keep a placeholder for the collaborative proposal Alternative (April 2015)
- Any EFH changes affecting Tribal U & As would be subject to Government-to-Government consultation (June 2015)

Purpose and Need

P1: Minimize the adverse effects of fishing on EFH to the extent practicable.

N1: Consider new information on seafloor habitats, fishing effort, and deep-sea corals.

P2: Protect benthic habitats, including deep-sea corals, from the adverse effects of fishing.

N2: Consider discretionary MSA authorities under Section 303(b).

P3: Evaluate and revise the RCA closures to minimize bycatch of a particular species or species group, primarily those that are overfished.

N3: Consider the RCAs in light of the 2011 implementation of the IFQ Program.

P4: Revise the groundfish EFH research and information needs.

N4: Revise the research and information needs, based on new information on seafloor habitats, fishing effort, and deep-sea corals.

Purpose and Need (continued)

P5: Develop a more detailed description of the EFH review/revision process.

N5: Provide for a more efficient process for reviewing and revising groundfish EFH.

P6: Revise FMP Appendix C, Part 2: Fishing effects on EFH.

N6: Consider new information on the adverse effects of the fishing on EFH.

P7: Revise Appendix B to the Groundfish FMP: Essential Fish Habitat.

N7: Consider new information on EFH components, including major prey species.

P8: Revise Appendix D to the Groundfish FMP: Non-fishing effects on EFH.

N8: Consider new information on non-fishing activities and conservation measures.

Collaborative Proposal

- Industry & NGO stakeholders
- See H.8.b Public Comment 1 and Supplemental Public Comment 3

Public Proposals

- Submitted 2013
- [ftp://ftp.pcouncil.org/pub/EFH Proposals 2013](ftp://ftp.pcouncil.org/pub/EFH_Proposals_2013)
 - Oceana/NRDC/OC*
 - Marine Conservation Institute
 - Greenpeace*
 - Fishermen's Marketing Association
 - Gulf of the Farallones NMS
 - Monterey Bay NMS
- A few minor changes
 - *Council scope of action; April 2015
 - Oceana/NRDC/OC minor modifications

Alternatives

- Alternatives are described independently (i.e., not integrated)
 - After selection of a PPAs (April 2016), the preferred alternatives will be analyzed, in advance of FPAs (September 2016)
- Different regulatory pathways may be used as appropriate
 - E.g., Plan amendment, Appendices, etc.

Alternative	Least Protective ----- Action Alternatives ----- Most Protective					
1. EFHCAs (benthic habitat protection)	1a. No Action	1b. Eliminate some or all of the existing 34 bottom trawl EFHCAs	1c. Reduce existing EFHCAs spatial extent, to more closely align with priority benthic habitats	1d. Adopt a combination of EFHCA changes with no net change in spatial extent	1e. Expand existing EFHCAs to encompass adjacent priority habitat	1f. Expand existing EFHCAs to encompass adjacent priority habitat & add new EFHCAs
2. Public Proposals	2a. No Action	2b. Adopt EFHCAs proposed for reopening	2c. Adopt none of the public proposals for new opened areas or for new closed areas		2d. Adopt expansions to existing EFHCAs in the public proposals	2e. Adopt expansions to existing EFHCAs <i>and</i> adopt all EFHCAs in public proposals
3. RCA Habitats	3a. No Action			3b. Add new EFHCAs in trawl RCA, based on habitats likely to be recovered	3c. Add new EFHCAs in trawl RCA, based on presence of priority habitats	3d. Add new EFHCAs in RCA, based on priority habitats <i>and</i> potentially recovered habitats

4. RCA Changes (placeholder – see H.8 Attachment 2 for complete descriptions)	4a. No Action	4f. Remove the trawl RCA	4e. Closures for Overfished Species	4d. Closures for Overfished Species and Selected IFQ Species Managed in Complexes	4c. Closures for Overfished Species, Selected IFQ species Managed in Complexes, and Selected Non-IFQ Species	4b Retain a similar RCA structure; consider pink shrimp trawl areas
5. Revise Appendix B	5a. No Action	5b. Update/revise information in Appendix B of the FMP to reflect new information on Pacific Coast Groundfish life history descriptions, text descriptions of groundfish EFH, and major prey items.				
6. Revise Appendix D	6a. No Action	6b. Add descriptions and conservation measures for new non-fishing activities that may adversely affect EFH.				
7. Information & Research Needs	7a. No Action	7b. Revise Information and Research Needs section of the FMP and move to an appendix.				
8. Review and Revision process	8a. No Action	8b. Update review and revision process and describe elsewhere (e.g., COP).				
9. Revise App. C Part 2	9a. No Action	9b. Revise Fishing gear effects described in Appendix C Part 2.				
10. Clarifications and Corrections	10a. No Action	10b. Provide clarifications and correct minor errors from Amendment 19.				

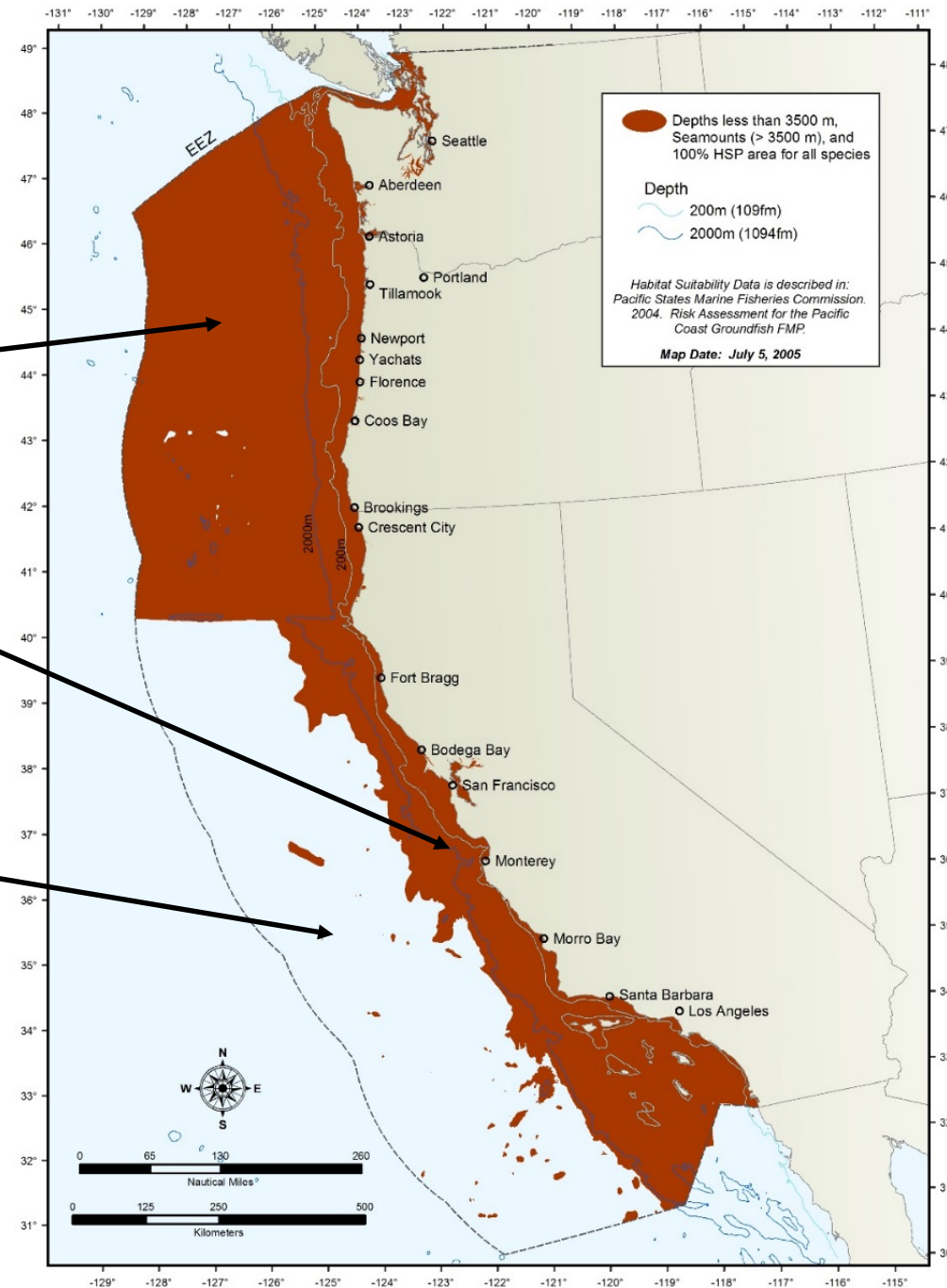
Alternative 11 – Use Discretionary Authorities to protect benthic habitats

- See H.8 Supplemental Attachment 5, & Supplemental NMFS Report
- Use discretionary authorities to close waters in EEZ deeper than 3500m to bottom contact gear
- Can also apply to existing EFH areas

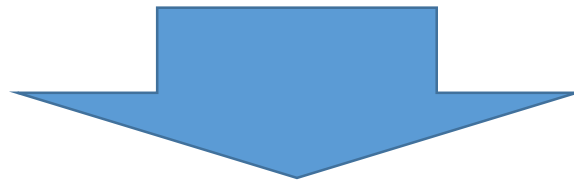
11. Use discretionary authorities	11a. No Action	11b. Use 303(b) authorities to close waters >3500m to bottom contact gear	11c. Use 303(b) authorities to close waters <700fm to bottom contact gear
-----------------------------------	----------------	---	---

Alternative 11

- 303(b) authorities within EFH
- 303(b) authorities outside EFH

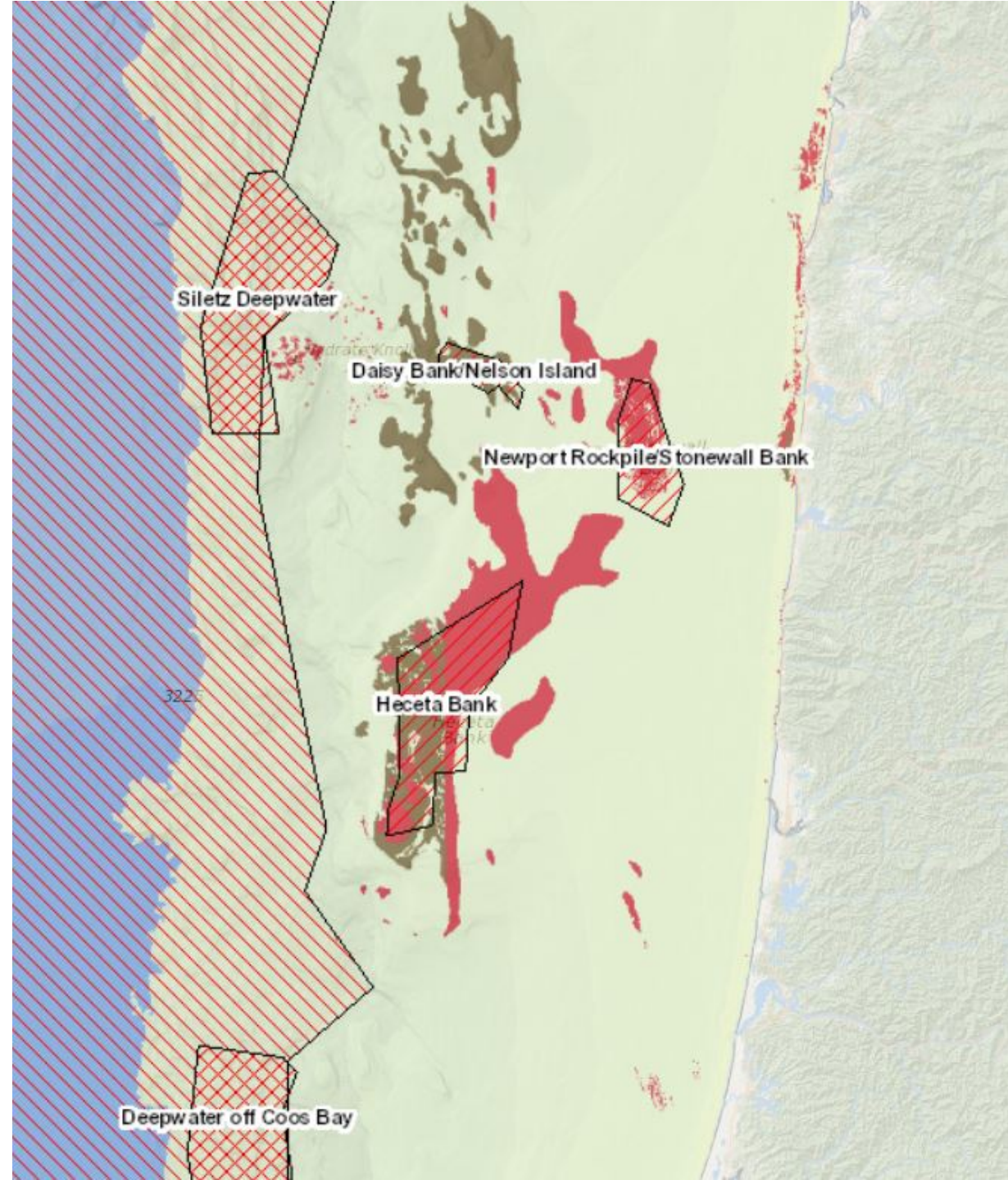


Alternative		Least Protective ----- Action Alternatives ----- Most Protective				
1. EFHCAs (benthic habitat protection)	1a. No Action	1b. Eliminate some or all of the existing....	1c. Reduce existing EFHCAs spatial extent....	1d. Adopt a combination of EFHCA....	1e. Expand existing EFHCAs to encompass...	1f. Expand existing EFHCAs....
2. Public Proposals	2a. No Action	2b. Adopt EFHCAs proposed for reopening...	2c. Adopt none of the public proposals for new opened areas or for new closed areas....		2d. Adopt expansions to existing EFHCAs....	2e. Adopt expansions to existing....
3. RCA Habitats	3a. No Action			3b. Add new EFHCAs in trawl RCA...	3c. Add new EFHCAs in trawl RCA....	3d. Add new EFHCAs in RCA.....

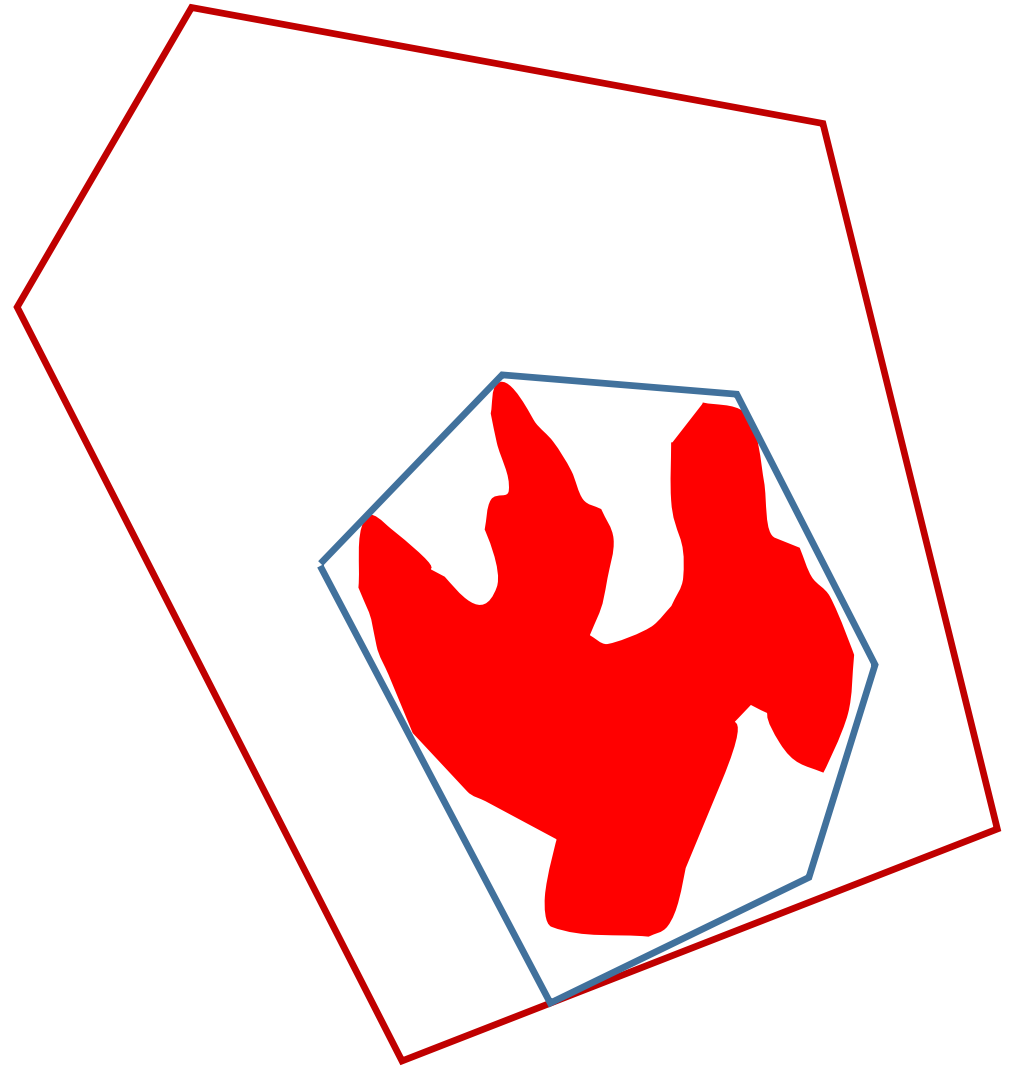


Alternative		Least Protective ----- Action Alternatives ----- Most Protective		
1. EFHCAs (EFH protection)	1a. No Action	1b. Net loss of EFH protection	1c. Minimal change in EFH protection	1d. Net increase in EFH protection

What do we mean
by.... *“Expand existing
EFHCAs to encompass
adjacent priority
habitat”*?



What do we mean
by.... *“Reduce existing
EFHCAs spatial extent,
to more closely align
with priority benthic
habitats”*?



Timeline

- September 2015 – Range of Alternatives
- April 2016 – Preliminary Preferred Alternatives
- September 2016 – Final Preferred Alternatives

Questions and Guidance

- Narrow and focus the alternatives
- Comment on Purpose and Need
- Identify priority habitats
- Research closures

Questions?