

EFH Collaborative Update

September 2015

Start with a Shared Vision

- A robust fishing industry with improved profitability.
- Stable regulations and minimal controversy.
- Intact groundfish fishing communities.
- Healthy population levels and age structures.
- Resilient ocean ecosystems, with minimal substrate disturbance or damage to sensitive organisms.

Translate Into Priority Areas for EFH

- Areas with sensitive habitat (rocks, biogenic habitat)
- Areas that create value/opportunity for industry

NOTE: Value vs. Acreage

Port Meeting Process

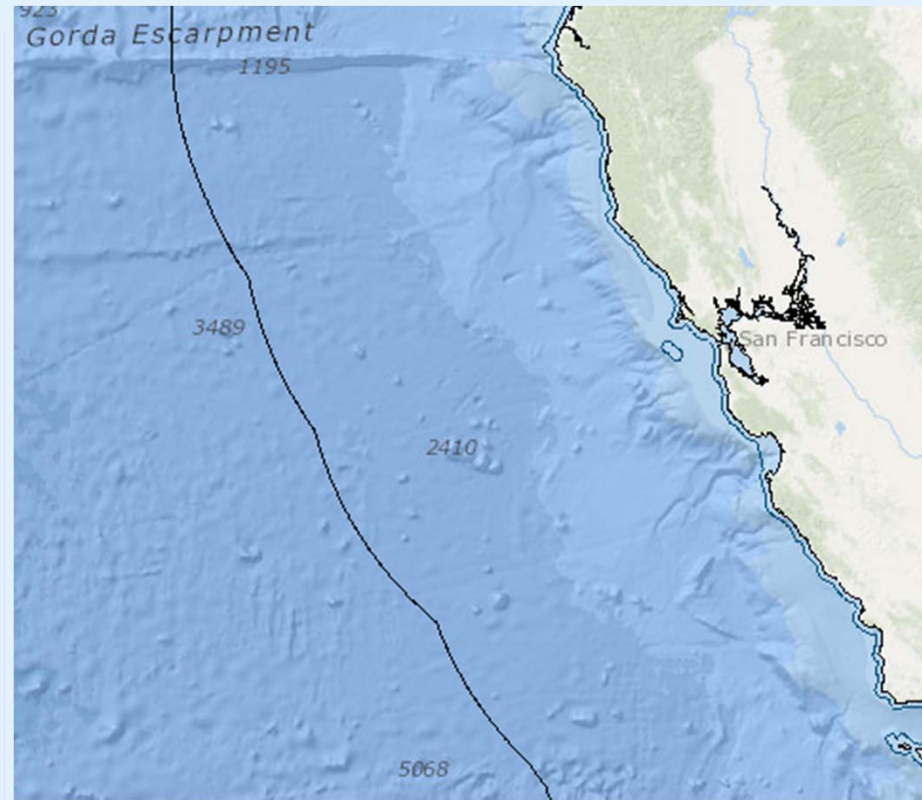
Northern and Central regions combined:

- 30+ port meetings
- Met with 50+ industry members
(out of an active bottom trawl fleet of ~70 boats)
- Additional individual and small group outreach
- Engaged with 6+ NGO groups
- Synthesized information
- Gauged consensus level

Regions

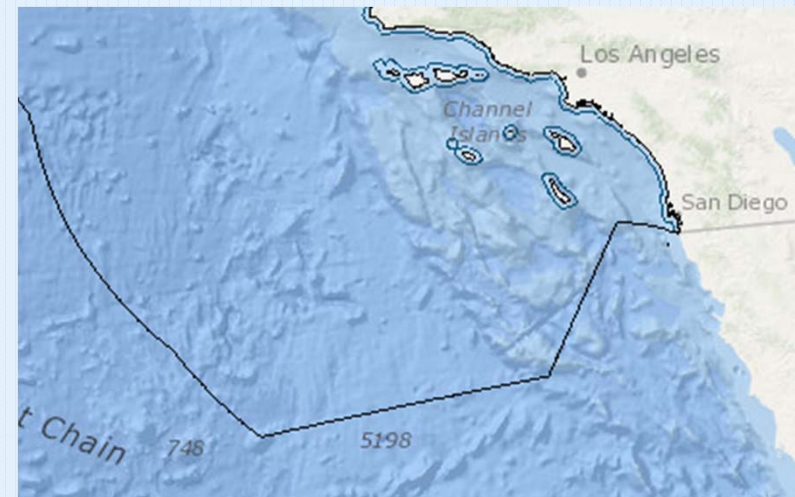


Northern



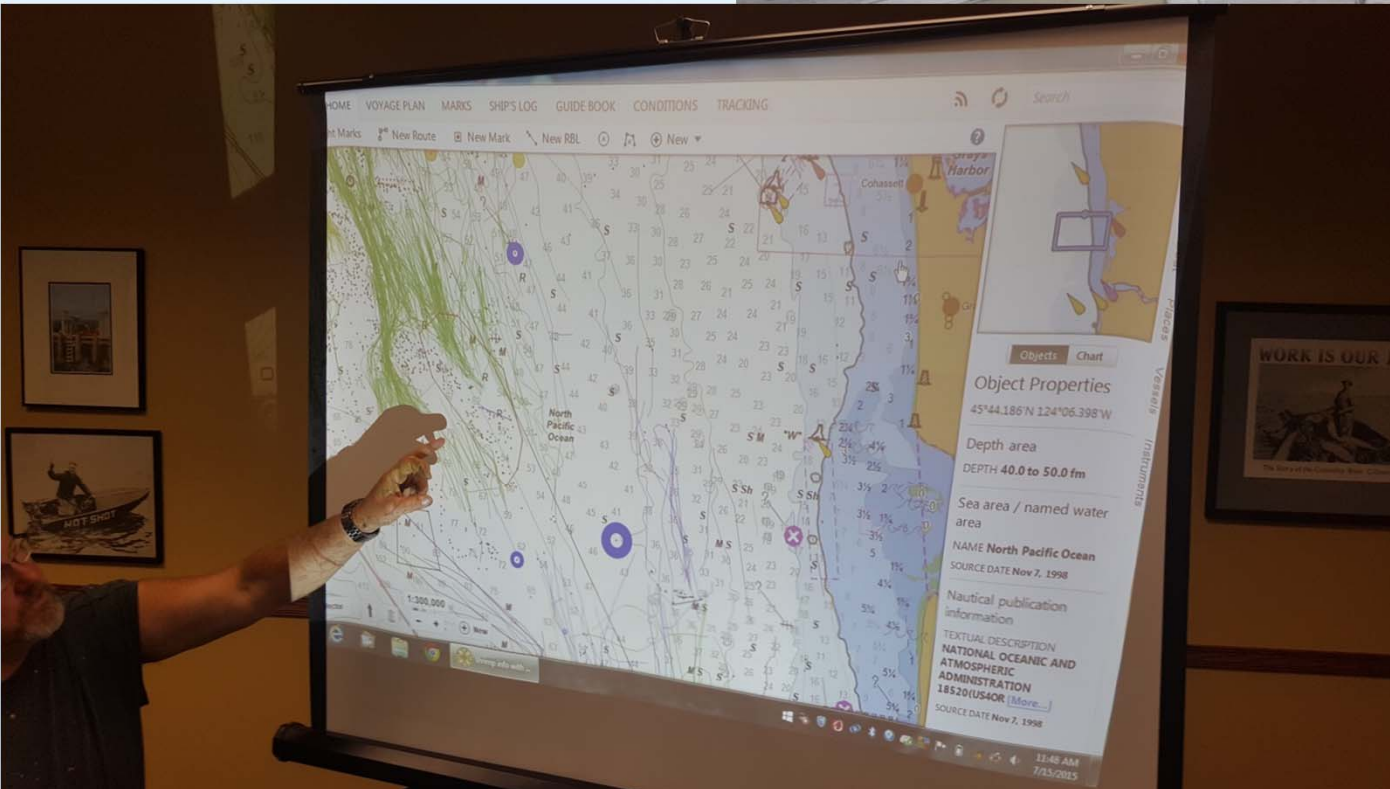
Central

Southern



Port Meetings

“Best available knowledge”



Port Meetings

“Best available knowledge”



Results

Agenda Item H.8.b Public Comment 1 Agenda Item H.8.b Supplemental Public Comment 3

Increasing habitat protection and economic opportunity through collaborative efforts to reconfigure groundfish Essential Fish Habitat Conservation Areas and the Trawl Rockfish Conservation Area

SUPPLEMENTAL REPORT

Northern Collaborative Working Group

Tom Libby
Shems Jud
Brad Pettinger
Seth Atkinson

Central Collaborative Working Group

Kate Kauer
Seth Atkinson
Shems Jud

Note: Participation in a working group does not necessarily reflect organizational or institutional endorsement of the outcomes indicated in this document.

Northern Chert
Bigge Ridge.....
Tanner and Cork
Santa Barbara Pt.
San Clemente Is.
Eastern San Cien
Coronado Shelf,
Sixty-Mile Bank,
Trawl RCA 3472
Trawl RCA area
Trawl RCA area
Trawl RCA area
Appendix: Waypoints and Co

5. Ano Nuevo to Pile

Accession Cap
MNH01 Arcen
MNH01 Lower
MNH01 South
MNH01 Outer
Monterey Bay S
MNH01 South
MNH01 South
MNH01 West e
MNH01 West e
MNH01 East q
MNH01 Tring
MNH01 San C.
MNH01 Point
MNH01 Between Fortington Point and Lopez Point
MNH01 La Cruz Canyon
MNH01 West of Pinnac Point SACA
Cambria Rough Patch
Big Sur Coast Modification
Trawl RCA 37°07' to 34°21'

Southern Region

Point Conception to Mexico
Western Line Adjustment
Outer Bank

Mendocino Ridge
Trawl RCA 42°S
Central Region
4. 49°19' to Ano Nuevo
Delgado Canyon
Spanish Canyon
Spanish Canyon
Narrow Canyon
Point Arena East
Point Arena East
Point Arena East
Point Arena East
The Footfall
Gabbler's Knob
Cordell Bank Modification 1
Cordell Bank Modification 2
Cordell Bank Modification 3
Cordell Bank Modification 4
Point Reyes Reef
Rimousin Bank
Farallon Islands Modification
Farallon Excavation
Pescadero Reef
Pigeon Point Reef
Trawl RCA 49°19' to 37°01'

Dairy Bank North
Dairy Bank West
Dairy Bank South
Hecata Bank ME
Arango Reef
Random High Sp
Random High Sp
Trawl RCA 45°4
Trawl RCA 43°S

3. Cape Blanco to 49°

Blanco Reef
Pigeon River Reef
Brush Patch
Saint George Ra
Reading Rock Is
Reading Rock Shelf/Slope Break
Treaded Canyon
Mad River Rough Patch
East River Canyon Modification 1
East River Canyon Modification 2
East River Canyon Modification 3
East River Canyon Modification 4
Blunts Reef Modification
Mendocino Ridge Modification 1
Mendocino Ridge Modification 2

2. Cape Falcon to Cape Blanco

Garibaldi Reef
Stonewall Bank Modification

Table of Contents	
Introduction	1
Northern Region	3
1. Canada to Cape Falcon	5
Nimitz Canyon	8
Olympic 2 Northeastern Modification	8
Olympic 2 Southeastern Modification	10
Olympic 2 Western Modification	12
Biogenic 1 Southern Modification	13
Biogenic 2 Northern Modification	14
Biogenic 2 Eastern Modification	15
Grays Canyon Northern Modification	15
Grays Canyon Eastern Modification	17
Grays Canyon Western Modification	17
Grays Canyon Southern Modification	18
Willapa Shelf	19
Willapa Deep	20
Astoria Deep	20
Trawl RCA Canada to 49°00'	21
Trawl RCA 48°00' to 45°46'	23
2. Cape Falcon to Cape Blanco	24
Garibaldi Reef	27
Stonewall Bank Modification	28

ii

iii

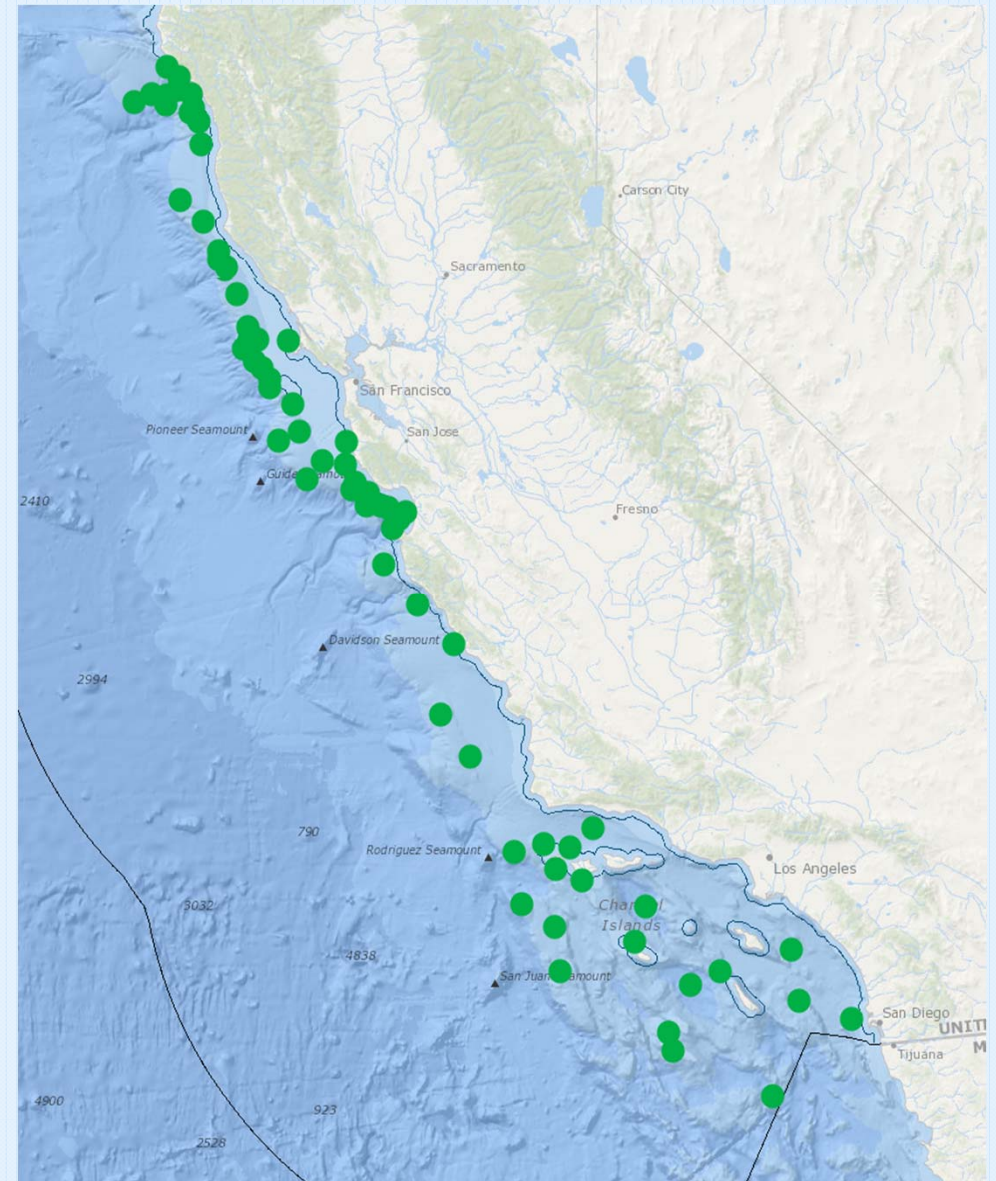
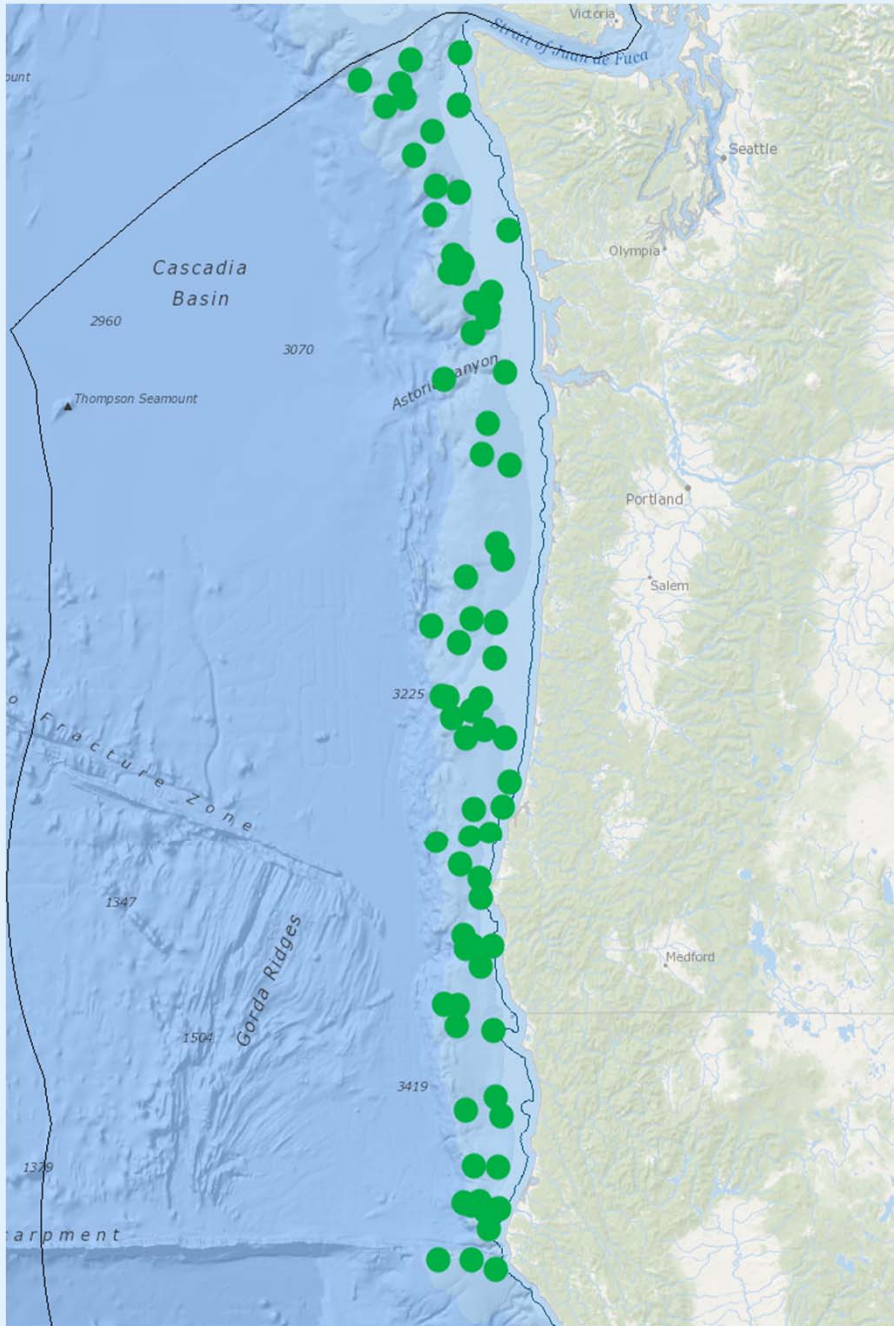
iv

v

Results

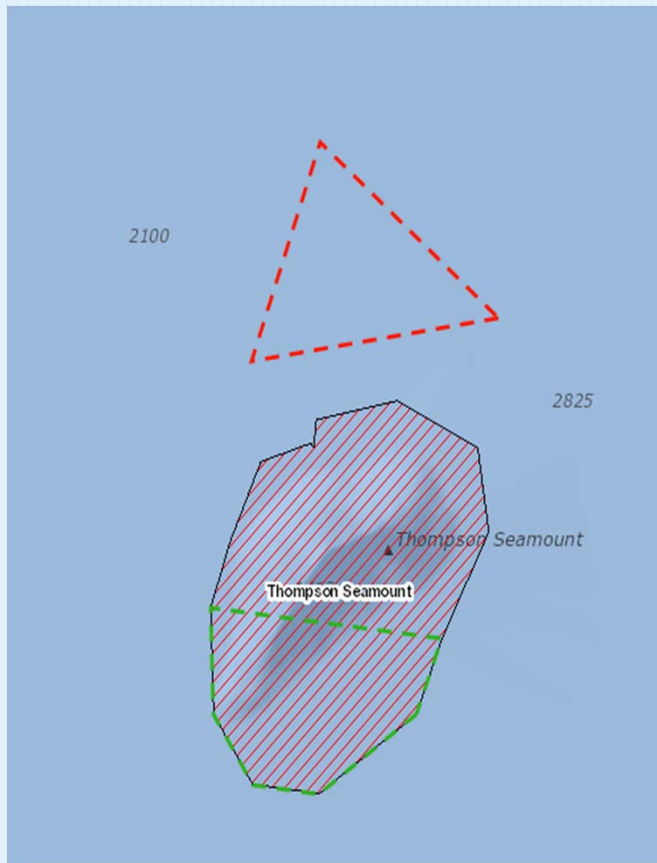
- Nearly 150 discrete areas discussed (“green dots”)
- 100 specific areas considered for boundary modifications (“shapes”)
- Different types of areas:
 - EFH closure
 - EFH opening
 - RCA opening
- Different recommendation status:
 - Full Recommendation
 - Recommendation in Progress
 - No Recommendation

Areas Discussed

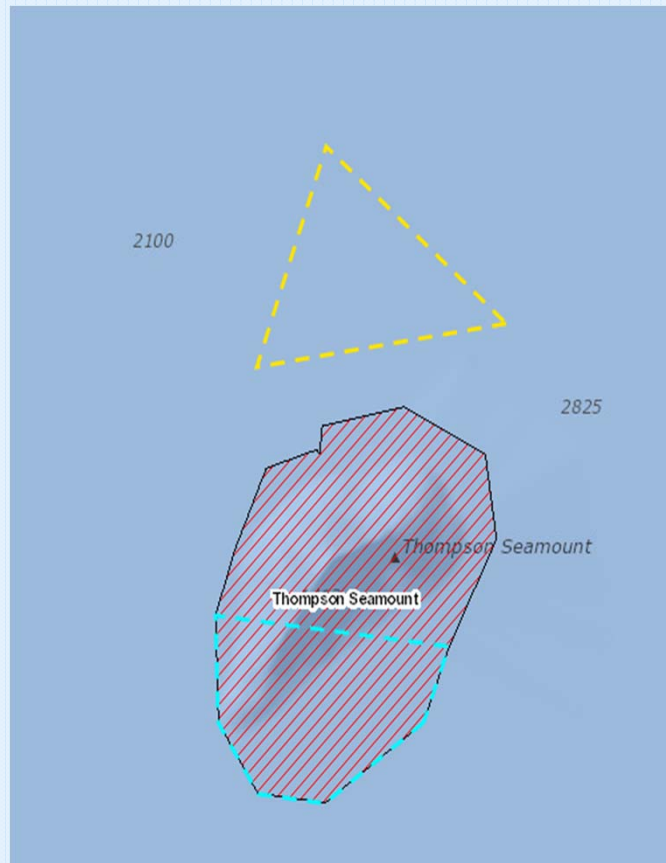


Types of Recommendation

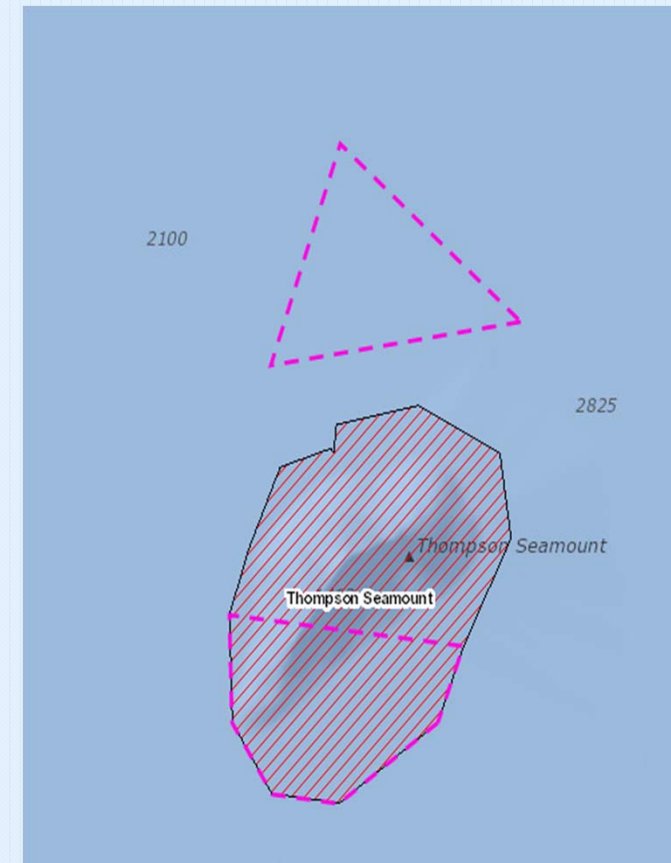
Full Recommendation

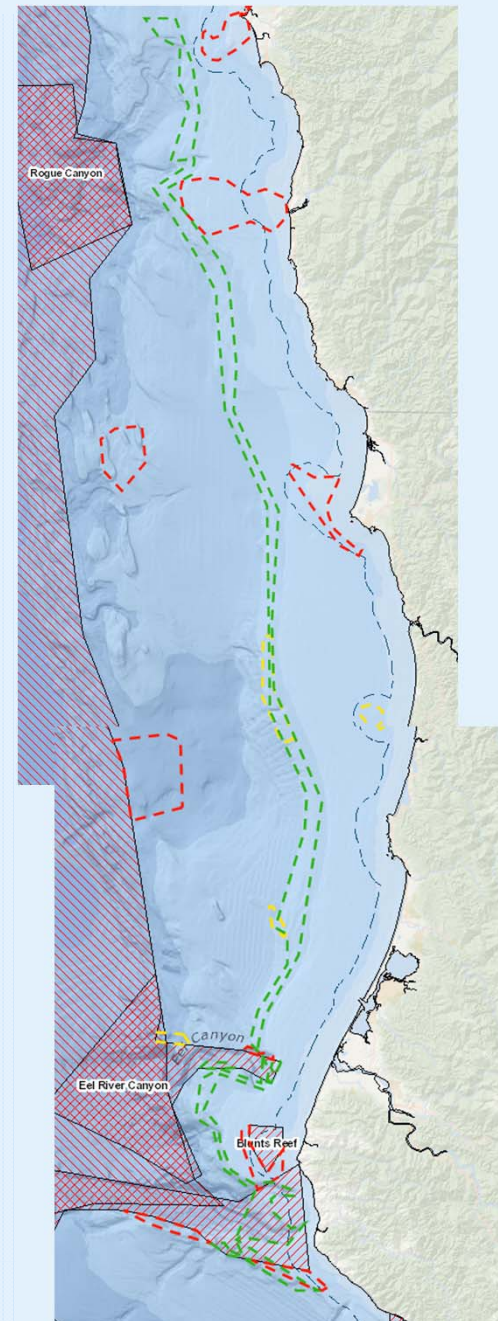
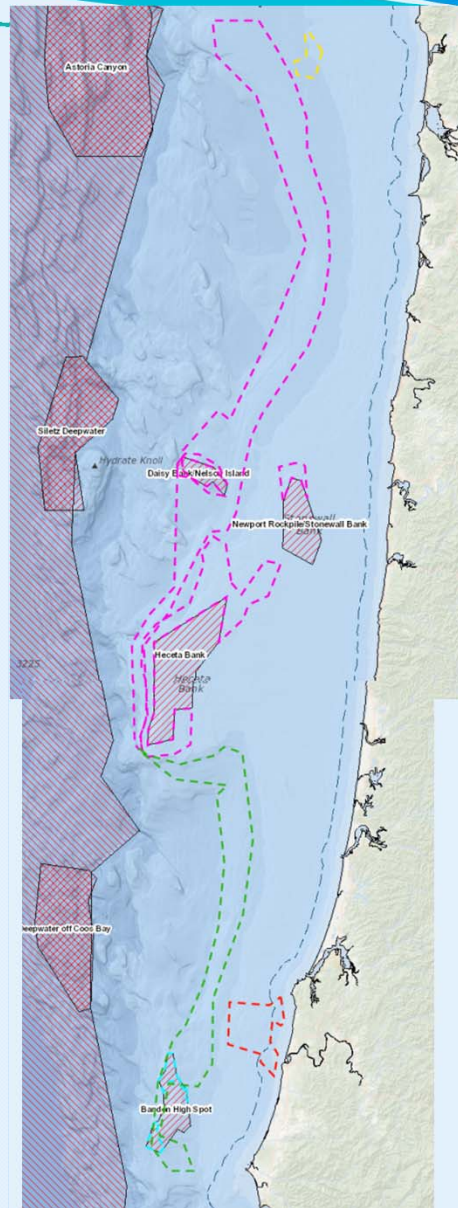
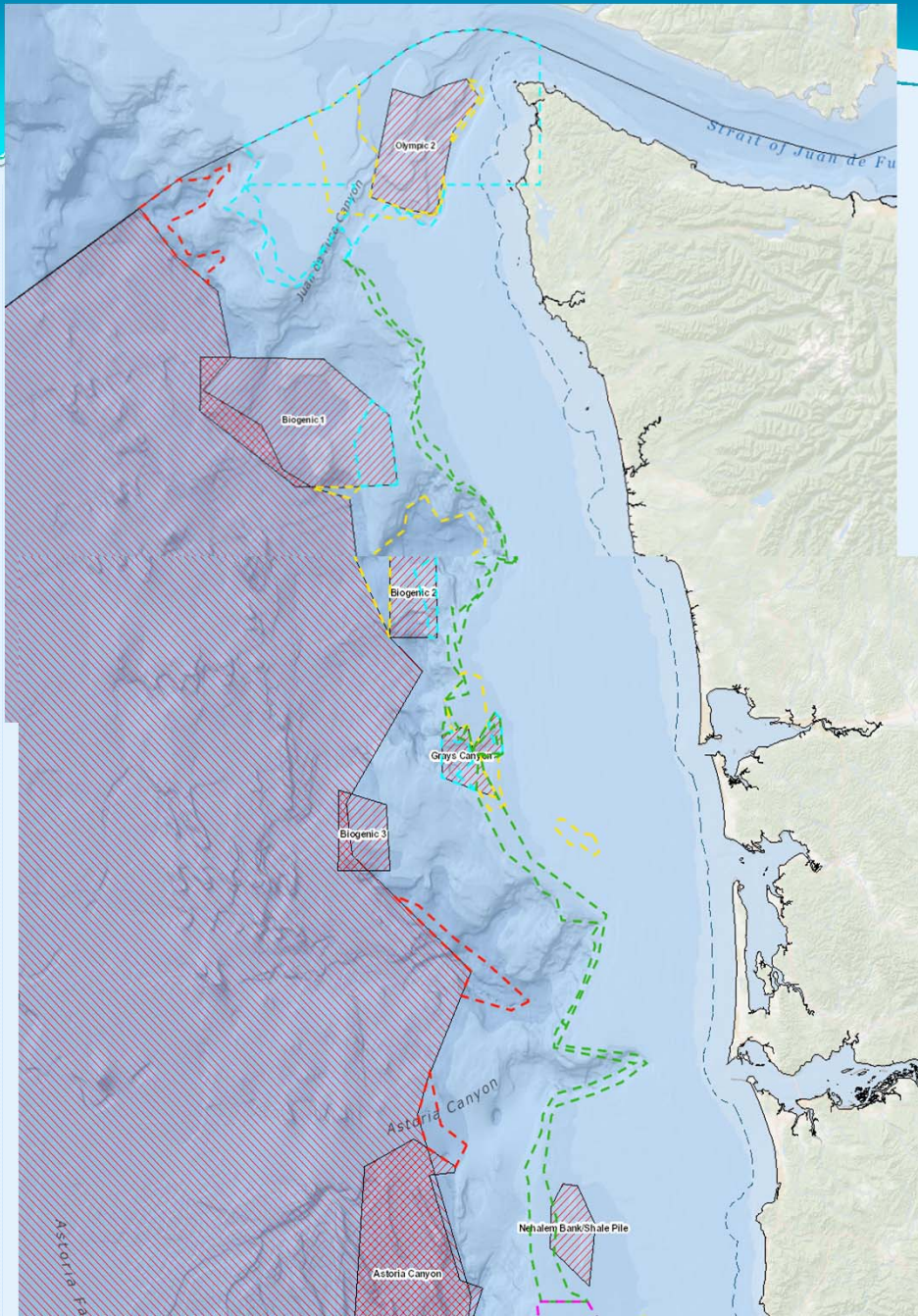


Recommendation in Progress



No Recommendation

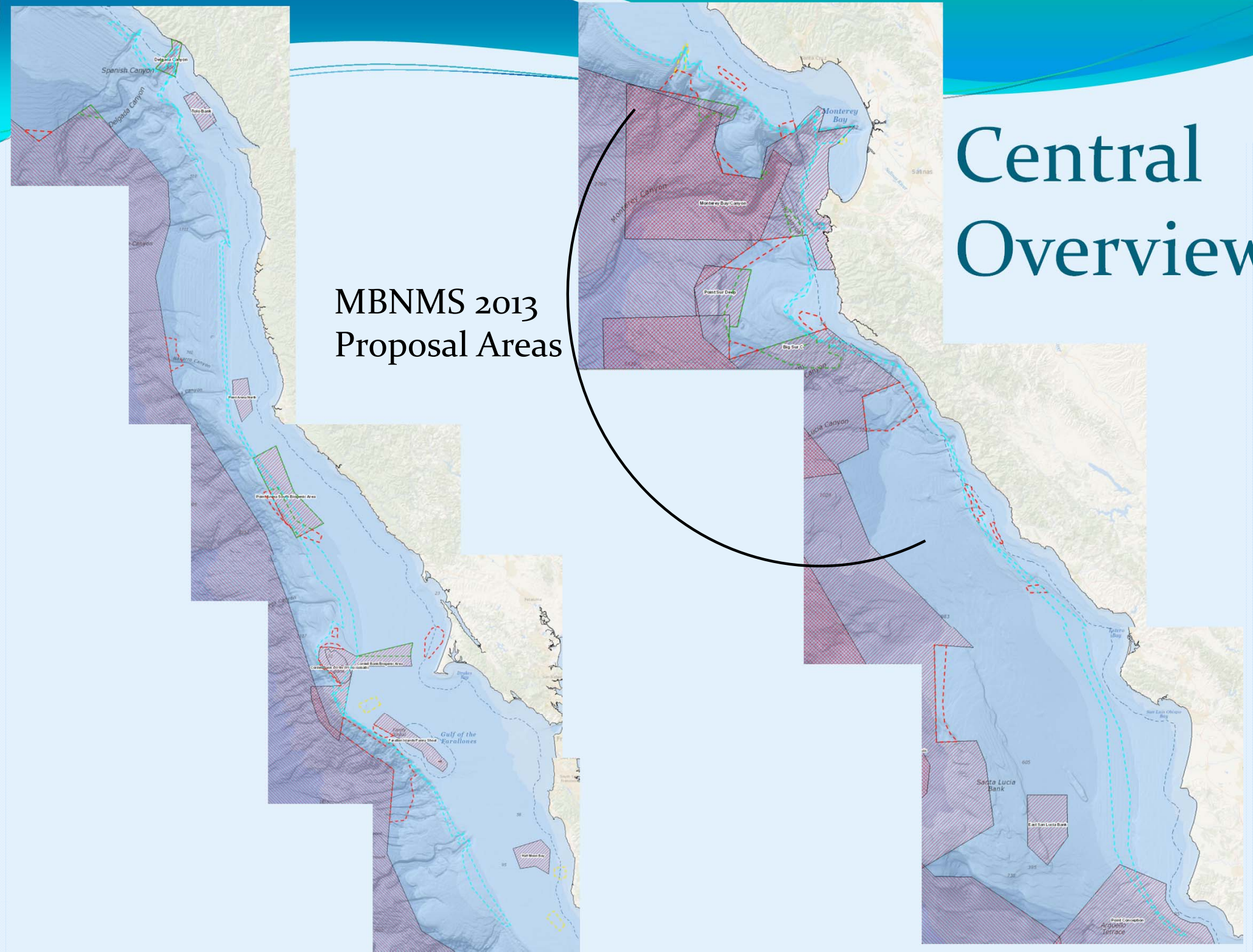




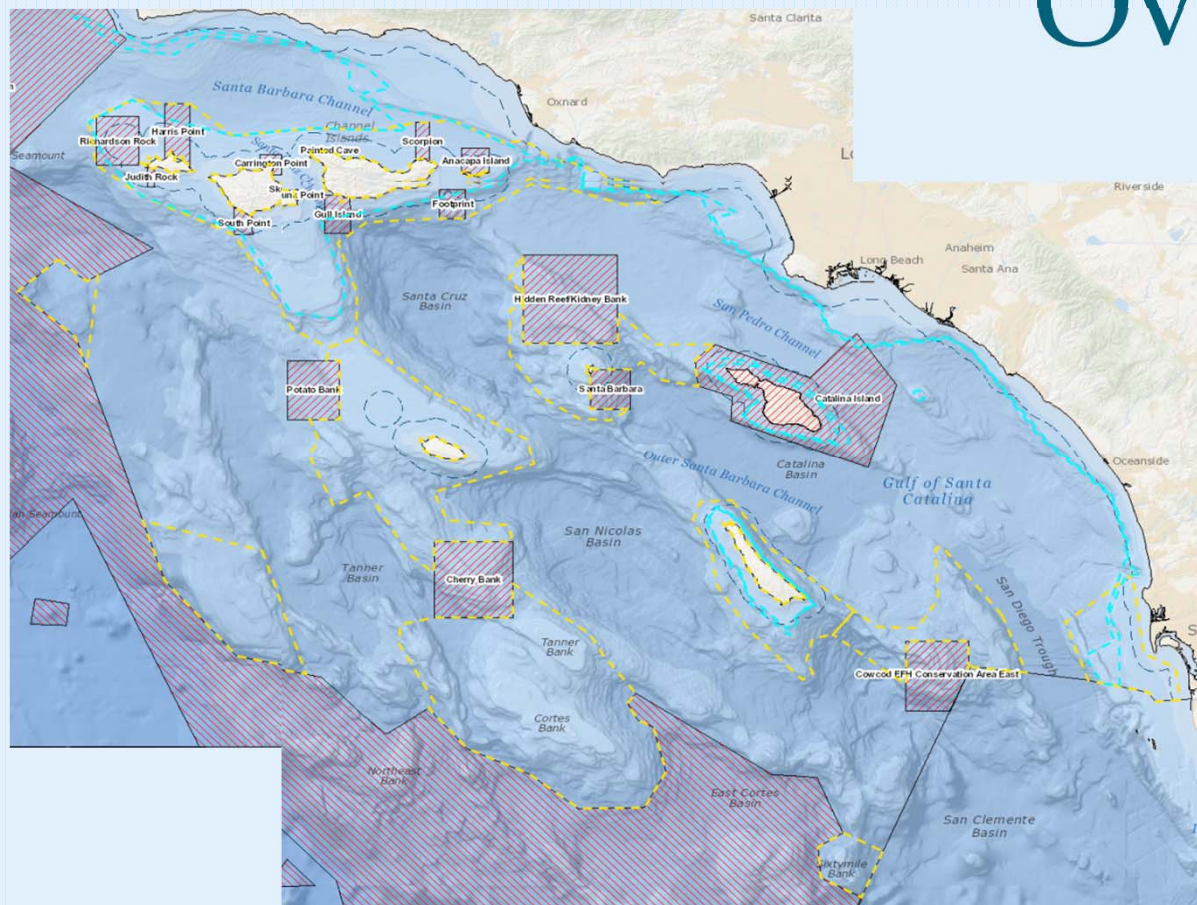
Northern Overview

Central Overview

MBNMS 2013
Proposal Areas



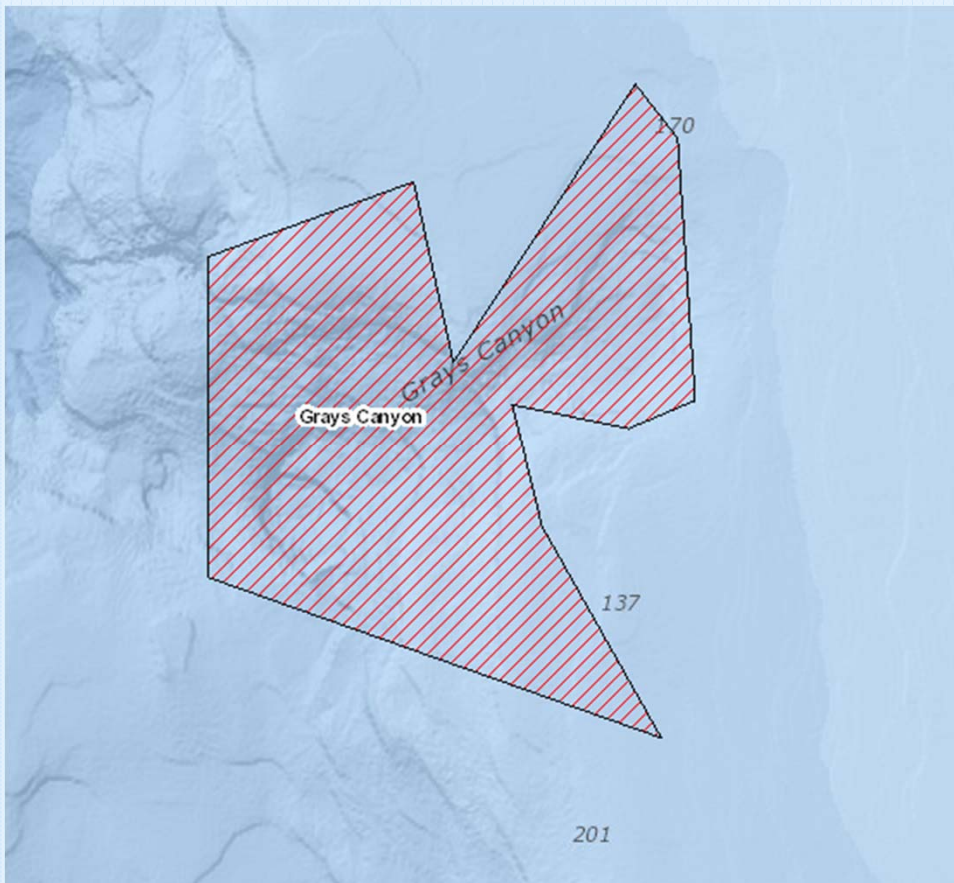
Southern Overview



Example of Reasoning: Grays Canyon

- Amendment 19 in 2006 established an EFH Conservation Area at Grays Canyon.
- Given the state of knowledge at the time, the EFH Conservation Area ended up protecting mostly soft muddy bottom and missed areas of sensitive biogenic habitat.
- Meetings with fishermen highlighted importance of the area for fishing, and corroborated the new EFH Data Catalog information showing important habitat outside the existing EFH Conservation Area.

Grays Canyon: Amendment 19



In port meetings, fishermen noted that the existing shape missed good habitat, and closed areas of soft bottom that were important historical fishing grounds.

The EFH Data Catalog corroborated the existence of sensitive habitat (sponge reefs) on the north and south shoulders of the canyon.

Grays Canyon: First Draft



Draft shapes sketched in port meetings, based on fishermen's knowledge and EFH Data Catalog data layers.

Circulated to fleet, NGOs, and other stakeholders for feedback.

Grays Canyon: Feedback



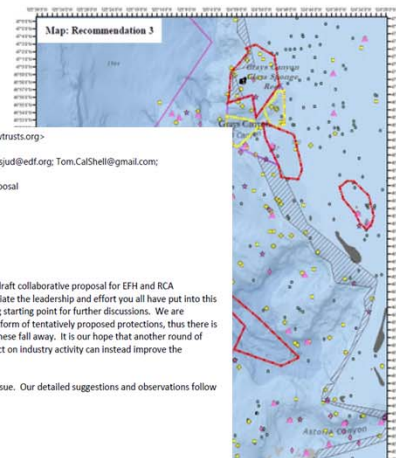
DT: July 13, 2015
 TO: Mariel Combs, Seth Atkinson, Brad Pettinger, Tom Libby and Shems Jud (EFH collaborative steering committee)
 FR: Ben Enticknap & Brianne Mecum, Oceana, and Greg Helms, Ocean Conservancy
 RE: Review of draft Collaborative EFH Proposal

SUMMARY

Our groups appreciate the invitation by the Essential Fish Habitat (EFH) collaborative to comment on the preliminary package of EFH and trawl Rockfish Conservation Area (RCA) changes. We share the collaborative's vision for a durable and widely agreeable outcome that balances protection of sensitive habitat areas with expanded opportunities for vibrant, sustainable fishing. As we know, that balance will be tested in formal ways as NOAA and the PFMC move EFH and RCA proposals through its process. A robust collaborative proposal could pave the path to success.

To aid our feedback on the preliminary draft June 18 collaborative package, we looked carefully at how it compares to current 'status quo' fishing, existing EFH conservation areas and the RCA - what existing habitat and effort data tell us about the probable effects of the preliminary package - and compared these with the package we submitted to the PFMC during its request for proposals in 2013. Our analysis presented in this document helped us come to eight proposed area recommendations that are summarized below, as well as some overarching findings. We hope you will dig into these recommendations, our analysis, and the full discussion that is laid out and illustrated in this document as you make final modifications to the collaborative proposal.

3. We can support these five proposed closures and the re-openings at Grays Canyon. We can support the proposed re-openings at Grays Canyon EFH Conservation because they would be in combination with the protection of the Grays Canyon glass sponge reef and the southern site immediately adjacent to the Grays Canyon EFH area, providing an overall net conservation benefit in Grays Canyon area. These are ecologically important areas that may be unique on the U.S. West Coast and should be protected. Overall this new configuration of the Grays Canyon area provides a net increase in habitat protection at Grays Canyon. The other three proposed closures provide for overall improved habitat representation in the Astoria region.



From: Tom Rudolph <Trudolph@pewtrusts.org>
 Sent: Monday, July 13, 2015 4:48 PM
 To: Atkinson, Seth; Combs, Mariel; sjud@edf.org; Tom.CalShell@gmail.com; bpettinger@ottrawl.net
 Subject: Feedback on Collaborative Proposal

Follow Up Flag: Follow up
 Flag Status: Flagged

Dear Mariel, Seth, Brad, Shems, and Tom:

Thank you for the opportunity to provide some feedback on the draft collaborative proposal for EFH and RCA openings/closures that you all have been working on. We appreciate the leadership and effort you all have put into this process and this package. Our initial assessment is this is a strong starting point for further discussions. We are concerned that there is a lot of uncertainty in the proposal in the form of tentatively proposed protections, thus there is potential for a dramatic shift in the overall outcomes if many of these fall away. It is our hope that another round of working to identify potential protections that have minimal impact on industry activity can instead improve the conservation balance.

And again we thank you for your efforts to lead the way on this issue. Our detailed suggestions and observations follow below.

Sincerely,

Tom (on behalf of the entire Pew regional team)

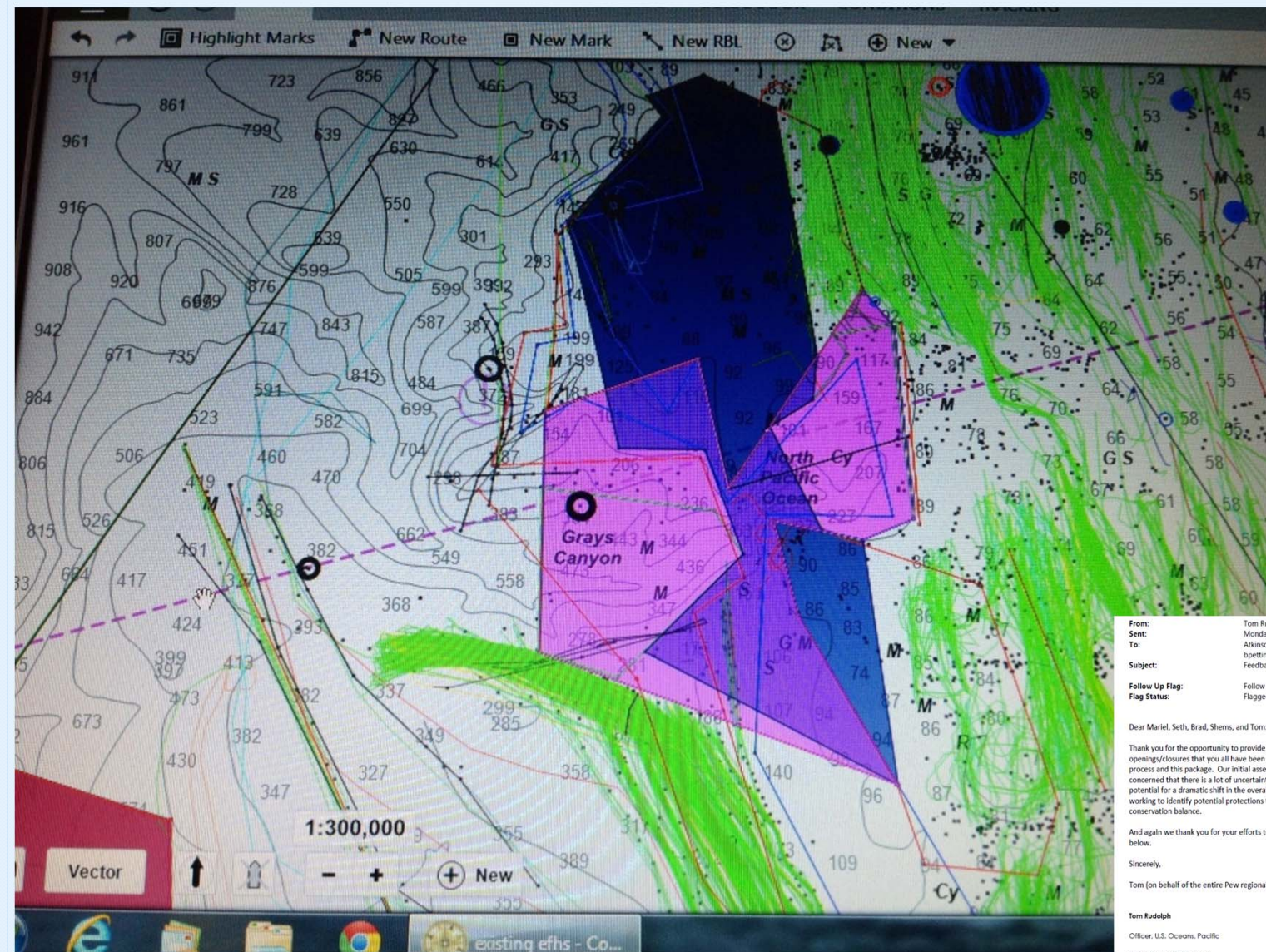
Tom Rudolph

Officer, U.S. Oceans, Pacific

The Pew Charitable Trusts

111 SW Columbia Street, Suite 200, Portland, OR 97201

p: 503.230.0722 | f: 503.230.0903 | m: 508.776.8056 | e: trudolph@pewtrusts.org | www.pewtrusts.org



Grays Canyon: Current Draft



Adds protection for areas of known sensitive habitat.

Improves fishing opportunity (in areas of less-sensitive habitat).

Avoids specific areas that would create problems for the fleet.

Based on scientific data as well as fishermen's knowledge.

The Trawl RCA

Context:

- Rationale for closing the Trawl RCA was mortality reduction for overfished species.
- Catch shares + 100% monitoring = individual accountability for bycatch of overfished species.
- Overfished species are rebuilding.
- Interest by fleet in regaining access to areas closed by the Trawl RCA.
- Willingness among fishermen to manage their own bycatch.

The Trawl RCA

Approach:

- Scrutinize the Trawl RCA for areas of important or sensitive habitat.
- Cover these areas with new or expanded EFH Conservation Areas.
- In this way create assurance that habitat will remain protected when the RCA is lifted.

Going Forward

- Further stakeholder outreach this fall and winter as needed.
- Areas currently classified as “Recommendation in Progress” hopefully will evolve into “Full Recommendation” areas.

(Note that areas may change somewhat as they evolve)
- Frequent check-ins with plan amendment team as areas get finalized.

Caveats and Notes

- No changes to the “no bottom contact” EFH Conservation Areas.
- Areas within state waters require further discussion with the states (CA & OR), and may continue to evolve.
- Supplemental Report 3 is a best effort but may contain minor errors and omissions.

Final coordinates and shape files will be provided directly to the plan amendment team.

- Thumb drives with revised boundaries will be provided to the fleet after the action is completed.