

Agenda Item H.6.a
Supplemental NMFS PowerPoint
(Electronic Only)
September 2015



NOAA
FISHERIES

West
Coast
Region

Salmon

Consultation on the

Pacific Coast

Groundfish Fishery:

Update

September 12-14, 2015



In June, NMFS requested input on:

- Expected salmon bycatch
- Expected distribution of salmon bycatch among groundfish sectors, particularly Chinook
- Measures that minimize salmon bycatch
- Necessary to define the *proposed action*, provide *robust consultation*, allow *flexibility in fishery*



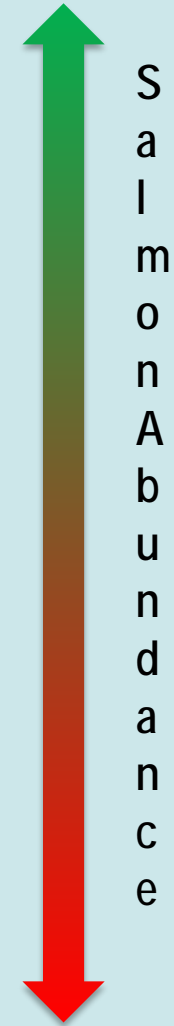
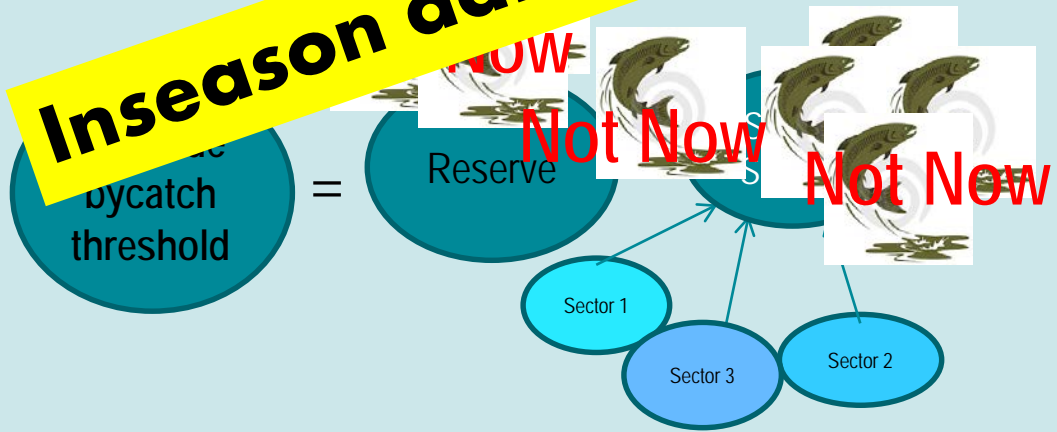
SALMON BYCATCH WORKSHOP



New ideas for Bycatch Frameworks?



Inseason data important!



Not Now



Actions affecting bycatch?



COOP agreements working but need the details



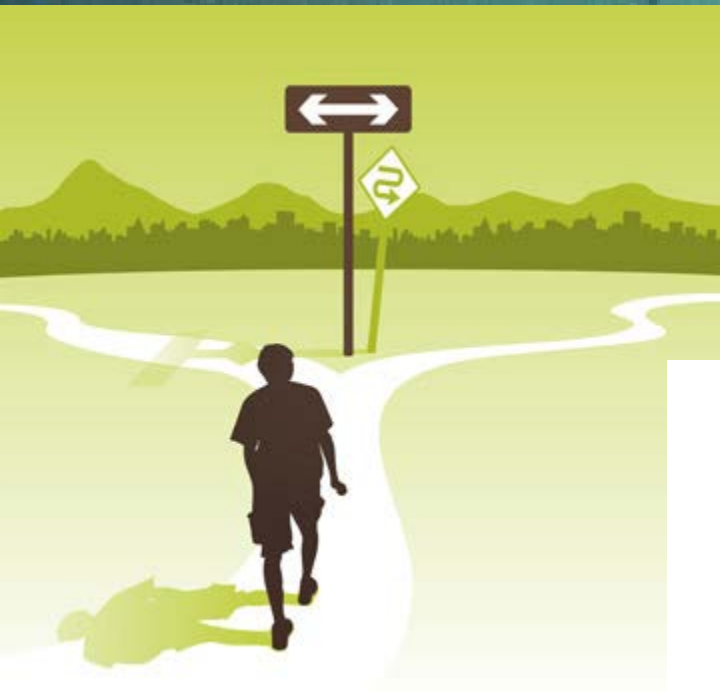
cooperation among vessels under IFQ program



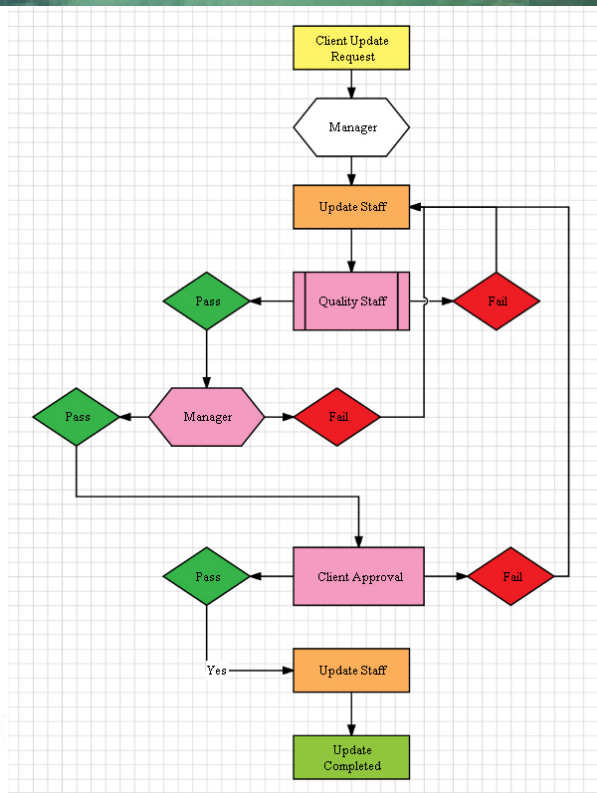
Not much change to at-sea sector salmon bycatch

Future IFQ fishery changes could significantly affect salmon bycatch but uncertain how

Re-evaluate processing south of 42° and OSCZ actions



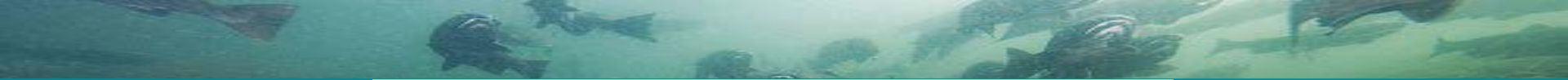
Who?



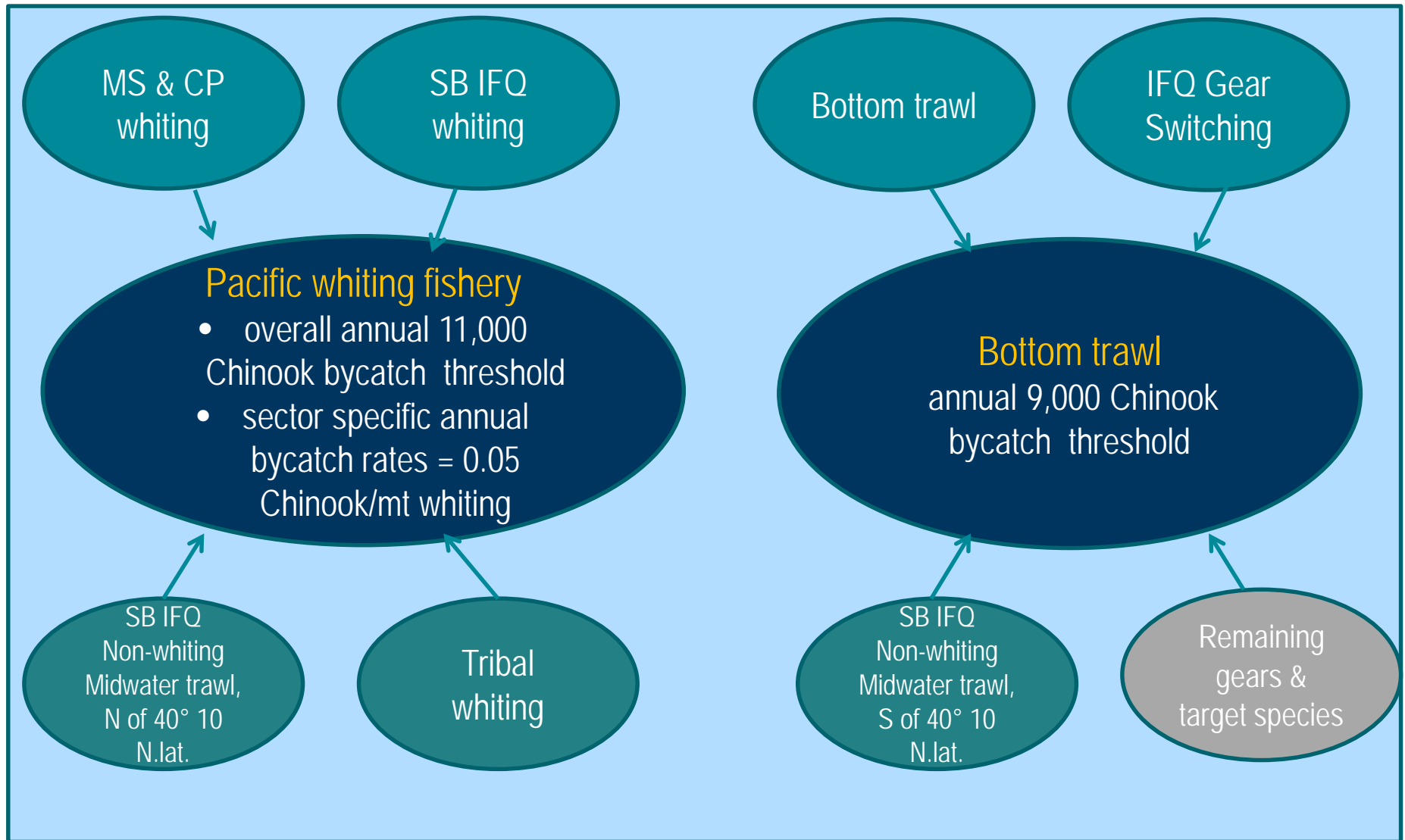
What?

How?





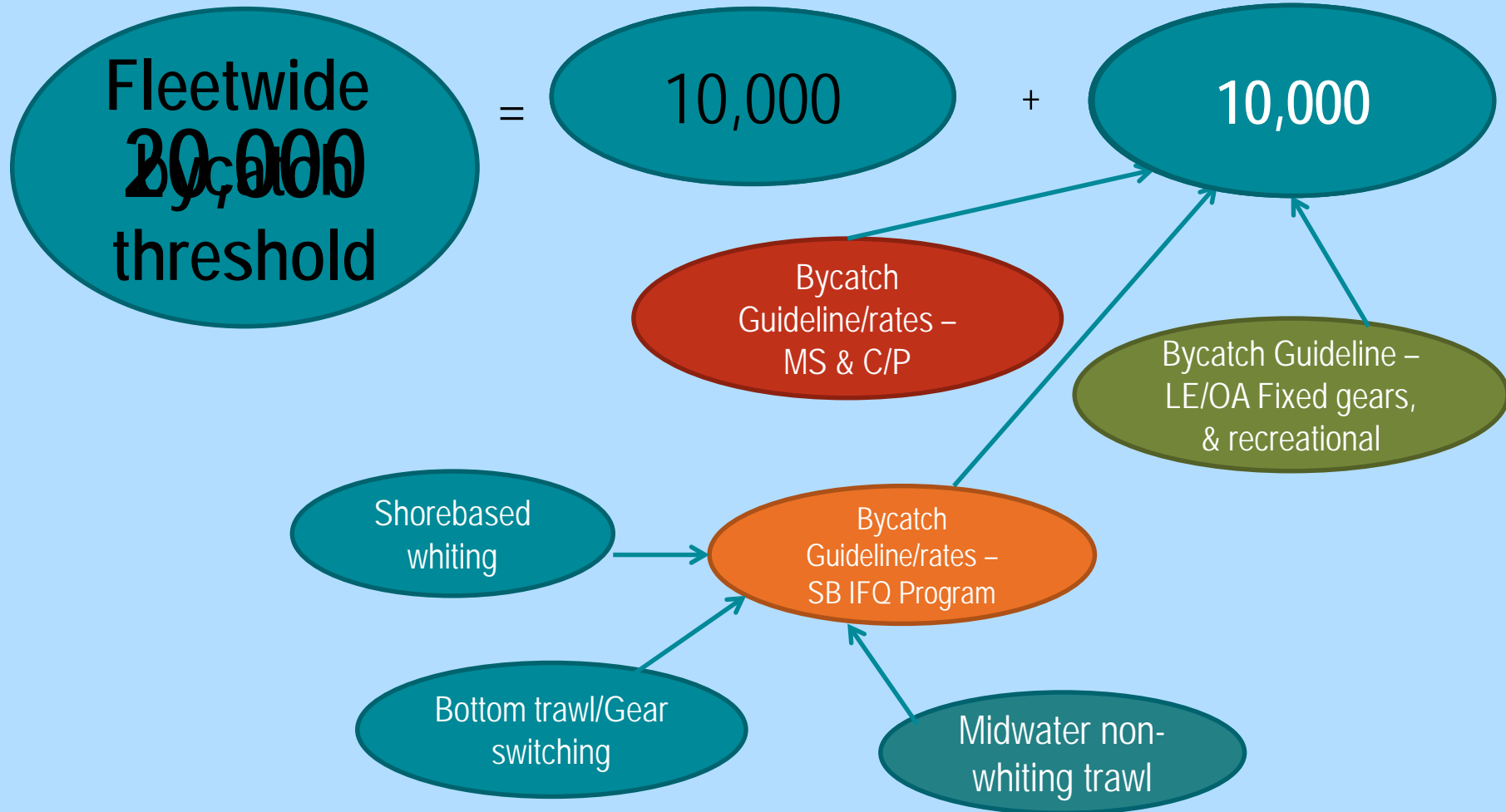
Proposal 1: Current Framework (evolving)



Trends in Chinook Bycatch in Groundfish Fishery



Proposal 2: Workshop feedback



Proposal 2: Details

Bycatch Guideline - MS & C/P

- Number of Chinook (coastwide or regional) bycatch rate per mt whiting
- Salmon bycatch measures in annual coop permit application; performance assessed in annual report
- If bycatch guideline is reached, OSCZ goes into effect
- Other measures would stay in place.

Proposal 2: Details

Bycatch Guideline – Shorebased IFQ Program

- Overall IFQ guideline for # of Chinook with sub-guidelines for SB whiting, non-whiting midwater trawl, and bottom trawl/gear switching.
- SB whiting = bycatch rate per mt whiting.
- If SB whiting guideline is reached, OSCZ goes into effect
- Midwater trawl closures: Columbia & Klamath rivers, inside 100 fm in Eureka area.
- Clear criteria for whiting and non-whiting bycatch in subguidelines

Proposal 2: Details

Bycatch Guideline – LE & OA Fixed gears, & recreational

- Number of Chinook for these sectors combined
- Historical catch very low = post season monitoring
- Consideration for Reserve in case of overage

Proposal 2: Details

Reserve

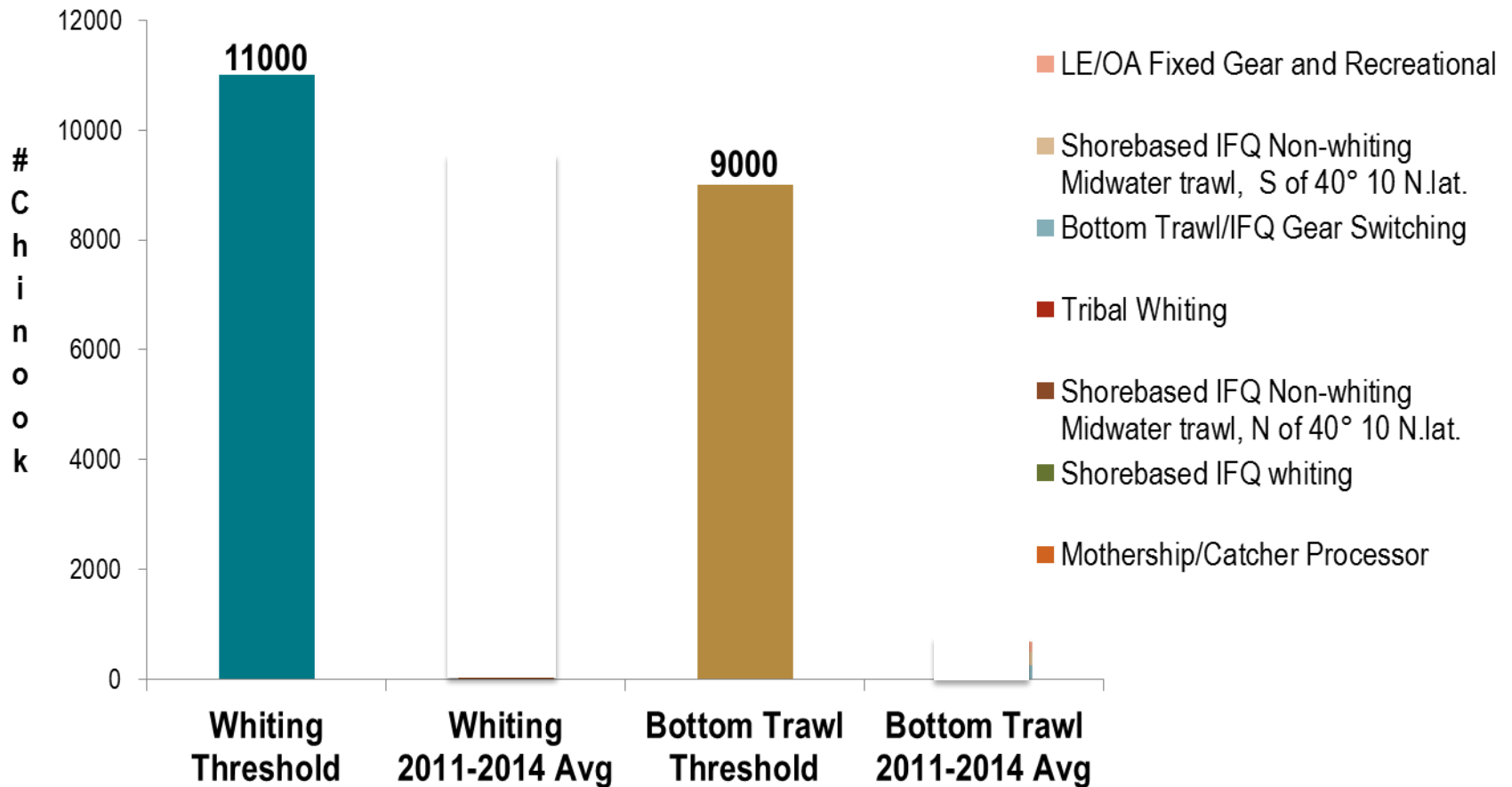
- Establish rules and performance measures for distribution if sector exceeds guideline
- Automatic action via pre-established rules least disruptive
- Set aside a portion of reserve for uncertainty in fisheries not monitored inseason



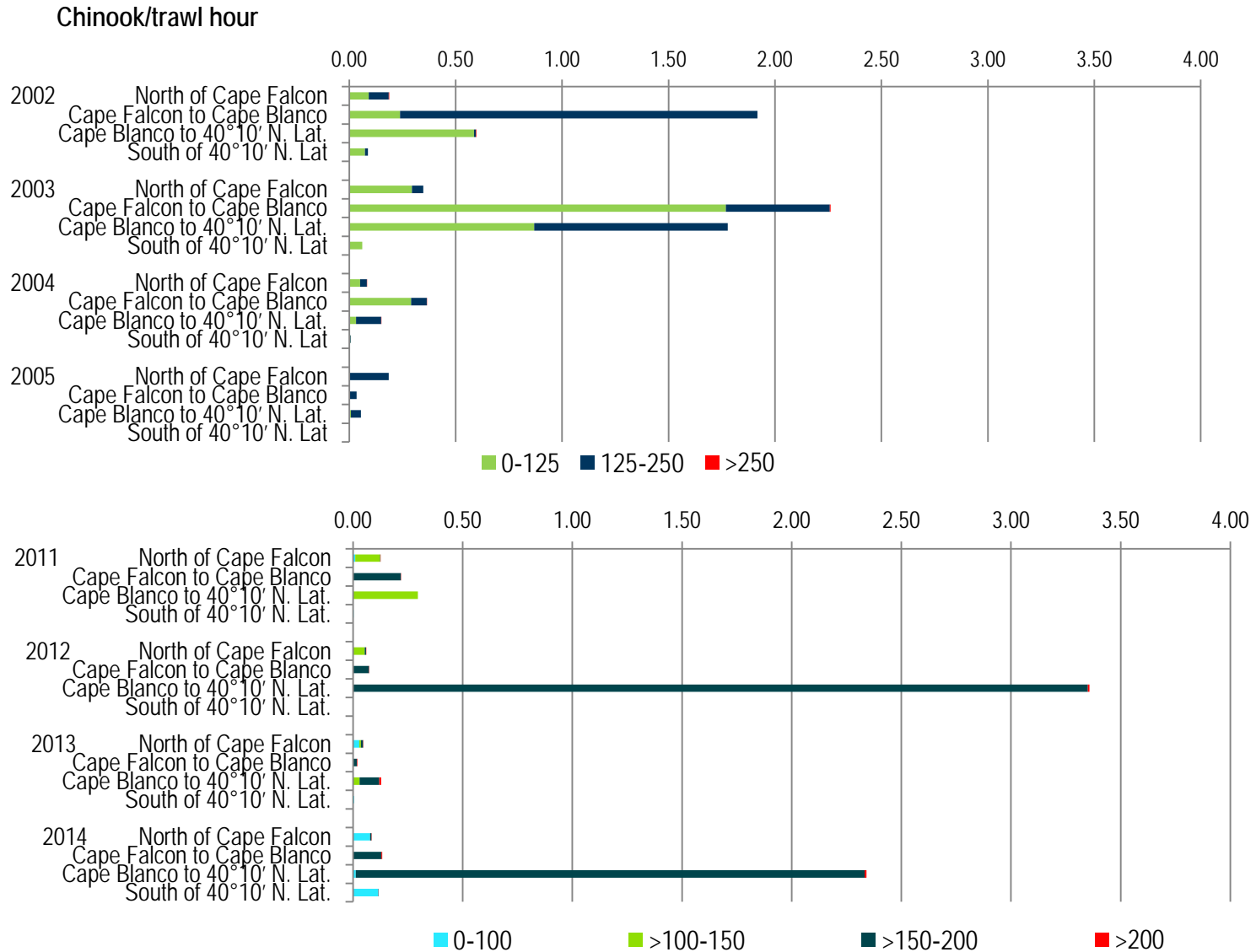
A robust, flexible approach considers



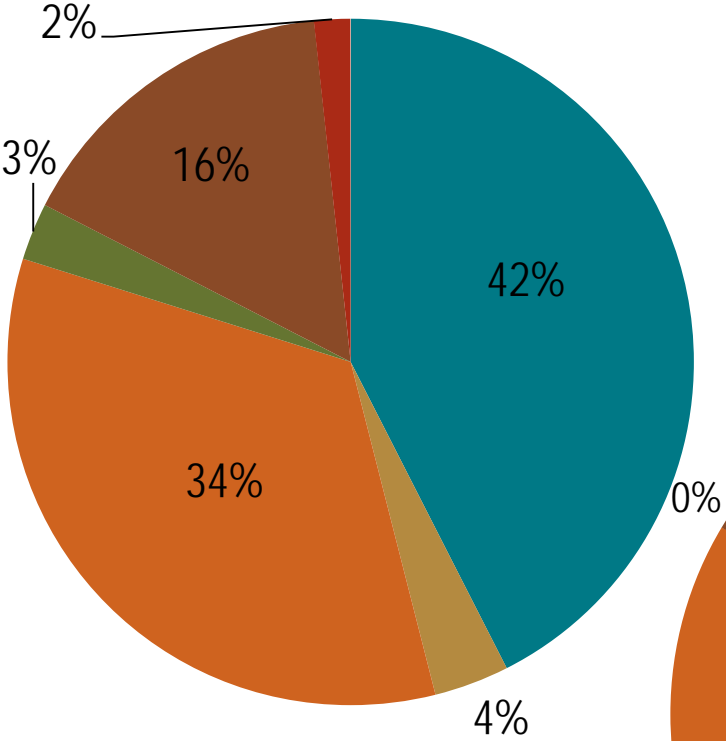
Thresholds must be supported by best available information



Bottom trawl bycatch - further south, more compressed, greater depths than in early 2000s.



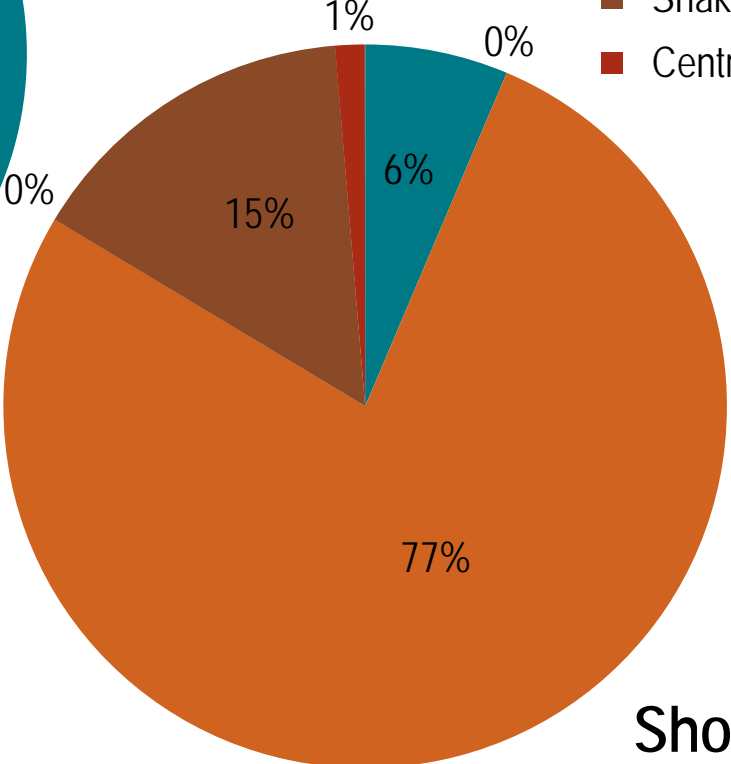
Composition of ESA listed Chinook bycatch varies by sector



At-sea

2009-2013

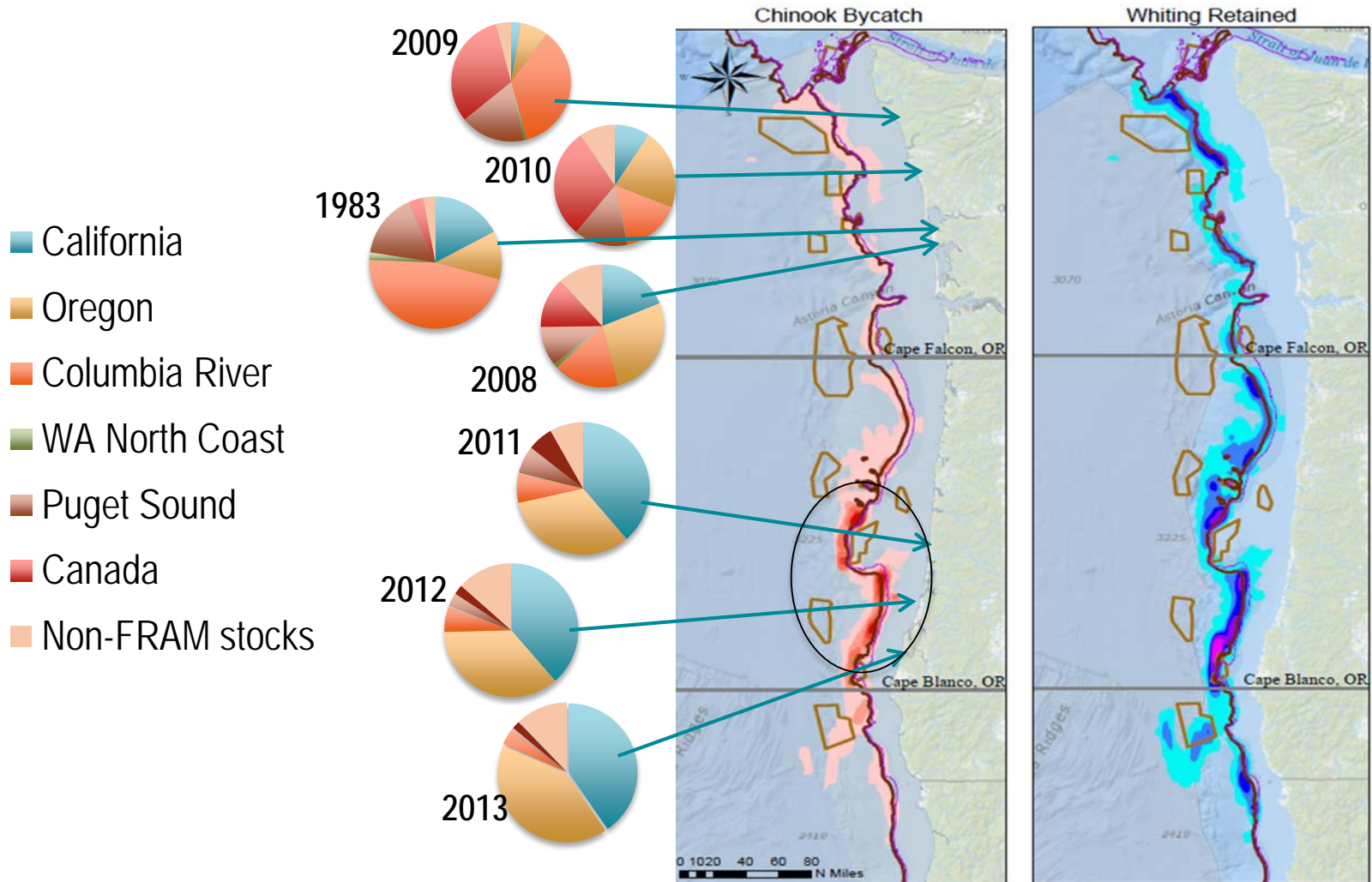
- Puget Sound Chinook
- Upper Willamette River Chinook
- Lower Columbia River Chinook
- Snake River spring/summer run
- Snake River Fall run
- Central Valley Spring run



Shorebased

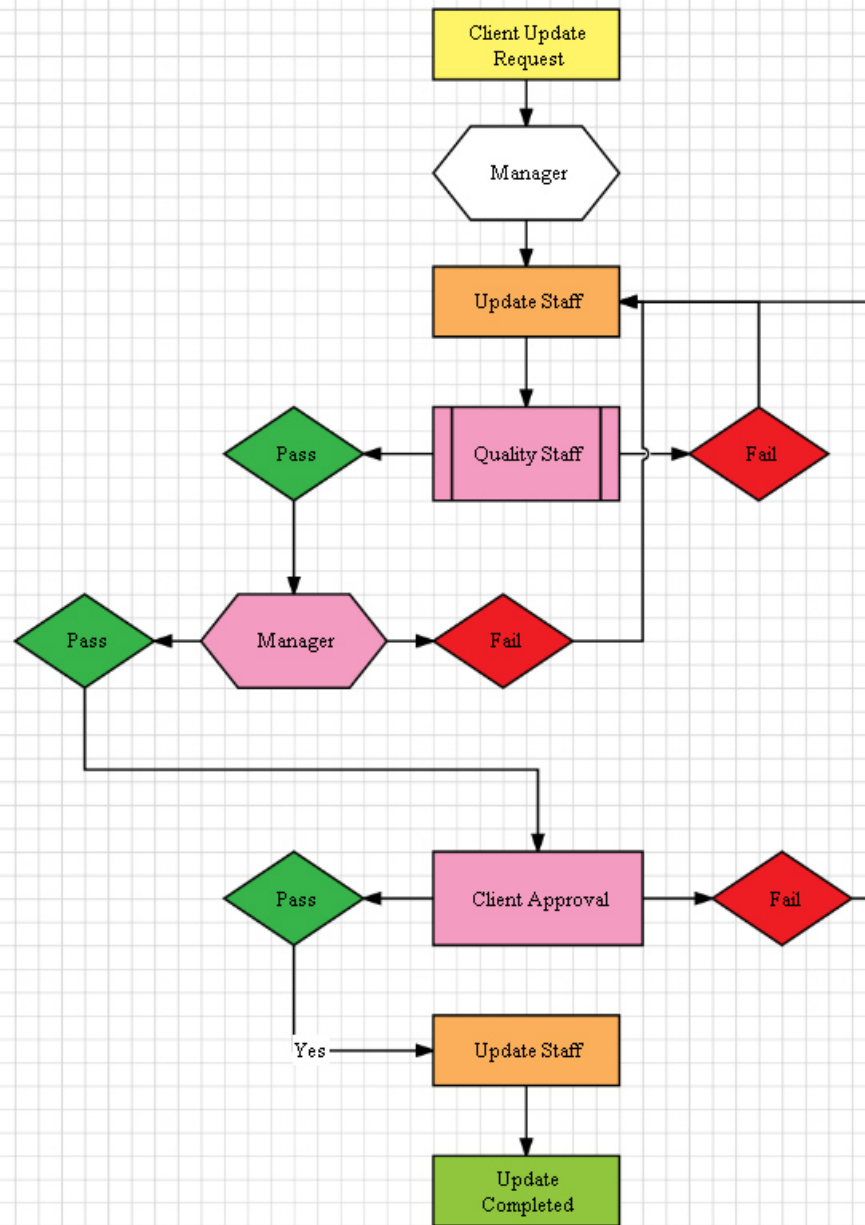
Composition of Chinook bycatch varies by latitude

At-Sea Pacific Whiting Mothership 2011-2014



A blue starburst shape with a white outline, centered on a red background. Inside the starburst, the word "Help!" is written in a white, cursive font.

Help!

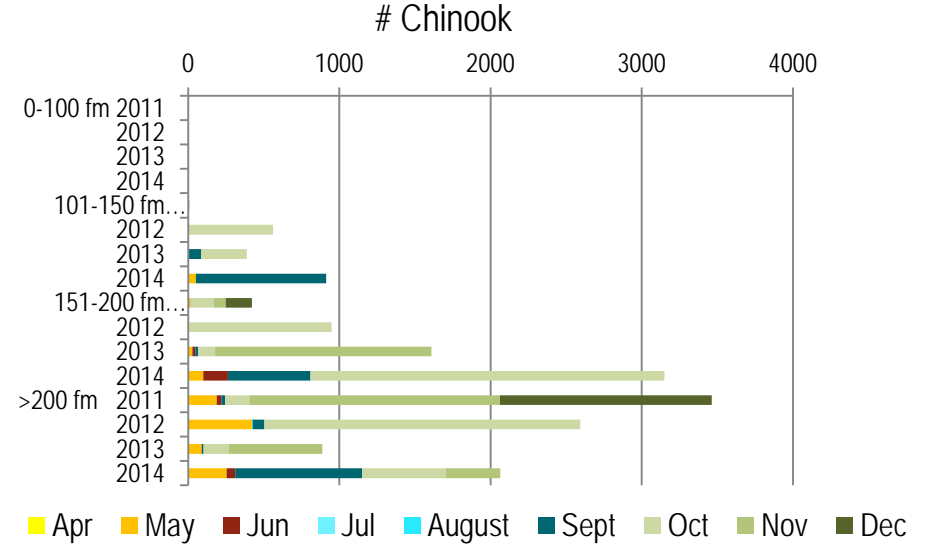
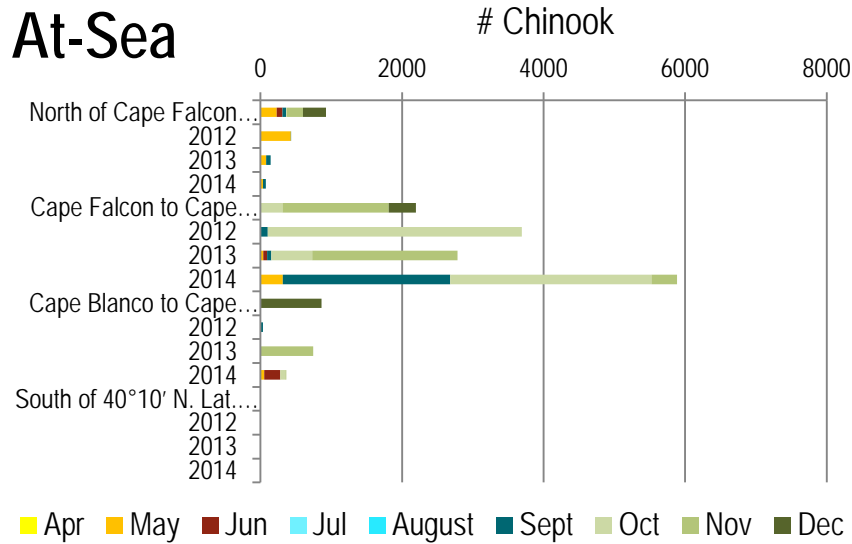


Please discuss:

- Preferred proposal
- Overall bycatch threshold and sector guidelines
- Rules for distribution from Reserve
- Measures to minimize salmon bycatch now and over time
- Work: who and how?

Chinook bycatch varies by location, depth and month

At-Sea



Shorebased

