

Pacific Bluefin Tuna Aerial Survey Southern California Bight, July 2015



Photo credit: NOAA



Pacific bluefin tuna school

California Department of Fish and Wildlife
California Wetfish Producers Association



Anna Holder
CDFW Environmental Scientist
Pacific Fishery Management Council
September 2015

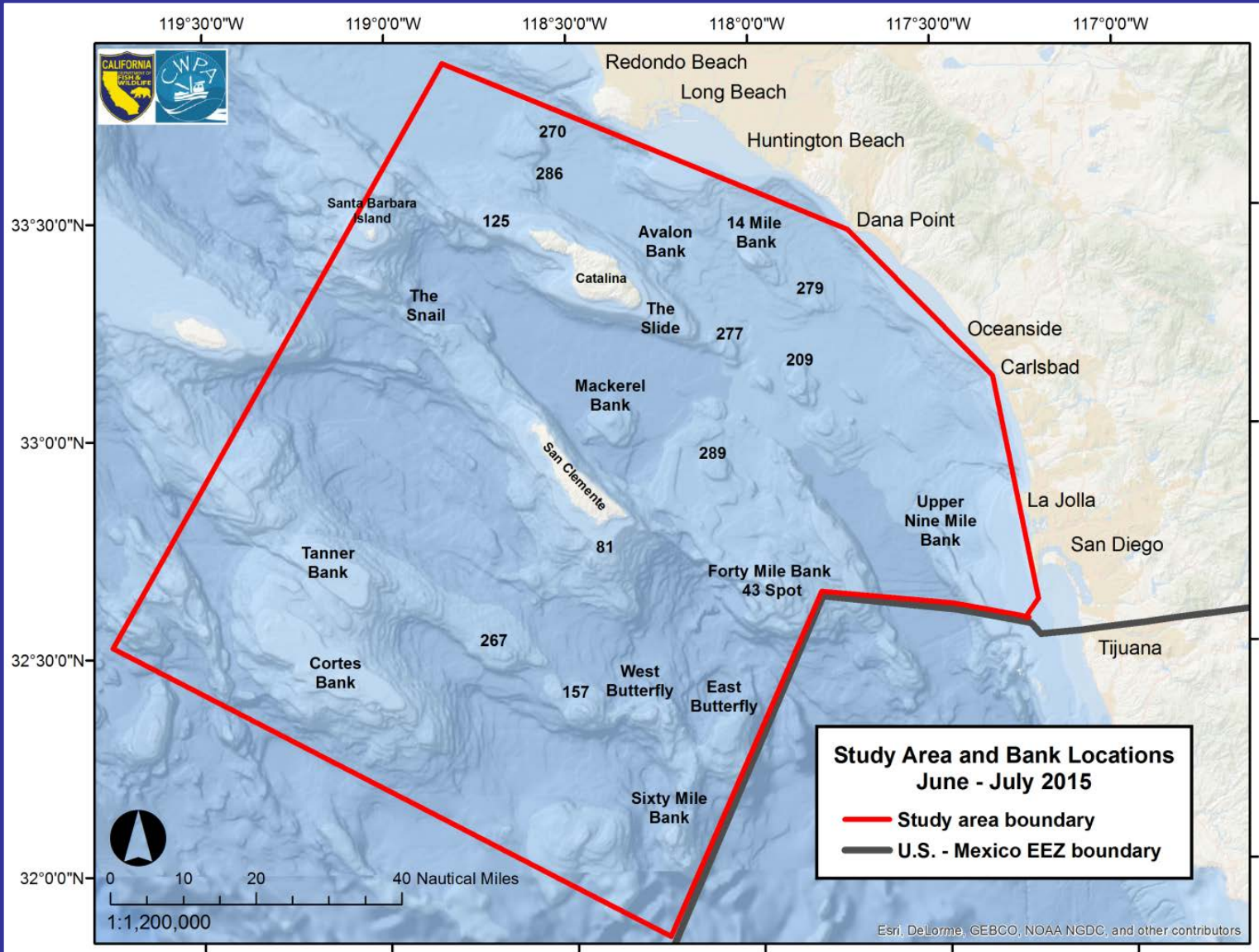


Survey Objective

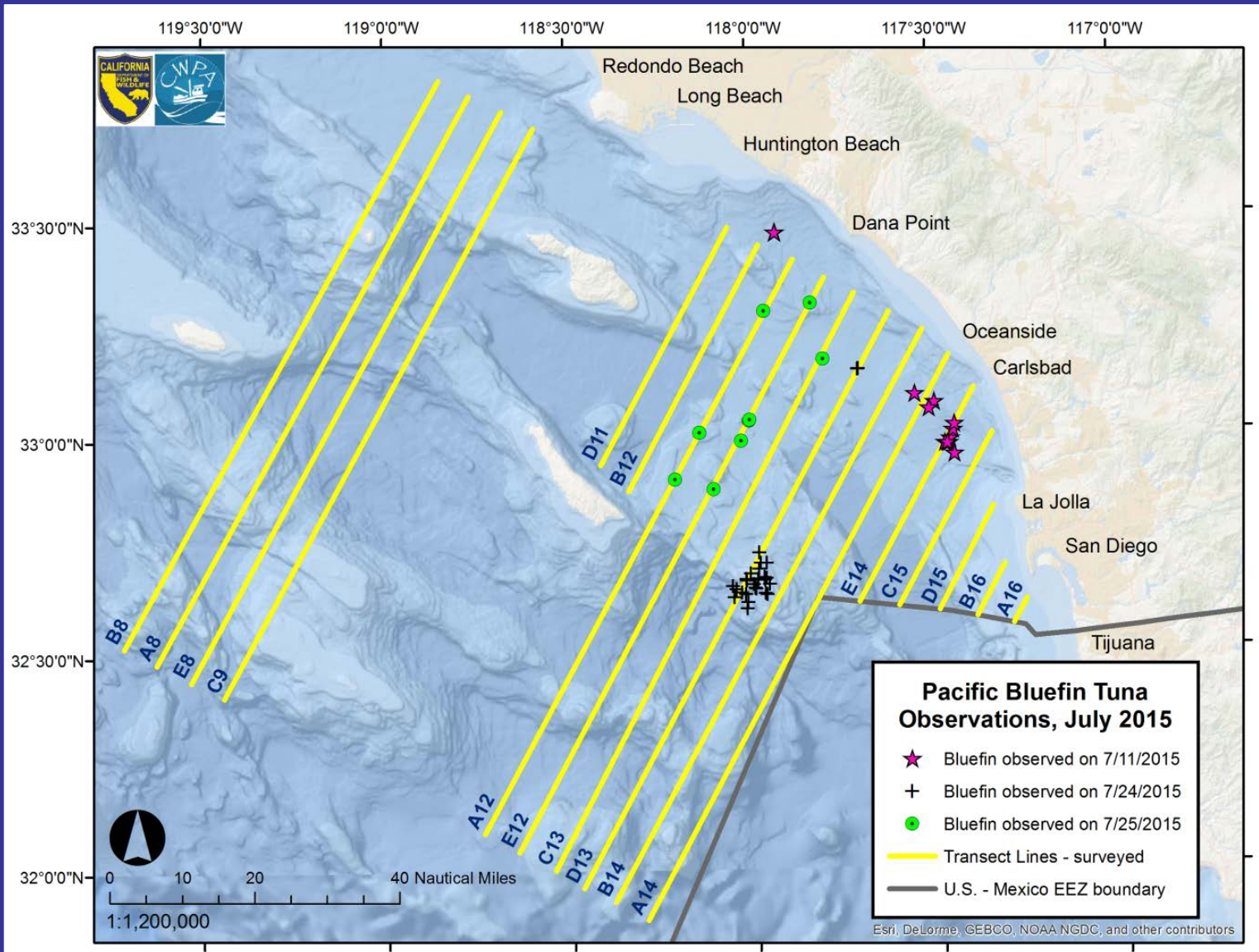
Collect data to document Pacific bluefin tuna abundance in the Southern California Bight that could be used to develop a potential index of abundance



Survey Area



July Observations

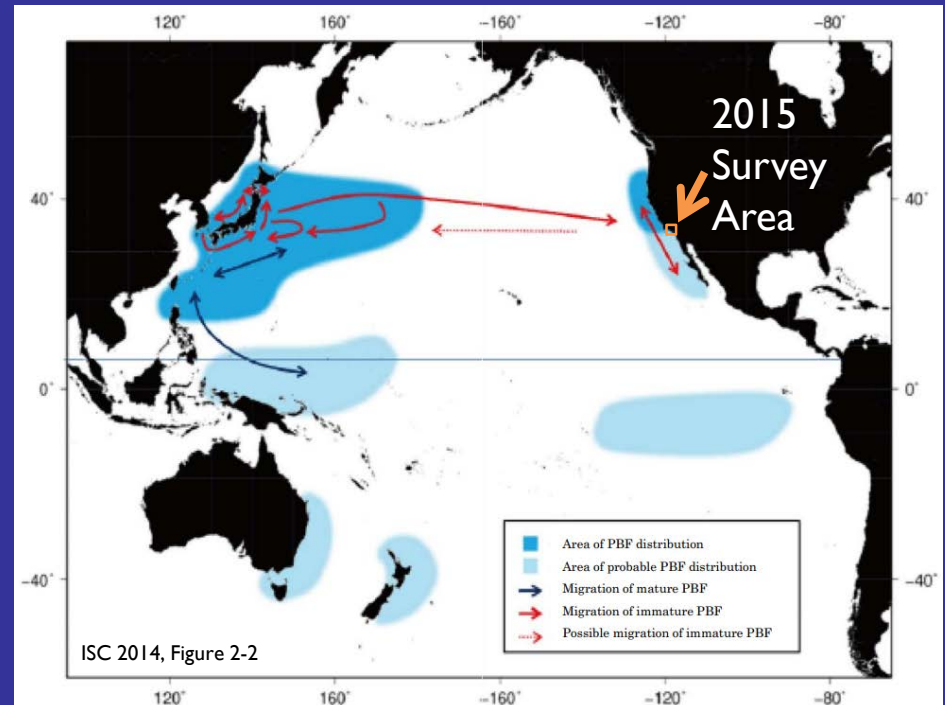


Summary

- Survey Conducted in Southern California Bight in July 2015
 - Systematic strip transects
 - 48 observations of 58 schools totaling 5,332 mt
- Biomass Observed
 - Survey Total: 5,332 mt
 - Daily Maximum: 3,132 mt

Application to Management

- 2014 Pacific bluefin tuna stock assessment
 - Range: Western and Eastern Pacific Oceans
 - Biomass estimate: 26,324 mt



- 2015 Pacific bluefin tuna CDFW/CWPA survey
 - Range: Southern California Bight
 - Biomass observed: 3,132 mt to 5,370 mt



Acknowledgements



Gary Schales – Pilot

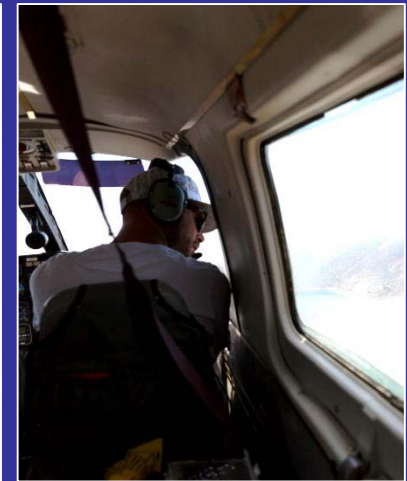
Devin Reed – Observer

Diane Pleschner-Steele – CWPA

CDFW Staff:

Kirk Lynn, Dianna Porzio, Alex Kesaris,

Michelle Horeczko, Trung Nguyen



Collaborative Fisheries Research - West Grant