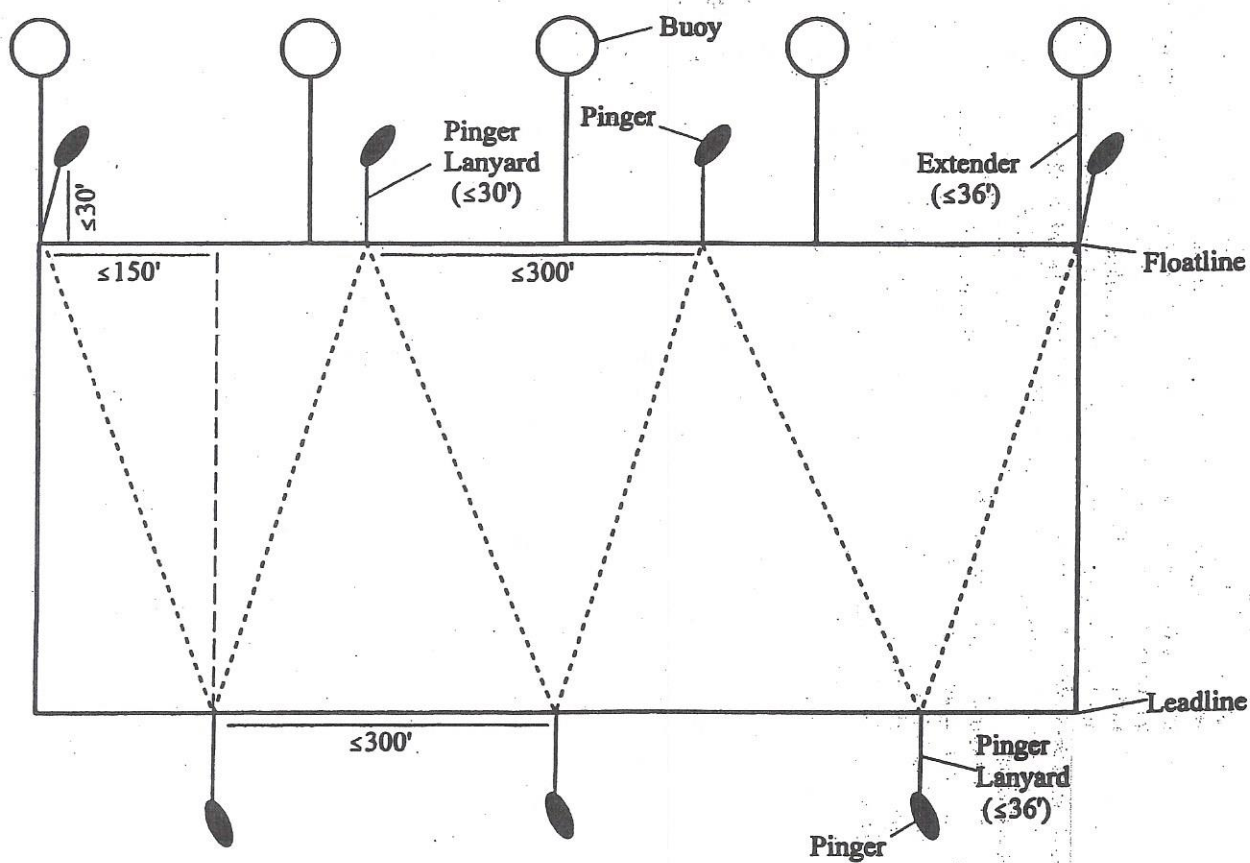


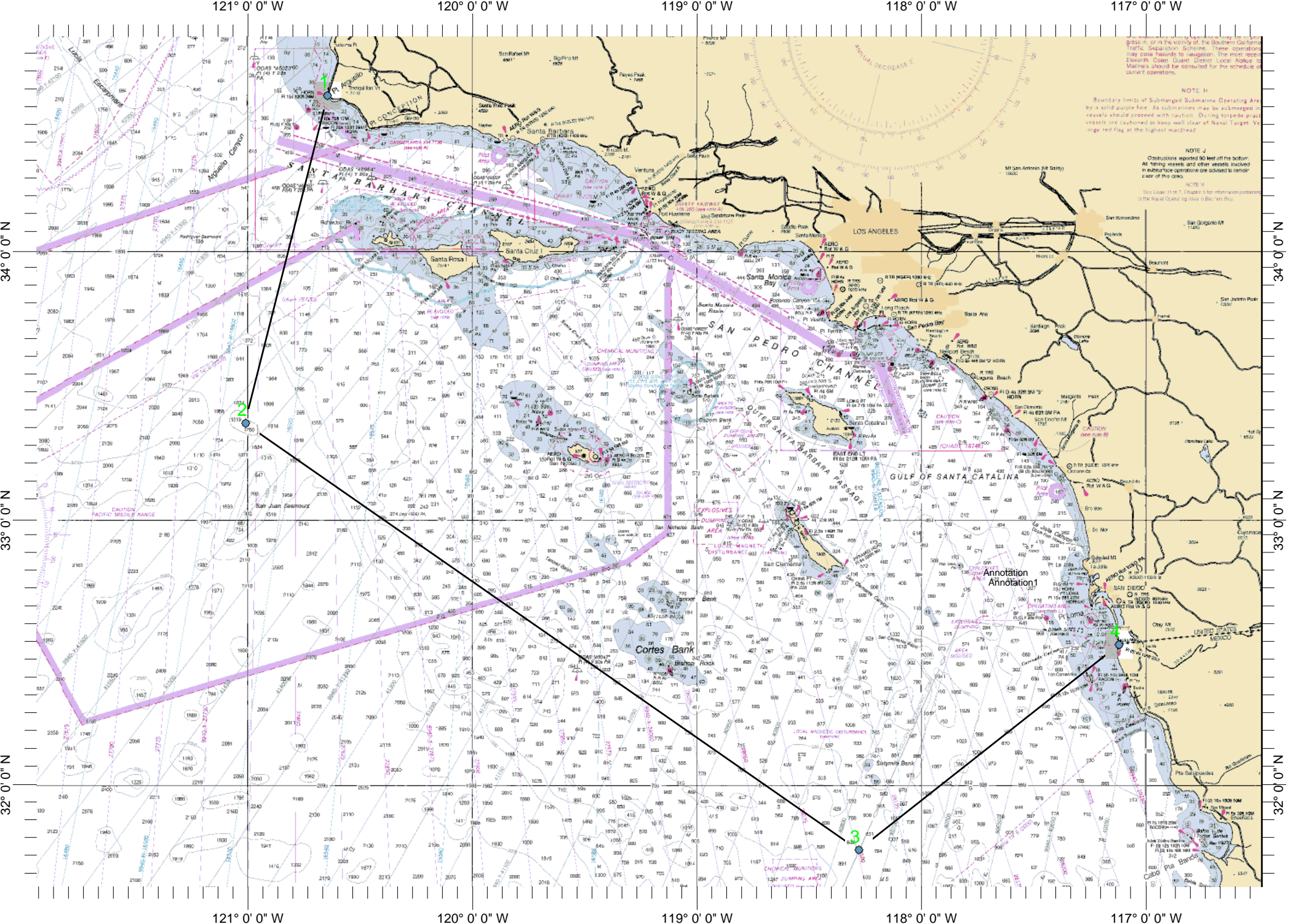
Excerpt from the *Reference Guide of Protected Species Regulations for the California / Oregon Drift Gillnet Fishery* (National Marine Fisheries Service, April 2005) with view of current gear requirements.

Agenda Item H.3.a
Supplemental Attachment 6
March 2015

- Drift gillnet vessels with multifilament gillnets (≥ 14 in. mesh) onboard, must carry enough pingers to meet the following configuration requirements:
 - ▶ Pingers must be attached every 300 ft. and within 30 ft. of the FLOATLINE
 - ▶ Pingers must be attached every 300 ft. and within 36 ft. of the LEADLINE
 - ▶ Pingers on or near the floatline and on or near the leadline must be staggered such that the horizontal distance between them is 150 ft.

Pinger Configuration Diagram





NOTE H
Boundary limits of Submerged Submarine Operating Area by a solid purple line. As submarines may be submerged in vessels should proceed with caution. During torpedo track vessels are cautioned to keep well clear of Naval Target Vectors (red flag) at the highest masthead.

NOTE J
Obstructions reported to lead off the bottom. All fishing assets and other vessels involved in a bottom trawl operation are advised to remain clear of the area.

NOTE K
See Note 1147, Chapter 5 for information pertaining to the Naval Clearing Area in this area.

Annotation 1

Chart Name: SAN DIEGO TO SAN FRANCISCO BAY
 Chart ID: 18022_1
 Top Left: 34° 47' 42" N 121° 56' 35" W
 Bottom Right: 31° 36' 50" N 116° 28' 54" W