

International Pacific Halibut Commission

91st Annual Meeting Vancouver, B.C.

January 26-30, 2015

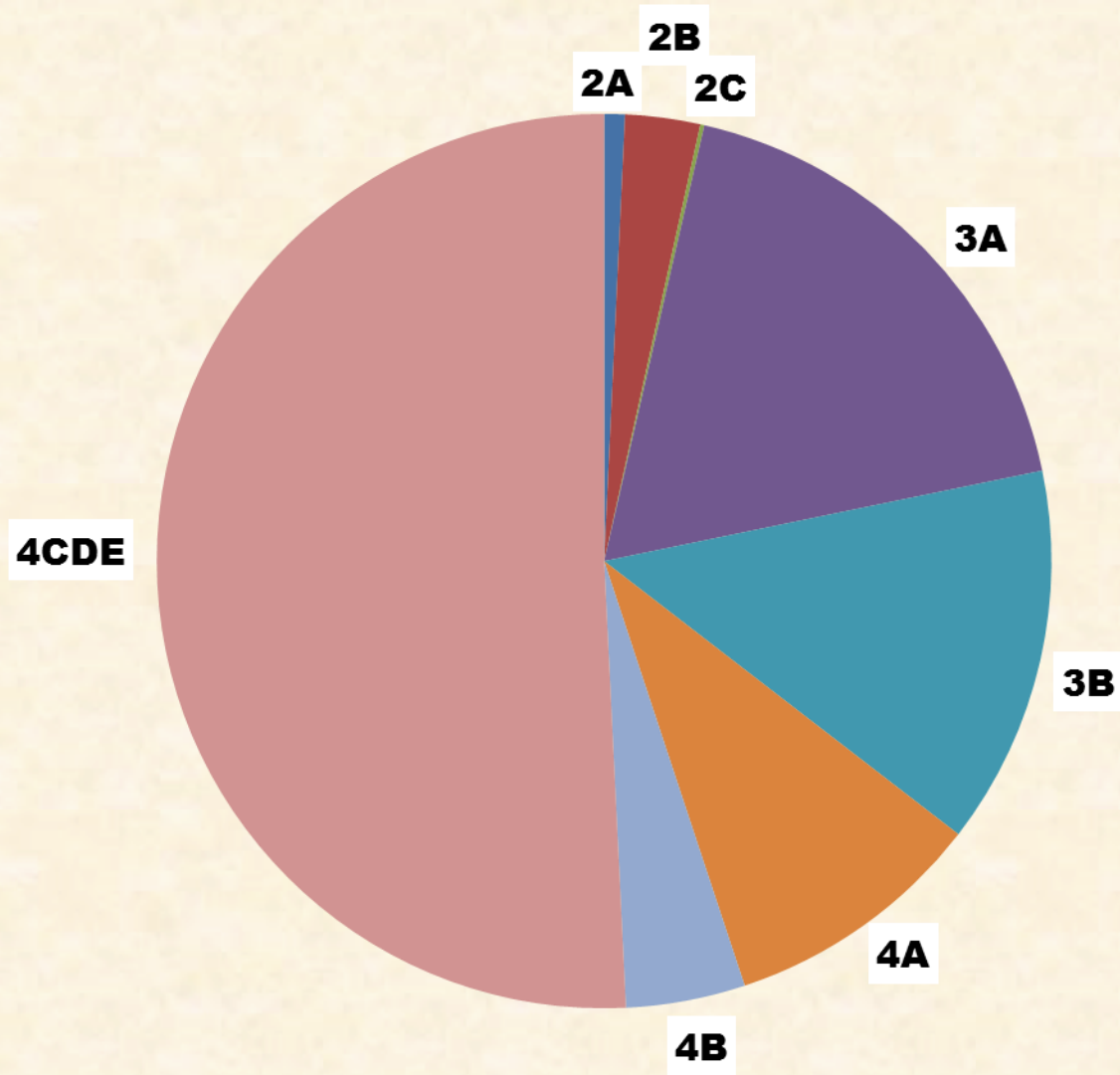
Recent removals (M lb)

Year	Landings	Wastage	Sport	Pers./ Sub.	Bycatch	Total
2010	49.72	3.21	7.85	1.24	10.30	72.36
2011	39.51	2.46	7.10	1.14	9.42	59.64
2012	31.99	1.67	6.77	1.14	10.10	51.67
2013	29.04	1.43	7.59	1.14	8.84	48.04
2014	23.69	1.29	7.08	1.14	9.00	42.51

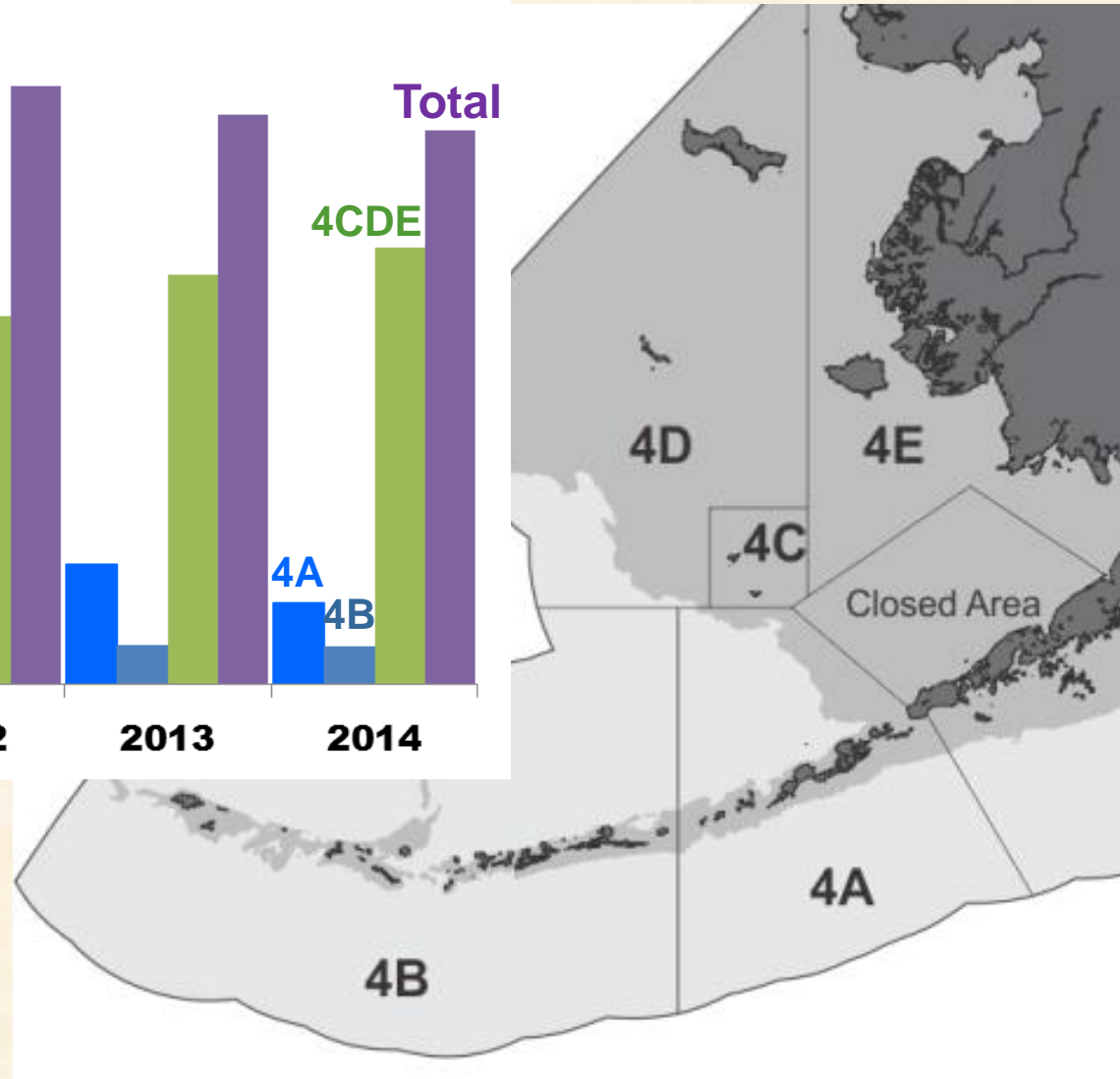
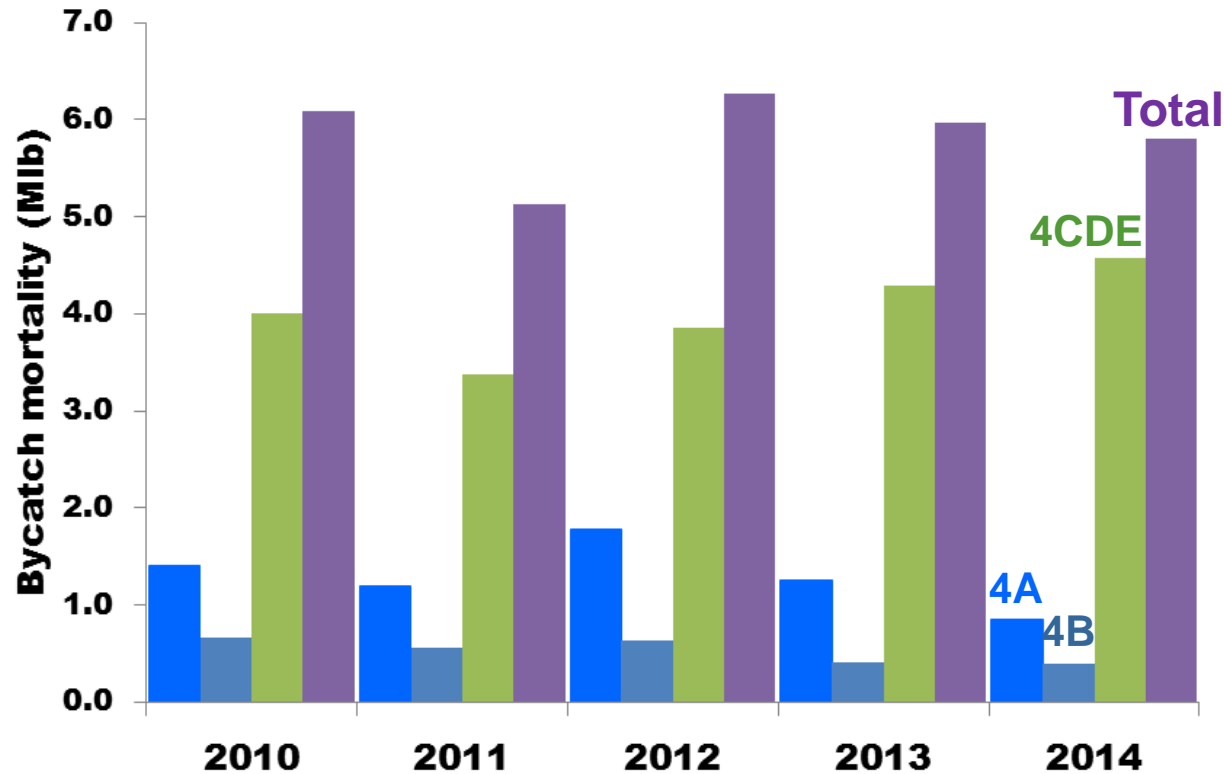
5-yr change: **-52%** **-60%** **-10%** **-8%** **-13%** **-41%**



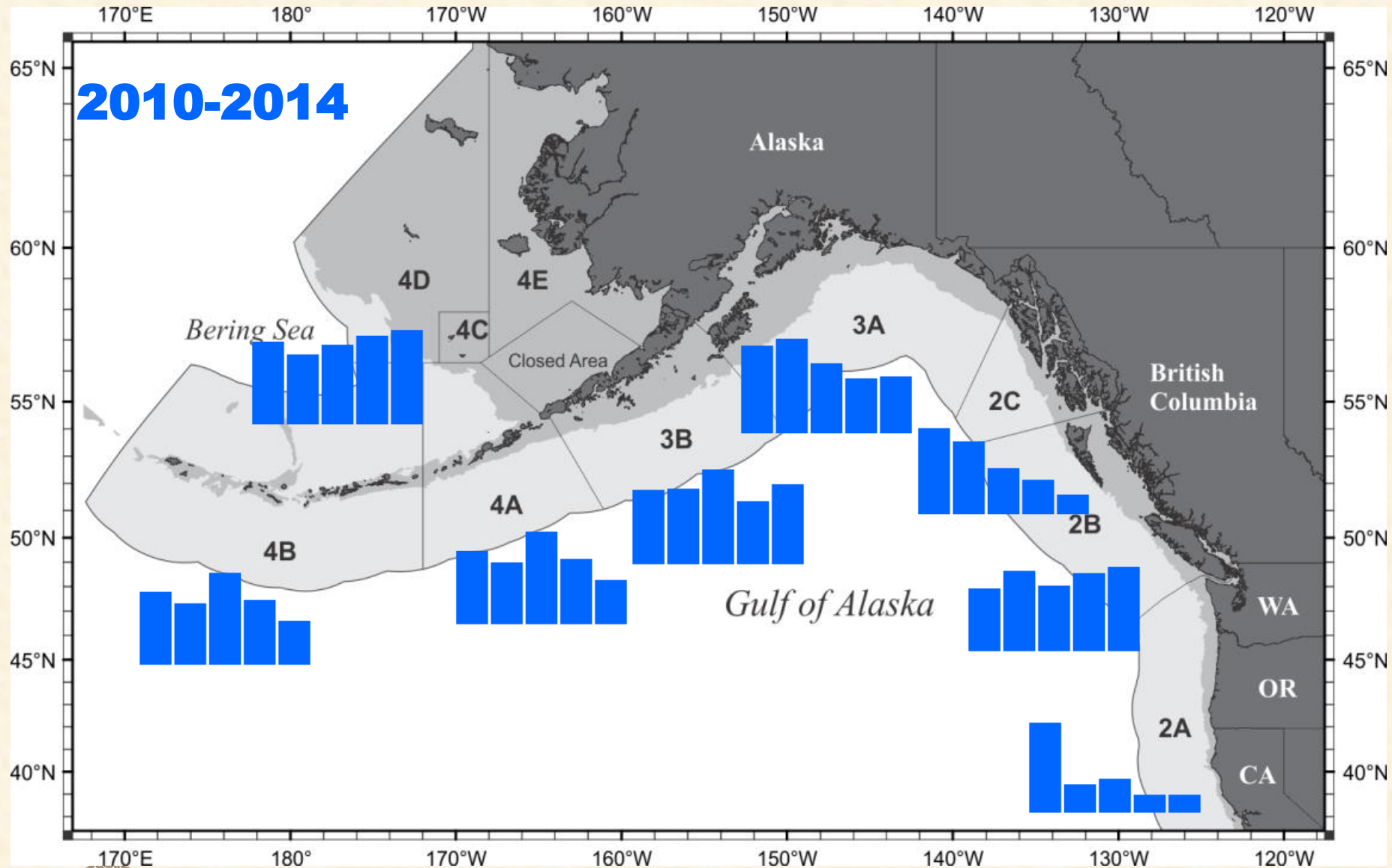
Updated 2014 Bycatch estimate: 9.0 Mlb (-3%)



Updated bycatch estimates: Area 4



Updated bycatch trends

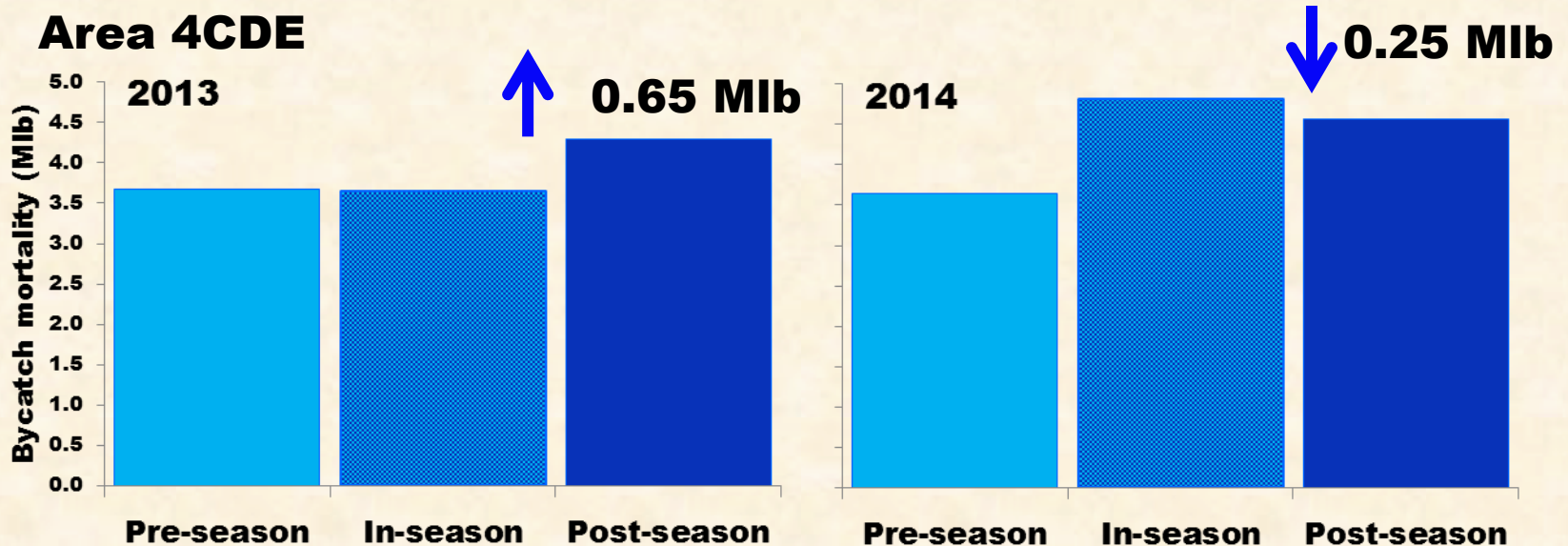


Projections and estimates

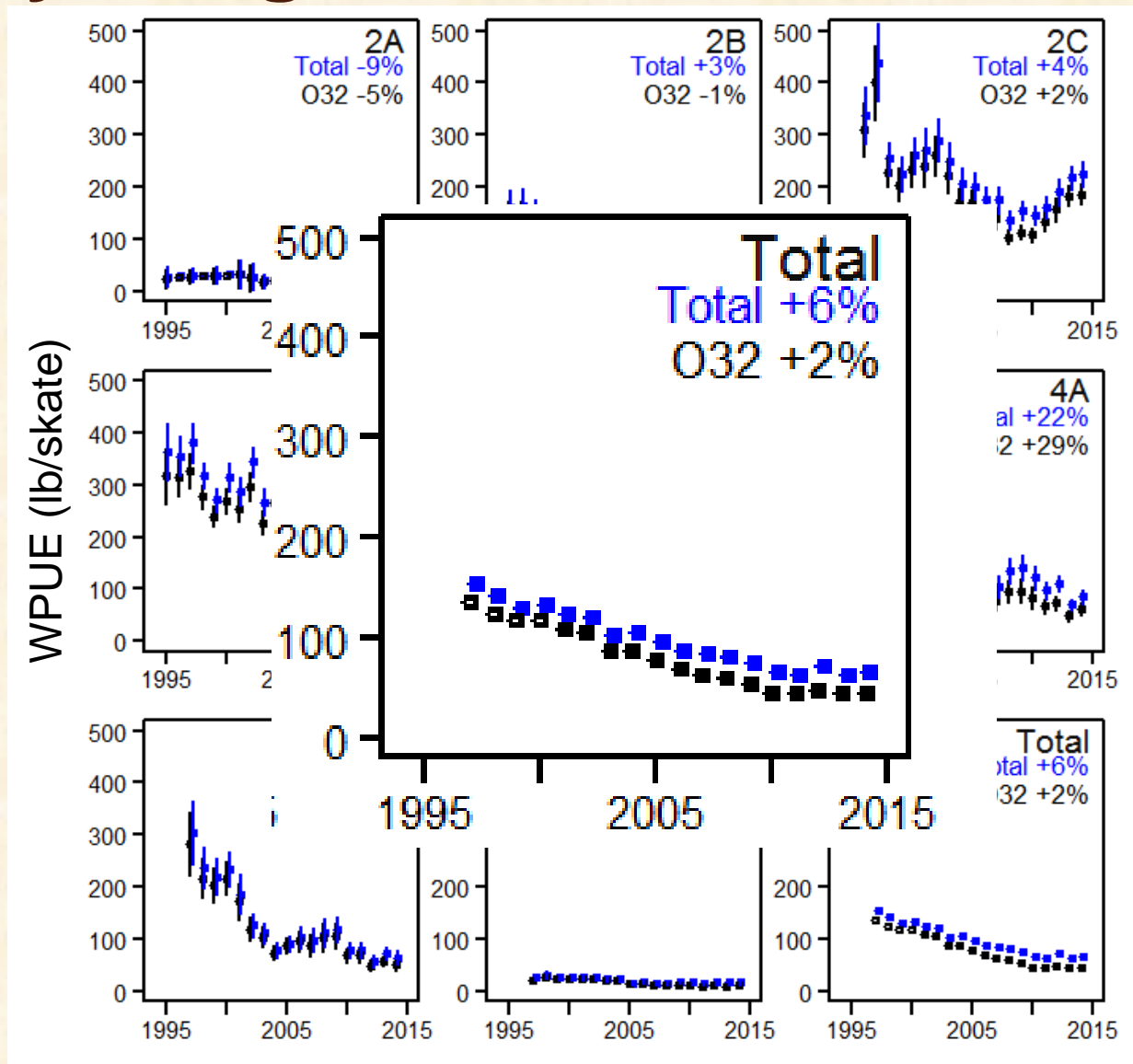
Pre-season: Previous year's In-season

In-season: Data available through October

Post-season: Data available after the year is over

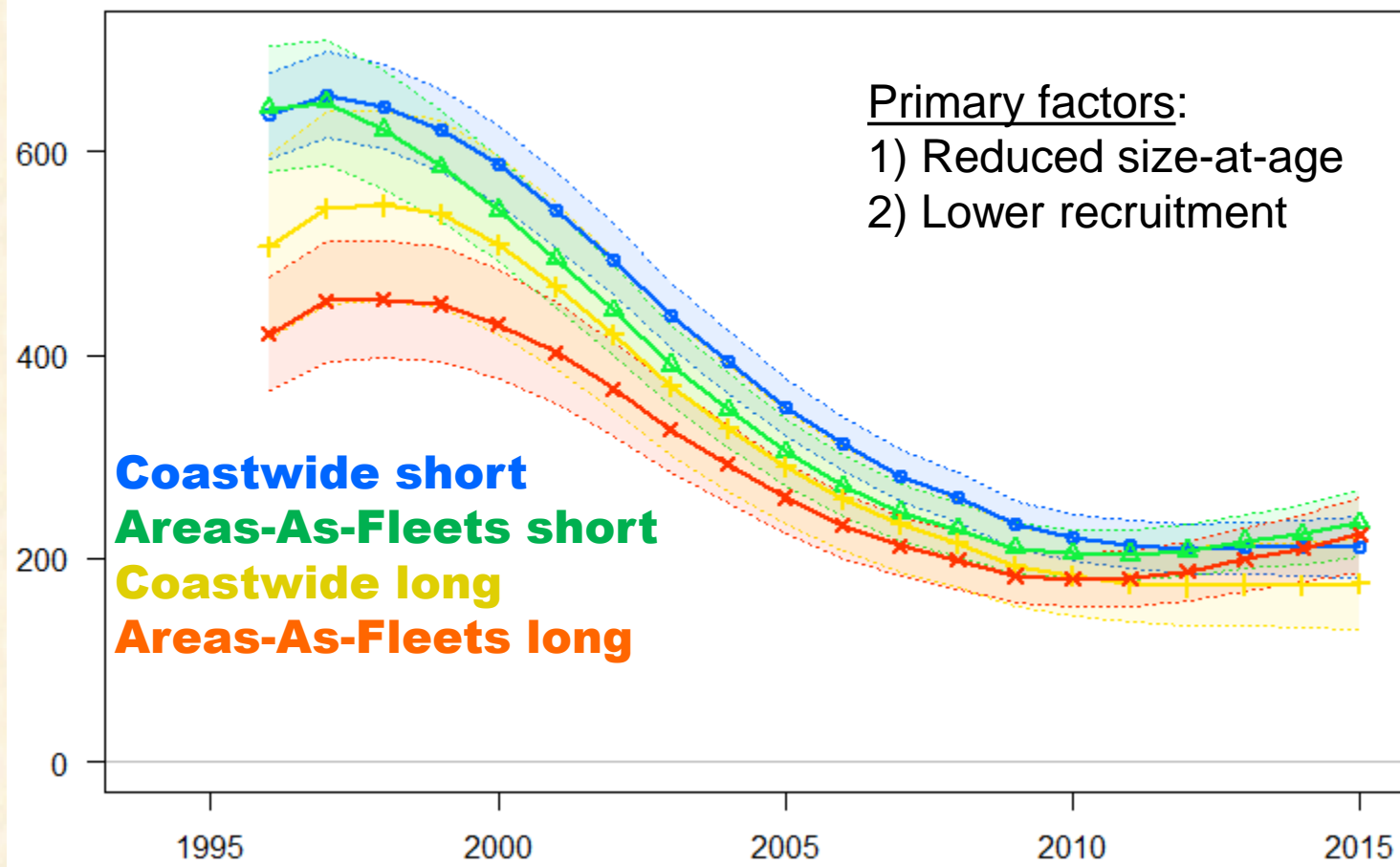


Survey Weight-Per-Unit-Effort

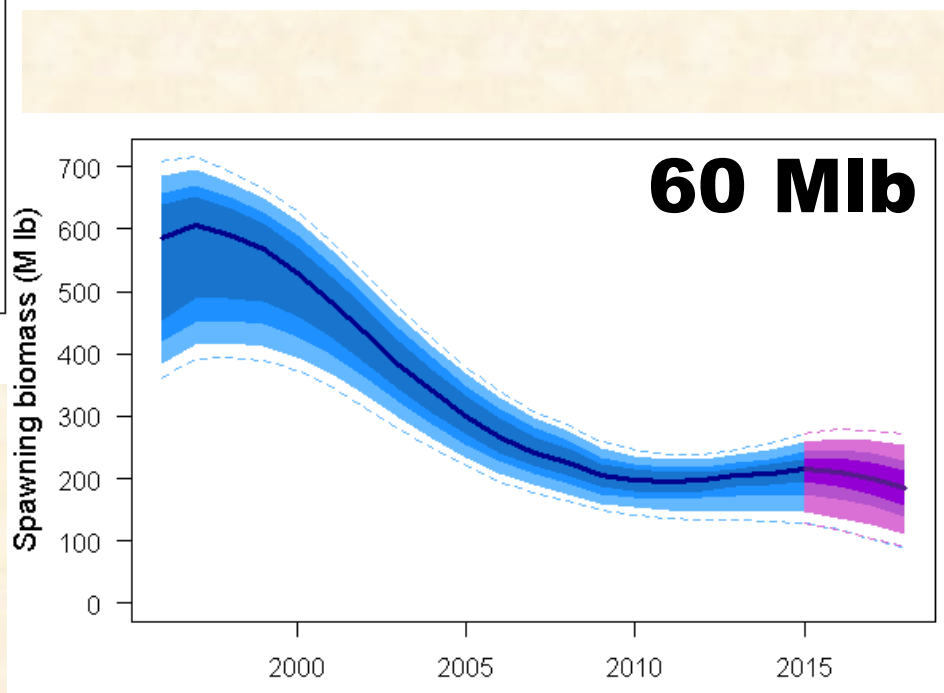
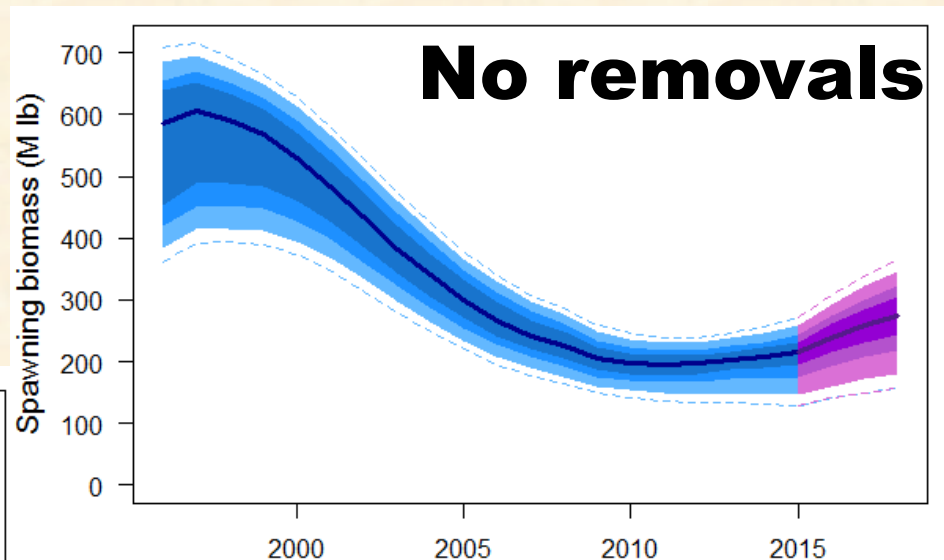
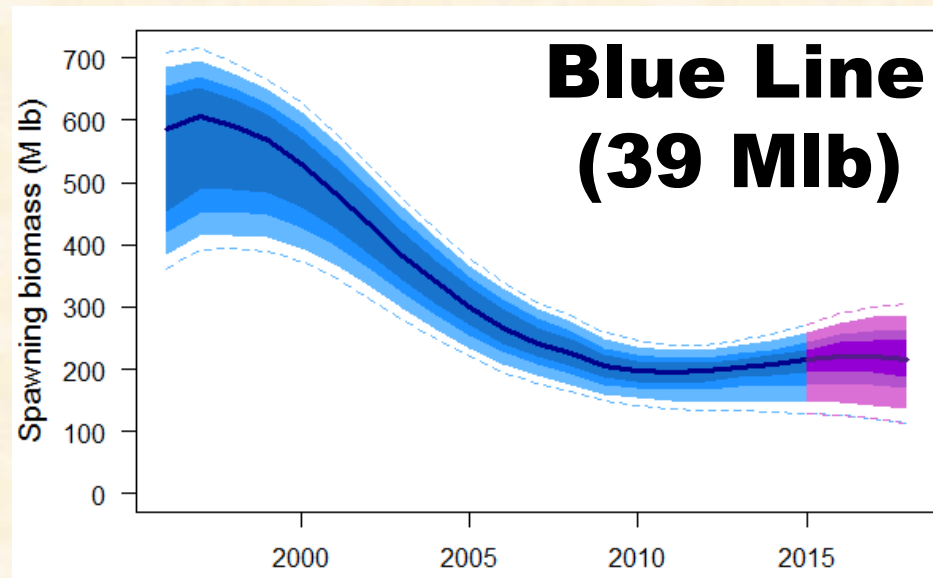


Four assessment models

Spawning biomass (M lb)



Projections



Decision table: Stock trend

				Stock Trend			
				Spawning biomass			
				in 2016		in 2018	
2015 Alternative	Total removals (M lb)	Fishery CEY (M lb)	Fishing intensity	is less than 2015	is 5% less than 2015	is less than 2015	is 5% less than 2015
No removals	0.0	0.0	$F_{100\%}$	<1/100	<1/100	<1/100	<1/100
FCEY = 0	13.1	0.0	$F_{73\%}$	<1/100	<1/100	<1/100	<1/100
	20.0	7.7	$F_{64\%}$	<1/100	<1/100	1/100	<1/100
	30.0	16.5	$F_{54\%}$	3/100	<1/100	17/100	4/100
Blue Line	38.7	25.0	$F_{46\%}$	19/100	<1/100	40/100	23/100
	41.4	27.5	$F_{45\%}$	26/100	1/100	47/100	30/100
Final adopted	42.8	29.2	$F_{44\%}$	30/100	1/100	54/100	34/100
Maintain 2014 SPR	43.3	29.5	$F_{43\%}$	31/100	1/100	56/100	36/100
	50.0	36.0	$F_{39\%}$	44/100	5/100	75/100	51/100
	60.0	45.8	$F_{34\%}$	65/100	22/100	96/100	82/100
				a	b	c	d

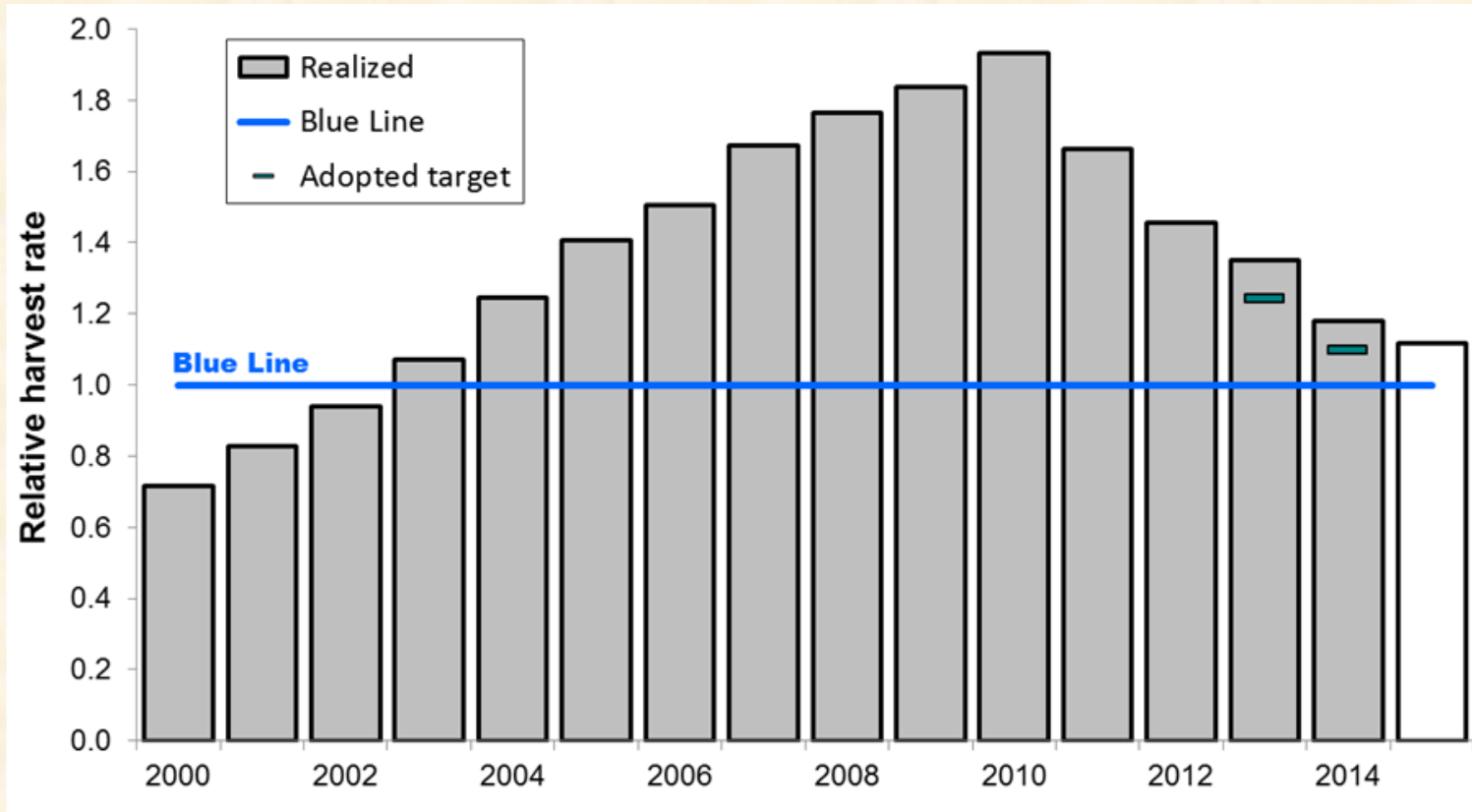


FCEY comparison

	<u>2A</u>	<u>2B</u>	<u>2C</u>	<u>3A</u>	<u>3B</u>	<u>4A</u>	<u>4B</u>	<u>4CDE</u>	<u>Total</u>
2014 Blue Line	0.72	4.98	4.16	9.43	2.84	0.85	0.82	0.64	24.45
2014 Adopted	0.96	6.85	4.16	9.43	2.84	0.85	1.14	1.29	27.52
2015 Blue Line	0.75	4.96	4.30	10.10	2.46	1.39	0.73	0.52	25.22
2015 Adopted	0.97	7.04	4.65	10.10	2.65	1.39	1.14	1.29	29.22



Realized harvest rates



Summary

- Coastwide stock trends are relatively stable
 - Very different trends among areas
- 2015 Adopted catch limits are projected to result in a slightly lower level of fishing intensity than was realized in 2014.



2015 Catch Limit Advice and Decisions

(Million pounds, net wt.)

Regulatory Area	2014 Catch Limit	Blue Line	Conference Board	Processors Advisory Group	IPHC Approved
2A ¹	0.960	0.75	0.960	0.960	0.970
2B ¹	6.850	4.96	7.038	7.038	7.038
2C ²	4.160	4.30	5.000	5.300	4.650
3A ²	9.430	10.10	10.100	10.100	10.100
3B	2.840	2.46	2.650	2.460	2.650
4A	0.850	1.39	1.390	1.390	1.390
4B	1.140	0.73	1.140	1.140	1.140
4CDE ³	1.285	0.52	1.285	1.285	1.285
4C ⁴	0.597	0.241	0.5966	0.5966	0.597
4D ⁴	0.597	0.241	0.5966	0.5966	0.597
4E ⁴	0.092	0.037	0.0917	0.0917	0.092
Total	27.515	25.210	29.563	29.673	29.223

¹ Combined sport and commercial allocation (2A includes tribal)

² Includes commercial and recreational charter Catch Sharing Plan

³ Allocation for combined Areas 4C, 4D, 4E

⁴ NPFMC Plan: 4C , 4D: 46.43% of 80K less than 4CDE quota, 4E: 7.14% + 80K

80K implemented if at or above 1.675



Adopted Regulations

Fishing periods and catch sharing

- Commission adopted **March 14 - November 7** for quota share fisheries
- **Area 2A** commercial and treaty Indian fisheries also fall within **March 14 – November 7** period
- In **Area 2A**, a series of 10-h periods for the directed fishery starting June 24, at two-week intervals
- Adopted Management Councils' catch sharing plans for **Areas 2A, 2C, 3A, and 4CDE**
- Endorsed DFO commercial:sport allocation plan for **Area 2B**



Adopted Regulations

Areas 2C and 3A Charter Management Measures

- **For Area 2C:** One-fish daily limit of size ≤ 42 in. or ≥ 80 in., head-on.
- **For Area 3A:** Two-fish daily limit with one fish ≤ 29 in.; and an annual limit of five fish. Each vessel restricted to one trip per calendar day. Chartering fishing prohibited on Thursdays from June 15 – August 31.



Adopted Regulations

Areas 2C and 3A Charter Fishing Regulations

- Guided sport fishing definition changed so that the guide does not need to be onboard a vessel. Guided sport fishing is with assistance from a compensated guide; regulation is now coherent with NMFS and ADF&G regulations.



Adopted Regulations

Areas 2C and 3A Charter Fishing Regulations

- NMFS regulations will require that the carcass of a fish that is filleted on board the vessel must be retained on board until all the fillets are offloaded. IPHC regulations therefore do not need to retain this stipulation.
- Clarify that charter vessel guide is responsible for angler actions, whether on the same vessel or not.
- All retained halibut required to be retained on the vessel on which they were caught until the end of the chartered fishing trip.



Adopted Regulations

Authorized officer definition

- California Fish and Wildlife officers have been added as authorized officers to enforce IPHC regulations



IPHC Survey Expansion in Area 2A

- Since 1998, IPHC survey stations have been located on a 10 nmi grid within the depth range of 20-275 fathoms (with a few exceptions)
- Some areas have significant gaps within this depth range
- Halibut occur at shallower depths, and down to at least 400 fathoms in some areas
 - Commercial fishing takes a significant fraction of catch at depths greater than 275 fathoms in Area 4
 - Several areas have high proportions of commercial catch at shallow depths
 - This is true during the period of the survey
- Five year plan to cover all IPHC regulatory areas with 2A and 4A conducted in 2014 (repeat of 2011 2A pilot work).



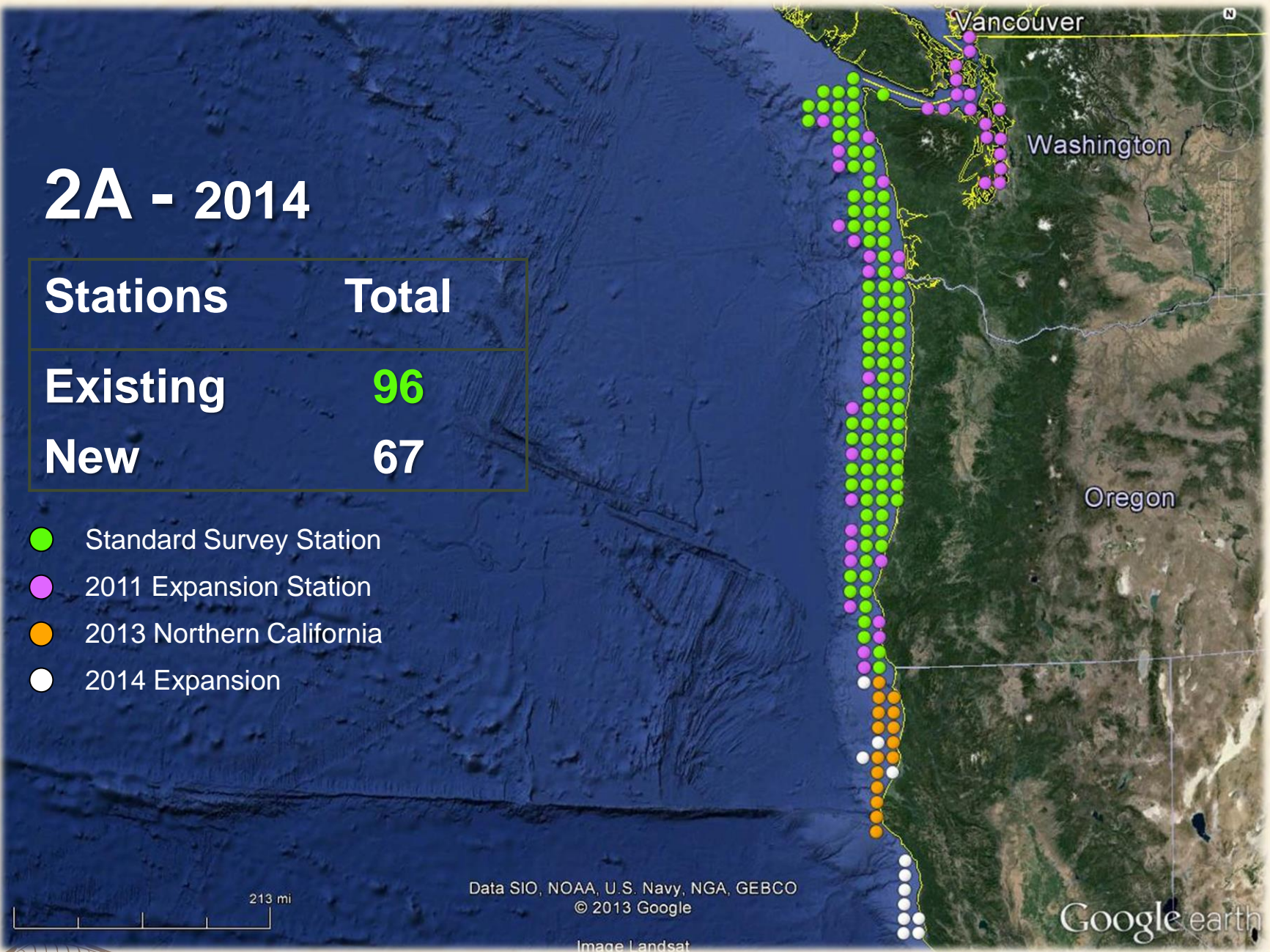
2A - 2014

Stations	Total
----------	-------

Existing	96
----------	----

New	67
-----	----

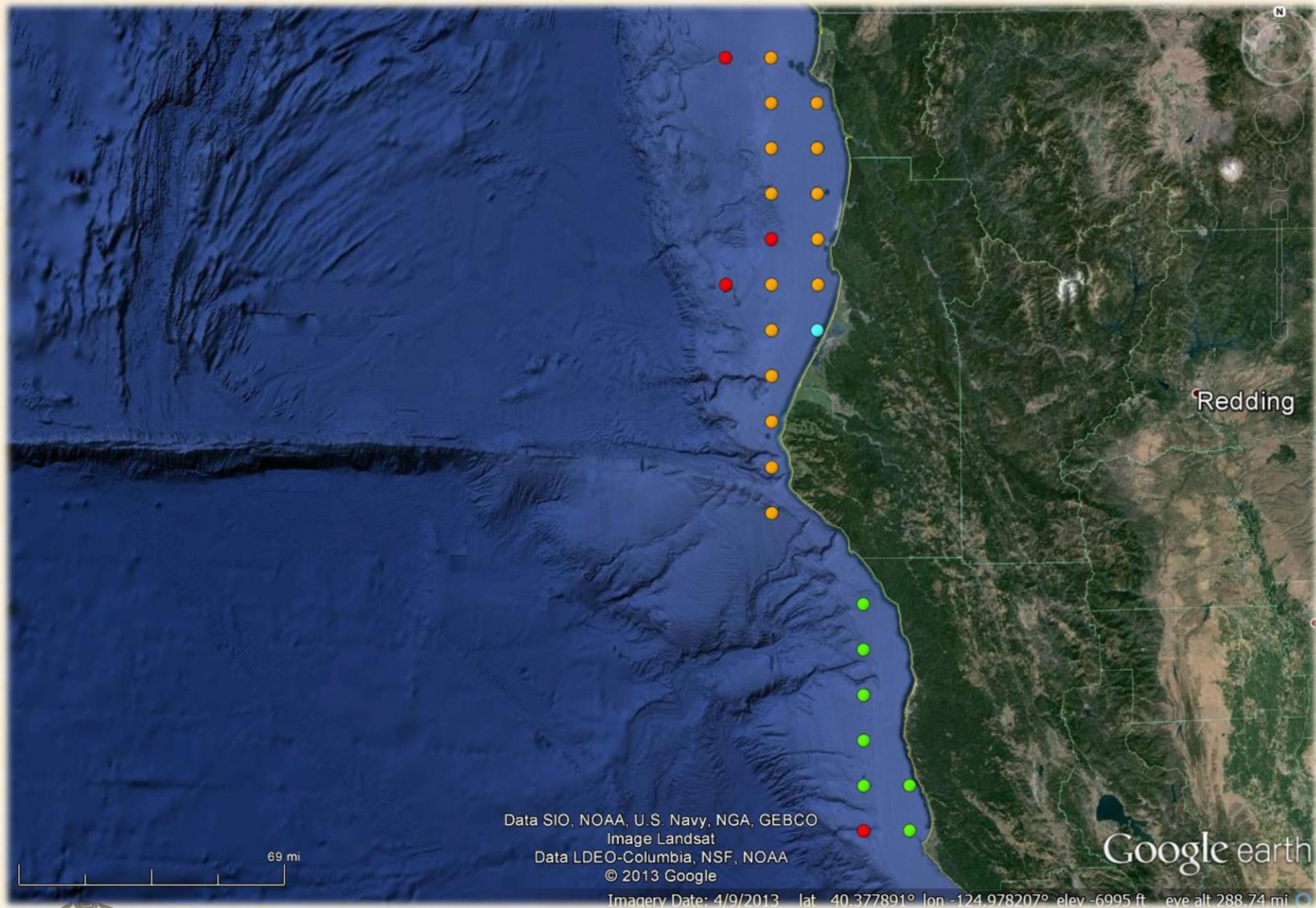
- Standard Survey Station
- 2011 Expansion Station
- 2013 Northern California
- 2014 Expansion



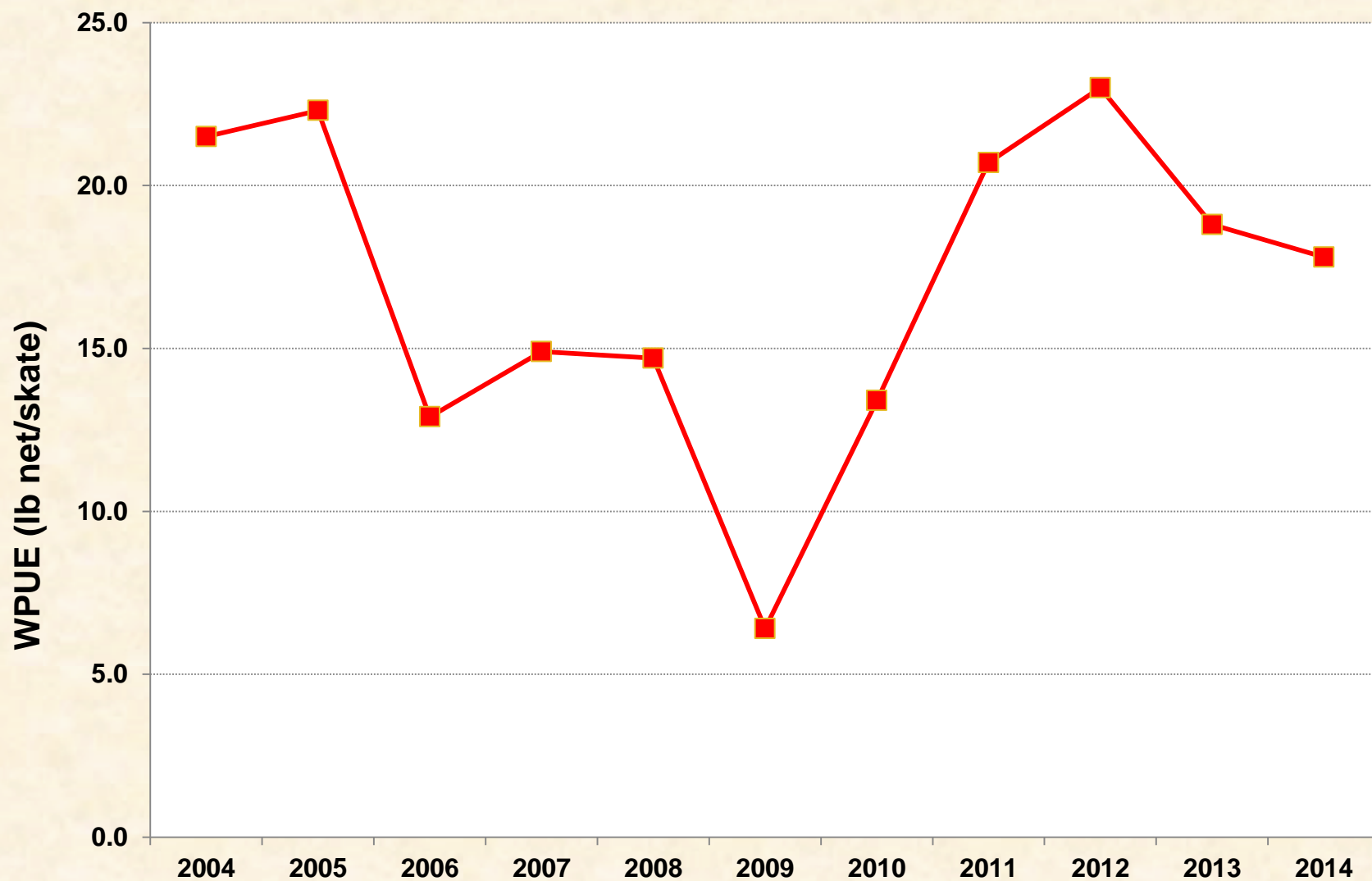
Northern California Expansion-2014

- In addition to the 15 standard (20-275 fm) depth band from 2013, add 1 shallow station (10-20 fm) and 3 deep stations (275-400 fm) in the 42°N to 40°N area
- Additionally extended further south to 39°N.
 - 7 stations in the standard depth band, and 1 station in the deep depth band.
 - This represented an additional 5% areal increase to 2A as a whole.





Area 2A Sub-area WPUE 2004-2014 (all stations)



Bycatch Mortality in the Bering Sea

- The Commission received presentations from five Alaska groundfish harvesting organizations. Two organizations provided testimony identifying specific reductions that they believe could be achieved from their fleets, although recognizing that achieving them would be difficult.
- Part of these reductions would be achieved through an EFP, currently being reviewed by NMFS, permitting deck sorting.
- IPHC also received a letter from NMFS Assistant Administrator Eileen Sobeck, urging approval of higher catch limits in Area 4CDE, and indicating a commitment to reduce BSAI bycatch mortality.



Directions to Staff

- The Commission reviewed a staff paper on changing the minimum size limit (MSL) in the commercial fishery. Noting considerable uncertainty surrounding the potential results of lowering the MSL, the Commission directed the staff to continue its investigation of this issue within the Management Strategy Evaluation.



Future Meetings

- **2015 IPHC Interim Meeting:** Seattle WA
December 1-2, 2015
- **2016 IPHC Annual Meeting:** Juneau
AK January 25-29, 2016
- **2017 Annual Meeting:** Victoria BC
January 23-27, 2017



Questions?

