

Electronic Monitoring Workshop

Pacific Fishery Management Council

Portland, OR

February 27, 2013

Pacific States Marine Fisheries Commission

Dave Colpo

PSMFC Project – 2013 study design

- 2013 vessels (expected):
 - Groundfish trawlers
 - Verbal agreement on up to 12 vessels
 - Expectation of discards of halibut, salmon, large fish (sharks) and logs/crab pots,etc.
 - Expectation of retention of all other catch
 - No directed whiting vessels expected in 2013
 - Some groundfish trawlers expected to participate in whiting
 - Fixed gear vessels: 12 vessels
 - Mix of pot boats and pot/line boats
 - 4 of 5 CA vessels are expected to return
 - Add OR/WA fixed gear vessels

PSMFC Project – 2013 study design

- Cameras
 - AMR expected to provide cameras for all groundfish trawlers and CA fixed gear vessels
 - AMR expected to provide cameras/support some OR/WA fixed gear vessels
 - Expectation is all AMR video will be reviewed by PSMFC staff with AMR providing backstop support as needed
 - Sub-contract negotiations are ongoing at this time
 - Saltwater Inc. expected to provide cameras/field support for up to 4 OR fixed gear vessels (Newport/Astoria)
 - Limited video software review options at this point
 - Sub-contract negotiations are ongoing at this time
 - Expectation is all Saltwater video will be reviewed by PSMFC staff

Rare Events Simulation Study

Jennifer Cahalan, PSMFC

- Used 2011 observer data
 - Shoreside non-hake IFQ trips
 - Bottom trawl, Hook and line, Pot
 - Observer data is assumed complete
- Focused on 6 rebuilding rockfish species
- Simulation study
 - 10%, 25%, 50% minimum sampling rates
 - All Trips are sampled
 - 1,000 random samples

	Number of Trips	Number of Hauls	Mean Hauls per Trip (range)	Actual Sample Rates for Nominal		
				10% sample	25% sample	50% sample
Northern Area						
Bottom Trawl	856	7,225	8.4 (1 to 28)	19.1	31.8	54.6
Hook and Line	21	402	19.1 (1 to 38)	24.5	36.5	55.3
Pot	79	774	10.0 (1 to 23)	18.25	31.5	54.0
Southern Area						
Bottom Trawl	296	1,555	5.2 (1 to 15)	26.7	35.7	56.3
Hook and Line	71	211	3.0 (1 to 20)	47.3	48.0	57.4
Pot	148	736	5.0 (1 to 30)	50	55.3	67.2
TOTAL	1,471	10,903				

2011 Observer Data

	Trips	Hauls
TOTAL	1,471	10,903

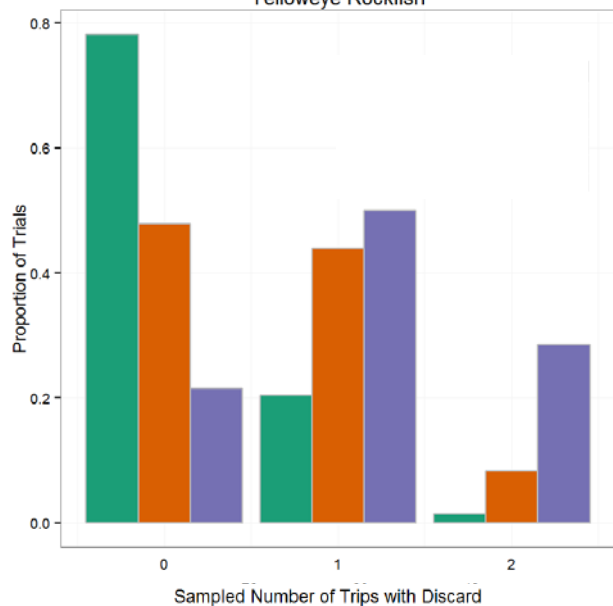
Discard Events

	Trips	Hauls	Number of Fish	Pounds
Yelloweye Rockfish	2	2	2	12
Canary Rockfish	15	31	189	304
Darkblotched Rockfish	172	425	5,096	3,567
Bocaccio	5	6	16	19
Cowcod	4	5	17	7
Pacific Ocean Perch	57	93	284	779

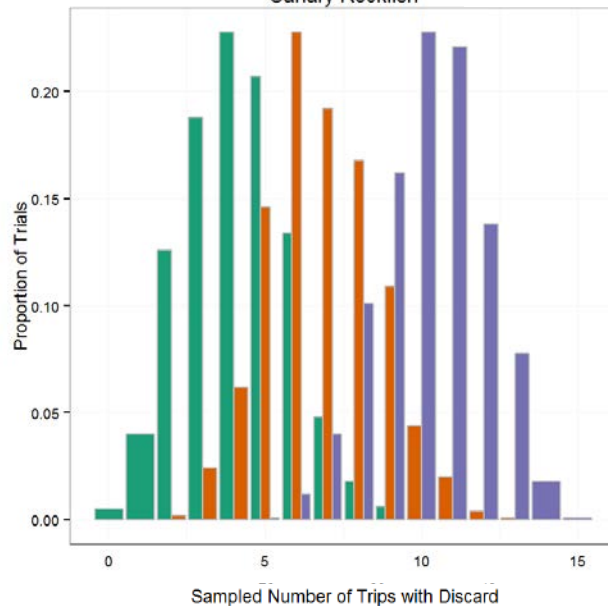
Sample Rate



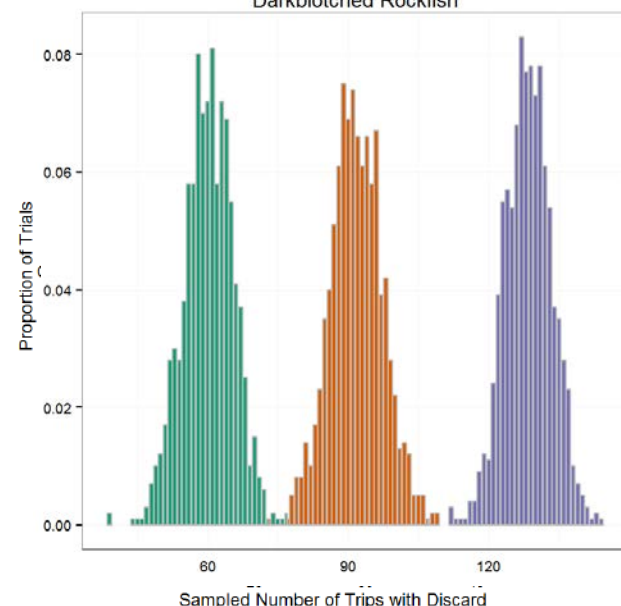
Yelloweye Rockfish 2 Trips



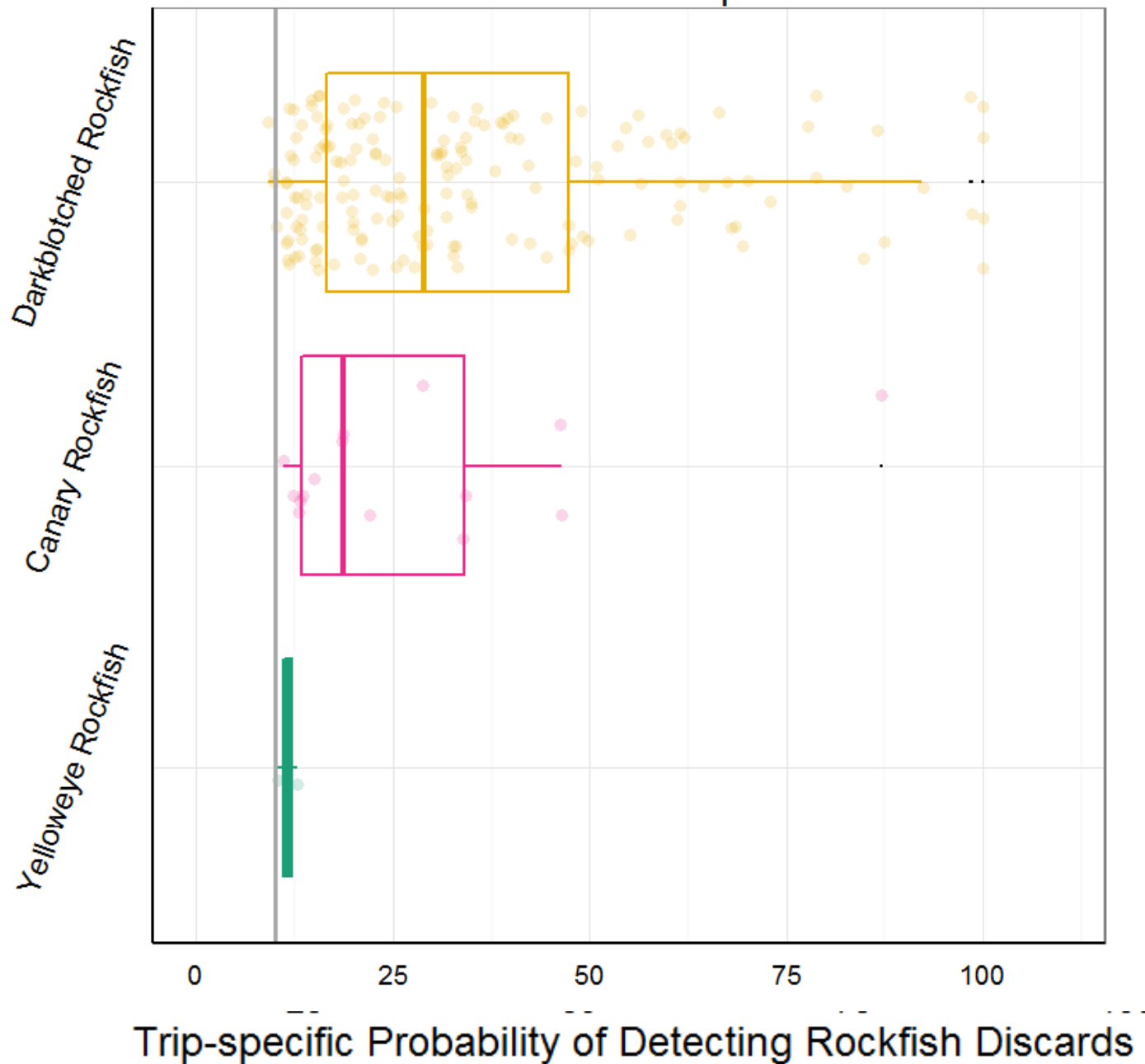
Canary Rockfish 15 Trips



Darkblotched Rockfish 172 Trips

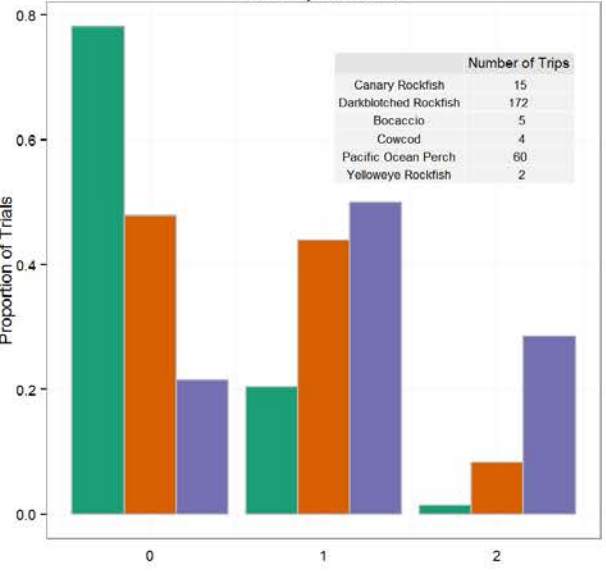


Nominal 10% Sample Rate



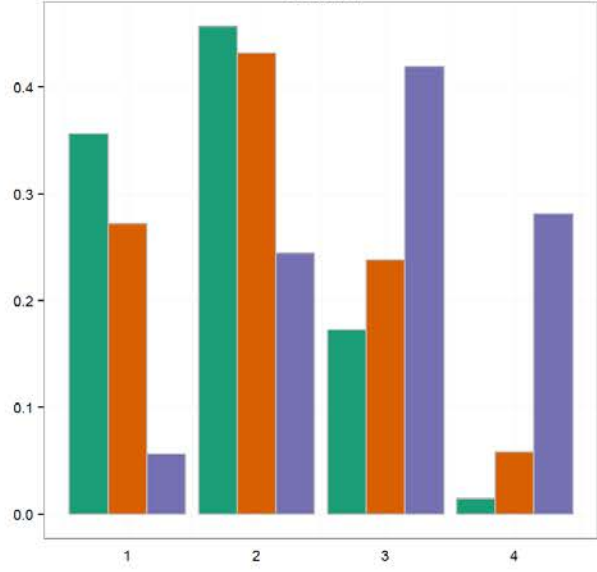
		Northern Area			Southern Area			Total
		Bottom Trawl	Hook and Line	Pot	Bottom Trawl	Hook and Line	Pot	
Trips (hauls)	Bocaccio	0	0	0	5 (6)	0	0	5 (6)
Number Fish (lbs)		0	0	0	16 (19)	0	0	16 (19)
Trips (hauls)	Canary Rockfish	15 (31)	0	0	0	0	0	15 (31)
Number Fish (lbs)		189 (303.5)	0	0	0	0	0	189 (303.5)
Trips (hauls)	Cowcod	0	0	0	4 (5)	0	0	4 (5)
Number Fish (lbs)		0	0	0	17 (7)	0	0	17 (7)
Trips (hauls)	Darkblotched Rockfish	133 (346)	5 (31)	1 (1)	32 (46)	0	1 (1)	172 (425)
Number Fish (lbs)		4,481 (3,181)	96 (266)	1 (1)	517 (118)	0	1 (1)	5096 (3567)
Trips (hauls)	Pacific Ocean Perch	53 (78)	4 (15)	0	0	0	0	57 (93)
Number Fish (lbs)		253 (723)	31 (56)	0	0	0	0	284 (779)
Trips (hauls)	Yelloweye Rockfish	2 (2)	0	0	0	0	0	2 (2)
Number Fish (lbs)		2 (12)	0	0	0	0	0	2 (12)

Yelloweye Rockfish

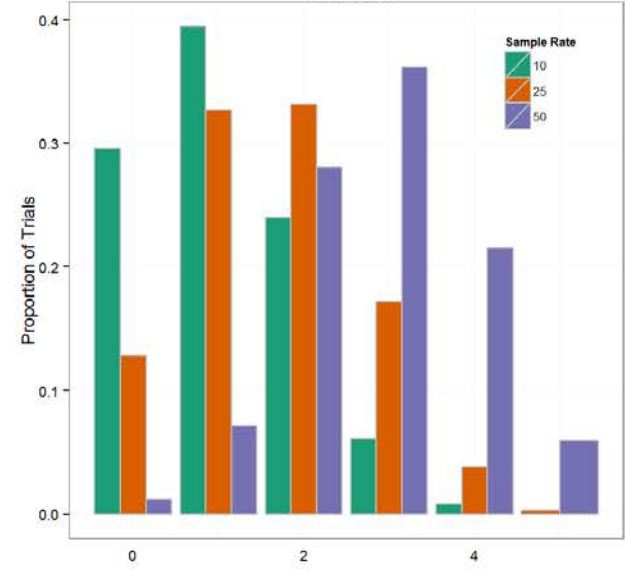


Number of Trips	
Canary Rockfish	15
Darkblotched Rockfish	172
Bocaccio	5
Cowcod	4
Pacific Ocean Perch	60
Yelloweye Rockfish	2

Cowcod

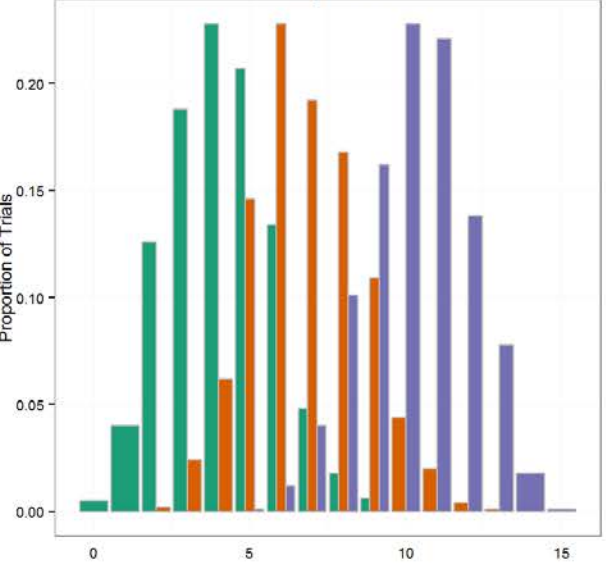


Bocaccio

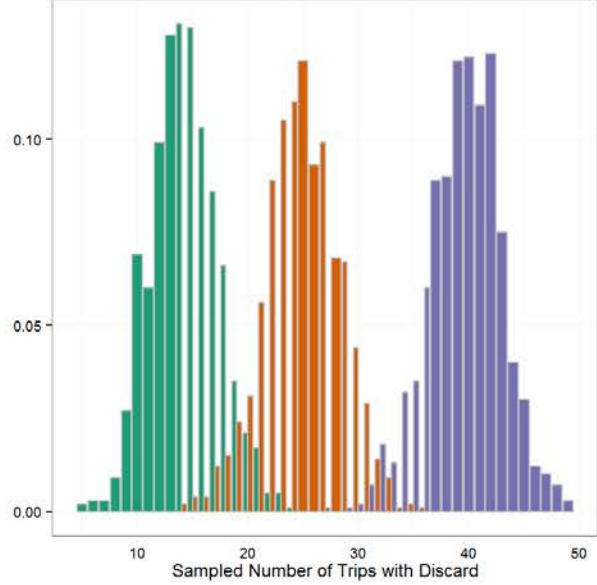


Sample Rate	
10	Green
25	Orange
50	Purple

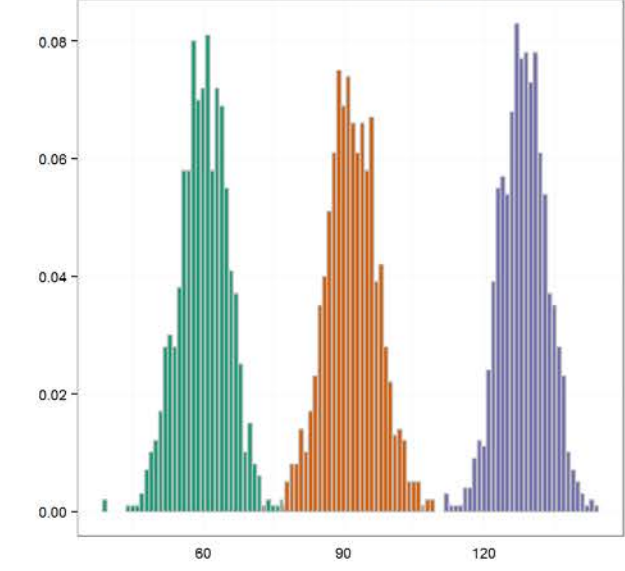
Canary Rockfish



Pacific Ocean Perch



Darkblotched Rockfish



Sampled Number of Trips with Discard

