



Electronic Monitoring Pilot Studies on Fixed Gear Vessels in Central California



Presented by: Michael Bell – Senior Project Director,
The Nature Conservancy



Overview of EM work done to date on Fixed Gear Vessels in Central California

1. EM pilot studies
 1. 2008 – NMFS run study
 2. 2010 – TNC work to expand on previous study

2. eCatch (elogbook) compliment to EM



Data Collection Efforts for Fixed Gear EM Pilot Studies

	2008	2010
Sampling Period	3.5 months (mid Aug-Nov)	5.5 months (mid July-Dec)
# of Vessels	3	6
Video and Imagery		
EM Data Collected		
# Sea Days	30	125
# Trips	25	97
# Hauls	155	329

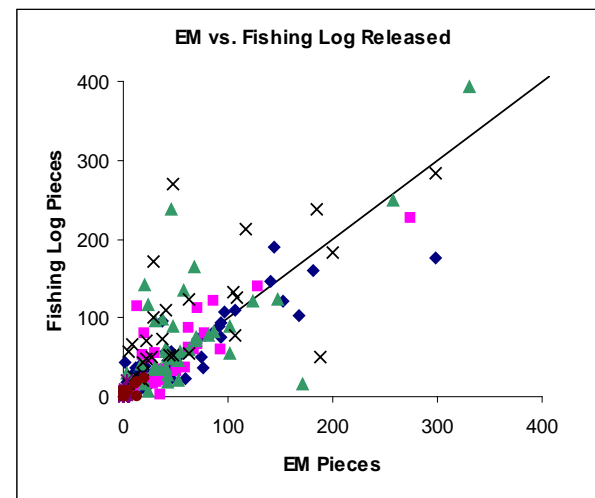
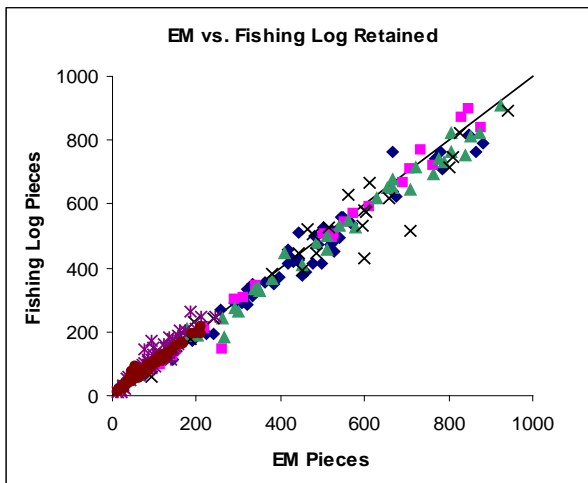
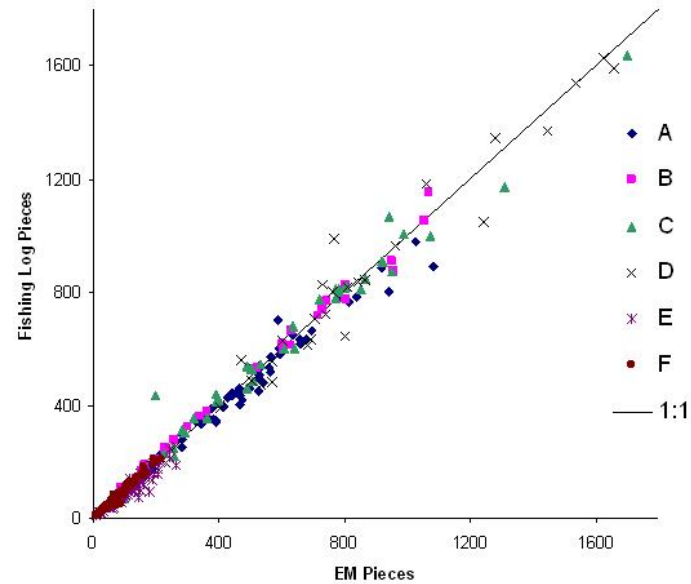


2008 + 2010 EM + Fishermen Logbook Comparison

- EM + Observer piece count match well (1% diff)
 - Of approx. 500 hauls, only one EM record unusable
- EM + Fishermen logbook piece count comparison
 - Overall:
 - -4% items for logbooks (2008), 0% diff (2010)
 - Target:
 - -2% for both sablefish and rockfishes for logbooks (2008)
 - +1% for sablefish + -3% for rockfishes for logbooks (2010)
 - Non-target:
 - -21% for skates + -34% for sharks for logbooks (2008)
 - -13% for skates + +14% for sharks for logbooks (2010)

2010 EM and Fishermen Logbook Comparisons

Overall

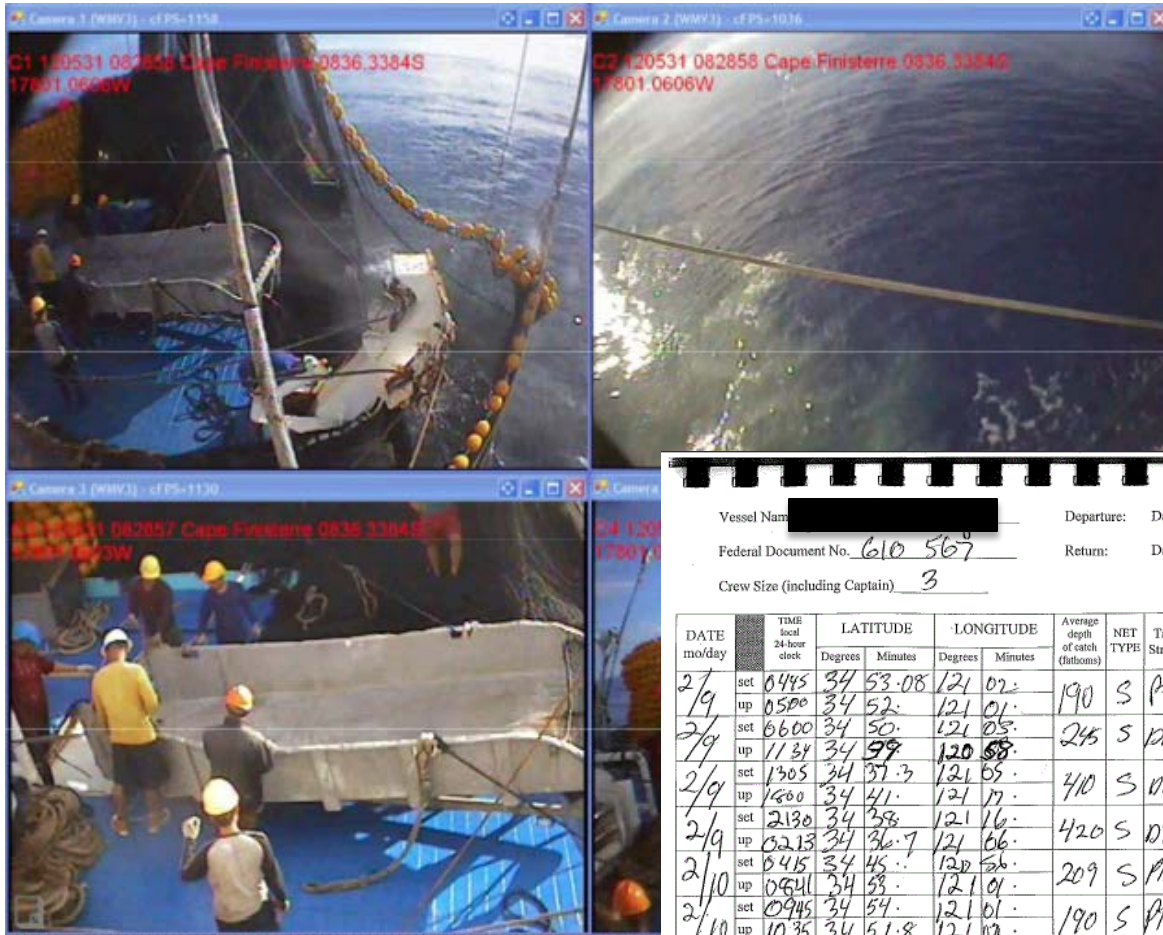


Key Findings from EM Pilot Studies

- Active monitoring rather than passive
- Improved agreement between EM + Fishermen logbooks (2010)
- Require full retention of all or some (rockfish) IFQ species
- 10% or other agreed % video review of all fishing events/trip
- Fishing deeper than 200 fm to minimize ofs concerns



EM and Captain's Logbook Corroboration



Difficult w/ paper logs

Vessel Name [REDACTED] Departure: Date 2 09 08 Time 1201 AM Port MOROCCO BAY
 Federal Document No. 610 567 Return: Date 2 10 08 Time 2130 Port MOROCCO BAY
 Crew Size (including Captain) 3 Buyer(s) [REDACTED]

DATE mo/day	TIME local 24-hour clock	LATITUDE		LONGITUDE		Average depth of catch (fathoms)	NET TYPE	Target Strategy	Estimated pounds retained each tow - enter 4-letter code from species code list provided									
		Degrees	Minutes	Degrees	Minutes				PTRL	BANK	SADG	SPMS	SSPN	REN	DOVE	USLP		
2/9	set 0445	34	53.08	121	02.	190	S	PTRL	400	200	10	200						
	up 0500	34	52.	121	01.													
2/9	set 0600	34	50.	121	05.	245	S	NTS	200		1000	100	400	700	300			
	up 1134	34	59	120	58.													
2/9	set 1305	34	37.3	121	05.	410	S	NTS			300		700		2000			
	up 1200	34	41.	121	17.													
2/9	set 2130	34	38.	121	16.	420	S	NTS			300		500		2000			
	up 0213	34	36.7	121	06.													
2/10	set 0415	34	45.	120	56.	209	S	PTRL	400		300			50	50	100		
	up 0841	34	53.	121	01.													
2/10	set 0945	34	54.	121	01.	190	S	PTRL	1500	1000	100	100			100	100		
	up 1035	34	51.8	121	02.													
2/10	set 1210	34	54.	121	02.	190	S	PTRL	1500	2500	50	10	10			100		
	up 1300	34	51.8	121	01.													
2/10	set 1410	34	54.	121	02.	190	S	PTRL										
	up 1511	34	51.	121	01.													

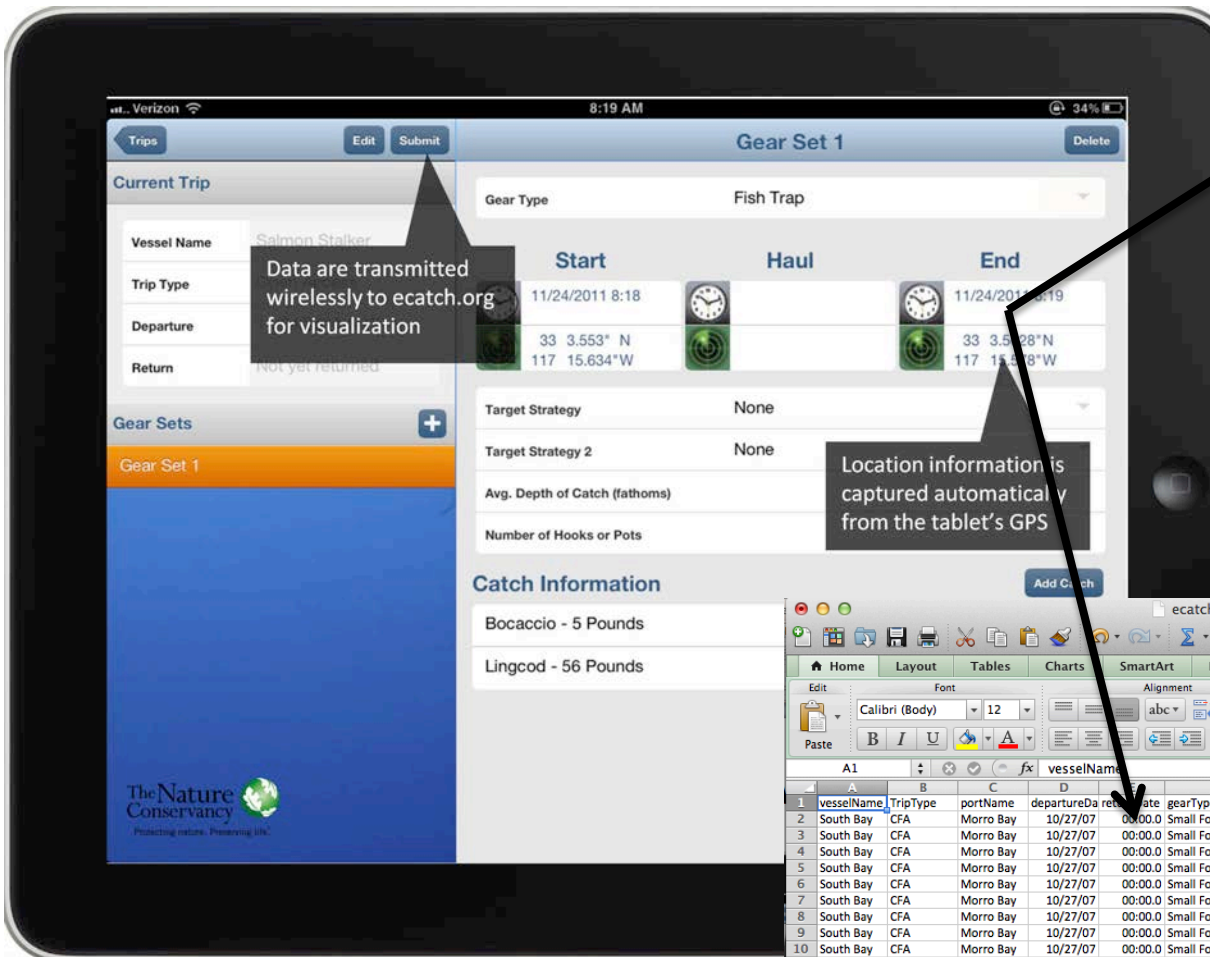
REMARKS: 46 HRS 283 GALS

TO BE COMPLETED BY AGENCY

VESSEL	FISH RECEIVING TICKET NO.
PORT	

N# 85812

Easier when logbooks are digital



The Excel spreadsheet displays a table of logbook data. The table has columns for vesselName, TripType, portName, departureDate, returnDate, gearType, avgDepthFa, CommonName, TotalWt, unitName, and Retained. The data includes various fish species like Pacific Whiting, Petrale Sole, and Lingcod, along with their weights and retention status.

	A	B	C	D	E	F	G	H	I	J	K	L
	vesselName	TripType	portName	departureDate	returnDate	gearType	avgDepthFa	CommonName	TotalWt	unitName	Retained	
1												
2	South Bay	CFA	Morro Bay	10/27/07	00:00	Small Foot-Rope Trawl	189	Pacific Whiting	400	Pounds	1	
3	South Bay	CFA	Morro Bay	10/27/07	00:00	Small Foot-Rope Trawl	189	Petrale Sole	150	Pounds	1	
4	South Bay	CFA	Morro Bay	10/27/07	00:00	Small Foot-Rope Trawl	189	Rex Sole	65	Pounds	1	
5	South Bay	CFA	Morro Bay	10/27/07	00:00	Small Foot-Rope Trawl	189	Sablefish	100	Pounds	1	
6	South Bay	CFA	Morro Bay	10/27/07	00:00	Small Foot-Rope Trawl	189	Splitnose Rockfish	60	Pounds	1	
7	South Bay	CFA	Morro Bay	10/27/07	00:00	Small Foot-Rope Trawl	189	Unsp. Slope Rockfish	100	Pounds	1	
8	South Bay	CFA	Morro Bay	10/27/07	00:00	Small Foot-Rope Trawl	190	Bank Rockfish	300	Pounds	1	
9	South Bay	CFA	Morro Bay	10/27/07	00:00	Small Foot-Rope Trawl	190	Petrale Sole	7000	Pounds	1	
10	South Bay	CFA	Morro Bay	10/27/07	00:00	Small Foot-Rope Trawl	190	Sablefish	100	Pounds	1	
11	South Bay	CFA	Morro Bay	10/27/07	00:00	Small Foot-Rope Trawl	190	Unsp. Slope Rockfish	100	Pounds	1	
12	South Bay	CFA	Morro Bay	11/2/07	00:00	Small Foot-Rope Trawl	190	Bank Rockfish	50	Pounds	1	
13	South Bay	CFA	Morro Bay	11/2/07	00:00	Small Foot-Rope Trawl	190	Blackgill Rockfish	10	Pounds	1	
14	South Bay	CFA	Morro Bay	11/2/07	00:00	Small Foot-Rope Trawl	190	Petrale Sole	240	Pounds	1	
15	South Bay	CFA	Morro Bay	11/2/07	00:00	Small Foot-Rope Trawl	190	Rosy Rockfish	50	Pounds	1	
16	South Bay	CFA	Morro Bay	11/2/07	00:00	Small Foot-Rope Trawl	190	Sablefish	3	Pounds	1	
17	South Bay	CFA	Morro Bay	11/8/07	00:00	Small Foot-Rope Trawl	190	Lingcod	35	Pounds	1	
18	South Bay	CFA	Morro Bay	11/8/07	00:00	Small Foot-Rope Trawl	190	Petrale Sole	35	Pounds	1	
19	South Bay	CFA	Morro Bay	11/8/07	00:00	Small Foot-Rope Trawl	190	Rosy Rockfish	10	Pounds	1	
20	South Bay	CFA	Morro Bay	11/8/07	00:00	Small Foot-Rope Trawl	190	Sablefish	60	Pounds	1	
21	South Bay	CFA	Morro Bay	11/8/07	00:00	Small Foot-Rope Trawl	190	Bank Rockfish	1500	Pounds	1	
22	South Bay	CFA	Morro Bay	11/8/07	00:00	Small Foot-Rope Trawl	190	Lingcod	10	Pounds	1	