

Summary of the 2006 stock assessment

William G. Clark and Steven R. Hare

Abstract

Growing concerns about net migration from the western to the eastern Gulf of Alaska have led the staff to doubt the accuracy of the closed-area assessments that have been done for many years. A coastwide assessment with survey apportionment was therefore done in addition to the closed-area assessments this year, and was used to calculate the available yield in each area. The two kinds of assessments produced very similar estimates of total abundance (total exploitable biomass about 400 M lb, total available yield about 80 M lb) but the distribution among areas was quite different, with the coastwide assessment showing more biomass and available yield in Areas 3B and 4 than the closed-area assessments and less in Area 2. Area 3A is about the same in both assessments.

Introduction

Each year the International Pacific Halibut Commission (IPHC) staff assesses the abundance and potential yield of Pacific halibut using all available data from the commercial fishery and scientific surveys (Appendix A). A biological target level for total removals from each regulatory area is calculated by applying a fixed harvest rate to the estimate of exploitable biomass in that area. This target level is called the “constant exploitation yield” or CEY for that area in the coming year. The corresponding target level for catches in directed fisheries subject to allocation is called the fishery CEY. It comprises the commercial setline catch in all areas plus the sport catch in Areas 2A and 2B. It is calculated by subtracting from the total CEY an estimate of all unallocated removals—bycatch of legal-sized fish, wastage of legal-sized fish in the halibut fishery, fish taken for personal use, and sport catch except in Areas 2A and 2B. Staff recommendations for catch limits in each area are based on the estimates of fishery CEY but may be higher or lower depending on a number of statistical, biological, and policy considerations. Similarly, the Commission’s final quota decisions are based on the staff’s recommendations but may be higher or lower.

For many years the staff has assessed the stock in each regulatory area by fitting a model to the data from that area. This procedure relied on the assumption that the stock of fish of catchable size in each area was closed, meaning that net migration was negligible. A growing body of evidence from both the assessments (Clark and Hare 2007a) and the ongoing mark-recapture experiment (Webster and Clark 2007) shows that there is probably a continuing eastward net migration of catchable fish from the western Gulf of Alaska (Areas 3B and 4) to the eastern side (Area 2). The effect of this migration on the closed-area stock assessments is to produce underestimates of abundance in the western areas and overestimates in the eastern areas. To some extent this has almost certainly been the case for some time, meaning that exploitation rates have been well above the target level in Area 2 and a disproportionate share of the catches have been taken from there.

In order to obtain an unbiased estimate of the coastwide stock this year, the staff built a coastwide data set and fitted the model to it. The coastwide estimate of exploitable biomass (414 M lb) is close to the sum of the closed-area estimates. To estimate the exploitable biomass

in each regulatory area, the staff apportioned the coastwide total according to the setline survey index of exploitable biomass in each area (survey CPUE of legal-sized fish multiplied by bottom area). Comparison of this distribution to the closed-area assessments shows that the closed-area assessments were too high by 50-100% in Area 2, meaning that the actual harvest rates there have been 50-100% above the coastwide target.

The closed-area assessments overestimate present abundance in Area 2 because in effect they include fish that are migrating to Area 2 from areas to westward. It could be argued that these really are Area 2 fish, so some degree of disproportionate harvest is appropriate. And to some degree it appears to be feasible. According to the present estimates, it would mean taking 25% of the coastwide yield from Area 2, which contains 16% of the coastwide biomass. This would not be a conservation issue for the stock as a whole. The fishery has been prosecuted in that fashion for decades, and it is probably sustainable, although harvest rates in the western areas (the source of the migrating fish) have been higher since 1996 than in previous years.

On the other hand, the general practice and the stated policy of the Commission is to harvest in proportion to actual abundance in each area, which means reducing the exploitation rate in Area 2 to the target level, now 20% (Hare and Clark 2007).

In calculating the CEY (Constant Exploitation Yield) estimates for Area 2 in 2007, the staff has taken a middle course, applying a 25% harvest rate in Area 2 instead of the target. This approach moves the exploitation rate closer to the target but makes some allowance this year for the effect of eastward migration on the historical distribution of catches. In future years, reducing the harvest rate in Area 2 to the coastwide target can be expected to result in a rebuilding of biomass that will increase CEY at the lower harvest rate.

Development of a coastwide assessment

In 2006 growing concerns about evidence of migration of legal-sized fish from the western Gulf of Alaska (Areas 3B and 4) to the east (Area 2) led the staff to question the accuracy of the customary closed-area assessments, which assume that the stock in each area is a closed population (Clark and Hare 2007a). The effect of migration on the customary closed-area assessments is to produce underestimates of present abundance in the areas from which fish are emigrating (Areas 3B and 4) and overestimates in the areas into which they are immigrating (Area 2). This happens because emigration inflates the closed-area estimates of fishing mortality in the source areas and immigration shrinks them in the receiving area. Moreover, there is no assurance that the sum of the biased estimates from faulty closed-area assessments will be an accurate estimate of the total coastwide abundance, so the staff was concerned about our estimates of total abundance as well as our estimates of abundance in each regulatory area.

In order to obtain accurate estimates of abundance both coastwide and by area, the staff conducted a coastwide assessment (Clark and Hare 2007b) and then estimated the proportion in each regulatory area using the survey index of exploitable biomass in each area (survey CPUE of legal-sized fish multiplied by bottom area). The coastwide assessment is not affected by migration because fish on the move contribute to the single series of commercial and survey catch rates wherever they go. The estimate of total abundance can therefore be expected to be accurate, and it is also more precise than the area-specific estimates because the coastwide data series are much less noisy than the data from individual areas.

Apportionment of the estimated coastwide biomass among regulatory areas is a difficult problem. Our best estimate of relative abundance in each area is certainly the survey index, but that relies on the assumption that survey catchability is the same in all areas, which is uncertain.

It seems likely that catchability is similar in Areas 2B and 2C, and in Areas 3A and 3B, but what about Areas 2A and 4B? Some checks for differences in survey catchability are reported below.

Data compilation

The first stage of work was to assemble coastwide series of commercial and survey data. Commercial catch-at-age and CPUE data series could be compiled straightforwardly because IPHC has collected specimen and logbook data from all areas for many years. Commercial CPUE data from Areas 2A and 4C were not included in the coastwide series because of unique features of the fisheries in those areas. Like the data series used for the closed-area assessments in Areas 3B and 4, the coastwide data series goes back only to 1996 because survey data are required to estimate the sex composition of commercial landings.

Survey data were more challenging because even in recent years there have been gaps in our survey coverage in Areas 2A, 4A, and 4D, and until 2006 no surveys at all on the eastern Bering Sea shelf, which comprises about half the continental shelf in the Commission area. The gaps in recent survey data in Areas 2A, 4A, and 4D were filled by interpolation in some cases and predictive relationships in others (Clark and Hare 2007a). A setline survey was done on the eastern Bering Sea shelf for the first time in 2006 (Dykstra et al. 2007). The 2006 survey CPUE (18 lb/skate) was used to scale an index of exploitable biomass calculated from the swept-area estimates of total abundance at length obtained from the annual NMFS trawl survey of the eastern Bering Sea shelf in 1982-2006.

Bycatch, sport catch, and personal use catches were similarly combined. In the end we had catch data sets including all removals, and properly weighted commercial and survey age composition and CPUE series representing the entire Commission area, including Area 4CDE. The coastwide data set is the same as any of the area-specific data sets; it just refers to the whole coast.

Model fits

The model fitted to the coastwide data is the same one used for the closed-area assessments. It can be fitted in various ways, the differences lying in how many parameters are estimated, what data types are fitted, and how the different data types are weighted. The standard coastwide fit has relatively few parameters and places a heavy weight on the total (not age-specific) commercial and survey CPUE series. This simple, rigid structure is needed for the closed-area assessments because some of the closed-area datasets are noisy. The coastwide dataset is much quieter so alternative fits could be considered. The staff did investigate a number of fits and chose a reference fit (Fig. 1) mainly on the basis of statistical goodness of fit. All of the alternatives gave exploitable biomass estimates in the vicinity of 400 M lb (Clark and Hare 2007b).

The reference fit estimates coastwide exploitable biomass at the start of 2007 to be 414 M lb. The sum of the closed-area assessments is 416 M lb, so at least in respect of total abundance the two kinds of assessment give the same result.

Area apportionment

To estimate the proportion of coastwide biomass in each regulatory area, we used a survey index of biomass calculated as the average of the last three years' survey CPUE of legal-sized fish multiplied by the bottom area lying between zero and 300 fathoms in each regulatory area.

The proportions and biomass estimates are shown in Table 1 in the section relating to the 2006 coastwide assessment.

Selectivity, target harvest rate, and CEY

In the coastwide assessment, exploitable biomass is calculated with the commercial length-specific selectivity schedule estimated in the assessment, and we have adopted that schedule as our standard commercial selectivity for use in the fishery simulations and calculations of spawning biomass per recruit that are done to choose a target harvest rate. The old standard was an average of Alaska commercial selectivities estimated in the closed-area assessments. The new coastwide schedule is a little higher, so a new harvest rate analysis produced a reduction in the target harvest rate, from 0.225 to 0.20 (Hare and Clark 2007).

The new coastwide target harvest rate of 0.20 was used to calculate total CEY in Areas 3A, 3B, and 4A. A lower rate was applied in Areas 4B and 4CDE for reasons given by Hare and Clark (2007). A higher rate—25%—was applied in Area 2. As explained below, this rate is at present midway between the coastwide target and the rate that would have to be applied to match the CEY that would be estimated by closed-area assessments in Area 2.

Comparison of the coastwide and closed-area assessments

The staff's biomass and CEY estimates are based mainly on the coastwide assessment with survey apportionment. We have also done the customary closed-area assessments for comparison (Fig. 2).

Standardization of commercial selectivities

In order to make the results of the coastwide and closed-area assessments comparable, we have calculated exploitable biomass in all areas with the new standard coastwide commercial selectivity, and we have generally used the new coastwide target harvest rate of 0.20 (0.15 in Areas 4B and 4CDE) to calculate CEY. For most areas this change has little effect, because for any given set of life history parameters, there is a tradeoff between the selectivity schedule used and the target harvest rate chosen, such that the target length-specific harvest rates come out about the same when a new selectivity and a new target harvest rate are adopted. The exception is Area 2B (and implicitly 2A), where exploitable biomass has been calculated in an irregular fashion for the last three years.

In 2003, when the present assessment model was adopted, the staff chose a standard commercial selectivity schedule that was near the middle of the schedules estimated in the closed-area assessments (Fig. 3). In fact it was very close to the average of all the locally estimated Alaska schedules, so it has been called the Alaska fixed schedule. This schedule was used in the harvest rate analysis that produced the old 0.225 target harvest rate, and it was used to calculate exploitable biomass in all areas except Area 2B (and implicitly 2A). It did not matter that it differed from the locally estimated schedules so long as the same schedule was used to do the harvest rate analysis and to calculate exploitable biomass. The locally estimated Area 2B schedule was substantially higher than the Alaska fixed schedule, and using the latter in Area 2B would have reduced the estimated exploitable biomass there by a third. The staff was unwilling to make such a drastic reduction on the strength of a new assessment and so used the locally estimated schedule for Area 2B. The same practice was followed in 2004 and 2005. This practice was irregular because we used the same target harvest rate in Area 2B as elsewhere, so in the case of Area 2B we were using one selectivity schedule for the harvest rate analysis and another

for the exploitable biomass calculation. In effect we were overstating the exploitable biomass in Area 2B (and 2A) by using a different yardstick there. Stated another way, we were fishing at a rate about 25% above the target rate appropriate to the higher selectivity.

In this year's closed-area assessments we have used the same commercial selectivity schedule—the coastwide standard—to calculate exploitable biomass in all areas including 2B (and 2A), and we have generally used the new coastwide target harvest rate (0.20). Except in Area 2B (and 2A), this just means applying a lower harvest rate to a higher exploitable biomass, because the coastwide schedule is higher than the old Alaska fixed schedule. But in Area 2B (and 2A) it means applying a lower harvest rate to a substantially lower biomass, because the coastwide schedule is lower than the locally estimated one. It is not as much lower as the old Alaska fixed schedule, but it lowers the calculated biomass by about a fifth (rather than a third).

Area-specific results

Along with the coastwide assessment results apportioned to areas according to the survey biomass index, Table 1 shows the evolution of closed-area results from last year's numbers to this year's. Last year's assessment estimated abundance at the beginning of 2006. This year's assessment re-estimates abundance at the beginning of 2006 in light of the 2006 data and also estimates abundance at the beginning of 2007. The 2007 exploitable biomass estimates are shown as they would have been calculated with the old standard commercial selectivities (local in Area 2B/2A, Alaska fixed elsewhere) and with the new coastwide standard.

In Area 2B, last year's closed-area estimate of biomass at the beginning of 2006 was 61 M lb, but that is revised downward sharply to 48 M lb in this year's closed-area assessment. This year's closed-area assessment estimates biomass at the beginning of 2007 to be 50 M lb as calculated with the old (local) selectivity, but only 39 M lb when calculated with the coastwide selectivity. Applying the coastwide target harvest rate of 20% to that gives a total CEY of 7.8 M lb, less than 60% of last year's 13.73 M lb. The main reasons for the decrease are the downward revision of estimated abundance at the start of 2006 (which also occurs in the 2C and 3B assessments) and the switch from local to coastwide selectivities. The lower harvest rate plays a small part. This year's estimate of exploitable biomass in Area 2B is 9.4% of the sum of closed-area estimates of exploitable biomass in 2007 (416 M lb). In contrast, last year's estimate of 61 M lb was 16% of the total. Even if we continued with the closed-area assessments, therefore, the estimated 2007 biomass in Area 2B would be much lower than last year, in both absolute and relative terms.

The survey estimate of the proportion of coastwide biomass in Area 2B is 6.5%, which applied to the coastwide estimate of 414 M lb gives 27 M lb in Area 2B. Given this biomass estimate, we would have to fish at 50% above the target rate to obtain the same CEY that would have been estimated for Area 2B if we had continued the closed-area assessments. The same is true in Areas 2A and 2C. It now appears that we have been fishing well above target in Area 2 for decades, and the fishery is probably sustainable so long as total removals from the entire stock are on target. Rather than ignore this longstanding pattern of exploitation, the staff has calculated CEY in Area 2 for 2007 using a harvest rate of 25% that is intermediate between the coastwide target (20%) and the historical practice (50% above 20% = 30% using this year's numbers). The estimated CEY of 6.75 M lb in Area 2B is therefore 25% of the biomass estimate of 27 M lb from the coastwide assessment.

Area 2A follows much the same course as Area 2B. The closed-area estimate of biomass in Area 2A is 12.5% of Area 2B biomass based on the survey index, and this relative value is

naturally the same when abundance in both areas is estimated by distributing the coastwide total according to the survey index.

The closed-area assessment in Area 2C follows a different course. There last year's closed-area estimate of biomass at the beginning of 2006 was 61 M lb, just as in Area 2B, and this estimate was also revised down sharply (to 47 M lb) in this year's closed-area assessment. But the change to coastwide selectivity then raises the Area 2C estimate to 57 M lb, close to last year's, with a CEY of 11.4 M lb. The 57 M lb estimated in Area 2C is 13.7% of the coastwide total, but the survey sees only 8.0% of the total in Area 2C, or 33 M lb, not much more than in Area 2B. At a harvest rate of 25%, this gives a total CEY of 8.25 M lb. Unlike Area 2B, therefore, Area 2C would not be greatly affected by changes in this year's closed-area assessment with coastwide selectivity, but it is greatly affected by the change to a coastwide assessment with survey apportionment.

In Area 3A, despite some ups and downs in the closed-area estimates, the total CEY is about the same in both kinds of assessment. Area 3A is the man in the middle, where exploitation rates have probably been close to the target in recent years.

As would be expected, Area 3B gains substantially from the coastwide assessment. This year's closed area estimate of CEY (10.4 M lb) is not much different from last year's (9.0 M lb), but the survey sees 20.8% of the coastwide biomass in Area 3B, giving a total CEY (at a 20% harvest rate) of 17.2 M lb. The relative increases are similar in Areas 4A and 4B although the absolute amounts are smaller.

Area 4CDE is unlike the other areas in that exploitable biomass there was calculated last year from the NMFS trawl survey estimate of total abundance. Last year's estimate was 36 M lb, which was calculated using a trawl survey catchability of 1.3 (rather than 1.0) to allow for herding. We have since been advised that halibut are probably not herded by the trawl bridles, so when we update that estimate this year we get 50 M lb. The setline survey of the eastern Bering Sea shelf in 2006 had a CPUE of 18 lb/skate, which when included in the survey index implies 10.1% share of coastwide biomass, or 41 M lb. Both of these estimates are valid, and either could be used this year. The trawl survey estimate is less variable than this year's setline survey CPUE (which a coefficient of variation of 20% vs 10% for the trawl survey), and there is no assurance that the setline survey will be repeated. In future years, therefore, it is likely that we will revert to using the trawl survey.

Checks for differences among areas in survey catchability

The area apportionments of exploitable biomass in this year's coastwide assessment rely on the survey index of abundance (survey CPUE multiplied by bottom area). Specifically, they assume that survey catchability is the same in all areas, meaning that a skate of survey gear fishing on the same density of fish on the bottom will have the same CPUE in all areas. This is not certain. It was long thought, for example, that survey catchability was lower in Area 2B because of competition with dogfish for the bait. Similarly, strong tides in some areas might be thought to reduce catchability.

In trawlable areas it is possible to check for differences in setline catchability among areas by comparing trawl and setline catch rates of fish of the same size. Figure 4 (reproduced from Clark and Hare 2007a) shows the ratio of IPHC setline to NMFS trawl survey catch rates at length in Areas 3A, 3B, and 4A, where the trawl survey can be expected to provide a reliable index of abundance. Unfortunately, this is not the case in other parts of the Gulf of Alaska. At

least in Areas 3A, 3B, and 4A, however, there is no indication of any large differences. The data are too noisy to rule out small or even moderate differences.

Another indication of differences among areas in survey catchability would be differences in the relative frequency of PIT tags in catches. The PIT tag release was done by tagging all fish caught on three skates of gear at every survey station in order to mark in proportion to abundance in all areas, so if survey catchability really is the same in all areas PIT tags should be recovered at the same rate (tags recovered per 10,000 fish scanned) in all areas. On the other hand, if survey catchability is low in some area, there should be fewer recoveries per 10,000 fish scanned from that area because a smaller proportion of the stock would have been marked on the survey. Table 2 shows the recovery rates of fish released coastwide in 2003 by year and area (Forsberg 2007 and references therein). In commercial catches there is no difference among Areas 2B, 3A, and 3B, but recovery rates were consistently and significantly higher in Area 2C, and there were some significant differences among ports in Area 3A. The recovery rate in Homer was consistently about half that in Kodiak and Seward.

In 2006 all fish caught on the IPHC setline survey were scanned as well, and their recovery rates were much higher than in commercial landings and consisted overwhelmingly of fish released at the station where they were caught. We thought we had achieved a very even distribution of marked fish by releasing them in proportion to abundance on the 10 nautical mile survey grid, but evidently the probability of catching a tagged fish depends on precisely where a boat fishes. There is probably some difference in the distribution of commercial fishing relative to the location of survey stations that accounts for the higher recovery rates in Area 2C and the lower rates in Homer. Whatever the reason, it reduces confidence in the finding that there is no difference in recovery rates among Areas 2B, 3A, and 3B.

The one clean comparison among areas is the recovery rates observed in the survey (last section of Table 2), which unfortunately were very few in Area 2. For what they are worth, however, they show no significant differences among areas with the exception of a marginally significant lower rate in Area 3B. In particular, like the commercial data they show no evidence of a lower recovery rate, and therefore a lower survey catchability, in Area 2.

References

- Clark, W.G., and Hare, S.R. 2006. Assessment and management of Pacific halibut: data, methods, and policy. Int. Pacific Halibut Comm. Sci. Rep. 83.
- Clark, W.G., and Hare, S.R. 2007a. Motivation and plan for a coastwide stock assessment. Int. Pac. Halibut Comm. Report of Assessment and Research Activities 2006 (this volume).
- Clark, W.G., and Hare, S.R. 2007b. Assessment of the Pacific halibut stock at the end of 2006.. Int. Pac. Halibut Comm. Report of Assessment and Research Activities 2006 (this volume).
- Dykstra, C.L., Geernaert, T.O., Soderlund, E., and Ranta, A.M. 2007. 2006 standardized stock assessment survey. Int. Pac. Halibut Comm. Report of Assessment and Research Activities 2006 (this volume).
- Forsberg, J.E. 2007. Portside sampling for recovered PIT tags in Pacific halibut. Int. Pac. Halibut Comm. Report of Assessment and Research Activities 2006 (this volume).

Fournier, D.A., Sibert, J.R., Majkowski, J., and Hampton, J. 1990. MULTIFAN, a likelihood-based method for estimating growth parameters and age composition from multiple length frequency data sets illustrated using data from southern bluefin tuna (*Thunnus maccoyi*). Can. J. Fish. Aquat. Sci. 47:301-317.

Hare, S.R., and Clark, W.G. 2007. 2006 harvest policy considerations. Int. Pac. Halibut Comm. Report of Assessment and Research Activities 2006 (this volume).

Webster, R., and Clark, W.G. 2007. Analysis of PIT tag recoveries through 2006. Int. Pac. Halibut Comm. Report of Assessment and Research Activities 2006 (this volume).

Table 1. Estimates of exploitable biomass and CEY from the 2006 assessment.

	Area 2A	Area 2B	Area 2C	Area 3A	Area 3B	Area 4A	Area 4B	Area 4CDE	Total
2006 total CEY	1.71	13.73	13.73	32.18	9.00	3.80	1.35	5.40	80.90
2006 catch limit¹	1.38	13.22	10.63	25.20	10.86	3.35	1.67	3.55	69.86
2006 exploitable biomass									
<i>2005 area assessments</i>	7.6 ²	61	61	143	45	19	9	36	382
<i>2006 area assessments</i>	6.0	48	47	163	35	16	11	50	376
2007 exploitable biomass									
<i>2006 area assessments</i>									
—Using old selectivities	6.3	50	48	159	40	15	10	50 ³	378
—Using new selectivities	4.9	39	57	186	52	17	10	50	416
—Proportion of total	0.012	0.094	0.137	0.447	0.125	0.041	0.024	0.120	1.000
—Total CEY ⁴	1.00	7.8	11.4	37.2	10.4	3.4	1.50	7.5	80.2
—Fishery CEY ⁵	0.73	7.27	7.61	29.31	9.97	2.83	1.21	5.20	64.13
<i>2006 coastwide assessment with survey apportionment</i>									
—Survey proportion	0.009	0.065	0.080	0.423	0.208	0.069	0.045	0.101	1.000
—Exploitable biomass	3.7	27	33	176	86	29	19	41	414
—Total CEY ⁴	0.93	6.75	8.25	35.2	17.2	5.8	2.85	6.15	83.13
—Fishery CEY ⁵	0.66	6.22	4.46	27.31	16.77	5.23	2.56	3.85	67.06
Other removals									
Sport catch	0.52	2.26	3.03	6.09	0.01	0.06	---	---	11.97
Legal-sized bycatch	.23	.19	.14	1.32	0.36	0.46	0.28	2.21	5.19
Personal use	0.04	0.30	0.60	0.43	0.05	0.04	0.00	0.09	1.55
Legal-sized wastage	0.00	0.04	0.02	0.05	0.01	0.01	0.01	0.00	0.14
Total	0.79	2.79	3.79	7.89	0.43	0.57	0.29	2.30	18.85
...excluding sport catch	0.27	0.53	---	---	---	---	---	---	---

Notes on Table 1:

1. 2006 catch limit and 2007 fishery CEY include sport catch in Areas 2A and 2B.
2. Area 2A exploitable biomass estimated as 12.5% of Area 2B.
3. Increase in 4CDE results from a reduction of the working value of trawl survey catchability from 1.3 to 1.0.
4. In the area-specific assessments, total CEY is calculated as 20% of exploitable biomass in Areas 2A through 4A, and 15% in Areas 4B and 4CDE. In the coastwide assessment with survey apportionment, total CEY is calculated as 25% of exploitable biomass in Area 2, 20% in Areas 3 and 4A, and 15% in Areas 4B and 4CDE.
5. Fishery CEY is calculated as Total CEY less the other removals detailed below.

Table 2. Relative frequency of PIT tags released in 2003 in subsequent catches.

Type and year	Area of catch	Fish scanned (thousands)	Number of recoveries	Recoveries per 10,000 scanned \pm std. dev.
2004 commercial	2B	209	72	3.4 \pm 0.4
	2C	125	92	7.4 \pm 0.8
	3A	448	128	2.9 \pm 0.3
	3B	320	80	2.5 \pm 0.3
2005 commercial	2B	196	57	2.9 \pm 0.4
	2C	147	86	5.9 \pm 0.6
	3A	511	194	3.8 \pm 0.3
	3B	276	117	4.2 \pm 0.4
2006 commercial	2B	219	73	3.3 \pm 0.4
	2C	138	69	5.0 \pm 0.6
	3A	511	183	3.6 \pm 0.3
	3B	203	67	3.3 \pm 0.4
Total commercial	2B	624	202	3.2 \pm 0.3
	2C	410	247	6.0 \pm 0.4
	3A	1469	505	3.4 \pm 0.2
	3B	799	264	3.3 \pm 0.2
2006 survey	2B	2.5	10	39 \pm 12
	2C	4.0	5	12 \pm 5
	3A	23.7	45	19 \pm 3
	3B	13.1	13	10 \pm 3
	Total	30.2	60	20 \pm 3

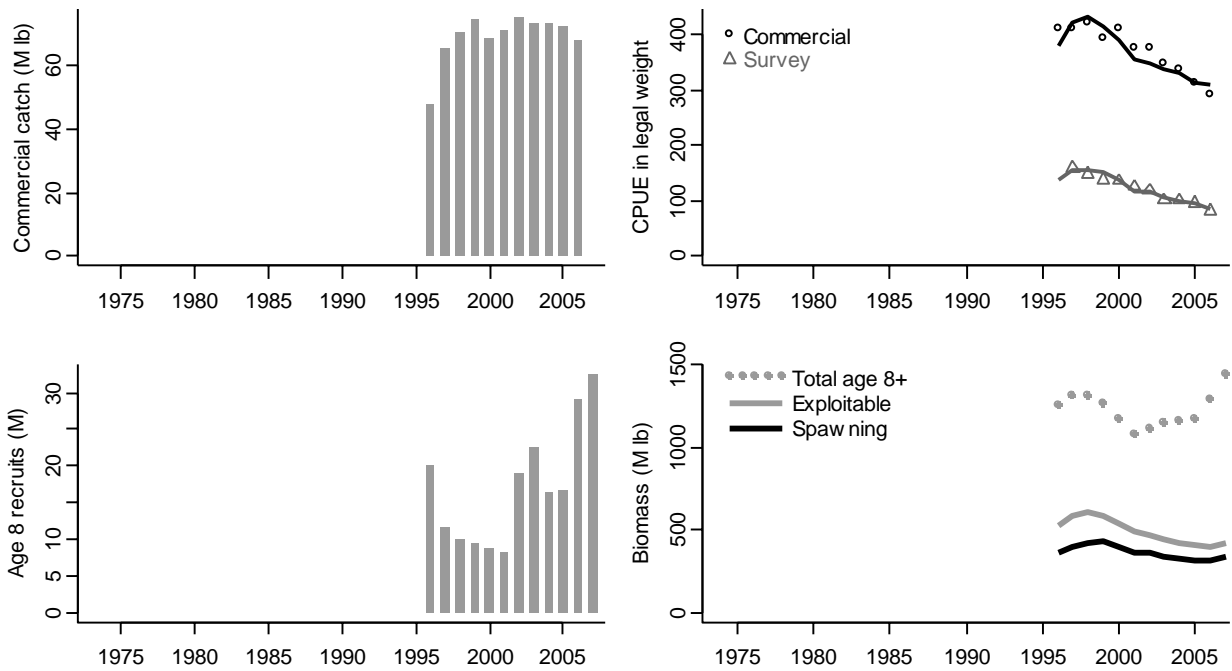


Figure 1. Features of the 2006 coastwide assessment. In the upper right panel, the points are observed CPUE (lb/skate) and the lines are model predictions.

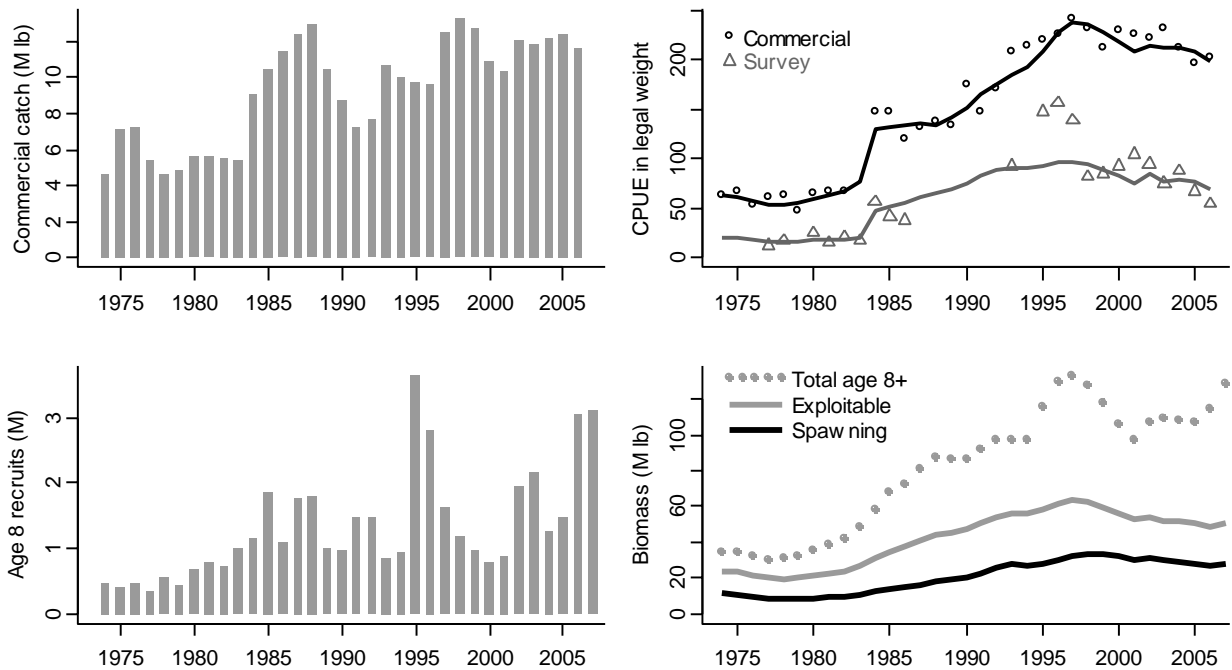


Fig. 2a. Features of the 2006 closed-area assessment in Area 2B.

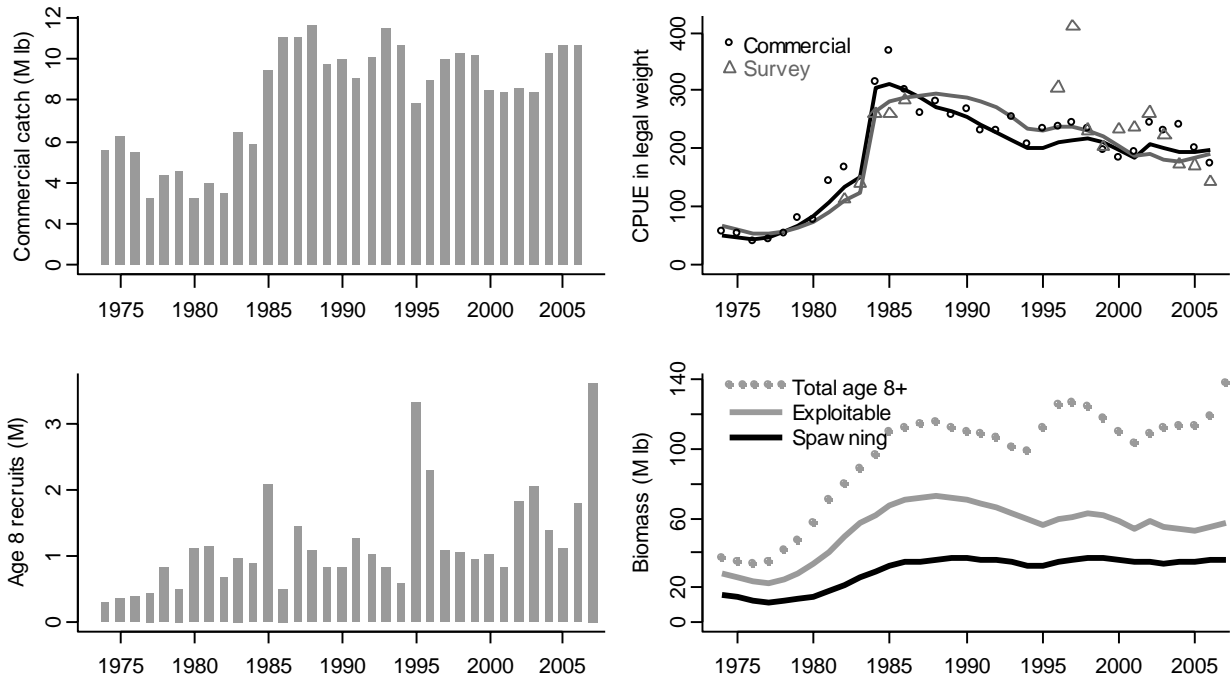


Fig. 2b. Features of the 2006 closed-area assessment in Area 2C.

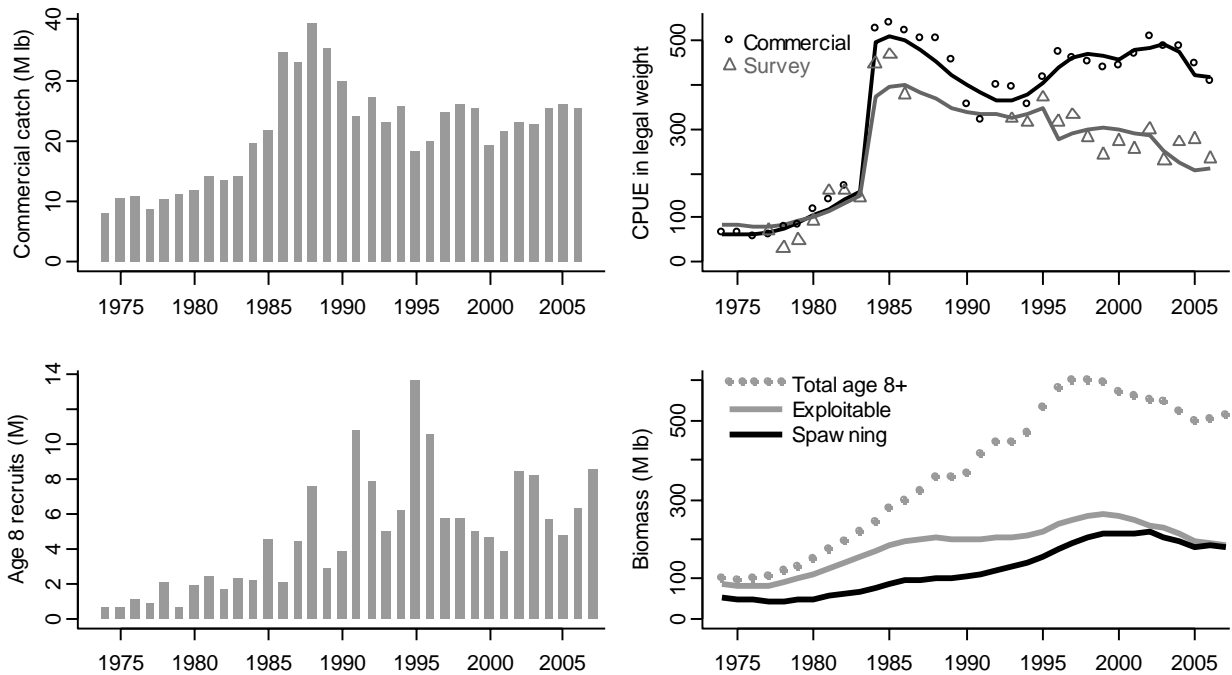


Figure 2c. Features of the 2006 closed-area assessment in Area 3A.

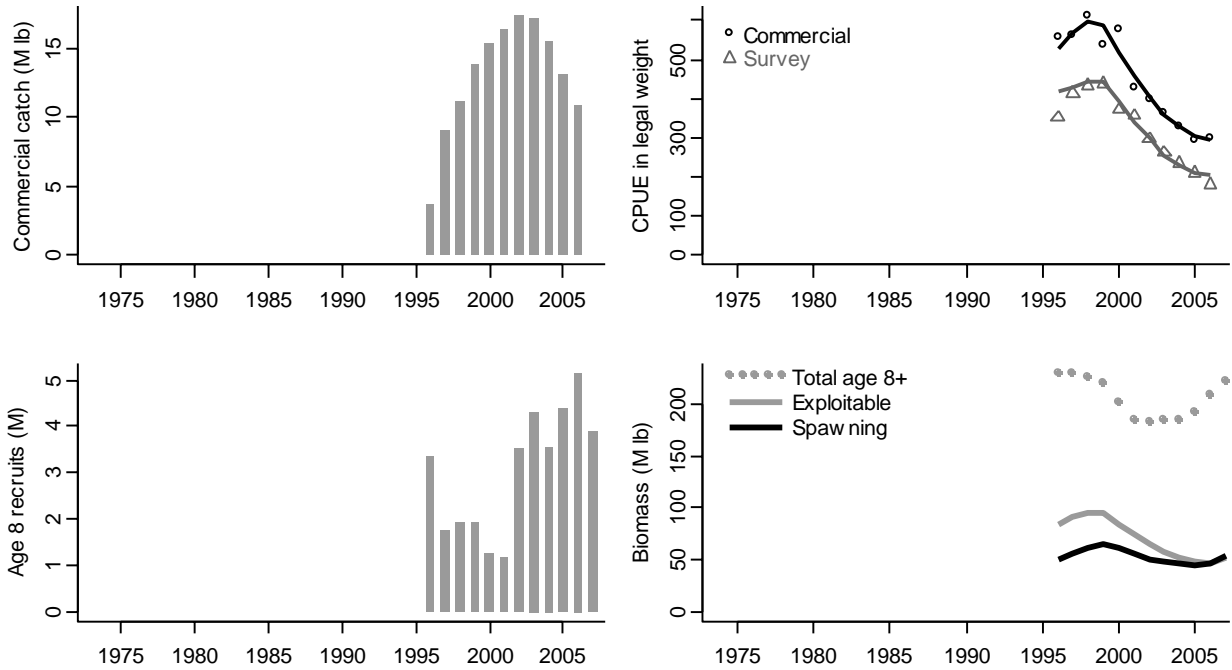


Figure 2d. Features of the 2006 closed-area assessment in Area 3B.

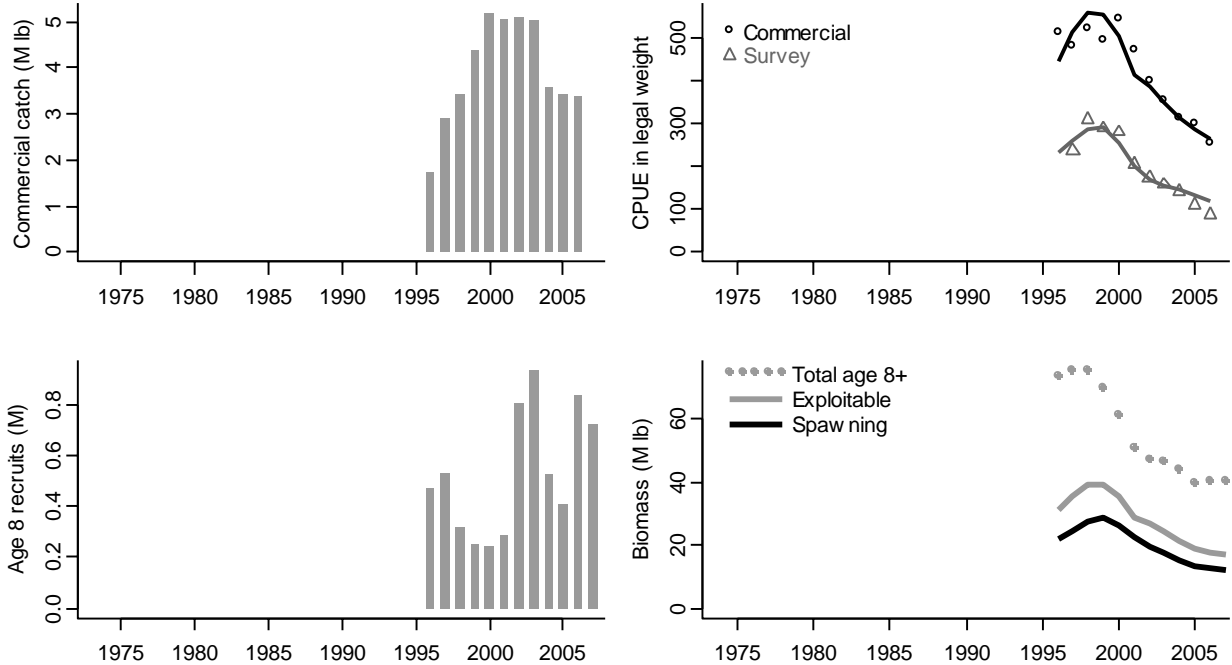


Figure 2e. Features of the 2006 closed-area assessment in Area 4A.

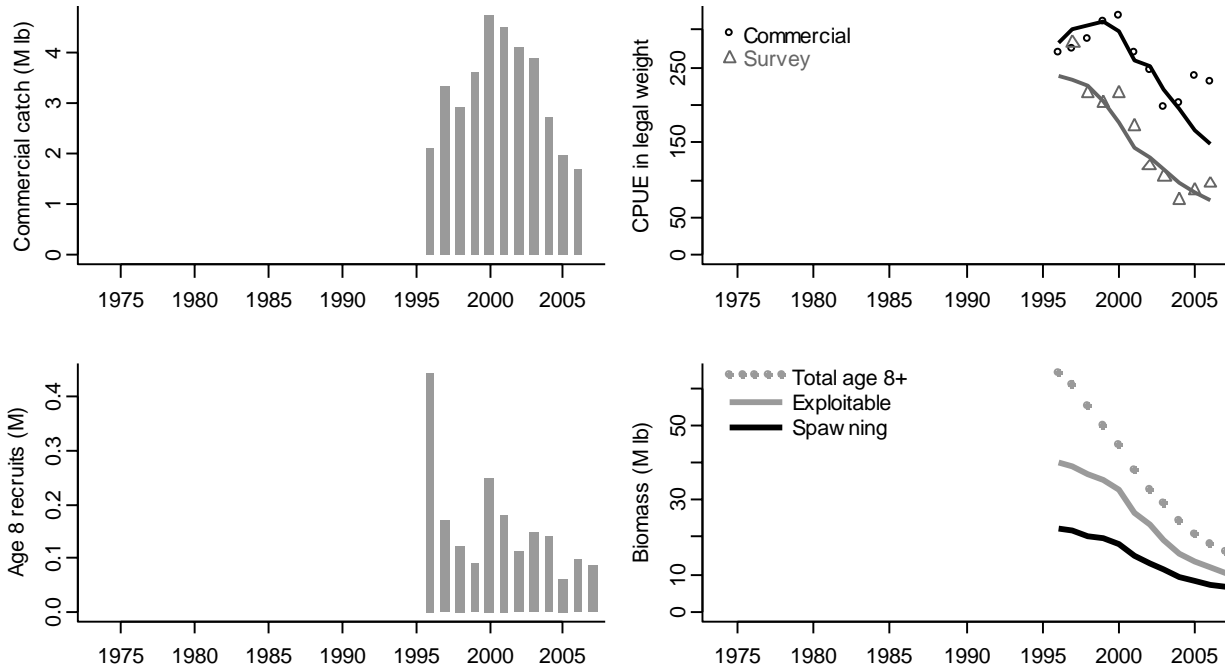


Figure 2f. Features of the 2006 closed-area assessment in Area 4B.

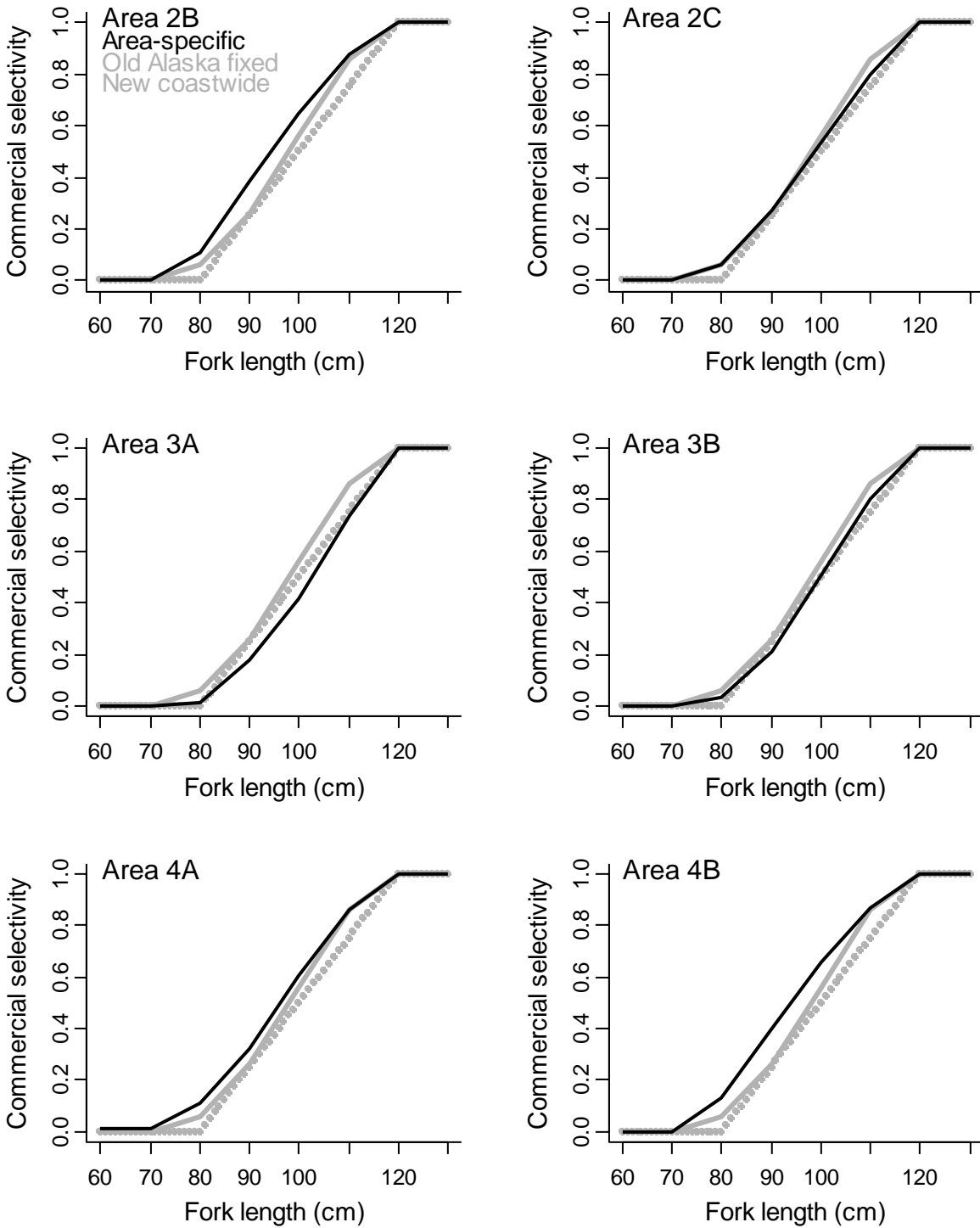


Figure 3. Commercial selectivity schedules. In each graph the broken gray line is the old standard (Alaska fixed) schedule, the solid gray line is the new coastwide standard schedule, and the black line is area-specific schedule estimated in the closed-area assessment for that area.

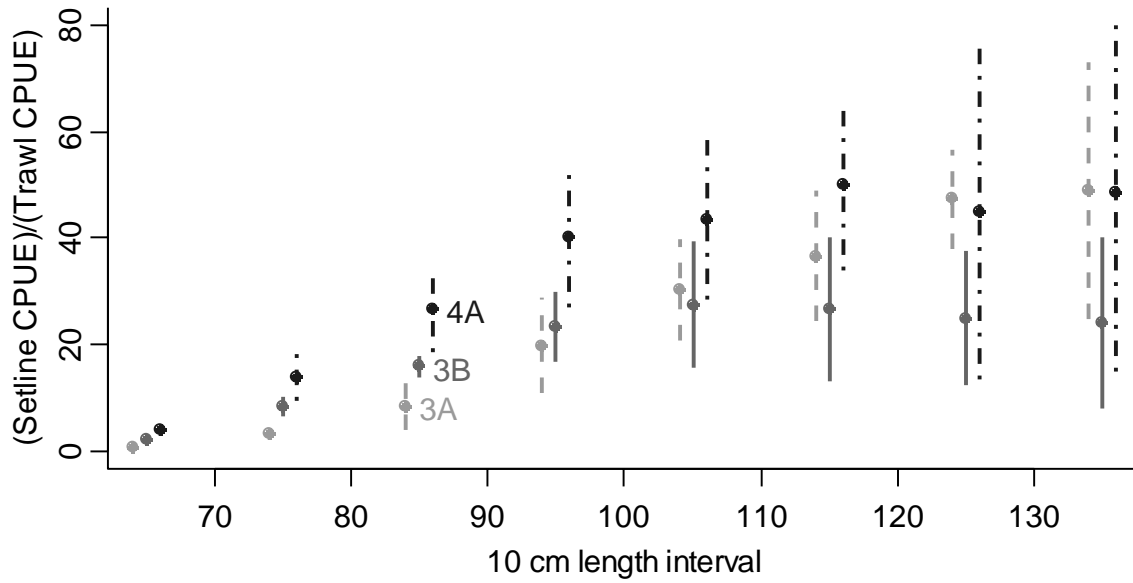


Figure 4. Ratio of setline survey catch rates at length (fish/skate) to trawl survey catch rates at length (fish/ha swept). The error bars are 95% confidence intervals.

Appendix A. Selected fishery and survey data summaries.

Table A1. Commercial catch (million pounds, net weight). Figures include IPHC research catches. Sport catch in Areas 2A and 2B is *not* included in this table.

	2A	2B	2C	3A	3B	4	4A	4B	4C	4D	4E	Total
1974	0.52	4.62	5.60	8.19	1.67	0.71	---	---	---	---	---	21.31
1975	0.46	7.13	6.24	10.60	2.56	0.63	---	---	---	---	---	27.62
1976	0.24	7.28	5.53	11.04	2.73	0.72	---	---	---	---	---	27.54
1977	0.21	5.43	3.19	8.64	3.19	1.22	---	---	---	---	---	21.88
1978	0.10	4.61	4.32	10.30	1.32	1.35	---	---	---	---	---	22.00
1979	0.05	4.86	4.53	11.34	0.39	1.37	---	---	---	---	---	22.54
1980	0.02	5.65	3.24	11.97	0.28	0.71	---	---	---	---	---	21.87
1981	0.20	5.66	4.01	14.23	0.45	---	0.49	0.39	0.30	0.01	0.00	25.74
1982	0.21	5.54	3.50	13.52	4.80	---	1.17	0.01	0.24	0.00	0.01	29.01
1983	0.26	5.44	6.38	14.14	7.75	---	2.50	1.34	0.42	0.15	0.01	38.39
1984	0.43	9.05	5.87	19.77	6.69	---	1.05	1.10	0.58	0.39	0.04	44.97
1985	0.49	10.39	9.21	20.84	10.89	---	1.72	1.24	0.62	0.67	0.04	56.10
1986	0.58	11.22	10.61	32.80	8.82	---	3.38	0.26	0.69	1.22	0.04	69.63
1987	0.59	12.25	10.68	31.31	7.76	---	3.69	1.50	0.88	0.70	0.11	69.47
1988	0.49	12.86	11.36	37.86	7.08	---	1.93	1.59	0.71	0.45	0.01	74.34
1989	0.47	10.43	9.53	33.74	7.84	---	1.02	2.65	0.57	0.67	0.01	66.95
1990	0.32	8.57	9.73	28.85	8.69	---	2.50	1.33	0.53	1.00	0.06	61.60
1991	0.36	7.19	8.69	22.93	11.93	---	2.26	1.51	0.68	1.44	0.10	57.08
1992	0.44	7.63	9.82	26.78	8.62	---	2.70	2.32	0.79	0.73	0.07	59.89
1993	0.50	10.63	11.29	22.74	7.86	---	2.56	1.96	0.83	0.84	0.06	59.27
1994	0.37	9.91	10.38	24.84	3.86	---	1.80	2.02	0.72	0.71	0.12	54.73
1995	0.30	9.62	7.77	18.34	3.12	---	1.62	1.68	0.67	0.64	0.13	43.88
1996	0.30	9.54	8.87	19.69	3.66	---	1.70	2.07	0.68	0.71	0.12	47.34
1997	0.41	12.42	9.92	24.63	9.07	---	2.91	3.32	1.12	1.15	0.25	65.20
1998	0.46	13.17	10.20	25.70	11.16	---	3.42	2.90	1.26	1.31	0.19	69.76
1999	0.45	12.70	10.14	25.32	13.84	---	4.37	3.57	1.76	1.89	0.26	74.31
2000	0.48	10.81	8.44	19.27	15.41	---	5.16	4.69	1.74	1.93	0.35	68.29
2001	0.68	10.29	8.40	21.54	16.34	---	5.01	4.47	1.65	1.84	0.48	70.70
2002	0.85	12.07	8.60	23.13	17.31	---	5.09	4.08	1.21	1.75	0.56	74.66
2003	0.82	11.79	8.41	22.75	17.23	---	5.02	3.86	0.89	1.96	0.42	73.19
2004	0.88	12.16	10.23	25.17	15.46	---	3.56	2.72	0.95	1.66	0.31	73.11
2005	0.80	12.33	10.63	26.03	13.17	---	3.40	1.98	0.53	2.58	0.37	71.82
2006	0.82	11.78	10.47	25.38	11.03	---	3.31	1.60	0.50	2.40	0.36	67.64

Table A2. Commercial CPUE (net pounds per skate).

Values before 1984 are raw J-hook catch rates, with no hook correction. 1983 is excluded because it consists of a mixture of J- and C-hook data. No value is shown for area/years after 1980 with fewer than 500 skates of reported catch/effort data.

	2A	2B	2C	3A	3B	4A	4B	4C	4D	4E	Total
J-hook CPUE:											
1974	59	64	57	65	57	---	---	---	---	---	---
1975	59	68	53	66	68	---	---	---	---	---	---
1976	33	53	42	60	65	---	---	---	---	---	---
1977	83	61	45	61	73	---	---	---	---	---	---
1978	39	63	56	78	53	---	---	---	---	---	---
1979	50	48	80	86	37	---	---	---	---	---	---
1980	37	65	79	118	113	---	---	---	---	---	---
1981	33	67	145	142	160	158	99	110	---	---	---
1982	22	68	167	170	217	103	---	91	---	---	---
1983	---	---	---	---	---	---	---	---	---	---	---
C-hook CPUE:											
1984	63	148	314	524	475	366	161	---	197	---	367
1985	62	147	370	537	602	333	234	---	330	---	407
1986	60	120	302	522	515	265	---	427	239	---	365
1987	57	131	260	504	476	341	220	384	---	---	357
1988	134	137	281	503	655	453	224	---	201	---	405
1989	124	134	258	455	590	409	268	331	384	---	381
1990	168	175	269	353	484	434	209	288	381	---	335
1991	158	148	233	319	466	471	329	223	398	---	330
1992	115	171	230	397	440	372	278	249	412	---	337
1993	147	208	256	393	514	463	218	257	851	---	376
1994	93	215	207	353	377	463	198	167	480	---	321
1995	116	219	234	416	476	349	189	---	475	---	348
1996	159	226	238	473	556	515	269	---	---	---	411
1997	226	241	246	458	562	483	275	335	671	---	412
1998	194	232	236	451	611	525	287	287	627	---	421
1999	---	213	199	437	538	500	310	270	535	---	393
2000	263	229	186	443	577	547	318	223	556	---	411
2001	169	226	196	469	431	474	270	203	511	---	377
2002	181	222	244	507	399	402	245	148	503	---	376
2003	184	231	233	487	364	355	196	105	389	---	350
2004	145	212	240	485	328	315	202	120	444	---	338
2005	155	197	203	446	293	301	238	91	379	---	313
2006	131	202	174	407	299	257	231	71	294	NA	292

Table A3. IPHC setline survey CPUE of legal sized fish in weight (net pounds per skate). Figures refer to all stations fished. For years when only the northern portion of Area 2B was fished, the CPUE is multiplied by 0.89 to reflect the relationship between overall CPUE and northern CPUE in years when the whole area was fished. The eastward expansion of the 3A survey in 1996 lowered average CPUE by around 25%; the raw values in the table should not be taken at face value. *No hook corrections* are applied; J-hook values are raw J-hook catch rates. Area 4EBS is the eastern Bering Sea shelf, first surveyed in 2006. The Total column is affected by a constructed series of eastern Bering Sea values (not shown).

	2A	2B	2C	3A	3B	4A	4B	4C	4D	4EBS	Total
J-hook surveys:											
1974	---	---	---	---	---	---	---	---	---	---	---
1975	---	---	---	---	---	---	---	---	---	---	---
1976	---	---	---	---	---	---	---	---	---	---	---
1977	---	13	---	73	---	---	---	---	---	---	---
1978	---	18	---	34	---	---	---	---	---	---	---
1979	---	NA	---	51	---	---	---	---	---	---	---
1980	---	25	---	95	---	---	---	---	---	---	---
1981	---	16	---	162	---	---	---	---	---	---	---
1982	---	21	145	180	---	---	---	---	---	---	---
1983	---	18	142	147	---	---	---	---	---	---	---
1984	---	25	---	217	---	---	---	---	---	---	---
C-hook surveys:											
1984	---	57	260	446	---	---	---	---	---	---	---
1985	---	42	260	466	---	---	---	---	---	---	---
1986	---	38	283	377	---	---	---	---	---	---	---
1987	---	NA	---	---	---	---	---	---	---	---	---
1988	---	NA	---	---	---	---	---	---	---	---	---
1989	---	NA	---	---	---	---	---	---	---	---	---
1990	---	NA	---	---	---	---	---	---	---	---	---
1991	---	NA	---	---	---	---	---	---	---	---	---
1992	---	NA	---	---	---	---	---	---	---	---	---
1993	---	93	---	323	---	---	---	---	---	---	---
1994	---	NA	---	313	---	---	---	---	---	---	---
1995	29	148	---	370	---	---	---	---	---	---	---
1996	---	156	306	317	352	---	---	---	---	---	---
1997	35	139	411	331	415	237	282	71	111	---	160
1998	---	82	232	281	435	310	216	---	---	---	149
1999	37	85	204	241	438	382	203	---	---	---	139
2000	---	93	233	272	373	286	216	---	213	---	136
2001	41	105	237	256	357	207	171	---	197	---	126
2002	33	95	261	299	297	174	119	---	257	---	120
2003	22	75	223	229	262	159	104	---	195	---	102
2004	27	88	173	270	236	142	73	---	132	---	102
2005	28	67	171	276	211	111	86	---	69	---	96
2006	16	55	144	232	181	88	95	---	63	18	83