

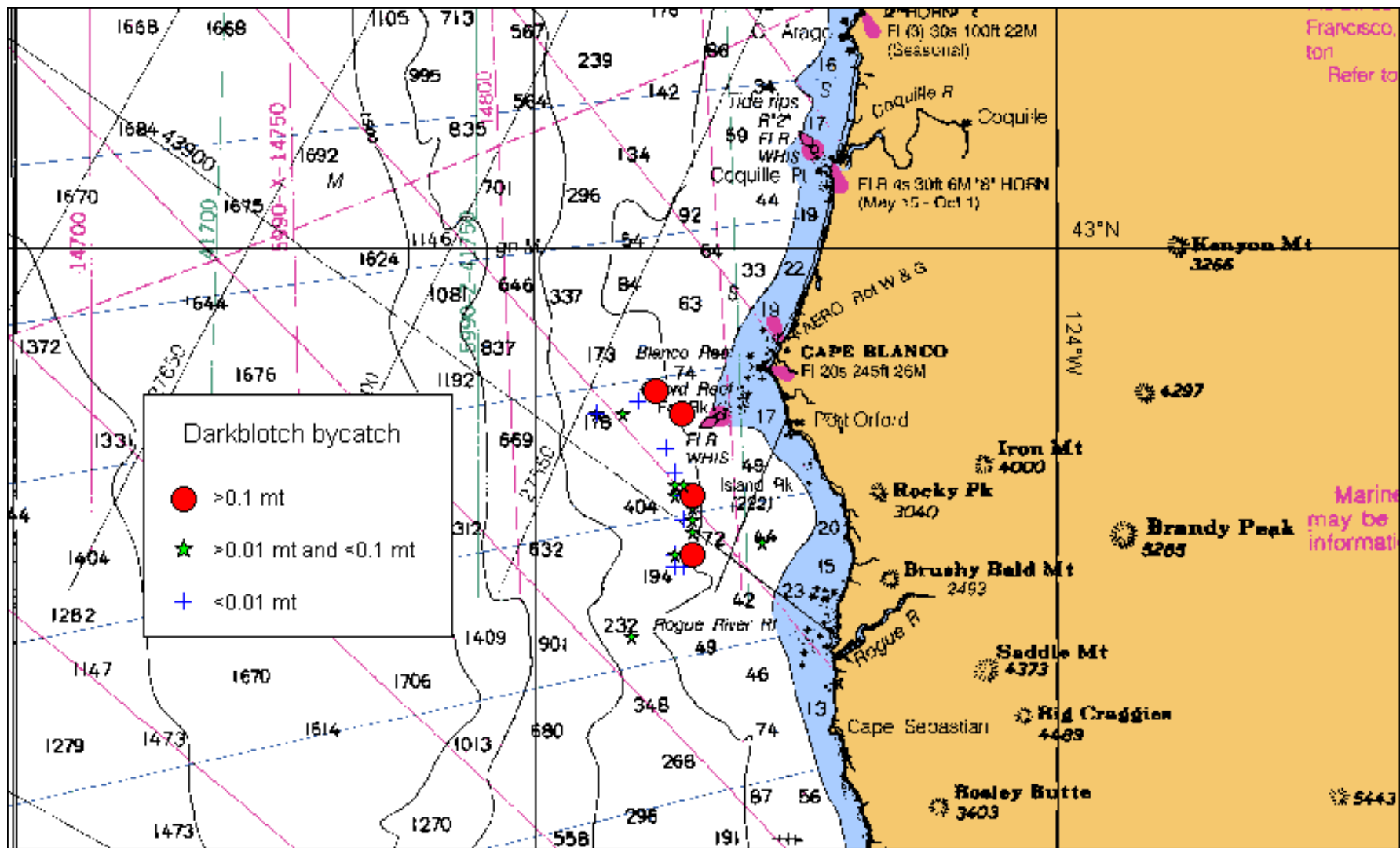
# Sea State, Inc

Agendum C.9.c  
Supplemental Public Comment  
September 2004

- **Works with pollock and flatfish trawl industry in Bering Sea, GOA, and whiting fleet in Pacific NW to manage coop harvests and monitor and reduce bycatch**
- **Designated as an agent for receipt of observer data from trawl vessels in these fisheries**
- **All whiting C/Ps utilize flow scales for accurate catch monitoring and carry two observers for catch sampling**
- **Data is sent to Ak groundfish observer program office at least daily (depends on observer schedules)**
- **Data automatically available to Sea State 20 minutes after transmission from vessels at NMFS protected web site**
- **Data downloaded at Sea State several times per day**  
**VMS installed on all whiting C/Ps. Sea State also designated by companies as an agent for receipt of VMS information (also checked several times daily if necessary).**

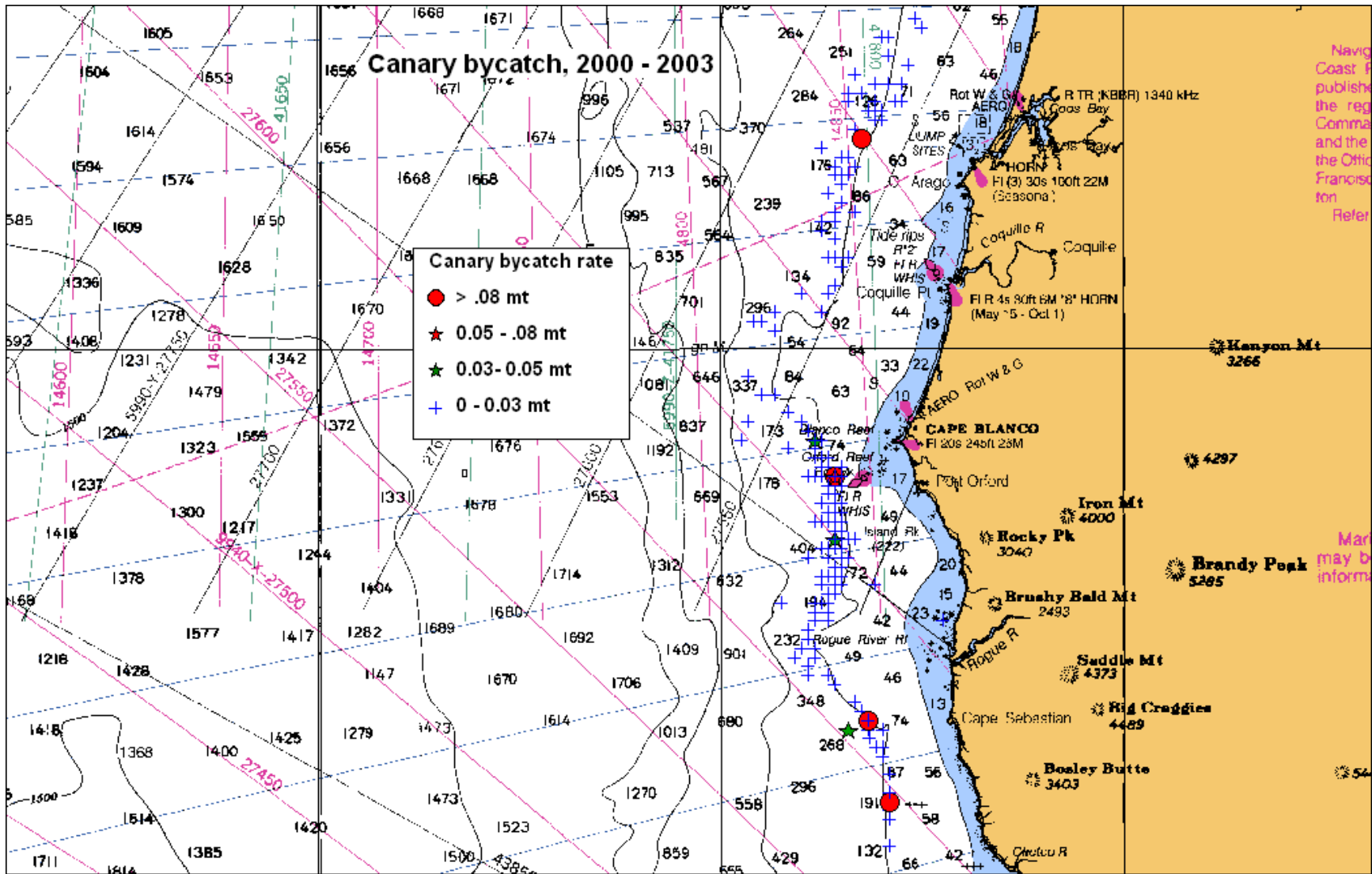
### Recent catch and bycatch in non-tribal whiting

Date	Whiting (mt)	Yellowtail (mt)	Widow (mt)	Canary (mt)	Chinook (N) - observed	Yellowtail Rate (kg/mt)	Widow Rate (kg/mt)	Canary Rate (kg/mt)	Chinook Rate (N/mt)
6/26/04	274	0.00	0.00	0.00	1	0.00	0.02	0.00	0.005
6/27/04	253	0.00	0.00	0.00	0	0.02	0.00	0.00	0.000
6/28/04	245	0.00	0.00	0.00	0	0.00	0.01	0.00	0.000
6/29/04	165	0.00	0.00	0.00	0	0.00	0.00	0.00	0.000
6/30/04	289	0.00	0.01	0.00	0	0.00	0.04	0.00	0.000
7/1/04	139	0.00	0.00	0.00	0	0.00	0.03	0.00	0.000
7/4/04	77	0.00	0.00	0.00	0	0.00	0.00	0.00	0.000
7/5/04	328	0.00	0.03	0.00	0	0.00	0.09	0.00	0.000
7/7/04	343	0.00	0.03	0.01	0	0.01	0.08	0.02	0.000
7/8/04	19	0.00	0.00	0.00	0	0.00	0.00	0.00	0.000
To date	26,261	1.53	7.19	0.12	363	0.06	0.27	0.00	0.014



Francisco  
ton  
Refer to

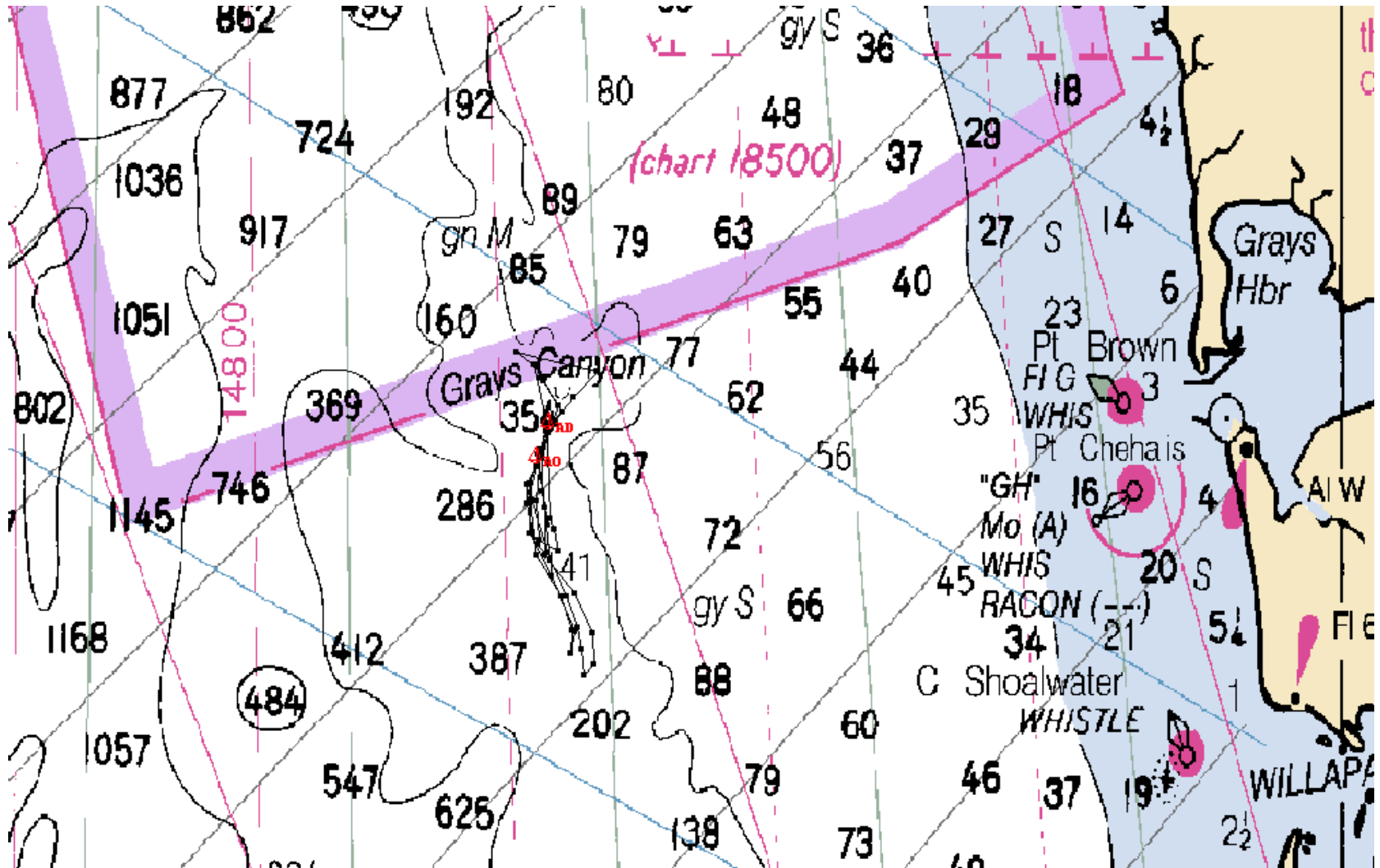
Marine  
may be  
informati



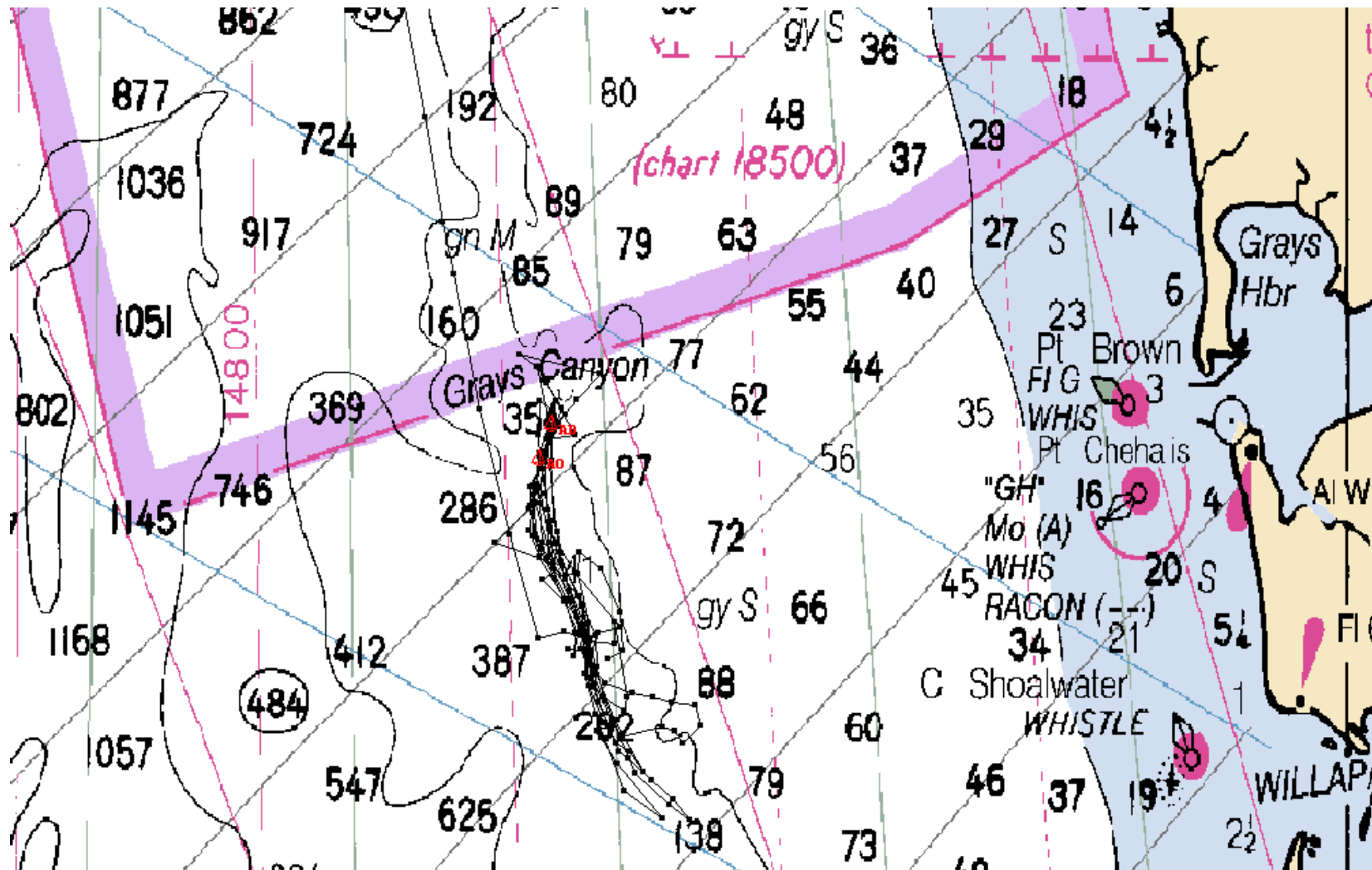
Navic  
Coast P  
publish  
the reg  
Comma  
and the  
the Offi  
Francis  
ton  
Refer

Mar  
may b  
inform

# VMS - last six hours (taken 9/16, 1000 hrs)



# VMS - last 1 day (taken 9/16, 1000 hrs)



# VMS - last 2 days (taken 9/16, 1000 hrs)

