

## CHAPTER IV

### *SOCIOECONOMIC ASSESSMENT OF THE 2009 OCEAN SALMON FISHERIES*

**SUMMARY:** Total 2009 exvessel value of the Council-managed non-Indian commercial salmon fishery was \$1.5 million. There was no commercial fishing permitted in California in 2009 and therefore the West Coast total comprises only Oregon and Washington. In real (inflation-adjusted) dollars, exvessel value was 24 percent above its 2008 level (\$1.2 million), which also had no fishing in California. The 2009 exvessel value is 91 percent below a recent five year (2004-2008) average, and 97 percent below the 1979 through 1990 inflation-adjusted average of \$58.7 million (including pinks). The 2009 average West Coast ocean harvest Chinook price was \$5.70 per pound. This was \$1.34 below the 2008 level (\$7.04 per pound) and \$0.27 above the 2007 level (\$5.43), after adjusting for inflation. The 2009 average Chinook price was the second highest, with 2008 having the highest price, recorded in more than 25 years in inflation-adjusted terms. At \$2.03 per pound, in inflation-adjusted terms, average 2009 West Coast coho prices were 22 percent lower than in 2008, 10 percent higher than in 2007, and 1 percent lower than a recent five year average (2004-2008). The preliminary number of vessel-based ocean salmon recreational angler trips taken on the West Coast in 2009 was 188,800, an increase of 181 percent from 2008, and 69 percent less than the 1979 through 1990 average. The total West Coast income impact associated with recreational and commercial ocean salmon fisheries for all three states combined was estimated at \$17.0 million in 2009. In inflation-adjusted dollars this was over twice the estimated 2008 level (\$7.4 million). Year 2009 has the second lowest income impacts on record with 2008 having the lowest on record and 2006 as the third lowest with \$36.2 million (inflation adjusted).

### **ALLOCATION OF THE SALMON RESOURCE**

Salmon management by the Council involves numerous allocation issues including:

- Determination of the amount of salmon available for ocean harvest after consideration of expected abundances, harvests by inside fisheries, and spawning escapement goals.
- Allocation of harvest among broad management areas and among port areas within the management areas.
- Allocation of harvest between Indian and non-Indian harvesters.
- Allocation of the non-Indian harvest between commercial and recreational harvesters.

The amount of salmon available for harvest in Council management areas depends, in part, on harvest in Canada and Alaska. Allocation of harvest between the West Coast, Canada, and Alaska is determined within the constraints of the PST.

In general, the recreational fishery has tended to have a more stable harvest than the commercial fishery (in both absolute and relative terms) (Figures IV-1 and IV-2). The majority of the annual variation in available ocean harvest is usually taken up in the commercial fishery. However, both fisheries have suffered substantial declines relative to harvest levels of the 1980s, the effects of which are amplified within specific geographic areas.

Decisions on allowable harvests for a particular stock often have implicit allocation effects on the geographic distribution of salmon harvest. Seasons may be more restrictive along a particular area of the coast to protect a depressed stock encountered in that area at a higher rate than other areas. The geographic distribution of harvest opportunity along the coast involves balancing the often conflicting objectives of maximizing ocean harvest and fairly distributing the responsibility for resource conservation. A brief outline of the regulatory objectives which shaped the 2009 season is provided in Chapter I; and an assessment of success in meeting the objectives is provided in Chapters II and III.

## COMMERCIAL SALMON FISHERIES

### *West Coast Non-Indian Commercial Ocean Fishery*

#### **Inseason Price Trends**

Monthly exvessel price data provide information on seasonal price trends (Table IV-1). Oregon and Washington 2009 Chinook prices were at their highest in May, reaching over \$6.50/pound. Oregon and Washington Chinook prices were at their lowest in July and September, respectively. Coho prices increased steadily through the season.

#### **Annual Trends (Seasons, Value, Prices, and Pounds)**

Available information on Chinook and coho exvessel price and value by species, compiled from state fish receiving tickets and expressed both in nominal terms and inflation-adjusted 2009 dollars, is presented in Tables IV-2, IV-3, and IV-4. Data on pink salmon are provided in Table IV-5. The gross domestic product implicit price deflator, developed by the Bureau of Economic Analysis, was used to adjust nominal values for inflation (Appendix D, Table D-22). Weights of landings by species and port for Chinook and coho are presented in Tables IV-6, IV-7, and IV-8. These tables and the following discussion refer to the non-Indian commercial fishery in Council management areas and associated state territorial ocean area waters.

Total 2009 exvessel value of the Council-managed non-Indian commercial salmon fishery was \$1.5 million, which is the second lowest on record. In real (inflation-adjusted) dollars, exvessel value was 24 percent above its 2008 level (\$1.2 million) and 97 percent below the 1979 through 1990 inflation-adjusted average of \$58.7 million (including pinks), and 92 percent below the 2004-2008 inflation-adjusted average of \$16.1 million (including pinks). Excluding 2008, the exvessel value closest to the 2009 value was \$7.1 million in 1998.

California did not have a commercial salmon fishery in 2009 or 2008. In 2007 the exvessel value of the California commercial ocean salmon catch was \$8.2 million and the 1979-2008 average was \$18.1 million (inflation adjusted). The 2009 exvessel value for the Oregon commercial catch (\$345 thousand) was down 31 percent from the 2008 value, and 98 percent below the 1979 through 1990 average (\$18.5 million), in inflation-adjusted terms. The 2009 exvessel value for the Washington non-Indian ocean commercial catch (\$1.2 million) was up 63 percent from the 2008 value (\$717 thousand). Over the last eight years (2002-2009) exvessel values of Washington landings have been the highest since 1993 (\$1.1 million, inflation-adjusted), but 2009 values were still 86 percent below the 1979 through 1990 inflation-adjusted average of \$8.3 million.

The 2009 average West Coast ocean harvest Chinook price was \$5.70 per pound, which is the second highest in the last 25 years. Years 2008 and 2007 had high Chinook price per pound with \$7.04 and \$5.43 per pound, respectively (inflation adjusted). Chinook 2006-2009 prices compared to previous years have not been this high since 1979, which had an average inflation-adjusted price of \$6.64 per pound. One of the main reasons 2009 prices were so high was due to the extremely restricted 2009 fishing season (see Chapter I and Appendix C for details). The 2009 price was 15 percent above the recent five year (2004-2008) average (\$4.94), in inflation-adjusted terms and 22 percent above the 1979-1990 average (\$4.66). At \$2.03 per pound, in inflation-adjusted terms average 2009 West Coast coho prices were 22 percent lower than in 2008, 10 percent higher than in 2007, but 32 percent lower than the 1979-1990 average.

In terms of number of fish, the 2009 coastwide, non-Indian commercial Chinook harvest (13,500 fish) decreased by 8 percent compared to 2008 (Figure IV-1). Historically, 2009 harvest of Chinook was the

lowest on record. The number of Chinook harvested was 98 percent below the long-term average 1976-2008, 711,000 Chinook). The coastwide average weight per Chinook (12.6 pounds) increased by 11 percent compared to 2008 (Appendix D, Tables D-2, and D-3). Coho catch increased in 2009 to 42,000 fish, over 18 times the 2008 coho harvest (2,100) and the second highest harvest since 1992. The coastwide average weight per coho (6.4 pounds) decreased 24 percent from 2008 (8.4 pounds), which was the second highest average weight for 1980 to the present. The highest weight in that time frame was 8.5 pounds in 2006. The coastwide coho exvessel value was \$543 thousand in 2009, which is almost 11 times more than in 2008 (\$46 thousand) and over twice the 2007 coho exvessel value (\$249 thousand), in inflation adjusted values (Figure IV-4). In 2009 the two ports with the most Chinook harvest (by weight) were Westport (55 percent) and Neah Bay (22 percent), whereas in 2008, Astoria (24 percent) and Westport (30 percent) were the two ports with the highest Chinook take (by weight). In 2009, North of Cape Falcon comprised about 95 percent of coastwide Chinook harvest (by weight) and there was no Chinook harvest in California. In 2008, North of Cape Falcon also comprised 84 percent and no Chinook harvest in California. Compared with 2008, Chinook harvest (by weight) in 2009, down 77 percent in Oregon and up 55 percent in Washington. The 2009 coho harvest (by weight) was nearly 35 times what it was in Oregon, compared to 2008, and nearly 9 times what it was in Washington, compared to 2008 (no coho were harvested in California in either year).

### **Ocean Commercial Salmon Harvesters**

Based on Pacific Coast Fisheries Information Network (PacFIN) data, 282 vessels participated in the West Coast commercial salmon fishery in 2009. This is up 45 percent from 2008 but down 72 percent from the 2007 total of 1,007 vessels. The coastwide vessel counts from PacFIN are lower than the totals derived from summing Appendix D state-level tables (Tables D-4, D-5, and D-6) because vessels may participate in more than one state and because of differences in the degree of data completeness at the time the 2009 data were summarized.

In 2009 and 2008, no California vessels landed salmon. In 2007, the active fleet in California was 601 vessels and in 2006, it was 477 vessels (Table D-4). In Oregon, the active fleet increased by 86 vessels in 2009 with 224 vessels compared to 138 vessels in 2008 (Table D-5). The active fleet in Washington increased by 11 to 97 vessels landing salmon in 2009 (Table D-6). Coastwide, the number of limited entry salmon permits issued in 2009 decreased by 78 from the previous year, to 2,477. Landings were made on 13 percent of all permits in 2009, up from 9 percent in 2008 and down from 44 percent in 2007. Years 2009 and 2008 are the lowest vessel participation years on record (1982-2008). From 1982 to 1993 an average of 5,193 of 7,942 total permits (65 percent) were used on an annual basis. Harvest opportunity began declining substantially at that time and some permits were purchased in a buyback program.

Coastwide in 2009, average per vessel inflation-adjusted exvessel value of salmon landings decreased 13 percent compared to 2008, to \$4,717 per vessel. Compared to 2008, 2009 average per vessel exvessel revenue was down 58 percent in Oregon, and up 41 percent in Washington. Some caution needs to be exercised in interpreting the per vessel average. For example, the averages may be influenced as much by the entry or exit of a disproportionate number of small or large harvesters from one year to the next as by a change in the average revenues of those vessels remaining in the fishery.

Additional historical information on landings by vessel size, percentages of the fleet responsible for the majority of harvest, and harvest by residence of those participating in the fishery off each state is provided in Appendix D.

### ***West Coast Treaty Indian Commercial Ocean Fishery***

Treaty Indian commercial fisheries off Washington operate under regulations established by the Council. While some of the treaty Indian harvest was for ceremonial and subsistence purposes, the vast majority of

the catch was commercial harvest. Commercial treaty Indian fisheries provide food to consumers and generate income in local and state economies through expenditures on harvesting, processing, and marketing of the catch. From May through September 15<sup>th</sup>, the treaty Indian ocean troll fishery harvested 13,000 Chinook (104,900 pounds), 60,100 coho (343,700 pounds) in 2009, compared with 21,800 Chinook (164,300 pounds), 14,300 coho (122,700 pounds) in 2008 (Tables A-15 and D-3). For all of 2009 the preliminary exvessel value of Chinook and coho landed was \$1.0 million and the inflation adjusted exvessel value in 2008 was \$0.9 million (values based on PacFIN data).

### *Columbia River Commercial Fishery*

Harvest in the ocean salmon fisheries affect inriver fisheries by affecting the number of fish available for inside treaty Indian and non-Indian harvest. Table IV-9 shows the exvessel value of Columbia River commercial harvest of Chinook, coho and chum salmon. All prices and values in the table and the following discussion are reported in inflation-adjusted dollars. Exvessel prices for inriver catches of Chinook vary considerably with race (spring versus fall Chinook) and stock (tules versus brights). Spring Chinook generally bring the highest prices and tule fall Chinook and chum the lowest.

Total 2009 exvessel value of commercial salmon harvested in the Columbia River was \$5.8 million. This was 24 percent below the inflation-adjusted 2008 (\$7.7 million) level. Total exvessel value for non-Indian commercial salmon harvested in the Columbia River was \$3.6 million in both 2008 and 2009 (Table IV-9).

The total 2009 exvessel value of treaty Indian salmon harvested in the Columbia River and sold on fish tickets was \$2.2 million. This is 46 percent below the 2008 (\$4.1 million) value. Note that these values include only those sales made to licensed fish buyers. Treaty Indian fisher sales to the public are accounted for in harvest monitoring (Table B-20), but estimates of the pounds and value of such sales were not included in Table IV-9.

### *Other Inside Commercial Fisheries*

#### **Puget Sound and Washington Coastal Inside Fisheries**

Information on 2009 Puget Sound and Washington coastal inside fisheries is preliminary. Based on PacFIN data, the 2009 exvessel value reported for all salmon species taken in the commercial non-Indian fisheries in Puget Sound and Washington coastal inside fisheries (excluding the Columbia River) was \$4.4 million. Of this, \$1.3 million was for Chinook and coho. In 2008, the total inflation-adjusted exvessel values for the commercial non-Indian salmon fisheries in these areas were \$4.5 million for all salmon species and \$1.0 million for Chinook and coho (adjusted for inflation). The 1981 through 2008 inflation adjusted average exvessel value is \$17.5 million with \$4.4 million for Chinook and coho.

The preliminary 2009 exvessel value reported to PacFIN (as of January 22, 2010) for all salmon species taken in the commercial treaty Indian fisheries in Puget Sound and Washington coastal inside fisheries (excluding the Columbia River) was \$4.5 million. Of this, \$3.9 million was for Chinook and coho. In previous years, substantial additional landing reports have come in after publication of this review. The values for 2008 were \$12.5 million for all salmon species and \$7.9 million for Chinook and coho (adjusted for inflation). The 1981 through 2008 inflation adjusted exvessel value is \$21.8 million with \$8.2 million for Chinook and coho.

#### **Klamath River Fisheries**

Commercial sales in the Yurok and Hoopa Valley Reservation Indian fall gillnet fisheries in the Klamath River occurred in 1987-1989, 1996, 1999-2004, and 2007-2009. Average commercial catch of fall Chinook was 17,400 in those years, most of which occurred in the estuary. Commercial sales also

occurred in spring gillnet fisheries in 1989, 1996, 2000-2004, and 2007-2009, with an average of about 1,400 fish sold. The 1989 harvest of 27,700 Chinook was sold for \$852,000 (unadjusted for inflation, \$1.3 million adjusted to 2009 dollars) and had an average per fish weight of 15.4 pounds. For the 1996 harvest of 3,129 spring Chinook and 40,147 fall Chinook, the value at first sale was estimated at \$525,000 (unadjusted for inflation, \$693,000 adjusted to 2009 dollars). The average weight per fish landed in 1996 was 13.5 pounds. Records were not available for the weight and value of harvests after 1996 as each Indian fisher now markets their fish independently. In recent years the fishery has occurred fairly regularly with the exceptions of 2005 and 2006. The commercial fall Chinook harvest was 15,700 Chinook in 2009, compared to 12,200 Chinook in 2008 (Appendix B, Table B-5).

## **CEREMONIAL AND SUBSISTENCE SALMON FISHERIES**

In addition to the commercial Indian fisheries discussed above, fish are taken in Indian fisheries each year for ceremonial and subsistence purposes. Estimates of the amount of salmon used for ceremonial and subsistence purposes are documented in Appendix B. Discussion of the importance of ceremonial and subsistence fish to Indian communities is presented in Appendix B to Amendment 14 of the salmon FMP.

## **RECREATIONAL SALMON FISHERIES**

### *Ocean*

The preliminary number of vessel-based ocean salmon recreational angler trips taken on the West Coast in 2009 was 188,800, an increase of 181 percent from 2008, but 69 percent less than the 1979 through 1990 average. Compared with 2008, preliminary estimates of the number of trips taken in 2009 increased by over 170 percent in both Oregon, and Washington. California effort was up substantially in comparison to 2008 but redistributed to the north and still severely depressed compared to historic levels. Note that Washington effort estimates in Tables IV-10 and IV-13 differ from those in Tables I-4 and Appendix A Table A-17 because the former exclude bank effort from the Columbia River north jetty.

Recreational salmon fishing takes place primarily in two modes, (1) anglers fishing from privately owned pleasure crafts, and (2) anglers employing the services of the charter boat fleet. In general, success rates on charter vessels tend to be higher than success rates on private vessels. Small amounts of shore-based effort directed toward ocean area salmon occur, primarily from jetties and piers. Coastwide, the proportion of angler trips taken on charter vessels in Washington, Oregon and California was relatively stable, declining from 24 percent in 2008 to 23 percent in 2009 with a decline in the charter trips proportion in California and Washington and an increase in Oregon. Figure IV-5 and Tables IV-10, IV-11, IV-12, and IV-13 display details of effort and catch by port area and mode for each state.

### **California**

The California fishery was closed with the exception of late season opening that occurred in the Crescent City and Eureka areas. There were 5,400 trips during that opening, compared to 2008, where only Fort Bragg had an opening with 391 angler trips. There were 673 Chinook caught on the 5,400 trips with 570 Chinook caught on 4,700 private vessel trips. There were 0.127 fish per trip for the opening.

### **Oregon**

Ocean recreational salmon trips in 2009 in Oregon were up 178 percent to 84,600 trips from an estimated 30,400 angler trips in 2008 (Tables IV-10 and IV-12). Total 2009 trips were 5 percent above the most recent five year average (2004 through 2008). Newport effort was up 440 percent and Astoria effort up 235 percent, compared to 2008. The other Oregon port areas have an increase in effort ranging from 24 percent in Brookings to 145 percent in Tillamook. The charter industry share of Oregon recreational salmon trips in 2009 was about 15 percent, which was more than double 2008 but similar to other recent years (Figure IV-5 and Table IV-12).

From 1984 to 1993, coho comprised 87 percent of the Oregon recreational ocean salmon catch, on average. From 1994 through 1998 the lack of opportunity to retain coho south of Cape Falcon generally resulted in much lower angler success rates. With the opportunity to retain coho in mark-selective fisheries south of Cape Falcon beginning in 1999, salmon retention rates increased 75 percent in 1999 to 0.43 salmon per angler day, from 0.25 in 1998. From 2002 through 2008, retention rates ranged between 0.44 and 1.07 salmon per angler day. The retention rate for 2009 was slightly higher than this range at 1.08. Coho contributed 98% of the catch.

## **Washington**

In 2009, 98,900 ocean angler trips were taken on vessels on the Washington coast (Tables IV-10 and IV-13), an increase of 172 percent from the 36,400 trips taken in 2008, and 33 percent above the recent five year average (2004-2008). The proportion of Washington angler trips taken on charter vessels was 30 percent in 2009, down from 39 percent in 2008, (Figure IV-5 and Table IV-13), and the lowest charter share on record (1979 to the present).

Angler success rates (in terms of retained fish per angler trip) increased to 1.52 in 2009, up from 0.92 in 2008 and 1.28 in 2007. The retention rate averaged 1.49 salmon per trip between 1979 and 1990 and 1.28 salmon per trip since then. Note that these figures do not include angler effort that occurs from the ocean side of the Columbia River jetty, or angler effort in the state managed Area 4B add-on fishery, when open.

In an effort to increase angler participation in non-salmon recreational fishing (e.g., bottomfish trips) and to extend the length of the salmon season, partial-week closures were used in the recreational fishery north of Cape Falcon beginning in 1985. Sunday through Thursday salmon openings were used beginning in 1996 in the Westport and Columbia River port areas. The Neah Bay and La Push areas were generally open seven days a week, until more recently. In 2009, the recreational salmon fishery was open seven-days-per-week in the Columbia River area (south of Leadbetter Point). All open ports north of Leadbetter Point started the year with partial week openings but switched from partial week openings to a seven-day-per-week fishery in mid- to late-July. In 2009, north of Cape Falcon there were 37,200 bottomfish trips, a decrease from the 44,400 trips in 2008 (Table IV-14). The decline was distributed across all port areas.

### ***Buoy 10 and Area 4B Add-On Fisheries***

For anglers fishing from private and charter boats, angler retention rates in the Buoy 10 fishery increased from 0.52 salmon per angler day in 2008 to 0.75 salmon per angler day in 2009. Private and charter boat effort in 2009 was up 124 percent, compared with 2008, to about 72,800 trips (Table IV-15).

In 2000, about 3,400 trips were made in the late-season Area 4B add-on fishery. Since that time there have been no late season Area 4B add-on fisheries (Table IV-15) except in 2008, which had an estimated 782 private trips and no charter trips.

There were numerous other inside recreational salmon fishing opportunities in Puget Sound and coastal streams and estuaries that are not discussed in this chapter of the Review. See Appendix B for estimates of harvest in some of those other fisheries.

## **SALMON FISHERY INCOME IMPACTS AND COMMUNITY DEPENDENCE**

Coastal community income impacts provide information on the effects of fluctuations in salmon harvest on local economies and small businesses. Income impacts are estimated per commercial pound and per

recreational fishing day, and were generated using the Fishery Economic Assessment Model (FEAM). Information on FEAM is available from the Council on request.

Estimated state and local community income impacts of commercial and recreational ocean salmon fisheries and selected state-managed fisheries are shown in Tables IV-16 through IV-20. These impacts represent estimates of total personal income associated with harvesting, processing and first level distribution activities in the commercial and recreational salmon fisheries at the local community (county) and state levels. Income impacts are estimated based on several components: reported landings by area, an inventory of area fleet and processors, estimates of fleet and processor expenditures, surveys of the expenditure patterns of recreational fishers, and local and state level total income coefficients generated by IMPLAN<sup>®</sup> models constructed for each area. In FEAM, most of the benefit of higher than average salmon prices was assumed to go to the harvesters. Commercial ocean harvest not landed in the coastal areas (e.g., landed in Puget Sound ports) was not included in the estimates of coastal community impacts, but was included in the overall estimate of state impacts.

The impacts presented here are estimates of annual trends and are intended to indicate the possible redirection of activity between nonfishing-dependent and fishing-dependent sectors. As such they represent likely upper bounds on the local community and state income impacts generated by West Coast salmon fisheries. All income impact estimates in this review are reported in inflation-adjusted 2009 dollars.

### *West Coast Ocean Fishery Income Impacts*

The total West Coast income impact associated with recreational and commercial ocean salmon fisheries for all three states combined in 2009 was \$17.0 million, which was the second lowest on record. In inflation-adjusted dollars this was 130% above the estimated 2008 level (\$7.4 million) and 95 percent lower than the inflation-adjusted value for 1979 (the highest year in the data time series). The 2009 value was 66 percent below the inflation-adjusted average of \$50.2 million for the previous five years 2004-2008 (Tables IV-16 through IV-18). West Coast income impacts associated with the 2009 non-Indian commercial ocean fishery were \$2.5 million, 40 percent higher than 2008 (\$1.8 million), and 91 percent below the recent five year (2004-2008) average (\$27.3 million), in inflation-adjusted terms;<sup>1/</sup> Income impacts related to the 2009 ocean recreational fishery were estimated at \$14.5 million, 159% above the 2008 level (\$5.6 million), and 37 percent below the 2004-2008 average in inflation-adjusted terms (\$22.9 million). These coastwide values do not reveal the reductions in particular communities compared with averages during the 1980s. Tables IV-16 through IV-18 provide greater detail on the impacts in individual states and port areas along the West Coast.

### *Selected Inside Fisheries*

#### **Columbia River Commercial Fisheries**

For periods in the past, the non-Indian and treaty Indian Columbia River commercial fisheries have generated a substantial amount of income for the Oregon and Washington communities on the Columbia River, an average of \$33.0 million from 1986-1990 (inflation-adjusted). For 2009, income impacts associated with the Columbia River commercial catch (non-Indian and treaty Indian) were estimated at \$12.2 million. The income impacts in 2008 were \$14.8 million and \$7.1 million in 2007 (all values in inflation-adjusted 2009 dollars, Table IV-19).

---

1/ Income impact estimates for the commercial fishery do not include postseason settlement payments fishers may have received from buyers. These postseason settlements may be particularly significant for the California fishery.

### **Buoy 10 and Area 4B Add-On**

The estimated local community income impact associated with the 2009 Buoy 10 recreational fishery was \$2.7 million, slightly over twice the inflation-adjusted 2008 level of \$1.3 million, and 62 percent below the 1987-1990 inflation-adjusted average of \$7.2 million (Table IV-20). There was not a late season Area 4B add-on fishery this year. There was one last year, which was the first since 2000. The local community income impact associated with the area 4B add-on in 2008 was \$30,100. Between 1996 and 2000, the average annual inflation-adjusted total state-level income impact associated with the Area 4B add-on fishery was \$136,200 (Table IV-20).

TABLE IV-1. Average monthly exvessel troll salmon price in dollars per dressed pound for California, Oregon, and Washington in 2009.

Species/Grade	Mar.	Apr.	May	June	July	Aug.	Sept.	Oct.	Nov.	Dec.	Season
<b>CALIFORNIA</b>											
Chinook <sup>a/</sup>	-	-	-	-	-	-	-	-	-	-	-
Coho	-	-	-	-	-	-	-	-	-	-	-
<b>OREGON</b>											
Chinook											
Large (>11 Pounds)	-	-	6.82	5.26	3.20	3.76	3.69	6.24	-	-	5.15
Medium (7-11 Pounds)	-	-	6.52	5.09	3.63	2.93	3.50	5.91	-	-	4.67
Small (<7 Pounds)	-	-	8.00	N/A	3.06	3.38	N/A	4.00	-	-	3.87
Ungraded Chinook	-	-	5.49	5.59	4.06	5.29	3.88	6.45	-	-	5.39
Weighted Average	-	-	6.52	5.30	3.48	3.99	3.66	6.24	-	-	5.10
Mixed Coho	-	-	-	-	1.49	1.80	2.46	2.75	-	-	2.04
<b>WASHINGTON<sup>b/</sup></b>											
Chinook											
Large (>11 Pounds)	-	-	6.62	5.11	4.66	5.10	4.44	-	-	-	5.36
Medium (8-11 Pounds)	-	-	6.56	4.74	3.97	4.61	4.46	-	-	-	5.09
Small (<8 Pounds)	-	-	4.29	3.15	3.66	4.11	3.83	-	-	-	3.85
Ungraded Chinook	-	-	-	-	-	-	-	-	-	-	-
Weighted Average	-	-	6.59	5.02	4.57	5.03	4.46	-	-	-	5.77
Mixed Coho	-	-	-	-	1.49	2.15	2.18	-	-	-	1.91

a/ Chinook salmon typically sold in two size categories. Prices paid in these categories are not extracted from dealer ticket information.

b/ Non-Indian data only.

TABLE IV-2. Troll Chinook and coho landed in California, estimates of exvessel value, and average price (dollars per dressed pound) in nominal and real (inflation adjusted, 2009) dollars.<sup>a/</sup>

Year or Avg.	Chinook				Coho				Total <sup>b/</sup>	
	Nominal Value (\$*1,000)	Real Value (\$*1,000)	Nominal Price Per Pound (\$)	Real Price Per Pound (\$)	Nominal Value (\$*1,000)	Real Value (\$*1,000)	Nominal Price Per Pound (\$)	Real Price Per Pound (\$)	Nominal Value (\$*1,000)	Real Value (\$*1,000)
1979	17,356	43,522	2.53	6.34	2,303	5,775	2.19	5.49	19,659	49,297
1980	12,741	29,280	2.27	5.22	408	938	1.36	3.13	13,149	30,217
1981-1985	10,945	21,285	2.42	4.64	554	1,089	1.94	4.08	11,499	22,374
1986-1990	21,151	34,817	2.56	4.18	490	794	1.36	2.69	21,641	35,611
1991-1995	7,335	10,256	2.28	3.22	143	209	1.25	2.38	7,478	10,465
1996	5,984	7,903	1.44	1.90	-	-	-	-	5,984	7,903
1997	7,288	9,458	1.38	1.79	-	-	-	-	7,288	9,458
1998	3,060	3,927	1.66	2.13	-	-	-	-	3,060	3,927
1999	7,429	9,395	1.93	2.44	-	-	-	-	7,429	9,395
2000	10,304	12,755	2.01	2.49	-	-	-	-	10,304	12,755
2001	4,773	5,778	1.98	2.40	-	-	-	-	4,773	5,778
2002	7,776	9,262	1.55	1.85	-	-	-	-	7,776	9,262
2003	12,181	14,205	1.91	2.23	-	-	-	-	12,181	14,205
2004	17,895	20,292	2.87	3.25	-	-	-	-	17,895	20,292
2005	12,913	14,170	2.97	3.26	-	-	-	-	12,913	14,170
2006	5,350	5,686	5.13	5.45	-	-	-	-	5,350	5,686
2007	7,902	8,164	5.18	5.35	-	-	-	-	7,902	8,164
2008	-	-	-	-	-	-	-	-	-	-
2009	-	-	-	-	-	-	-	-	-	-

a/ These exvessel values do not include the postseason settlement payments some fishers may have received from buyers and therefore may underestimate the true payments received by fishers for their landings. Beginning circa 1999, these postseason settlements are believed to have grown for the California fishery. For 2002, the exvessel value reported here is believed to be under reported by roughly 5% to 10%.

b/ Does not include pink salmon landings, if any.

TABLE IV-3. Troll Chinook and coho landed in Oregon, estimates of exvessel value, and average price (dollars per dressed pound) in nominal and real (inflation adjusted, 2009) dollars.

Year or Avg.	Chinook				Coho				Total <sup>a/</sup>	
	Nominal Value (\$*1,000)	Real Value (\$*1,000)	Nominal Price Per Pound (\$)	Real Price Per Pound (\$)	Nominal Value (\$*1,000)	Real Value (\$*1,000)	Nominal Price Per Pound (\$)	Real Price Per Pound (\$)	Nominal Value (\$*1,000)	Real Value (\$*1,000)
1971-1975	2,036	7,541	0.89	3.35	3,658	13,878	0.64	2.39	5,694	21,418
1976-1980	5,290	14,194	2.17	5.80	6,389	17,667	1.51	4.03	11,679	31,861
1981-1985	3,582	6,929	2.46	4.73	2,248	4,537	1.45	2.79	5,830	11,467
1986-1990	9,381	15,417	2.47	4.03	3,203	5,276	1.54	2.52	12,584	20,693
1991-1995	1,971	2,762	2.24	3.16	326	477	0.64	0.92	2,297	3,239
1996	3,007	3,971	1.56	2.06	-	-	-	-	3,007	3,971
1997	2,469	3,204	1.60	2.08	-	-	-	-	2,469	3,204
1998	2,297	2,948	1.64	2.10	-	-	-	-	2,297	2,948
1999	1,400	1,771	1.94	2.45	1	1	1.03	1.30	1,401	1,772
2000	2,988	3,699	2.02	2.50	75	93	1.06	1.31	3,063	3,792
2001	4,680	5,665	1.61	1.95	41	50	0.79	0.96	4,721	5,715
2002	5,383	6,412	1.54	1.83	8	10	0.75	0.89	5,391	6,422
2003	7,186	8,380	1.97	2.30	36	42	0.85	0.99	7,222	8,422
2004	9,832	11,150	3.45	3.91	86	98	1.24	1.41	9,919	11,248
2005	8,466	9,290	3.17	3.48	37	41	1.87	2.05	8,503	9,331
2006	2,663	2,830	5.48	5.82	38	40	2.90	3.08	2,701	2,870
2007	2,630	2,717	5.66	5.85	193	199	1.90	1.96	2,822	2,916
2008	484	489	7.31	7.39	10	10	2.82	2.85	494	500
2009 <sup>b/</sup>	78	78	5.10	5.10	267	267	2.04	2.04	345	345

a/ Does not include pink salmon landings.

b/ Preliminary.

TABLE IV-4. Non-Indian troll Chinook and coho landed in Washington, estimates of exvessel value, and average price (dollars per dressed pound) in nominal and real (inflation adjusted, 2009) dollars.<sup>a/</sup>

Year or Avg.	Chinook				Coho				Total <sup>b/</sup>	
	Nominal Value (\$*1,000)	Real Value (\$*1,000)	Nominal Price Per Pound (\$)	Real Price Per Pound (\$)	Nominal Value (\$*1,000)	Real Value (\$*1,000)	Nominal Price Per Pound (\$)	Real Price Per Pound (\$)	Nominal Value (\$*1,000)	Real Value (\$*1,000)
1971-1975	2,714	10,181	0.89	3.36	3,060	11,507	0.66	2.50	5,775	21,688
1976-1980	5,313	14,557	2.39	6.35	6,086	16,636	1.67	4.45	11,399	31,193
1981-1985	1,954	3,891	2.46	4.73	1,272	2,543	1.32	2.54	3,225	6,433
1986-1990 <sup>c/</sup>	1,310	2,148	2.61	4.28	360	581	1.62	2.65	1,670	2,729
1991-1995 <sup>d/</sup>	550	789	2.17	3.06	120	172	0.86	1.22	670	962
1996	d/	d/	d/	d/	59	77	0.86	1.14	d/	d/
1997	125	162	1.55	2.01	-	-	-	-	125	162
1998	123	158	1.51	1.94	-	-	-	-	123	158
1999	377	477	1.90	2.40	19	24	0.88	1.11	396	501
2000	224	278	1.71	2.12	34	42	1.09	1.35	258	320
2001	349	422	1.44	1.74	34	41	0.69	0.84	383	464
2002	756	901	1.11	1.32	2	2	1.58	1.88	758	903
2003	951	1,109	1.15	1.34	40	47	0.74	0.86	991	1,156
2004	1,079	1,224	2.14	2.43	106	120	1.16	1.32	1,185	1,344
2005	1,273	1,397	2.70	2.96	16	18	1.65	1.81	1,290	1,415
2006	1,029	1,093	4.64	4.93	16	17	1.69	1.80	1,045	1,111
2007	905	934	4.90	5.06	48	50	1.46	1.51	953	984
2008	673	681	6.73	6.81	36	36	2.49	2.52	709	717
2009	893	893	5.76	5.76	276	276	2.02	2.02	1,169	1,169

a/ All values in this table are based on preliminary information available at the start of each year's salmon review.

b/ Does not include pink salmon landings.

c/ There was no legal coho fishery in 1988. The value used in this average for 1988 is for landings of fish caught south of Cape Falcon and seizures of illegal fish.

d/ In 1994-1996 Chinook were caught off Oregon and landed in Washington. Value information was not provided to preserve confidentiality.

TABLE IV-5. Non-Indian troll pink salmon landed in Oregon and Washington, estimates of exvessel value, and average price (dollars per dressed pound) in nominal and real (inflation adjusted, 2009) dollars.

Year or Avg. <sup>a/</sup>	Oregon				Washington				Total <sup>a/</sup>	
	Nominal Value (\$*1,000)	Real Value (\$*1,000)	Nominal Price Per Pound (\$)	Real Price Per Pound (\$)	Nominal Value (\$*1,000)	Real Value (\$*1,000)	Nominal Price Per Pound (\$)	Real Price Per Pound (\$)	Nominal Value (\$*1,000)	Real Value (\$*1,000)
1976-1980	167	468	0.75	2.00	1,200	3,175	0.54	1.45	1,367	3,644
1981-1985	129	253	0.74	1.43	287	571	0.41	0.80	416	824
1986-1990	41	69	0.77	1.26	57	90	0.66	1.08	98	160
1991-1995	1	2	0.88	1.23	38	54	0.64	0.90	39	57
1997	b/	b/	0.56	0.73	b/	b/	0.20	0.26	b/	b/
1999	b/	b/	0.67	0.85	b/	b/	0.38	0.48	b/	b/
2001	1	1	0.58	0.70	b/	b/	0.22	0.27	1	1
2003	b/	b/	0.85	0.99	b/	b/	0.30	0.35	b/	b/
2005	b/	b/	1.25	1.37	b/	b/	0.52	0.57	b/	b/
2007	b/	b/	1.03	1.06	b/	b/	0.33	0.34	b/	b/
2009 <sup>c/</sup>	b/	b/	1.03	1.03	b/	b/	0.33	0.33	b/	b/

a/ Odd year averages.

b/ Less than \$500.

c/ Preliminary.

TABLE IV-6. Pounds of salmon landed by the commercial troll ocean fishery for major California port areas.<sup>a/b/</sup>

Year or Avg.	Crescent City	Eureka	Fort Bragg	San Francisco	Monterey	State Total
<b>CHINOOK (thousands of dressed pounds)</b>						
1976-1980	393	1,403	1,449	1,733	889	5,867
1981-1985	350	428	1,128	1,806	742	4,454
1986-1990	155	405	2,299	3,648	1,592	8,097
1991-1995	2	25	183	1,893	1,326	3,429
1996	3	92	278	1,695	2,046	4,113
1997	c/	14	35	2,711	2,488	5,248
1998	1	22	35	1,081	709	1,847
1999	3	27	30	2,681	1,105	3,846
2000	3	20	354	2,607	2,148	5,131
2001	3	61	192	1,735	418	2,409
2002	54	108	872	3,060	912	5,008
2003	38	7	3,096	2,753	498	6,392
2004	308	65	1,292	3,712	853	6,230
2005	25	77	889	2,258	1,098	4,347
2006	-	-	273	684	87	1,043
2007	34	81	357	888	165	1,525
2008	-	-	-	-	-	-
2009	-	-	-	-	-	-
<b>COHO (thousands of dressed pounds)</b>						
1976-1980	360	391	277	109	48	1,184
1981-1985	89	104	89	54	9	345
1986-1990	22	43	136	53	9	262
1991-1995	c/	4	11	56	23	94
1996	-	-	-	-	-	-
1997	-	-	-	-	-	-
1998	-	-	-	-	-	-
1999	-	-	-	-	-	-
2000	-	-	-	-	-	-
2001	-	-	-	-	-	-
2002	-	-	-	-	-	-
2003	-	-	-	-	-	-
2004	-	-	-	-	-	-
2005	-	-	-	-	-	-
2006	-	-	-	-	-	-
2007	-	-	-	-	-	-
2008	-	-	-	-	-	-
2009	-	-	-	-	-	-

a/ The major port areas listed may include smaller ports as follows: Crescent City includes only Crescent City; Eureka includes Trinidad and Humboldt Bay; Fort Bragg includes Shelter Cove, Noyo Harbor, Mendocino, and Pt. Arena; San Francisco includes Bodega Bay, Sausalito, Berkeley, and Half Moon Bay; Monterey includes Santa Cruz, Moss Landing, Morro Bay, Avila, and all ports south of Pt. Conception.

b/ Prior to 2005 landings were based on catch area, not port of landing.

c/ Less than 500 pounds.

TABLE IV-7. Pounds of salmon landed by the commercial troll ocean fishery for major Oregon port areas.<sup>a/</sup>

Year or Avg.	Astoria	Tillamook	Newport	Coos Bay	Brookings	State Total
<b>CHINOOK (thousands of dressed pounds)</b>						
1976-1980	171	118	530	908	700	2,427
1981-1985	92	45	271	638	386	1,432
1986-1990	52	264	829	2,118	468	3,731
1991-1995	7	86	580	235	31	940
1996	21	125	1,219	417	142	1,926
1997	3	32	1,053	381	73	1,542
1998	b/	66	953	326	52	1,398
1999	13	32	194	403	80	721
2000	89	97	532	648	114	1,481
2001	73	223	1,673	776	152	2,897
2002	330	275	1,442	1,223	218	3,488
2003	265	245	1,634	1,353	142	3,639
2004	134	113	1,121	1,214	267	2,850
2005	130	214	1,034	1,054	239	2,671
2006	99	67	218	56	45	486
2007	22	37	76	232	98	464
2008	39	19	-	-	8	66
2009 <sup>c/</sup>	7	4	-	-	5	15
<b>COHO (thousands of dressed pounds)</b>						
1976-1980	385	660	1,190	1,661	357	4,252
1981-1985	133	293	451	550	111	1,537
1986-1990	73	473	693	648	69	1,957
1991-1995	17	93	110	104	1	325
1996	-	-	-	-	-	-
1997	-	-	-	-	-	-
1998	-	-	-	-	-	-
1999	1	-	-	-	-	1
2000	71	-	-	-	-	71
2001	50	b/	2	-	-	52
2002	6	5	-	-	-	11
2003	32	11	-	-	-	43
2004	47	22	-	-	-	70
2005	9	11	-	-	-	20
2006	8	5	-	-	-	13
2007	37	34	13	14	3	101
2008	3	1	-	-	-	4
2009 <sup>c/</sup>	48	43	35	5	b/	131

a/ The major port areas listed include smaller ports as follows: Astoria also includes Gearhart/Seaside and Cannon Beach; Tillamook also includes Garibaldi, Netarts, Pacific City, and Nehalem Bay; Newport also includes Depoe Bay, Siletz Bay, Salmon River, and Waldport; Coos Bay also includes Florence, Winchester Bay, Charleston, and Bandon; Brookings also includes Port Orford and Gold Beach.

b/ Less than 500 pounds.

c/ Preliminary.

TABLE IV-8. Pounds of salmon landed by the non-Indian commercial troll ocean fishery for major Washington port areas.<sup>a/b/</sup>

Year or Avg.	Neah Bay	La Push	Westport	Ilwaco	Coastal Community		State Total <sup>c/</sup>
					Total	Puget Sound	
<b>CHINOOK (thousands of dressed pounds)</b>							
1976-1980	288	421	919	261	1,889	426	2,315
1981-1985	88	32	370	74	564	124	689
1986-1990	71	17	234	48	371	122	493
1991	128	7	127	14	276	32	308
1992	160	46	232	10	447	58	507
1993	122	35	132	2	291	41	332
1994 <sup>d/</sup>	-	-	-	-	-	7	7
1995 <sup>d/</sup>	-	-	3	-	3	12	15
1996 <sup>d/</sup>	-	-	4	1	5	13	18
1997	20	e/	45	-	65	15	80
1998	30	-	34	-	64	18	82
1999	62	2	66	3	133	65	198
2000	85	1	38	8	131	e/	131
2001	97	-	138	6	241	-	241
2002	262	33	322	61	678	-	678
2003	470	67	243	29	810	12	821
2004	250	74	158	15	497	7	504
2005	170	100	181	20	471	e/	471
2006	86	64	40	26	216	5	222
2007	38	31	105	8	182	2	184
2008	20	17	49	13	99	1	100
2009	31	25	92	3	153	2	155
<b>COHO (thousands of dressed pounds)</b>							
1976-1980	600	786	1,066	678	3,130	496	3,626
1981-1985	133	63	277	142	616	128	744
1986-1990	70	19	97	53	239	19	259
1991	87	16	126	45	274	31	304
1992	25	13	21	4	63	12	75
1993	11	7	43	2	63	3	66
1994	-	-	-	-	-	-	-
1995	84	18	7	-	109	2	111
1996	45	1	23	-	68	e/	68
1997	-	-	-	-	-	-	-
1998	-	-	-	-	-	-	-
1999	7	1	4	1	13	9	21
2000	-	-	15	16	31	e/	31
2001	2	-	39	9	49	-	49
2002	-	-	e/	1	1	-	1
2003	11	12	21	8	52	2	54
2004	12	20	53	4	89	1	91
2005	2	1	3	5	10	-	10
2006	3	3	3	1	10	e/	10
2007	3	3	9	17	33	-	33
2008	2	3	8	1	14	e/	14
2009	29	34	54	14	131	5	136

a/ All values in this table are based on preliminary information available at the start of each year's salmon review.

b/ The major port areas listed may include smaller ports as follows: Neah Bay includes only Neah Bay; La Push also includes Kalaloch; Westport also includes Aberdeen, Bay City, Copalis Beach, Hoquiam, Moclips, Taholah, Bay Center, Grayland Beach, Raymond, South Bend, and Tokeland; Ilwaco also includes Long Beach, Nahcotta, Naselle, and all Columbia River Ports; Puget Sound includes all Puget Sound ports east of Neah Bay.

c/ State total includes landings where port of landing is not specified.

d/ There was no ocean commercial fishery for Chinook north of Cape Falcon; however, Chinook were caught off Oregon and landed in Washington.

e/ Less than 500 pounds.

TABLE IV-9. Exvessel values (inflation adjusted, 2009 dollars) of inriver commercial harvest of Columbia River salmon.<sup>af</sup>  
 (Page 1 of 2)

	Non-Indian Gillnet <sup>b/</sup>					Treaty Indian <sup>c/</sup> - All Gears					Columbia River Total By State		
	Chinook					Chinook							
	Fall					Fall							
	Spring	Brights <sup>d/</sup>	Tules	Coho	Chum	TOTAL	Spring	Brights <sup>d/</sup>	Tules	Coho		Chum	TOTAL
<b>Oregon</b>													
Average Price Per Landed Pound <sup>e/</sup> (dollars)													
1987-2003	4.18	1.43	0.39	1.25	0.54		4.34	1.36	0.35	0.95	-		
2004	4.22	1.55	0.25	1.02	0.28		2.10	1.28	0.11	0.67	-		
2005	3.74	1.78	0.29	1.17	0.34		-	1.14	0.19	1.02	-		
2006	4.97	2.27	0.30	1.39	0.28		3.19	1.63	0.28	1.33	-		
2007	5.57	2.92	0.05	1.67	0.77		3.87	2.70	0.03	1.11	-		
2008 <sup>g/</sup>	6.25	2.53	0.58	1.33	0.66		4.69	2.59	0.46	1.17	0.91		
2009 <sup>g/</sup>	4.50	2.06	0.54	1.21	0.52		3.41	1.40	0.36	0.92	-		
Exvessel Value (thousands of dollars)													
1987-2003	502	1,719	101	1,102	2	3,426	6	706	18	6	-	735	4,161
2004	1,164	635	56	771	f/	2,626	168	610	34	19	-	831	3,457
2005	345	485	38	927	f/	1,794	-	228	12	1	-	241	2,036
2006	653	677	19	666	f/	2,016	f/	336	3	15	-	354	2,370
2007	790	365	1	318	f/	1,474	65	373	1	15	-	455	1,929
2008 <sup>g/</sup>	723	1,043	65	678	f/	2,509	326	948	59	51	f/	1,384	3,893
2009 <sup>g/</sup>	437	899	90	1,023	f/	2,449	142	563	36	24	-	765	3,214
Pounds (thousands)													
1987-2003	116	749	156	785	2	1,807	3	337	62	5	-	407	2,213
2004	276	409	224	755	f/	1,664	80	476	299	29	-	884	2,548
2005	92	273	132	789	f/	1,286	-	200	67	1	-	267	1,554
2006	131	298	65	478	f/	971	f/	206	11	12	-	229	1,200
2007	142	135	f/	189	f/	466	17	138	25	14	-	194	660
2008 <sup>g/</sup>	116	413	112	512	f/	1,152	70	366	129	44	f/	609	1,761
2009 <sup>g/</sup>	97	436	168	846	f/	1,547	42	403	100	26	-	571	2,118

TABLE IV-9. Exvessel values (inflation adjusted, 2009 dollars) of inriver commercial harvest of Columbia River salmon.<sup>a/</sup> (Page 2 of 2)

	Non-Indian Gillnet <sup>b/</sup>						Treaty Indian <sup>c/</sup> - All Gears						Columbia River Total By State
	Chinook			Chinook			Chinook			Chinook			
	Fall			Fall			Fall			Fall			
	Spring	Brights <sup>d/</sup>	Tules	Coho	Chum	TOTAL	Spring	Brights <sup>d/</sup>	Tules	Coho	Chum	TOTAL	
<b>Washington<sup>g/h/i/</sup></b>													
Average Price Per Landed Pound <sup>e/</sup> (dollars)													
1987-2003	5.12	1.33		1.25	0.47		3.70	0.94		0.88	-		
2004	4.46	1.46		1.07	0.28	-	1.78	0.61		0.25	-		
2005	3.93	1.53		1.13	0.88	-	1.85	0.56		0.33	-		
2006	3.90	2.05		1.41	-	-	2.50	1.49		0.60	0.53		
2007	6.93	2.63		1.30	1.00	-	4.60	1.41		0.83	0.93		
2008	6.79	2.58		1.27	0.98	-	4.50	1.38		0.81	0.91		
2009	5.29	1.78		1.13	0.59	-	3.01	0.93		0.57	-		
Exvessel Value (thousands of dollars)													
1987-2003	240	664		457	1	1,347	57	1,081		16	-	1,150	2,498
2004	308	495		394	f/	1,197	187	493		11	-	691	1,888
2005	242	359		215	f/	816	124	786		11	-	921	1,737
2006	340	446		293	-	1,079	450	1,346		27	f/	1,823	2,902
2007	131	238		258	f/	627	f/	1,281		54	f/	1,335	1,963
2008	318	514		279	f/	1,112	981	1,613		149	f/	2,743	3,855
2009	314	537		296	f/	1,148	617	818		25	-	1,460	2,608
Pounds (thousands)													
1987-2003	46	333		369	1	747	37	914		18	-	966	1,713
2004	69	338		370	f/	777	105	806		43	-	954	1,731
2005	62	235		191	f/	487	67	1,404		34	-	1,504	1,992
2006	87	218		207	-	512	180	905		45	f/	1,130	1,642
2007	18	91		154	f/	263	f/	638		66	f/	705	968
2008	47	199		219	f/	466	218	1,172		184	f/	1,574	2,040
2009	59	302		262	1	624	205	880		44	-	1,129	1,753

a/ Excluding pink, sockeye, and steelhead.

b/ Mainstem below Bonneville and select areas (Youngs Bay, Tongue Point, Blind Slough, and Deep River).

c/ Treaty Indian landings and values do not include direct sales to consumers.

d/ For Washington, this column includes fall brights, tules, and jacks. Price changes may reflect a change in the mix of brights, tules, and jacks rather than annual price changes.

e/ Gillnet exvessel salmon prices are recorded in round weight and therefore are not strictly comparable to exvessel troll prices.

f/ Less than \$500 or 500 pounds.

g/ Preliminary. (All Washington values in this table are based on preliminary information available when each year's Salmon Review is drafted.)

h/ Washington prices for years prior to 2000 are based on a combination of Washington and Oregon value information.

i/ Treaty Indian values are primarily mainstem Columbia set gillnet but also include Klickitat dipnet, Drano Lake (Little White Salmon River mouth), and Priest Rapids Pool fisheries.

TABLE IV-10. California, Oregon, and Washington ocean recreational salmon effort in thousands of angler trips and catch in thousands of fish by boat type. (Page 1 of 2)

Year or Avg.	Angler Trips		Chinook Catch <sup>a/</sup>		Coho Catch <sup>a/</sup>	
	Charter	Private	Charter	Private	Charter	Private
<b>CALIFORNIA</b>						
1981-1985	68.9	78.1	74.6	34.4	1.5	18.3
1986-1990	95.9	144.8	100.1	66.3	5.3	35.1
1991-1995	81.7	131.8	85.9	83.0	3.8	18.7
1996	84.6	140.9	72.9	91.2	b/	0.6
1997	102.6	131.7	122.3	106.6	b/	0.5
1998	67.0	85.0	59.7	62.3	b/	0.1
1999	62.6	84.4	40.5	47.4	b/	0.6
2000	94.0	120.4	91.9	94.0	b/	0.4
2001	69.9	95.2	43.2	55.6	0.1	1.2
2002	86.6	123.4	85.1	96.9	b/	0.8
2003	59.4	75.3	48.3	46.4	0.1	0.6
2004	97.7	121.0	124.7	96.5	b/	1.4
2005	69.1	103.0	61.3	81.9	b/	0.7
2006	44.9	81.6	35.3	61.0	b/	1.6
2007	31.4	74.5	12.4	35.4	b/	0.7
2008	0.1	0.3	0.0	b/	-	-
2009 <sup>c/</sup>	0.6	4.7	0.1	0.6	-	b/
<b>OREGON<sup>d/e/</sup></b>						
1979	73.7	187.7	5.4	13.3	59.8	101.8
1980	79.0	218.9	5.1	11.9	98.3	207.5
1981-1985	45.7	187.9	6.2	26.9	48.0	117.6
1986-1990	56.5	184.6	7.0	28.8	71.6	148.4
1991-1995	18.0	81.8	1.3	8.0	27.1	76.2
1996	5.6	38.3	1.2	10.1	3.0	4.2
1997	3.9	26.4	1.5	6.2	2.4	3.6
1998	1.8	24.2	0.5	3.6	0.5	1.8
1999	5.5	43.9	0.9	6.9	3.4	10.3
2000	9.8	68.7	3.6	21.8	7.5	25.7
2001	18.2	102.3	6.4	20.8	19.3	75.0
2002	15.7	91.9	7.9	39.5	9.0	27.5
2003	23.4	121.1	8.8	31.8	23.7	90.0
2004	21.1	124.6	14.6	41.8	13.1	58.8
2005	9.9	66.1	4.5	23.4	3.1	10.6
2006	8.0	54.4	1.5	10.1	3.6	12.0
2007	11.4	76.9	0.6	6.4	10.6	50.1
2008	1.9	28.5	0.2	1.4	1.0	11.1
2009 <sup>c/</sup>	12.6	71.9	0.2	1.3	14.2	75.4

TABLE IV-10. California, Oregon, and Washington ocean recreational salmon effort in thousands of angler trips and catch in thousands of fish by boat type. (Page 2 of 2)

Year or Avg.	Angler Trips		Chinook Catch <sup>a/</sup>		Coho Catch <sup>a/</sup>	
	Charter	Private	Charter	Private	Charter	Private
	<b>WASHINGTON<sup>d/g/</sup></b>					
1979	220.8	89.8	61.1	15.7	227.9	62.4
1980	193.9	86.2	41.1	12.5	288.4	73.1
1981-1985	102.0	69.7	42.6	13.8	113.3	69.2
1986-1990	53.5	59.4	16.0	10.0	78.0	77.6
1991-1995	28.0	45.1	4.5	4.2	41.5	54.8
1996	15.3	23.5	b/	0.2	24.5	24.4
1997	12.5	15.1	1.7	2.3	12.5	12.8
1998	5.5	6.8	1.1	0.9	5.6	7.1
1999	17.5	29.9	5.7	4.1	16.3	23.7
2000	17.1	27.9	5.1	3.4	27.9	35.8
2001	41.2	72.4	11.9	10.8	66.2	98.2
2002	37.0	57.4	30.9	27.0	30.4	43.7
2003	44.5	75.5	16.0	18.1	53.4	84.9
2004	36.5	73.1	10.3	14.6	37.6	75.1
2005	31.7	58.9	15.9	20.4	19.2	32.6
2006	24.5	39.1	4.0	6.7	16.2	19.9
2007	26.7	45.9	3.1	5.9	33.7	50.1
2008	14.2	22.2	6.0	8.6	8.3	10.5
2009 <sup>e/</sup>	29.4	69.5	3.1	9.2	47.9	90.0

a/ Catch numbers may include some illegal harvest.

b/ Fewer than 50 fish.

c/ Preliminary.

d/ Salmon data from surveyed ports only. These generally include Astoria, Garibaldi, Depoe Bay, Newport, Winchester Bay, Coos Bay, and Brookings. Since 1981, Pacific City and Florence have also been included. Gold Beach data are included from 1981-1987. Astoria was not included in 1994.

e/ Numbers do not include angling from the Columbia River jetty.

f/ Numbers do not include angling from the Columbia River jetty or from the late-season state waters Area 4B fishery.

g/ Values for 1982-1985 include some inriver Columbia River fishing after closure of the ocean fishery.

TABLE IV-11. Estimates of California recreational ocean salmon angler trips (thousands) by port area and boat type.

Year or Avg.	Crescent City	Eureka	Fort Bragg	San Francisco	Monterey	State Total
<b>CHARTER TRIPS</b>						
1976-1980	1.5	1.2	2.4	63.5	4.0	72.7
1981-1985	0.7	1.3	1.8	62.1	3.0	68.9
1986-1990	1.0	3.5	4.0	74.3	13.1	95.9
1991-1995	0.4	0.8	2.8	55.7	22.0	81.7
1996	a/	0.6	5.1	57.6	21.4	84.6
1997	-	0.8	2.2	69.1	30.6	102.7
1998	-	0.3	2.7	44.2	19.7	66.9
1999	-	0.4	2.3	51.0	8.9	62.6
2000	0.1	1.6	8.6	53.9	29.9	94.0
2001	a/	1.4	9.7	43.4	15.4	69.9
2002	-	1.6	10.7	54.9	19.4	86.6
2003	-	1.1	8.2	38.7	11.4	59.4
2004	0.1	1.9	10.7	63.4	21.5	97.7
2005	-	0.9	8.9	45.8	13.5	69.1
2006	-	0.7	6.9	29.2	8.0	44.9
2007	-	1.6	5.4	20.9	3.5	31.4
2008	-	-	0.1	-	-	0.1
2009 <sup>b/</sup>	-	0.6	-	-	-	0.6
<b>PRIVATE TRIPS</b>						
1976-1980	18.4	22.7	9.3	34.4	6.0	90.8
1981-1985	22.4	21.8	7.8	16.8	9.3	78.1
1986-1990	38.6	34.4	11.4	24.3	36.1	144.8
1991-1995	13.9	14.0	17.6	37.1	49.3	131.9
1996	11.3	13.6	26.2	46.6	43.2	140.9
1997	6.6	11.6	18.0	42.1	53.5	131.7
1998	3.3	6.4	5.7	36.9	32.7	85.0
1999	5.8	11.6	7.9	38.8	20.3	84.4
2000	7.2	11.5	17.0	29.8	54.9	120.4
2001	8.6	14.7	21.1	28.1	22.7	95.2
2002	3.9	16.1	21.1	33.9	48.5	123.4
2003	2.2	12.5	15.5	27.9	17.1	75.3
2004	3.1	20.5	19.8	42.7	35.0	121.0
2005	2.5	13.9	15.4	39.0	32.2	103.0
2006	1.5	14.2	14.1	32.1	19.7	81.6
2007	2.1	16.8	11.7	22.2	21.7	74.5
2008	-	-	0.3	-	-	0.3
2009 <sup>b/</sup>	1.1	3.6	-	-	-	4.7
<b>TOTAL TRIPS</b>						
1976-1980	20.0	23.9	11.7	97.9	10.0	163.5
1981-1985	23.1	23.1	9.6	78.9	12.2	147.0
1986-1990	39.6	37.9	15.4	98.6	49.2	240.7
1986-1990	14.3	14.8	20.4	92.8	71.2	213.6
1996	11.3	14.2	31.3	104.2	64.5	225.4
1997	6.6	12.4	20.2	111.2	84.0	234.4
1998	3.3	6.7	8.4	81.1	52.4	151.9
1999	5.8	12.0	10.2	89.8	29.2	147.0
2000	7.2	13.1	25.6	83.7	84.8	214.4
2001	8.6	16.0	30.8	71.5	38.2	165.1
2002	3.9	17.7	31.8	88.8	67.9	210.1
2003	2.2	13.6	23.7	66.6	28.5	134.6
2004	3.2	22.4	30.6	106.1	56.5	218.7
2005	2.5	14.8	24.3	84.8	45.7	172.1
2006	1.5	15.0	21.0	61.4	27.7	126.5
2007	2.1	18.4	17.1	43.1	25.2	105.9
2008	-	-	0.4	-	-	0.4
2009 <sup>b/</sup>	1.1	4.3	-	-	-	5.4

a/ Fewer than 50 angler trips.

b/ Preliminary.

TABLE IV-12. Estimates of Oregon recreational ocean salmon angler trips (thousands) by port area and boat type.

Year or Avg.	Astoria	Tillamook	Newport	Coos Bay	Brookings	State Total
<b>CHARTER TRIPS</b>						
1979	18.5	2.8	26.7	22.7	3.0	73.7
1980	26.3	3.7	26.7	19.6	2.8	79.1
1981-1985	10.3	3.0	17.2	11.9	3.3	45.7
1986-1990	7.1	5.3	27.5	13.0	3.6	56.5
1991-1995 <sup>a/</sup>	4.3	1.6	7.9	3.5	0.7	18.0
1996	1.9	0.8	2.1	0.1	0.6	5.6
1997	1.3	0.3	1.8	-	0.5	3.9
1998	0.4	0.1	0.8	0.2	0.3	1.8
1999	1.7	0.3	2.3	0.5	0.7	5.5
2000	1.2	0.6	4.8	2.3	0.8	9.8
2001	4.3	1.4	8.8	3.0	0.7	18.2
2002	3.1	1.6	7.1	3.5	0.3	15.7
2003	3.9	2.0	13.0	4.0	0.5	23.4
2004	3.0	2.5	11.1	3.8	0.6	21.1
2005	2.3	1.0	3.7	2.6	0.3	9.9
2006	2.1	0.6	3.0	2.0	0.3	8.0
2007	2.6	1.1	5.6	1.9	0.2	11.4
2008	0.7	0.1	0.9	0.1	0.1	1.9
2009 <sup>b/</sup>	2.7	1.3	8.1	0.3	0.2	12.6
<b>PRIVATE TRIPS</b>						
1979	24.3	16.3	45.4	52.9	48.8	187.7
1980	20.1	29.3	56.6	65.2	47.7	218.9
1981-1985	15.6	27.1	40.4	51.8	53.0	187.9
1986-1990	10.6	23.7	47.1	48.4	54.8	184.5
1991-1995 <sup>a/</sup>	8.5	12.0	17.0	22.4	22.0	82.0
1996	3.7	7.5	0.6	3.8	22.7	38.3
1997	2.3	3.4	0.6	3.9	16.1	26.4
1998	1.7	5.9	0.5	2.2	13.8	24.2
1999	5.7	10.9	5.0	7.1	15.1	43.8
2000	7.2	10.9	8.2	21.2	21.2	68.7
2001	19.0	15.1	14.8	28.1	25.4	102.4
2002	9.0	22.8	10.9	29.9	19.4	91.9
2003	15.4	26.0	26.5	38.9	14.3	121.1
2004	15.6	26.8	27.9	36.7	17.7	124.6
2005	11.0	11.1	9.7	22.1	12.3	66.1
2006	6.2	15.3	7.4	15.2	10.4	54.4
2007	9.8	20.0	15.2	21.0	10.9	76.9
2008	2.9	9.0	4.6	7.3	4.7	28.5
2009 <sup>b/</sup>	9.5	21.1	21.5	14.1	5.8	71.9
<b>TOTAL TRIPS</b>						
1979	42.8	19.1	72.1	75.6	51.8	261.4
1980	46.4	33.0	83.3	84.8	50.5	298.0
1981-1985	26.0	30.0	57.5	63.7	56.3	233.5
1986-1990	17.7	29.0	74.6	61.4	58.4	241.0
1991-1995 <sup>a/</sup>	12.8	13.6	24.9	26.0	22.7	100.0
1996	5.6	8.3	2.7	3.9	23.3	43.9
1997	3.6	3.7	2.4	3.9	16.6	30.3
1998	2.1	6.0	1.3	2.4	14.1	26.0
1999	7.4	11.2	7.3	7.6	15.8	49.3
2000	8.4	11.5	13.0	23.5	22.0	78.5
2001	23.3	16.5	23.6	31.1	26.1	120.6
2002	12.1	24.4	18.1	33.4	19.7	107.6
2003	19.3	28.0	39.6	42.9	14.8	144.5
2004	18.6	29.3	39.0	40.5	18.3	145.7
2005	13.3	12.1	13.4	24.6	12.6	76.0
2006	8.2	15.9	10.4	17.2	10.6	62.3
2007	12.4	21.0	20.8	23.0	11.1	88.3
2008	3.7	9.1	5.4	7.4	4.8	30.4
2009 <sup>b/</sup>	12.3	22.4	29.6	14.4	6.0	84.6

a/ The fishery north of Cape Falcon was closed in 1994, and it is assumed that no trips were taken out of Astoria into the south of Cape Falcon area. No samplers were stationed in Astoria.

b/ Preliminary.

TABLE IV-13. Estimates of Washington recreational ocean salmon angler trips (thousands) by port area and boat type.

Year or Avg.	Neah Bay <sup>a/</sup>	La Push	Westport	Ilwaco <sup>b/</sup>	State Total
<b>CHARTER TRIPS</b>					
1984 <sup>c/</sup>	0.3	-	11.6	18.0	29.9
1985 <sup>c/</sup>	2.0	-	42.2	20.7	64.9
1986-1990	2.0	-	35.7	15.9	53.5
1991-1995	0.7	0.1	19.4	7.9	28.0
1996	0.2	d/	10.3	4.8	15.3
1997	0.1	0.1	10.0	2.4	12.5
1998	-	-	4.5	1.1	5.5
1999	0.5	0.1	11.5	5.5	17.5
2000	0.7	0.1	12.2	4.1	17.1
2001	1.4	0.3	25.6	13.9	41.2
2002	1.5	0.4	24.5	10.6	37.0
2003	2.0	0.9	27.3	14.3	44.5
2004	1.9	0.6	22.5	11.4	36.5
2005	1.2	0.6	20.5	9.4	31.7
2006	0.5	0.5	15.4	8.0	24.5
2007	0.6	0.4	15.7	10.1	26.7
2008	0.3	0.2	9.9	3.7	14.2
2009 <sup>e/</sup>	0.5	0.7	18.5	9.7	29.4
<b>PRIVATE TRIPS</b>					
1984 <sup>c/</sup>	8.3	0.2	2.3	36.0	46.8
1985 <sup>c/</sup>	15.2	1.5	13.7	19.4	49.8
1986-1990	16.9	2.5	16.6	23.4	59.4
1991-1995	16.4	2.8	18.5	25.4	63.1
1996	9.1	1.3	5.2	7.9	23.5
1997	2.8	0.9	7.3	4.1	15.1
1998	-	0.6	3.5	2.6	6.8
1999	7.6	2.9	7.6	11.8	29.9
2000	7.3	1.8	7.7	11.1	27.9
2001	16.6	3.1	24.1	28.7	72.4
2002	12.2	3.0	16.9	25.3	57.4
2003	18.4	3.5	20.7	32.9	75.5
2004	24.2	3.9	15.7	29.3	73.1
2005	17.2	4.4	14.7	22.6	58.9
2006	12.9	3.6	9.1	13.5	39.1
2007	12.8	2.9	10.2	20.0	45.9
2008	5.3	1.9	8.8	6.3	22.2
2009 <sup>e/</sup>	16.0	4.4	19.3	29.8	69.5
<b>TOTAL TRIPS</b>					
1984 <sup>c/</sup>	8.6	0.2	13.9	54.0	76.7
1985 <sup>c/</sup>	17.2	1.5	55.9	40.1	114.7
1986-1990	18.9	2.5	52.3	39.3	113.0
1991-1995	17.1	2.9	37.9	33.3	91.1
1996	9.3	1.3	15.5	12.7	38.8
1997	2.9	0.9	17.3	6.5	27.5
1998	-	0.6	8.0	3.7	12.3
1999	8.1	3.0	19.1	17.3	47.4
2000	7.9	2.0	19.8	15.2	45.0
2001	17.9	3.4	49.7	42.5	113.6
2002	13.7	3.4	41.4	35.9	94.4
2003	20.4	4.4	48.0	47.1	120.0
2004	26.1	4.6	38.2	40.6	109.5
2005	18.5	4.9	35.2	32.1	90.6
2006	13.4	4.1	24.5	21.5	63.6
2007	13.4	3.3	25.9	30.1	72.7
2008	5.6	2.1	18.7	10.0	36.4
2009 <sup>e/</sup>	16.5	5.1	37.8	39.5	98.9

a/ Does not include effort from the late-season state water Area 4B fishery, when open.

b/ Does not include effort from the Columbia River Jetty.

c/ Values for 1984 and 1985 include some Columbia River fishing after closure of the ocean fishery.

d/ Fewer than 50 angler trips.

e/ Preliminary.

TABLE IV-14. Oregon and Washington recreational salmon, bottomfish, and sturgeon angler trips (thousands) by ocean port area and boat type for the area north of Cape Falcon. (Page 1 of 3)

Year	Columbia River and Buoy 10					Westport			La Push			Neah Bay and Area 4B Add-On		
	Charter	Private	Subtotal	Jetty	Total	Charter	Private	Total	Charter	Private	Total	Charter	Private	Total
<b>SALMON EFFORT</b>														
1984	NA	NA	-	NA	54.0	11.6	2.3	13.9	0.0	0.2	0.2	0.3	8.3	8.6
1985	NA	NA	-	NA	90.3	42.2	13.7	55.9	0.0	1.5	1.5	2.0	15.2	17.2
1986	NA	NA	-	NA	144.3	36.6	14.8	51.4	0.0	1.7	1.7	2.4	17.4	19.8
1987	39.5	130.0	169.5	12.4	181.9	34.1	9.8	43.9	0.0	2.0	2.0	1.9	17.8	19.7
1988	34.5	154.4	188.9	16.9	205.8	23.5	13.9	37.4	0.0	2.8	2.8	2.0	14.8	16.8
1989	40.4	169.2	209.6	22.9	232.5	40.8	18.7	59.5	0.0	1.6	1.6	2.8	25.5	28.3
1990	32.8	128.7	161.5	5.7	167.2	43.4	25.9	69.3	0.0	4.2	4.2	3.0	30.8	33.8
1991	37.9	172.7	210.6	35.5	246.1	28.6	24.2	52.8	0.2	3.3	3.5	1.9	23.5	25.4
1992	22.3	116.6	138.9	28.4	167.3	28.1	25.6	53.7	0.2	2.3	2.5	1.1	18.6	19.7
1993	20.2	103.3	123.5	24.6	148.1	27.4	23.5	50.9	0.1	2.8	2.9	1.6	25.7	27.3
1994	0.5	6.3	6.8	3.6	10.4	-	-	-	-	-	-	-	-	-
1995	9.0	43.4	52.4	8.5	60.9	12.7	9.0	21.7	0.1	1.4	1.5	0.3	9.2	9.5
1996	7.3	26.8	34.1	7.5	41.6	10.3	5.2	15.5	a/	1.3	1.3	0.3	10.6	10.9
1997	8.4	53.0	61.3	7.4	68.7	10.0	7.3	17.3	0.1	0.9	0.9	0.2	4.6	4.8
1998	3.2	30.7	33.9	3.6	37.5	4.5	3.5	8.0	0.0	0.6	0.6	0.1	6.3	6.4
1999	8.7	63.9	72.6	6.2	78.8	11.5	7.6	19.1	0.1	2.9	2.9	0.5	7.6	8.1
2000	9.8	82.2	92.0	7.0	99.0	12.2	7.7	19.8	0.1	1.8	2.0	1.1	10.3	11.4
2001	22.5	165.0	187.5	17.0	204.5	25.6	24.1	49.7	0.3	3.1	3.4	1.4	16.8	18.1
2002	15.2	115.1	130.3	2.8	133.1	44.5	16.9	41.4	0.4	3.0	3.4	1.5	12.2	13.7
2003	19.3	133.3	152.7	7.2	159.8	27.3	20.7	48.0	0.9	3.5	4.4	2.0	18.4	20.4
2004	15.8	113.3	129.2	3.2	132.3	22.5	15.7	38.2	0.6	3.9	4.6	1.9	24.2	26.1
2005	12.0	88.5	100.5	c/	100.5	20.5	14.7	35.2	0.6	4.4	4.9	1.2	17.2	18.5
2006	10.4	59.8	70.2	1.7	71.9	15.4	9.1	24.5	0.5	3.6	4.1	0.5	12.9	13.4
2007	13.6	64.2	77.8	c/	77.8	15.7	10.2	25.9	0.4	2.9	3.3	0.6	12.8	13.4
2008	5.5	40.7	46.1	0.4	46.5	9.9	8.8	18.7	0.2	1.9	2.1	0.3	6.1	6.4
2009 <sup>b/</sup>	13.1	109.9	122.9	2.6	125.5	18.5	19.3	37.8	0.7	4.4	5.1	0.5	16.0	16.5

TABLE IV-14. Oregon and Washington recreational salmon, bottomfish, and sturgeon angler trips (thousands) by ocean port area and boat type for the area north of Cape Falcon. (Page 2 of 3)

Year	Columbia River and Buoy 10					Westport			La Push			Neah Bay and Area 4B Add-On		
	Charter	Private	Subtotal	Jetty	Total	Charter	Private	Total	Charter	Private	Total	Charter	Private	Total
<b>BOTTOMFISH EFFORT<sup>d/</sup></b>														
1984	2.1	0.1	2.2	-	-	12.4	0.5	12.9	0.0	0.0	0.0	1.8	12.3	14.1
1985	1.9	0.2	2.1	-	-	15.3	1.0	16.3	0.0	0.1	0.1	3.0	10.6	13.6
1986	1.7	0.2	1.9	-	-	19.6	0.8	20.4	0.0	0.2	0.2	3.5	11.4	14.9
1987	1.7	0.3	2.0	0.5	2.5	21.1	1.2	22.3	0.0	0.5	0.5	5.6	16.0	21.6
1988	2.1	0.2	2.3	0.8	3.1	24.4	1.1	25.5	0.0	0.7	0.7	5.7	14.8	20.5
1989	1.2	0.6	1.8	1.5	3.3	19.3	1.0	20.3	0.0	0.6	0.6	6.8	16.3	23.1
1990	1.4	0.3	1.7	2.4	4.1	21.8	0.8	22.6	0.0	0.8	0.8	6.4	18.1	24.5
1991	1.3	0.4	1.7	1.8	3.5	23.5	1.1	24.6	0.0	0.9	0.9	5.9	18.2	24.1
1992	1.4	0.5	1.9	2.3	4.1	20.5	2.2	22.7	0.0	1.5	1.5	4.8	19.1	23.9
1993	2.2	0.6	2.8	2.6	5.4	21.5	1.8	23.0	0.1	1.1	1.2	5.1	19.2	24.3
1994	2.7	0.7	3.3	2.7	6.0	26.0	1.7	27.7	0.2	1.9	2.1	4.1	15.0	19.1
1995	1.3	0.9	2.3	2.2	4.4	21.1	1.6	22.7	a/	1.6	1.6	4.1	19.2	23.3
1996 <sup>e/f/</sup>	1.2	0.5	1.7	1.7	3.4	21.4	1.2	22.6	0.0	1.6	1.6	4.8	21.0	25.8
1997	1.2	0.7	2.0	2.5	4.4	19.2	1.4	20.6	0.0	2.2	2.2	4.9	22.7	27.7
1998	1.8	0.5	2.3	0.9	3.2	21.5	1.3	22.8	0.0	1.2	1.2	5.1	23.9	29.0
1999	1.0	0.5	1.5	0.5	2.0	17.1	1.2	18.3	0.1	1.0	1.1	4.5	20.3	24.9
2000	1.2	0.6	1.8	0.5	2.3	16.7	0.9	17.6	0.2	1.3	1.5	4.5	20.1	24.6
2001	2.8	0.4	3.2	0.9	4.1	13.9	1.2	15.1	0.3	0.9	1.2	4.7	16.5	21.2
2002	14.3	0.5	1.9	0.8	2.8	14.9	1.2	16.1	0.3	1.2	1.6	4.0	15.7	19.7
2003	2.4	0.5	2.9	0.9	3.8	16.3	1.8	18.2	1.0	2.5	3.6	5.2	21.4	26.6
2004	2.4	0.8	3.2	0.3	3.5	14.8	1.7	16.5	0.4	1.7	2.1	3.5	15.2	18.7
2005	2.5	1.1	3.7	c/	3.7	15.5	1.8	17.3	0.5	2.5	3.0	3.5	18.8	22.4
2006	3.6	1.2	4.9	0.9	5.7	17.7	1.8	19.5	0.3	2.8	3.1	4.4	16.9	21.3
2007	3.1	1.5	4.6	c/	4.6	16.2	1.6	17.7	0.5	2.5	3.0	4.3	15.7	20.0
2008	2.9	2.0	4.9	0.4	5.3	15.5	1.7	17.2	1.0	2.3	3.3	2.3	16.2	18.5
2009 <sup>b/</sup>	2.1	1.3	3.3	0.3	3.6	13.0	2.2	15.2	0.7	2.7	3.4	1.5	13.6	15.1

TABLE IV-14. Oregon and Washington recreational salmon, bottomfish, and sturgeon angler trips (thousands) by ocean port area and boat type for the area north of Cape Falcon. (Page 3 of 3)

Year	Columbia River and Buoy 10					Westport			La Push			Neah Bay and Area 4B Add-On		
	Charter	Private	Subtotal	Jetty	Total	Charter	Private	Total	Charter	Private	Total	Charter	Private	Total
<b>STURGEON EFFORT<sup>g/</sup></b>														
1984	1.7	28.4	30.1	-	30.1	-	-	-	-	-	-	-	-	-
1985	5.0	31.2	36.2	-	36.2	-	-	-	-	-	-	-	-	-
1986	5.7	35.7	41.4	-	41.4	-	-	-	-	-	-	-	-	-
1987	6.0	43.2	49.2	-	49.2	-	-	-	-	-	-	-	-	-
1988	6.2	32.4	38.5	-	38.5	-	-	-	-	-	-	-	-	-
1989	4.3	22.0	26.3	-	26.3	-	-	-	-	-	-	-	-	-
1990	3.9	28.0	31.9	-	31.9	-	-	-	-	-	-	-	-	-
1991	3.6	26.0	29.7	-	29.7	-	-	-	-	-	-	-	-	-
1992	5.0	38.3	43.3	-	43.3	-	-	-	-	-	-	-	-	-
1993	6.1	48.6	54.6	-	54.6	-	-	-	-	-	-	-	-	-
1994	7.5	40.4	47.8	-	47.8	-	-	-	-	-	-	-	-	-
1995	7.7	55.2	62.9	-	62.9	-	-	-	-	-	-	-	-	-
1996	11.1	45.2	56.3	-	56.3	-	-	-	-	-	-	-	-	-
1997	12.2	48.4	60.7	-	60.7	-	-	-	-	-	-	-	-	-
1998	14.2	64.3	78.5	-	78.5	-	-	-	-	-	-	-	-	-
1999	13.2	57.1	70.3	-	70.3	-	-	-	-	-	-	-	-	-
2000	11.6	52.1	63.7	-	63.7	-	-	-	-	-	-	-	-	-
2001	10.8	40.9	51.7	-	51.7	-	-	-	-	-	-	-	-	-
2002	9.9	45.9	55.8	-	55.8	-	-	-	-	-	-	-	-	-
2003	6.6	38.1	44.7	-	44.7	-	-	-	-	-	-	-	-	-
2004	7.4	32.2	39.6	-	39.6	-	-	-	-	-	-	-	-	-
2005	8.7	51.2	59.9	-	59.9	-	-	-	-	-	-	-	-	-
2006	6.7	37.3	44.0	-	44.0	-	-	-	-	-	-	-	-	-
2007	7.9	39.8	47.7	-	47.7	-	-	-	-	-	-	-	-	-
2008	7.5	38.5	46.0	-	46.0	-	-	-	-	-	-	-	-	-
2009 <sup>b/</sup>	6.1	43.0	49.1	-	49.1	-	-	-	-	-	-	-	-	-

a/ Fewer than 50 angler trips.

b/ Preliminary.

c/ Columbia River north jetty was not sampled in 2005 and 2007 due to construction limiting access.

d/ Oregon data is a minimum estimate, as the jetty is not sampled, and bottomfish sampling of vessels only occurs when the ocean is open for salmon.

e/ No Oregon bottomfish trips are included.

f/ Includes tuna trips: Ilwaco - 9 charter, 14 private; Westport - 784 charter, 0 private.

g/ Annual sturgeon angler trips for the lower Columbia River from the western tip of Puget Island to mouth.

TABLE IV-15. Buoy 10<sup>ab/</sup> and Area 4B add-on recreational salmon angler trips and catch by boat type. (Page 1 of 2)

Year or Avg.	Angler Trips			Chinook Catch			Coho Catch			Pink Catch	
	Charter	Private	Jetty	Charter	Private	Jetty	Charter	Private	Jetty	Charter	Private
<b>OREGON BUOY 10</b>											
1987-1990	4,002	38,619	4,029	793	6,415	29	3,292	18,348	690	-	-
1991-1995	1,528	21,547	4,555	122	1,318	30	1,625	14,520	1,389	-	-
1996	179	6,122	2,285	59	419	-	66	1,361	532	-	-
1997	1,071	16,207	2,744	273	4,032	-	592	5,411	761	-	-
1998	588	9,949	631	145	2,191	-	59	1,169	31	-	-
1999	454	19,030	1,370	125	3,834	9	18	3,357	146	-	-
2000	836	27,492	2,129	26	3,083	4	297	7,523	295	-	-
2001	1,616	54,444	4,115	47	5,578	10	1,481	56,403	523	-	-
2002	512	39,943	1,589	31	10,728	-	2	3,058	52	-	-
2003	991	45,461	2,315	47	7,903	-	624	28,518	526	-	-
2004	66	33,092	1,170	19	9,191	-	17	7,585	47	-	-
2005	135	33,051	935	18	6,875	6	51	4,785	36	-	-
2006	37	24,194	1,457	1	1,350	-	-	2,800	-	-	-
2007	156	19,983	793	6	2,511	-	38	4,841	97	-	-
2008	198	19,020	-	43	5,608	-	69	4,487	-	-	-
2009 <sup>cl</sup>	182	39,425	1,684	1	3,550	16	164	27,000	466	-	-
<b>WASHINGTON BUOY 10</b>											
1987-1990	10,678	71,927	6,567	1,907	14,398	68	8,353	40,415	1,627	1	11
1991-1995	4,162	41,770	5,908	466	3,710	42	5,178	31,681	1,426	-	16
1996	352	9,096	-	37	894	-	123	2,455	-	-	-
1997	3,614	30,334	1,755	1,125	7,701	22	2,143	11,290	160	-	-
1998	1,080	16,388	1,362	333	3,075	40	188	1,584	44	-	-
1999	1,055	27,672	-	185	5,697	-	175	5,165	-	-	-
2000	3,685	36,268	2,108	286	2,626	60	2,123	11,033	207	-	-
2001	2,765	62,944	-	-	6,791	-	3,282	70,349	-	-	-
2002	1,001	40,927	485	232	8,424	26	98	3,023	-	-	-
2003	216	39,844	-	22	8,344	-	139	24,633	-	-	-
2004	685	33,805	-	45	6,791	-	139	7,381	-	-	-
2005	183	20,879	-	5	2,383	-	34	1,972	-	-	-
2006	421	14,597	-	5	351	-	8	879	-	-	-
2007	711	14,421	-	33	1,226	-	343	3,037	-	-	-
2008	804	12,445	-	154	2,544	-	436	3,581	-	-	-
2009 <sup>cl</sup>	389	31,123	-	4	2,369	-	312	20,185	-	-	-

TABLE IV-15. Buoy 10<sup>a/b/</sup> and Area 4B add-on recreational salmon angler trips and catch by boat type. (Page 2 of 2)

Year or Avg.	Angler Trips			Chinook Catch			Coho Catch			Pink Catch	
	Charter	Private	Jetty	Charter	Private	Jetty	Charter	Private	Jetty	Charter	Private
<b>TOTAL BUOY 10</b>											
1987-1990	14,680	110,547	10,596	2,700	20,812	98	11,645	58,763	2,317	1	11
1991-1995	5,690	63,317	10,463	588	5,029	72	6,803	46,201	2,814	0	16
1996	531	15,218	2,285	96	1,313	0	189	3,816	532	0	0
1997	4,685	46,541	4,499	1,398	11,733	22	2,735	16,701	921	0	0
1998	1,668	26,337	1,993	478	5,266	40	247	2,753	75	0	0
1999	1,509	46,702	1,370	310	9,531	9	193	8,522	146	0	0
2000	4,521	63,760	4,237	312	5,709	64	2,420	18,556	502	0	0
2001	4,381	117,388	4,115	47	12,369	10	4,763	126,752	523	0	0
2002	1,513	80,870	2,074	263	19,152	26	100	6,081	52	0	0
2003	1,207	85,305	2,315	69	16,247	0	763	53,151	526	0	0
2004	751	66,897	1,170	64	15,982	0	156	14,966	47	0	0
2005	318	53,930	935	23	9,258	6	85	6,757	36	0	0
2006	458	38,791	1,457	6	1,701	0	8	3,679	0	0	0
2007	867	34,404	793	39	3,737	0	381	7,878	97	0	0
2008	1,002	31,465	0	197	8,152	0	505	8,068	0	0	0
2009 <sup>c/</sup>	571	70,548	1,684	5	5,919	16	476	47,185	466	0	0
<b>TOTAL AREA 4B ADD-ON<sup>d/</sup></b>											
1989-1990	1,084	10,941	-	62	375	-	2,095	18,021	-	36	212
1991-1995	343	5,481	-	9	122	-	580	7,351	-	58	776
1996	36	1,511	-	-	5	-	61	2,266	-	-	-
1997	136	1,788	-	-	4	-	65	1,429	-	139	412
1998	71	6,296	-	5	98	-	125	7,937	-	-	3
1999 <sup>e/</sup>	-	-	-	-	-	-	-	-	-	-	-
2000	373	3,046	-	-	8	-	614	3,796	-	-	-
2001 <sup>f/</sup>	-	-	-	-	-	-	-	-	-	-	-
2002 <sup>f/</sup>	-	-	-	-	-	-	-	-	-	-	-
2003 <sup>f/</sup>	-	-	-	-	-	-	-	-	-	-	-
2004 <sup>f/</sup>	-	-	-	-	-	-	-	-	-	-	-
2005 <sup>f/</sup>	-	-	-	-	-	-	-	-	-	-	-
2006 <sup>e/</sup>	-	-	-	-	-	-	-	-	-	-	-
2007 <sup>f/</sup>	-	-	-	-	-	-	-	-	-	-	-
2008	-	782	-	-	11	-	-	137	-	-	-
2009 <sup>f/</sup>	-	-	-	-	-	-	-	-	-	-	-

a/ Starting in 2000, includes catch upstream from the Astoria-Megler Bridge to the new boundary line from Tongue Point, Oregon to Rocky Point, Washington. Prior to 2000 includes only downstream from the Astoria-Megler Bridge.

b/ Prior to 1987, data on charter and private anglers were combined. Total Buoy 10 catch and effort data prior to 1987 are provided in Table B-21.

c/ Preliminary.

d/ There was no Area 4B add-on fishery prior to 1989.

e/ There was no Area 4B add-on fishery opening because the Area 4 ocean quota was not attained.

f/ There was no Area 4B add-on fishery planned.

TABLE IV-16. Estimates of California coastal community and state personal income impacts in thousands of real (inflation adjusted, 2009) dollars of the troll and recreational ocean salmon fishery for major port areas.<sup>a/</sup>

Year or Avg.	Crescent City	Eureka	Fort Bragg	San Francisco	Monterey	Coastal Community	
						Total <sup>b/</sup>	State Total
<b>OCEAN TROLL<sup>c/</sup></b>							
1976-1980	6,576	16,703	16,378	21,485	9,222	70,364	90,462
1981-1985	3,330	4,018	9,404	17,751	6,048	40,552	50,488
1986-1990	1,252	3,100	16,493	32,025	11,977	64,848	79,587
1991-1995	10	147	1,036	12,052	6,866	20,112	24,237
1996-2000	11	175	732	12,617	7,650	21,185	22,415
2001	14	298	983	10,335	2,186	13,817	14,342
2002	260	498	3,548	14,759	3,975	23,040	24,475
2003	210	36	14,398	15,002	2,366	32,013	35,604
2004	1,844	407	7,054	22,162	4,988	36,456	37,223
2005	137	414	5,137	12,790	6,713	25,191	25,822
2006	-	-	2,337	6,044	918	9,300	9,603
2007	314	778	3,216	7,676	1,565	13,549	13,791
2008	-	-	-	-	-	-	-
2009	-	-	-	-	-	-	-
<b>RECREATIONAL</b>							
1976-1980	1,276	1,479	861	12,946	867	17,429	19,551
1981-1985	1,397	1,440	690	11,465	915	15,908	17,906
1986-1990	2,368	2,467	1,203	14,012	3,765	23,815	27,753
1991-1995	859	925	1,396	11,852	5,676	20,707	24,312
1996-2000	398	732	1,426	11,882	5,219	19,657	22,869
2001	341	741	2,000	7,212	2,902	13,196	14,196
2002	152	824	2,115	9,060	4,463	16,614	17,840
2003	86	620	1,597	6,554	2,157	11,014	11,797
2004	130	1,040	2,071	10,613	4,182	18,036	19,288
2005	98	658	1,674	8,002	3,038	13,472	14,436
2006	58	650	1,380	5,417	1,829	9,333	10,056
2007	82	848	1,113	3,841	1,331	7,216	7,835
2008	-	-	25	-	-	25	29
2009 <sup>d/</sup>	43	219	-	-	-	262	307

a/ Per pound and per day estimates of income impacts provided from output of the Fishery Economic Assessment Model (FEAM). These are the income impacts associated with expenditures in the troll or recreational sectors. There is no differentiation between money new to the area and money which would otherwise have been expended in other sectors. It is assumed that all fish landed at a port is processed in the port area. Values through 1995 are based on a 1992 run of the FEAM using 1989 U.S. Forest Service IMPLAN data. Values from 1996 through 2000 are based on a 1998 run of the FEAM using 1996 U.S. Forest Service IMPLAN data. Beginning in 2001 values are based on a 2003 run of the FEAM using 1998 U.S. Forest Service IMPLAN data.

b/ Total personal income impacts on coastal areas. Totals do not include impacts of one coastal area on another.

c/ Excluding pink salmon.

d/ Preliminary.

TABLE IV-17. Estimates of Oregon coastal community and state personal income impacts in thousands of real (inflation adjusted, 2009) dollars of the troll and recreational ocean salmon fishery for major port areas.<sup>a/</sup>

Year or Avg.	Astoria	Tillamook	Newport	Coos Bay	Brookings	Coastal Community Total <sup>b/</sup>	State Total
<b>OCEAN TROLL<sup>c/</sup></b>							
1976-1980	4,222	5,434	12,747	19,617	8,155	50,174	68,028
1981-1985	1,367	1,759	4,126	7,276	3,159	17,688	24,038
1986-1990	631	3,681	8,192	15,791	2,993	31,288	42,256
1991-1995	88	686	2,812	1,366	139	5,091	6,864
1996-2000	146	288	2,976	1,718	414	5,542	6,753
2001	367	748	5,604	2,944	604	10,267	12,497
2002	1,048	888	4,794	4,238	767	11,735	14,213
2003	1,025	929	6,197	5,634	664	14,450	17,484
2004	864	691	6,117	6,655	1,425	15,752	17,023
2005	715	1,190	5,089	5,041	1,193	13,228	14,294
2006	934	581	1,526	411	358	3,810	4,087
2007	275	390	635	1,850	736	3,885	4,170
2008	362	172	-	-	68	603	634
2009 <sup>d/</sup>	159	149	131	18	40	497	531
<b>RECREATIONAL</b>							
1979	3,539	1,130	5,381	5,449	2,623	18,121	23,363
1980	4,273	1,877	5,941	5,710	2,549	20,350	26,209
1981-1985	2,086	1,682	4,018	4,097	2,851	14,734	19,127
1986-1990	1,428	1,786	5,559	4,049	2,968	15,791	20,559
1991-1995	970	781	1,768	1,579	1,114	6,211	8,054
1996-2000	375	431	424	468	899	2,597	3,424
2001	1,347	726	1,712	1,436	1,002	6,223	7,627
2002	786	1,030	1,350	1,574	738	5,478	6,742
2003	1,147	1,191	2,701	1,967	578	7,583	9,328
2004	1,030	1,295	2,494	1,858	715	7,392	9,104
2005	747	534	848	1,155	477	3,761	4,610
2006	536	629	666	826	406	3,063	3,764
2007	753	854	1,292	1,034	416	4,348	5,345
2008	216	336	280	281	180	1,293	1,592
2009 <sup>d/</sup>	759	921	1,863	556	230	4,328	5,328

a/ Per pound and per day estimates of income impacts provided by the FEAM. These are the income impacts associated with expenditures in the troll or recreational sectors. There is no differentiation between money new to the area and money which would otherwise have been expended in other sectors. It is assumed that all fish landed at a port is processed in the port area. Values through 1995 are based on a 1992 run of the FEAM using 1989 U.S. Forest Service IMPLAN data. Values from 1996 through 2000 are based on a 1998 run of the FEAM using 1996 U.S. Forest Service IMPLAN data. Beginning in 2001 values are based on a 2003 run of the FEAM using 1998 U.S. Forest Service IMPLAN data.

b/ Total personal income impacts on coastal areas. Totals do not include impacts of one coastal area on another.

c/ Excluding pink salmon.

d/ Preliminary.

TABLE IV-18. Estimates of Washington coastal community and state personal income impacts in thousands of real (inflation adjusted, 2009) dollars of the troll and recreational ocean salmon fishery for major port areas.<sup>a/</sup>

Year or Avg.	Neah Bay	La Push	Westport	Ilwaco <sup>b/</sup>	Coastal Community		State Total
					Total <sup>c/d/</sup>	Puget Sound	
<b>OCEAN TROLL<sup>e/f/</sup></b>							
1976-1980	6,096	8,324	16,502	5,909	36,832	8,203	58,758
1981-1985	1,198	485	4,521	1,082	7,287	1,750	11,453
1986-1990	663	174	2,077	452	3,366	1,013	5,515
1991-1995 <sup>g/</sup>	488	108	694	50	1,341	196	1,974
1996-2000	164	3	198	19	385	101	528
2001	300	0	625	42	967	0	1,046
2002	620	81	1,087	181	1,969	0	2,170
2003	1,125	190	928	136	2,379	43	2,758
2004	828	261	1,029	100	2,219	26	2,564
2005	678	405	1,042	129	2,254	1	2,546
2006	503	408	392	263	1,565	34	1,853
2007	222	226	921	114	1,483	20	1,649
2008	144	174	546	129	993	12	1,157
2009	292	301	1,052	73	1,719	34	1,960
<b>RECREATIONAL</b>							
1976-1980	2,246	1,114	22,341	10,936	36,637	-	48,846
1981-1985	1,358	139	8,790	4,518	14,805	-	19,768
1986-1990	1,042	119	4,988	2,689	8,839	-	11,744
1991-1995	554	108	3,079	1,561	5,302	-	6,997
1996-2000	293	80	1,442	705	2,520	-	3,318
2001	758	154	5,636	3,571	10,119	-	11,821
2002	645	165	5,191	2,842	8,843	-	10,331
2003	937	262	5,847	3,787	10,834	-	12,674
2004	1,099	233	4,770	3,126	9,227	-	10,818
2005	753	236	4,353	2,531	7,873	-	9,219
2006	494	207	3,214	1,968	5,883	-	6,886
2007	504	161	3,298	2,572	6,535	-	7,640
2008	218	97	2,169	916	3,400	-	3,973
2009	588	258	4,139	2,832	7,817	-	9,143

a/ Per pound and per recreational day estimates of income impacts provided by the FEAM. These are the income impacts associated with expenditures in the troll or recreational sectors. There is no differentiation between money new to the area and money which would otherwise have been expended in other sectors. It is assumed that all fish landed at a port is processed in the port area. Values through 1995 are based on a 1992 run of the FEAM using 1989 U.S. Forest Service IMPLAN data. Values from 1996 through 2000 are based on a 1998 run of the FEAM using 1996 U.S. Forest Service IMPLAN data. Beginning in 2001 values are based on a 2003 run of the FEAM using 1998 U.S. Forest Service IMPLAN data.

b/ Recreational values exclude recreational shorebased effort from the Columbia River north jetty.

c/ Total personal income impacts on coastal areas. Totals do not include impacts of one coastal area on another.

d/ Through 1993, commercial values include a very small amount of fish landed in Washington coastal areas not included in the major port groups.

e/ Excluding pink salmon.

f/ All commercial values in this table are based on preliminary information available at the start of each year's Salmon Review.

g/ The non-Indian commercial and recreational fisheries were closed north of Cape Falcon in 1994. Some commercial catch taken south of Cape Falcon was landed in the Puget Sound area.

TABLE IV-19. Local personal income impacts in real (inflation adjusted, 2009) dollars of the inriver commercial salmon fishery on Oregon and Washington Columbia River communities.<sup>a/</sup>

	Non-Indian - Gillnet <sup>b/</sup>						Treaty Indian - All Gears <sup>c/</sup>						Columbia River Total
	Chinook			Coho	Chum	TOTAL	Chinook			Coho	Chum	TOTAL	
	Spring	Fall					Spring	Fall					
	Brights <sup>d/</sup>	Tules				Brights <sup>d/</sup>	Tules						
<b>Oregon</b>													
1987-2003	974	2,581	260	1,903	3	5,721	13	1,093	78	11	e/	1,194	6,915
2004	2,134	1,415	301	1,717	1	5,569	356	1,453	349	54	-	2,213	7,782
2005	641	1,027	179	1,877	e/	3,723	-	542	82	1	-	625	4,349
2006	1,158	1,331	87	1,257	e/	3,834	1	721	14	30	-	766	4,599
2007	1,312	730	e/	505	e/	2,547	120	701	e/	30	-	851	3,399
2008 <sup>h/</sup>	1,048	1,980	186	1,282	e/	4,496	580	1,791	194	102	-	2,666	7,163
2009 <sup>h/</sup>	779	1,782	269	1,999	e/	4,829	264	1,246	137	53	-	1,701	6,531
<b>Washington<sup>f/g/h/</sup></b>													
1987-2003	434	1,109		862	2	2,407	127	2,221		35	-	2,383	4,791
2004	560	1,125		880	e/	2,565	416	1,653		60	-	2,128	4,693
2005	446	796		434	e/	1,676	270	2,717		49	-	3,035	4,711
2006	624	900		550	-	2,074	900	2,977		77	e/	3,954	6,029
2007	166	451		410	e/	1,026	1	2,579		128	e/	2,707	3,733
2008	424	972		537	1	1,934	1,753	3,602		351	e/	5,706	7,640
2009	531	1,107		596	1	2,235	1,172	2,145		71	-	3,388	5,623
<b>Columbia River</b>													
1987-2003	1,407	3,950		2,765	5	8,128	139	3,392		46	e/	3,577	11,705
2004	2,694	2,841		2,597	1	8,134	772	3,455		114	-	4,341	12,475
2005	1,087	2,001		2,311	e/	5,399	-	3,341		50	-	3,660	9,059
2006	1,782	2,318		1,808	-	5,908	900	3,713		107	-	4,720	10,628
2007	1,478	1,180		915	e/	3,574	120	3,280		159	-	3,559	7,132
2008 <sup>h/</sup>	1,472	3,138		1,819	1	6,430	2,332	5,587		453	-	8,372	14,802
2009 <sup>h/</sup>	1,310	3,158		2,595	1	7,064	1,437	3,529		125	-	5,090	12,154

a/ Excluding pink, sockeye, and steelhead. Values through 1995 are based on a 1992 run of the FEAM using 1989 U.S. Forest Service IMPLAN data. Values from 1996 through 2000 are based on a 1998 run of the FEAM using 1996 U.S. Forest Service IMPLAN data. Beginning in 2001 values are based on a 2003 run of the FEAM using 1998 U.S. Forest Service IMPLAN data.

b/ Mainstem below Bonneville and Select Areas (Youngs Bay, Tongue Point, Blind Slough, and Deep River).

c/ Treaty Indian values do not include direct sales to consumers.

d/ For Washington and the Columbia River this column includes fall brights, tules, and jacks.

e/ Less than \$500.

f/ Preliminary. (All Washington values in this table are based on preliminary information available when each year's Salmon

g/ Washington income impacts for years prior to 2000 are based on a combination of Washington and Oregon value information.

h/ Treaty Indian values are primarily mainstem Columbia set gillnet but also include Klickitat dipnet, Drano Lake (Little White Salmon River mouth), and Priest Rapids Pool fisheries.

TABLE IV-20. Local personal income impacts in real (inflation adjusted, 2009) dollars of the Buoy 10 recreational fishery in Oregon and Washington and the Area 4B add-on fishery in Washington.

Year	Total Angler Trips (thousands)	Income Impacts (thousands of dollars)		
		Oregon	Washington	Total
<b>BUOY 10 (including bank fishing)</b>				
1987-1990	136	2,639	4,601	7,240
1991-1995	79	1,501	2,554	4,055
1996-2000	45	961	1,316	2,277
2001	126	2,483	2,622	5,105
2002	84	1,670	1,570	3,241
2003	89	1,979	1,370	3,349
2004	69	1,327	1,257	2,584
2005	55	1,326	731	2,057
2006	41	992	566	1,558
2007	36	821	615	1,436
2008	32	760	567	1,327
2009 <sup>b/</sup>	73	1,607	1,112	2,718
<b>AREA 4B ADD-ON<sup>c/</sup></b>				
1989-1990	12	-	652	652
1991-1995	6	-	304	304
1996-2000	3	-	136	136
2001	-	-	-	-
2002	-	-	-	-
2003	-	-	-	-
2004	-	-	-	-
2005	-	-	-	-
2006	-	-	-	-
2007	-	-	-	-
2008	1	-	30	30
2009	-	-	-	-

a/ Values through 1995 are based on a 1992 run of the FEAM using 1989 U.S. Forest Service IMPLAN data. Values from 1996 through 2000 are based on a 1998 run of the FEAM using 1996 U.S. Forest Service IMPLAN data. Beginning in 2001 values are based on a 2003 run of the FEAM using 1998 U.S. Forest Service IMPLAN data.

b/ Preliminary

c/ There were no Area 4B add-on fisheries prior to 1989.

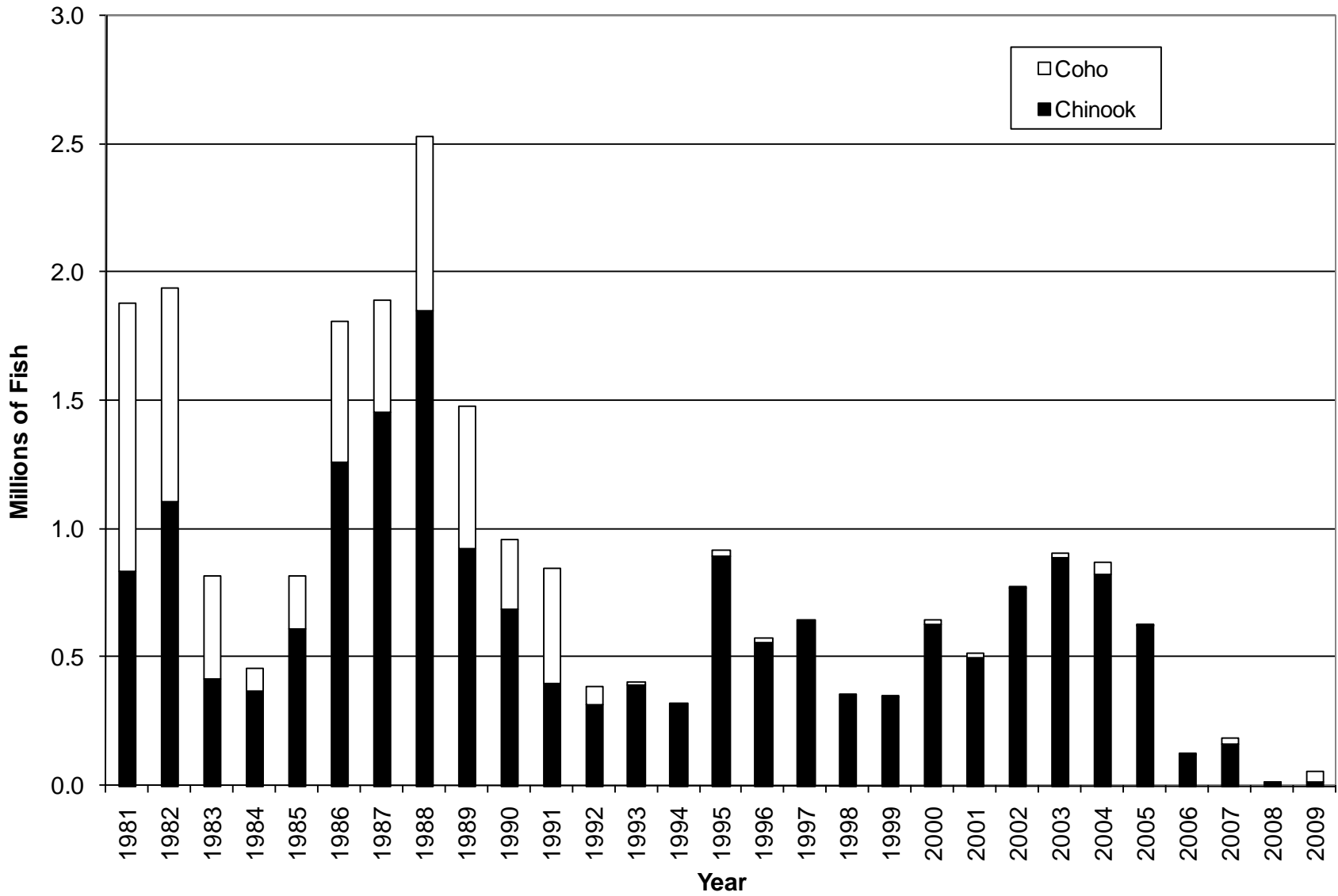


Figure IV-1. West Coast ocean non-Indian commercial Chinook and coho harvest.

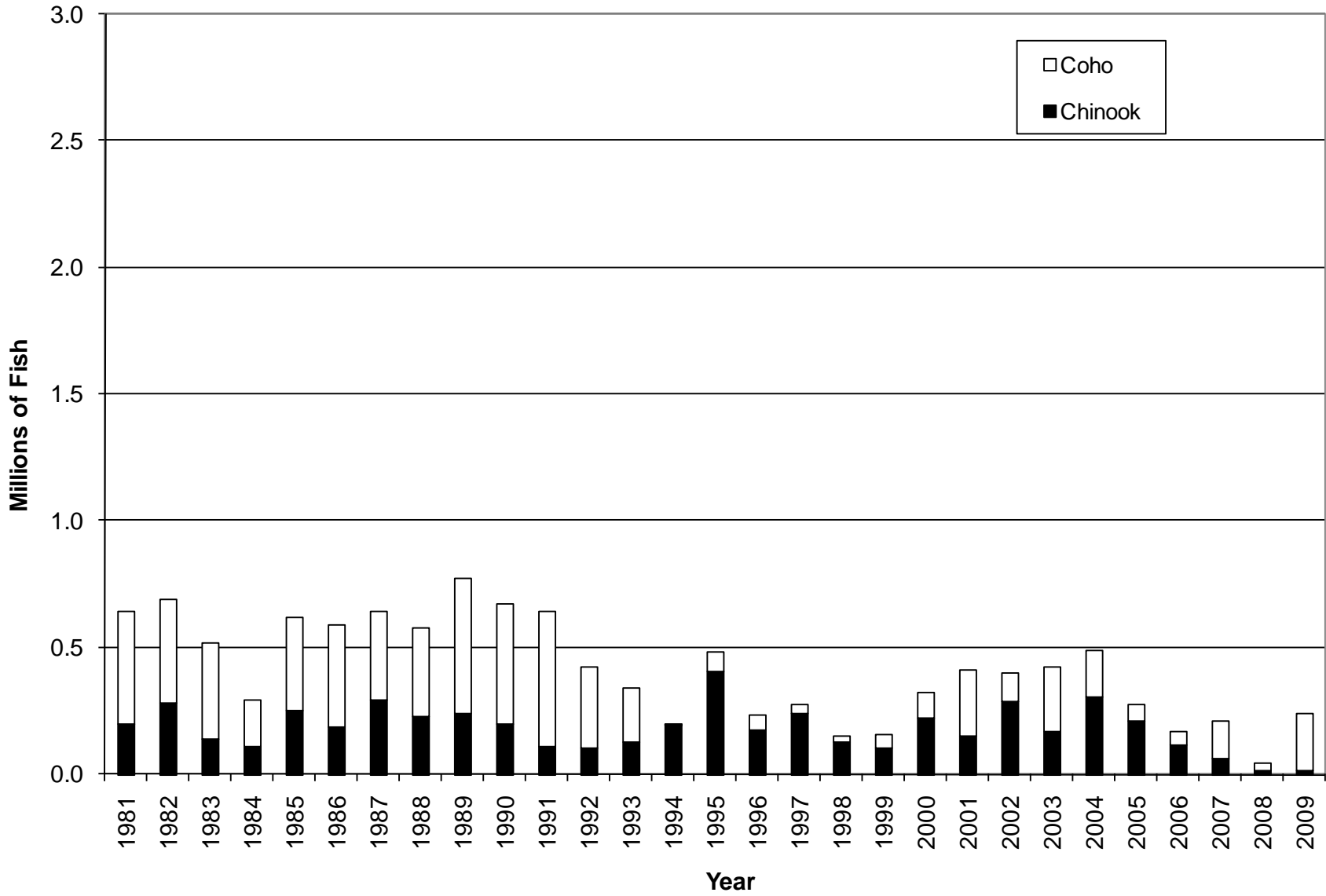


Figure IV-2. West Coast ocean recreational Chinook and coho harvest.

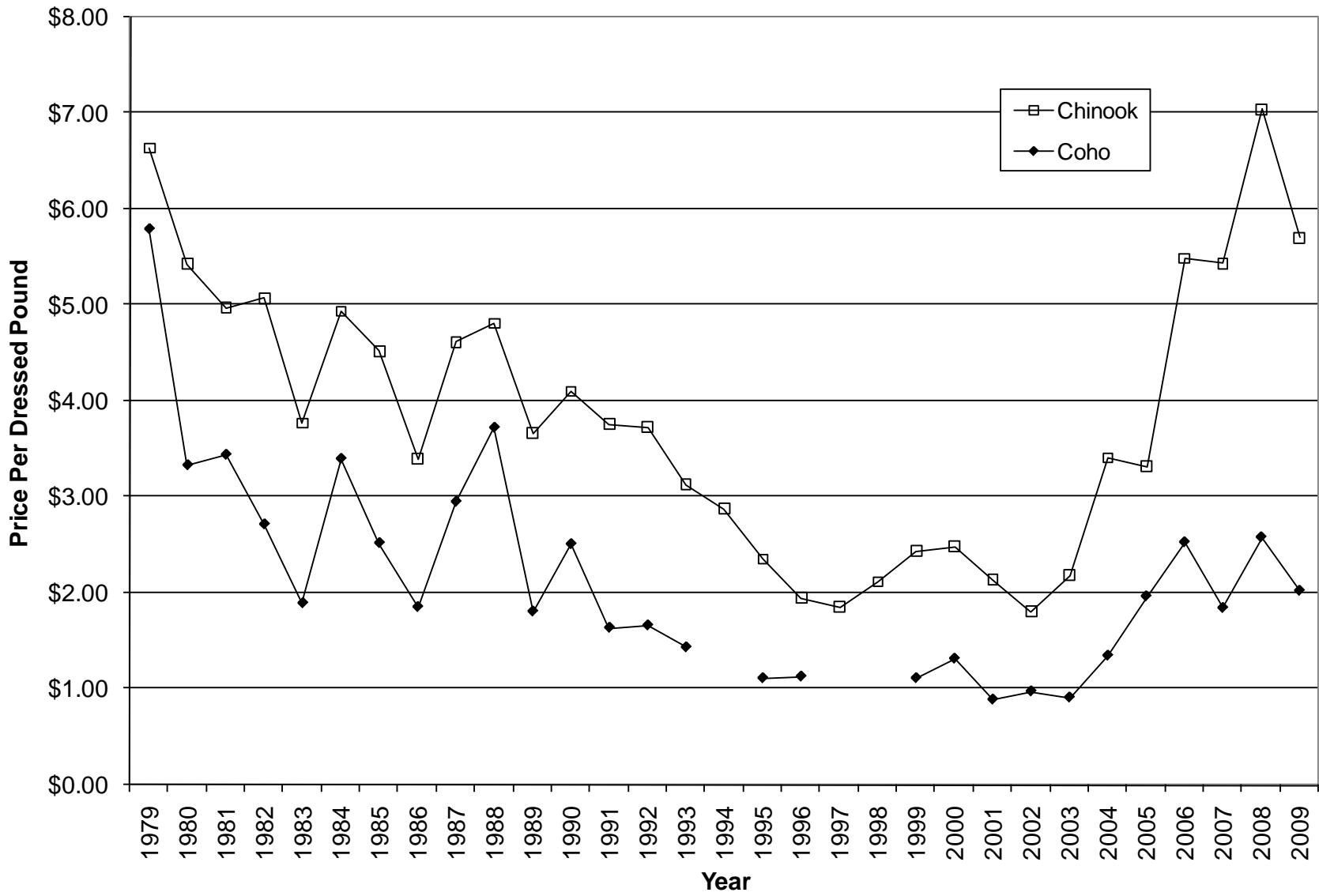


Figure IV-3. West Coast non-Indian ocean commercial salmon annual exvessel prices (inflation adjusted, 2009 dollars).

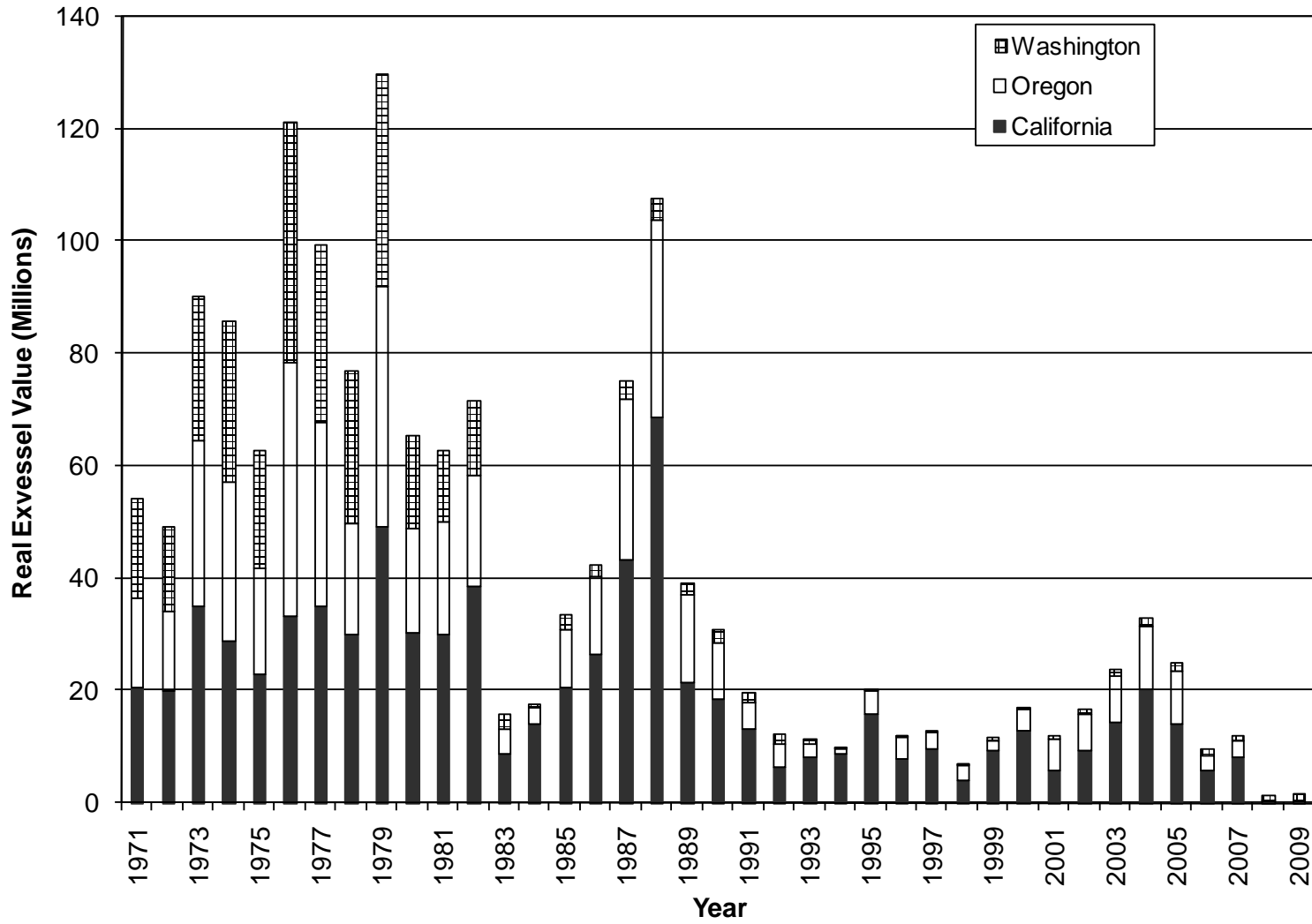


Figure IV-4. Exvessel value of West Coast non-Indian ocean commercial Chinook and coho landings by state of landing (inflation adjusted, 2009 dollars).

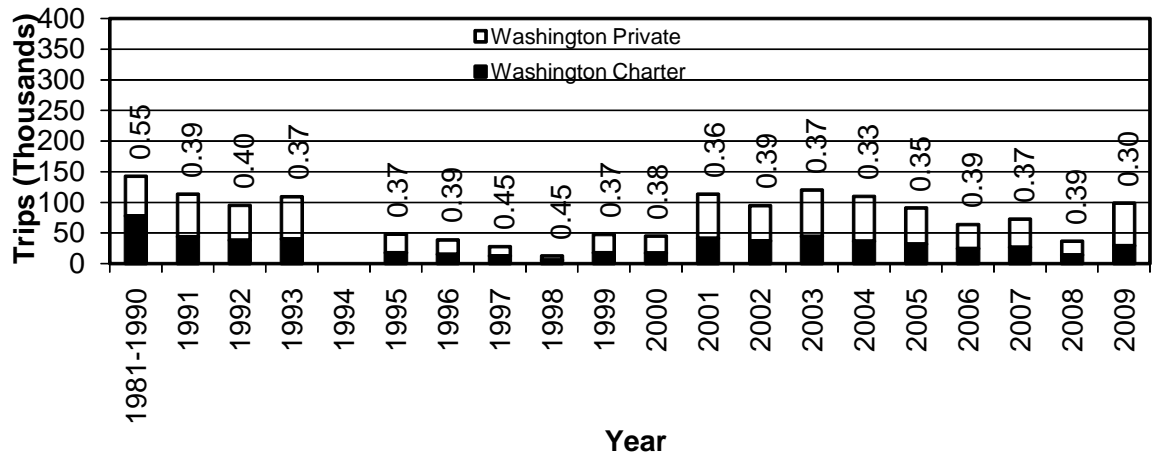
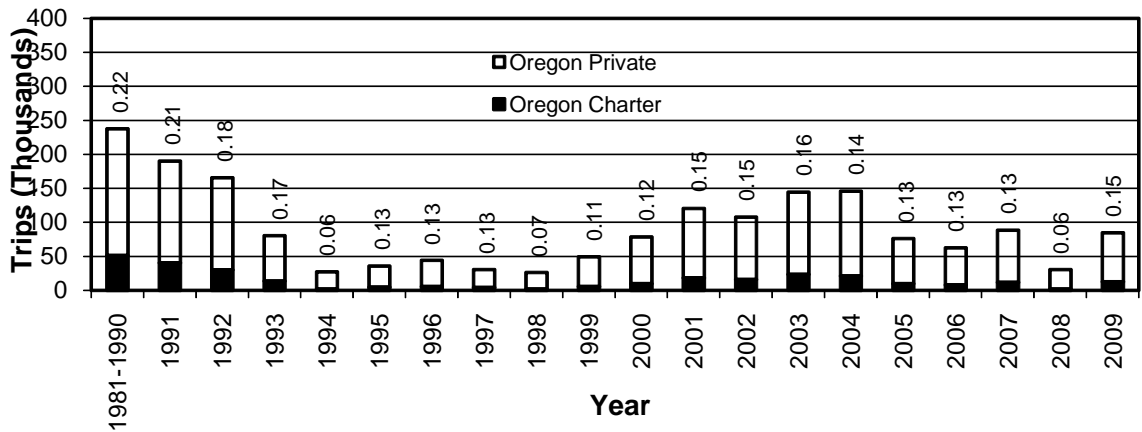
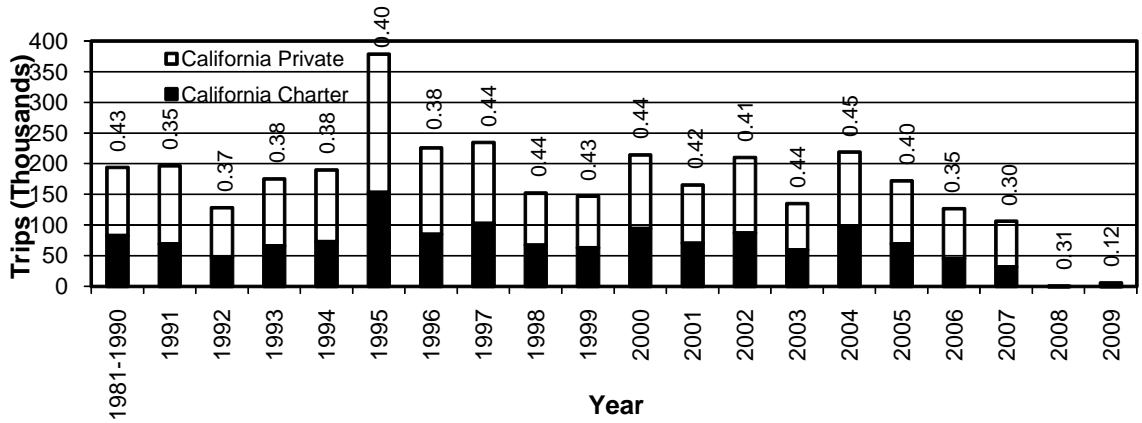


Figure IV-5. Total recreational ocean salmon trips for California, Oregon, and Washington, with proportion of charter trips shown above each bar.